

ADMIRAL

INFORMATION DE SERVICE
ARMOIRE CONGELATEUR
GC2224GEKB

8595 338 65120

Dernière modification: 01.02.2010

DOCUMENT**2**

POUR VOTRE SECURITE CES DOCUMENTS DOIVENT ETRE UTILISES
PAR DES SPECIALISTES AGREES, SEULS HABILITES A REPARER
VOTRE APPAREIL EN PANNE.
SOUS RESERVE DE MODIFICATIONS

DOCUMENT**Repair
Parts
List**MODEL NUMBER
GC2224GEKB**REFRIGERATOR**

When requesting service or ordering parts, always
provide the following information:

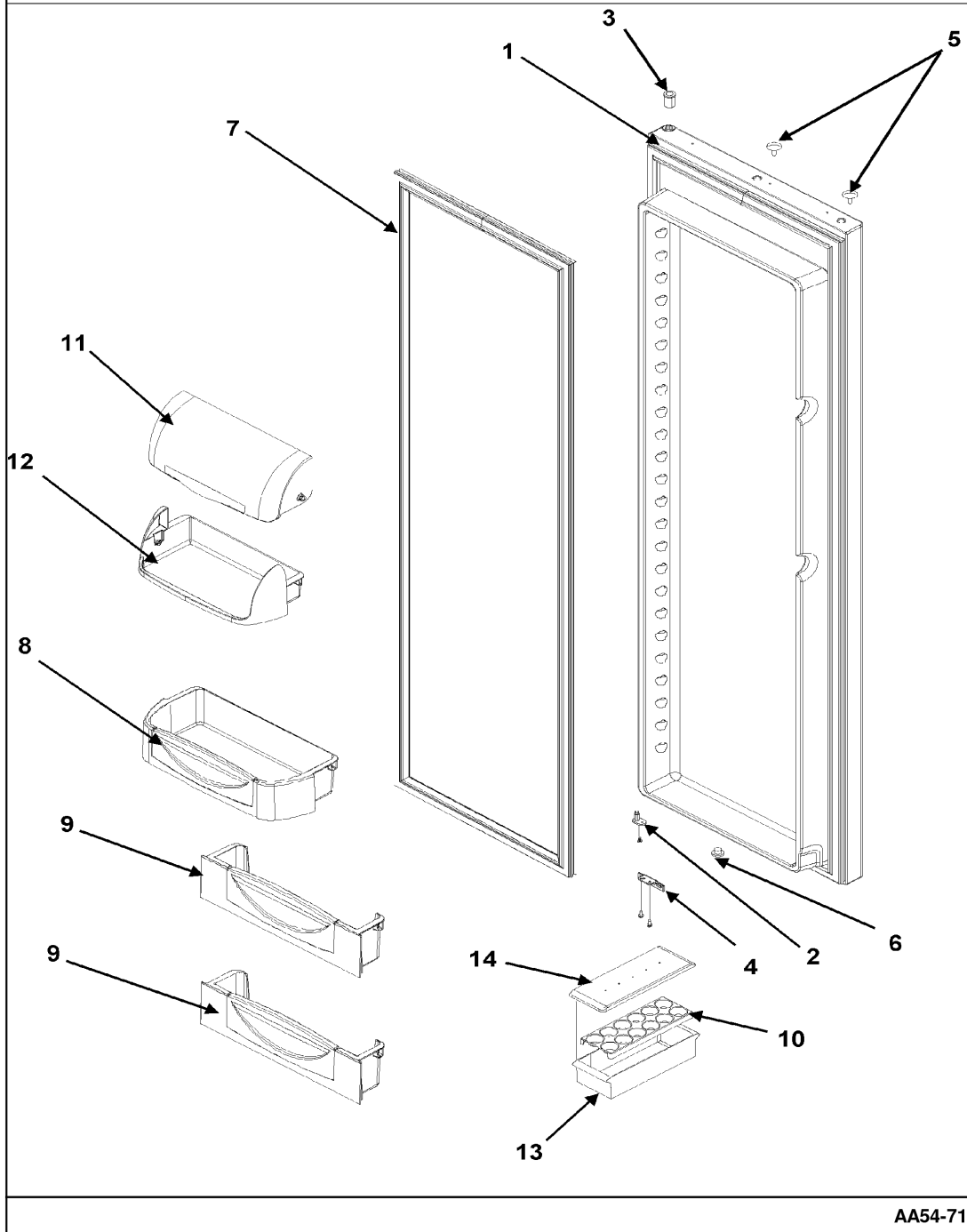
- Product Type
- Part Number
- Model Number
- Part Description

MAYTAG[®]

©2005 Maytag Services

Section: REFRIGERATOR DOOR

Model: GC2224GEKB



AA54-71

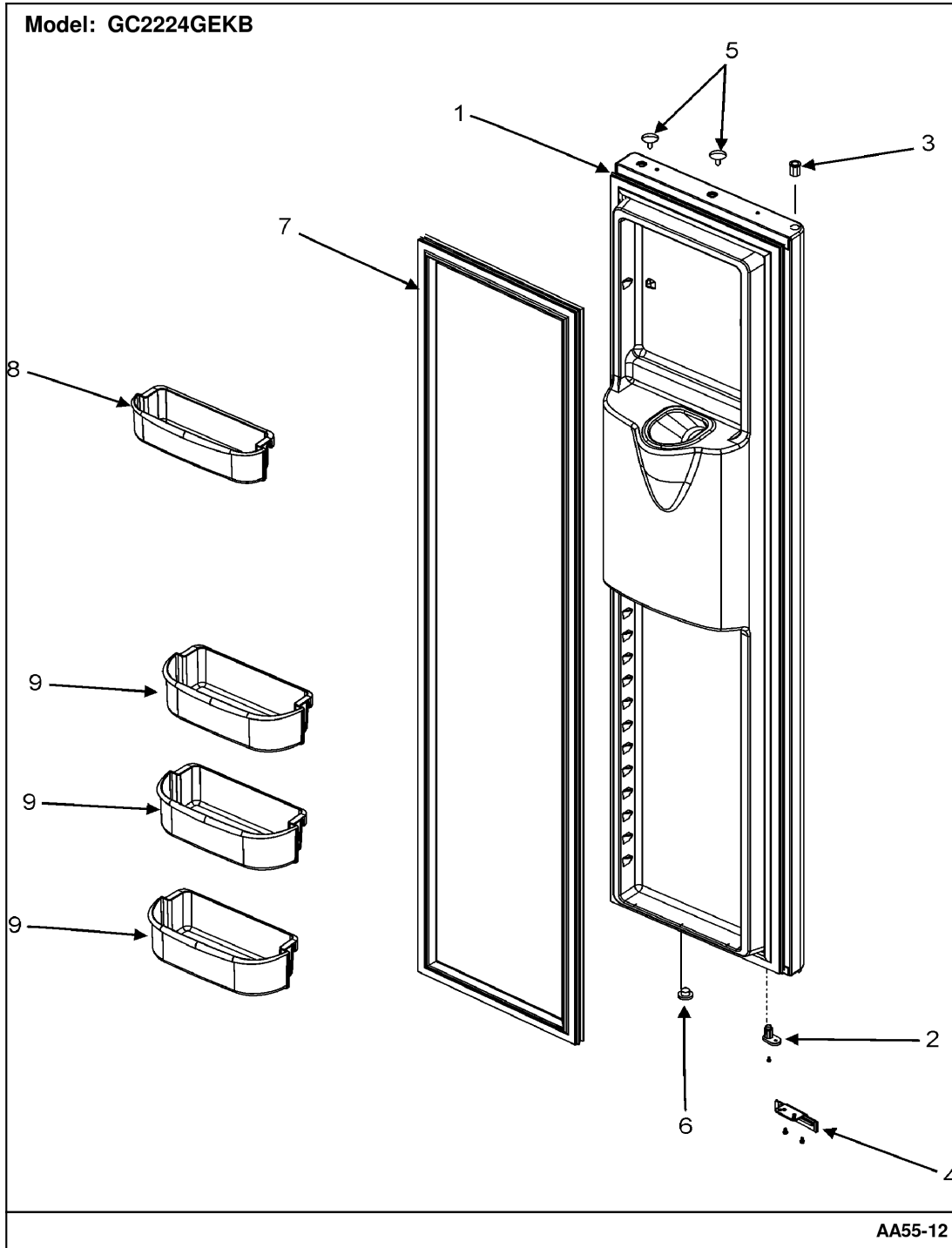
Section: REFRIGERATOR DOOR

No.	Part No.	Description	Series	Qty
1	67005105	DOOR ASSY., REF. FOAM (BLK)	10	1
2	12113204	CLOSURE, DOOR (BLK)	10	1
-	M0220432	SCREW, TC Note: SCREW, CLOSURE	10	1
3	10961002	BUSHING, DOOR (BLK)	10	1
-	M0211018	SCREW, SM Note: SCREW, DOOR STOP	10	2
4	12636401B	STOP, DOOR (BLK)	10	1
5	M0311604	PLUG, BUTTON (BLK)	10	2
6	A3080001	PLUG, BUTTON (BLK)	10	1
7	67003965	GASKET, REF. DOOR (BLK)	10	1
8	67004110	BUCKET-36"REF GAL	10	3
9	67005107	BUCKET, REF. DOOR	10	2
10	10436506	TRAY, EGG	10	1
11	67001325	DOOR, DAIRY	10	1
12	67002304	TRAY, DAIRY	10	1
13	10423131	BIN, UTILITY	10	1
14	10436404	LID, UTILITY	10	1

*Color Code (-)=Not Shown #=Series, Serial Prefix or Run No., N=Not Available

Section: FREEZER DOOR

Model: GC2224GEKB



AA55-12

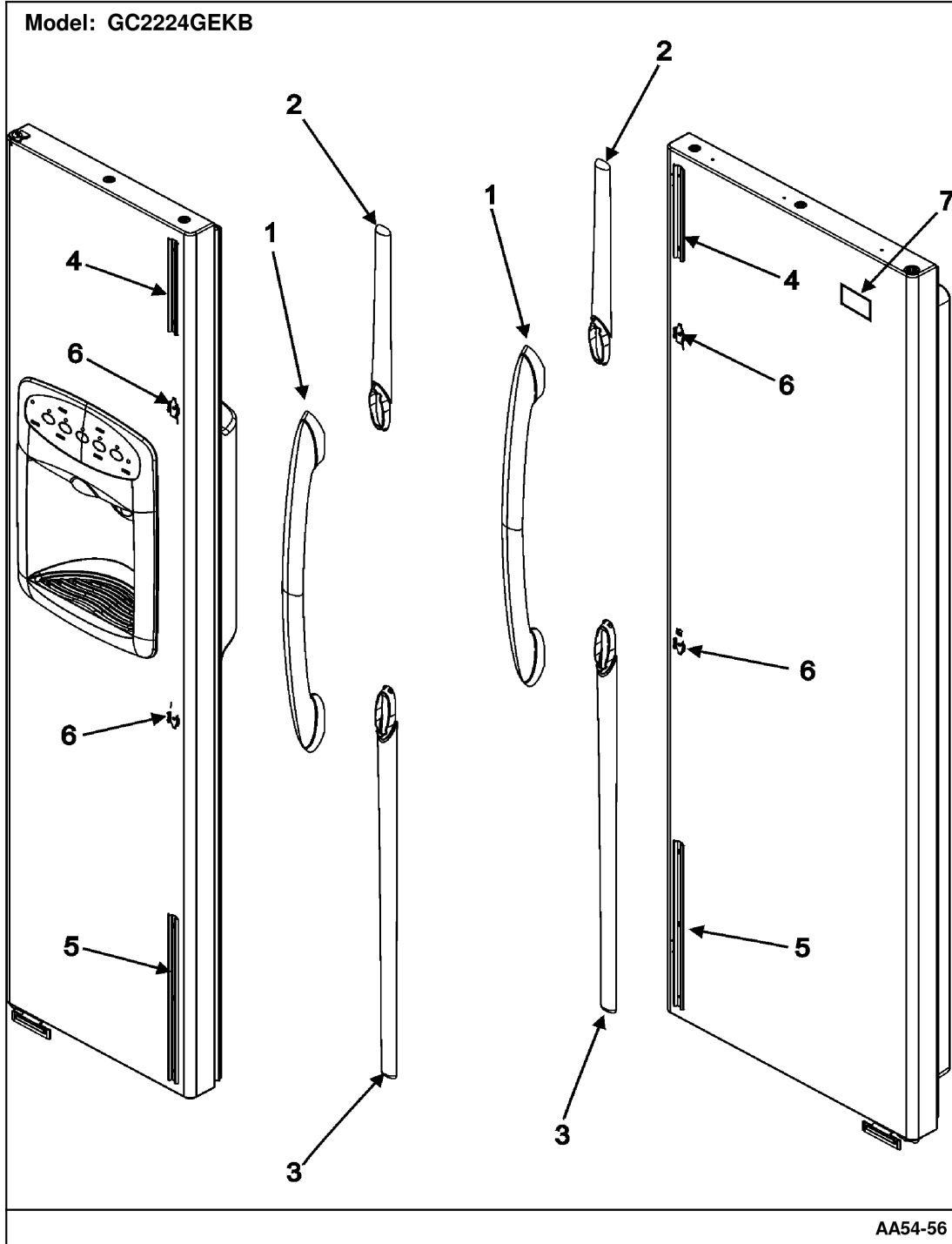
Section: FREEZER DOOR

No.	Part No.	Description	Series	Qty
1	67005109	DOOR ASSY., FRZ. FOAM (BLK)	10	1
2	12571301B	CLOSURE, DOOR (BLK)	10	1
-	M0220432	SCREW, TC Note: SCREW, CLOSURE	10	1
3	12395501B	BUSHING, DOOR (BLK)	10	1
4	12636401B	STOP, DOOR (BLK)	10	1
-	M0211018	SCREW, SM Note: SCREW, DOOR STOP	10	2
5	M0311604	PLUG, BUTTON (BLK)	10	2
6	A3080001	PLUG, BUTTON (BLK)	10	1
7	67003967	GASKET, FRZ. DOOR (BLK)	10	1
8	12556901	BUCKET, UPR FZ DR	10	1
9	12557501	BUCKET, LWR FZ DR	10	3

*Color Code (-)=Not Shown #=Series, Serial Prefix or Run No., N=Not Available

Section: HANDLES

Model: GC2224GEKB



AA54-56

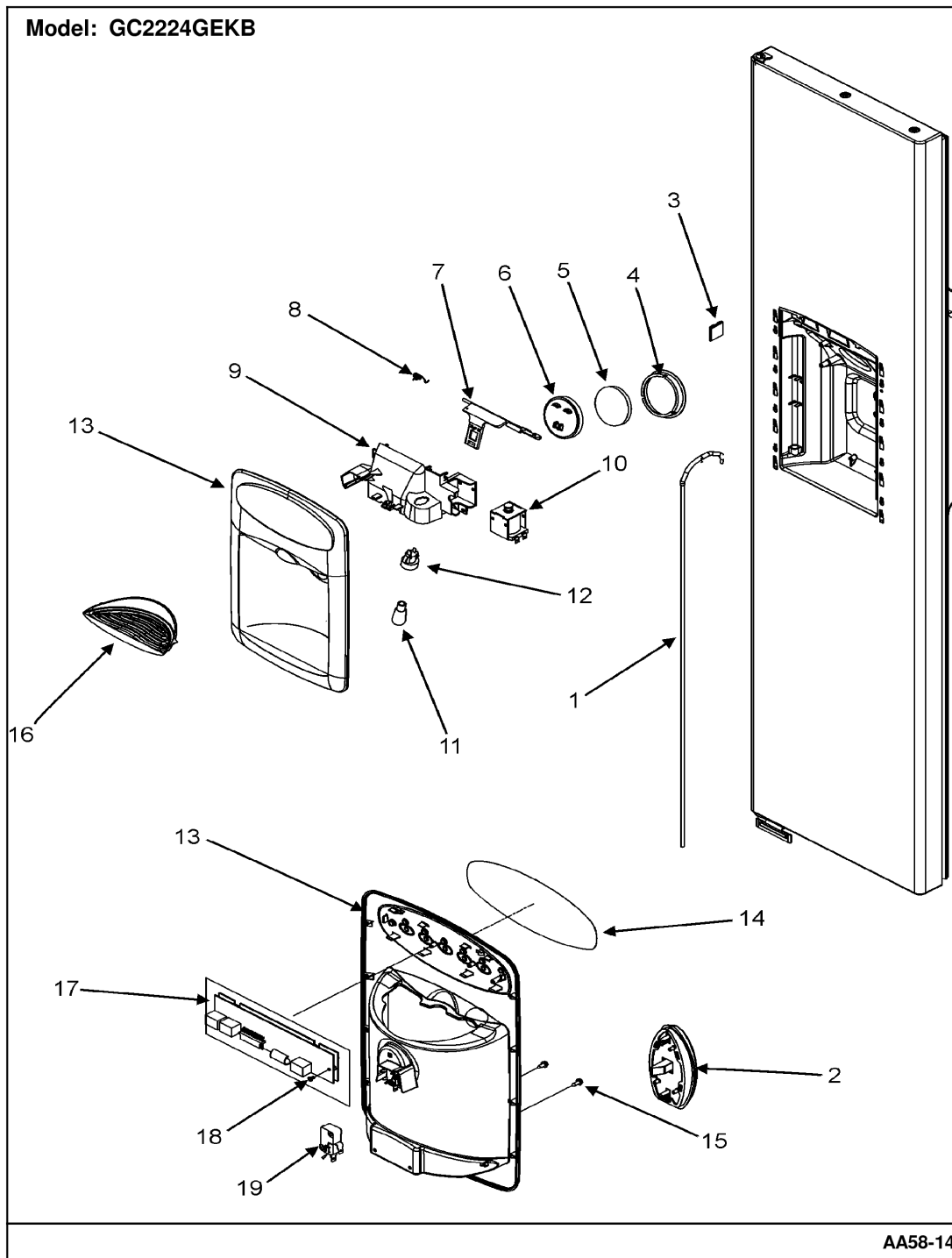
Section: HANDLES

No.	Part No.	Description	Series	Qty
1	67004968	HANDLE ASSY., DOOR (BLK)	10	2
-	67004112	CARD, HANDLE RELEASE SS & WS Note: CARD, HANDLE RELEASE	10	1
2	67004232	TRIM, TOP DOOR (BLK)	10	2
3	67004235	TRIM, BOTTOM DOOR (BLK)	10	2
4	67004116	CLEAT, HANDLE	10	2
-	67003801	SCREW, SM #8 Note: SCREW, CLEAT	10	4
5	67004117	CLEAT, HANDLE	10	2
-	67003801	SCREW, SM #8 Note: SCREW, CLEAT	10	4
-	67003800	SCREW, SM #10 Note: SCREW, CLIP	10	4
6	67003337	CLIP, HANDLE BUTTERFLY Note: CLIP, HANDLE	10	4
7	61002504	BEZEL, NAMEPLATE (BLK)	10	1

*Color Code (-)=Not Shown #=Series, Serial Prefix or Run No., N=Not Available

Section: FOUNTAIN

Model: GC2224GEKB



AA58-14

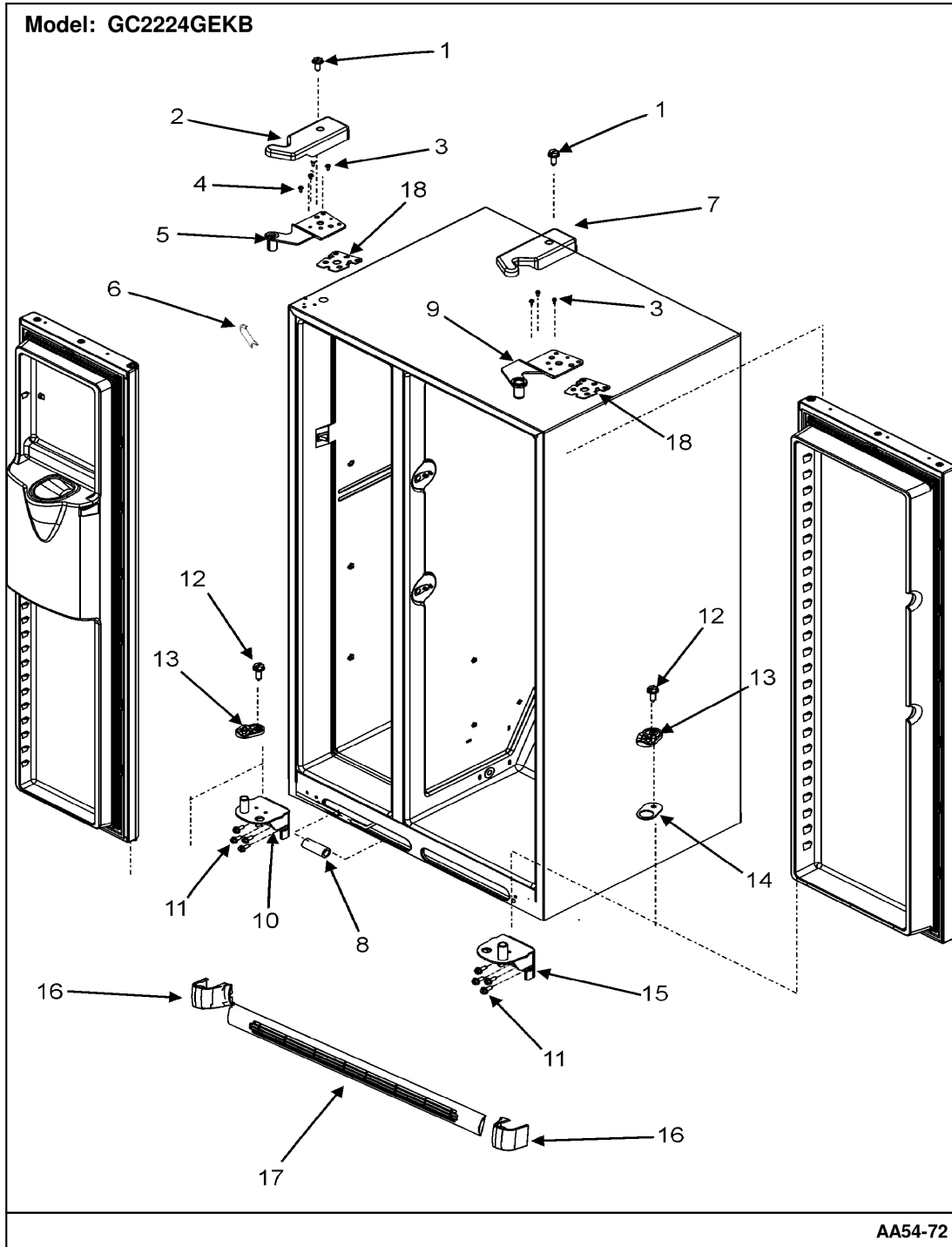
Section: FOUNTAIN

No.	Part No.	Description	Series	Qty
1	67005035	WATERLINE ASSY.	10	1
-	M0108105	CLAMP, TUBE	10	2
2	12598902B	ACTR PAD FRAME ASSY. (BLK)	10	1
3	M0104102	CLIP, CORD	10	3
4	12665101	SEAL, ICE CHUTE	10	1
5	12563401	INSUL, CHUTE DOOR**	10	1
6	12562701	DOOR, ICE CHUTE	10	1
7	67004119	HINGE, ICE CHUTE	10	1
8	12565502	SPRING, CHUTE DR	10	1
9	67005010	EXTENSION, ICE CHUTE	10	1
-	M0238642	SCREW, SM Note: SCREW, EXTENSION	10	2
10	67002170	SOLENOID	10	1
-	M0200314	SCREW, MACH Note: SCREW, SOLENOID	10	1
11	67003741	BULB, LIGHT (BLUE)	10	1
12	12617501	SOCKET, LIGHT	10	1
13	67004900	FACADE (BLK)	10	1
14	67004901	INSERT, FACADE (BLK)	10	1
15	M0223230	SCREW, MOUNTING Note: SCREW, FACADE	10	2
16	Y67003722	TRAY, SUMP (BLK)	10	1
17	67005013	BOARD, CONTROL	10	1
18	M0237902	SCREW,HI/LO Note: SCREW, BOARD	10	1
19	12575501	SWITCH, LIMIT	10	1

*Color Code (-)=Not Shown #=Series, Serial Prefix or Run No., N=Not Available

Section: HINGES

Model: GC2224GEKB



AA54-72

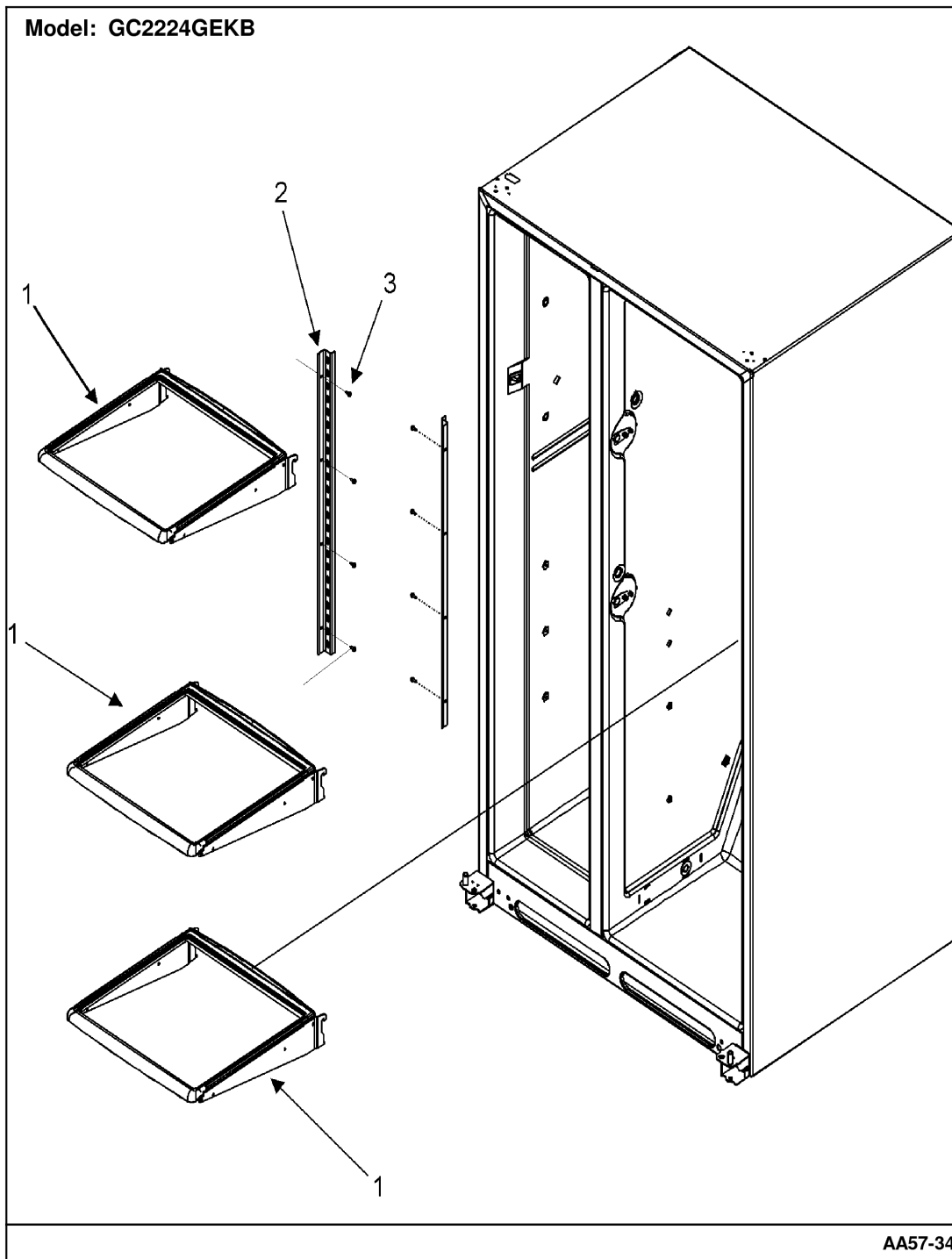
Section: HINGES

No.	Part No.	Description	Series	Qty
1	M0202327	SCREW-MACH Note: SCREW, HINGE COVER	10	2
2	12629802B	COVER, TOP HINGE (LT-BLK)	10	1
3	M0238731	SCREW, TF Note: SCREW, TOP HINGE	10	6
4	M0202321	SCREW, MACH	10	1
5	12626902ED	HINGE, TOP (LT-BLK)	10	1
6	67003485	COVER, CORNER (BLK)	10	2
7	12629801B	COVER, TOP HINGE (RT-BLK)	10	1
8	61006182	UNION, TUBE (5/16"-5/16")	10	1
9	12626901ED	HINGE, TOP (RT-BLK)	10	1
10	12636901ED	HINGE, BOTTOM (LT-BLK)	10	1
11	67003858	SCREW, BOTTOM HINGE Note: SCREW, BOTTOM HINGE	10	8
12	M0220431	SCREW, TC Note: SCREW, DOOR CLOSURE	10	2
13	12431302	CLOSURE, DOOR (BLK)	10	2
14	10361806	SHIM, DR CLOSURE (BLK)	10	1
15	12636902ED	HINGE, BOTTOM (RT-BLK)	10	1
16	12630301B	COVER, LWR HINGE (BLK)	10	2
-	12627302	CLIP, TOE GRILLE	10	2
17	67002224	GRILLE ASSY., TOE (BLK) Note: (INCL. CLIPS)	10	1
18	12695601	SHIM, TOP HINGE	10	2

*Color Code (-)=Not Shown #=Series, Serial Prefix or Run No., N=Not Available

Section: REFRIGERATOR SHELVES

Model: GC2224GEKB



AA57-34

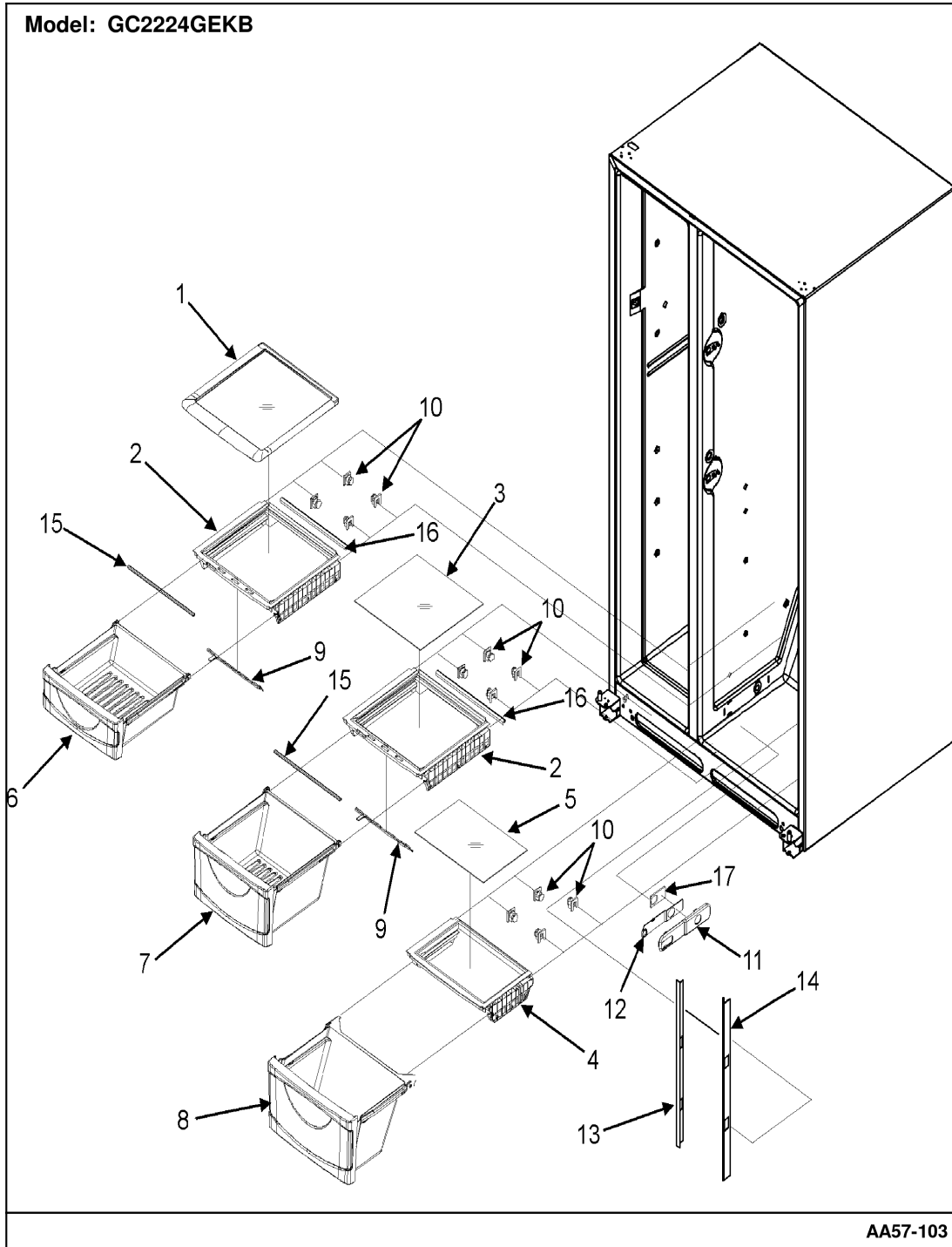
Section: REFRIGERATOR SHELVES

No.	Part No.	Description	Series	Qty
1	67005113	SHELF, STATIONARY	10	3
2	67003839	RAIL, L/R SM SXS	10	2
3	M0211016	SCREW, SM Note: SCREW, RAIL	10	6

*Color Code (-)=Not Shown #=Series, Serial Prefix or Run No., N=Not Available

Section: CRISPER ASSEMBLY

Model: GC2224GEKB



AA57-103

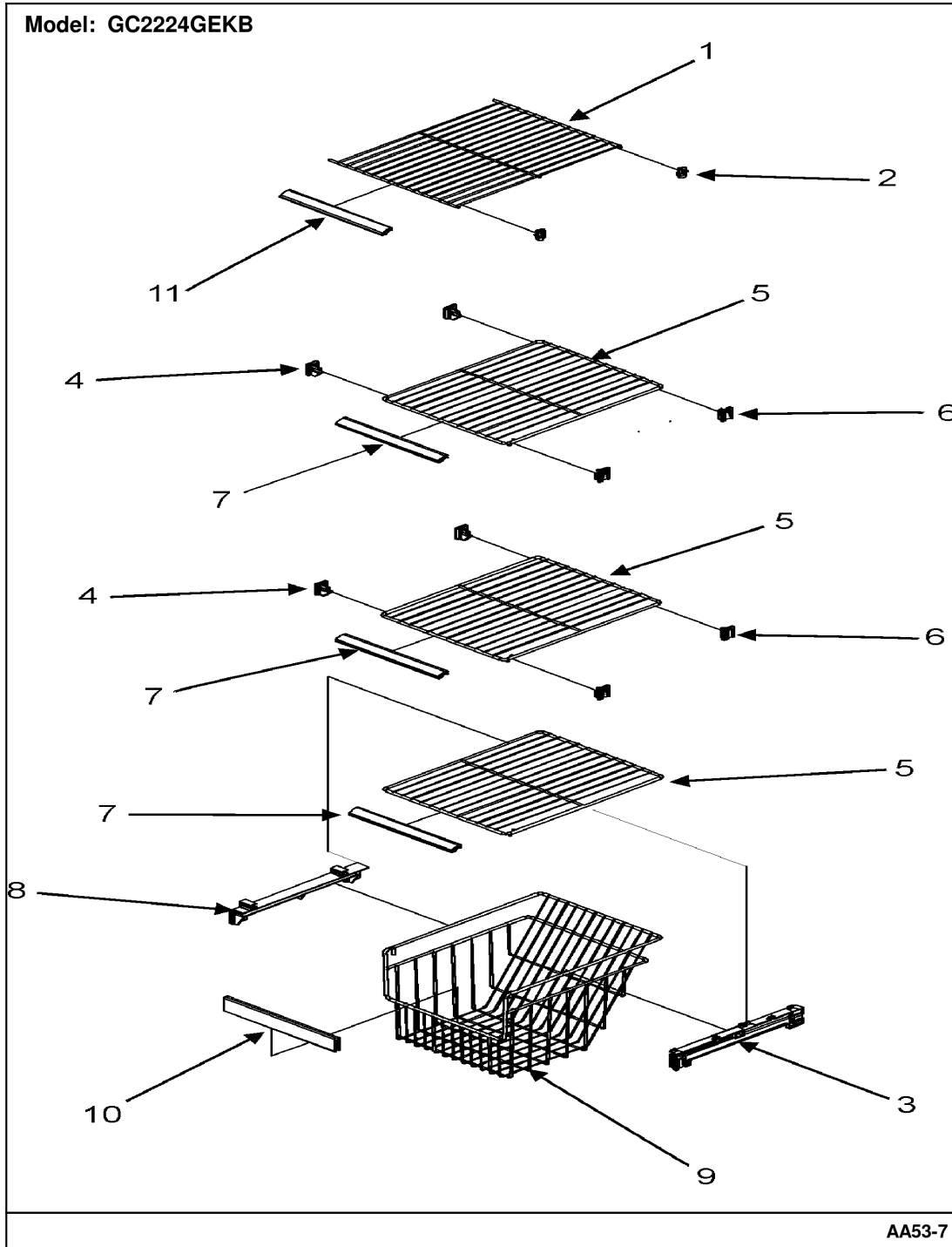
Section: CRISPER ASSEMBLY

No.	Part No.	Description	Series	Qty
1	67004130	SHELF, CRISPER TOP	10	1
2	67004140	FRAME, CRISPER SHELF	10	2
3	67004246	GLASS, CRISPER SHELF	10	1
4	67004247	FRAME, MEAT SHELF	10	1
5	67004132	GLASS, MEAT SHELF	10	1
6	67005114	PAN, SM CRISPER	10	1
7	67004963	PAN, LG CRISPER	10	1
8	67004487	PAN, MEAT	10	1
9	67004168	SLIDE, CONTROL	10	2
10	12603701	SUPPORT, CRISPER FRAME	10	12
11	67004175	HOUSING, TEMP. CONTROL	10	1
12	67004176	SLIDE, TEMP. CONTROL	10	1
13	67004170	PILLAR (LT)	10	1
14	67004171	PILLAR (RT)	10	1
15	67004889	SEAL, 36" CRISPER FRONT	10	2
16	67004249	SEAL, CRISPER FRAME (REAR)	10	2
17	67004177	GASKET, TEMP. CONTROL	10	1

*Color Code (-)=Not Shown #=Series, Serial Prefix or Run No., N=Not Available

Section: FREEZER SHELVES

Model: GC2224GEKB



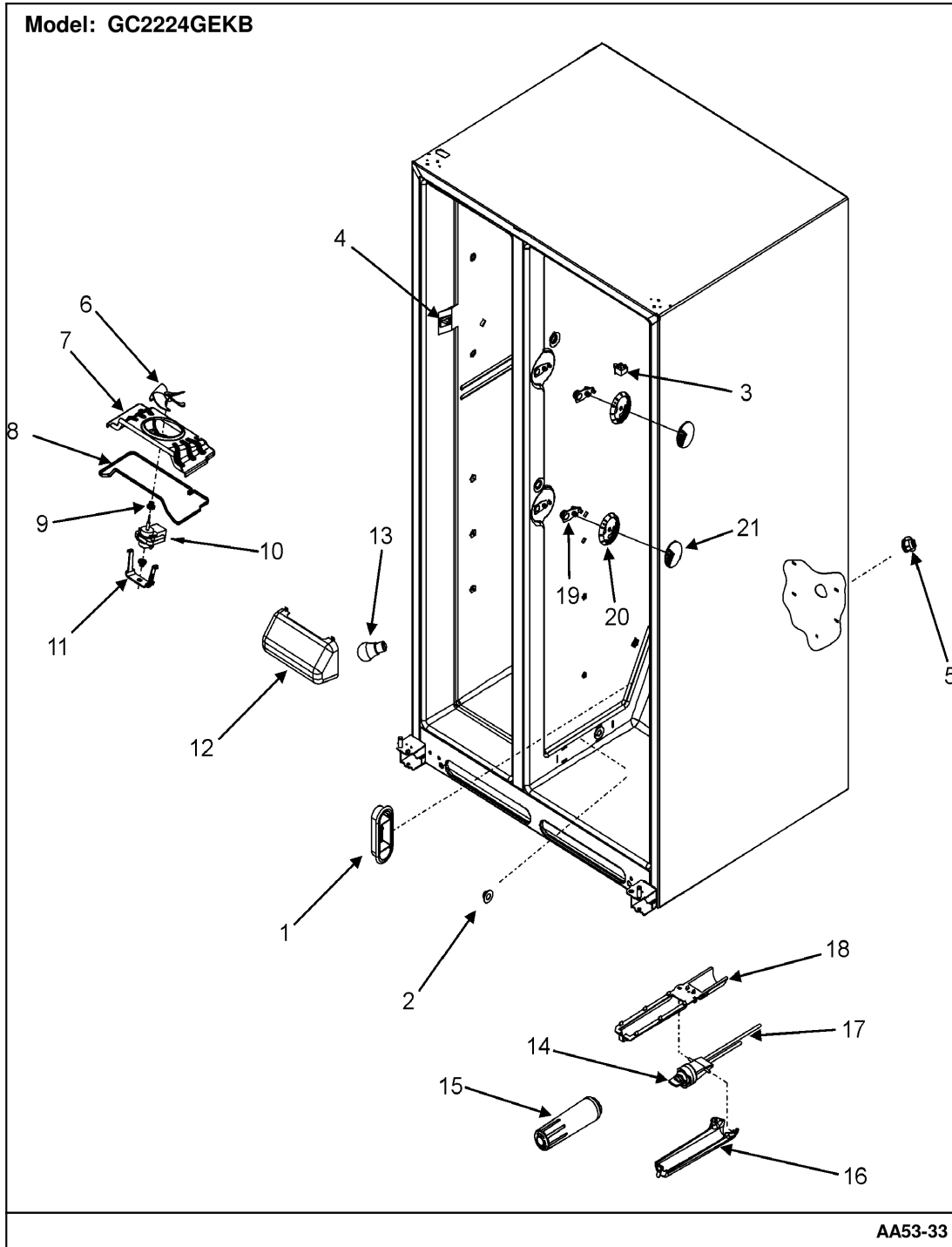
Section: FREEZER SHELVES

No.	Part No.	Description	Series	Qty
1	67003895	SHELF, UPR FRZ	10	1
2	C8973801	SUPPORT, FRZ SHELF	10	2
3	67004319	RAIL, BASKET (RT)	10	1
4	12015002	SUPPORT, SHELF (LT)	10	4
5	67004691	SHELF, LWR FRZ	10	3
6	10941102	SUPPORT, SHELF (RT)	10	4
7	12314101	TRIM, BASKET/SHELF Note: TRIM, LWR SHELF	10	3
8	67004317	RAIL, BASKET (LT)	10	1
9	67004320	BASKET, LW FZ	10	1
10	67004252	TRIM, FZ BASKET	10	1
11	12314102	TRIM, BASKET/SHELF Note: TRIM, UPR SHELF	10	1

*Color Code (-)=Not Shown #=Series, Serial Prefix or Run No., N=Not Available

Section: EVAP FAN/CRISP LIGHT/WATER FILTER

Model: GC2224GEKB



AA53-33

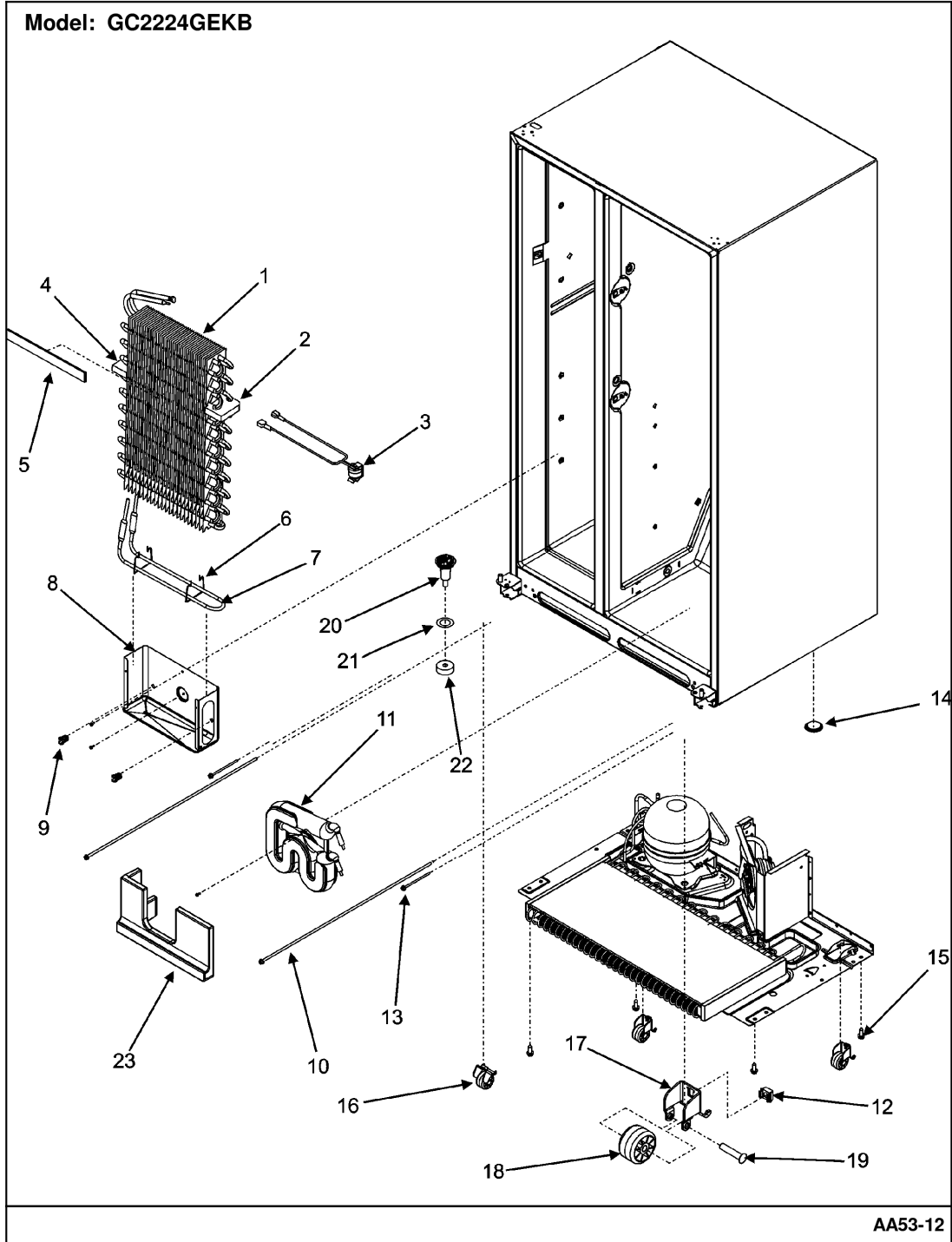
Section: EVAP FAN/CRISP LIGHT/WATER FILTER

No.	Part No.	Description	Series	Qty
1	12634801	GRILLE, RETURN AIR	10	1
2	67002826	PLUG, AIR TUNNEL	10	1
3	12466104	SWITCH, REF LIGHT	10	1
4	12466103	SWITCH, LIGHT	10	1
5	67005016	SOCKET, LIGHT	10	1
6	12217201	FAN, EVAPORATOR	10	1
7	67004253	SHROUD, EVAP	10	1
8	67001508	GASKET Note: GASKET, SHROUD	10	1
9	67002780	GROMMET, FAN MOTOR (BLK)	10	2
10	67005023	MOTOR, EVAP FAN	10	1
11	67003083	CLIP Note: CLIP, EVAP MOTOR	10	1
12	67001507	SHIELD, CRISPER LIGHT	10	1
13	67002552	BULB, LIGHT (40W-250V)	10	1
14	67003146	PLUG, BYPASS Note: PLUG, BYPASS	10	1
15	67003640	FILTER, WATER Note: FILTER, WATER	10	1
16	12568001	COVER, FILTER	10	1
17	67004843	HEAD, WATER FILTER	10	1
18	12688503	PLATE, FILTER BACKING	10	1
19	67002827	CLIP, CHILLER CONTROL	10	2
20	67002225	CONTROL, CHILLER	10	2
21	67004525	GRILLE, CHILLER CONT-JA	10	2

*Color Code (-)=Not Shown #=Series, Serial Prefix or Run No., N=Not Available

Section: EVAPORATOR/ROLLERS/WATER TANK

Model: GC2224GEKB



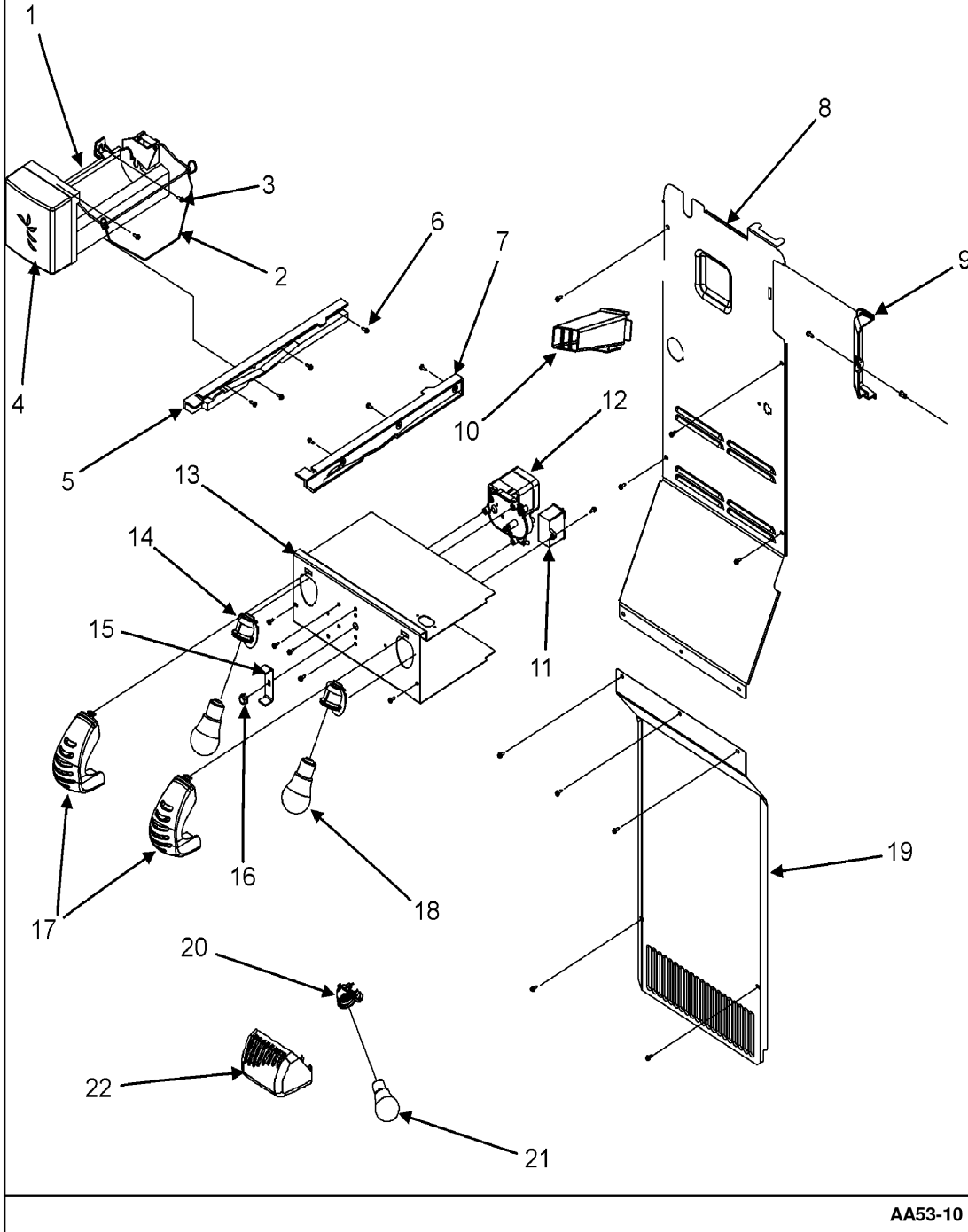
Section: EVAPORATOR/ROLLERS/WATER TANK

No.	Part No.	Description	Series	Qty
1	12001940	EVAP KIT (SXS)--W	10	1
2	12590102	BLOCK, AIR COIL (RT)	10	1
3	67004757	THERMOSTAT, DEFROST	10	1
4	12590101	BLOCK, AIR COIL (LT)	10	1
5	67002226	GASKET, FOAM	10	1
6	10428101	CLIP, EVAP HEATER	10	2
7	67005024	HEATER, EVAP	10	1
8	12558101WD	TRAY, EVAP DRIP	10	1
-	M0224416	SCREW, SM Note: SCREW, TRAY	10	2
9	10623003	CLIP, EVAPORATOR	10	2
10	10093315	SCREW, ADJUSTING (ROD)	10	2
-	M0211018	SCREW, SM Note: SCREW, TANK	10	1
11	67003504	TANK, WATER	10	1
12	M0286708	NUT, SPEED	10	4
13	12606102	BOLT, ROLLER ADJ	10	2
14	A3076901	PLUG, BUTTON	10	1
15	67001510	SCREW	10	4
16	67002227	ROLLER BRACKET ASSY	10	4
17	12456801	BRACKET, ROLLER	10	4
18	10450602	ROLLER	10	4
19	M1205302	RIVET	10	4
20	12456901	FUNNEL, DRAIN	10	1
21	M0500703	SEAL, O RING	10	1
22	B8381501	GASKET, DRAIN TUBE	10	1
23	67004309	BLOCK, WATER TANK	10	1
-	67005025	HEATER/HARNESS, FRZ	10	1

*Color Code (-)=Not Shown #=Series, Serial Prefix or Run No., N=Not Available

Section: FREEZER COMPARTMENT

Model: GC2224GEKB



AA53-10

21

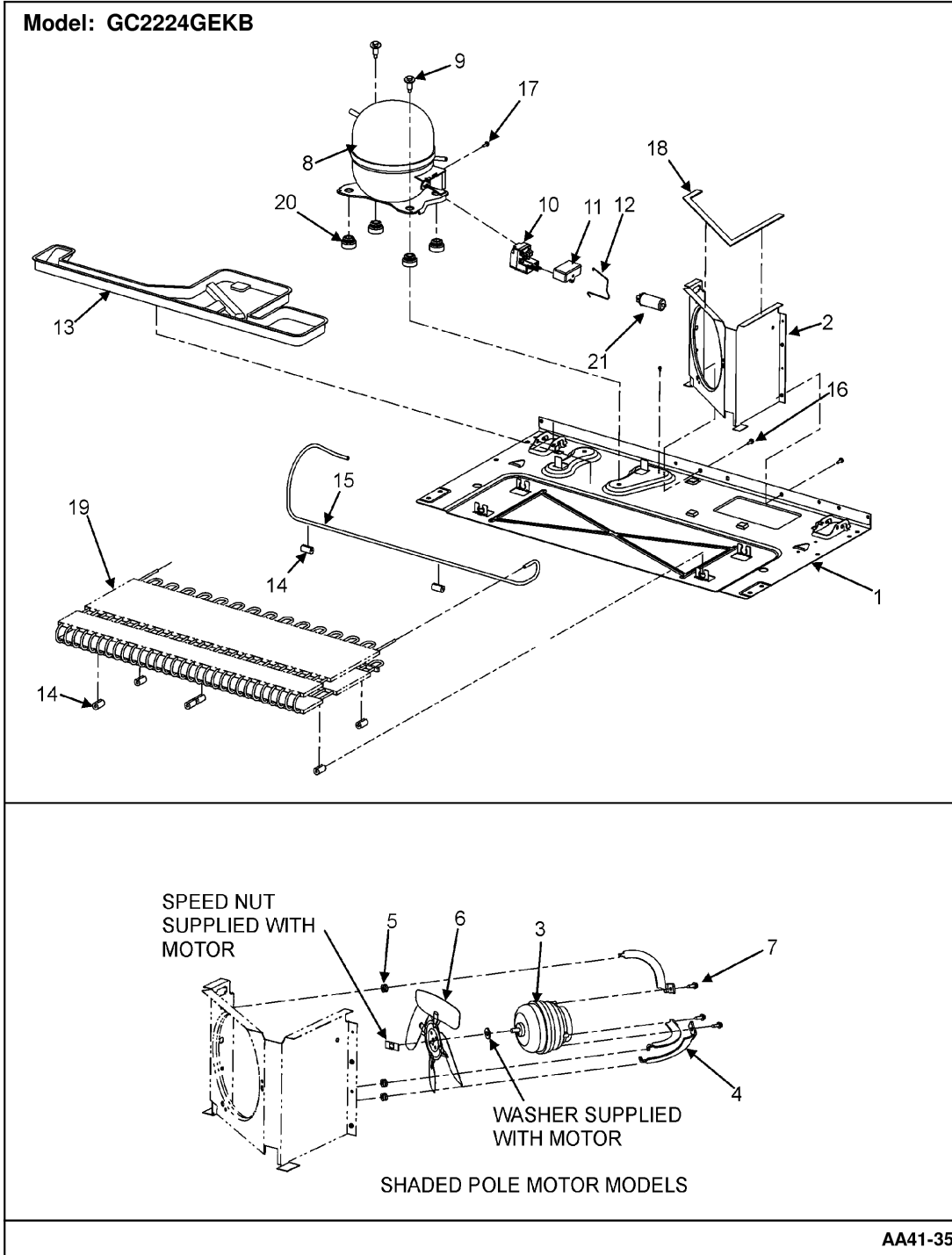
Section: FREEZER COMPARTMENT

No.	Part No.	Description	Series	Qty
-	67005026	BRKT, ICE MAKER	10	1
1	D7846305	ICE MAKER ASSY. (230V-50HZ)*	10	1
2	12671401	ASSY, IM ARM/WIRE	10	1
3	M0238833	SCREW SHOULDER Note: SCREW, ICE MAKER	10	2
4	12582501	COVER, ICE MAKER	10	1
5	67004322	GLIDE, FRZ. (LT)	10	1
6	M0213530	SCREW, SM (STNLS) Note: SCREW, GLIDE (STNLS)	10	7
7	67004323	GLIDE, FRZ. (RT)	10	1
-	M0238616	SCREW, SM Note: SCREW, BACK	10	4
8	67003580	BACK, INNER FZ Note: BACK, INNER FZ	10	1
9	12583101	COVER, SUPPLY AIR	10	1
-	M0238616	SCREW, SM Note: SCREW, COVER	10	1
-	M0580205	GROMMET, SCREW	10	1
10	67003581	DUCT, QUICK ICE	10	1
-	M0226528	SCREW, TC Note: SCREW, CAPACITOR	10	1
11	C8931609	CAPACITOR (420 VAC)	10	1
-	67005120	HARNESS, AUGER MOTOR	10	1
-	M0226528	SCREW, TC Note: SCREW, MOTOR	10	3
12	67003224	MOTOR, AUGER	10	1
13	67002887	COVER, AUGER MOTOR	10	1
-	M0238616	SCREW, SM Note: SCREW, COVER	10	2
14	67005016	SOCKET, LIGHT	10	2
15	10114901	DRIVER (ICE MAKER)	10	1
16	M0223101	NUT, LOCKING	10	1
17	67004433	SHIELD, FZ LIGHT	10	2
18	67002552	BULB, LIGHT (40W-250V)	10	2
19	67004192	COVER, EVAP	10	1
-	M0238616	SCREW, SM Note: SCREW, COVER	10	5
20	67005016	SOCKET, LIGHT	10	1
21	67002552	BULB, LIGHT (40W-250V)	10	1
22	67004135	SHIELD, FZ LIGHT	10	1

*Color Code (-)=Not Shown #=Series, Serial Prefix or Run No., N=Not Available

Section: COMPRESSOR

Model: GC2224GEKB



AA41-35

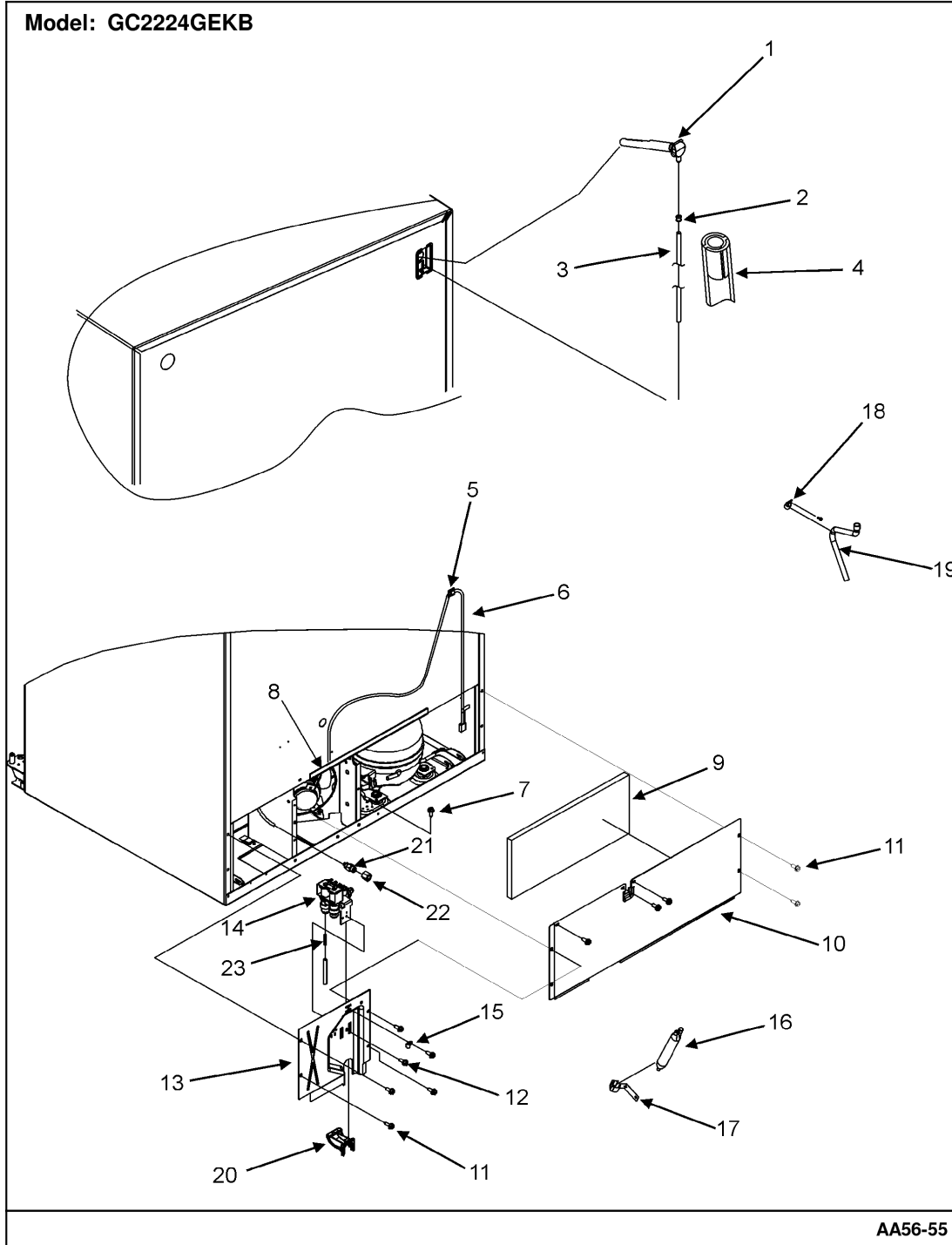
Section: COMPRESSOR

No.	Part No.	Description	Series	Qty
1	67001512	PAN, BASE	10	1
2	12687101	SHROUD, CONDENSER	10	1
3	67005104	MOTOR, CONDENSER FAN	10	1
4	67003354	BRACKET, CONDENSER MOTOR	10	3
5	61004743	GROMMET, BRACKET	10	3
6	12587601	BLADE, COND FAN	10	1
7	M0223816	SCREW, TR Note: SCREW, BRACKET	10	3
8	67005028	COMPRESSOR (TPG1410YXC)X-PORT	10	1
9	N M0221523	SCREW, SHLDR Note: SCREW, COMPRESSOR	10	3
10	67004815	OVERLOAD/RELAY	10	1
11	67002815	CAPACITOR	10	1
12	67003179	STRAP, BALE	10	1
13	67004744	PAN, DRAIN	10	1
14	12578601	GROMMET, CONDENSER	10	8
15	67004700	TUBE, DISCHARGE	10	1
16	M0238616	SCREW, SM Note: SCREW	10	3
17	M0231604	SCREW, TF Note: SCREW	10	2
18	61003210	SEAL Note: SEAL, COND. SHROUD	10	1
-	67002235	BLOCK-EPS COND	10	3
19	67004682	CONDENSER *	10	1
20	67003493	GROMMET, COMPRESSOR	10	4
21	67005062	FILTER, LINE	10	1
-	67005116	HARNESS, MC	10	1

*Color Code (-)=Not Shown #=Series, Serial Prefix or Run No., N=Not Available

Section: CABINET BACK

Model: GC2224GEKB



AA56-55

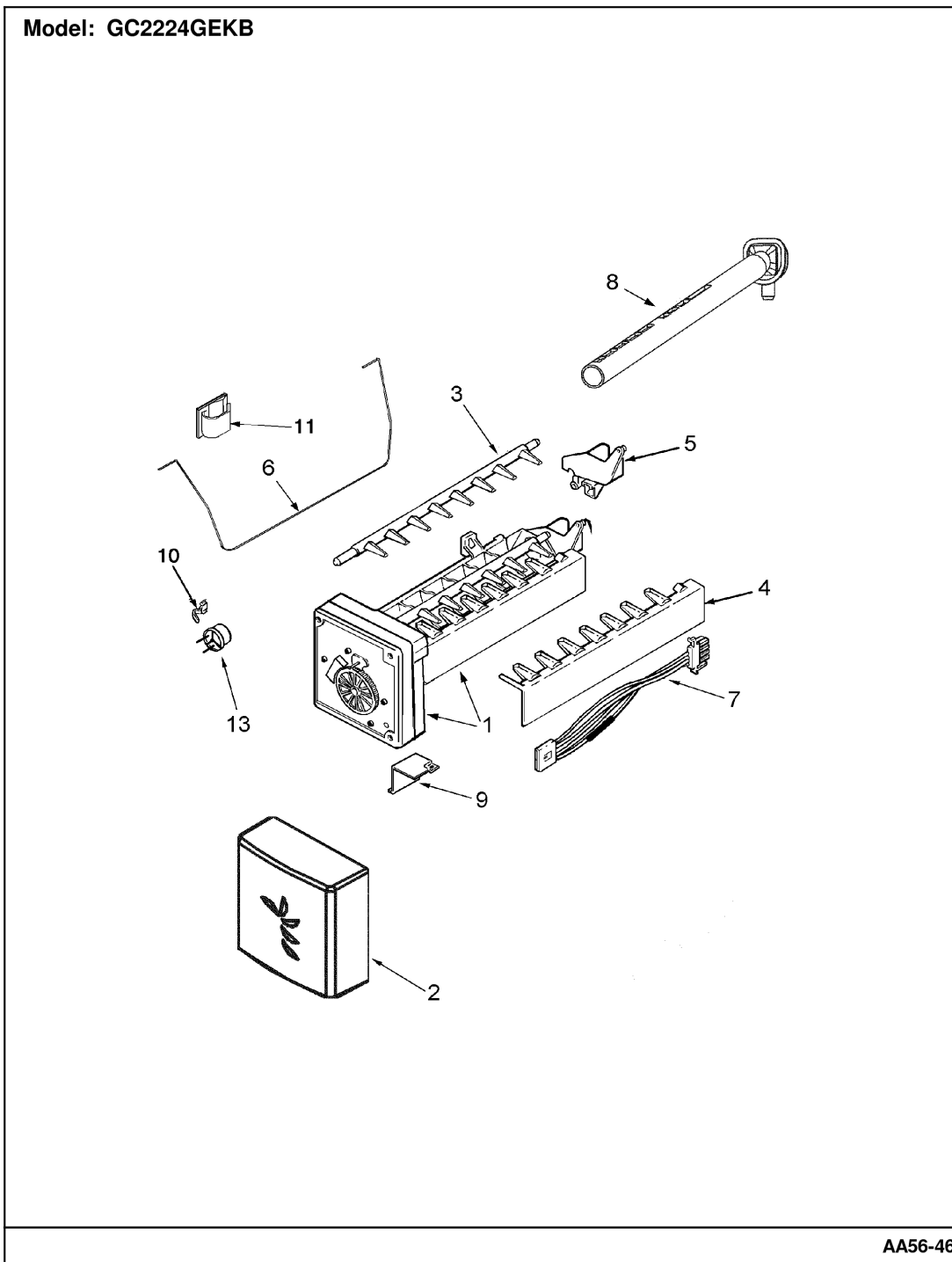
Section: CABINET BACK

No.	Part No.	Description	Series	Qty
1	67003663	ELBOW, FILL TUBE	10	1
2	M0114003	CLIP, SPEED	10	1
3	67003360	TUBE, PLASTIC	10	1
4	A3223101	INSERT, PLASTIC TUBE	10	1
5	M0104106	CLIP	10	1
6	67002229	CORD, POWER	10	1
7	N M0239216	SCREW, CA Note: SCREW	10	1
8	B5759649	GASKET, MC BACK	10	1
9	67003796	FIBER, ACOUSTIC	10	1
10	67002230	BACK, MACH COMP	10	1
11	M0238616	SCREW, SM Note: SCREW, COVER	10	11
12	M0251015	SCREW Note: SCREW, WATER VALVE	10	1
13	67005117	COVER, WATER VALVE	10	1
14	67005118	VALVE, DUAL WATER	10	1
15	M0108105	CLAMP, TUBE	10	2
16	B2150504	DRIER	10	1
-	67002999	SCREW, SM Note: SCREW, CLIP	10	1
17	10547002	CLIP, DRIER	10	1
18	M0102303	CLAMP	10	1
-	M0220617	SCREW Note: SCREW, CLAMP	10	1
19	12580401	TUBE, DRAIN	10	1
20	67004101	SWEEP, DUAL TUBE	10	1
21	67005003	UNION (5/16")	10	1
22	67004844	NUT (5/16")	10	1
23	A1055104	SPRING, ANTI-KINK	10	2

*Color Code (-)=Not Shown #=Series, Serial Prefix or Run No., N=Not Available

Section: ICE MAKER

Model: GC2224GEKB



AA56-46

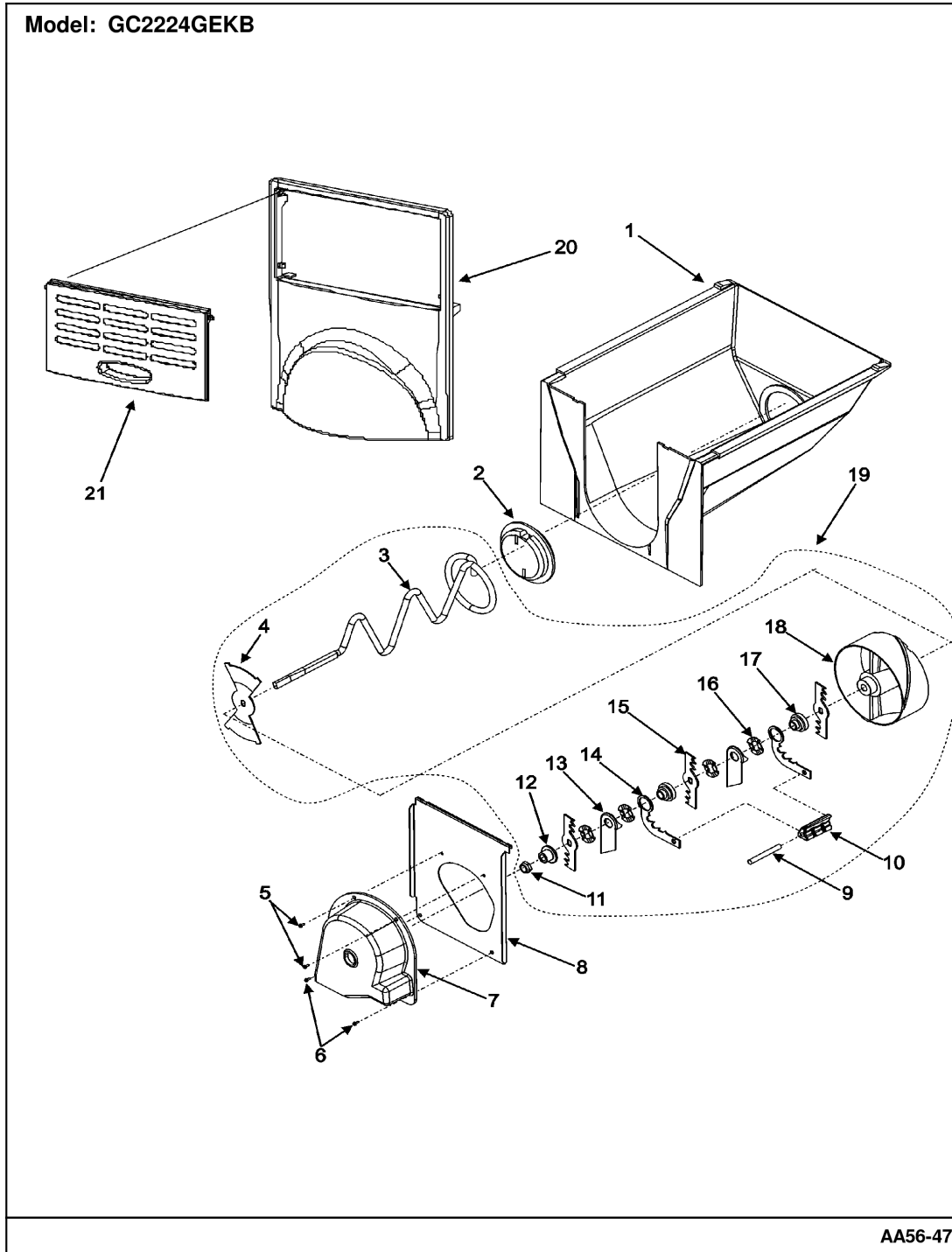
Section: ICE MAKER

No.	Part No.	Description	Series	Qty
1	D7846305	ICE MAKER ASSY. (230V-50HZ)*	10	1
-	67005026	BRKT, ICE MAKER	10	1
-	M0238833	SCREW SHOULDER Note: SCREW, ICE MAKER	10	2
2	12582501	COVER, ICE MAKER	10	1
3	95101-1	EJECTOR, ICE	10	1
4	95102-1	STRIPPER, ICE	10	1
5	95100-1	INLET, WATER	10	1
6	12671401Q	IM ARM/WIRE ASSY	10	1
7	67002281	HARNES, ICE MAKER	10	1
8	67003663	ELBOW, FILL TUBE	10	1
9	95107-1	BRACKET, MODULE & HEATER	10	1
-	95108-1	SCREW, BRACKET	10	1
10	95104-1	RETAINER, THERMOSTAT	10	1
11	M0104106	CLIP	10	2
12	95092-1	THERMOSTAT	10	1
- N	95093-1	CEMENT, ALUMILASTIC (4 OZ.)	10	1
-	67005031	COUPLING	10	1
-	D7846203	SHIELD, ICE MAKER Note: (INCL. 1/4" X 25' COPPER TUBE, NON PIERCING SADDLE VALVE, & 1/4" COMPRESSION NUT & SLEEVE)	10	1
-	B5720302	CLIP	10	1

*Color Code (-)=Not Shown #=Series, Serial Prefix or Run No., N=Not Available

Section: ICE BUCKET ASSY.

Model: GC2224GEKB



AA56-47

Section: ICE BUCKET ASSY.

No.	Part No.	Description	Series	Qty
1	12517801	BUCKET, ICE CRUSH	10	1
2	D7749401	CAP, HELIX END	10	1
3	10114401	AGITATOR, ICE	10	1
4	10113801	BAR, CRSH ICE BUCKET	10	1
5	59001208	SCREW, HEX HEAD	10	2
6	M0238616	SCREW, SM	10	2
7	67002271	COVER, BLADE	10	1
8	10115001	FRONT, ICE CRUSHER	10	1
9	M1200108	PIN, ROLL	10	1
10	10114101	ANCHOR, BLADE	10	1
11	M0223101	NUT, LOCKING	10	1
12	10113901	SPACER, COVER	10	1
13	10275201	DAMPER, ICE	10	2
14	10114601	BLADE, STATIC	10	2
15	10114501	BLADE, ROTATING	10	3
16	10275101	WASHER, WAVED	10	4
17	10114301	WASHER STEPPED	10	2
18	67002052	WHEEL, CRSH ICE	10	1
19	67003350	CRUSHED ICE AGITATOR ASSY	10	1
20	67004255	COVER, ICE BUCKET	10	1
21	67004256	DOOR, ICE BUCKET	10	1

*Color Code (-)=Not Shown #=Series, Serial Prefix or Run No., N=Not Available

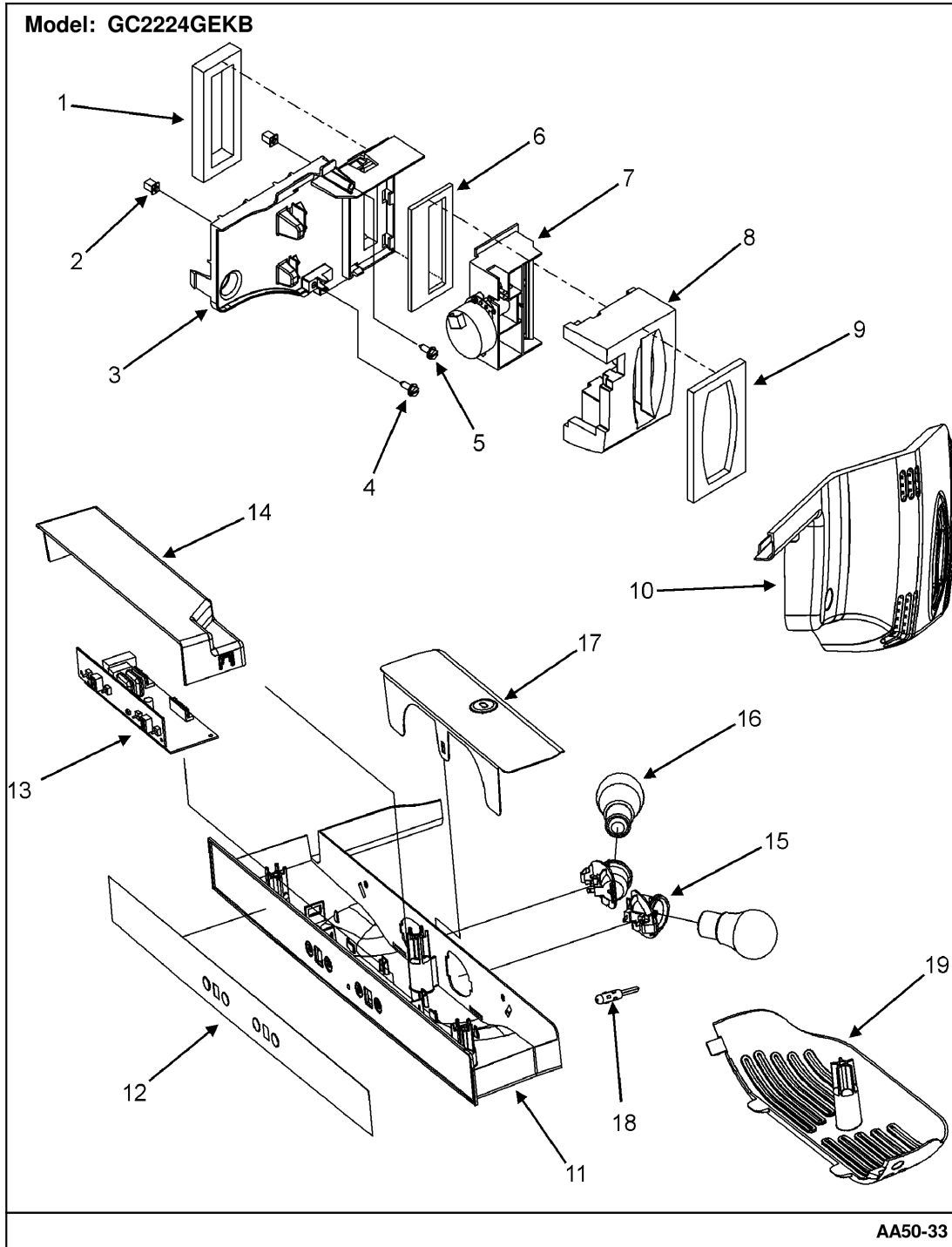
Section: SUPPLEMENTAL INFORMATION

No.	Part No.	Description	Series	Qty
-	12842106	MANUAL, USE & CARE	10	1
-	67005119	SHEET, TECH DATA	10	1
-	16023180	SVC MAN, SXS EXPORT	10	1

*Color Code (-)=Not Shown #=Series, Serial Prefix or Run No., N=Not Available

Section: CONTROLS

Model: GC2224GEKB



AA50-33

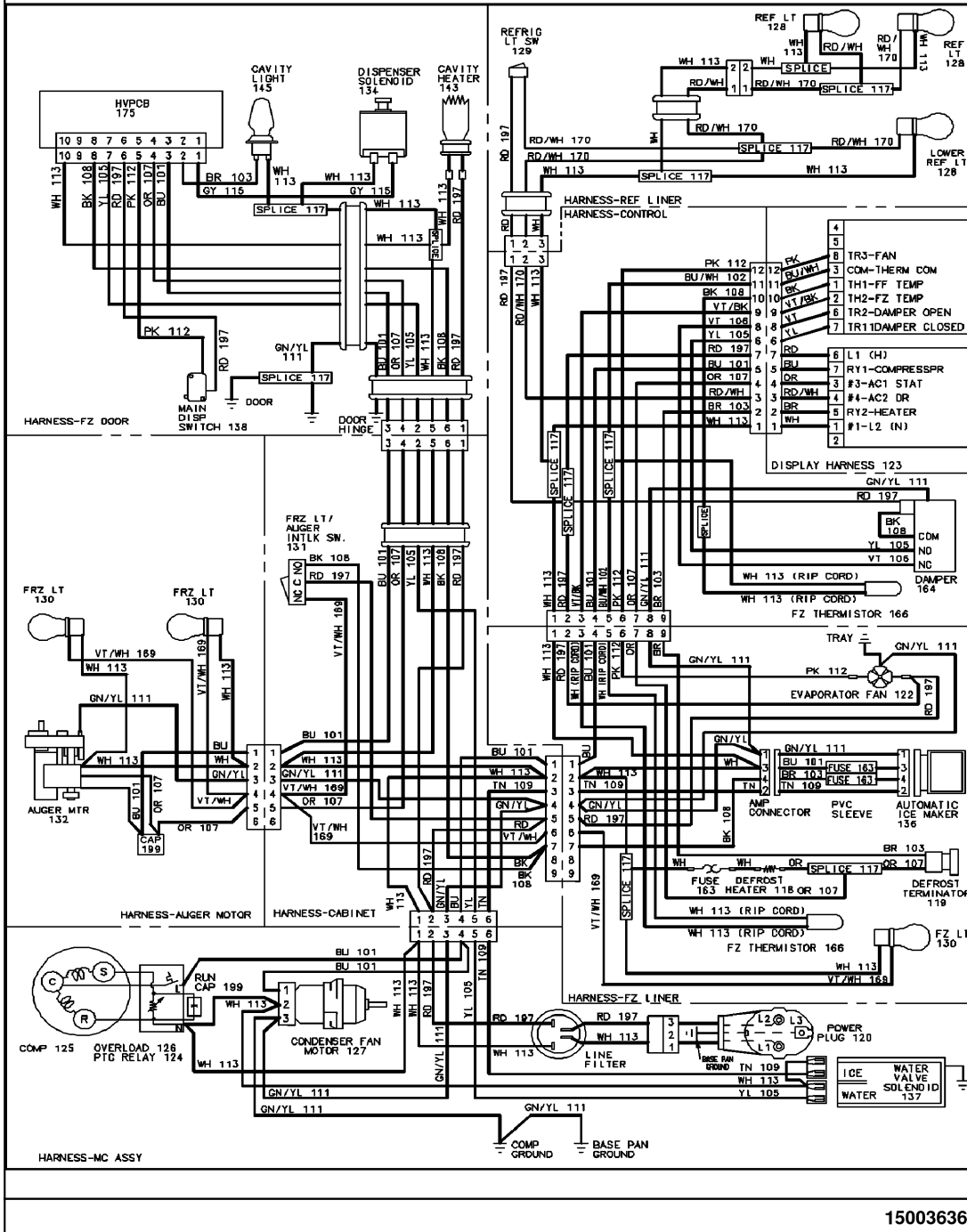
Section: CONTROLS

No.	Part No.	Description	Series	Qty
1	67004031	GASKET, DAMPER	10	1
2	M0580205	GROMMET, SCREW	10	3
3	67004447	BRACKET, ELEC CONTROL	10	1
4	M0211018	SCREW, SM	10	1
5	N M0216539	SCREW Note: SCREW, BRACKET	10	1
6	12582801	GASKET, DAMPER	10	1
7	67005014	DAMPER, CONTROL	10	1
8	67003828	INSUL, DAMPER	10	1
9	12582901	GASKET, CONTROL COVER	10	1
10	67004400	COVER, ELEC CONTROL	10	1
-	M0238636	SCREW-SM Note: SCREW, CONTROL HOUSING	10	5
11	67004754	HOUSING, CONTROL	10	1
12	67005112	OVERLAY	10	1
13	12002509	BOARD KIT, CONTROL	10	1
14	67004755	COVER, CONTROL BOARD	10	1
15	67005016	SOCKET, LIGHT	10	2
16	67002552	BULB, LIGHT (40W-250V)	10	2
17	67004157	REFLECTOR, LIGHT	10	1
18	12002355	THERMISTOR KIT	10	1
19	67004753	LENS, REF. LIGHT	10	1
-	67002417	PLUG, BUTTON	10	1
-	67004526	HARNES, CONTROL	10	1

*Color Code (-)=Not Shown #=Series, Serial Prefix or Run No., N=Not Available

Section: WIRING INFORMATION

Model: GC2224GEKB



15003636

