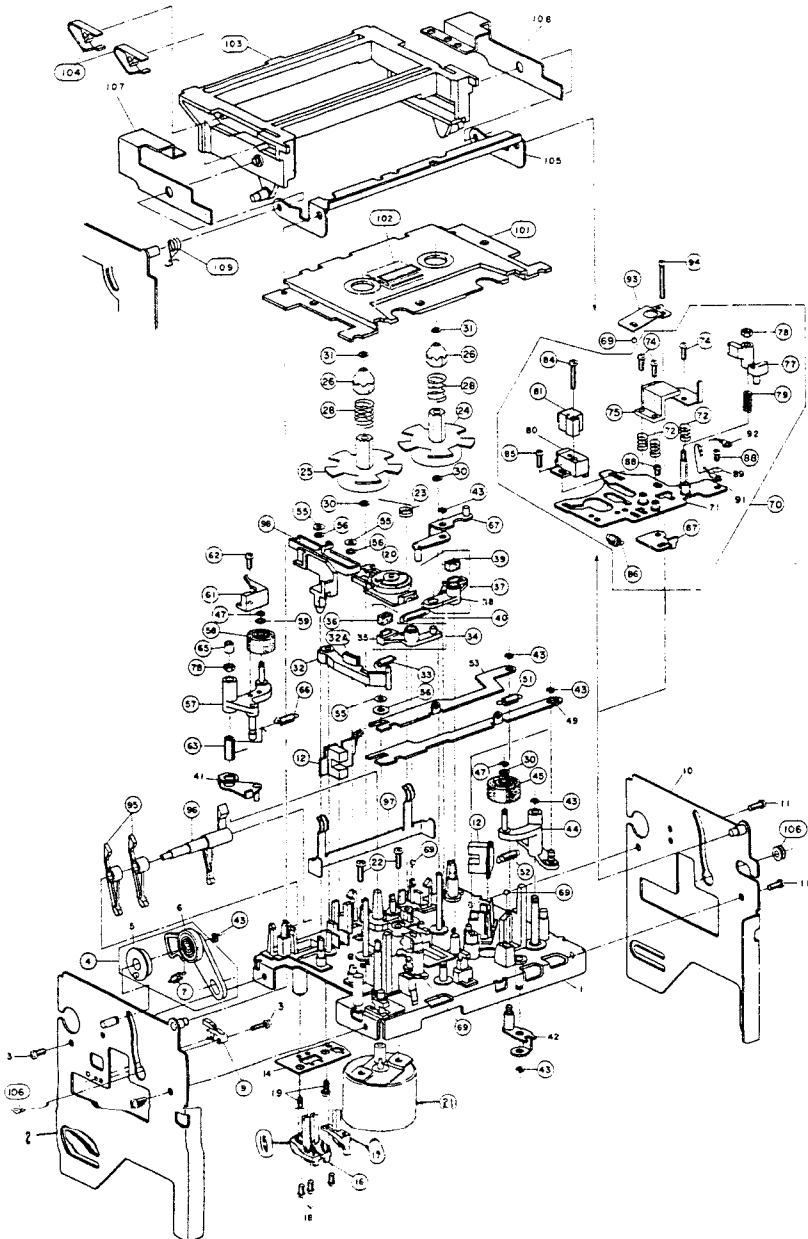


MECHA BLOCK



2. MECHA BLOCK

Ref.No.	Part No.	Description
4	MZ-388144J	OIL CLUTCH PART
7	ZG-388145J	SP PULL OIL CLUTCH(2)
9	ES-372912	SW LEAF SPPB21 01-2 [SW904]
12	ET-345091	DETECTOR SPI-201-40 B.C [PH1]
15	ES-336990	SW LEAF BSW-169 01-1 NO [SW901]
16	ES-336990	SW LEAF BSW-169 01-1 NO [SW902]
17	ES-336990	SW LEAF BSW-169 01-1 NO [SW903]
20	TC-336605	WIND IDLER ASSY
21	BM-T2030A120D	REEL MOTOR BLK GX-95
23	ZG-336140	SP TORSION IDLER
24	MT-395947J	REEL TABLE (R) PART
25	MT-395948J	REEL TABLE (L) PART
26	MT-349681	REEL RETAINER(B)
28	ZG-395944J	SP PUSH BT
30	ZW-305546	PW21X040X025PSL
31	ZW-343120	PW17X040X025PSL
32	BL-B336196	LEVER BT PART
32A	MZ-344983	FELT BT
33	ZG-330078	SP T2-03.2/0.20-09.0 T2-038
34	BL-T2030A160A	LEVER BRAKE (A) BLK GX-F51
36	TC-336146	BRAKE RUBBER
37	BL-T2030A170A	LEVER BRAKE (B) BLK GX-F51
39	TC-336146	BRAKE RUBBER
40	ZG-312946	SP T1-03.2/0.29-16.0 T1-062
43	ZW-270088	RING E190SUP CMT
44	BL-B336150	ARM PINCH ROLLER (A) PART
45	MP-401746J	PINCH ROLLER(A-2)-B360
47	ZW-356657	RING E150SUP CMT
51	ZG-336175J1	SP PULL PINCH ROLLER (T)
52	ZG-321534	SP T2-03.2/0.29-12.5 T2-060
55	ZW-329422	RING CS 0300
56	ZW-306464	PW31X070X050STL CMT
57	BL-B336202	ARM PINCH ROLLER (B) PART
58	MP-336204	PINCH ROLLER (B)
59	ZW-381644	PW21X040X013PSL
61	HZ-387921J	GUIDE TAPE (B)(2)
62	ZS-608095	PAN20X05STL CMT
63	ZG-336206	SP TORSION RETURN
65	ZW-356166	N
66	ZG-336208	SP PULL PINCH ROLLER (S)
67	BL-B336155	ARM HEAD SLIDE PART
69	MV-357208	BALL 200STL
70	BH-T2047A060G	HEAD BLK GX-Z7100EV
72	ZG-336127	SP PUSH HEAD
74	ZS-330864	PAN20X07STL CMT
75	HR-H2410A010A	HEAD COMB RP4-10SR RP4-10SR
77	HZ-387920J	GUIDE TAPE(2)
78	ZW-618884	N20STL CMT 1
79	ZG-336130	SP PUSH GUIDE
81	HE-391975J	HEAD E HAJWB3721A
84	ZS-306126	PAN20X12STL CMT
85	ZS-417161	PAN23X04STL CMT
86	ZG-341972	SP PULL HEAD RETURN
87	HZ-336132	ADJUST PLATE
88	ZS-201407	PAN23X03STL CMT
93	ZG-336157	SP PLATE HEAD HOLD
94	ZS-342002	ST PAN26X16STL CMT
95	ML-336158	LEVER DETECTION (B)
96	ML-336159J2	LEVER DETECTOR(A)
97	ZG-336160	SP PLATE CASSETTE HOLDER (A)
98	TC-336161J1	SLIDE EJECT
101	BD-B365352-A	LID DECORATION (A) PART
102	ED-34244	D LED SLF-601C AMBER [D901]
103	SP-388188J1	LID CASE(2)
104	ZG-336615	SP PLATE CASSETTE HOLDER (B)
106	SZ-336166	COLLAR LID
109	ZG-387004J	SP TORSION RETURN

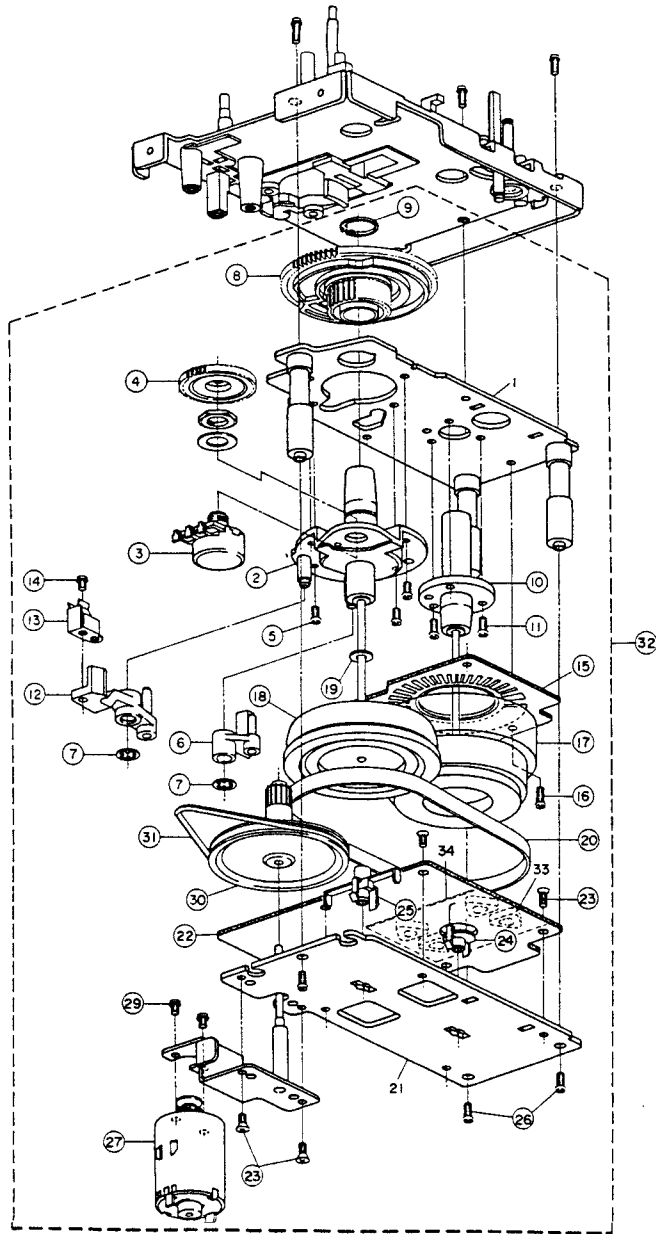
NOTE:

Parts will not be supplied if they are not listed in the parts list, even if they appear on the assembling illustrations with reference No.

3. MOTOR BLOCK (BLM-310C)

Ref.No.	Part No.	Description
2	TC-B336004A	HOLDER CAPSTAN (C-1) PART
3	EV-337052	VR ROTARY 16L10XOR B103
4	MZ-336005	GEAR POTENTION
5	ZS-432843	PAN26X04STL CMT
6	BL-B336007	LEVER BRAKE CAM PART
7	ZW-653163	RING CS 280STL PKR
8	MZ-336006	CAM WHEEL
9	ZW-336604	RETAINING RING O S930SUP ACP
10	TC-336002J1	HOLDER CAPSTAN (B)
11	ZS-355818	ST BR26X04STL CMT
12	BL-B336009	LEVER EJECT CAM PART
13	ZG-353158J2	SP PLATE EJECT
14	ZS-477876	PAN20X03STL CMT
15	EA-336012	PC FG
16	ZS-479474	PAN26X05STL CMT
17	BF-390568J1	FLYWHEEL (A) PART
18	BF-336025	FLYWHEEL (B)
19	ZW-309295	WASHER THRUST
20	MB-336026	BELT CAPSTAN
22	BA-M3103A030A	PCI (#) MOTOR BLK BLM-300
23	ZS-477887	CT526X05STL CMT
24	TC-336016	HOLDER THRUST (A)
25	TC-336027	HOLDER THRUST (B)
26	ZS-479474	PAN26X05STL CMT
27	BM-396252J	MOTOR OPERATION(PULLEY) PART
29	ZS-432674	PAN30X03STL CMT
30	MR-336019	PULLEY OPERATE
31	MB-336021	BELT OPERATION
32	BM-M3104A010C	MOTOR BLM-310C

MOTOR BLOCK (BLM-310C)



PARTS LIST

4. P.C BOARD BLOCK

Ref.No.	Part No.	Description
1A	BA-T2129A020C	PC(#) PREAMP BLK GX-75-2
1B	BA-T2129A020B	PC(#) PREAMP BLK GX-95-2
2	BA-T2128A030A	PC(#) SYSCON BLK GX-Z7100EV
3	BA-T2128A040C	PC POWER BLK GX-95-2

PC (#) PRE AMP BLK CONSISTS OF FOLLOWING P.C BOARD.

- PRE-AMP P.C BOARD
- OSC P.C BOARD
- HEADPHONE P.C BOARD

PC (#) SYSCON BLK CONSISTS OF FOLLOWING P.C BOARD.

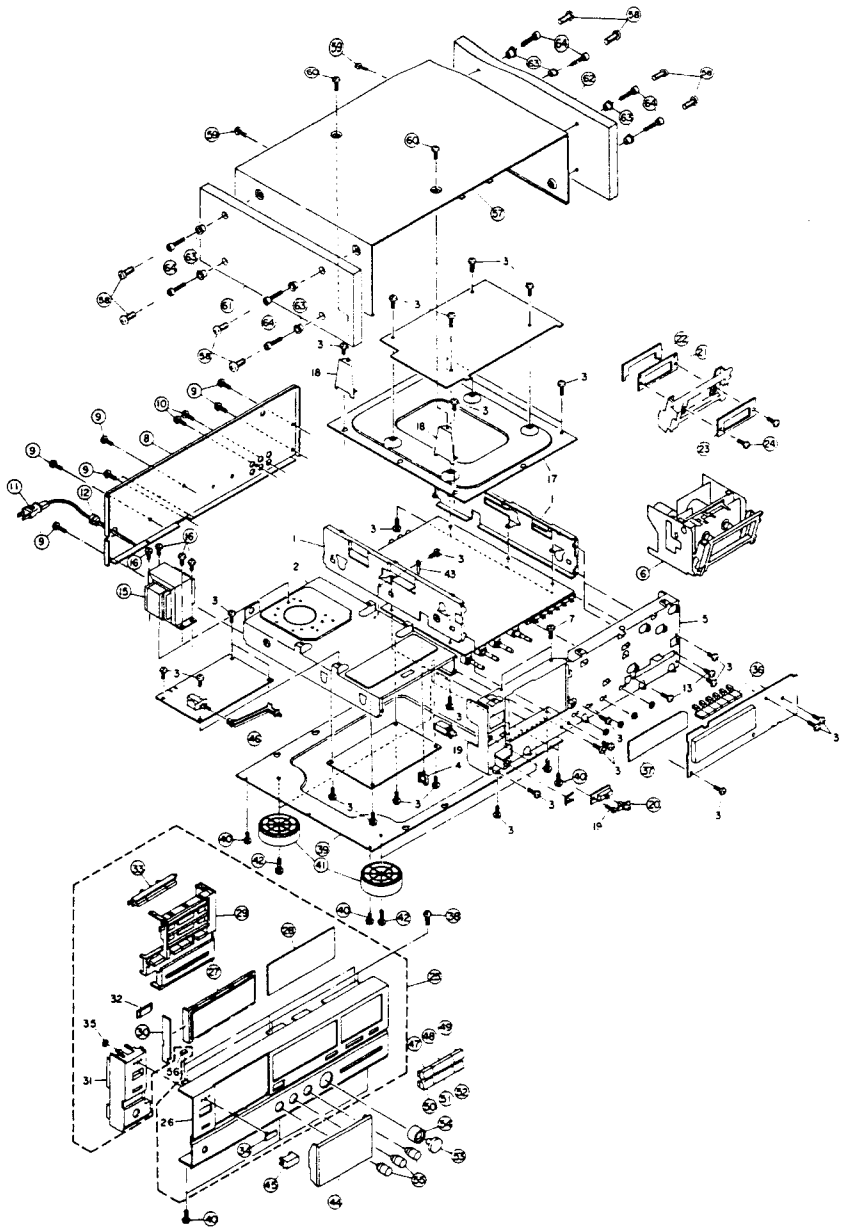
- SYSCON P.C BOARD
- OPERATION P.C BOARD
- TIMER SW P.C BOARD

5. PRE-AMP P.C BOARD

Ref.No.	Part No.	Description
D551	ED-624903	D SILICON H 1S2473
D552	ED-624903	D SILICON H 1S2473
D553	ED-624903	D SILICON H 1S2473
D554	ED-624903	D SILICON H 1S2473
D555	ED-624903	D SILICON H 1S2473
D801	ED-346545	D ZENER H HZ9C2L
D802	ED-346545	D ZENER H HZ9C2L
D811	ED-346540	D ZENER H HZ9B1L
D812	ED-346540	D ZENER H HZ9B1L
D841	ED-305655	D ZENER H HZ4 B3
FL331	EH-372101	FILTER DB 42B-5162-04
IC101	EI-389881J	IC NJM4580D-D
IC102	EI-393324J	IC M5218AL
IC103	EI-362587	IC M5238L
IC201	EI-359985	IC CX20187
IC251	EI-357498	IC M51143AL
IC301	EI-359985	IC CX20187
IC451	EI-362588	IC M5238P
IC501	EI-362587	IC M5238L
IC551	EI-310036	IC TC4066BP
IC601	EI-384868J	IC BU4030B
IC651	EI-373980	IC BA15218N
IC901	EI-393324J	IC M5218AL
J501A	EJ-344370	PIN J YKC21-0081 P 6P [GX-75-2]
J501B	EJ-397198J	PIN J YKC-21-0464 6P [GX-95-2]
L101	EO-392605J	COIL FIX 1 RC875 561J
L102	EO-392605J	COIL FIX 1 RC875 561J
L201	EO-372996	COIL FIX 1 RC875 223J
L301	EO-372996	COIL FIX 1 RC875 223J
L381	EO-400782J	COIL FIX 1 EL0606RA T05 222J
L451	EO-400826J	COIL FIX 2 21D4A-682 682G
SW501	ES-396600J	SW PUSH SPUY52 5THROW [DOLBY NR]
SW502	ES-396601J	SW PUSH SPUY19 2-06-02N [CO/DAT DIRECT]
TR101	ET-354897	TR FET 2SK170 BL.GRV
TR331	ET-389251J	TR 2SC1740S S F05
TR332	ET-389251J	TR 2SC1740S S F05
TR401	ET-378524J	TR 2SC3383 S.T.U
TR402	ET-378524J	TR 2SC3383 S.T.U
TR403	ET-378524J	TR 2SC3383 S.T.U
TR451	ET-378524J	TR 2SC3383 S.T.U
TR452	ET-378524J	TR 2SC3383 S.T.U
TR453	ET-378524J	TR 2SC3383 S.T.U
TR501	ET-378524J	TR 2SC3383 S.T.U
TR502	ET-389803J	TR 2SA933S R.S
TR551	ET-396488J	TR DTC144EL T05
TR552	ET-396488J	TR DTC144EL T05
TR553	ET-397403J	TR 2SA1561 R.S T05
TR554	ET-378524J	TR 2SC3383 S.T.U
TR601	ET-354414	TR DTC144ES
TR651	ET-378524J	TR 2SC3383 S.T.U
TR801	ET-349979	TR 2SD794 P,Q,R
TR802	ET-353067	TR 2SB744 P,Q,R
TR811	ET-349979	TR 2SD794 P,Q,R
TR812	ET-353067	TR 2SB744 P,Q,R
VR101	EV-618107	R S-FIX H RH1021C 0.50W471
VR102	EV-390869J1	R S-FIX H T05 RH0638C 0.1W 103
VR401	EV-389927J	VR RK16312A0 SPL C1253X2 [CALIBRATION LEVEL]
VR402	EV-391833J1	R S-FIX H T05 RH0638C 0.1W 104
VR501	EV-396613J	VR ROTARY RK1612220 A503X2 [REC LEVEL]
VR651	EV-391833J1	R S-FIX H T05 RH0638C 0.1W 104
VR652	EV-390869J1	R S-FIX H T05 RH0638C 0.1W 103
VR653	EV-396335J	R S-FIX H T05 RH0638C 0.1W 474
VR721	EV-400657J	VR ROTARY RK1631110 B202 [CALIBRATION BIAS]
VR901	EV-373388	VR ROTARY RK16312A0 A104X2 [HEADPHONE LEVEL]

PARTS LIST

FINAL ASSEMBLY BLOCK



PARTS LIST

13. FINAL ASSEMBLY

Ref.No.	Part No.	Description
6	BB-T2047A020K	MECHA BLK GX-Z7100EV
8A	SP-396307J1	PANEL REAR GX-75-2B(E)
8B	SP-396305J1	PANEL REAR GX-95-2B(E)
8C	SP-396306J1	PANEL REAR GX-95-2B(B)
9	ZS-376523	ST BID30X06STL BNI EARTH LOCK
10	ZS-350934	PT BR30X08STL BNI
11A	*EW-336923	AC CORD 2C KP-419C.LTCE-2F EV [E]
11B	*EW-346249	AC CORD 2 CORES LCFL2X0.75 B [B]
12	*EZ-631945	STRAIN RELIEF SP-4N-4
15A	*BT-396316J	TRANS POW T2129(E) [E]
15B	*BT-396317J	TRANS POW T2129(B) [B]
16	ZS-301576	ST PAN40X10STL CMT
20	SK-358066B	KNOB SLIDE-BLACK
21	MZ-385721J2	PLATE DAMP
22	SZ-392824J	SHEET DAMP NEW
23	SE-395611J	PLATE STAB1
24	ZS-387752J	6RB26X030SCM BZN
25A	BD-T2107A050L	PANEL FRONT BLK GX-75-2B
25B	BD-T2107A050K	PANEL FRONT BLK GX-95-2B
27	SE-382435J	WINDOW METER
28	SE-384090J	FILTER FLD
29	SK-384075J	KNOB OPERATE B
33	SK-384079J1	KNOB B
34	SM-365756C	NAME PLATE AKAI(2)
36	SK-384077J	KNOB PUSH B
37	SE-384091J	MASK VR
38	ZS-358936	ST BID30X06STL CMT
39A	SP-384060J	CHASSIS BOTTOM [GX-75-2]
39B	SP-384386J1	CHASSIS BOTTOM(2) [GX-95-2]
40	ZS-305827	ST BID30X06STL BNI
41A	SA-384105J	FOOT ROUND SHAPED(N) [GX-75-2]
41B	SA-384387J	FOOT ROUND SHAPED(N)(2) [GX-95-2]
42	ZS-389961J	BT BID30X14STL COP CLEAR CUP
44A	BD-T2124A060C	LID PANEL BLK GX-Z7100EV-B [GX-75-2]
44B	BD-T2124A060E	LID PANEL BLK GX-95-2B [GX-95-2]
45	SK-373236B	KNOB POWER-B
46	MZ-384059J	JOINT POW
47	SK-373337C	KNOB OPERATION(B) REW-BLACK
48	SK-373336C	KNOB OPERATION(A) PLAY-BLACK
49	SK-373337A	KNOB OPERATION(B) FF-BLACK
50	SK-373337E	KNOB OPERATION(B) PAUSE-BLACK
51	SK-373336A	KNOB OPERATION(A) STOP-BLACK
52	SK-373337G	KNOB OPERATION(B) MUTE B
53	SK-384088J	KNOB RECIL-B PART
54	SK-384088J	KNOB RECIL-B PART
55	SK-381051J	KNOB VR-B(2) PART
57	SP-384100J1	COVER UPPER B
58	ZS-341960	ST BID40X06STL BNI [GX-75-2]
59	ZS-376523	ST BID30X06STL BNI EARTH LOCK
60	ZS-381482J	SCREW TOP COVER(3) B OM
61	SP-384102J	SIDEBOARD(L) [GX-95-2]
62	SP-384101J	SIDEBOARD(R) [GX-95-2]
63	ZW-376292	WASHER SIDE BOARD [GX-95-2]
64	ZS-376293	SCREW SIDE BOARD [GX-95-2]

NOTE:
Parts will not be supplied if they are not listed in the parts list, even if they appear on the assembling illustrations with reference No.

14. ACCESSORY

Ref.No.	Part No.	Description
1	EW-383168J	CORD TC-C-05S P-P 2P 2PCS
2	AX-384837J	REMOCON RC-G95

15. REMOTE CONTROL RC-G95

Ref.No.	Part No.	Description
1	SC-726112J	CASE BATTERY GX-Z9100R