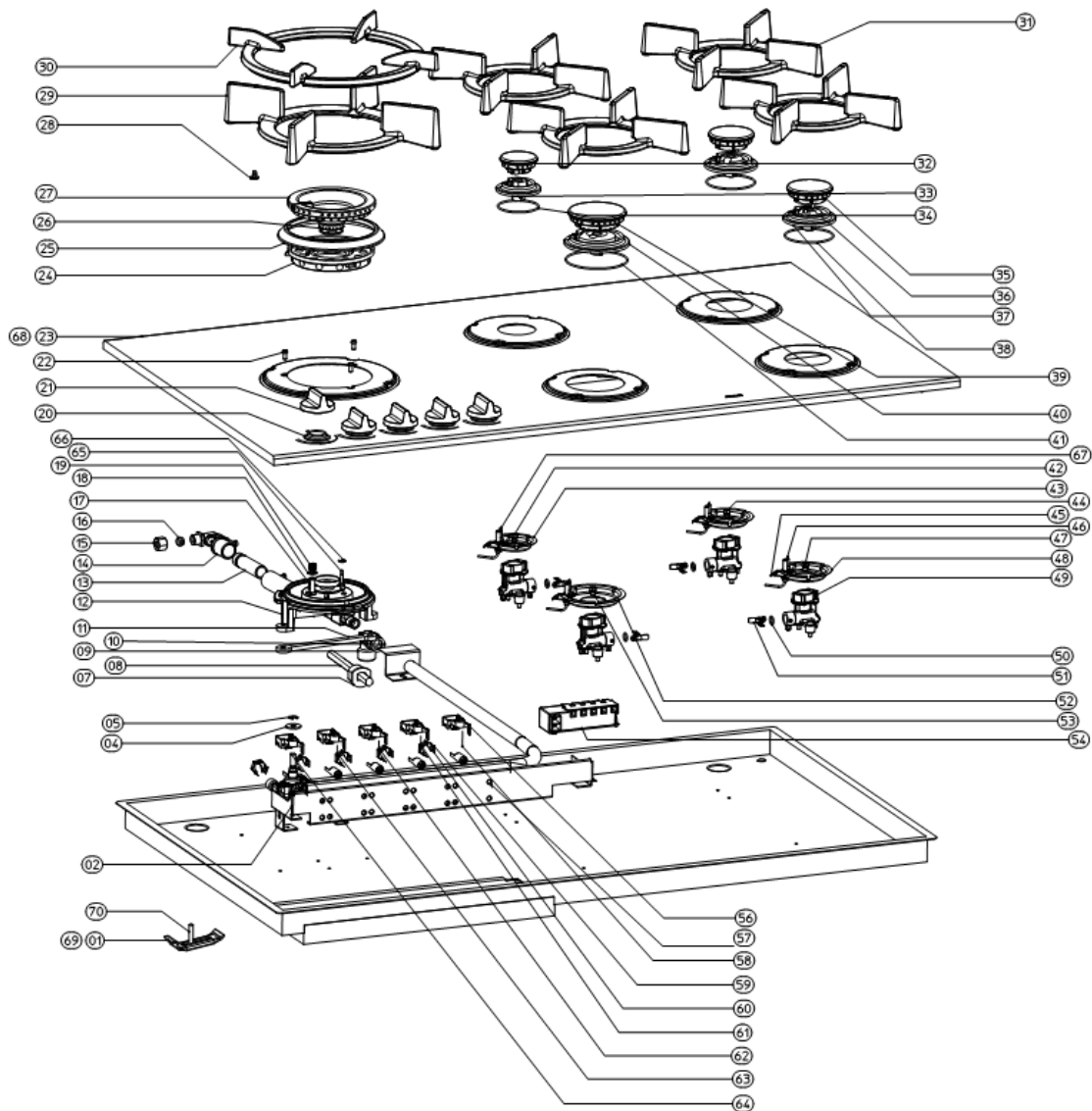


Producent: ATAG
Numer oryginalny: HG9711MBA1E/A1
Nazwa zwyczajowa:
Numer wewnętrzny: 272595

Sekcja: 12187



Producent: ATAG

Numer oryginalny: HG9711MBA1E/A1

Nazwa zwyczajowa:

Numer wewnętrzny: 272595

Nr pos	Nr oryg	Nazwa
0001	272879	INSTALLATION MATERIAL
0002	272759	SUPPORT 396,5X62
0004	317969	WASHER
0005	263702	WASHER RETAINING 5MM DIN6799 5
0007	263701	CABLE DISCHARGER 1857
0008	272650	CABLE WITH PLUG H05V2V2-F 3G0,75 14003G0
0009	263703	KNEE 1/2 OUT(STR)-OUT(CON) 900 G1/2XR1/2
0010	263694	SEALINGRING GASPIPE 1/2 D18XD12X2
0011	272697	SLEEVE 5,3X10X6
0012	263947	BURNER D-WOK ASSY
0013	263603	MIXING BUSH B+C+D
0014	263614	NOZZLE SUPPORT D-180 KPL
0016	263607	DOUBLE CONE RING D8
0017	272619	SPARKING PLUG L900 WOK
0019	263618	SPIRAL SPRING
0020	345579	KNOB GASKET ATAG
0021	263939	CONTROLKNOB MAGNA 41MM
0023	339301	COOKTOP HG9711M ČR-C MEKOM
0024	263683	BURNER HEAD OUTSIDE BRASS HOLE D
0025	263948	RING WOK D113,5/D105,5
0026	263930	BURNER CAP D
0027	263938	BURNER CAP WOK BU
0029	263933	PANSUPPORT CAST IRON WOK
0030	263946	RING CAST IR WOK
0031	272699	PANSUPPORT BL CAST IR.
0032	405667	BURNER CROWN SU ASSY
0033	278281	BURNERCUP A SI+SPARK+TH.COATED SU MV MT
0034	272645	GASKET O-RING BURNERC.A1 47,35 47,35X1,7
0035	405668	BURNER CROWN NO V0 KPL
0037	272722	BURNERCUP A NO+SPARK+TH.COATED NO MV MT
0038	272646	GASKET O-RING BURNERC.A2 56,87 56,87X1,7
0039	278279	BURNERHEAD+COV. RA COMPL ST KPL
0040	278239	BURNERCUP A RA+SPARK+TH COATED ST MV MT
0041	272647	GASKET O-RING BURNERC.72,75X1,78
0042	272729	INJECTOR B075 B075
0043	272801	SPARK-PLUG SUPPORT A 9,2MM A 9,2
0044	272724	GASDUOSE B107
0045	310045	SPARK PLUG SPRING
0046	272823	SPARK-PLUG A + CABLE L450 A L450
0048	272802	SPARK-PLUG SUPPORT B 9,2MM B 9,2
0049	272714	BURNER VESSEL 5,3
0051	272709	CLAMPSRING BURNERPIPE
0052	272803	SPARK-PLUG SUPPORT C 9,2MM C 9,2
0053	272730	INJECTOR B132 B132
0054	272829	IGNITION TRANSFORMER 5P 230V 5P B100056-
0056	272831	LINKED SWITCH 5X TOP 5X MS930 0,1A/250V
0059	263577	GASKET O-RING 7.65X1.63 GASTAP 7,65X1,63
0060	263673	CLAMPSRING GASTAP
0061	317155	GAS TAP PROTECTED CAL22100 045 RU
0062	317154	GAS TAP PROTECTED CAL22100 036 RD
0063	317156	GAS TAP PROTECTED CAL22100 053 ZE
0064	263765	GAS TAP CAL CAL22110 090/040 RD
0065	263778	THERMOCOUPLE WOK L380
0066	263639	CIRCLIP 6X0,7

Producent: ATAG

Numer oryginalny: HG9711MBA1E/A1

Nazwa zwyczajowa	21201	THERMOELEMENT L600
Numer wewnętrzny	272828	GASKET PVC 10X3
0069	263563	CONSOLE
0071	263562	BURNER CROSS PAN SUPPORT