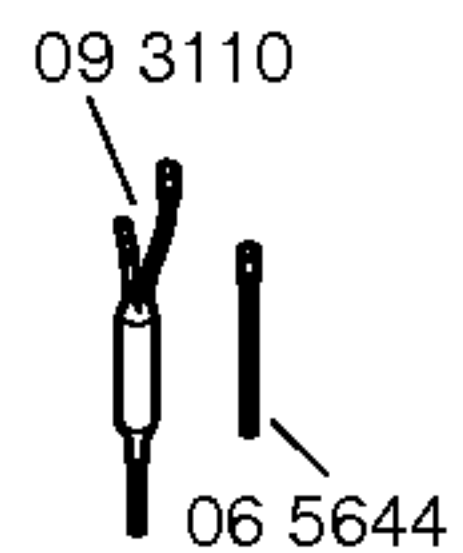
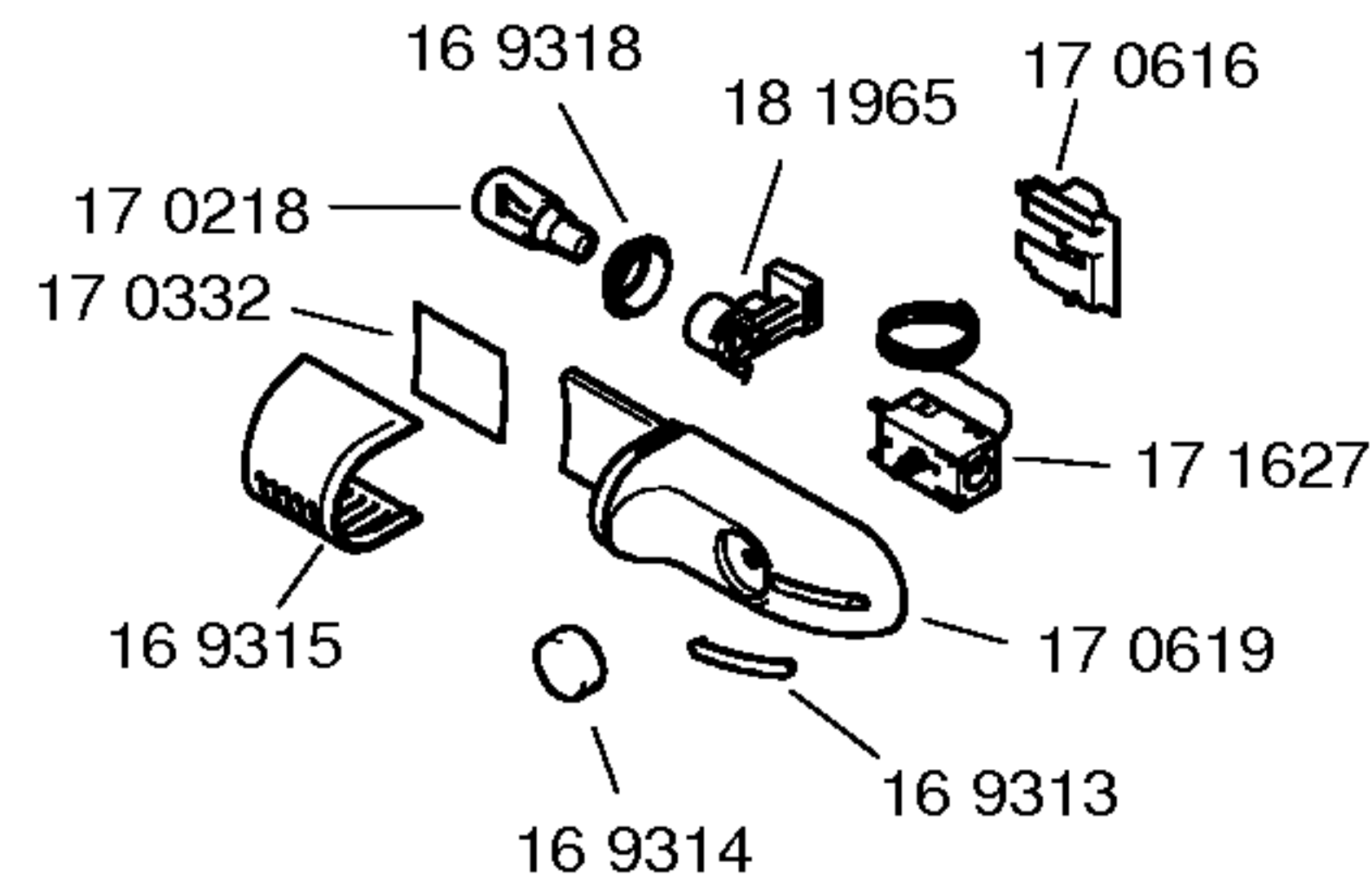
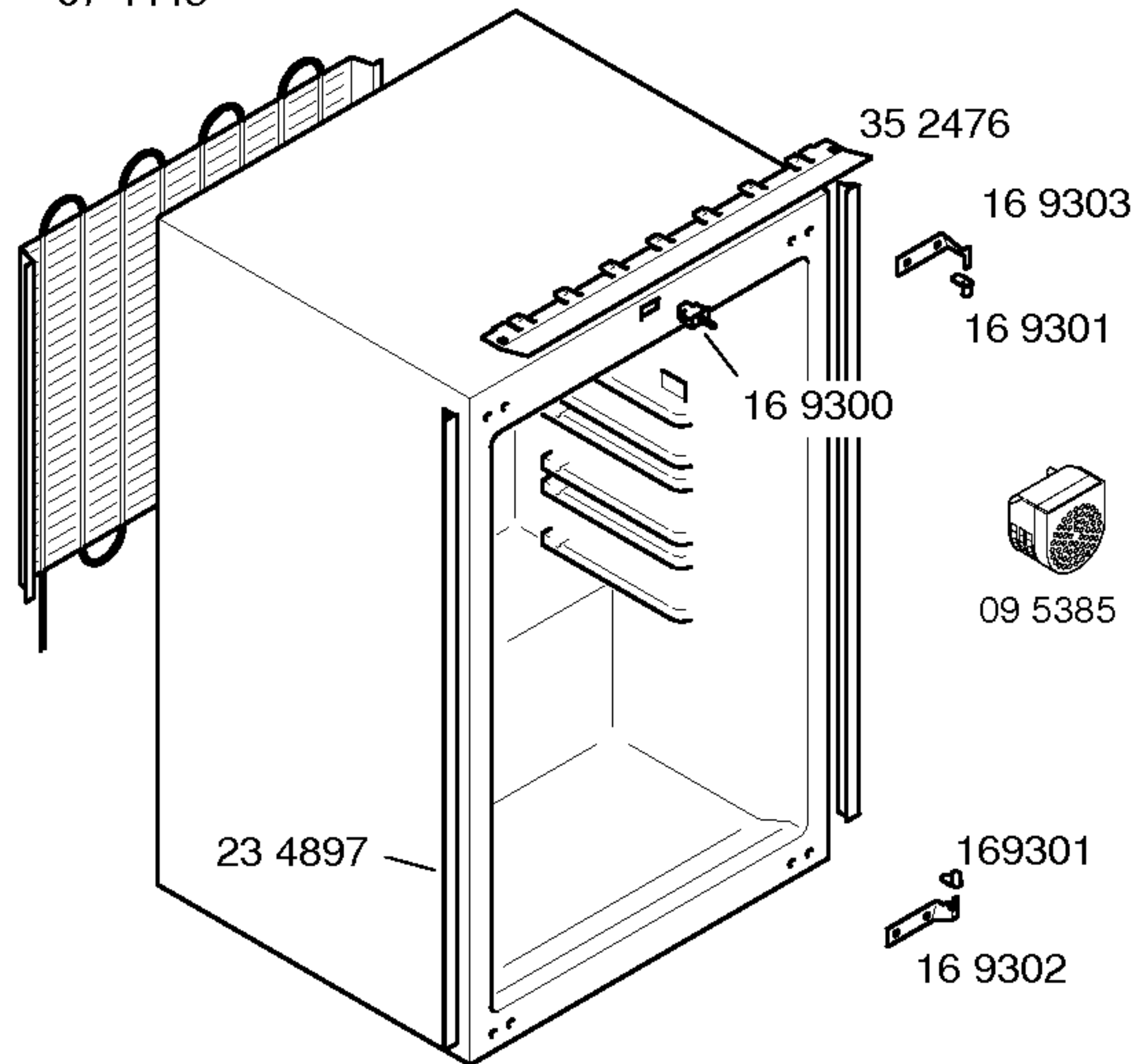




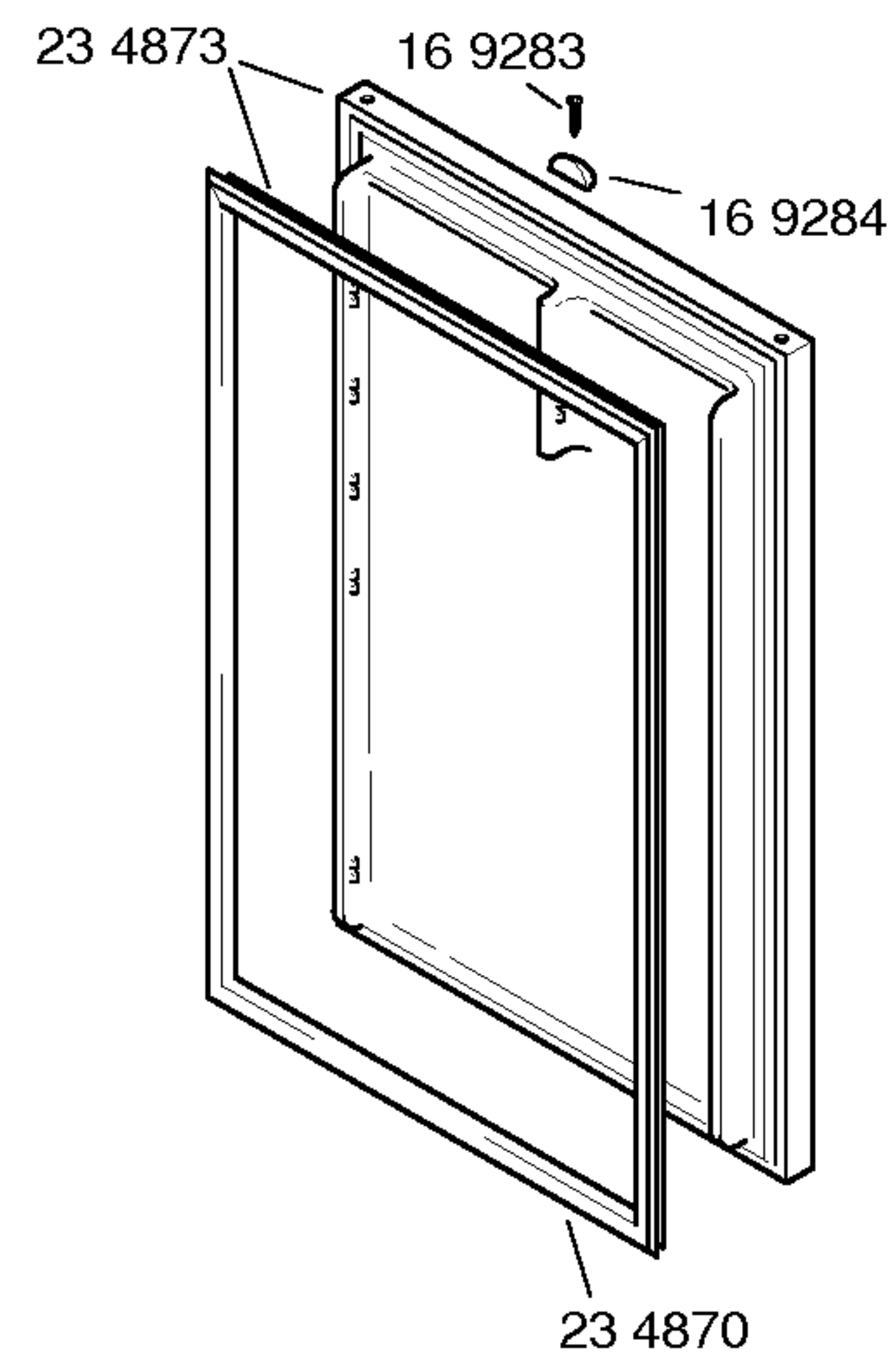
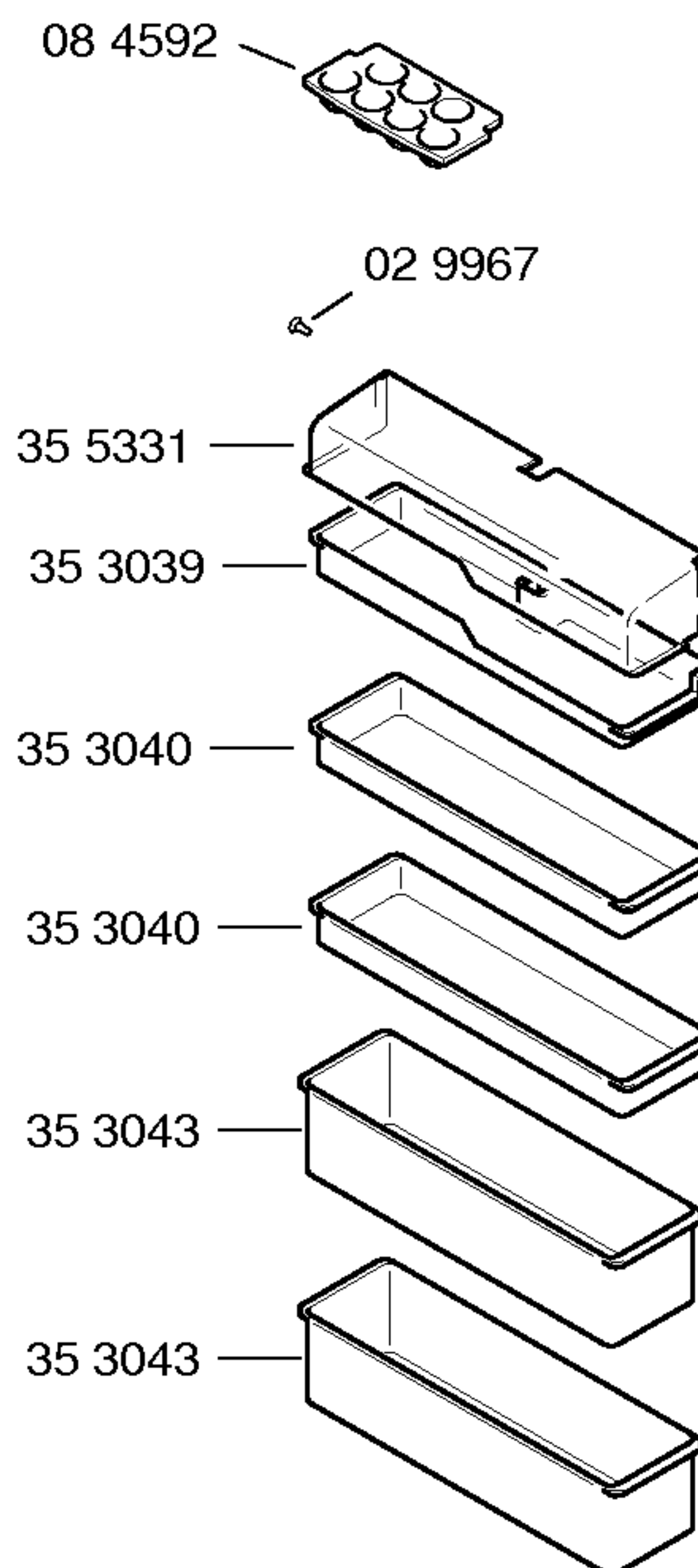
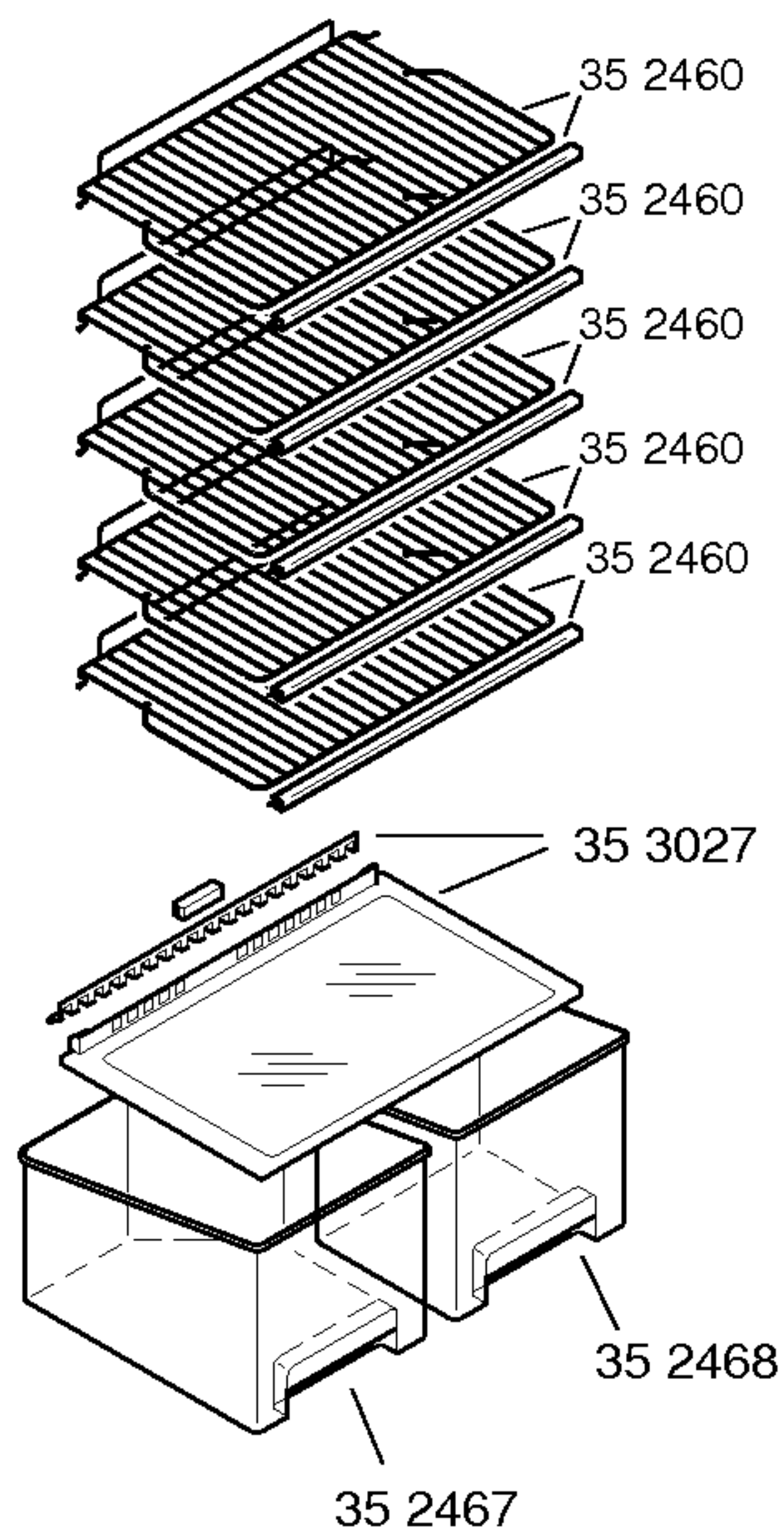
07 4445

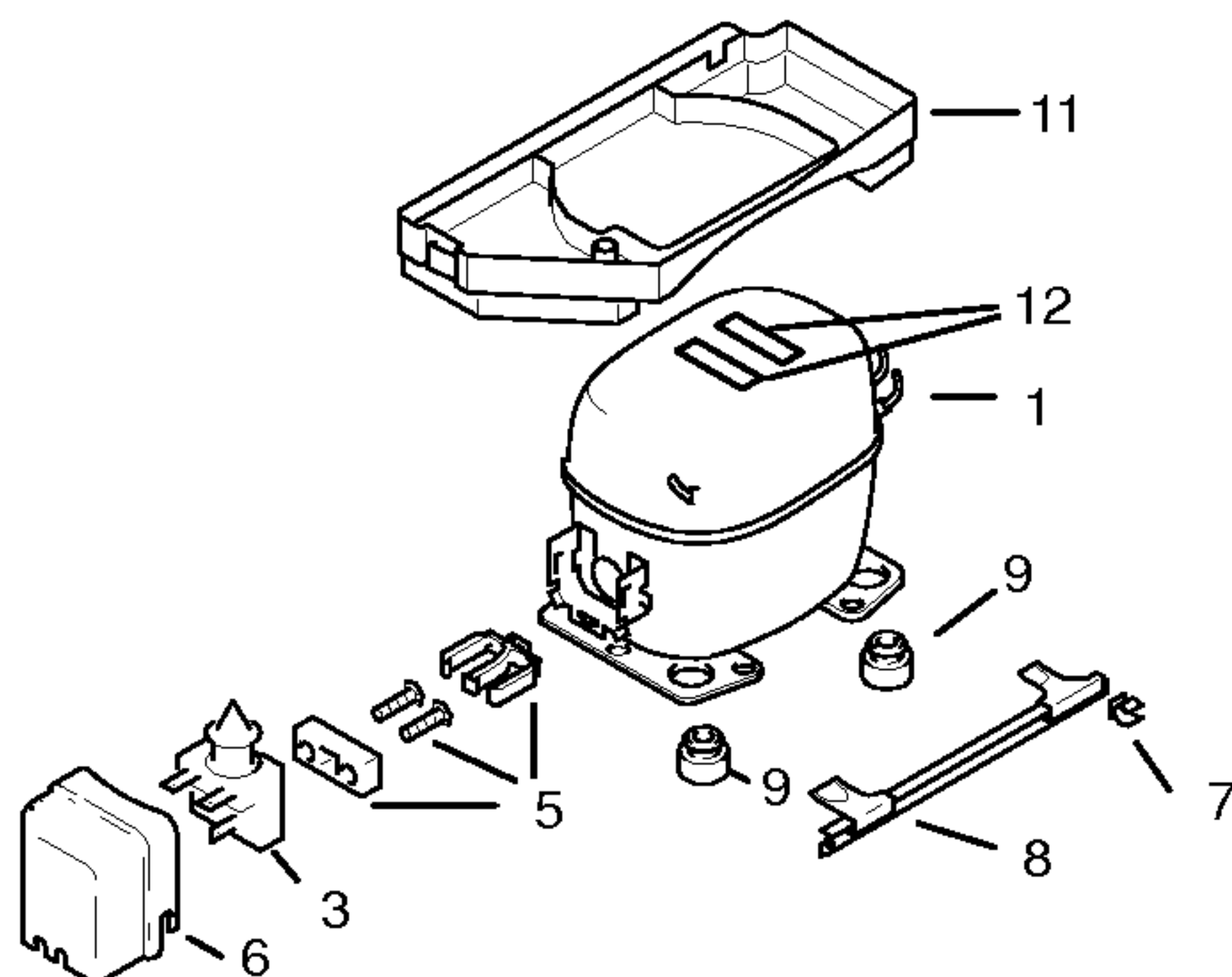


Gebrauchsanweisung
52 3550
(D,GB,F,I,NL)

Montageanleitung
52 1893
(D,GB,F,I,NL,DK,N,SF,
SE,TR)

Beistellsatz
26 4862





	V01,V02	V03	V04
Pos.	Danfoss TLES6K	Aspera BPK1046Y	Goldstar NDA62NAEM
1	14 1905	14 2099	14 2037
2			
3	15 1055	18 0752	17 0743
4			
5	15 0760	17 0882	17 0745
6	15 1072	17 0881	17 0744
7	16 9319	16 9319	16 9319
8	26 4879	26 4879	26 4879
9	050166	050166	050166
10			
11	26 4878	35 4549	35 4549
12	05 6008	05 6008	05 6008

TECHNISCHE DATEN / TECHNICAL DATA / DONNEES TECHNIQUES				
Verdichter/Compressor/Compresseur		Danfoss	Aspera	Goldstar
Typ/Type		TLES6K	BPK1046Y	NDA62NAEM
Förderleistung/Delivery/Débit		l/h	612	1120
Anlaufstrom/Starting current/Cour de démarrage		A	3,2	
Widerstand/Resistance/Résistance Ha/main/prin		Ω	60,9	34,6
Hi/aux		Ω	44,97	23,0
Temp.-Regler/Thermostat		Ranco		
Typ/Type		K59		
Regelstellung/Position		kalt	warm	
Schaltwerte/Switching values		+5,0	+5,0	
Valeurs de commutation		-25,0	-10,0	
Füllmenge/Fill.quantity/Charge		R600a	*	
Anschlußwert/Conn.load/Puiss. connectée		W	69	44
				66
Heizung/Heater/Chauffage				
Widerstand/Resistance/Résistance		Ω		
Leistung/Power/Puissance		W		
Ventilator/Blower/Ventilateur				
Widerstand/Resistance/Résistance		Ω		
Temp.-Regler/Thermostat				
Magnetventil/Magnetic valve/Electrovanne				
Widerstand/Resistance/Résistance		Ω		
Spannung/Voltage/Tension		V		

* siehe Typenschild