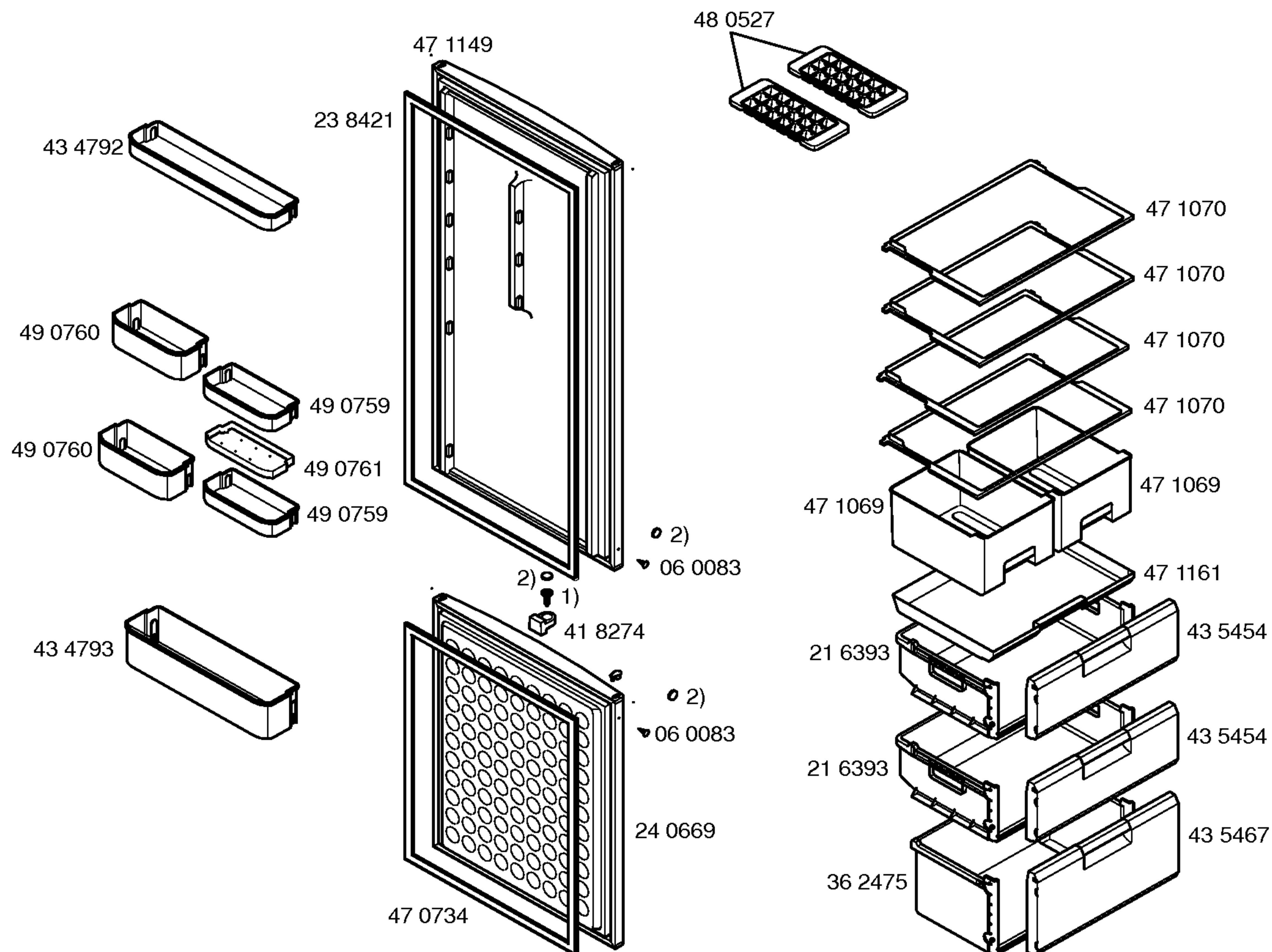
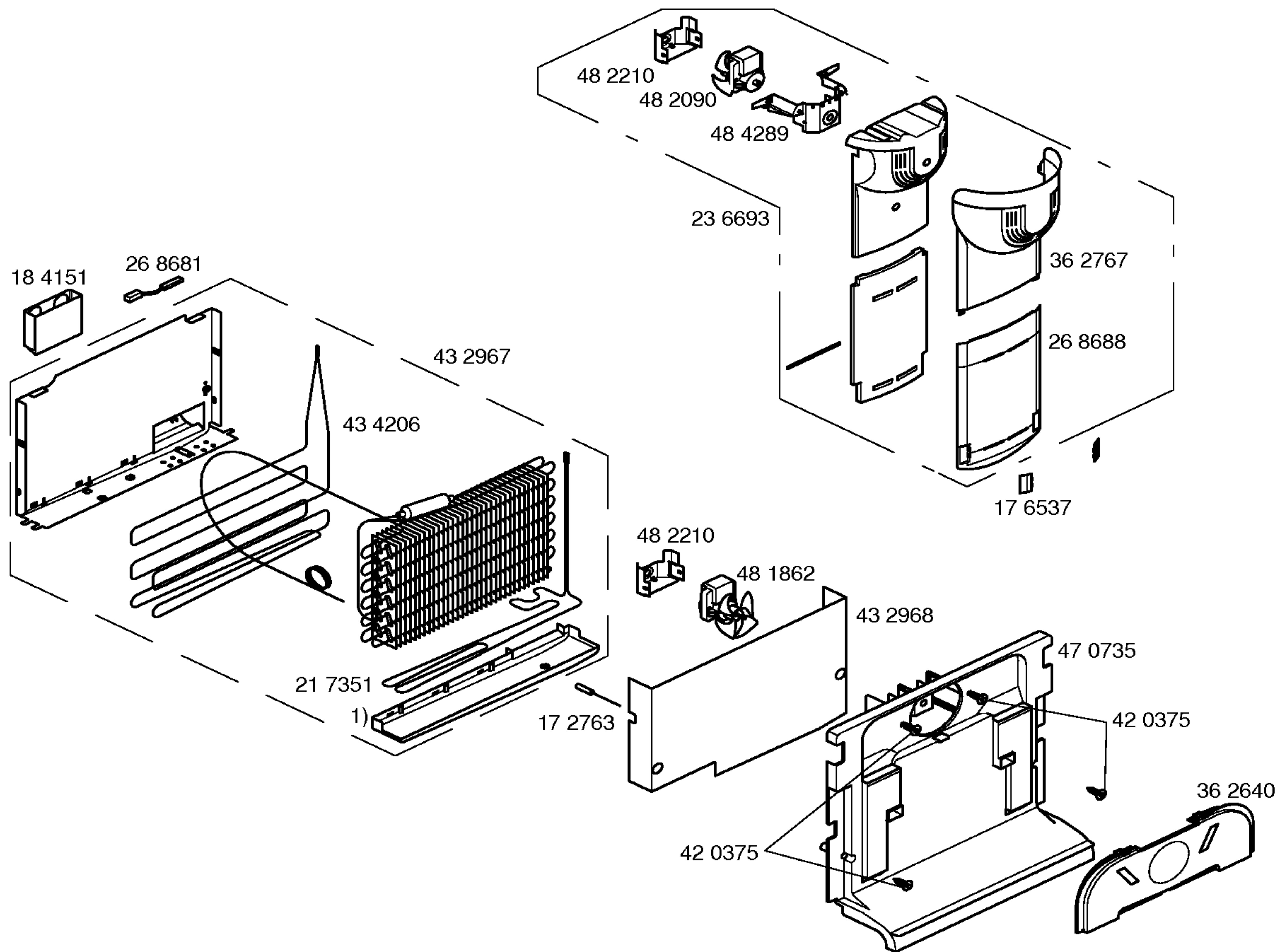


Gebrauchsanweisung  
58 7225  
(es,en,de,pt)

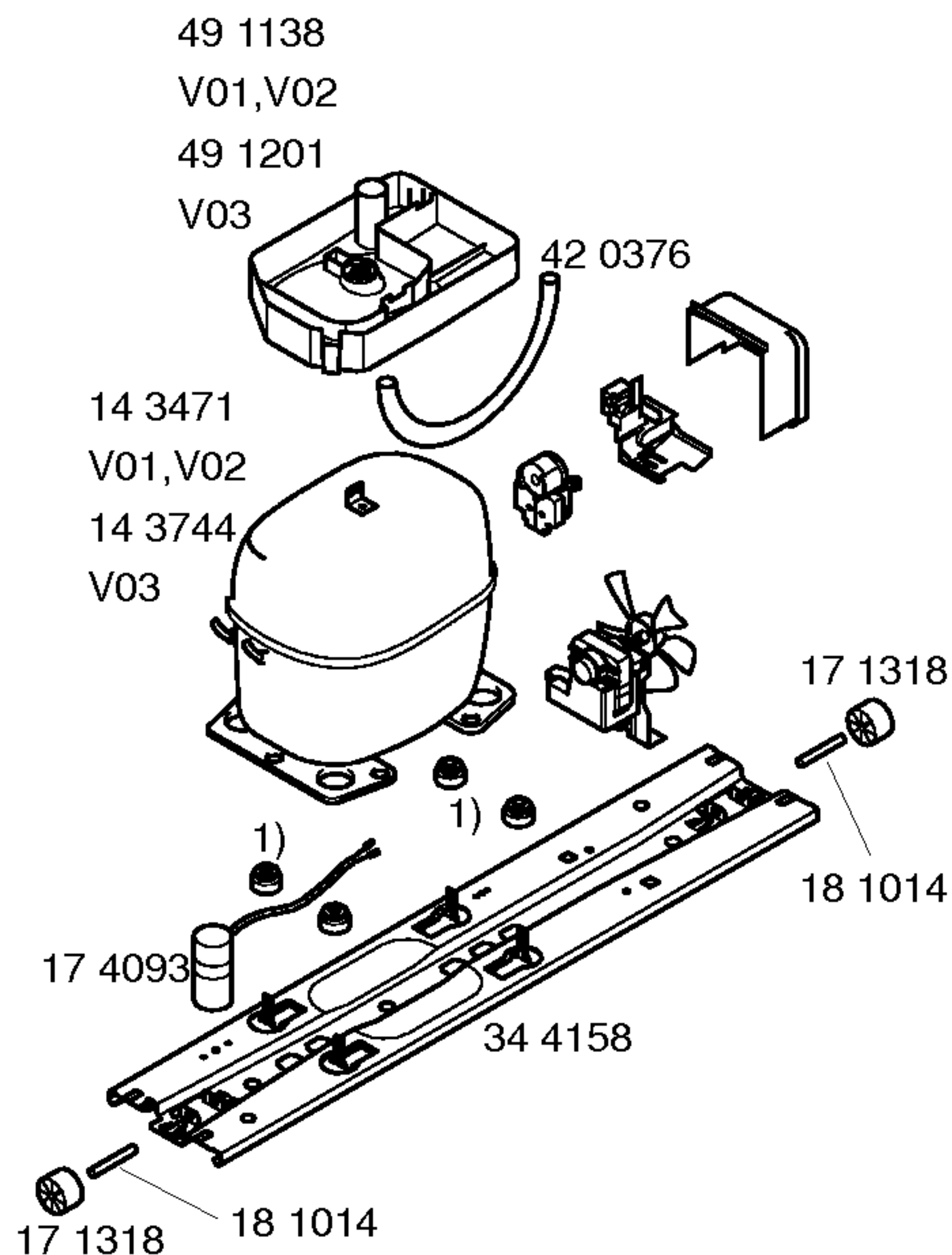
- 1) 17 2762
- 2) 17 2579
- 3) 18 9089  
V01  
42 1516  
V02,V03
- 4) 17 1303  
V01  
42 1602  
V02,V03



1) 17 2274  
2) 35 6211



1) 43 2966



TECHNISCHE DATEN/TECHNICAL DATA/DONNEES TECHNIQUES/DATOS TECNICOS			
Verdichter/Compressor/Compresseur/Compresor	ASPERA		
Typ/Type/Tipo	NBU 1118Y		
Förderleistung/Delivery/Debit/Aspiración l/h			
Anlaufstromm/Starting current/Cour.démarrage/Int.arranque A	–		
Widerstand/Resistance/Resistencia. Ha/main/prin. Ohm	13.6		
Hi/aux.	14.7		
Klappe Therm./Thermostat/Termostat			
Typ/Type/Tipo			
Reglerstellung/Position/Conexión	kalt warm		
Schaltwerte/Switching values/	..ein/conex.°C		
Valeurs de commutation/Desconex.	..aus"/descon.		
(..abtaven' od)	..alarm'		
Füllmenge/Fill. quantily/Charge/Carga R600	g	45	
Anschlusswert/Comm. load/Puiss. Connect./Potenc.	W	150	
Heizung/Heater/Chauflage/Resistenc.descong.	KΩ	Verdampfer	
Widerstand/Resistance/Resistencia	W	0.375	
Leistung/Power/Puissance/Potencia		145/230V	
Ventilator/Blower/Ventilateur/Ventilador	Verdichter	Verdampfer	
Widerstand/Resistance/Resistencia	KF 0.57	GF 0.47	

1) 06 0182