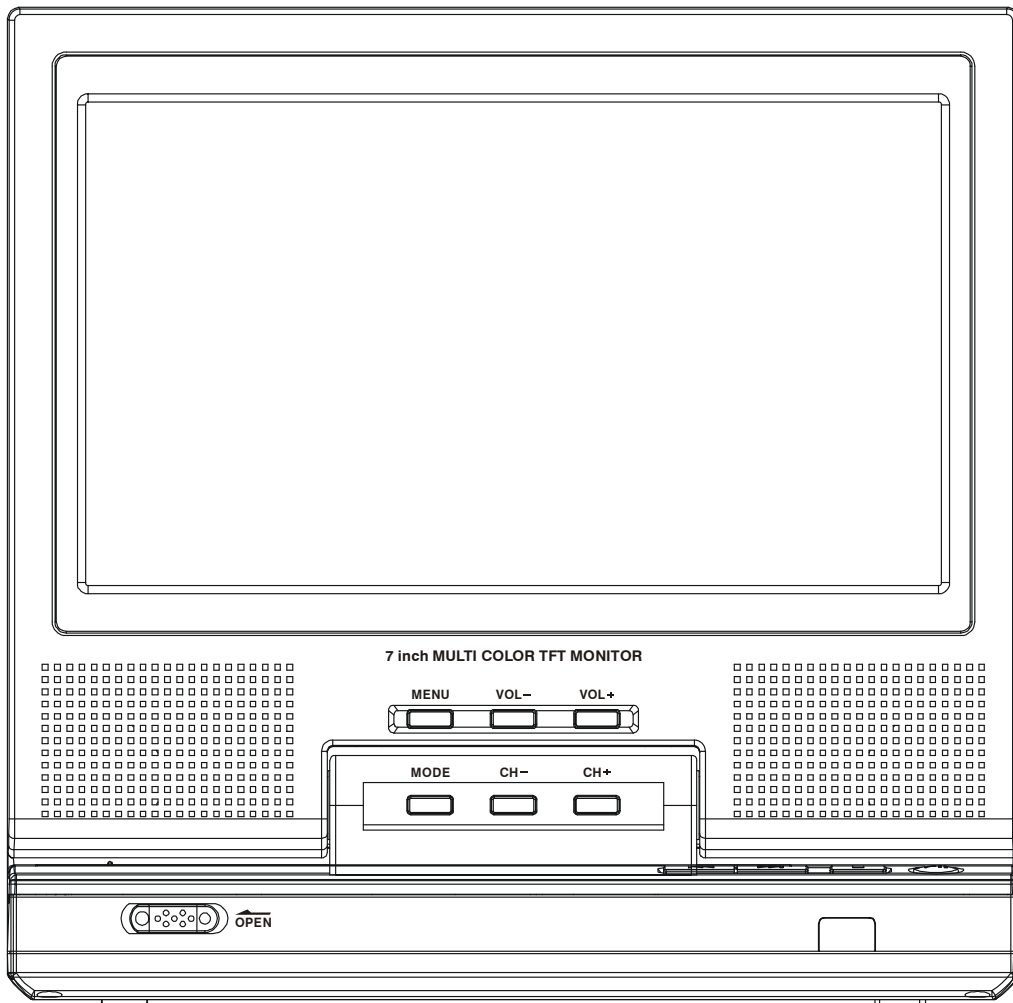


Belson® Service Manual

Mobile Video System



MODEL: (BS-13011)

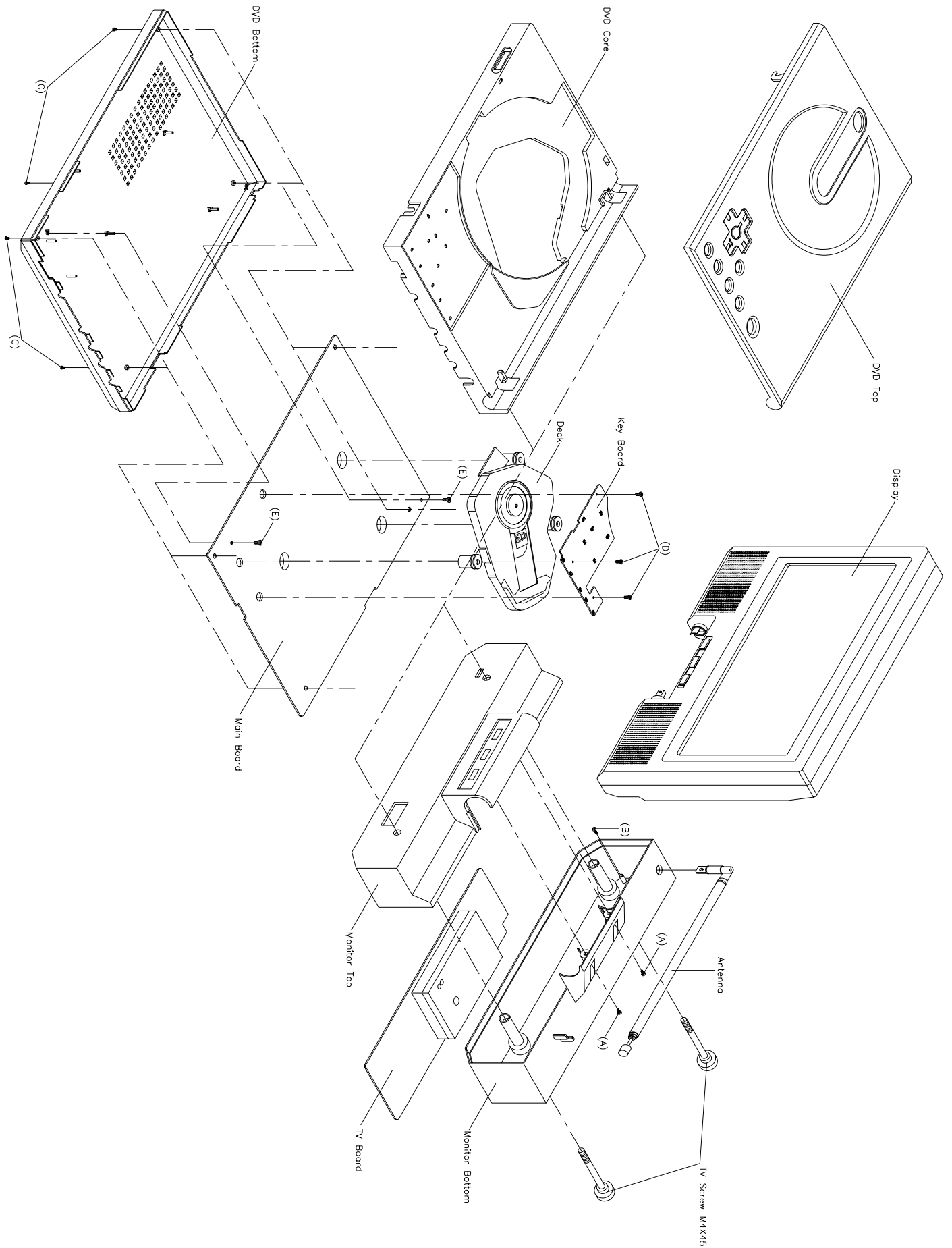
CONTENTS

	Page
Disassembly Instructions	3
Disassembly Diagram.....	4
Block Diagram	5
Printed Circuit Boards.....	6
Exploded Views Display	16
Exploded View Parts Lists Display	17
Exploded Views Unit.....	18
Exploded View Parts Lists Unit.....	19
Schematic Diagram	20
Electrical Parts List	28
Specifications.....	36

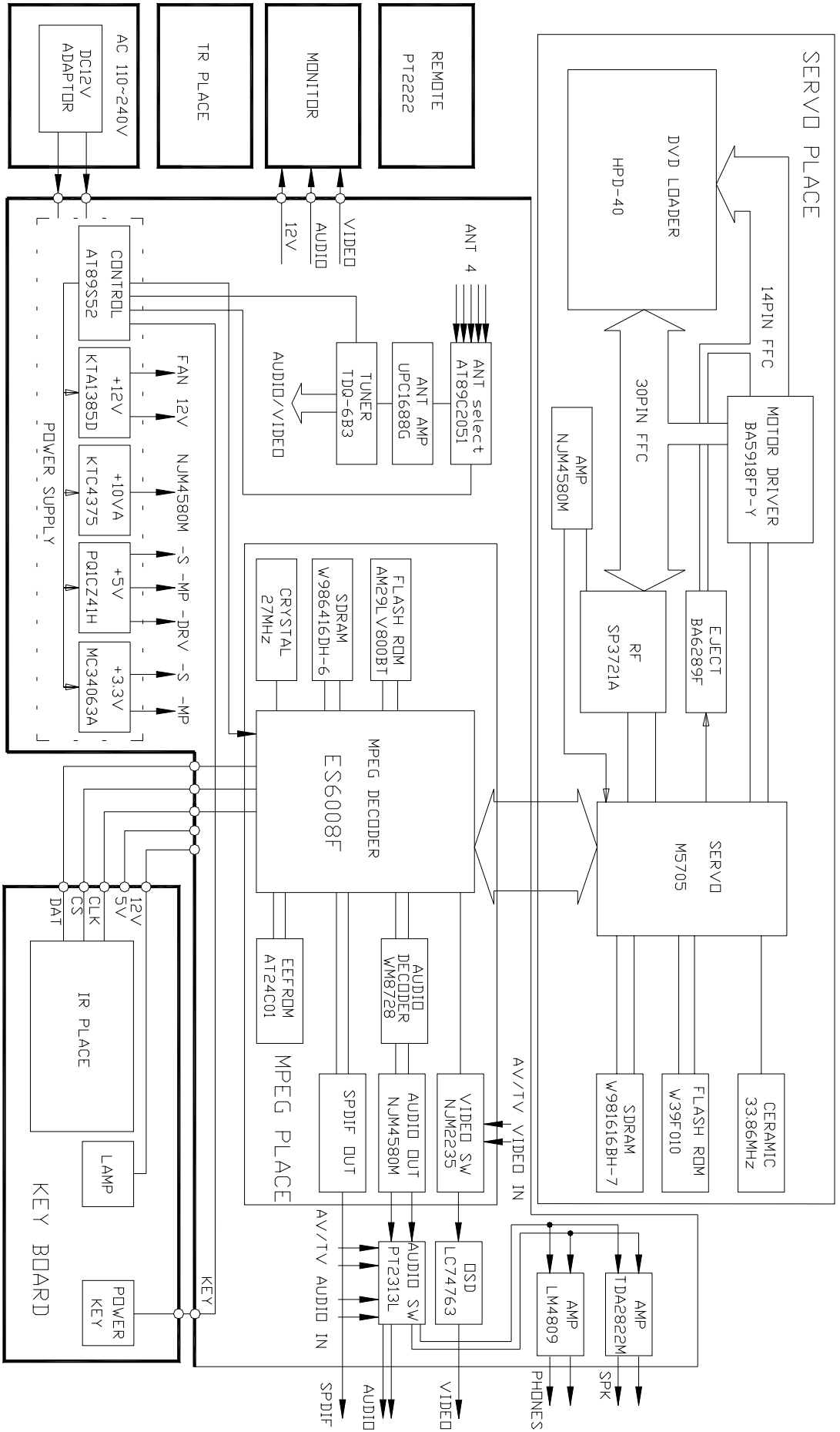
DISASSEMBLY INSTRUCTIONS

1. Using the unlock key that came with the unit or a similar tool, unlock the TV screw M4X45 and remove two screws (A) then remove the Monitor Top; The Monitor Bottom and take out the Display.
2. Remove the screw (B) from the monitor bottom then remove the Antenna.
3. Take out the DVD Top.
4. Remove four screws (C) from under DVD Bottom and take out the DVD Core.
5. Remove three screws (D) from on the DVD bottom then remove the Key Board and the Deck.
6. Remove two screws (E) from on the main board then remove the Main Board and the DVD Bottom.

DISASSEMBLY DIAGRAM

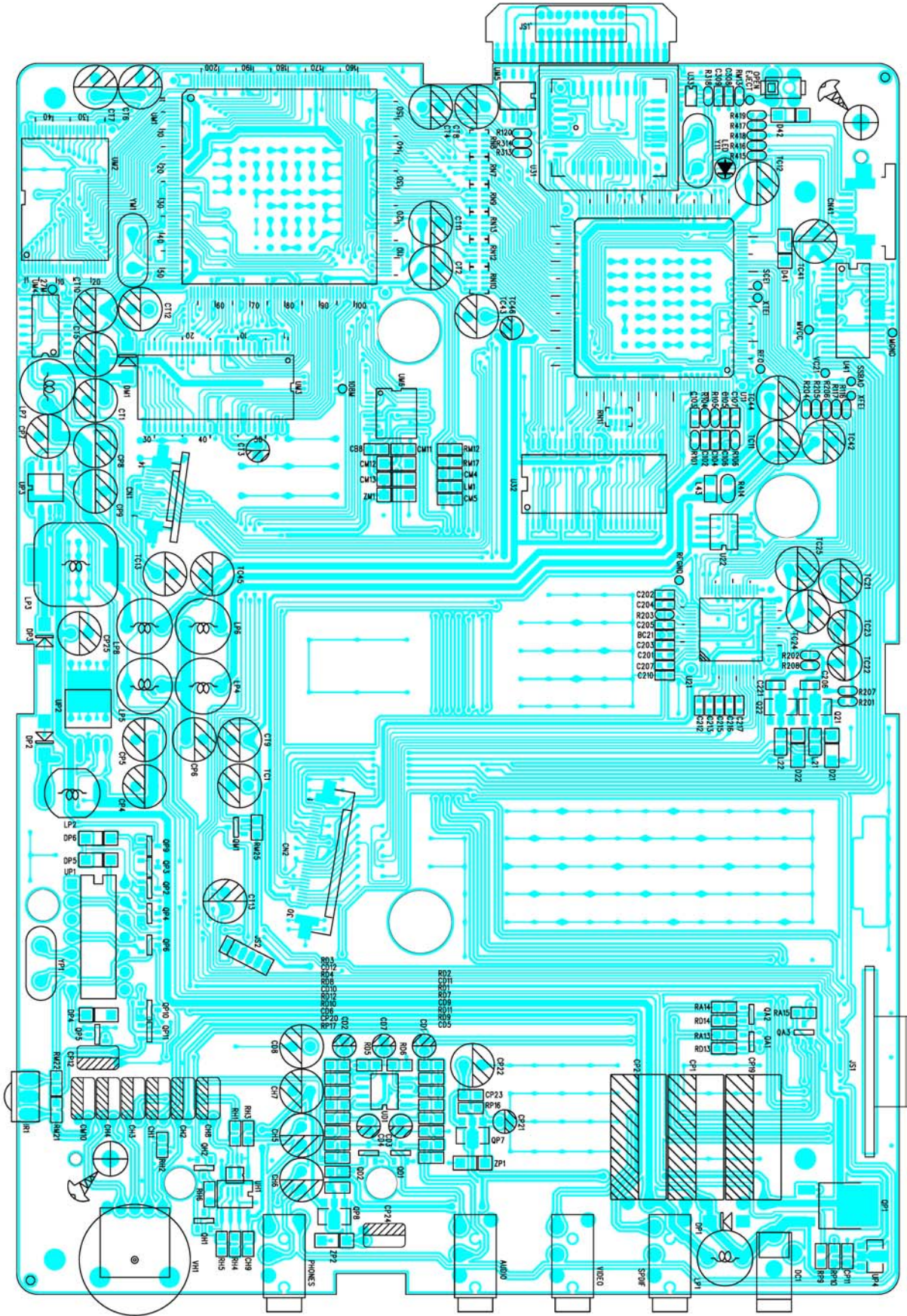


BLOCK DIAGRAM



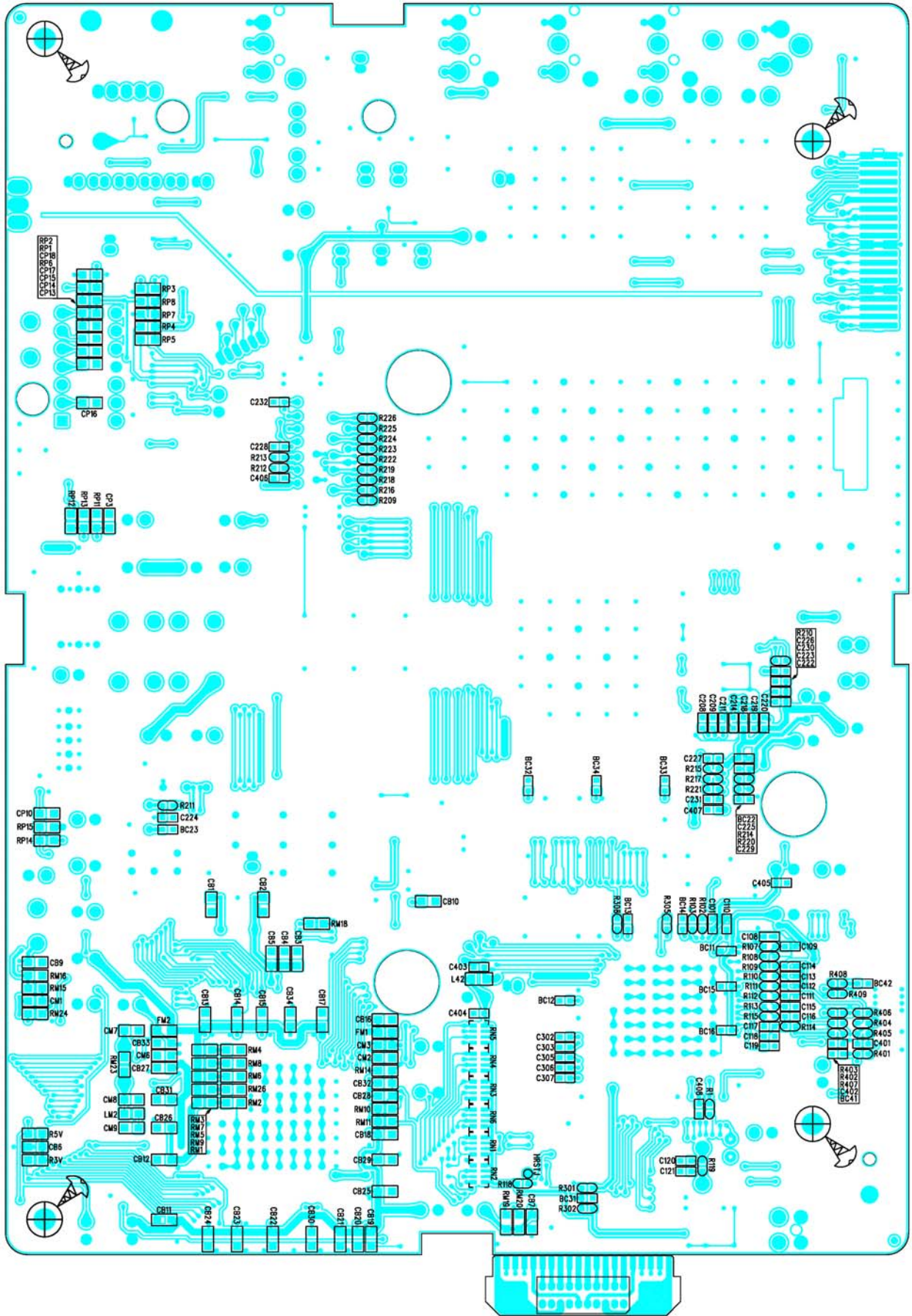
PRINTED CIRCUIT BOARDS

MAIN BOARD



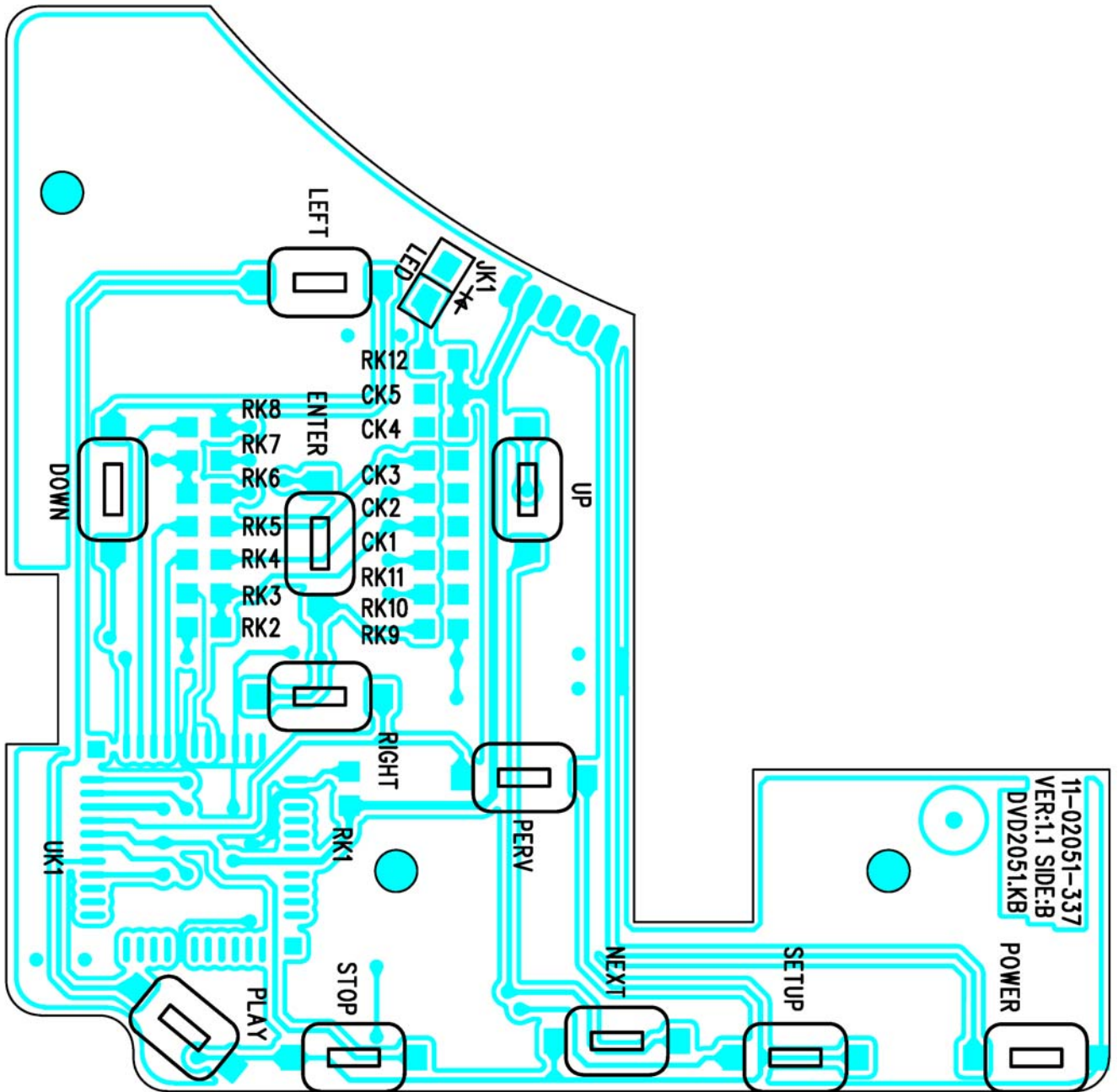
TOP VIEW

MAIN BOARD

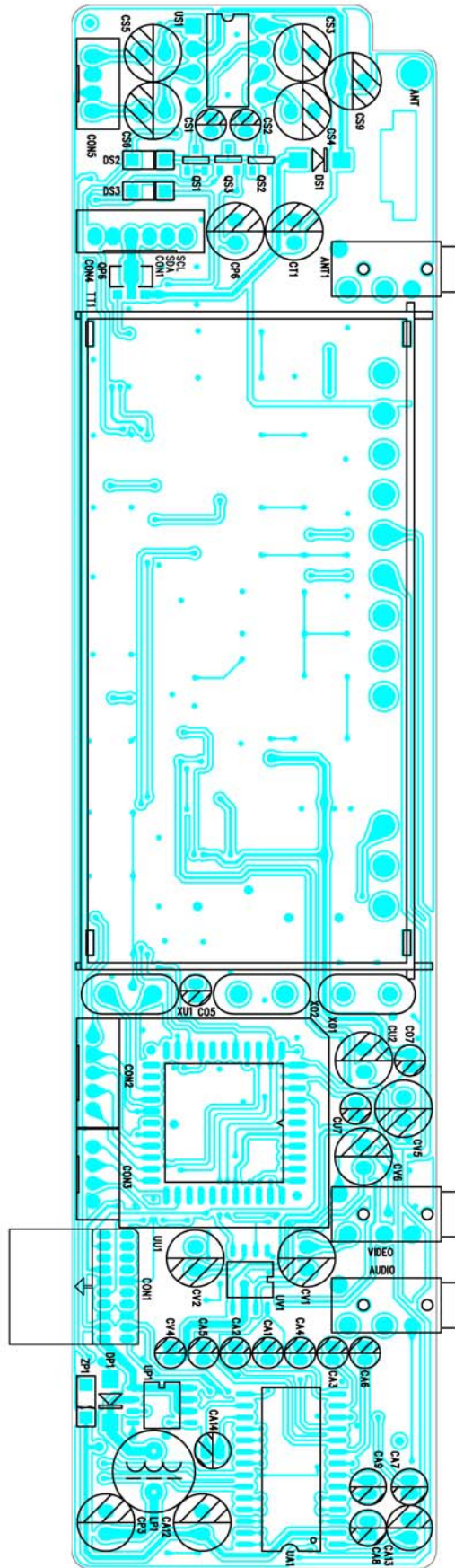


BOTTOM VIEW

KEY BOARD

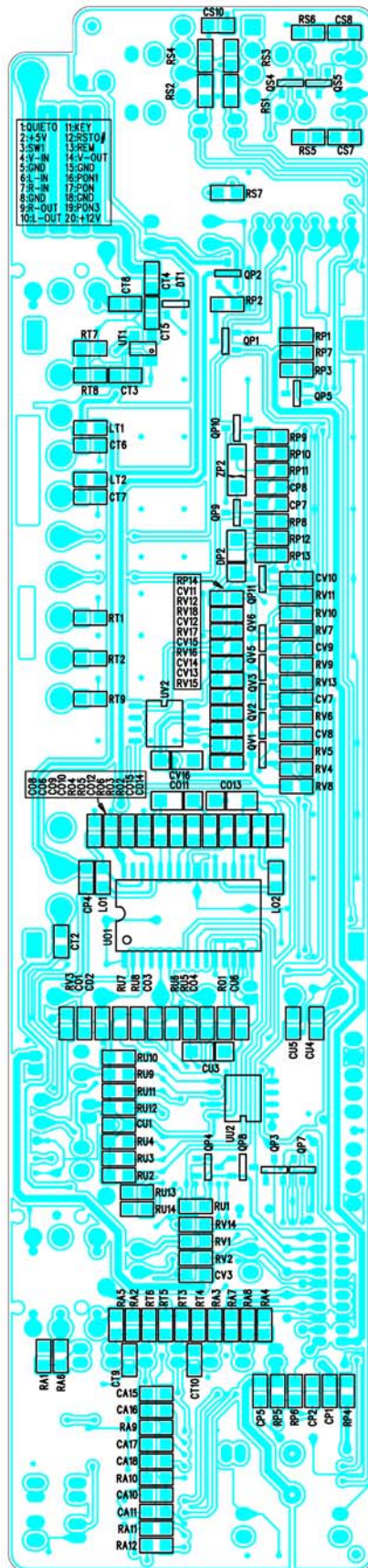


TV/PT/TB BOARD



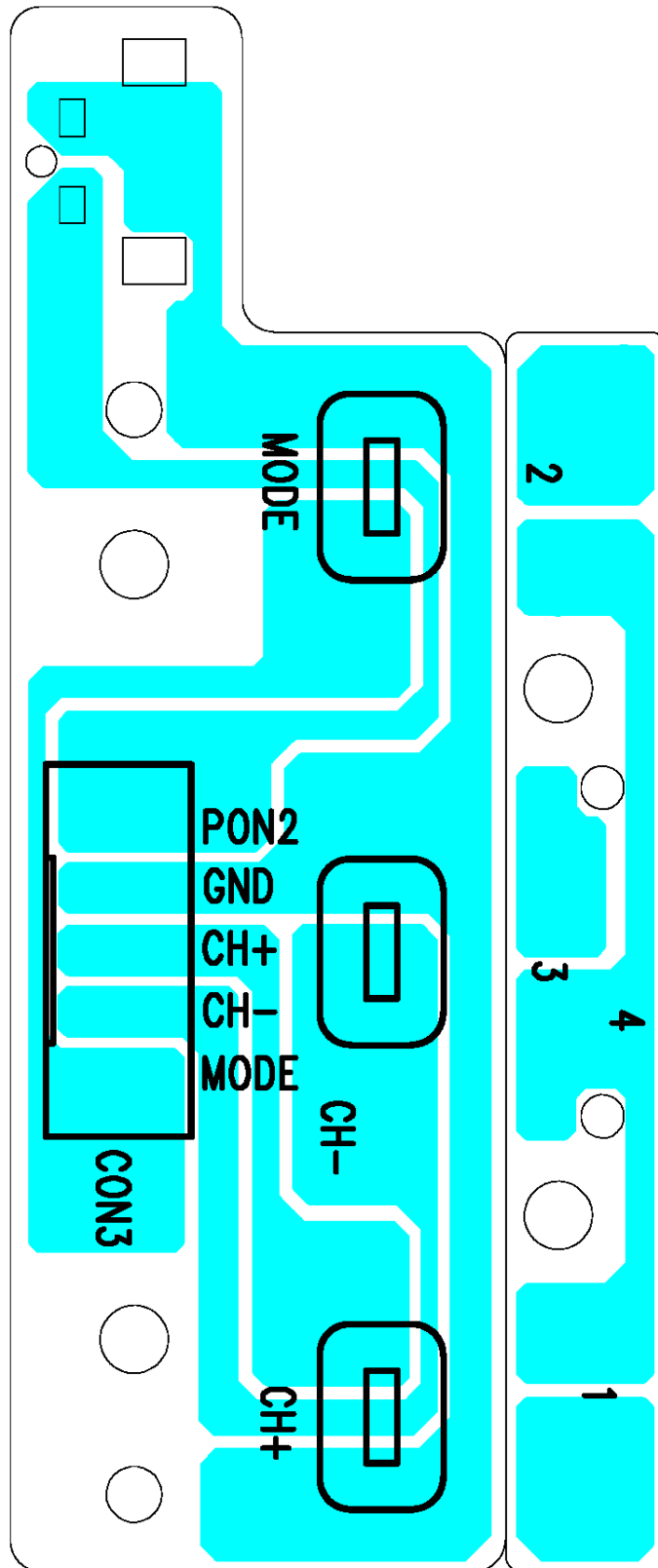
TOP VIEW

TV/PT/TB BOARD



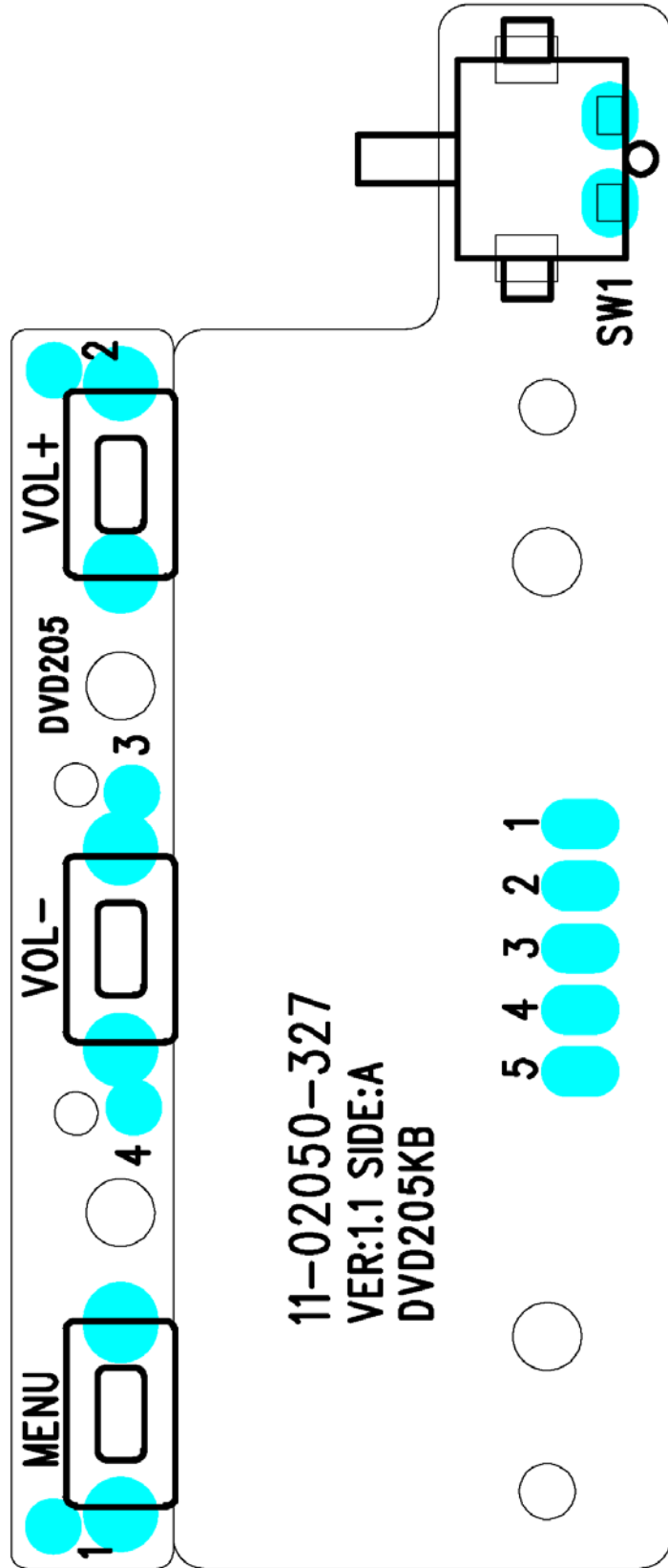
BOTTOM VIEW

JB/KB/LB BOARD



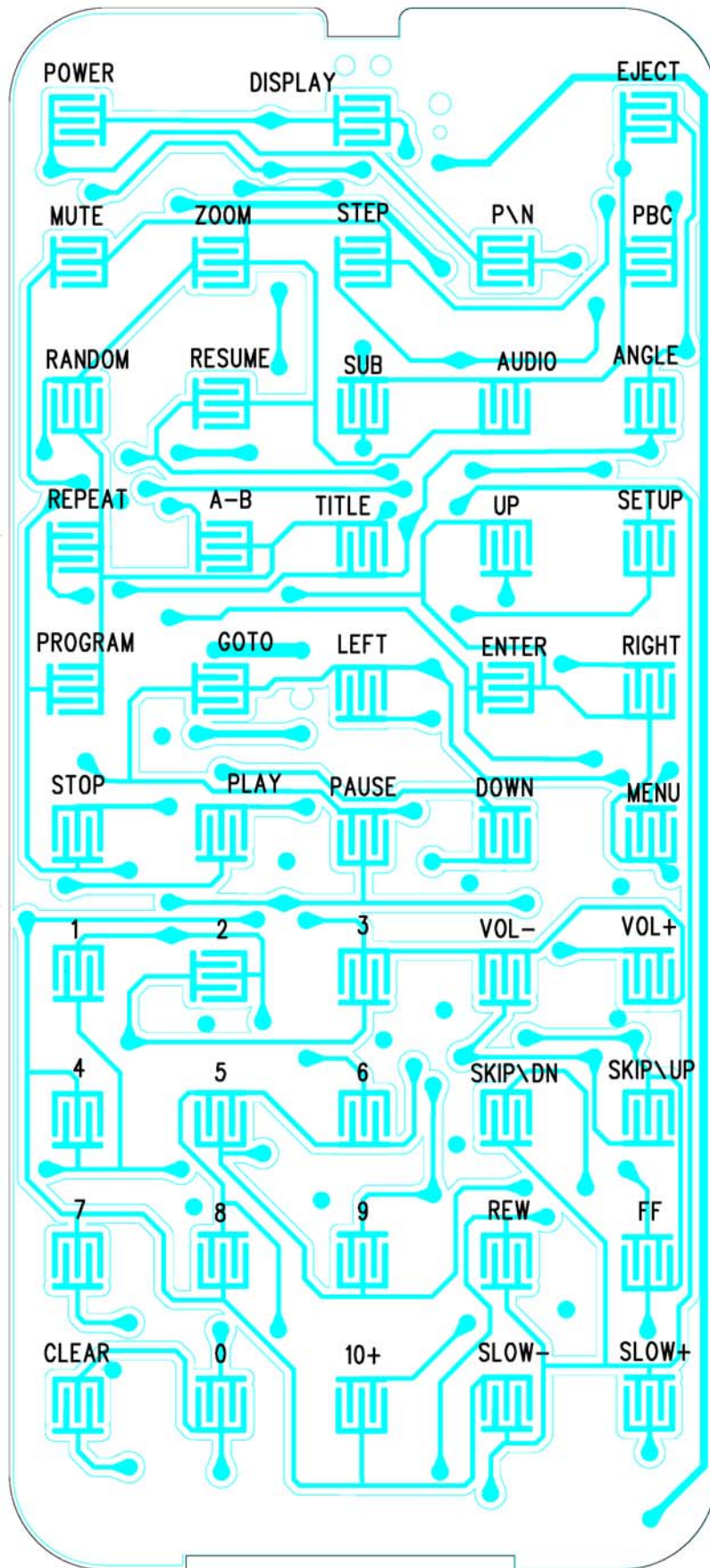
TOP VIEW

JB/KB/LB BOARD



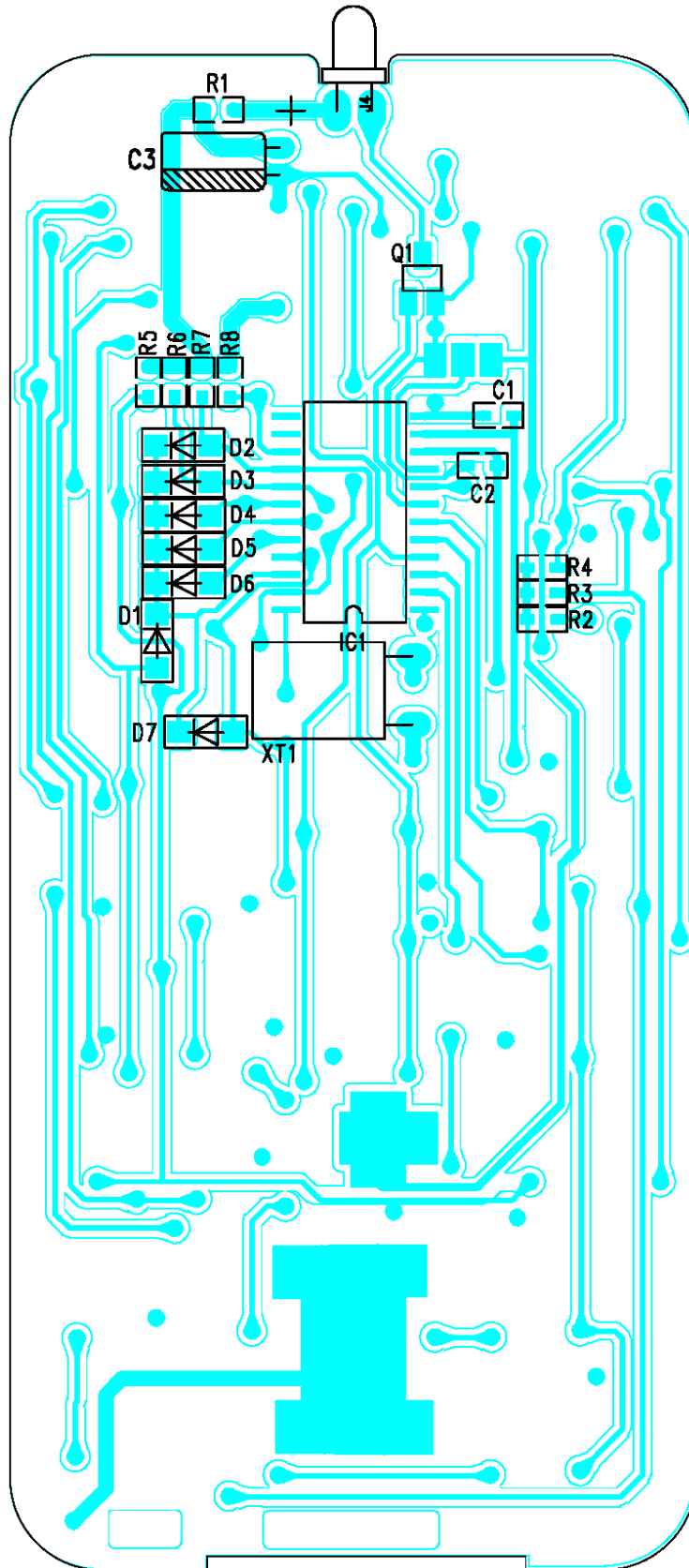
BOTTOM VIEW

REMOTE BOARD



TOP VIEW

REMOTE BOARD



BOTTOM VIEW