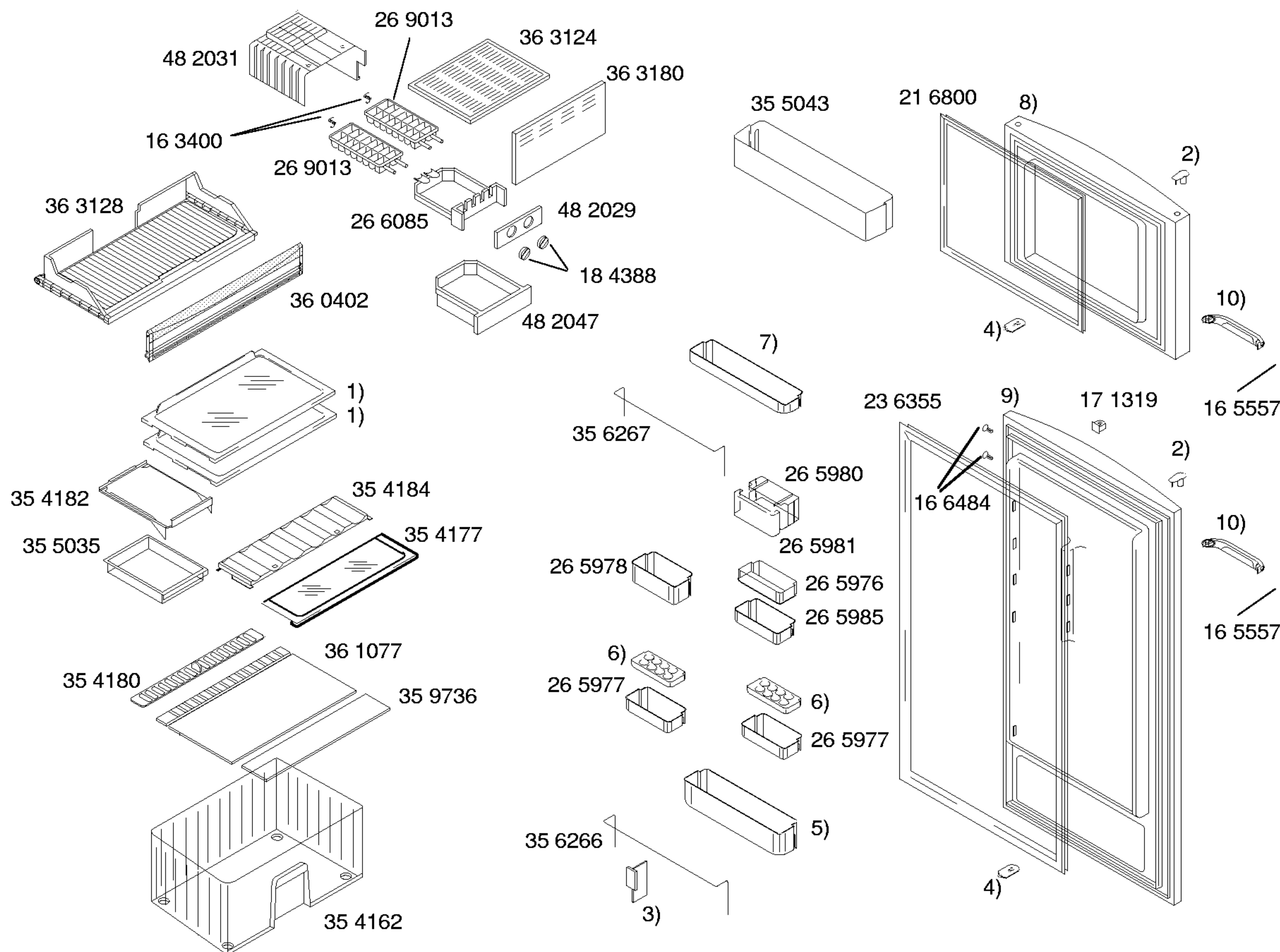
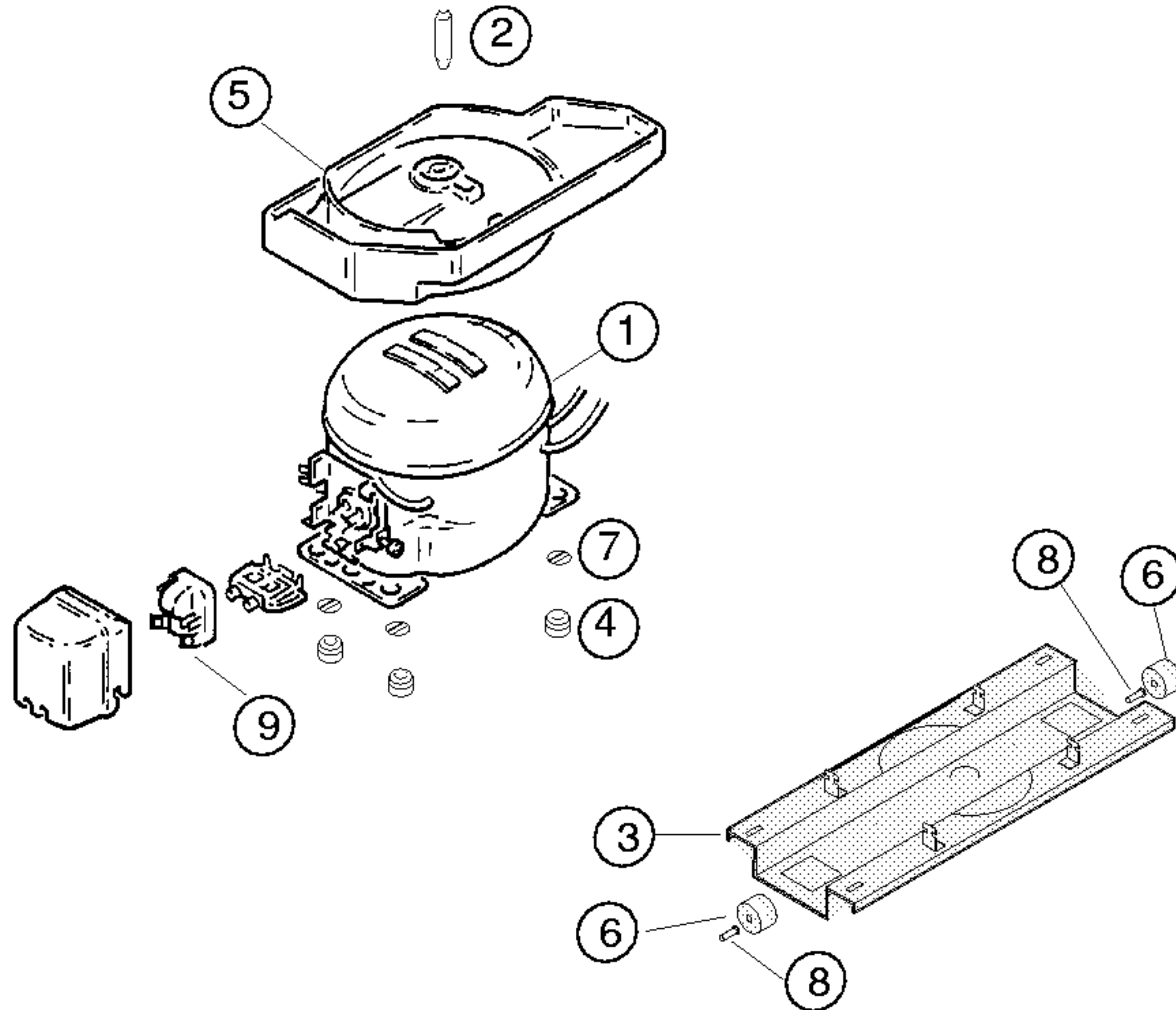


Mat. – Nr. – Konstante	
3740	...
Gebrauchsanweisung	
52 9447	
1)	17 1312
2)	17 1304
3)	36 3131
4)	18 4380
5)	16 5552
6)	36 3132
7)	17 1314
	V01,V02
8)	17 1308
	V04,V02
9)	18 8194
	V03,V04,V05,V06
	V07,V08,V09
10)	18 8188
	V03,V04,V05,V06
	V07,V08,V09
11)	18 8191
	V03,V04,V05,V06
	V07,V08,V09
12)	18 8196
	V03,V04,V05,V06
	V07,V08,V09
13)	17 6137
14)	36 3151
	V01,V02,V03,V04
	36 6905
	V06,V07,V08,V09



Mat. – Nr. – Konstante
3740

- 1) 35 4176
- 2) 17 1321
- 3) 17 3581
- 4) 17 1506
- 5) 35 6265
- 6) 26 7196
- 7) 35 6264
- 8) 21 4948
- V01
- 21 8601
- V02,V03,V04,V05
- V06,V07,V08,V09
- 9) 23 5098
- V01
- 23 8034
- V02,V03,V04,V05
- V06,V07,V08,V09
- 10) 48 1020
- V01,V02,V03
- 26 5975
- V04,V05,V06,V07
- V08,V09



Pos.	Aspera		
	NBT 1116Y		
1	14 2193		
2	18 4389		
3	35 4158		
4	16 3427		
5	36 3166		
6	17 1318		
7	17 1519		
8	18 1014		
9	43 8467		
10			
11			
12			

TECHNISCHE DATEN/TECHNICAL DATA/TEKNIK BİLGİLER				
Verdichter/Compressor/Kompresör		Aspera		
Typ/Type/Tip		NBT1116Y		
Förderleistung/Delivery/Verim/h				
Anlaufstrom/Starting current/Giris akimi		A	7	
Widerstand/Resistance/Rezistans Ha/		Ω	13.2	
Hi/aux.			17.6	
Temp.Reyler/Thermostat/Termostat		Elektronisch		
Typ/Type/Tip				
Reglerstellung/Position/Termostat pozisyonu				
Schaltwerte/Acma kapama degerleri		..ein/acma °C		
Valeurs de commutation/Termostat degeri		..aus"/kapama		
(..abtaven' od)		..alarm'		
Füllmenge/Fill. quantily/ Dolum miktarı		R600a	g	*
Anschlusswert/Comm. load/Giris gucu		W	150	
Heizung/Heater/Rezistans		Verdampfer	Ablaufrinne	Klappe
Widerstand/Resistance/Direnc		Ω		4-V01,2,3,7,8,9
Leistung/Power/Guc (Annehmbare min werte in 220V)		W	111	48
3-V04,5,6				
Ventilador/Blower/Vantilatör		Verdampfer		
Widerstand/Resistance/Rezistans		Ω		
Magnetventil/Magnetic valve/Manyetik valf				
Widerstand/Resistance/Rezistans		Ω		
Spannung/Voltage/Gerilim		V		
Temp.Reyler/Thermostat/Termostat				

* Siehe Typenschild/Mamul etiketine bakiniz