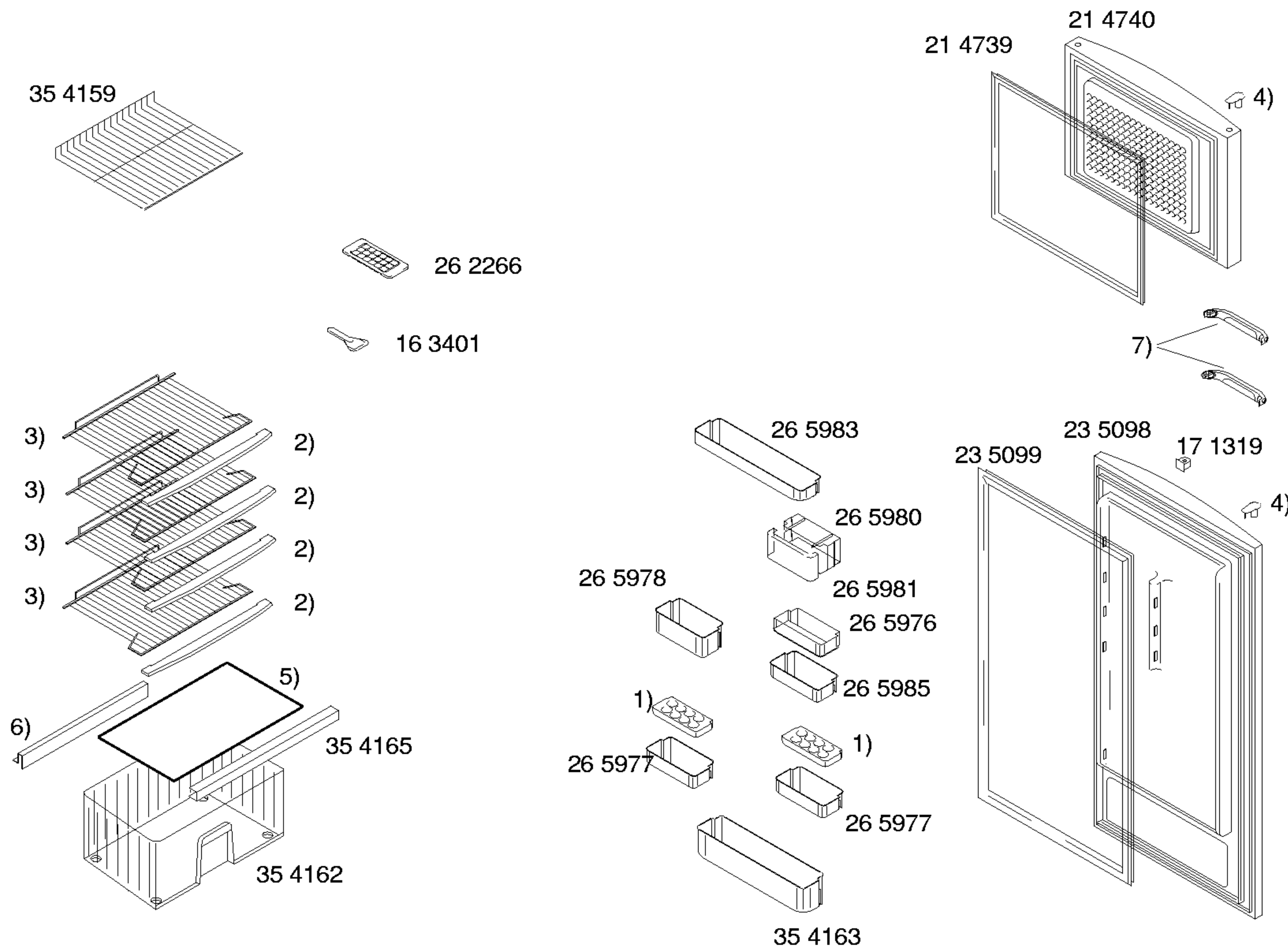
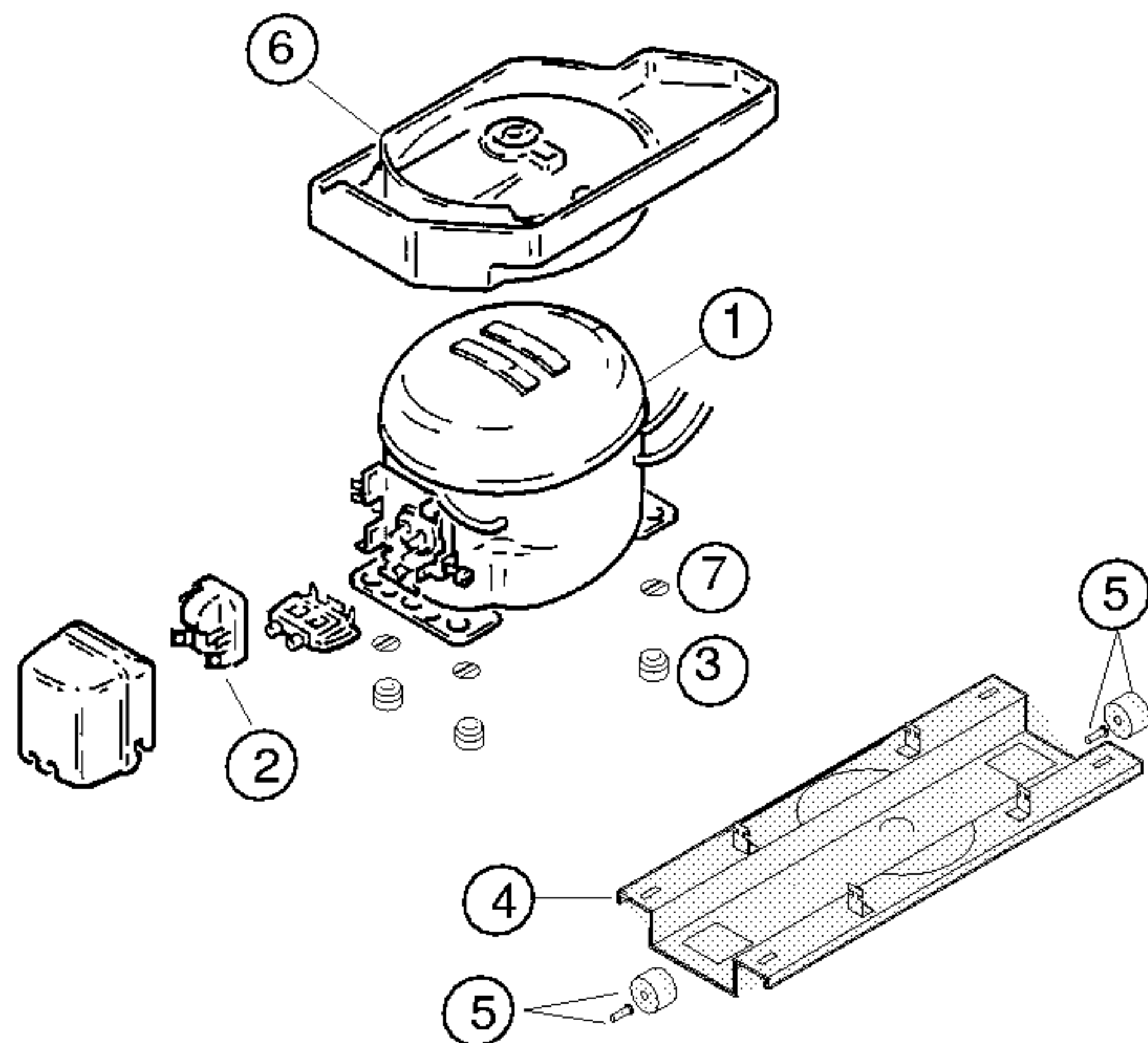


Mat. – Nr. – Konstante
3740



- 1) 26 5982
- 2) 35 4164
- 3) 35 4166
- 4) 17 1321
- 5) 35 4167
- V01
- 35 7912
- V02,V03,V04,V05
- V06,V07
- 6) 35 4161
- V01
- 35 7913
- V02,V03,V04,V05
- V06,V07
- 7) 26 5975
- V01,V02,V03,V06
- 48 1020
- V04,V05,V07



Pos.			
	Danfoss		
	NLE13K		
1	14 1877		
2	16 5570		
3	16 3427		
4	35 4158		
5	17 1318		
6	26 5327		
7	17 1519		
8			
9			
10			
11			
12			

TECHNISCHE DATEN/TECHNICAL DATA/TEKNIK BİLGİLER			
Verdichter/Compressor/Kompresör	Danfoss		
Typ/Type/Tip	NLE13K		
Förderleistung/Delivery/Verim/h			
Anlaufstrom/Starting current/Giris akimi	A	6.6	
Widerstand/Resistance/Rezistans Ha/	Ohm	10.7	
Hi/aux.		13.0	
Temp.Reyler/Thermostat/Termostat	K59/P1777		
Typ/Type/Tip			
Reglerstellung/Position/Termostat pozisyonu			
Schaltwerte/Actua kapama degerleri	..ein/acma °C	+3.5 +3.5	
Valeurs de commutation/Termostat degeri	..aus"/kapama	-31 -20	
(..abtaven' od)	..alarm'		
Füllmenge/Fill. quantily/ Dolum miktarı	R600	g	*
Anschlusswert/Comm. load/Giris gucu	W	*	
Heizung/Heater/Rezistans			
Widerstand/Resistance/Direnc	Ohm		
Leistung/Power/Guc	W		
Ventilador/Blower/Vantilatör			
Widerstand/Resistance/Rezistans	Ohm		
Magnetventil/Magnetic valve/Manyetik valf			
Widerstand/Resistance/Rezistans	Ohm		
Spannung/Voltage/Gerilim	V		
Temp.Reyler/Thermostat/Termostat			

* Siehe Typenschild/Mamul etiketine bakınız