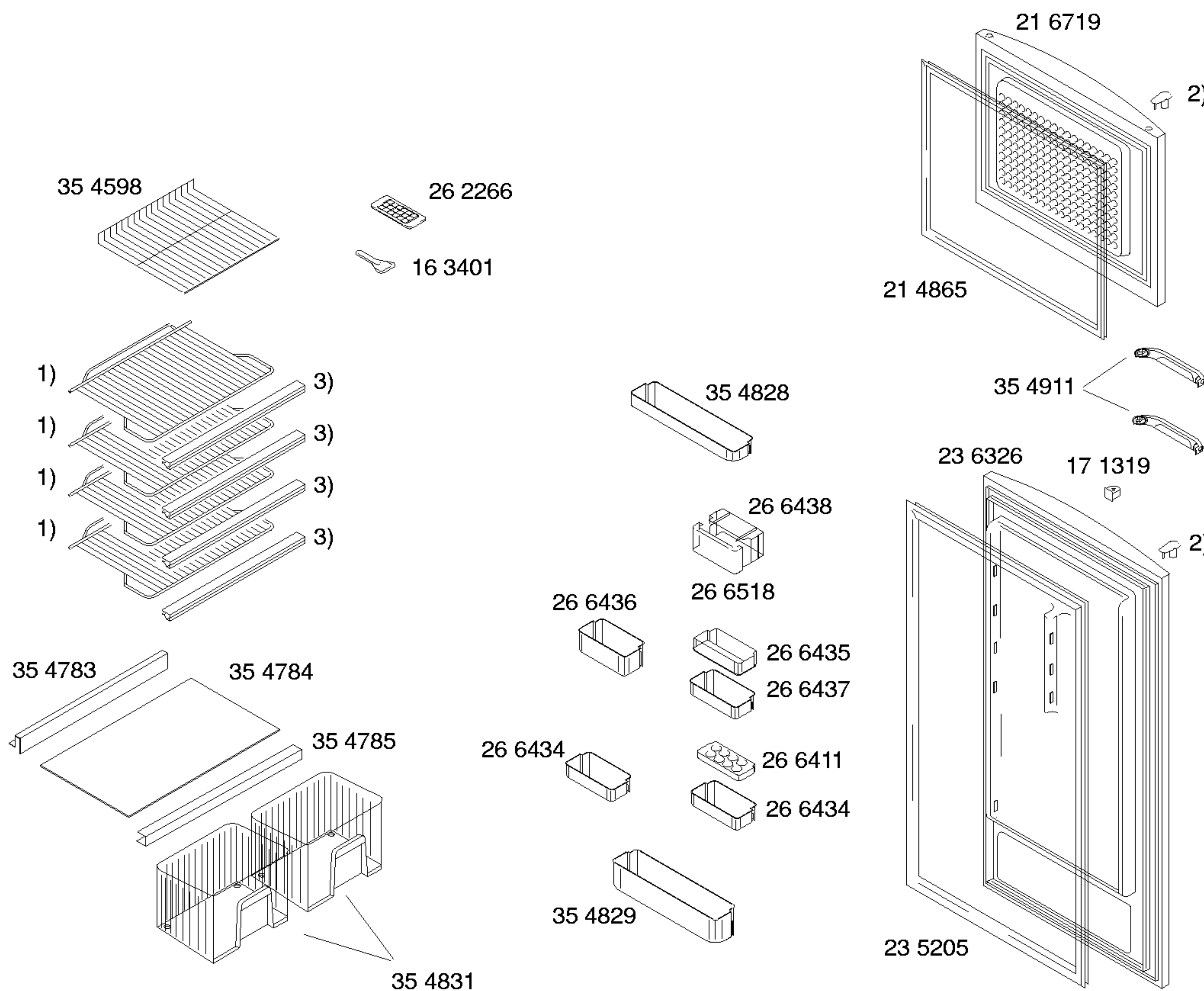


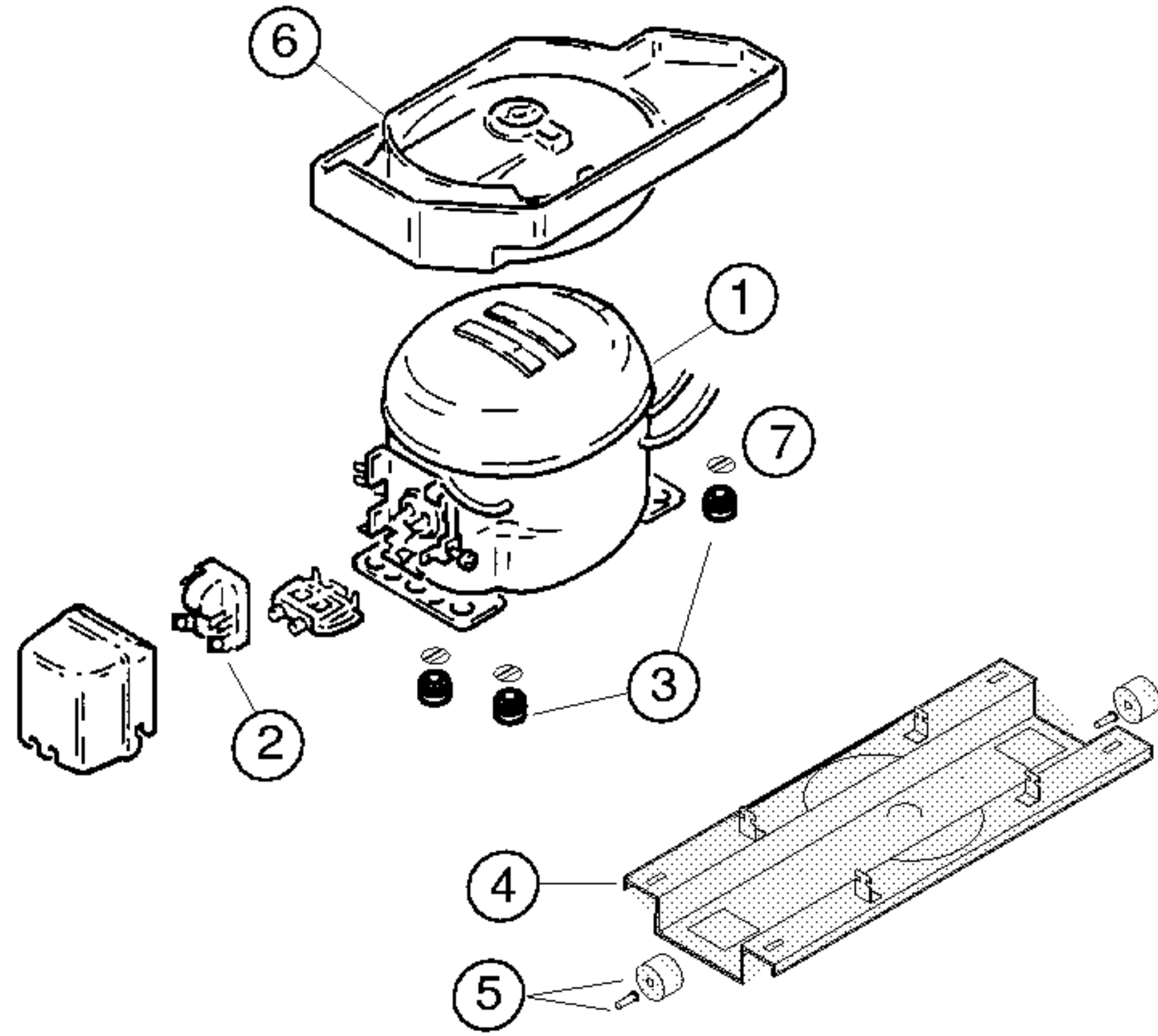
Mat. – Nr. – Konstante
3740

Gebrauchsanweisung
52 3177
(DE,GB,FR,NL,IT,
ES,PT,GR)



Mat. – Nr. – Konstante
3740

- | | |
|----|---------|
| 1) | 35 4780 |
| 2) | 17 1321 |
| 3) | 35 4789 |



Pos.	Danfoss		
	NLE15K		
1	14 1926		
2	16 5570		
3	16 3427		
4	35 4583		
5	17 1318		
6	26 5327		
7	17 1519		
8			
9			
10			
11			
12			

TECHNISCHE DATEN/TECHNICAL DATA/TEKNIK BİLGİLER			
Verdichter/Compressor/Kompresör		Danfoss	
Typ/Type/Tip		NLE15K	
Förderleistung/Delivery/Verim/h			
Anlaufstrom/Starting current/Giris akimi		A	6.6
Widerstand/Resistance/Rezistans Ha/		Ohm	10.7
Hi/aux.			13.0
Temp.Reyler/Thermostat/Termostat		K59/P1777	
Typ/Type/Tip			
Reglerstellung/Position/Termostat pozisyonu			
Schaltwerte/Acma kapama degerleri		..ein/acma °C	+3.5 +3.5
Valeurs de commutation/Termostat degeri		..aus"/kapama	-31 -20
(..abtaven' od)		..alarm'	
Füllmenge/Fill. quantily/ Dolum miktari		R600 g	92
Anschlusswert/Comm. load/Giris gucu		W	175
Heizung/Heater/Rezistans		Ohm	
Widerstand/Resistance/Direnc		W	
Leistung/Power/Guc			
Ventilador/Blower/Vantilatör		Ohm	
Widerstand/Resistance/Rezistans			
Magnetventil/Magnetic valve/Manyetik valf		Ohm	
Widerstand/Resistance/Rezistans		V	
Spannung/Voltage/Gerilim			
Temp.Reyler/Thermostat/Termostat			

* Siehe Typenschild/Mamul etiketine bakiniz