





LCD TELEVISION INSTRUCTION MANUAL

GB

DLT-26C2
DLT-26C3
DLT-32C2
DLT-32C3
DLT-32C5
DLT-32C6
DLT-32C7
DLT-37C3
DLT-37C7

Helpline Number: 0870 100 2525

Caution

	CAUTION RISK OF ELECTRIC SHOCK DO NOT OPEN	
CAUTION : TO REDUCE THE RISK OF ELECTRIC SHOCK, DO NOT REMOVE COVER (OR BACK). NO USER-SERVICEABLE PARTS INSIDE. REFER SERVICING TO QUALIFIED SERVICE PERSONNEL.		



The lightning flash with arrowhead symbol, within an equilateral triangle, is intended to alert the user to the presence of uninsulated "dangerous voltage" within the product's enclosure that may be of sufficient magnitude to constitute a risk electric shock.



The exclamation point within an equilateral triangle is intended to alert the user to the presence of important operating and servicing instructions in the literature accompanying the appliance.

WARNING: TO REDUCE THE RISK OF FIRE OR ELECTRIC SHOCK HAZARD, DO NOT EXPOSE THIS APPLIANCE TO RAIN OR MOISTURE.

CAUTION : TO PREVENT ELECTRIC SHOCK, MATCH WIDE BLADE OF PLUG TO WIDE SLOT, FULLY INSERT.



DISPOSAL OF USED ELECTRICAL & ELECTRONIC EQUIPMENT (Europe only)

The meaning of the symbol on the product, its accessory or packaging indicates that this product shall not be treated as household waste. Please, dispose of this equipment at your applicable collection point for the recycling of electrical & electronic equipments waste. In the European Union and Other European countries which there are separate collection systems for used electrical and electronic product. By ensuring the correct disposal of this product, you will help prevent potentially hazardous waste to the environment and to human health, which could otherwise be caused by unsuitable waste handling of this product. The recycling of materials will help conserve natural resources. Please do not therefore dispose of your old electrical and electronic equipment with your household waste. For more detailed information about recycling of this product, please contact your local city office, your household waste disposal service or the shop where you purchased the product.

Important Safeguards

Please read the following safeguards for your TV and retain for future reference. Always follow all warnings and instructions marked on the television.

1. Read, Retain and Follow All Instructions

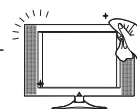
Read all safety and operating instructions before operating the TV. Retain them safely for future reference. Follow all operations and instructions accordingly.

2. Heed Warnings

Adhere to all warnings on the appliance and in the operating instructions.

3. Cleaning

Unplug the TV from the wall outlet before cleaning. Do not use liquid, abrasive, or aerosol cleaners. Cleaners can permanently damage the cabinet and screen. Use a lightly dampened cloth for cleaning.



4. Attachments and Equipment

Never add any attachment and/or equipment without approval of the manufacturer as such additions may result in the risk of fire, electric shock or other personal injury.

5. Water and Moisture

The apparatus shall not be exposed to dripping or splashing and that no objects filled with liquids, such as vases, shall be placed on the apparatus.



6. Setting

Do not place this TV on an unstable cart, stand or table. Placing the TV on an unstable base can cause the TV to fall, resulting in serious personal injuries as well as damage to the TV. Use only a cart, stand, bracket or table recommended by the manufacturer or salesperson.



7. Ventilation

Slots and openings in the cabinet are provided for ventilation and to ensure reliable operation of the TV and to protect it from overheating. Do not cover the ventilations openings in the cabinet and never place the set in a confined space such as built-in cabinet unless proper ventilation is provided. Leave a minimum 10 cm gap all around the unit.

8. Power Source

This TV should be operated only from the type of power source indicated on the marking label. If you are not sure of the type of power supplied to your home, consult your appliance dealer or local power company.

9. Grounding or Polarization

This TV is equipped with a polarized alternating current line plug (a plug having one blade wider than the other). This plug will fit into the power outlet only one way. This is a safety feature. If you are unable to insert the plug fully into the outlet, try reversing the plug. If the plug should still fail to fit, contact your electrician to replace your obsolete outlet. Do not defeat the safety purpose of the polarized plug. A warning that an apparatus with CLASS I construction shall be connected to a MAINS socket outlet with a protective earthing connection.

10. Power-Cord Protection

Power-supply cords should be routed so that they are not likely to be walked on or pinched by items placed upon or against them, paying particular attention to cords at plugs, wall outlets, and the point where they exit from the TV. MAINS plug is used as the disconnect device, the disconnect device shall remain readily operable.

11. Lightning

For added protection for this TV during a lightning storm, or when it is left unattended and unused for long periods of time, unplug it from the wall outlet and disconnect the antenna or cable system. This will prevent damage to the TV due to lightning and power-line surges.

Important Safeguards

12. Power Lines

An outside antenna system should not be located in the vicinity of overhead power lines or other electric light or power circuits, or where it can fall into such power lines or circuits. When installing an outside antenna system, extreme care should be taken to keep from touching such power lines or circuits as contact with them might be fatal.

13. Overloading

Do not overload wall outlets and extension cords as this can result in a risk of fire or electric shock.



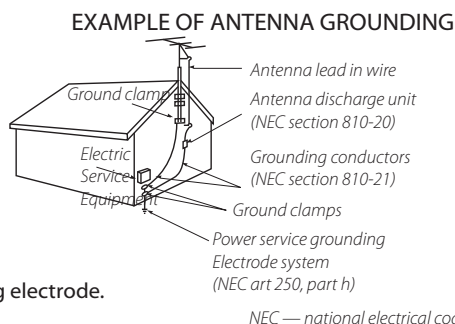
14. Object and Liquid Entry

Never push objects of any kind into this TV through openings as they may touch dangerous voltage points or short-out parts that could result in fire or electric shock. Never spill liquid of any kind on or into the TV.

15. Outdoor Antenna Grounding

If an outside antenna or cable system is connected to the TV, be sure the antenna or cable system is grounded so as to provide some protection against voltage surges and built-up static charges.

Section 810 of the National Electric Code, ANSI /NFPA No. 70-1984, provides information with respect to proper grounding of the mast and supporting structure, grounding of the lead in wire to an antenna discharge unit, size of grounding conductors, location of antenna discharge unit, connection to grounding electrodes, and requirements for the grounding electrode.



16. Servicing

Do not attempt to service this TV yourself as opening or removing covers may expose you to dangerous voltage or other hazards. Refer all servicing to qualified service personnel.

17. Damage Requiring Service

Unplug the TV from the wall outlet and refer servicing to qualified service personnel under the following conditions:

- When the power-supply cord or plug is damaged.
- If liquid has been spilled, or objects have fallen into the TV.
- If the TV has been exposed to rain or water.
- If the TV does not operate normally by following the operating instructions. Adjust only those controls that are covered by the operating instructions as an improper adjustment of other controls may result in damage and will often require extensive work by a qualified technician to restore the TV to its normal operation.
- If the TV has been dropped or the cabinet has been damaged.
- When the TV exhibits a distinct change in performance - this indicates a need for service.

18. Replacement Parts

When replacement parts are required, be sure the service technician has used replacement parts specified by the manufacturer or have the same characteristics as the original part. Unauthorized substitutions may result in fire, electric shock or other hazards.

19. Safety Check

Upon completion of any service or repair to the TV, ask the service technician to perform safety checks to determine that the TV is in safe operating condition.

20. Heat

The product should be situated away from heat sources such as radiators, heat registers, stoves, or other products (including amplifiers) that produce heat.



21. Disconnection

Please place the TV set in such a way that the main plug can be easily disconnected.

Warning

This section must be read carefully and followed by the user prior to the operation of the product.

The manual states important instructions for the user's own safety, and the proper operation of the product.



WARNING

Ignoring or disregarding the contents of this section and improper operation of the product may result in the person's death or serious injury.

In case of an accident, please unplug the unit from the outlet immediately.

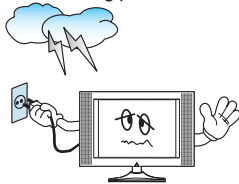
To reduce the risk of electric shock, do not remove cover or back. No user-serviceable parts inside. Refer to qualified service personnel for repair.



Do not put any object that contains water - such as flowerpot - near to the unit. The water may penetrate into the unit, and be a cause of fire or hazardous electric shock.



To prevent fire and damages to the product, unplug the unit from the outlet during lightning storm, or when it is left unattended and unused for a long period of time.



Do not put on or use the product near water and moisture-such as in a bathroom, washbowl, etc. It may be a cause of fire and electric shock hazards.



Slots and openings in the case are provided for ventilation to ensure reliable operation of the product. Never put in any item-such as a coin, paper, match- through these openings since it may touch dangerous voltage points that could result in fire or shock hazard.



Do not let children hang on or climb on the product since it may be a cause of serious injury.



Hold the plug when unplugging the unit from the outlet. The cord may cause fire or electric shock if damaged.



Do not cause the product to lean or put it in an unstable place since it may cause a serious injury to a person, as well as damage to the product if it falls.



Warning

This section must be read carefully and followed by the user prior to the operation of the product.

The manual states important instructions for the user's own safety, and the proper operation of the product.

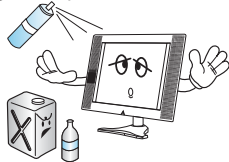


CAUTION

Ignoring or disregarding the contents of this section and improper operation of the product may result in the person's death or serious injury.

Please keep the user's manual in a safe place for future reference.

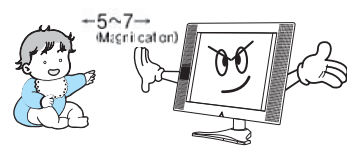
Do not put volatile substance such as benzene, naphtha- near the product since it may cause a change in the product's colour.



Do not spill water or drop the remote controller since it may be a cause of malfunctioning.



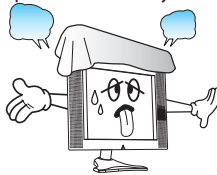
Do not view the TV too closely since it may cause damage in your eyesight.



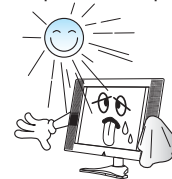
Refer servicing to qualified service personnel for cleaning at least once a year since dust inside the TV set may be a result or fire and malfunctioning of the product.



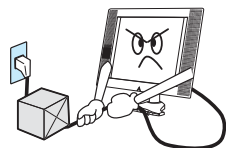
Do not cover the top of the television set. Ventilation will be prevented, and it may be a cause of fire if the product is internally overheated.



The product should be situated away from any heat source such as radiators, heat registers, stoves, or other products that produce heat.



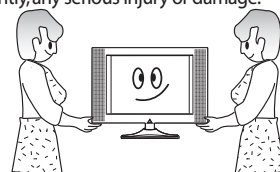
Do not put on any heavy item on the power cord since it may result in fire or hazardous electric shock if the cord is damaged.



Please be advised of electric wires and cables when installing the antenna. It may be a cause of hazardous electric shock and fire if the antenna touches or falls on the electric wire; thus, it must be installed firmly, and far away from the cables.



Unplug the power from the outlet and all the related connections from the unit to prevent electric shock. At least two people must work together to move the TV set when transporting to prevent the TV from falling, and consequently, any serious injury or damage.



Do not touch the power cord with moisturized or wet hands when plugging to or unplugging from the outlet since it may be a cause of electric shock.



Do not expose the product to a dusty or moisturized place since it may be a cause of malfunctioning.

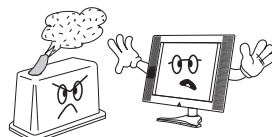


Table of Contents

Installation and Maintenance

Antenna Connection	9
Video Connection	12
Camcorder & Video Game Connection	13
DVD Player Connection	14
STB (Set Top Box) Connection	15
PC Connection	16
Cable TV Broadcasting Connection	18
Connect with the Dolby Digital AMP	19
Name of Each Part	20

Basic Guide

Parts of the Remote Controller	22
Method To Use Basic Menu	24
To Watch TV	25
Setting Up TV Stations	27
DVB Menu	31
Selection of AV and Multimedia Input Signal	37

Application Guide

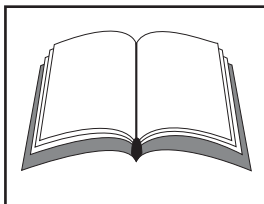
Screen Adjustment	39
Sound Adjustment	43
Selection of Language	45
Adjustment of Time	46
Other Functions	48
Teletext	49
Troubleshooting	50
Standard of Product	52

Supplied Accessories

Make sure that the following accessories are provided with the product.



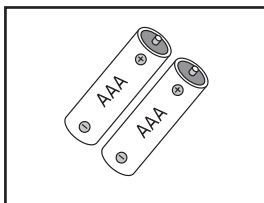
AC cord



Instruction manual



Remote controller



Batteries



Cover Bottom

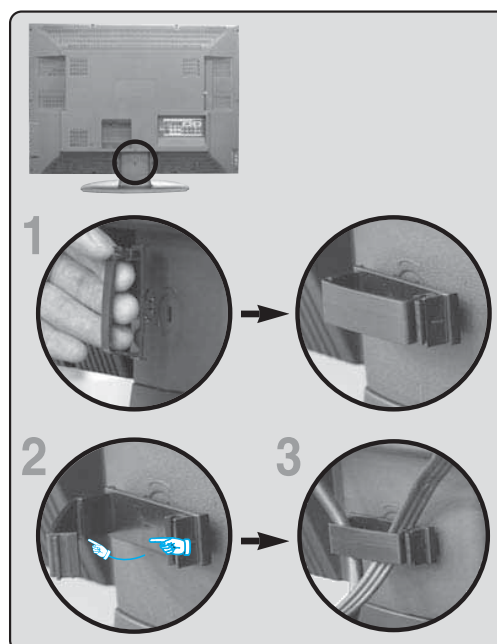
- When you install wall mounting you set up cover bottom like upper picture.



Cable holder
(Except C2 Series)

The method of wire arrangement

1. Assemble the cable holder enclosed on the back of TV. (PICTURE 1)
(ASSEMBLY METHOD: After you push the „A“(prominence part of cable holder) in the hole, rotate the cable holder clockwise as an angle of 90°. You can separate in reverse order of assembly.)
2. Open the cable holder. (PICTURE 2)
(you can open the cable holder that press and push „B” part.)
3. After arrange lines with the cable holder, lock the „B” again. (PICTURE 3)

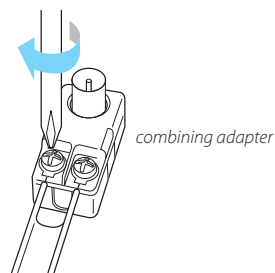


Antenna Connection

Indoor Antenna Connection

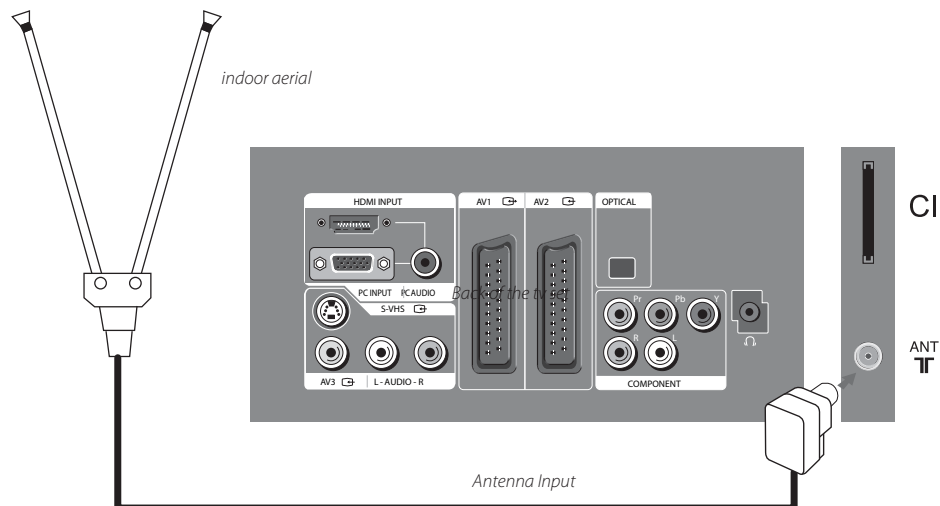
1. Connect the feeder cable of the antenna to the combining adapter.

WHEN THE IMAGE IS NOT CLEAR : Unclear screen image and bad reception may be a cause of wrong antenna connection. Be sure to check its direction and place when installing.



2. Connect the combining adapter to the antenna input at the left side of the TV set.

WHEN USING THE COMBINING ADAPTER : You may obtain the combining adapter at your closest Service Centre.



Antenna Connection

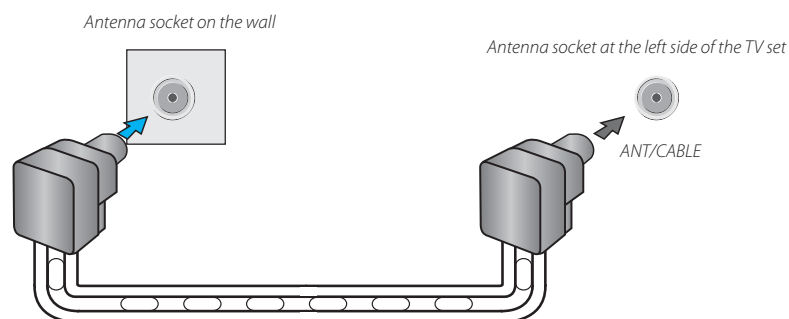
CTV Antenna Connection

Such community TV Antenna installation may be found in most of co-op apartments.

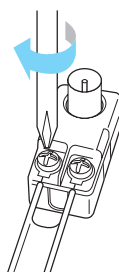
When a coaxial cable is used : Plug the coaxial cable to the antenna socket, and fix it firmly by turning it to the right.



When a feeder cable is used : Plug the coaxial cable to the antenna socket, and fix it firmly by turning it to the right.



Feeder cable connection with the combining adapter

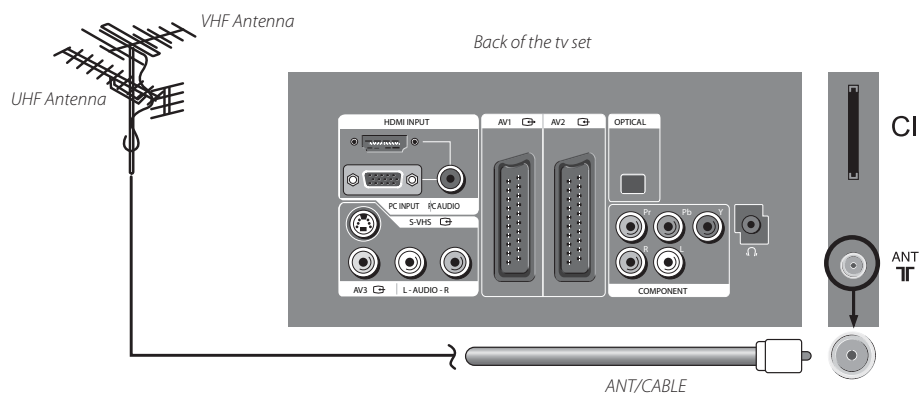


Antenna Connection

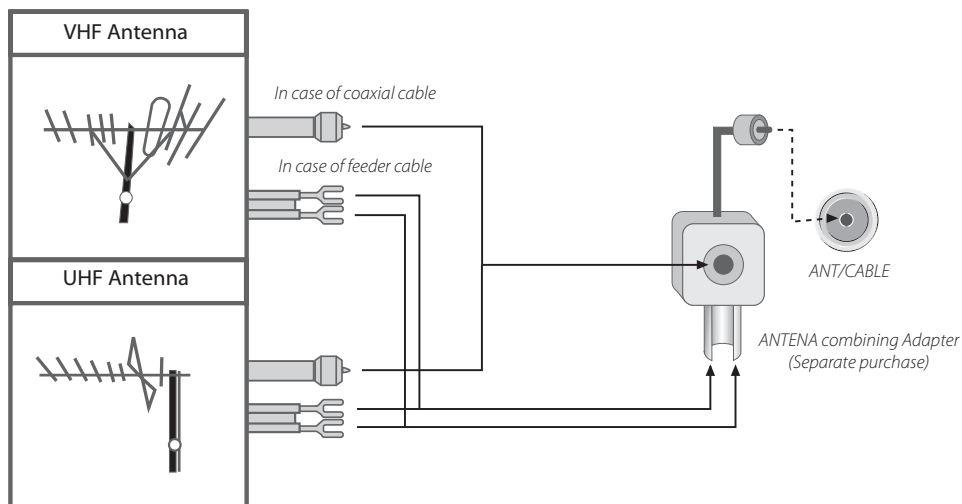
Outdoor Antenna Connection

Outdoor Antenna connection-such as VHF or/and UHF-may be necessary for installation at private houses.

Single Antenna Connection



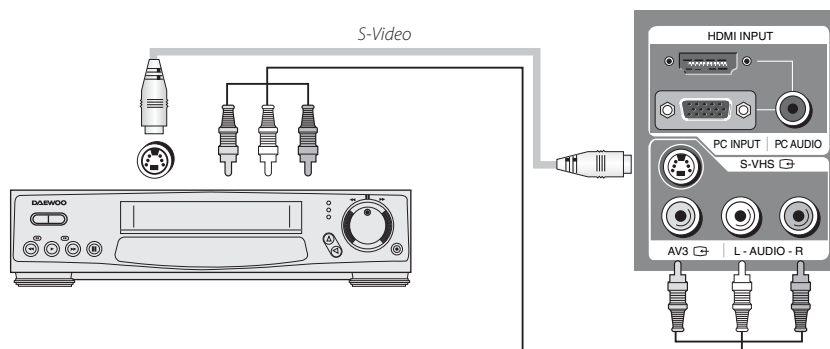
Separate Antenna Connection.



Video Connection

Connecting with an External Source

You may connect an S-Video input to enjoy clearer and brighter picture images. You can make the connection with the AV3 input.

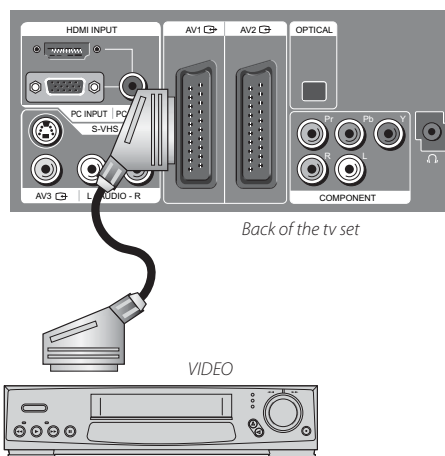


Note : If S-video and RCA jack are connected the same time, The TV set will only detect the S-Video mode.

- If your AV device has both Video OUT terminal and S-Video OUT terminal, the S-Video connection is recommended for better picture quality.

Connecting with SCART VIDEO

1. Prepare the scart lead for picture / sound.
2. Connect the SCART input / output terminal of video with the SCART1(AV1), SCART2(AV2), input/output terminal of TV.
3. Turn on the video, Insert the video cassette, and press the "PLAY" button.




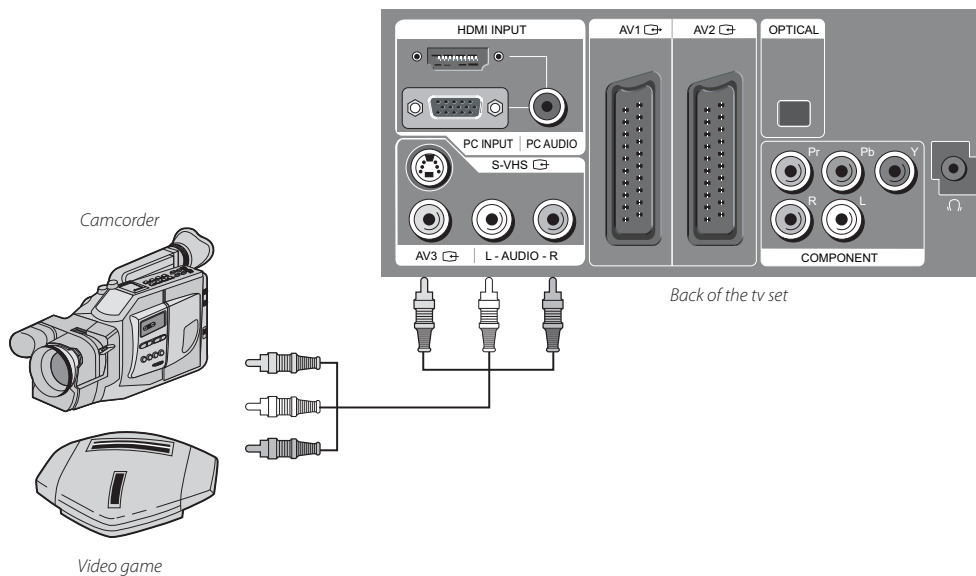
Note :

- SCART1 has CVBS/RGB input and RF output. It is used to connect a STB,VCR and DVD.
- SCART2 has CVBS input. It is used to connect a STB,VCR and DVD.

Camcorder & Video Game Connection

Watching the Camcorder Recording on TV

1. Prepare the S-video and RCA connector.
2. These connectors connect to S-video or AV 3 as shown in the picture below.
3. Turn on the TV set and camcorder/video game.
4. Select AV3/S-video mode, using the "AV" button of the Remote controller or "/" button of the TV set.

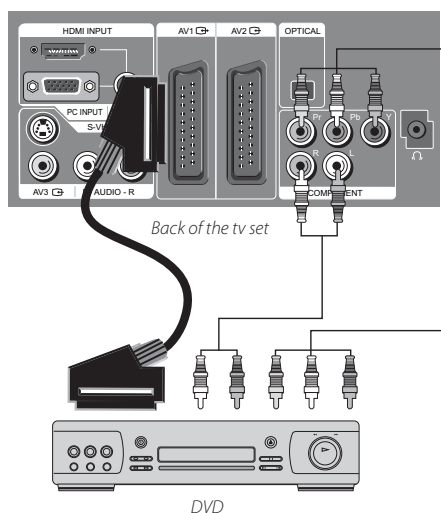


Note : If S-video and RCA jack are connected at the same time, the TV set only detects the S-Video mode.

* If your AV device has both Video OUT terminal and S-Video OUT terminal, the S-Video connection is recommended for better picture quality.

DVD Player connection

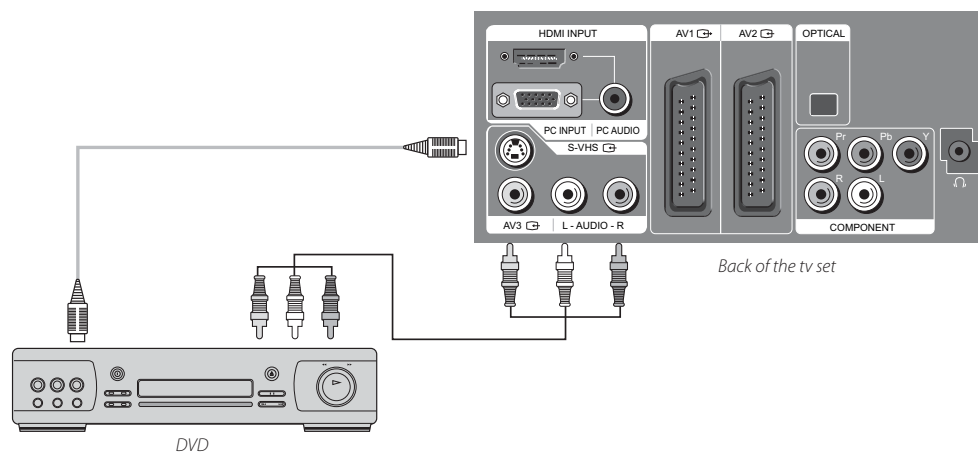
When connecting with a component cable and Euro SCART cable



Note :

- When you connect with the component video, please check the colour of the cable between the DVD and TV set.

When connecting with a S-VHS cable and RCA cable

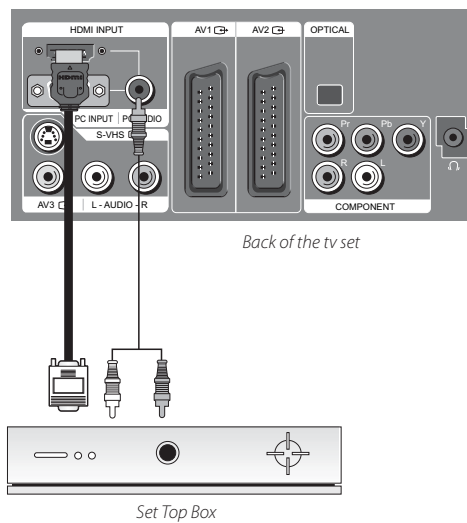


Note :

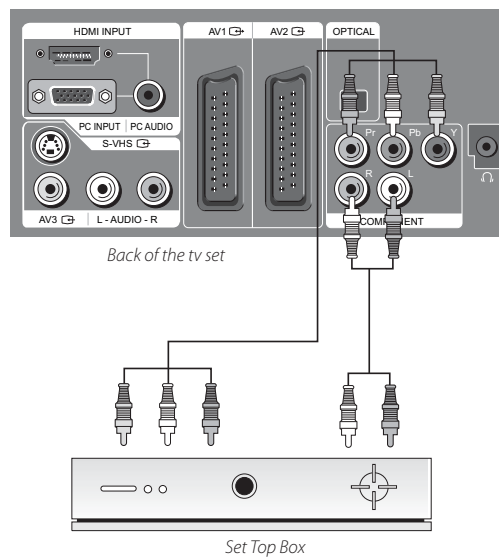
- If S-video and RCA jack are connected at the same time, the TV set will only detect the S-Video mode.
- If your AV device has both Video OUT terminal and S-Video OUT terminal, the S-Video connection is recommended for better picture quality.

STB(Set Top Box) Connection

When connecting with a HDMI cable



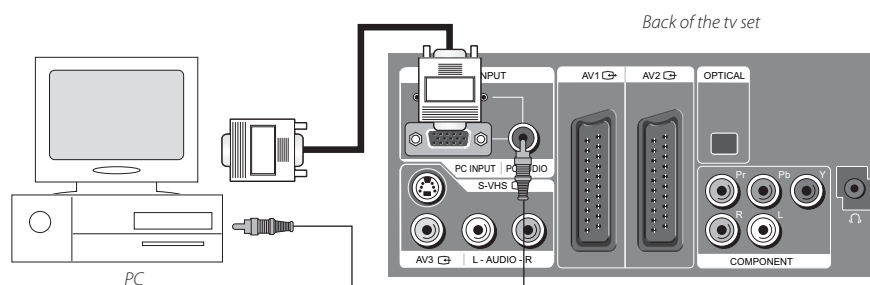
When connecting with a component cable



PC Connection

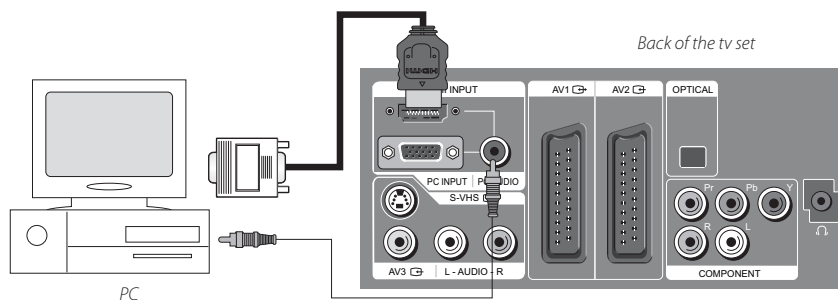
When connecting with PC(D-Sub) cable.

1. First adjust resolution of the PC. (Refer to table in page 17.)
2. Connect between PC and TV set using the D-sub and Audio cable as shown in the picture below.
3. Turn on the PC and TV set.
4. Select PC mode by pressing the "MULTIMEDIA" button on the remote control or "□/→" button of the TV set.



When connecting with a HDMI cable.

1. First adjust resolution of the PC. (Refer to table in page 17.)
2. Connect between PC and TV set using the HDMI and Audio cable as shown in the picture below.
3. Turn on the PC and TV set.
4. select HDMI mode by pressing the "MULTIMEDIA" button on the remote control or "□/→" button of the TV set.



Note : If the graphic card of the PC only supports a DVI signal, you must connect the Audio cable as shown in the picture upper.

PC Connection

PC CONNECTION NOTES:

- 1) The resolution of the TV set is best at 1360(6) x 768(WXGA).
- 2) If there is a [Vertical Frequency] setting menu in the [Display] Menu of the PC, adjust the frequency to 60Hz.
- 3) If the PC resolution is too high, it may be hard to detect signals. Select a suitable resolution.
- 4) HDMI input port receives only digital Signal.
- 5) Depending on the graphic card when you plug & unplug the HDMI connection the screen may not display correctly. Restart the computer if this happens.
- 6) Depending on graphic card, problems like no signal detected or line noises can happen. If these problems happen contact the graphic card company for help.

Multi input resolution available in LCD TV.

Resolution	V-freq	HDMI	PC(D-Sub)	Component	Standard
640 X 480	60Hz	o	o	x	
	72Hz	o	o	x	
	75Hz	o	o	x	VESA Standard
800 X 600	60Hz	o	o	x	VESA Standard
	72Hz	o	o	x	VESA Standard
	75Hz	o	o	x	
1024 X 768	60Hz	o	o	x	VESA Standard
	70Hz	o	o	x	VESA Standard
	75Hz	o	o	x	VESA Standard
1360(6) x 768	60Hz	o	o	x	
	75Hz	o	o	x	
720 X 480	60Hz	o	o	o	
720 X 576	50Hz	o	o	o	
1280 X 720	50Hz	o	o	o	
	60Hz	o	o	o	
1920 X 1080i	50Hz	o	x	o	
	60Hz	o	x	o	
720 X 480i	60Hz	x	x	o	
720 X 576i	50Hz	x	x	o	

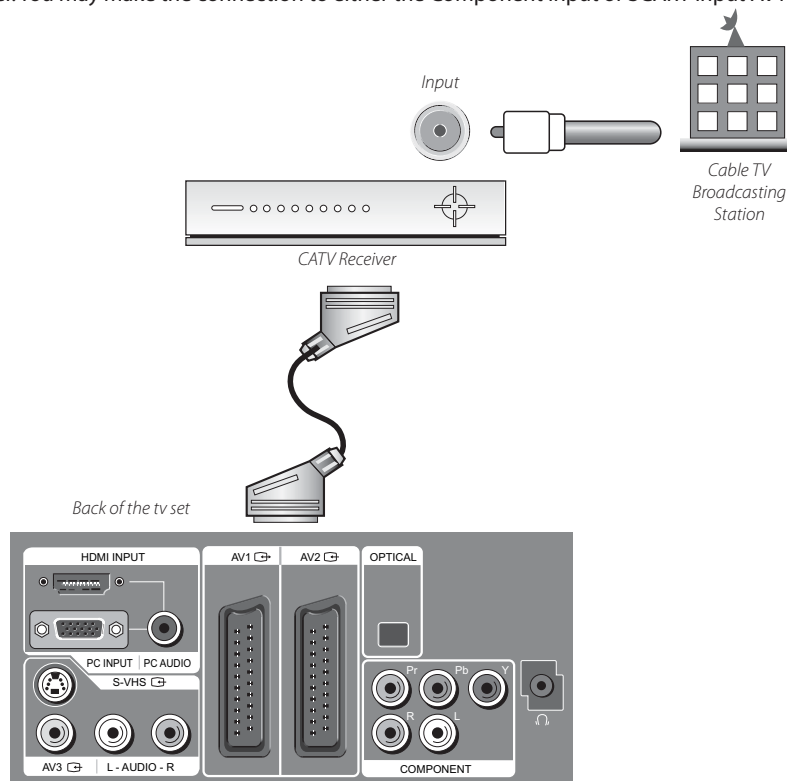
Note :

- When you connect with component, D-Sub, and HDMI, you must check the input resolution of external devices.
- 1280 X 720 mode is commonly used for Component.
- So if this mode is used at PC mode, the screen can be enlarged.

Cable TV Broadcasting Connection

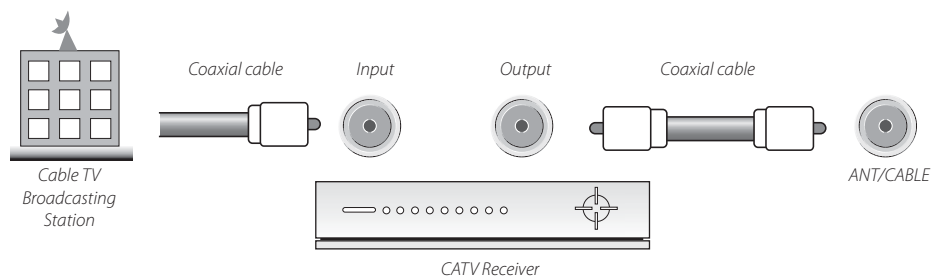
External Input Connection Source

Watching cable television is only possible after you have subscribed to the local broadcasting company and installed a cable receiver. You may make the connection to either the Component input or SCART input AV1 or AV2.



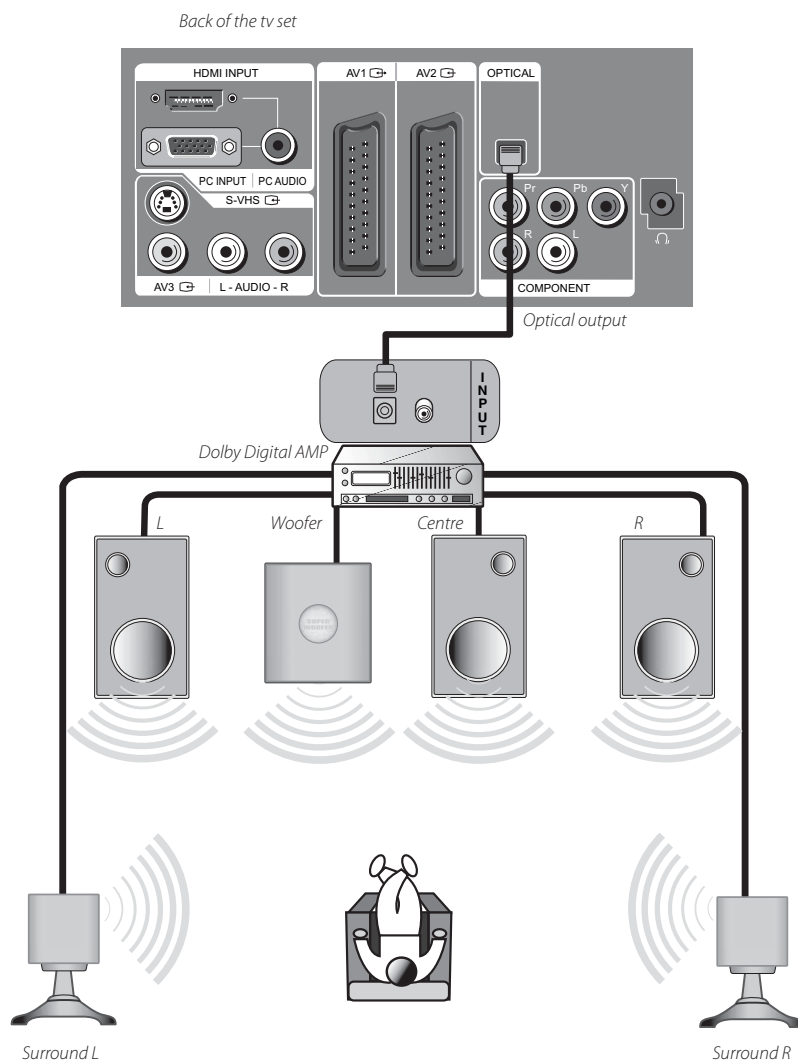
Antenna Input Connection

Watching cable television is only possible after you have subscribed to the local broadcasting company and installed a cable receiver.



Connect with the Dolby Digital AMP.

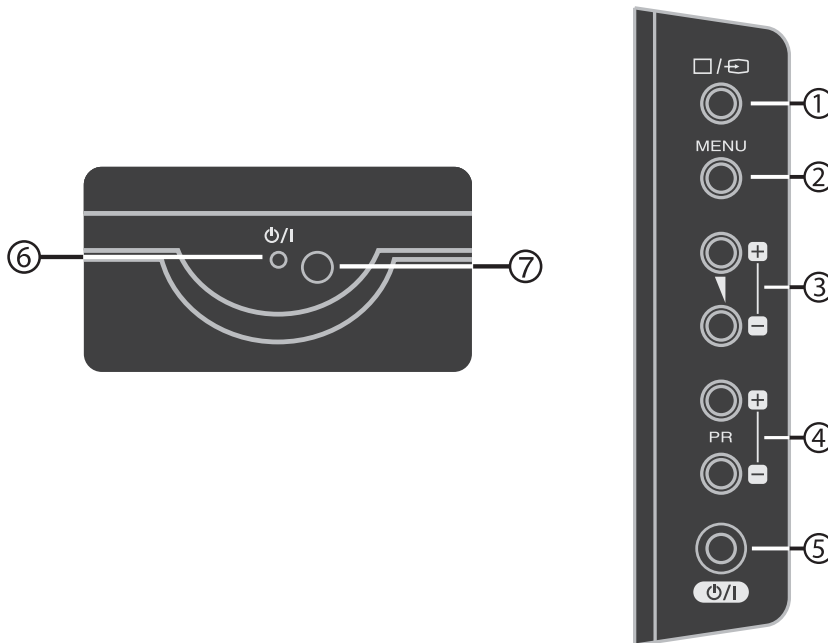
If you connect the optical output to a Dolby digital AMP, you can listen to better sound.



Name of Each Part

Front / Side Panel

Buttons on the TV set have the same functions as those of the remote controller.



Control Key Buttons.

TV/VIDEO Button : Each time you press this button, the TV will cycle through:
TV / AV1 / AV2 / AV3(S-Video) / PC/HDMI / COMPONENT.

MENU Button : Use this button to enter and exit the MENU.

VOL Buttons : Use these buttons to change your TV's volume or to move the cursor in the menu.

PR Buttons : Use these buttons to change channels on your TV or to move the cursor in the menu.

POWER ON button : Use this button to change from TV STAND-by mode to TV ON mode.

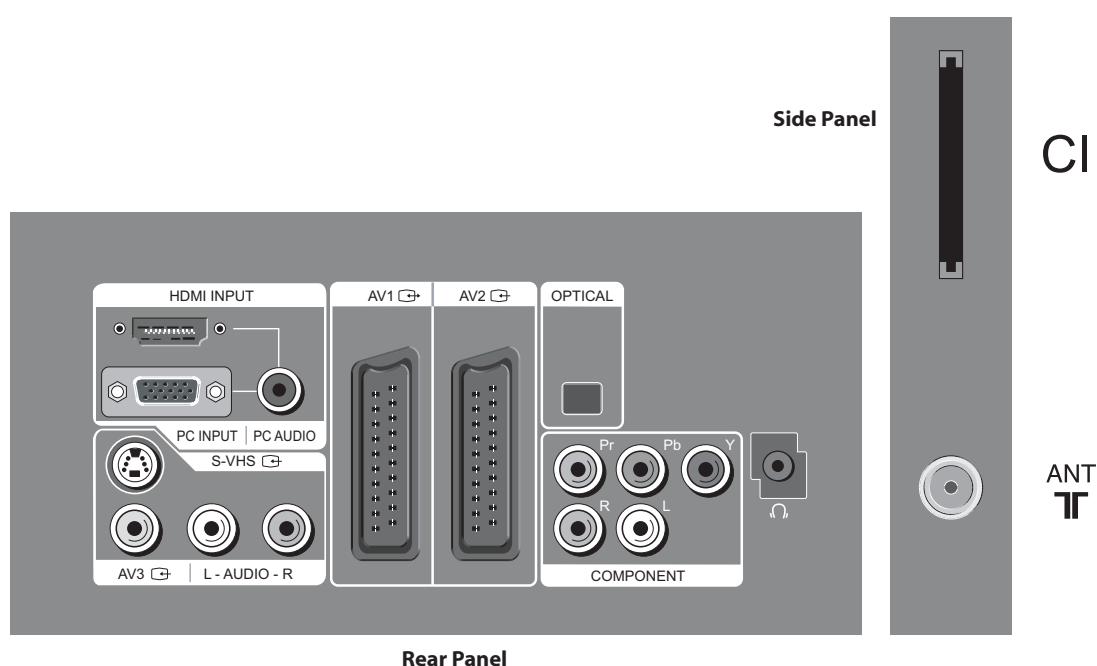
LED Indicator : Light up red in Stand-By mode and Lights up green in TV on mode. When TV is Child Lock mode, LED will cycle through red / off in Stand-By mode.

Remote controller signal receiver

The screen contains the remote controller signal receiving window; therefore, point the remote controller towards the screen when using it.

Name of Each Part

Side and Rear Panel



Parts of the Remote Controller

This remote controller is universal; thus, it may be convertible for TV, Video, CTV, etc.



1. **MUTE** : Press this button, and the sound goes off. Press again, and the sound returns.
2. **POWER** : TV on/off button in Stand-By mode.
3. **MULTIMEDIA** : Each time you press this button, the TV will cycle through: PC => HDMI => Component => PC
4. **AV** : Each time you press this button, the TV will cycle through: TV => AV1 => AV2 => AV3/S-Video => TV
5. **SLEEP** : Sleep Timer setting.
SLEEP TIMER : OFF => 15 => 30 => 45 => 60 => 75 => 90 => 105 => 120 => OFF
6. **NUMBER** : Press the numbers on this board, you can select PR directly in TV mode.
Note : When the current state is ST-BY, you can turn on the TV using a digit key. Then, a PROGRAMME is selected according to digit number.
7. **S.EFFECT** : Using this button, you can listen to the virtual surround sound.
8. **U/D/I/II** : You can select sound mode in Mono, Stereo, Dual1, Dual2, NiCAM STEREO. It works only in TV mode.
9. **▲VOL▼** : Adjust the volume.
10. **▲PR▼** : Changes program on your TV.
11. **▲/▼** : Move the cursor up/down in the menu.
12. **◀/▶** : Access and adjust item in the menu.
13. **OK/SELECT** : Auto Tuning Start and Manual Tuning Store.
14. **EDIT** : Move on edit mode directly.
Note : This button is also for uses channel skip and teletext.
15. **STILL** : Press this button to freeze the picture.
16. **DVB/Analog** : Each time you press this button, the TV will cycle through DVB & RF Analogue.

Parts of the remote controller



17. **MENU** : Menu display button.

18. **ASPECT** : Select screen aspect ratio.

Auto => 16:9 => 14:9 => 4:3 => Zoom1 => Zoom2 => Auto

Note : When current mode is multimedia (PC, HDMI, Component), the aspect only works as the 16:9 or 4:3 mode.

19. **PICTURE** : changes picture mode as follows:

Normal I => Normal II => Favourite => Normal I

20. **RECALL** : The present modes (TV, Video, Component, PC) and Signal information. In TV mode, the Programme number, Sound, and Clock.

21. **TEXT** : see page 49.

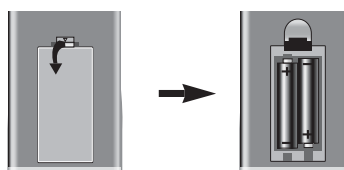
22. **MGDI** : Using this button, you can see MGDI DEMO screen.

Inserting Batteries into the Remote Control Unit

To load the batteries, turn the remote control handset over and open the battery compartment. Insert the batteries (Two 1.5v, type AAA).

Make sure that the polarity matches with the (+) and (-) marks inside of the battery compartment.

Note : To avoid damage from possible battery leakage, remove the batteries if you do not plan to use the remote control handset for an extended period of time.



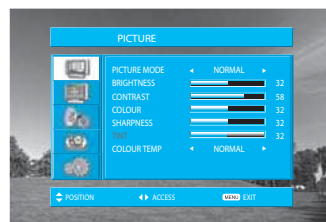
Method To Use Basic Menu

Basic Menu

- The basic menu appears on the screen if you press the "MENU" button of the remote control.
- There are 5 items Picture, Screen, Sound, Function, and Install in the basic menu.
- Each item has sub-items under it. If the desired item is selected, the relevant sub-items are displayed upward.

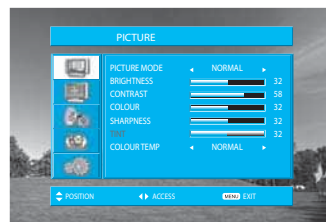
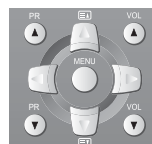
1. Press the "MENU" button.

- The main menu appears if you press the "MENU" button.



2. Press the "▲/▼" button.

- You may setup according to the directions on the screen after selecting the desired item by pressing the "▲/▼" button.
- If the setup is completed, exit from the menu by pressing the "MENU" button.



Picture : Adjust Mode, Brightness, Contrast, Colour, Sharpness and Tint(NTSC only) and Colour Temperature.



Screen : Adjusts Aspect, Position (PC mode only)



Sound : Adjusts Sound Mode, Equalizer and Balance.



Function : Adjusts Language, Timer, Child Lock, MGDI Demo and OSD Halftone.



Install : Adjusts Auto Tuning, Manual Tuning, Setup and Edit.

To Watch TV

On/Off, Number, Mute, Recall, ▲VOL▼, ▲PR▼

Buttons with same name in the main body performs the same function.

Press the "ON/OFF" button of the front side of the set or Remote controller.

- The buttons of the remote control and the main body operate only when AC power is turned on.

Note : You can also turn on the TV using "▲PR▼" or digit key in the ST-BY mode.

When pressing the Program button

- Select two digits if using the number button for channel selection. For example, to watch channel No.9, Press the number button 0 and 9. If pressing only number 9, it takes a longer time to select the channel.

To suddenly turn sound off

- Press the "MUTE (MUTE)" button.
 - No sound is heard if "MUTE(MUTE)" is displayed on the screen.
 - Sound is heard again if you press the "MUTE (MUTE)" button once again.
- For example, please use this button when the telephone rings or when guest comes while watching TV.

Check of TV operation status

- Pressing the "RECALL" button, the status of channel or broadcasting being currently watched or entry status of video component is displayed on the screen.



To Watch TV

- If AV1 terminal on TV set is connected with external device, TV will be ON at AV1 mode. Otherwise, TV will be ON at RF mode.

1. Turning on the TV.

- Plug AC Cord into a power outlet.
- The Stand By LED lamp turns on in red colour.
- Press "⏻ / |" button of the main body or "POWER" button on the remote control.
- The Stand By LED lamp on the front panel begins to flicker in red and green colour and the TV turns on.



2. Adjust program.

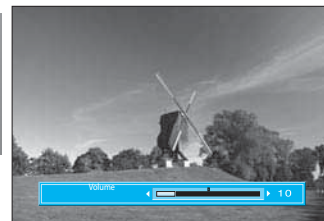
- Select the desired program by pressing the "▲PR▼" button or the number button.



3. Adjust volume.

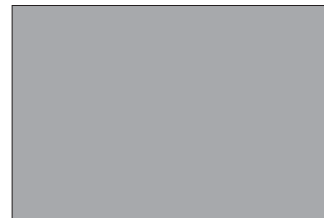
- Sound reduces by pressing the "VOL▼" button.
- Sound increases by pressing the "▲VOL" button.

Note : Sound mutes by pressing the "MUTE" (⏻) button.



4. Turning off the TV.

- Press "⏻ / |" button of the main body or "POWER" button on the remote control.
- TV turns off and the power lamp changes to red colour.



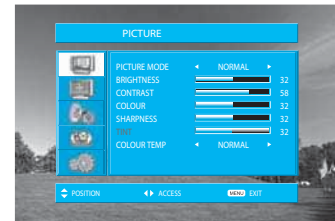
Setting Up TV Stations

Auto Tuning

- All stations that can be received are stored by this method. It is recommended that you use Auto tuning during installation of this set.

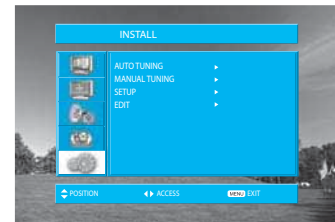
1. Press the "MENU" button to select the Install menu.

- Move the selection bar to the Install menu with "▲/▼" buttons.



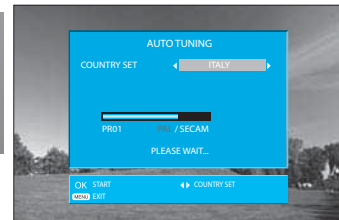
2. Select the "Auto Tuning".

- Place the selection bar on Auto Tuning and press the "▶" button.



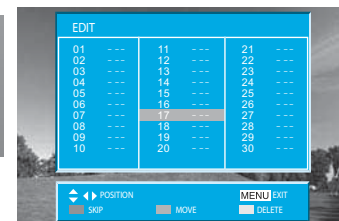
3. Select the country you require with the "◀/▶" button.

- After selecting the country, To start Auto Tuning press the "OK" button.



4. Please wait until the Edit menu appears.

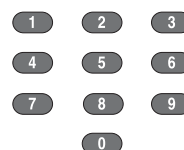
- If you don't want to edit the programs now, escape from the menu with the "MENU" button.



Setting Up TV Stations

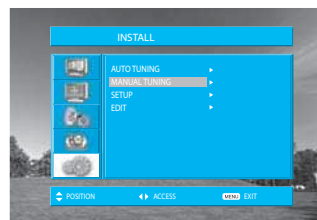
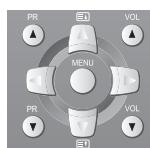
Manual tuning

- 1. Press the Number buttons(0~9) or the "▲PR▼" button to select a program number you want.**



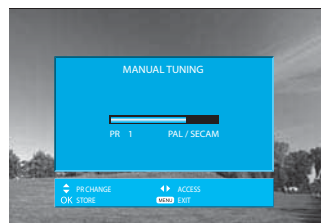
- 2. Locate the selection bar on the Manual tuning at the Install menu.**

- Press the "MENU" button to select the Install menu.
- Move the selection bar to the Install menu with "▲/▼" buttons.
- Place the selection bar on Manual Tuning and press the "▶" button.



- 3. Execute Manual Tuning.**

- First, select PR number you want to store with "▲/▼" buttons on the remote control.
- A tuning screen will appear and cursor will move from left to right / from right to left. If you want to stop tuning press the "MENU" button.
- You should press the "OK" button to store program after the color of system on the OSD turns to white. If you don't want to store the program, press "◀/▶" button to skip program.



Note :

- If you are unable to get any programs using Auto Tuning because of a poor broadcasting signal, it is possible to store the Manual tuning.
- If present channel is SECAM L/L'; TV set search SECAM L/L'. And, if present channel is not SECAM L/L'; TV set search all channels except SECAM L/L'.
- You can change the Programme number in the Edit mode.

Setting Up TV Stations

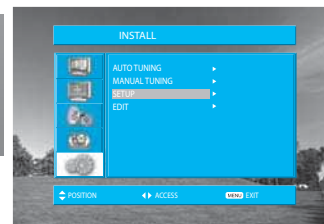
Setup

The Setup menu shows you information as follows:

- Picture information: PAL, SECAM, and SECAM-L
- Sound information: L, DK3, DK2, DK1, I, BG
- Station name, Program number and Real channel number.

1. Searching for channels in the Setup menu

- Press the "▲PR▼" buttons to select a program number you want.
- Move to SETUP in the Install menu.
- Select the colour and sound system which you want.
- Search a real channel with "▲/▼" buttons.



2. Enter a station name

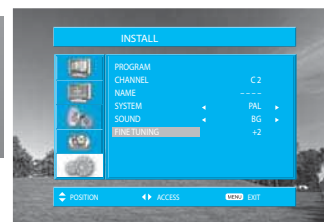
- Move to SETUP in the Install menu.
- Move the cursor to name by pressing "◀/▶" buttons.
- You can enter a station name with the "▲/▼" and "◀/▶" buttons.



Note : Only English is supported in this station name.

3. Fine tuning

- Move to SETUP in the Install menu.
- Move the cursor to Fine Tuning by pressing "▲/▼" buttons.
- Adjust the fine tuning with the "◀/▶" buttons.



Note :

- If you are unable to get a good picture or Sound because of a poor broadcasting signal, adjustment of the fine tuning might improve it.

Setting Up TV Stations

Edit

The Edit menu shows you information as follows:

- Program position assignment: Program number and Station name, Real channel number.
- Skip information: Red (Skip Yes), White (Skip No).
- One can move on this edit mode directly using „EDIT“ button on the remote control.

1. Deleting the program positions.

- Move to **EDIT** in the Install menu.
- Move the selection bar to the program number to delete with the “▲/▼” or “◀/▶” buttons.
- Press the Delete (Yellow) button.



EDIT					
01	---	11	---	21	---
02	---	12	---	22	---
03	---	13	---	23	---
04	---	14	---	24	---
05	---	15	---	25	---
06	---	16	---	26	---
07	---	17	---	27	---
08	---	18	---	28	---
09	---	19	---	29	---
10	---	20	---	30	---

◀ ▶ POSITION MENU EXIT
 SKIP MOVE DELETE

2. Moving the program positions

- Move to **EDIT** in the Install menu.
- Press the Move (Green) button. The program and station name is blocked with green.
- Move the green block to the wanted position using the “▲/▼” or “◀/▶” buttons.
- Press the Move (Green) button again, then program is changed. The moved program becomes to be positioned at the next selected program with green.



EDIT					
01	---	11	---	21	---
02	---	12	---	22	---
03	---	13	---	23	---
04	---	14	---	24	---
05	---	15	---	25	---
06	---	16	---	26	---
07	---	17	---	27	---
08	---	18	---	28	---
09	---	19	---	29	---
10	---	20	---	30	---

◀ ▶ POSITION MENU EXIT
 SKIP MOVE DELETE

Note : The selection is canceled by pressing the Delete (Yellow) button when the selection of the program to be moved is mis-selected.

3. Skipping the Programs

- Move to **EDIT** in the Install menu.
- Move the selection bar to the program number you want to skip
- Press the skip (Red) button, then the colour of the program number and channel will be changed to Red from White.
- The skipped program number will be displayed as red in the **EDIT** menu.



EDIT					
01	---	11	---	21	---
02	---	12	---	22	---
03	---	13	---	23	---
04	---	14	---	24	---
05	---	15	---	25	---
06	---	16	---	26	---
07	---	17	---	27	---
08	---	18	---	28	---
09	---	19	---	29	---
10	---	20	---	30	---

◀ ▶ POSITION MENU EXIT
 SKIP MOVE DELETE

DVB Menu

DVB Menu

- Press the "MENU" button to display the main menu. then, select DVB MENU. You may see the DVB MENU OSD. Whenever you need more information during any DVB MENU directory, press info button "ⓘ" then you will see more detailed information on the screen. And in some menus, you can use blue, yellow, red, green button.
- Those button's function depend on which menu it is.
- This menu is activated only on digital mode.

DVB MENU

Channel list

Favourites

Guides

Timers

Settings

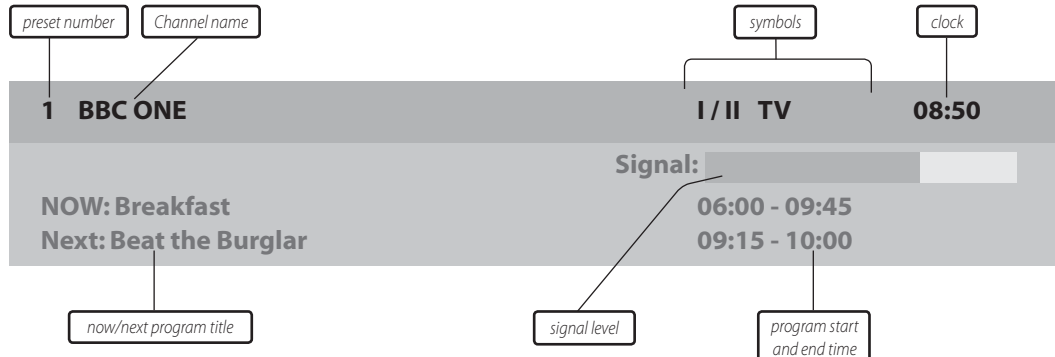
Common Interface

MENU Exit

SELECT Select

About the information on the banner

- When you select a digital program, an information banner is displayed for a few seconds at the bottom of the screen.

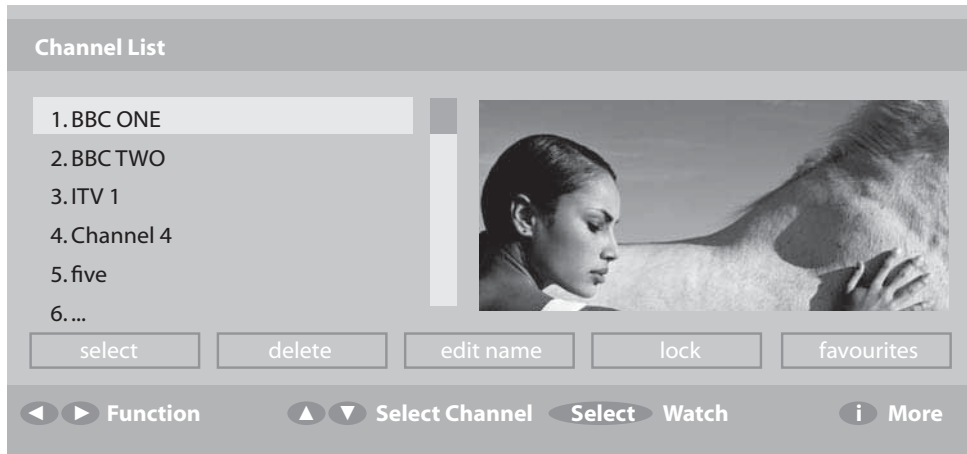


Symbols description

- I / II** Other audio languages are available and can be selected in Configuration (see page no. 35)
- (~)** The selected Favourite list number is displayed here.

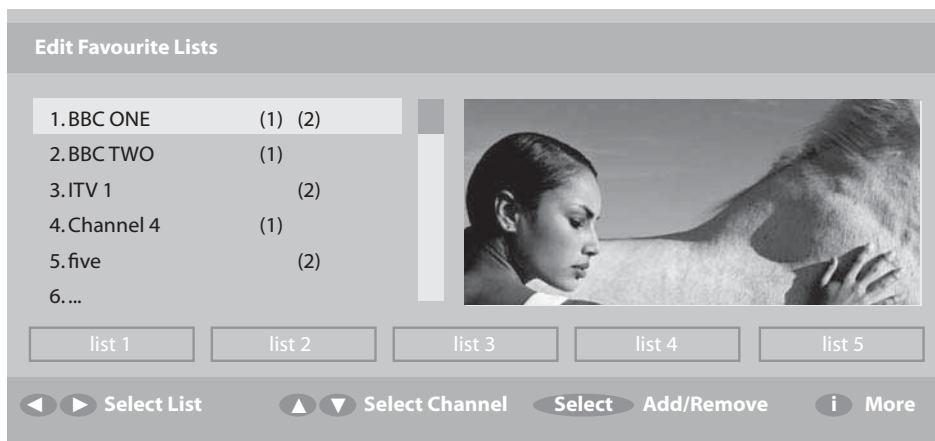
DVB Menu

Channel List



- **Select** and **Delete** function is to choose or delete the channel.
- Select **Edit Name** function to change the channel name as you want.
Press ▲/▼ key to change characters.
- If you want to lock some channels for several reasons, select Lock function and enter the password. you should remember the password.
If you forget, please do auto search again to make password back to default "0000".
How to change default password, see page 35.
- **Favourites** function is the same as **Favourites** on **DVB MENU**.
So you can also setup this function on **Channel List** or the **DVB MENU**.

Favourites



DVB Menu

- This menu allows you to make your favourite channel list. You can make 5 favourite lists.
- Move highlight on any list (1~5). Then press **Select** key to make your own list.
When you press **Select** key, the mark () will show up on the channel name's left side.
For example, If there is mark on ITV 2, that means ITV 2 is selected as your **favourite list 3**. You can make favourite lists up to 5.
- After finishing, to use this function, go to **Configuration (DVB MENU -> SETTING -> Configuration)** and setup Favourite mode on/off. (see page 32).
Or it can also be set up by pressing **LIST** key.

Guides

Select each sub-menus.

Now / Next EGP

- You can check now / next program here. Move **highlight** up/down and get information.
- **Yellow/cyan** button is for changing the schedule.
- Press **Info** key to see detailed information of each program

Guides

Now / Next EPG

List Schedule EPG

MENU

Exit

SELECT

Select

Electronic Programme Guide

Wed 10/11 10:00

Channels	Current Event	Next Event
23. bid - up.tv	Bid for a Bargain live	Bid for a Bargain live
25. TCM	Closedown	Little Off Set
26. UK Style	Closedown	Extreme Makeover: Hom...
27. Discovery	Extreme Engineering	Escape from Death Row
28. DiscoveryH&L	Programmes resume at...	The Allotment
30. ITV4	No information	No information
32. Cartoon Nwk	The Live & Times of Junip...	Xiaolin Showdown
33. Boomerang	Closedown	Inspector Gadget
37. Quiz Call	United Windom	Money Mayhem
55. Ttext Holidays	No information	No information
60. Television X	..programmes start at 11...	..programmes start at 11...

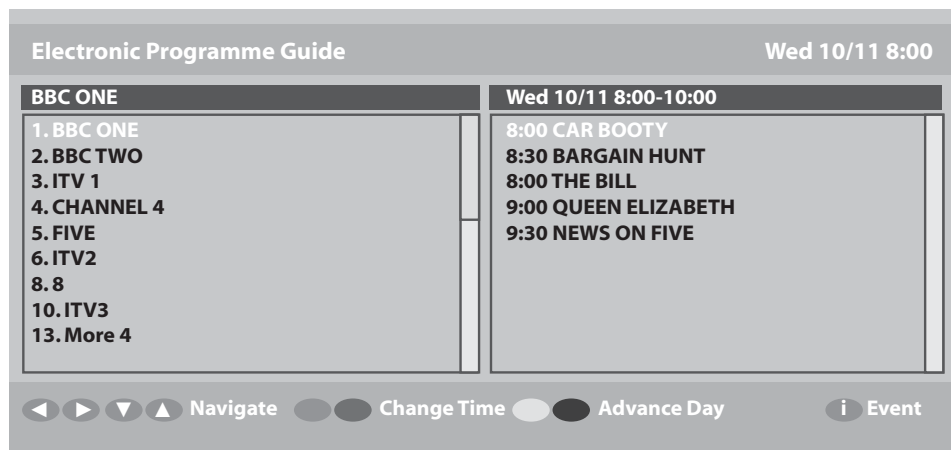
◀ ▶ ▴ ▾ Navigate

● ● Schedule

Select Watch

i Event

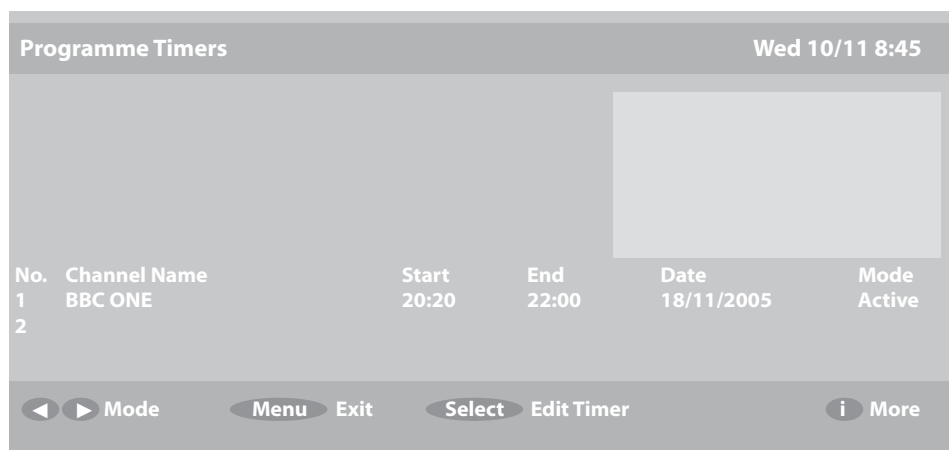
DVB Menu



List Schedule EPG

- You can check program schedule here. Navigate channel by pressing **up/down/right/left** button.
- Press **Yellow/cyan** buttons to change date. **Red/green** buttons are for changing the time.
- Press **Info** key to see detailed information of each program

Timers



- If you want to watch a special program on time without having to use the remote everyday, please setup **Timers**.
- At first, press select key. You will see time setup **OSD**. (See the right)
- You can change channel at **Name**.
- Setting start/end time as you want at **Start / End**.
- Select **Mode (Once, Daily, Weekly)**.
- If a channel is set to change to LOCKed channel, password OSD will be displayed before channel changing.
- To change password, go to SETTING > Configuration > Parental settings (see page 35)

name : 1. BBC ONE
 start : 20:20
 end : 22:00
 date : 18/07/2005
 mode : weekly

DVB Menu

Settings

Select each sub-menu

Configuration

This has 4 sub-menus.

- **Subtitle** on/off (also can control this with remote control **SUB TITLE** button).
- Change **Banner** time : **off - 1 sec - 2sec - 4sec - 8sec**
- You can choose your favourite list (see page 32) on **Favourite Mode**. If it is selected as off, all channel are shown.
- **Change Channels List** : Show all - TV only - RADIO only - TEXT only
- **Parental Setting** enables you to make individual services. DVB MENU and Installation are protected by password. The default password for parental setting is „0000“. To change default password, select „Parental Settings“ using up/down buttons, and press OK/SELECT. Using number buttons enter default password „0000“. Now select „Set Lock Key“ and confirm with OK/SELECT button. Using number buttons enter new password in to „Lock Key“ field and re-enter in „Confirm“ field.

If you have forgot your personal password, you can reset to the default password „0000“ by pressing the key sequence: **RED - GREEN - YELLOW - CYAN**.

Setting

Configuration

Installation

MENU

Exit

SELECT

Select

Configuration	
Subtitle	Off
Banner	4 sec
Favourite Mode	Off
Channel List	Show all
Parental Settings	

◀ ▶ Subtitle ON/OFF

i More

Installation

- **Automatic Search** is the function to scan each channel for services. If you cancel Automatic Search before it is completed, the previous list of services is used, if already stored.

Do you want to start automatic search?
Your previous channel list will be replaced.

Yes

No

DVB Menu

- **Manual Search** is the function to scan for an individual channel.
Enter the **Channel number** to be scanned.
- Signal Quality consists of 5 levels : **none - poor - medium - good - very good**

Manual Search

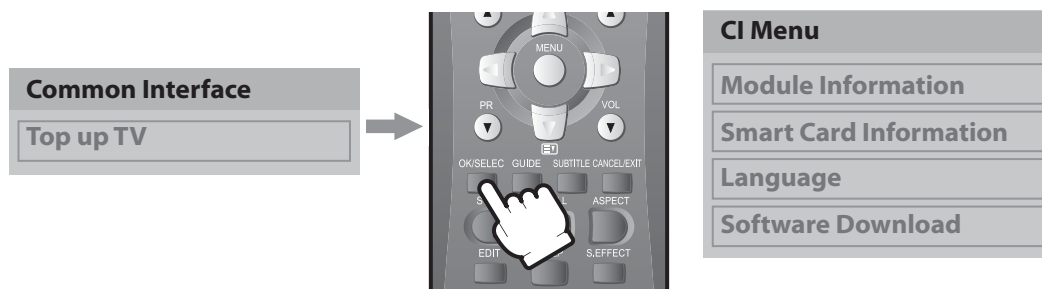
Channel Number

Signal Quality: Very Good

Signal Level:

0 .. 9 Select Channel Select Search Menu Exit i More

Common Interface



- This allows you to upgrade your TV set with additional features including access to extra channels (if available) using a conditional access module (eg. TopUp TV).
- If there is **no CI Card** in the slot, „**No common interface module detected**” appears on the screen.
- When you **insert CI Card**, „**Common interface module inserted**” appears on the screen. Then, you can watch **pay channel**.
- If you **remove CI Card** from the slot, „**Common interface module removed**” appears on the screen, and you can't watch **pay channel** any more until you insert CI card again.

Note : A common interface is available to connect a CAM(conditional access module) and a smartcard. Please contact your service provider to get more information about these modules.

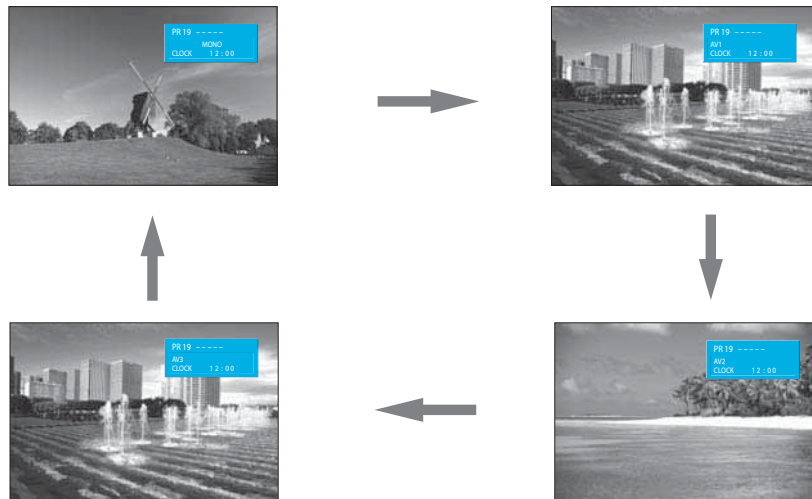
Selection of AV and Multimedia Input Signal

When watching video, Camcorder, DVD, Cable TV with AV

- See page 12 for connection method of Camcorder and Video.
- When pressing "□/⏏" button on the TV set, screen changes as follows:
TV => AV1 => AV2 => AV3/S-Video => PC => HDMI => Component => TV

1. Pressing the "AV" button on the remote controller.

- The screen changes as follows:
TV => AV1 => AV2 => AV3/S-Video => TV



Note :

Cautions in menu setup

- The menu disappears if you do not operate any button for about 25 seconds from the menu.
- In the case of connecting both composite video signal and S-video signal at the AV3 terminal, the S-video signal has priority.
- If sound signal is mono only, connect it to the L-terminal of the sound input terminal.

Selection of AV and Multimedia Input Signal

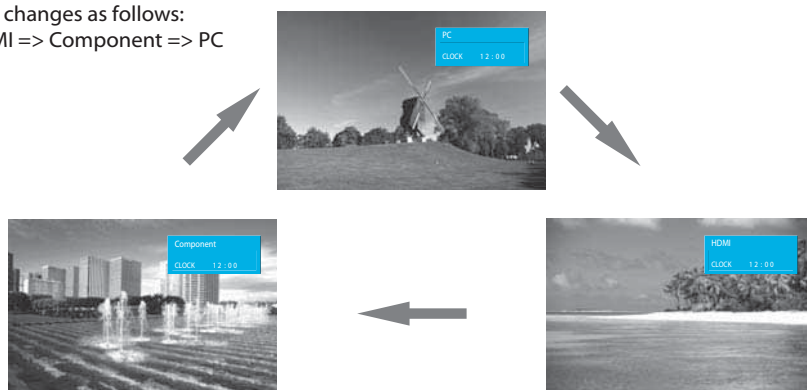


When connecting PC, STB, DVD with Multimedia

1. Pressing the "MULTIMEDIA" button on the remote controller.

• The screen changes as follows:

PC => HDMI => Component => PC



HDMI & PC mode

- For optimum picture quality, use 1360(6)x768 computer or set top box output at a 60Hz refresh rate. Using other formats or refresh rates may result in reduced picture quality.
- If the message 'No signal' appears on the screen, adjust the PC output to a format listed in the Multimedia Input table.

Multimedia Input Format

Resolution	V-freq	HDMI	PC(D-Sub)	Component	Standard
640 x 480	60Hz	o	o	x	
	72Hz	o	o	x	
	75Hz	o	o	x	VESA Standard
800 x 600	60Hz	o	o	x	VESA Standard
	72Hz	o	o	x	VESA Standard
	75Hz	o	o	x	
1024 x 768	60Hz	o	o	x	VESA Standard
	70Hz	o	o	x	VESA Standard
	75Hz	o	o	x	VESA Standard
1360(6) x 768	60Hz	o	o	x	
	75Hz	o	o	x	
720 x 480	60Hz	o	o	o	
720 x 576	50Hz	o	o	o	
1280 x 720	50Hz	o	o	o	
	60Hz	o	o	o	
1920 x 1080i	50Hz	o	x	o	
	60Hz	o	x	o	
720 x 480i	60Hz	x	x	o	
720 x 576i	50Hz	x	x	o	

Note :

- 1280 x 720 mode is commonly used for Component.
- So if this mode is used at PC mode, the screen can be enlarged.

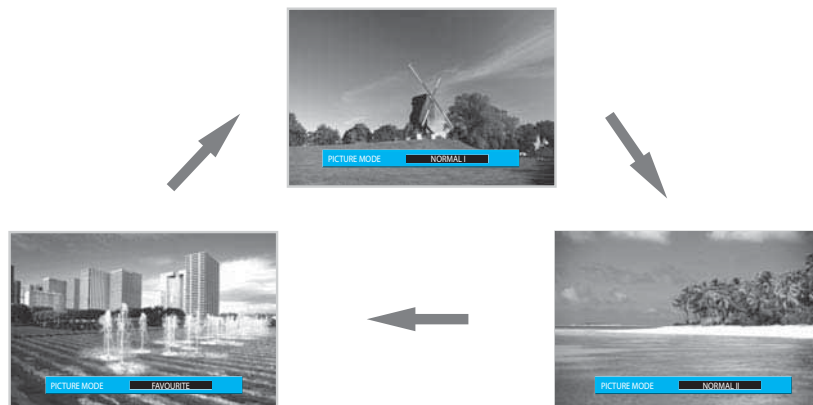
Screen Adjustment

When setting up various screen modes

- The user may select various screens designed for a good picture without adjusting the brightness, contrast or colour individually.

1. Pressing the "PICTURE" button.

- The screen changes as follows:
Normal I => Normal II => Favourite => Normal I
- The screen adjustment status changes as the following screens are displayed sequentially whenever pressing the "PICTURE" button.
- The screen returns to the mode prior to turning power off when you power on again.



Note :

- **Normal I** : For a highly defined image in a normally bright room.
- **Normal II** : Supports softer image than Normal I.
- **Favourite** : Allows the user to customize settings as desired.

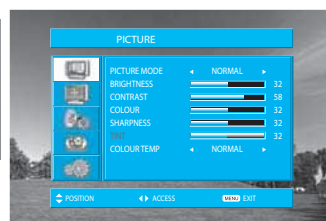
Screen Adjustment

When adjusting the screen to taste

- You can enjoy various screens by adjusting Brightness, Contrast, Colour, Sharpness, etc to the user's taste.

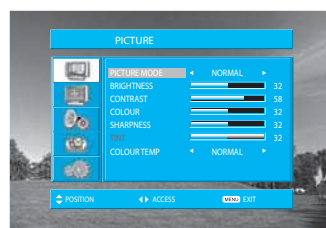
1. Select "PICTURE" by pressing the "MENU" button.

- The menu screen appears as follows.

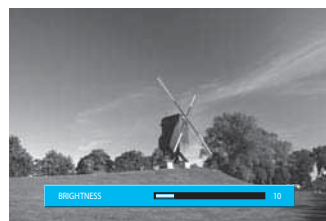


2. Select and adjust each item.

- Move to the PICTURE menu.
- Whenever pressing the "▲/▼" button, you can select Brightness, Contrast, Colour, Sharpness and Colour Temp.



- The screen appears as on the right if pressing the "◀/▶" buttons after selecting items desired to adjust with the "▲/▼" buttons.
- You can adjust all items by pressing the "◀/▶" button.



Note :

- Brightness: Adjusts the whole of screen brighter or darker.
- Contrast: Adjusts difference between brightness and darkness between objects and background on the screen.
- Colour: Adjusts colour saturation.
- Sharpness: Adjusts outline of the screen smoothly or sharply.
- Colour Temp: Changing the tone of colour:
 - Normal:** Normal white
 - Warm :** Reddish white
 - Cool:** Bluish white
- Tint actives when receiving a NTSC signal.
- The adjusted levels are stored automatically in Favourite mode.

Screen Adjustment

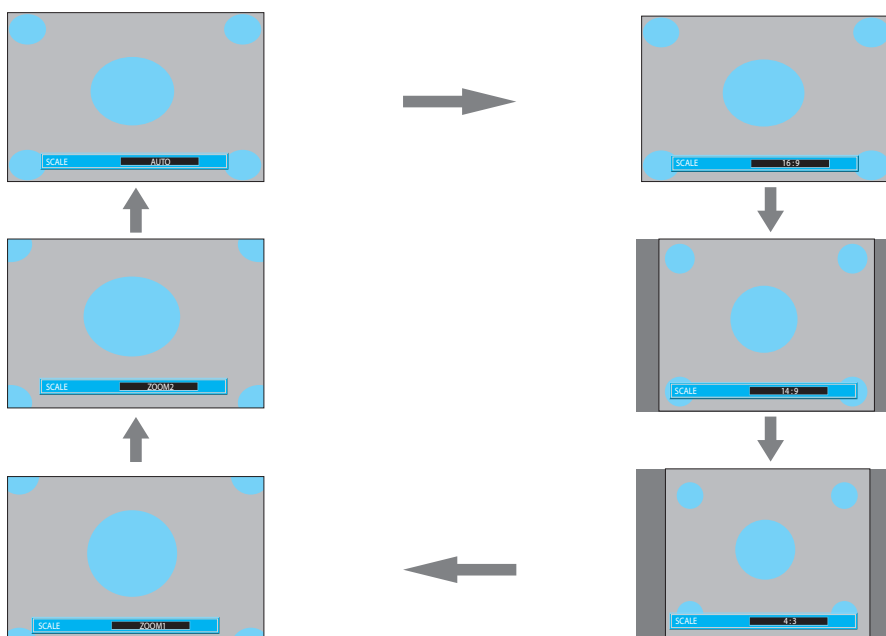
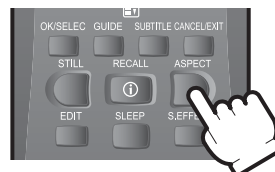
Adjustment of Screen Size in TV and AV mode

- Randomly change the size of the screen.
- The AUTO screen operates when power is first turned on.

1. Pressing the "ASPECT" button on the remote controller.

- The screen changes as follows:

Auto => 16:9 => 14:9 => 4:3 => Zoom 1 => Zoom 2 => Auto



- **Auto** : This mode will display depending on the signal information of a broadcasting station.
- **16:9** : 16:9 will display a true 16:9 (anamorphic) picture with no aspect distortions.
- **14:9** : 14:9 will display a 14:9 picture at its standard 14:9 size without any stretching.
- **4:3** : General TV screen currently broadcasted.
- **Zoom 1** : Screen that vertically enlarges image by 1.33 times bigger than (Normal) image.
- **Zoom 2** : Screen that horizontally enlarges image by 1.33 times bigger than Zoom1 image.

Notices:

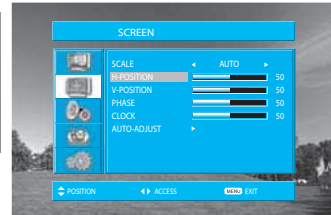
- Only 16:9 and 4:3 mode are available in multimedia(HDMI, PC, Component) mode.
- "WSS" mode like 16:9 and 14:9 is only available with CVBS signal.

Screen Adjustment

Adjustment of the screen in the PC mode

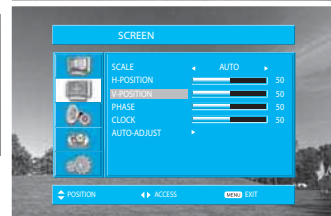
1. Adjustment of the H-Position

- Move to H-Position in the Screen menu.
- Press the "◀/▶" buttons to adjust the horizontal position of displayed image.



2. Adjustment of the V-Position

- Move to V-Position in the Screen menu.
- Press the "◀/▶" buttons to adjust the vertical position of displayed image.



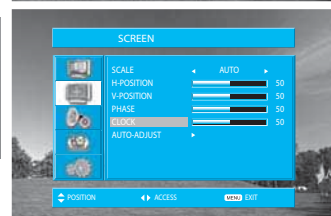
3. Adjustment of the Phase

- Move to Phase in the Screen menu.
- Press the "◀/▶" buttons to adjust the phase to get a clear picture.



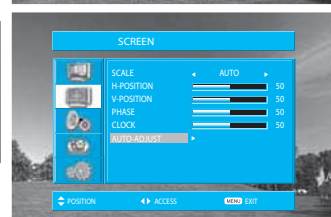
4. Adjustment of the Clock

- Move to Clock in the Screen menu.
- Press the "◀/▶" buttons to adjust the clock to fit the size of the screen.



5. Auto Adjustment

- Move to Auto in the Screen menu.
- Press the "◀/▶" buttons to detect optimal resolution automatically.



Note :

- During the Auto Adjust, you must not alter the screen on the monitor.
- During the moving picture, Auto Adjust is able to incorrectly work. So you must execute Auto Adjust in still image.
- Auto Adjust works incorrectly on a part graphic card or picture.
- When Auto Adjust is not correctly working, you can adjust with H/V position, and phase.

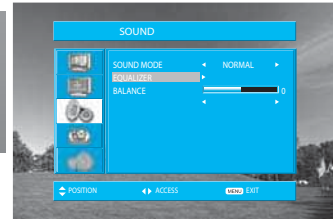
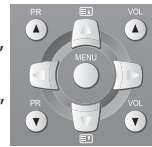
Sound Adjustment

When adjusting sound to taste

- The user can enjoy various sounds by adjusting Sound Mode, Equalizer, Balance and Amp Speaker.

1. To adjust the audio equalizer

- Move to Equalizer in the Sound menu.
- Select and use the relevant frequency by pressing the "▲/▼" button.
- You can adjust the degree of the frequency by using the "◀/▶" button.

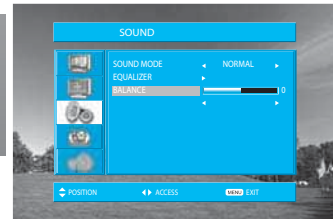


Note :

- Whenever you adjust the audio equalizer, it stores in the Favourite mode.
- Equalizer: High quality sound range adjustment method used for audio product.
120Hz, 500Hz: Low sound range / 1.5KHz, 5KHz: Middle sound range / 10KHz: High sound range

2. Select Balance Mode

- Move to Balance in the Sound menu.
- Select "Balance" by pressing "◀/▶" button, then the sound balance of left and right speaker is Adjusted.



3. Select S.EFFECT Mode

- Select either ON or OFF using „S.EFFECT“ button on the remote control.

Note :

- 3D PANORAMA: This function generates virtual surround sound from the left and right speaker by developing the existing surround system function.

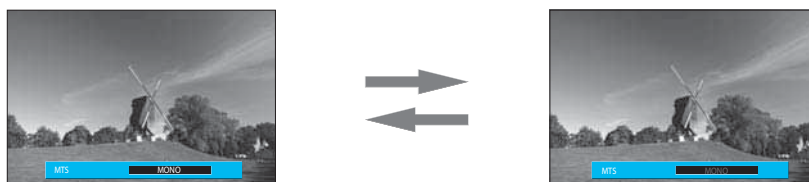


Sound Adjustment

Multi-Sound and Stereo

1. Mono Sound Selection

- During Stereo sound reception if the stereo is weak, you can switch to MONO by pressing the "D/CD/I/II" button. Then the colour of "MONO" character will change to Red. In Mono reception the depth of sound is improved.
- To switch back to stereo, press the "D/CD/I/II" button again.

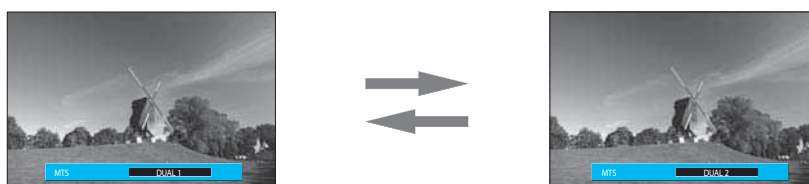


Note :

- "D/CD/I/II" only works in RF mode.

2. Adjustment of Bilingual sound

- In bilingual broadcast reception, you can switch from Dual 1 to Dual 2 by pressing the "D/CD/I/II" button repeatedly.

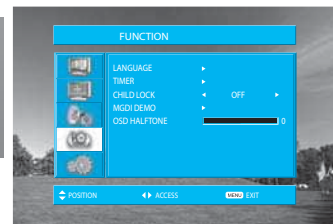


Selection of Language

Selection of Language

When you first turn on the TV set, the window of language selection is displayed automatically.

1. Press the "MENU" button and select "Function"



2. Select "Language" by pressing "◀/▶" button.



3. Select your desired language by pressing the "▲/▼" button. Then, it will set automatically.

- In Continental Set:

The language changes as follows.

English => Francais => Deutsch => Italiano => Espanol => Nederland => Portugues => Svenska => Norsk => Suomi => Polski => Romana => Magyar => Czech => Russian => Bulgarian;

- In UK Set:

The language changes as follows.

English => Welsh => Gaelic



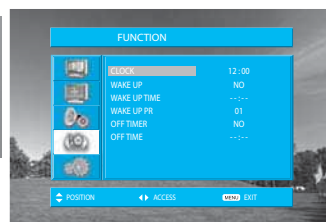
Adjustment of Time

Adjustment of Time

- You must previously adjust current time in order to reserve Automatic On/Off.

1. Manual clock setting

- Move to Timer in the Function menu.
- To go to the Clock, press the "▶" button.
- Place the cursor to Hour / Minute with "◀/▶" buttons.
- Set the Hour / Minute with the "▲/▼" buttons.
- Place the cursor to Clock with "◀/▶" buttons and then press the "MENU" button to complete.

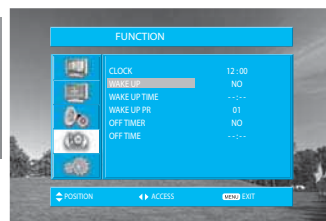


Note :

- Manually set clock is not memorized any more when TV is AC off.

2. Setting the Wake up time / Program

- Move to Timer in the Function menu.
- To go to the Wake Up, press the "▲/▼" button.
- Select the Wake Up to "Yes".
- Set the Wake up time and Program in the same way to the above for the Clock. The set will turn on at the at selected time.



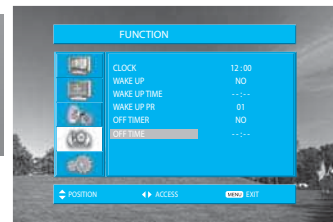
Note :

- Confirm the Time is set. The Wake up time is only available when the Time is set.
- If adjusted once, the On-time continues to operate everyday unless canceling setup or you turn the AC power off.
- It is a convenient method to wake you up in the morning.

Adjustment of Time

3. Set up of Off Time

- Move to Timer in the Function menu.
- To go to the Off Timer, press the “▲/▼” button.
- Select Off Timer to “Yes”
- Set the Off time in the same way as above for the Clock.
The set will turn off at the selected time.



Note :

- This function is very convenient since the TV automatically turns off at the fixed time

4. Sleep Mode

- By pressing the “SLEEP” button on the remote control repeatedly, you can select one of the following settings:
Sleep Timer: Off => 15 => 30 => 45 => 60 => 75 => 90 =>
105 => 120 => Off
- The set will turn off after the time you select.

Note :

- If an active signal is not present for about 10 minutes, the set will automatically turn to ST-BY mode.



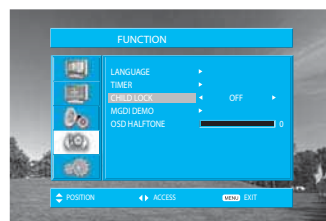
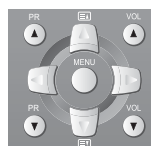
Other Functions

1. Setup of Child Lock

- Move to Child Lock in the Function menu.
- Select Child Lock to "On" using the "►" button

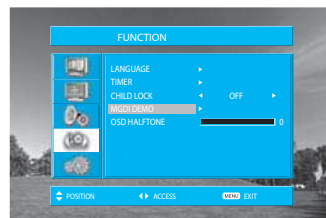
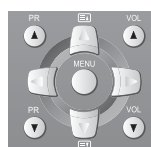
Note :

- This prevents the use of the TV set without the remote control.
- If TV set is set up Child Lock, LED will cycle through red/off for the ST-BY mode.
- If the Child Lock is "On", then the set can only be switched back on using the remote control.



2. Setup of MGDI Demo

- Move to MGDI Demo in the Function menu.
- Press the "►" button, and then screen changes as below.
- Press the "MENU" button, and then return to origin screen.



Note :

- One can move on MGDI DEMO menu directly using „MGDI“ button on the remote control.



3. OSD Halftone


- Move to OSD Halftone in the Function menu.
- Press the "►" button, and then the OSD's transparency changes from 0 to 100 by 25 (5 steps).
- Press the „MENU“ button, and then return to origin screen.



Teletext

Teletext

SWITCHING TELETEXT ON/OFF

Press the "TEXT" button ().

The index page or the page viewed last will appear.

Press the "TEXT" button again to return to the TV mode.

NOTE: Teletext works only in TV/AV mode.

COLOUR BUTTONS IN TOP/FLOF TELETEXT

A red, green, yellow and blue field is shown at the bottom of the screen.

If TOP or FLOF Teletext is transmitted by the station, pressing the corresponding colour button R,G,Y,B on the remote controller, enables you to select the desired page easily.


SELECTING PAGES

The "NUMBER" buttons are used to enter a page number.

The selected page number appears at the top of the screen and the page appears after a short time.


The "▲/▼" buttons increase or decrease the current page number by 1.

INDEX PAGE

You can switch directly to the programme preview(with TOP text) or the overview page of the station you are currently viewing by pressing the "INDEX" button ().


PAGE HOLD

Several sub pages can be combined under a page number and are scrolled at an interval determined by the television station. The presence of sub pages is indicated by, for example, 3/6 beneath the time, which means that you are looking at the 3rd page of a total of 6 pages.


If you want to look at a subpage for a longer period of time, press the "HOLD" button ().

The HOLD symbol appears and the contents of the subpage shown are kept on the screen and no longer updated or switched to other subpages. Pressing the "HOLD" button again, the current subpage appears.

CALLING UP SUBPAGE DIRECTLY


Pressing the "S-CODE" button (), " - - - - " appears.

Enter the subpage number that you want to call up with the "NUMBER" button, for example, the 2nd page, sequence 0002. The desired subpage will eventually be displayed on the screen and holds it there.

Meanwhile whilst you are waiting, it is possible to go back to the TV picture by pressing the "T.CANCEL" button () on the remote and after a while, press the "T.CANCEL" button again to revert back to the saved Teletext sub page.

WATCHING TV DURING TELETEXT MODE

Some pages are continually updated, for example, stock market reports, sports announcements, and the latest news.


If you want to watch television and stay informed at the same time, press "T.CANCEL" button ().

The regular programme is still visible and the updated Teletext page number appears at the top of the screen.

Pressing the "T.CANCEL" button again, the Teletext page appears with the updated information.

REVEAL ANSWER

This function can be used on certain pages to reveal the solution of riddles.

Press the "REVEAL" button () to reveal a hidden answer and press again to hide it.

DOUBLING CHARACTER SIZE






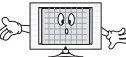


Repeatedly pressing the "SIZE" button () doubles the character size in the following order:

Upper half of the page => Lower half of the page => Normal size => Upper half of the page

Troubleshooting


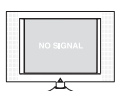


Symptoms and Solutions

Please check the following list prior to calling Daewoo Electronics Service Centre for assistance.

Symptom	Check items
Neither picture nor sound 	<ul style="list-style-type: none"> - Check the contact of sockets is all right. - Check the TV main power is on.
Picture is OK but no sound 	<ul style="list-style-type: none"> - Check the Volume control is not set to minimum or mute.
Sound is OK, but no colour. 	<ul style="list-style-type: none"> - Check the colour control and adjust it properly. - Check the program is in colour and not in black & white.
The picture has image. 	<ul style="list-style-type: none"> - Check the antenna is installed correctly and if not, adjust the antenna toward the broadcasting station.
Picture has "snow noise" 	<ul style="list-style-type: none"> - Check the antenna or its connection is correct and if not, correct the antenna fault or connection cable fault. - Check if car traffic or neon sign disturbs the sound effect.
Stripes on picture. 	<ul style="list-style-type: none"> - Check the susceptible interference by other electronic devices such as radio and television and keep magnetic or electronic devices away from the TV.
Bad stereo or Dual sound. 	<ul style="list-style-type: none"> - Long distance from the station or other radio waves can generate bad sound reception. If so, change the mode to Mono.
Remote control does not work. 	<ul style="list-style-type: none"> - Check if the batteries in the Remote control are dead. - Check if any object between IR sensor of the TV and the Remote control does not obstruct.

Troubleshooting

In PC mode

Symptom	Check items
"UNSUPPORTED" appears on the screen 	- Check the resolution and frequency of your PC. Then, adjust them to optimum condition for LCD TV. - Refer to the table of PC mode input format (If registered resolution and frequency on the table not listed then no picture will be displayed.)
"NO SIGNAL" appears on the screen. 	- Ensure that the signal cable is firmly connected to PC and TV.
Image is not clear. 	- Adjust the PHASE control.
Image is not centered. 	- Adjust the H-POSITION and V-POSITION control.

• AFTER SALES SERVICE

Do not hesitate to contact your retailer or service agent if a change in the performance of your product indicates that a faulty condition may be present.

Standard of Product

Screen Size	26"(66Cm)	32"(81Cm)	37"(94Cm)
Aspect Ratio	16:9		
Resolution	1366 x 768 (WXGA)		
Pixel Pitch	0.4215 mm	0.51075 mm	0.600 mm
Contrast Ratio	4000:1	5000:1	5000:1
Dimension (W x H x D)	676 x 530 x 230 mm	806 x 626.5 x 250 mm	940 x 720 x 328.5 mm
Power Consumption	Remarked in the back of product		
TV System	PAL B/G, D/K, I/I, SECAM B/G, D/K, L/L, NTSC(AV)		
Power Source	220 -240V~, 50/60Hz		

Owing to our policy of continuous improvement, specifications may change.



