



S/M No. :

Integration

Exploded View & Part List

**Product : Wahsing Machine
Twin Tub**

- MODEL :**
- * DWM-160,170C
 - * DWM-161/2,171/2C
 - * DW-2500,2510,2520,
 - * 2530,2540(P)
 - * DWM-3600,3610,3620(P)
 - * DWM-500M,501M
 - * DW-5014,5024,5034(P)
 - * DWM-7510
 - * DWM-800C(P)
 - * _____
 - * _____
 - * _____
 - * _____
 - * _____
 - * _____
 - * _____
 - * _____
 - * _____
 - * _____

✓ Caution

: In this Manual, some parts can be changed for improving, their performance without notice in the parts list. So, if you need the latest parts information, please refer to PPL(Parts Price List) in Service Information Center(<http://svc.dwe.co.kr>).

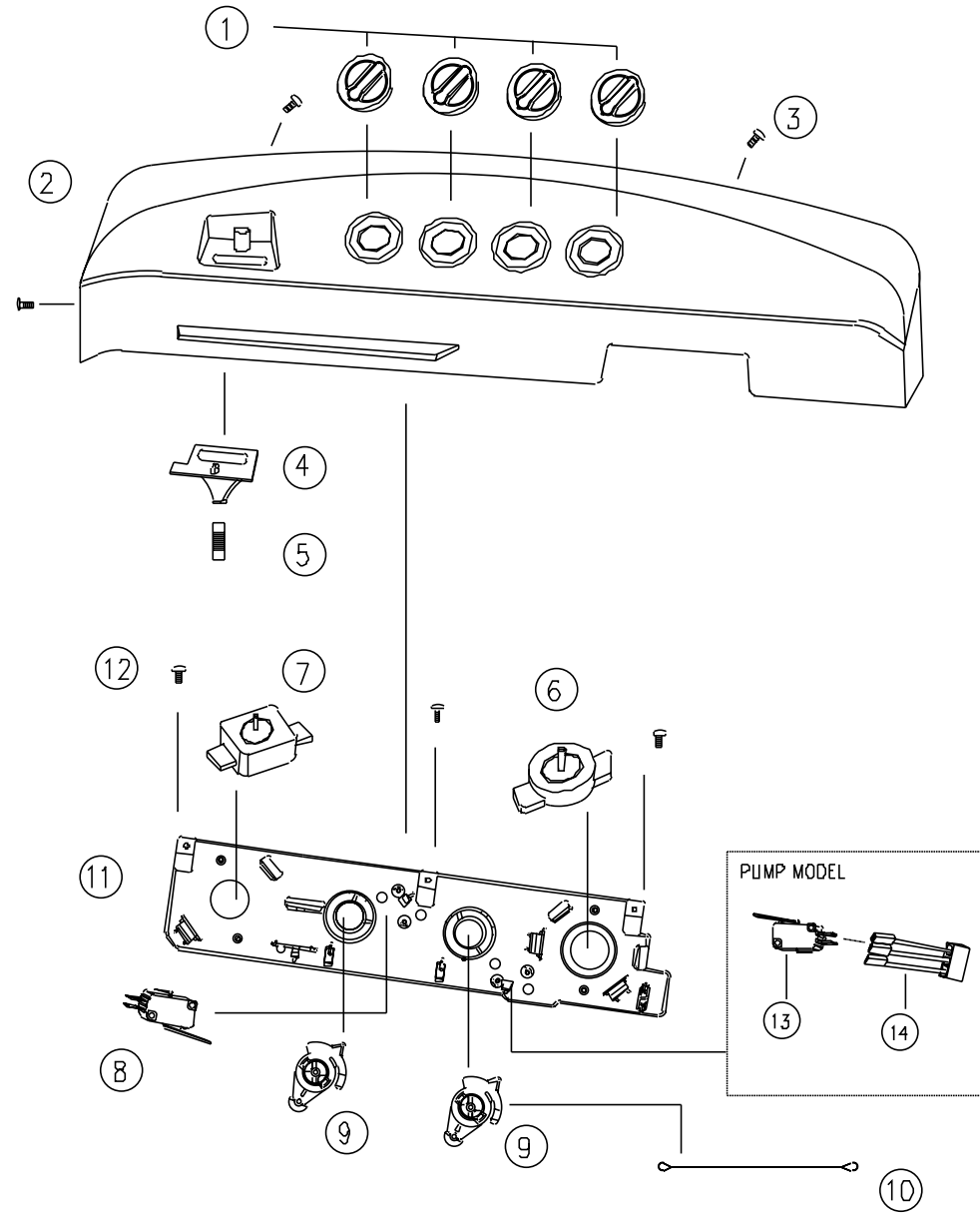
DAEWOO ELECTRONICS CO., LTD.

<http://svc.dwe.co.kr>

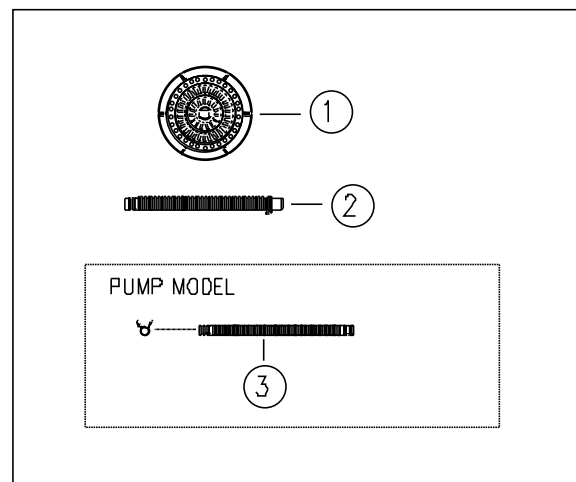
Oct. 2002

1. EXPLODED VIEW

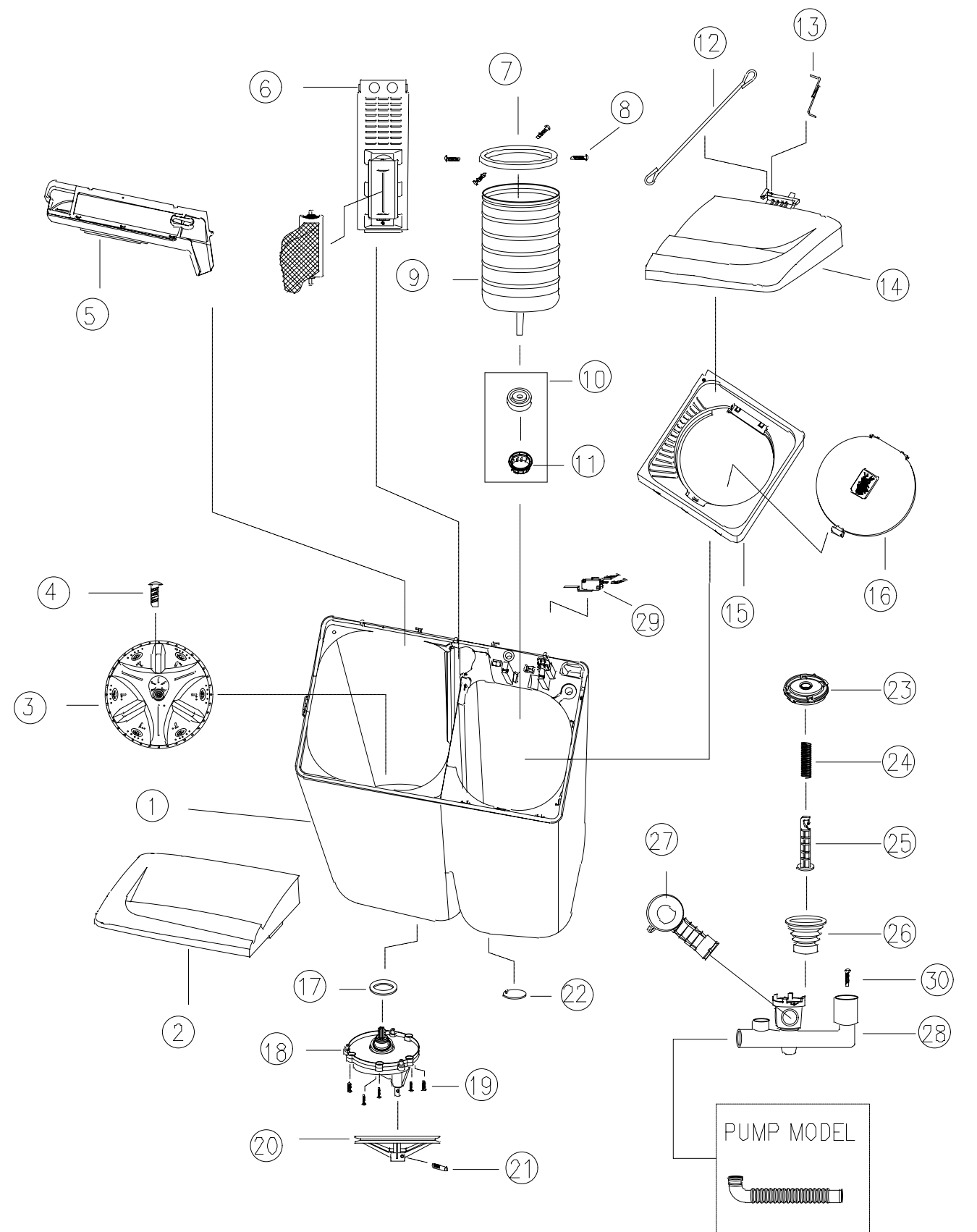
ASS'Y PANEL BACK



ACCESSORY ASS'Y

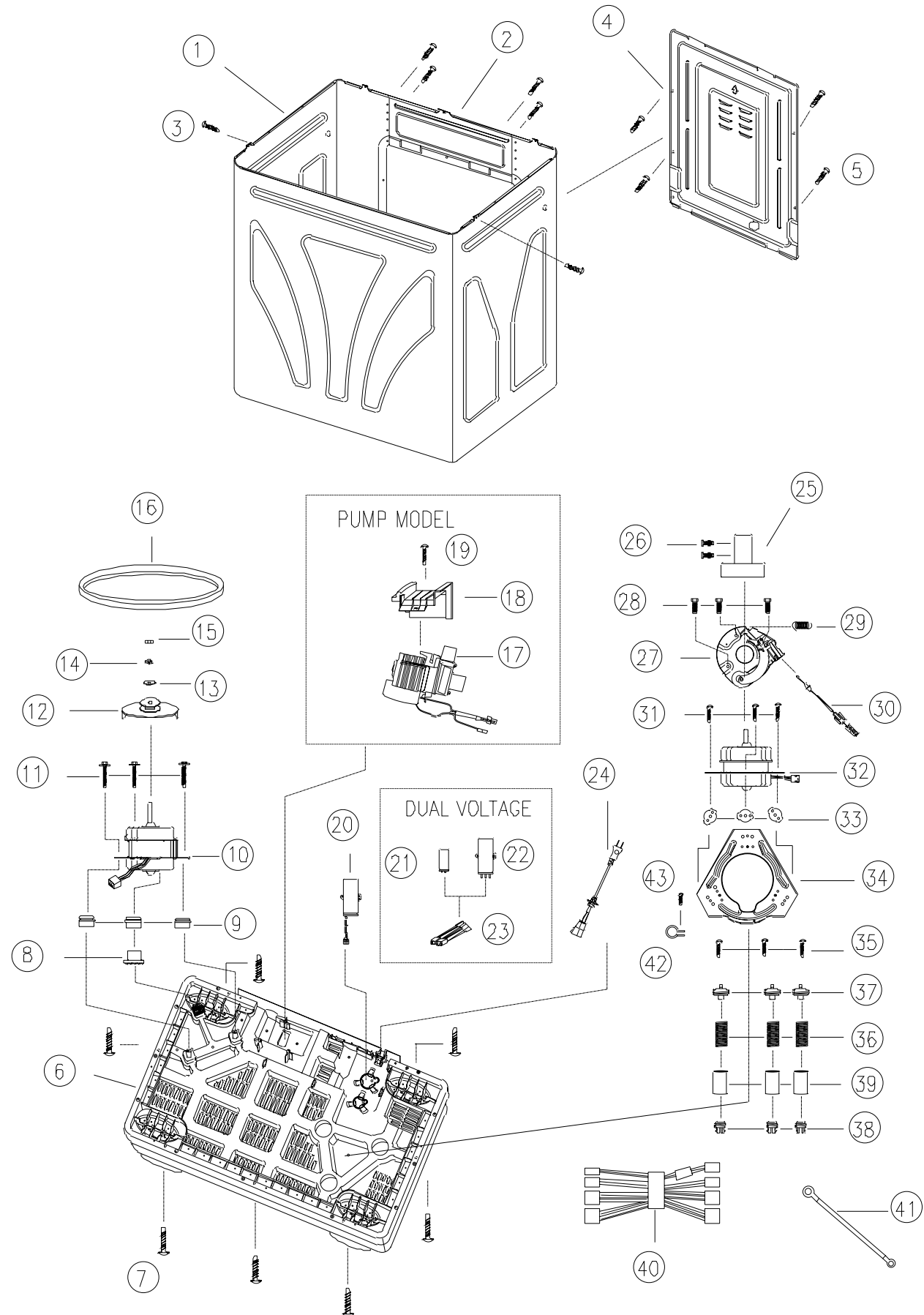


ASS'Y TUB



1_2. EXPLODED VIEW

ASS'Y MAIN



2. PARTS LIST

1) DWM0160C_170C

ass'y panel (DWM-160C's)

NO.	PART NAME	PART CORD	SPECIFICATION	Q'TY	REMARKS
1	KNOB	3613403800	DWM-160C, ABS	4.0	
2	PANEL B	3614239000	HIPS	1.0	
3	SCREW TAPPING	7122401411	T2S TRS 4X14 MFZN	3.0	
4	LEVER W.S SELECT	3613702300	PP	1.0	
5	HOSE SPRAY	3613201201	PE-LD	1.0	
6	TIMER SPIN	3619911200	S-160CA	1.0	
7	TIMER WASH	3619911100	S-DT15NT	1.0	OPTION
	TIMER WASH	3619911300	S-K16NT	1.0	OPTION
8	SWITCH DRAIN	3619043700	VP531A-2H,250VAC/15A	1.0	
9	LEVER CONTROL	3613701400	POM	2.0	
10	LINK VALVE	3617804200	PP BAND W6 L=784	1.0	
11	BRACKET PANEL	3610606200	PP	1.0	
12	SCREW TAPPING	7122401411	T2S TRS 4X14 MFZN	3.0	
13	SWITCH DRAIN	3619045300	VO, SZM-V15-18FA-91	1.0	PUMP MODEL
14	HARNESS DRAIN	3612790600	160CP SW DRAIN L=1100	1.0	PUMP MODEL

ACCESSORY ASS'Y (DWM-160C)

NO.	PART NAME	PART CORD	SPECIFICATION	Q'TY	REMARKS
1	COVER SAFETY	3611419900	LDPE(DIA:286)	1.0	
2	HOSE DRAIN O AS	3613222910	1100MM, HANGER, NON CLAMP	1.0	NON PUMP
3	HOSE DRAIN O AS	3613218800	LD-PE/EVA L=1600 PUMP	1.0	PUMP MODEL

ass'y tub

NO.	PART NAME	PART CORD	SPECIFICATION	Q'TY	REMARKS
1	TUB	3618819000	PP	1.0	
2	DOOR WASH	3611799600	HIPS	1.0	
3	PULSATOR AS	3619706800	DWM-160C	1.0	
4	SPECIAL SCREW	3616002901	SUS 304(NON SLOCK)	1.0	
5	BASE WATER SUPPLY	3610390900	PP	1.0	
6	FILTER OVERFLOW AS	3611903800	WITH FILTER AS	2.0	
7	BALANCER AS	3616105800	DWM-160C	1.0	
8	SCREW TAPPING	7122401211	T2S TRS 4*12 MFZN	4.0	
9	BASKET SPIN	3619103600	PP(J-360A)	1.0	
10	BELLOWS	3616402000	NBR	1.0	
11	FIXTURE BELLOWS	3612005800	PP	1.0	
12	LINK BRAKE	3617804300	PP BAND W6 L=564	1.0	
13	SPRING COVER	3615108810	HSW3	1.0	
14	DOOR SPIN	3611799500	HIPS	1.0	
15	PLATE T	3614525200	PP	1.0	
16	COVER INNER	3611419700	PP	1.0	
17	RING O	4506H05050	CR	1.0	
18	GEAR HOUSING ASS'Y	3617306201	3.3:1	1.0	DWM-160C
		3617309100	6:1	1.0	DWM-170C
19	SCREW TAPPING	7122502011	T2S TRS 5X20 MFZN	5.0	
20	PULLEY PULSATOR	3618432500	FRPP	1.0	DWM-160C
		3618432600	FRPP	1.0	DWM-170C
21	SPECIAL BOLT	3616008400	M6 SIDE-FIXING	1.0	
22	PROTECTOR F.B	3618303500	NBR	1.0	
23	VALVE CAP	4505F06013	PE-HD	1.0	
24	SPRING VALVE	4505C06022	SWC WR 1.0D	1.0	
25	ROD VALVE	3618504000	PP	1.0	
26	BELLOWS VALVE	4505C06041	NBR	1.0	
27	INLET JOINT	3617504100	PP	1.0	
28	CASE VALVE	3611131600	PP	1.0	
29	COVER S/W AS	4507K44031	15A 220VAC 1006FD	1.0	
30	SCREW TAPPING	7122502011	T2S TRS 4X14 MFZN	1.0	

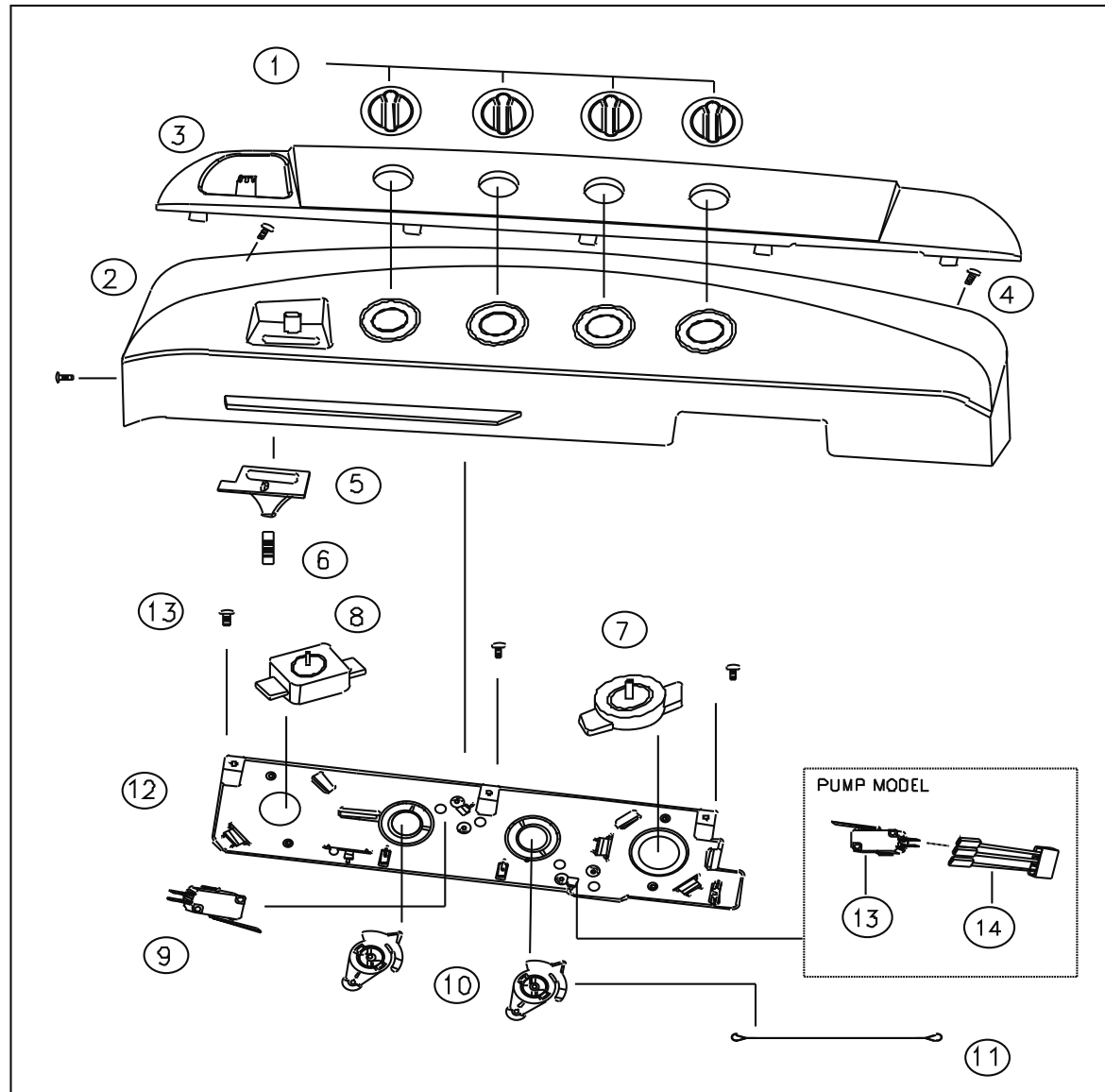
✓ **Caution:** In this Service Manual, some parts can be changed for improving, their performance without notice in the parts list. So, if you need the latest parts information, please refer to PPL(Parts Price List) in Service information Center(<http://svc.dwe.co.kr>)

ass'y main

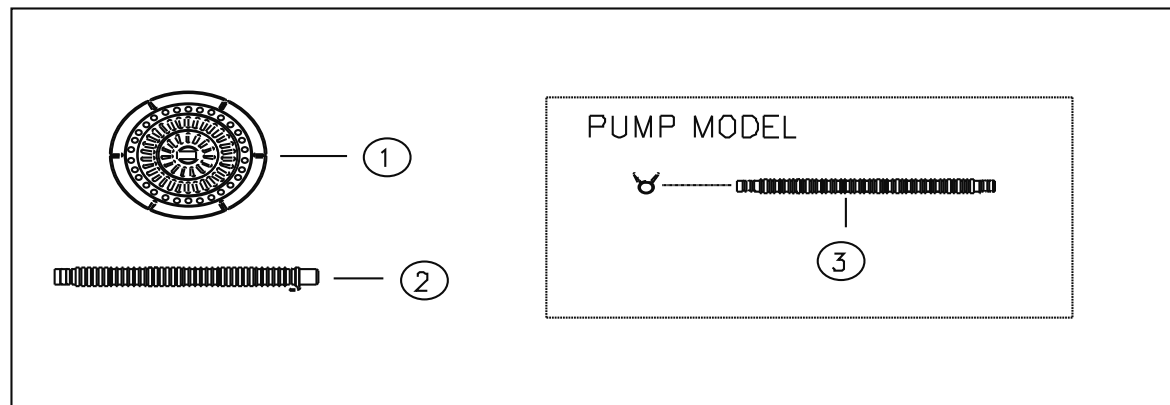
NO.	PART NAME	PART CORD	SPECIFICATION	Q'OTY	REMARKS
1	ASSY CABINET	PRCACA6200	DWM-160C 0.6T	1.0	
2	PLATE UPPER	3614525100	SGCC 0.6T	1.0	
3	SCREW TAPPING	7122401011	T2S TRS 4*10 MFZN	4.0	
4	COVER BACK	3611419800	SECC 0.4T	1.0	
5	SCREW TAPPING	7112400811	T1 TRS 4*8 MFZN	4.0	
6	BASE UNDER	3610390800	PP	1.0	
7	SCREW TAPPING	7122401011	T2S TRS 4*10 MFZN	7.0	
8	CUSHION SPOT	450M712010	PP	1.0	
9	CUSHION MOTOR	450M712020	NR	3.0	
10	MOTOR WASH	3618961900	220-240V/50HZ,W1S35VD060	1.0	N(P), M(P)
		3618961600	110V/60HZ,W1S35ED060	1.0	T(P)
		3618961800	220V/60HZ,W1S35UD060	1.0	L
		3618962000	W1S35GD060	1.0	D ,S
11	SPECIAL SCREW	3616003100	M5X35 WASHER	3.0	
12	PULLEY MOTOR AS	3618431700	PRESS(SGCC1.2T,D31),2.1MM	1.0	50HZ
		3618431600	PRESS(SGCC1.2T,D24),4.3MM	1.0	60HZ
13	WASHER PLAIN	7400108411	PW-1-8.4 MFZN	1.0	
14	WASHER SPRING	7401008011	SW-8 MFZN	1.0	
15	NUT HEX	7392800011	M8*P1.25 MFZN	1.0	
16	BELT V	450M700020	M-32	1.0	DWM-160C
		3616590700	M-24	1.0	DWM-170C
17	UNIT DRAIN PUMP AS	3618964800	AC 220-240V, 50HZ,PLASET	1.0	NP, MP
		3618964900	AC 110V, 60HZ,PLASET	1.0	TP
18	FIXTURE PUMP	3612005700	PP	1.0	
19	SCREW TAPPING	7112402011	T1 TRS 4X20 MFZN	1.0	
20	UNIT CAPACITOR	3618948200	9.7/5.2 400/440 CON-4P	1.0	L,N(P),M(P)
		3618948600	45.6/25 200/200 CON-4P	1.0	T(P)
21	CAPACITOR WASH	4505E11000	25+25UF	1.0	D, DUAL
		4509C11020	200V 20.8UF*2	1.0	S, DUAL
22	CAPACITOR SPIN	4509C11010	MF CAPACITOR 200V 20.8MF	1.0	D ,S,DUAL
23	HARNESS CONDENSER	3612706710	CONN A,B	1.0	DUAL
24	CORD POWER AS	3611332100	T VACTFK 2*0.75 2.3M GY	1.0	
		3611331700	A VACTFK 2*0.75 2.3M GY	1.0	
		3611331310	VCTF 3*0.75 2.3M GY	1.0	
		3611331630	H05VV-F 3*0.75 WH	1.0	
		3611331650	H05VV-F 3*0.75 BK	1.0	
		3611331110	VCTF 3*0.75 2.3M GY	1.0	
		3611331810	H05VV-F 3*0.75 2.3M BK	1.0	
		3611332100	VCTFK 2*0.75 2.3M GY	1.0	
		3611331930	C SJT 3*18AWG 2.3M GY	1.0	
		3611331700	A VCTFK 2*0.75 2.3M GY	1.0	
3611331700	FH05VV 3*0.75 2.3M BK	1.0			
25	COUPLING DRUM AS	3617002100	DWM-160C	1.0	
26	SPECIAL BOLT AS	3616008000	6B-1-M8X12	2.0	
27	BRAKE FIX PLT AS	4505C54000	2-WAY	1.0	
28	BOLT HEX	7341500811	6B-1-5X8 MFZN	3.0	
29	SPRING BRAKE	4507K53010	SWC D1.0 ZN8-C	1.0	
30	ASS'Y BRAKE WIRE	3619201702	SUS WIRE+PE L260	1.0	
31	BOLT HEX	7341501611	6B-1-5X16 HS MFZN	3.0	
32	UNIT SPIN MOTOR	3618949601	110V 60HZ W1D35EF001	1.0	T(P)
		3618949201	220V 60HZ W1D35UF001	1.0	L
		3618949401	220-240V 50HZ W1D35VF001	1.0	N(P), M(P)
		3618950101	W1D35FF002 110/220V 50HZ	1.0	D , DUAL
		3618950001	W1D35LF002 120/240V 60HZ	1.0	S , DUAL
33	CUSHION MOTOR SPIN	3611556300	PP	3.0	
34	BRACKET MOTOR SPIN	3610606100	SPG 1.6T	1.0	
35	SCREW TAPPING	7122502511	T2 TRS 5X25 MFZN	3.0	
36	SPRING CUSHION	3615112700	SWC D=3.2	1.0	
37	STOPPER	4506H14020	PE - HD	1.0	
38	STOPPER LOWER	3615200800	PP	1.0	
39	RUBBER DAMPING	4506H14030	NBR	1.0	
40	HARNESS ASS'Y	3612757300	7510	1.0	PUMP MODEL
		3612757220	800C	1.0	N,M,T ,L
		3612756301	7510	1.0	D ,S
41	HARNESS EARTH	3612757810	UL1015 AWG18 490	1.0	
42	CABLE CLAMP	3611202610	NYLON66 DA-5N	1.0	
43	TAPTITE SCREW	7272400811	TT3 TRS 4*8 MFZN	1.0	

1. EXPLODED VIEW

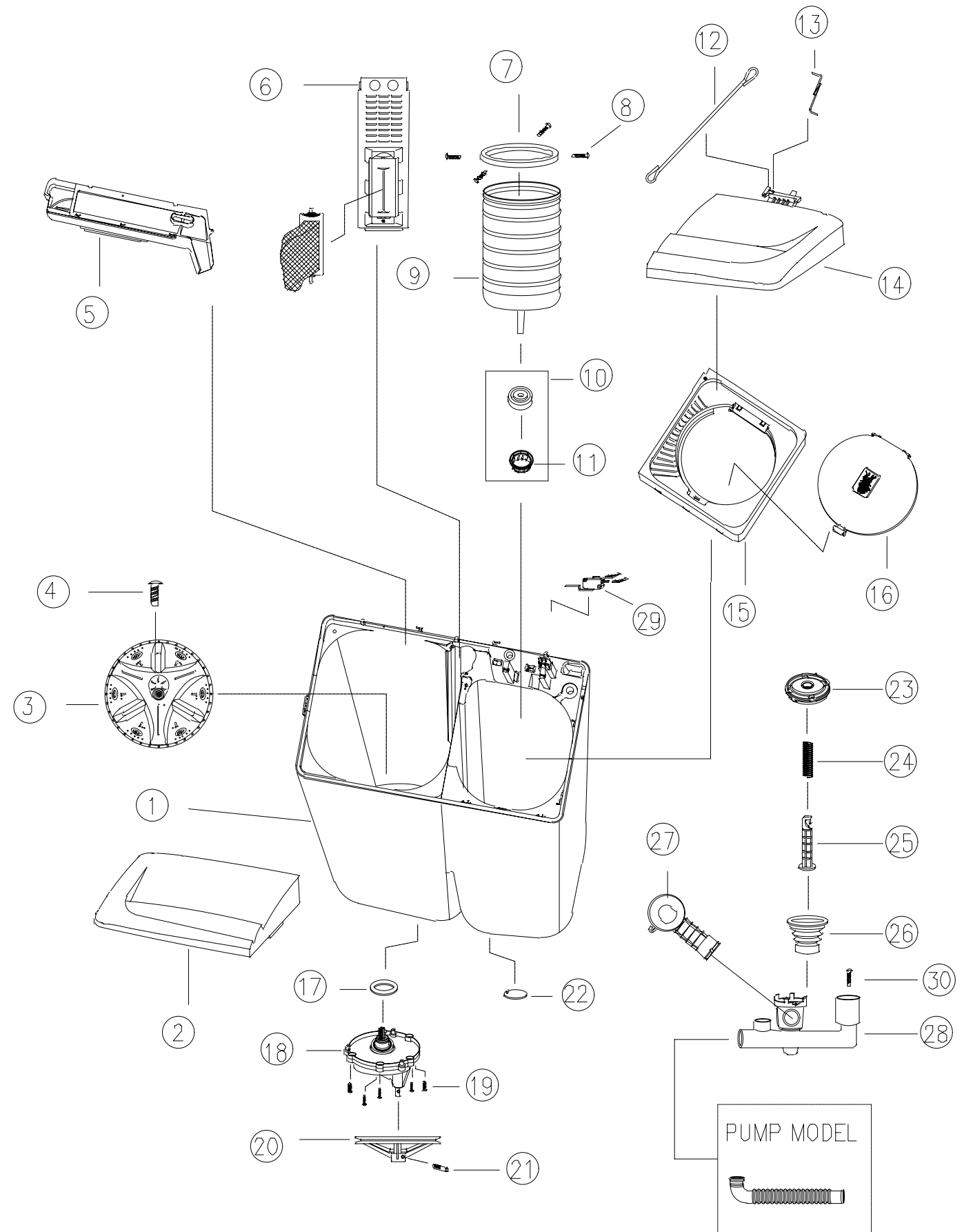
ASS'Y PANEL BACK



ACCESSORY ASS'Y

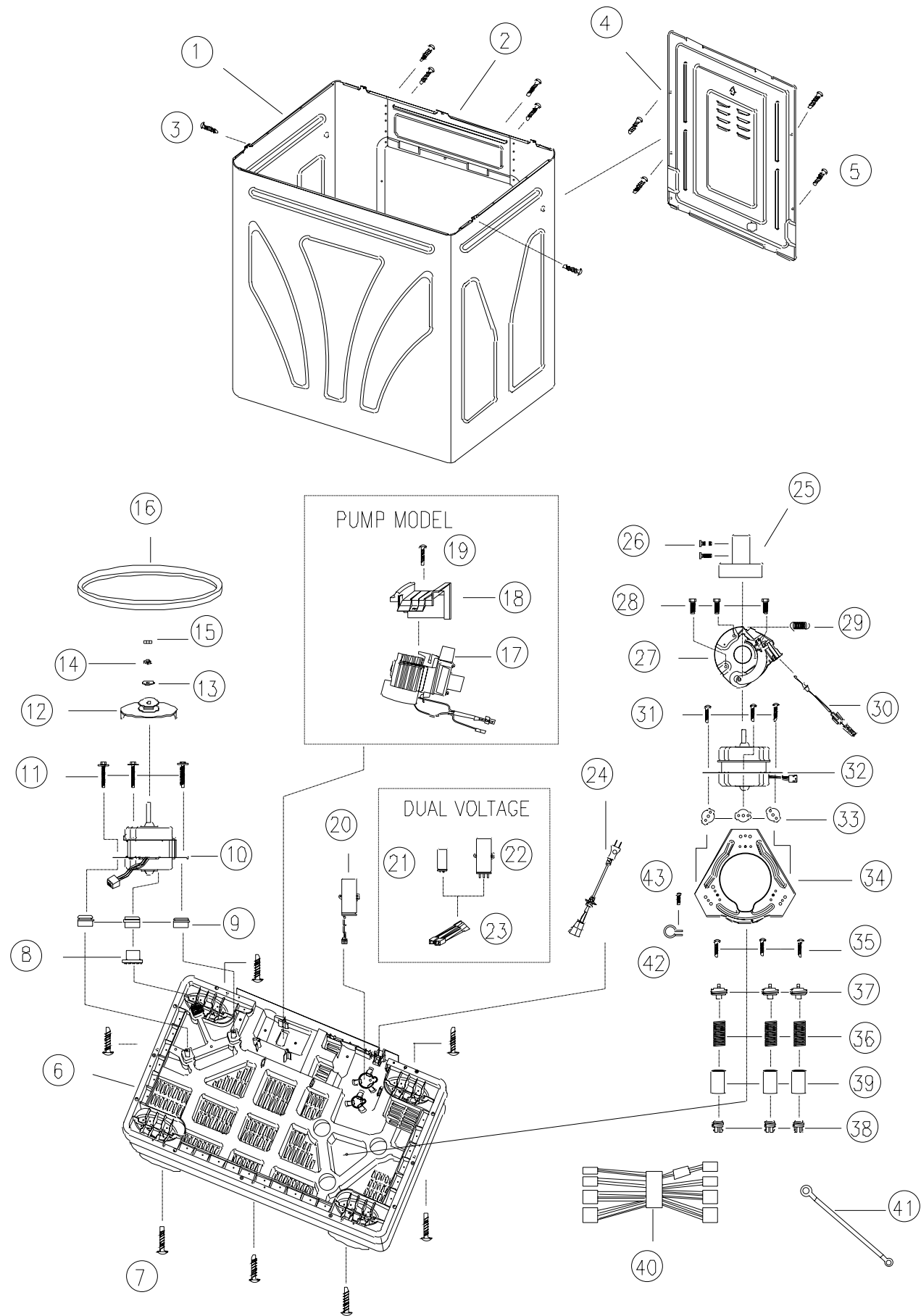


ASS'Y TUB



1_2. EXPLODED VIEW

ASS'Y MAIN



2. PARTS LIST

1) DWM-161.2 / 171.2C

PANNEL ASS'Y

NO.	PART NAME	PART CODE	DESCRIPTION	QTTY	REMARKS
1	KNOB	3613403800	DWM-160C, ABS	4.0	
		3613404000	ABS	4.0	161C/162C/171C/172C
2	PANEL B	3614239000	HIPS	1.0	160C/170C
		3614274300	HIPS	1.0	161C/162C/171C/172C
3	DECORATOR PANEL	3611621800	ABS	1.0	161C/171C
		3611621810	ABS	1.0	162C/172C
4	SCREW TAPPING	7122401411	T2S TRS 4X14 MFZN	3.0	
5	LEVER W.S SELECT	3613702300	PP	1.0	
6	HOSE SPRAY	3613201201	PE-LD	1.0	
7	TIMER SPIN	3619911200	S-160CA	1.0	
8	TIMER WASH	3619911100	S-DT15NT	1.0	OPTION
		3619911300	S-K16NT	1.0	OPTION
9	SWITCH DRAIN	3619043700	VP531A-2H,250VAC/15A	1.0	
10	LEVER CONTROL	3613701400	POM	2.0	
11	LINK VALVE	3617804200	PP BAND W6 L=784	1.0	
12	BRACKET PANEL	3610606200	PP	1.0	
13	SCREW TAPPING	7122401411	T2S TRS 4X14 MFZN	3.0	
14	SWITCH DRAIN	3619045300	VO, SZM-V15-18FA-91	1.0	PUMP MODEL
15	HARNES DRAIN	3612790600	160CP.SW DRAIN L=1100	1.0	PUMP MODEL

ACCESSORY ASS'Y

NO.	PART NAME	PART CODE	DESCRIPTION	QTTY	REMARKS
1	COVER SAFETY	3611419900	LDPE(DIA:286)	1.0	
2	HOSE DRAIN O AS	3613224310	820MM, HANGER, NON CLAMP	1.0	NON PUMP
3	HOSE DRAIN O AS	3613218800	LD-PE/EVA L=1600 PUMP	1.0	PUMP MODEL

✓ **Caution:** In this Service Manual, some parts can be changed for improving, their performance without notice in the parts list. So, if you need the latest parts information, please refer to PPL(Parts Price List) in Service information Center(<http://svc.dwe.co.kr>)

ASSY TUB

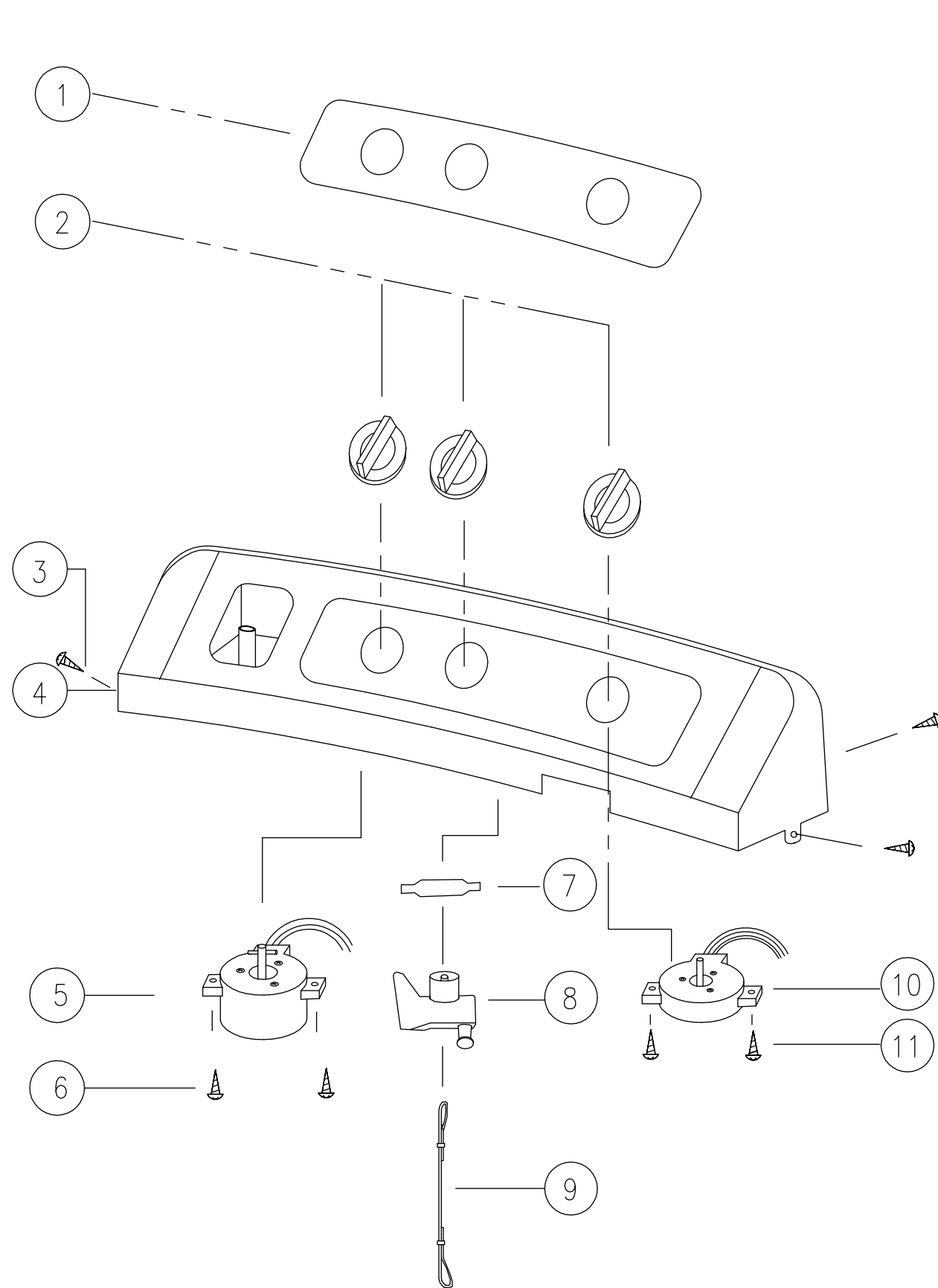
NO.	PART NAME	PART CORD	SPECIFICATION	QÖTY	REMARKS
1	TUB	3618819000	PP	1.0	
2	DOOR WASH	3611799600	HIPS	1.0	
3	PULSATOR AS	3619706800	DWM-160C	1.0	
4	SPECIAL SCREW	3616002901	SUS 304(NON SLOCK)	1.0	
5	BASE WATER SUPPLY	3610390900	PP	1.0	
6	FILTER OVERFLOW AS	3611903800	WITH FILTER AS	2.0	
7	BALANCER AS	3616105800	DWM-160C	1.0	
8	SCREW TAPPING	7122401211	T2S TRS 4*12 MFZN	4.0	
9	BASKET SPIN	3619103600	PP(J-360A)	1.0	
10	BELLOWS	3616402000	NBR	1.0	
11	FIXTURE BELLOWS	3612005800	PP	1.0	
12	LINK BRAKE	3617804300	PP BAND W6 L=564	1.0	
13	SPRING COVER	3615108810	HSW3	1.0	
14	DOOR SPIN	3611799500	HIPS	1.0	
15	PLATE T	3614525200	PP	1.0	
16	COVER INNER	3611419700	PP	1.0	
17	RING O	4506H05050	CR	1.0	
18	GEAR HOUSING ASS'Y	3617306201	3.3:1	1.0	DWM-160C
		3617309100	6:1	1.0	DWM-170C
19	SCREW TAPPING	7122502011	T2S TRS 5X20 MFZN	5.0	
20	PULLEY PULSATOR	3618432500	FRPP	1.0	DWM-160C
		3618432600	FRPP	1.0	DWM-170C
21	SPECIAL BOLT	3616008400	M6 SIDE-FIXING	1.0	
22	PROTECTOR F.B	3618303500	NBR	1.0	
23	VALVE CAP	4505F06013	PE-HD	1.0	
24	SPRING VALVE	4505C06022	SWC WR 1.0D	1.0	
25	ROD VALVE	3618504000	PP	1.0	
26	BELLOWS VALVE	4505C06041	NBR	1.0	
27	INLET JOINT	3617504100	PP	1.0	
28	CASE VALVE	3611131600	PP	1.0	
29	COVER S/W AS	4507K44031	15A 220VAC 1006FD	1.0	
30	SCREW TAPPING	7122502011	T2S TRS 4X14 MFZN	1.0	

ASSY MAIN

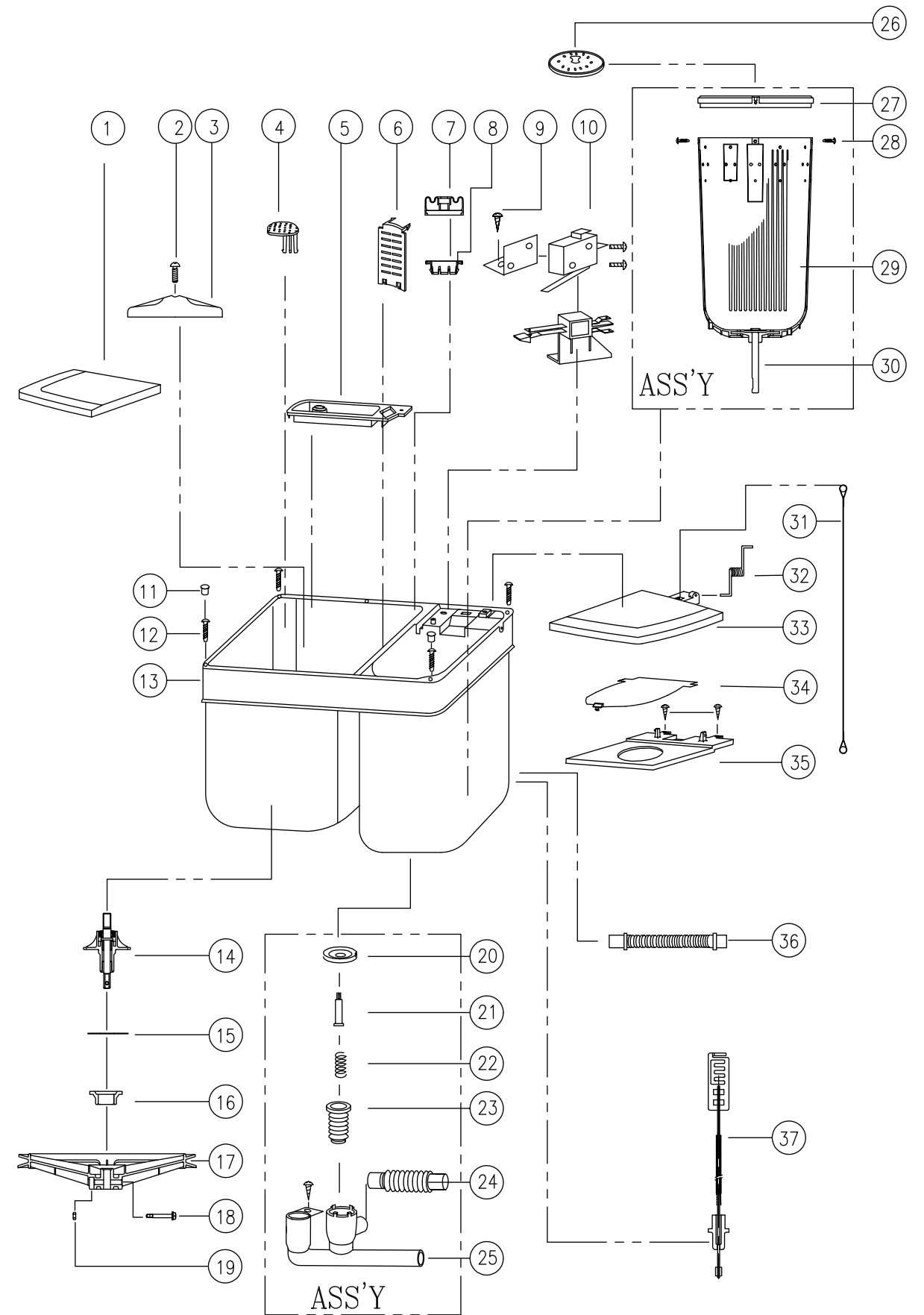
NO.	PART NAME	PART CORD	SPECIFICATION	QÖTY	REMARKS		
1	ASSY CABINET	PRCACA6200	DWM-160C 0.6T	1.0			
2	PLATE UPPER	3614525100	SGCC 0.6T	1.0			
3	SCREW TAPPING	7122401011	T2S TRS 4*10 MFZN	4.0			
4	COVER BACK	3611419800	SECC 0.4T	1.0			
5	SCREW TAPPING	7112400811	T1 TRS 4*8 MFZN	4.0			
6	BASE UNDER	3610390800	PP	1.0			
7	SCREW TAPPING	7122401011	T2S TRS 4*10 MFZN	7.0			
8	CUSHION SPOT	450M712010	PP	1.0			
9	CUSHION MOTOR	450M712020	NR	3.0			
10	MOTOR WASH	3618961900	220~240V/50HZ,W1S35VD060	1.0	N(P), M(P)		
		3618961600	110V/60HZ,W1S35ED060	1.0	T(P)		
		3618961800	220V/60HZ,W1S35UD060	1.0	L		
		3618962000	W1S35GD060	1.0	D ,S		
11	SPECIAL SCREW	3616003100	M5X35 WASHER	3.0			
12	PULLEY MOTOR AS	3618431700	PRESS(SGCC1.2T,D31),2.1MM	1.0	50HZ		
		3618431600	PRESS(SGCC1.2T,D24),4.3MM	1.0	60HZ		
13	WASHER PLAIN	7400108411	PW-1-8.4 MFZN	1.0			
14	WASHER SPRING	7401008011	SW-8 MFZN	1.0			
15	NUT HEX	7392800011	M8*P1.25 MFZN	1.0			
16	BELT V	450M700020	M-32	1.0	DWM-160C		
		3616590700	M-24	1.0	DWM-170C		
17	UNIT DRAIN PUMP AS	3618964800	AC 220~240V, 50HZ,PLASET	1.0	NP, MP		
		3618964900	AC 110V, 60HZ,PLASET	1.0	TP		
18	FIXTURE PUMP	3612005700	PP	1.0			
19	SCREW TAPPING	7112402011	T1 TRS 4X20 MFZN	1.0			
20	UNIT CAPACITOR	3618948200	9.7/5.2 400/440 CON-4P	1.0	L,N(P),M(P)		
		3618948600	45.6/25 200/200 CON-4P	1.0	T(P)		
21	CAPACITOR WASH	4505E11000	25+25UF	1.0	D, DUAL		
		4509C11020	200V 20.8UF*2	1.0	S, DUAL		
22	CAPACITOR SPIN	4509C11010	MF CAPACITOR 200V 20.8MF	1.0	D ,S,DUAL		
23	HARNES CONDENSER	3612706710	CONN A,B	1.0	DUAL		
24	CORD POWER AS	3611332100	T VACTFK 2*0.75 2.3M GY	1.0			
		3611331700	A VACTFK 2*0.75 2.3M GY	1.0			
		3611331310	VCTF 3*0.75 2.3M GY	1.0			
		3611331630	H05VV-F 3*0.75 WH	1.0			
		3611331650	H05VV-F 3*0.75 BK	1.0			
		3611331110	VCTF 3*0.75 2.3M GY	1.0			
		3611331810	H05VV-F 3*0.75 2.3M BK	1.0			
		3611332100	VCTFK 2*0.75 2.3M GY	1.0			
		3611331930	C SJT 3*18AWG 2.3M GY	1.0			
		3611331700	A VCTFK 2*0.75 2.3M GY	1.0			
		3611331700	FH05VV 3*0.75 2.3M BK	1.0			
		25	COUPLING DRUM AS	3617002100	DWM-160C	1.0	
		26	SPECIAL BOLT AS	3616008000	6B-1-M8X12	2.0	
27	BRAKE FIX PLT AS	4505C54000	2-WAY	1.0			
28	BOLT HEX	7341500811	6B-1-5X8 MFZN	3.0			
29	SPRING BRAKE	4507K53010	SWC D1.0 ZN8-C	1.0			
30	ASS'Y BRAKE WIRE	3619201702	SUS WIRE+PE L260	1.0			
31	BOLT HEX	7341501611	6B-1-5X16 HS MFZN	3.0			
32	UNIT SPIN MOTOR	3618949601	110V 60HZ W1D35EF001	1.0	T(P)		
		3618949201	220V 60HZ W1D35UF001	1.0	L		
		3618949401	220-240V 50HZ W1D35VF001	1.0	N(P), M(P)		
		3618950101	W1D35FF002 110/220V 50HZ	1.0	D , DUAL		
3618950001	W1D35LF002 120/240V 60HZ	1.0	S , DUAL				
33	CUSHION MOTOR SPIN	3611556300	PP	3.0			
34	BRACKET MOTOR SPIN	3610606100	SPG 1.6T	1.0			
35	SCREW TAPPING	7122502511	T2 TRS 5X25 MFZN	3.0			
36	SPRING CUSHION	3615112700	SWC D=3.2	1.0			
37	STOPPER	4506H14020	PE - HD	1.0			
38	STOPPER LOWER	3615200800	PP	1.0			
39	RUBBER DAMPING	4506H14030	NBR	1.0			
40	HARNES ASS'Y	3612757300	7510	1.0	PUMP MODEL		
		3612757220	800C	1.0	N,M,T ,L		
		3612756301	7510	1.0	D ,S		
41	HARNES EARTH	3612757810	UL1015 AWG18 490	1.0			
42	CABLE CLAMP	3611202610	NYLON66 DA-5N	1.0			
43	TAPTITE SCREW	7272400811	TT3 TRS 4*8 MFZN	1.0			

1. EXPLODED VIEW

PANEL ASSY

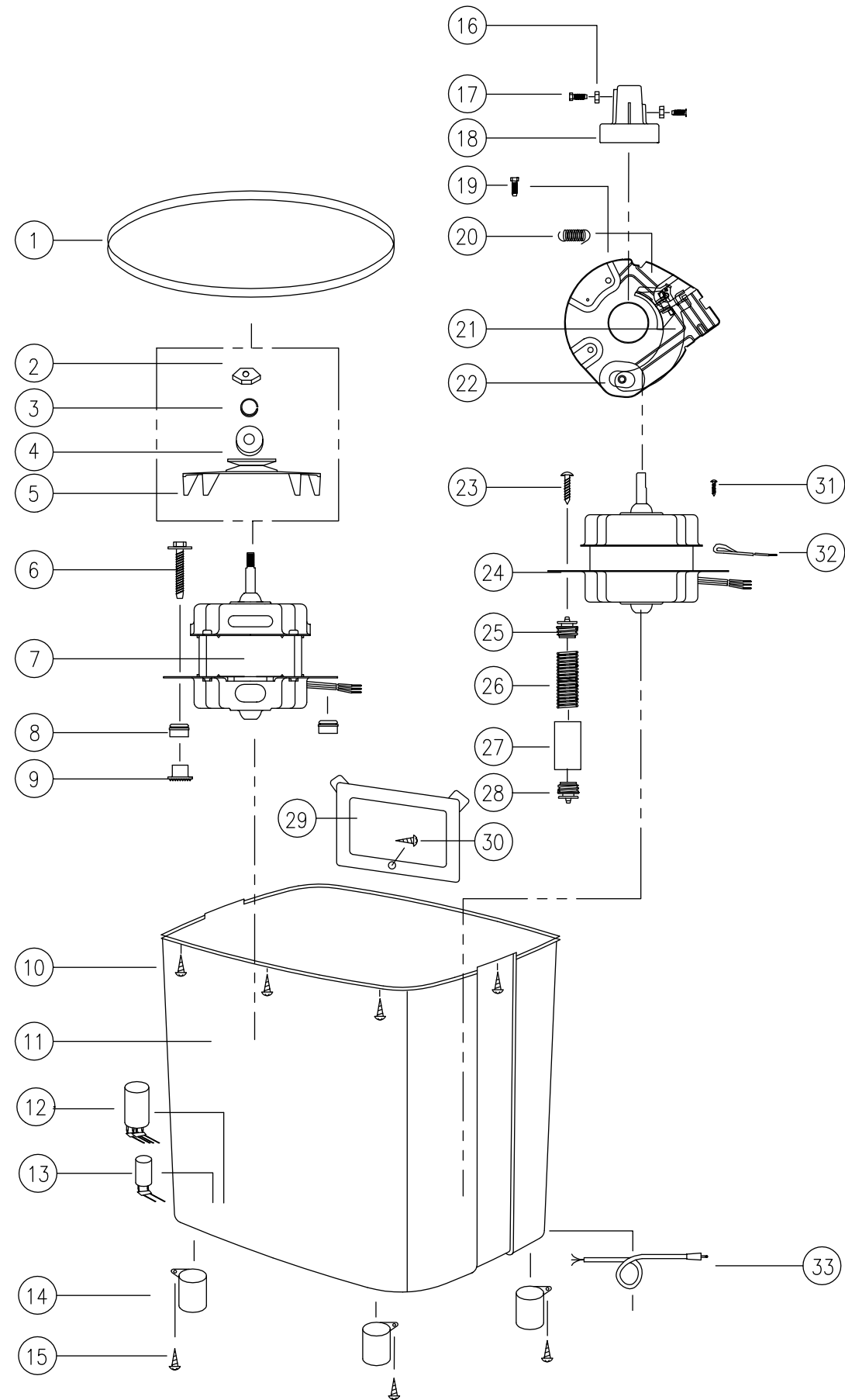


TUB ASSY



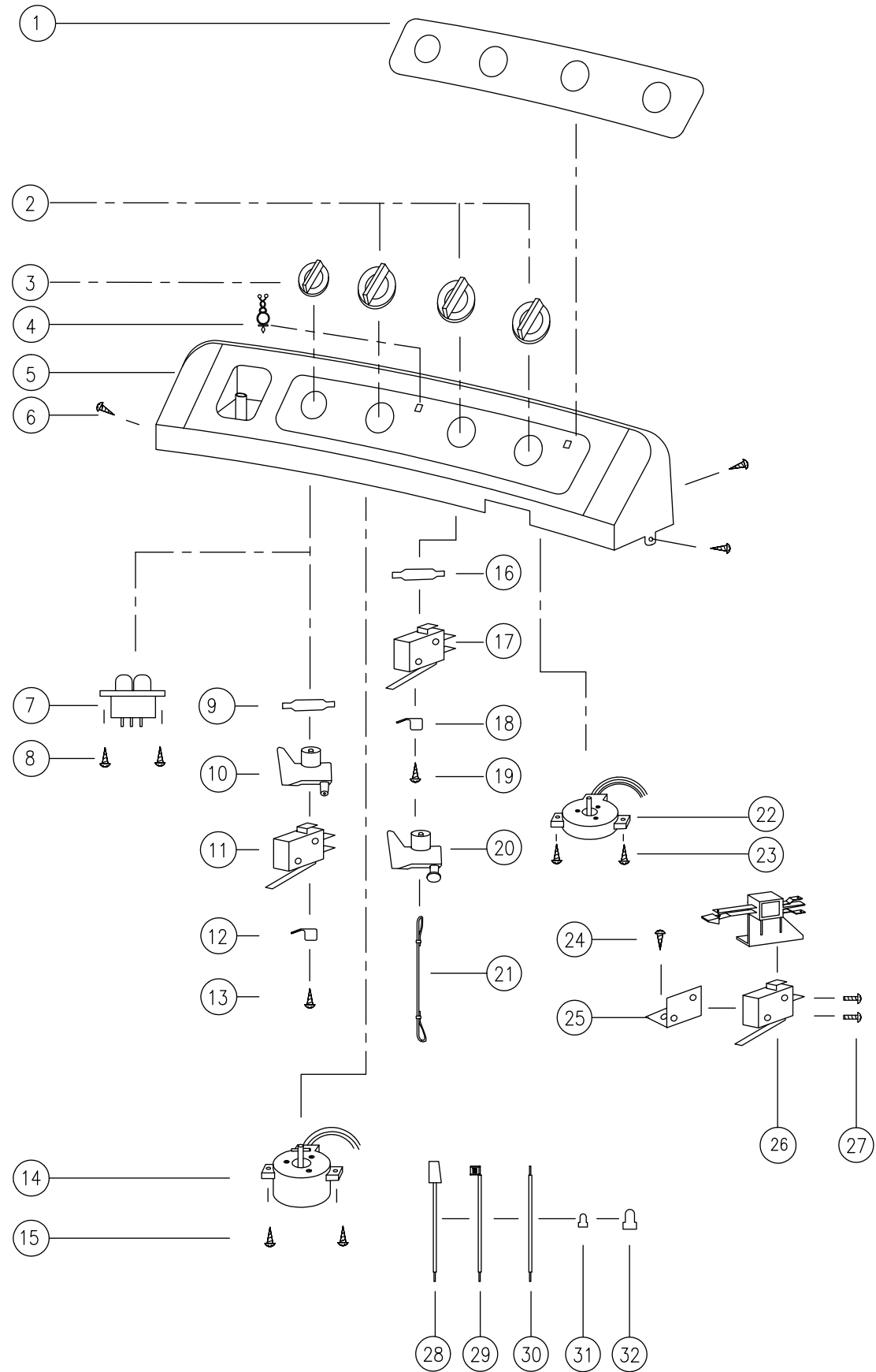
1_2. EXPLODED VIEW

BASE ASSY

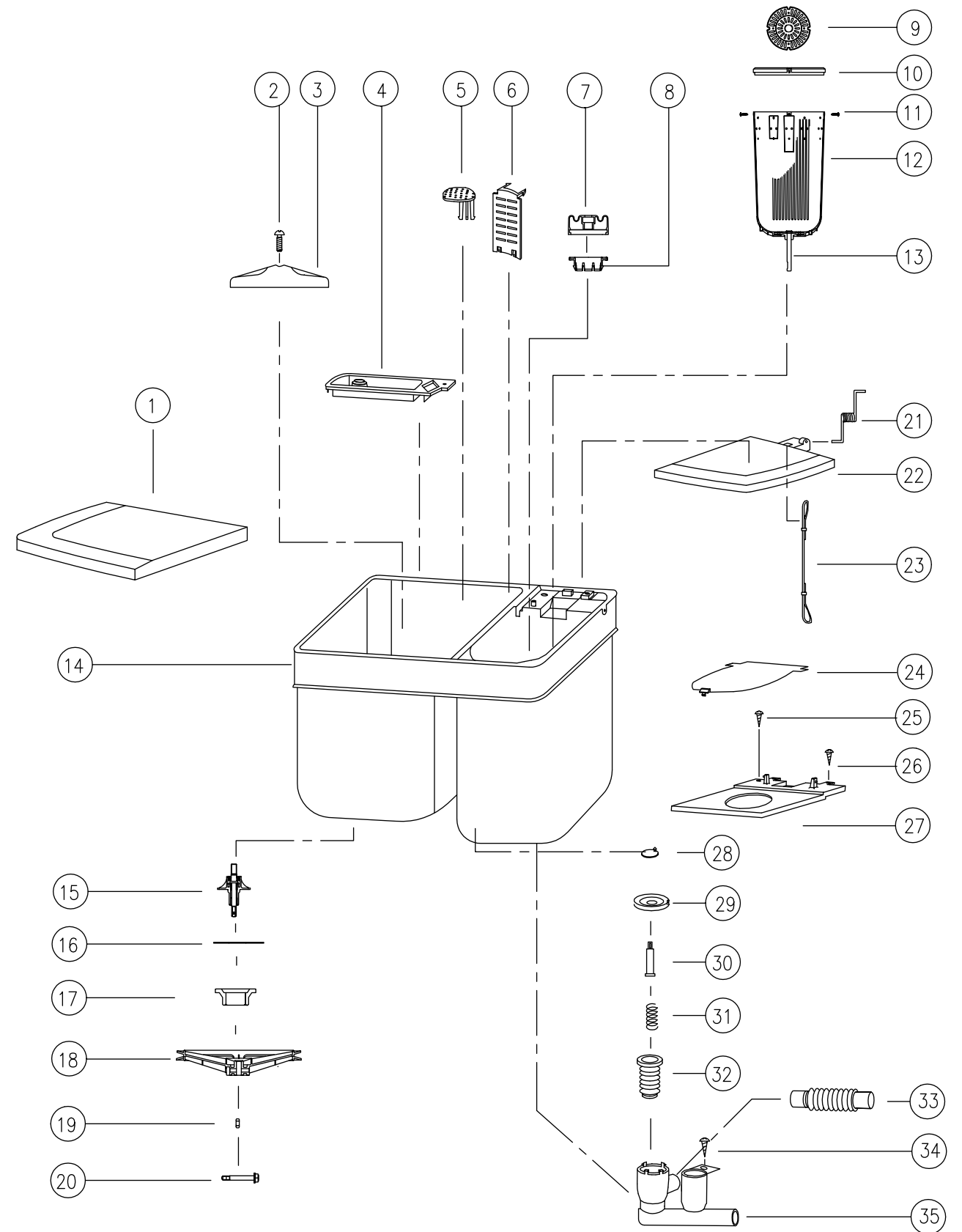


1. EXPLODED VIEW

PANEL ASSY

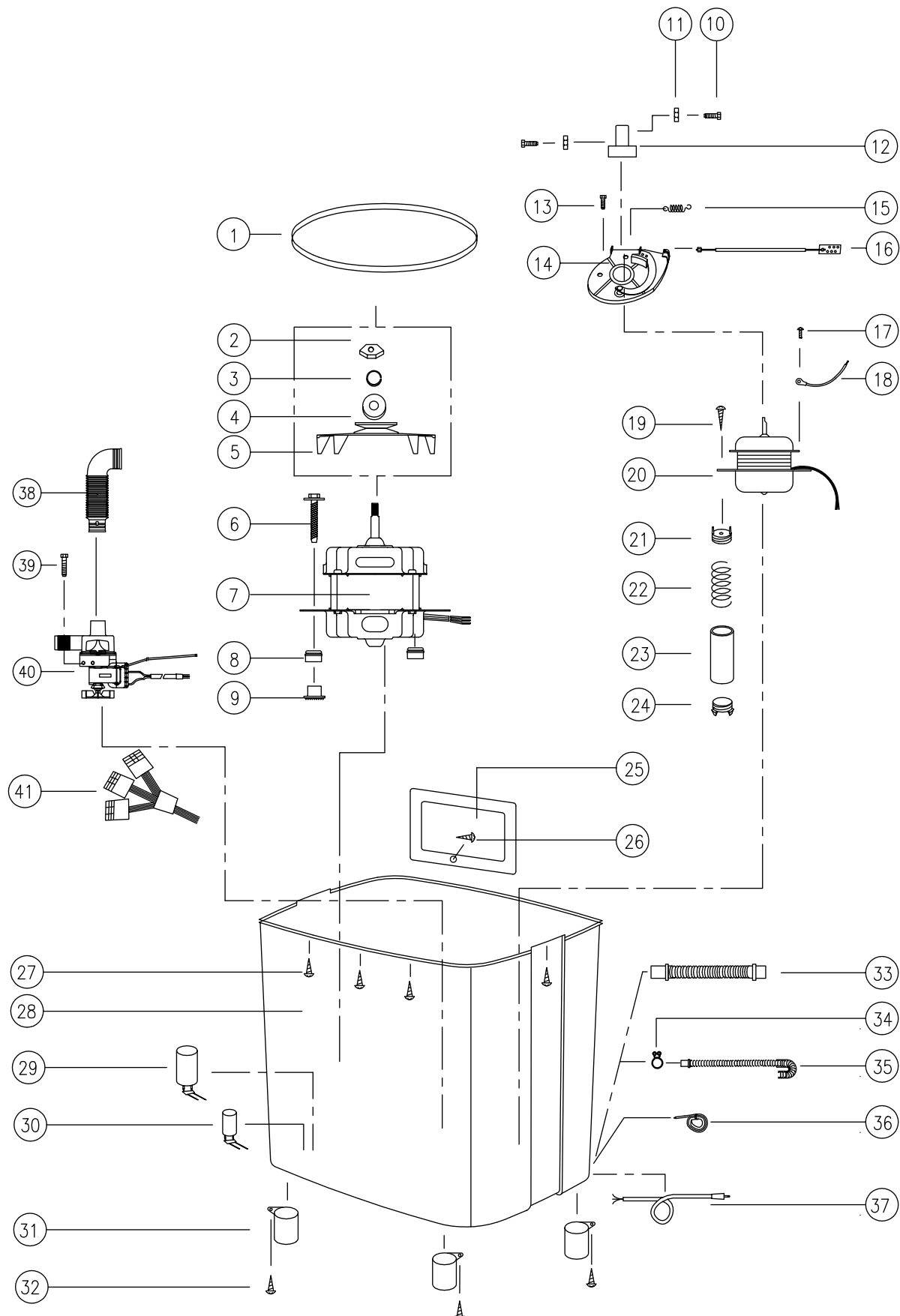


TUB ASSY

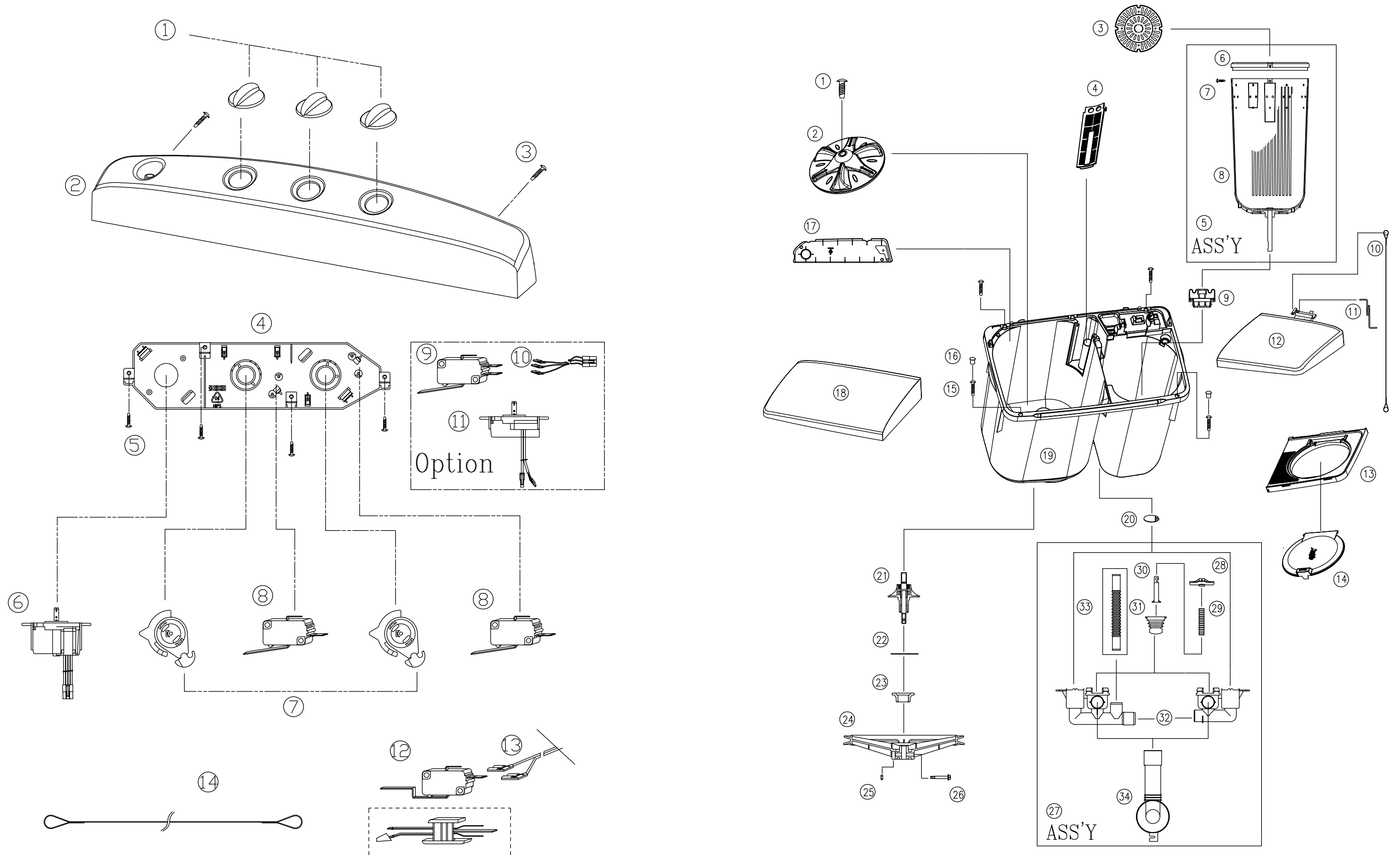


1_2. EXPLODED VIEW

BASE ASSY



1. EXPLODED VIEW



2. PARTS LIST

1) DWF-500M, 501M REVISION

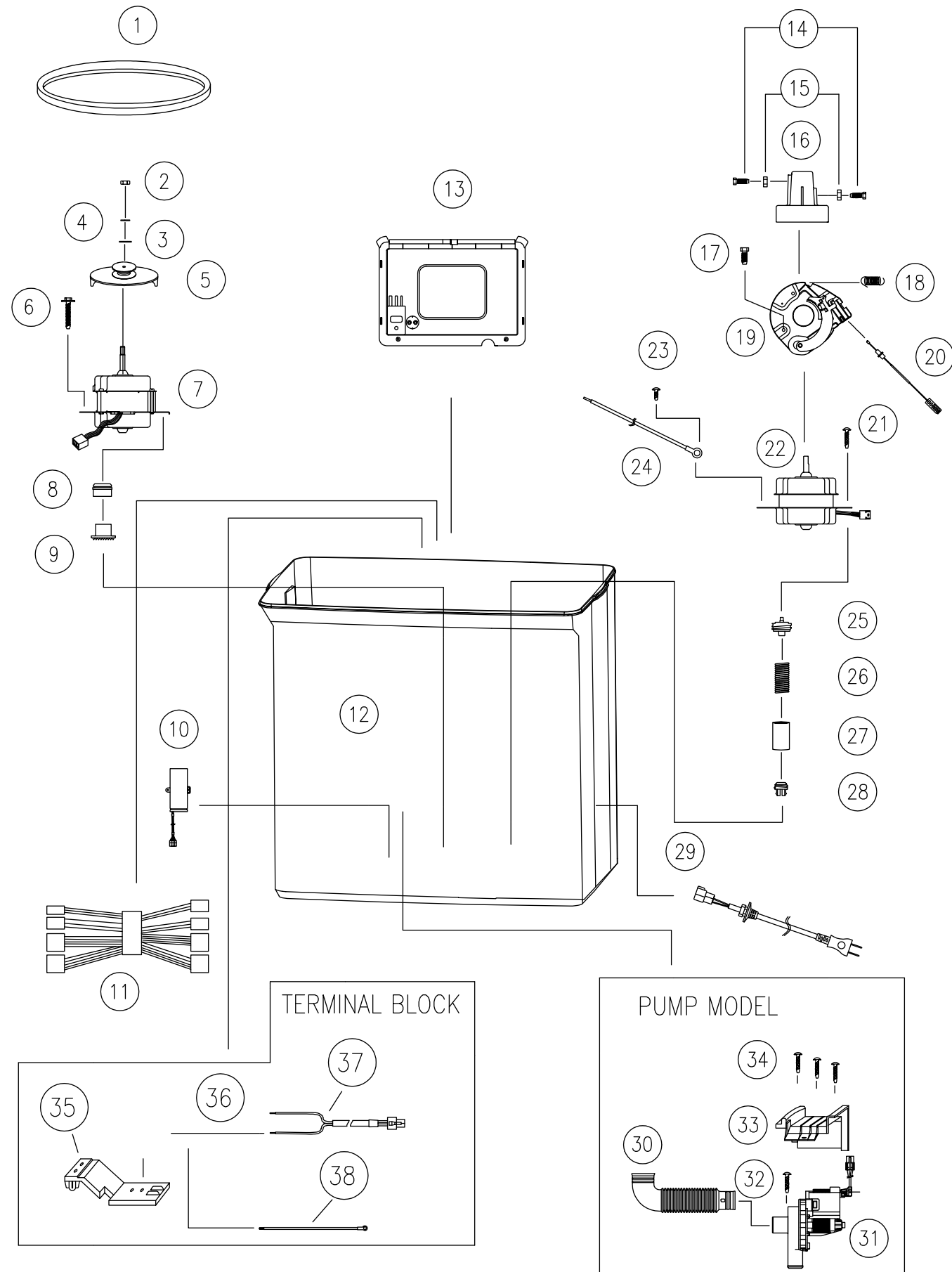
NO	PART NAME	PART CODE	SPECIFICATION	Q'TY	UNIT	REMARKS
1	KNOB	3613403110	ABS(J728)	3.00	EA	
2	PANEL	3614230500	PP(J-945)	1.00	EA	500M
		3614231000	PP(J-945)	1.00	EA	501M
		3614233900	PP(J-945)	1.00	EA	502M
3	SCREW TAPPING	7122401411	T2S TRS 4X14 MFZN	4.00		
4	BRACKET PANEL	3610604800	HIPS(HI-425TV)	1.00	EA	" 500M, HB"
		3610604810	HIPS(HFH-400)	1.00		" 500M, VO, S/TIMER"
		3610604820	HIPS(HFH-400)	1.00		" 500M, VO"
		3610605200	HIPS(HI-425TV)	1.00	EA	" 501M, HB"
		3610605210	HIPS(HFH-400)	1.00		" 501M, VO, S/TIMER"
		3610605220	HIPS(HFH-400)	1.00		" 501M, VO"
		3610605400	PP	1.00		502M NON PUMP
		3610605410	PP	1.00		502 PUMP
5	SCREW TAPPING	7122401411	T2S TRS 4X14 MFZN	4.00	EA	
6	TIMER WASH	3619910701	"S-K30AP, SAN"	1.00	EA	" PUMP, SAN"
		3619910711	"S-K30BP, PC"	1.00	EA	" PUMP, PC"
		3619910721	"S-K30AS, SAN"	1.00		" JAPAN(S/T, UL94HB)"
		3619910731	"S-K30BS, PC"	1.00		" JAPAN(S/T, UL94V-O)"
		3619910741	"S-K30A, SAN"	1.00		" NON-PUMP, SAN"
		3619910751	"S-K30B, PC"	1.00		" NON-PUMP, PC"
7	LEVER CONTROL	3613701400	POM	2.00	EA	
8	SWITCH SELECTOR	3619044600	SZM-V15-2FA-93	2.00	EA	
9	SWITCH DRAIN	3619043700	"VP531A-2H,250VAC,15A"	1.00		" PUMP, S/TIMER"
10	HARNESS DRAIN	3612759900	500M'S DRAIN HARNESS	1.00	EA	" PUMP, S/TIMER"
11	TIMER SPIN	3619910800	"S-3000A,SAN"	1.00	EA	JAPAN(UL94HB)
		3619910810	"S-3000B,PC"	1.00	EA	JAPAN(UL94V-O)
12	COVER S/W AS	4507K44031	"15A,220VAC 1006FD"	1.00	EA	
		3619044800	S-SC7510A	1.00		OPTION
13	HARNESS SPIN	3612759800	500M'S DOOR HARNESS	1.00		NON-PUMP
14	LINK VALVE	3613800900	PP BAND	1.00	EA	

✓ **Caution:** In this Service Manual, some parts can be changed for improving, their performance without notice in the parts list. So, if you need the latest parts information, please refer to PPL(Parts Price List) in Service information Center(<http://svc.dwe.co.kr>)

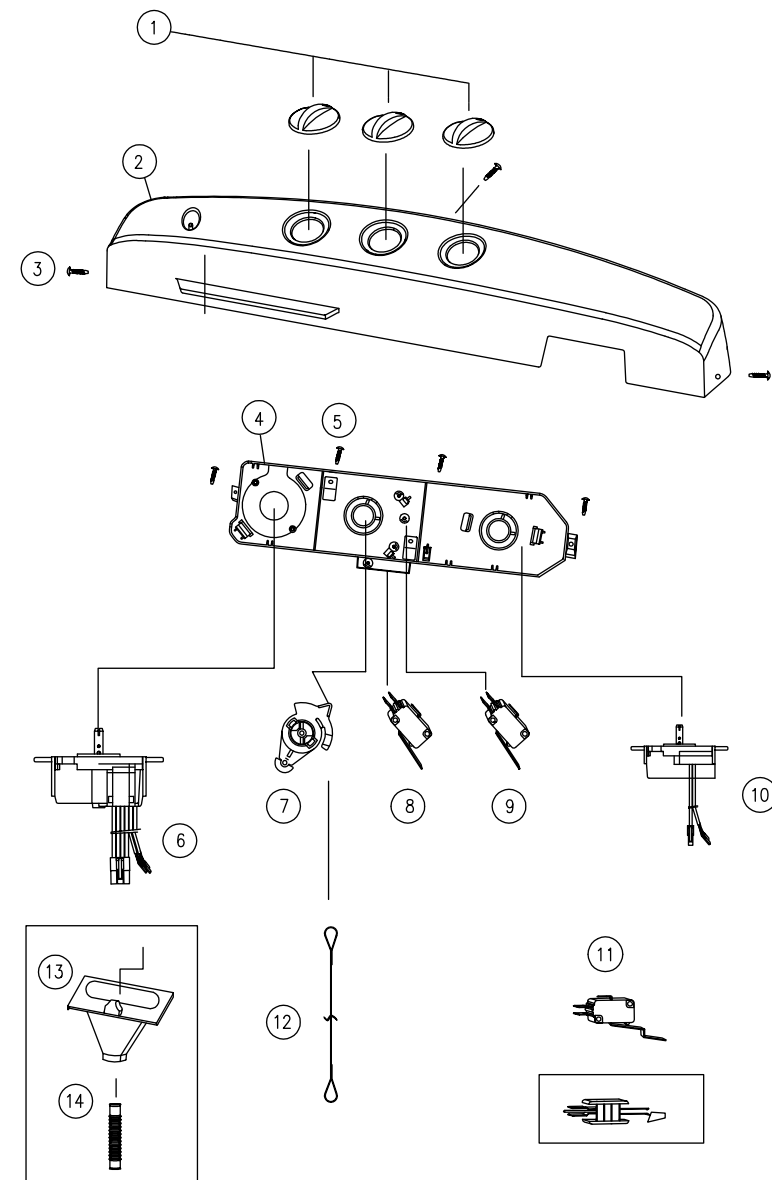
NO	PART NAME	PART CODE	SPECIFICATION	Q'TY	UNIT	REMARKS
1	SPECIAL SCREW	3616002900	SUS 304	1.00	EA	
2	PULSATOR AS	3619705100	PP(J-640A)	1.00	EA	
3	COVER SAFETY	3611417000	LLDPE(JL210)+HDPE(JK910)	1.00		
4	FILTER OVER FLOW	3611904300	PP(J-640A)	1.00	EA	
5	BASKET SPIN AS	3619103200	"AS, 500M'S"	1.00		
6	RING BASKET	3614602100	3.0Kg	1.00	EA	
7	SCREW TAPPING	7122401208	T2S TRS 4X12 SUS	4.00	EA	
8	BASKET	3619102900	PP(J-640A)	1.00	EA	
9	BELLOWS AS	3616401500	"AS, 4.0kg"	1.00	EA	
10	LINK BRAKE	3613801300	PP BAND(L453)	1.00	EA	
11	SPRING COVER	3615110400	HSW3	1.00	EA	
12	DOOR SPIN O	3611416900	PP(J945)	1.00	EA	
13	PLATE T	3614518300	PP(J740)	1.00	EA	
14	COVER INNER	3611416701	PP(J700)	1.00	EA	
15	SCREW TAPPING	7122401611	T2S TRS 4X16 MFZN	5.00	EA	
16	CAP SCREW	3610901700	PP	2.00	EA	
17	BASE WATER	3610388100	PP(J740)	1.00	EA	
18	COVER WASH	3611416800	PP(J945)	1.00	EA	
19	TUB	3618816000	PP(J740)	1.00	EA	
20	PROTECTOR F.B.	3618303500	NBR	1.00	EA	" PUMP, JAPAN"
21	CASE SHAFT AS	3611118500	"AS, 4.0kg"	1.00	EA	
22	GASKET	3612301400	NBR(K35L)	1.00	EA	
23	SPECIAL NUT	3616007500	LUPOL GP-2300	1.00	EA	
24	PULLEY PULSATOR	3618430300	FRPP(GLASS 30%)	1.00	EA	
25	SPECIAL BOLT	3616008300	SM18C+SILOCK(M5)	1.00	EA	
26	NUT HEX	7391500011	6N-1-5 MFZN	1.00	EA	
27	DRAIN ASS'Y	3611120500	DRAIN AS(PUMP)	1.00		PUMP
28	CAP VALVE	3610909400	PP	1.00	EA	
29	SPRING VALVE	4505C06020	SUS 304 WR 1.0D	1.00	EA	
30	VALVE ROD	3615406700	PP	1.00	EA	
31	BELLOWS	4509A06042	NBR	1.00	EA	
32	CASE VALVE	3611119300	PP(640A)	1.00	EA	NON-PUMP
		3611119400	PP(640A)	1.00	EA	PUMP
33	HOSE OVERFLOW	3613220800	"LDPE, 4010"	1.00	EA	" JAPAN, OPTION"
34	INLET JOINT	3617503900	PP(640A)	1.00	EA	

1. EXPLODED VIEW

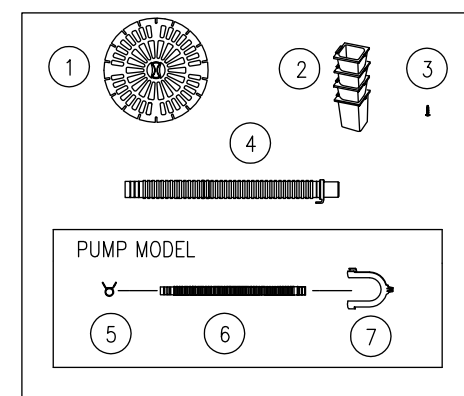
ASSY MAIN



ASSY PANEL

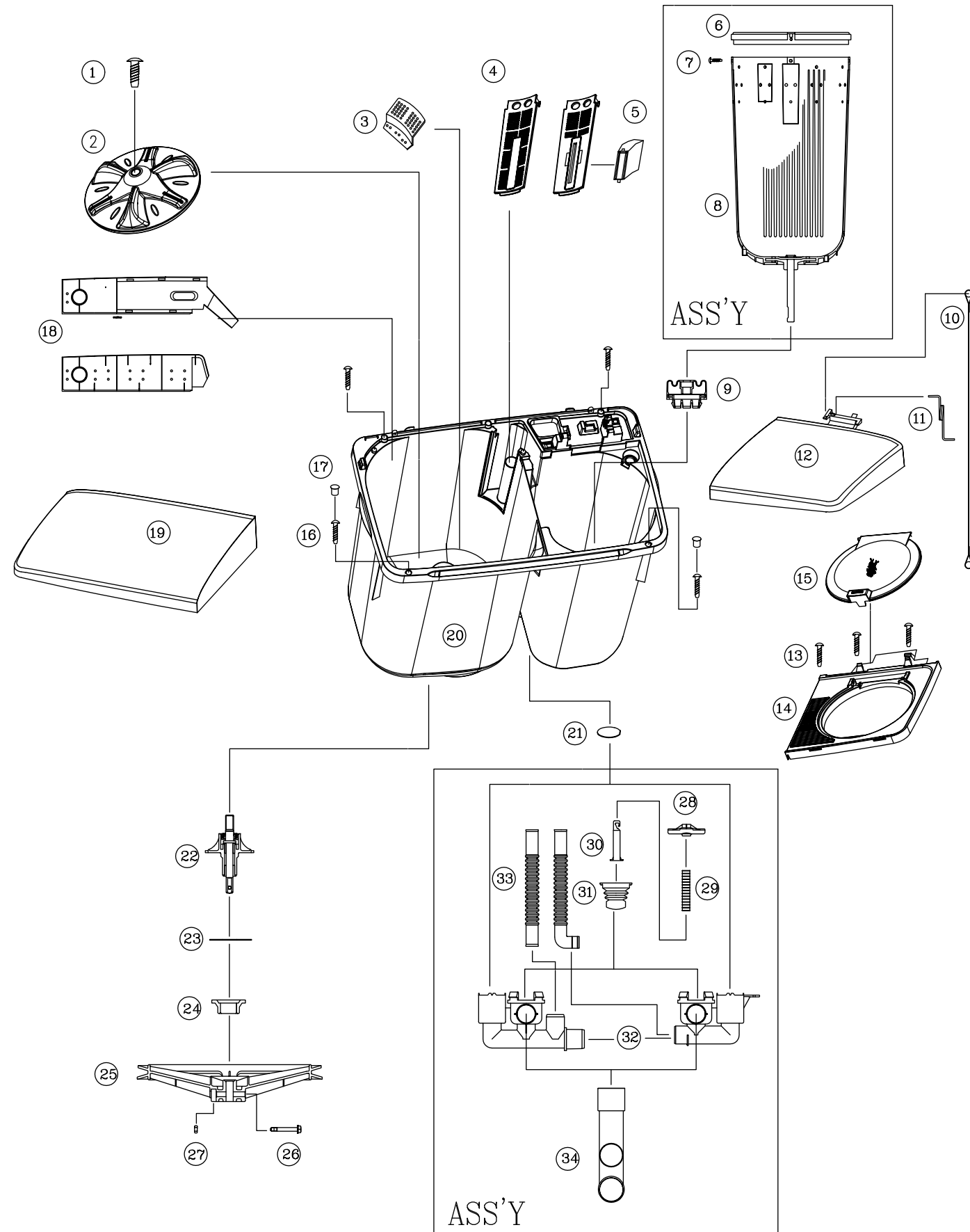


ASSY ACCESSORY



1_2. EXPLODED VIEW

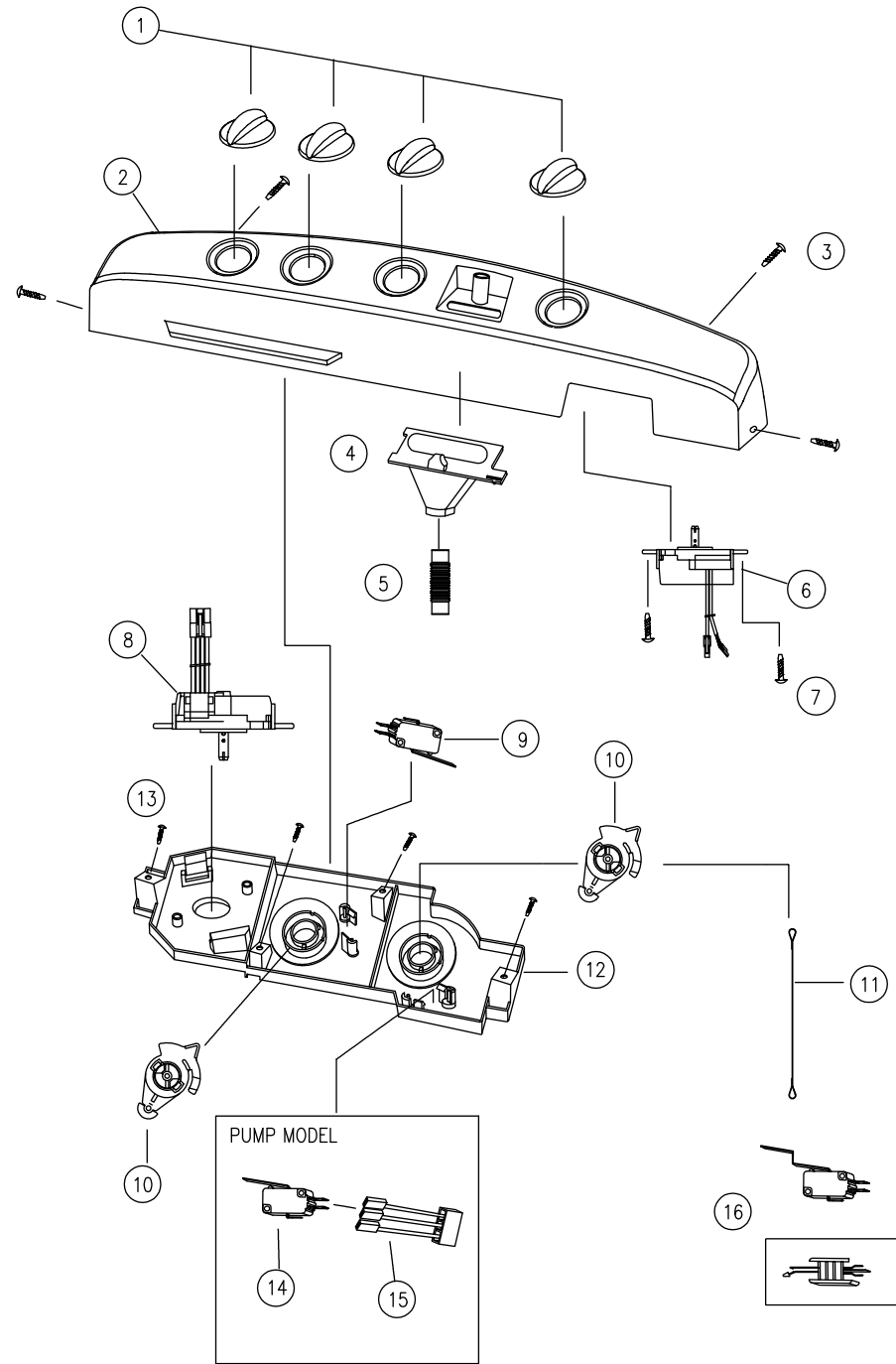
TUB ASS'Y



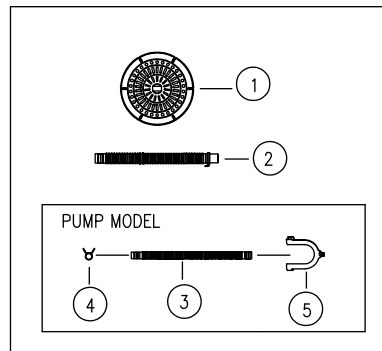
DWM-7510 ALL MODEL REVISION

1. EXPLODED VIEW

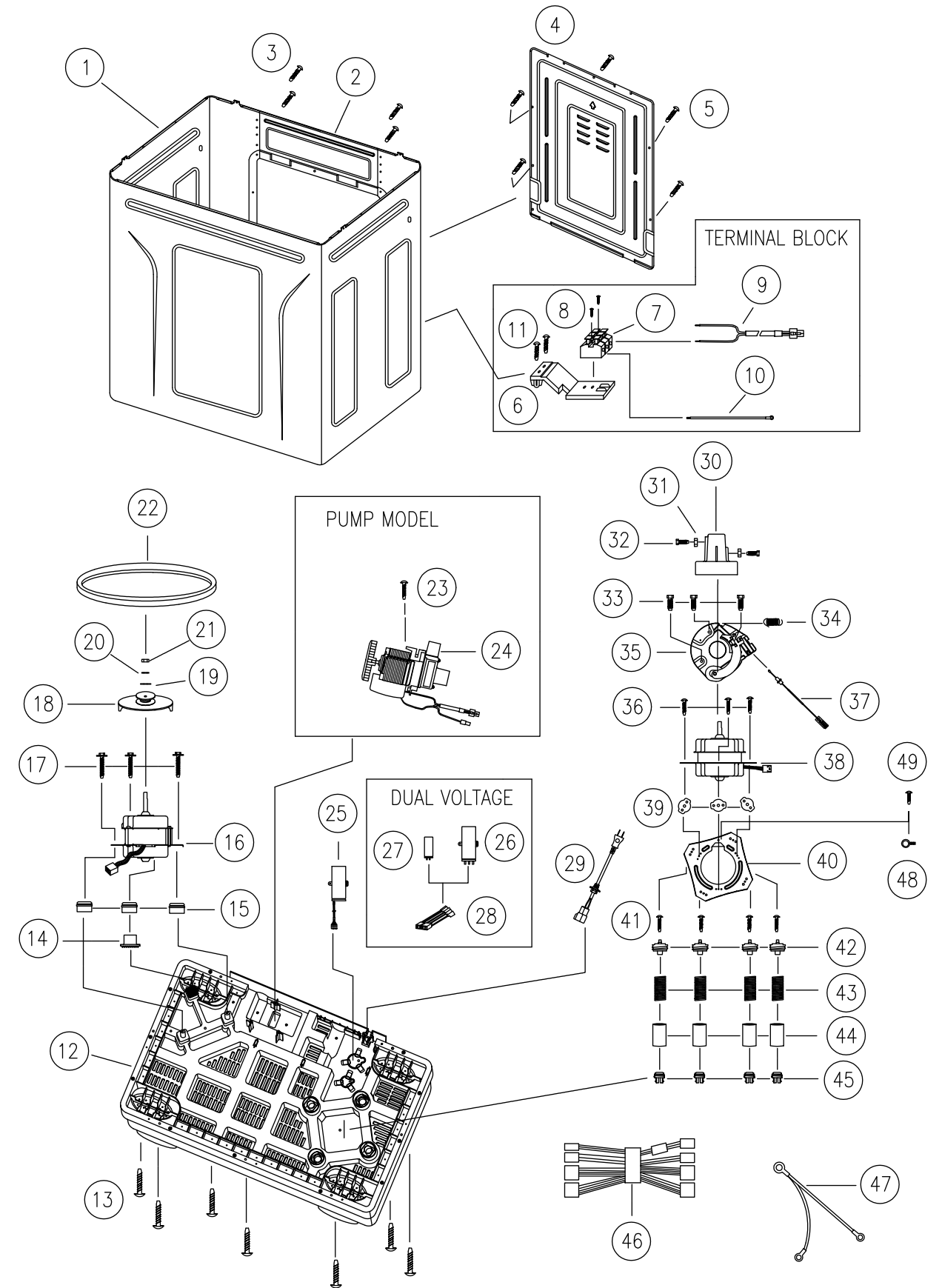
ASSY PANEL BACK(DWM-7510S')



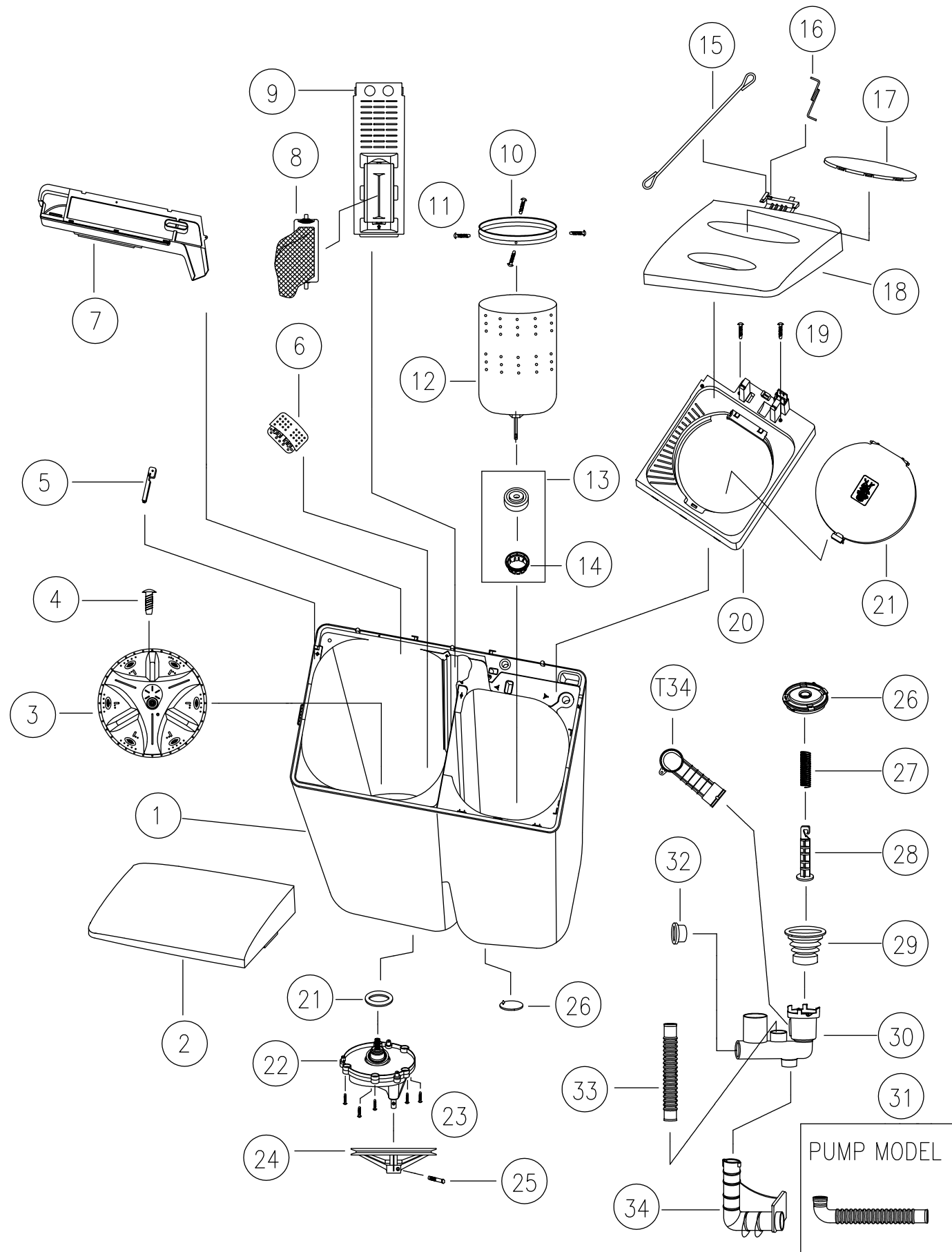
ASSY ACCESSORY(DWM-7510S')



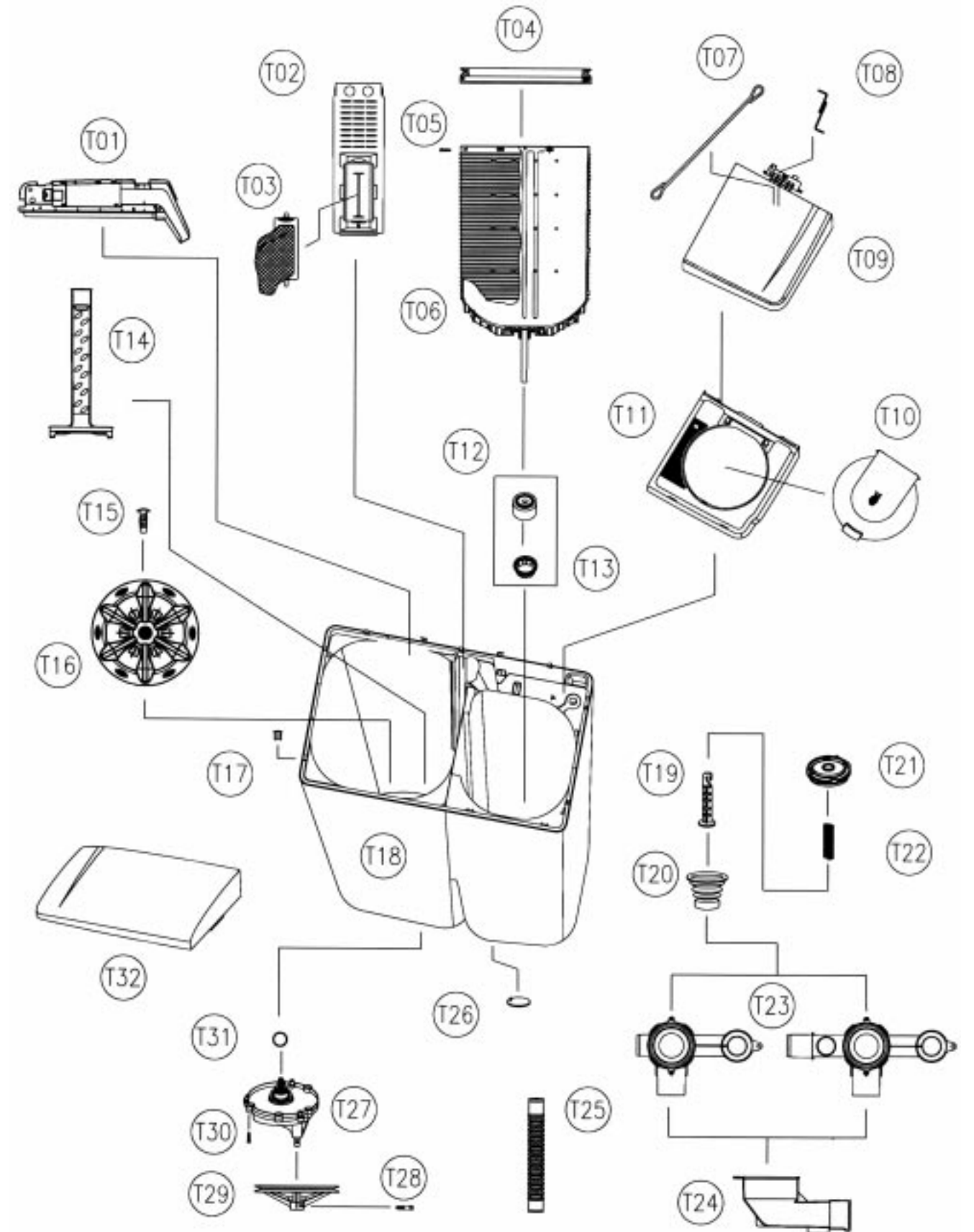
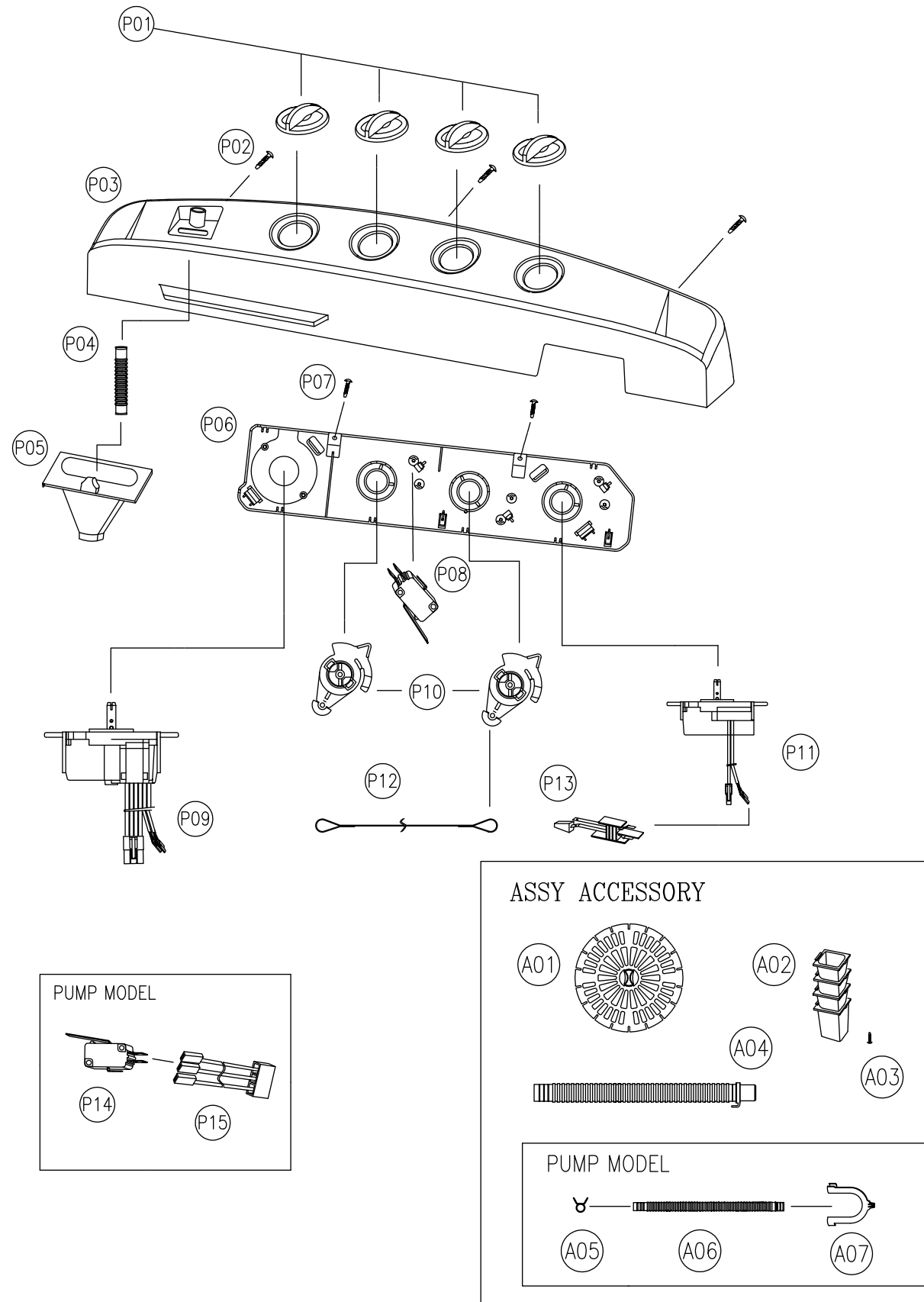
ASSY MAIN(DWM-7510S')



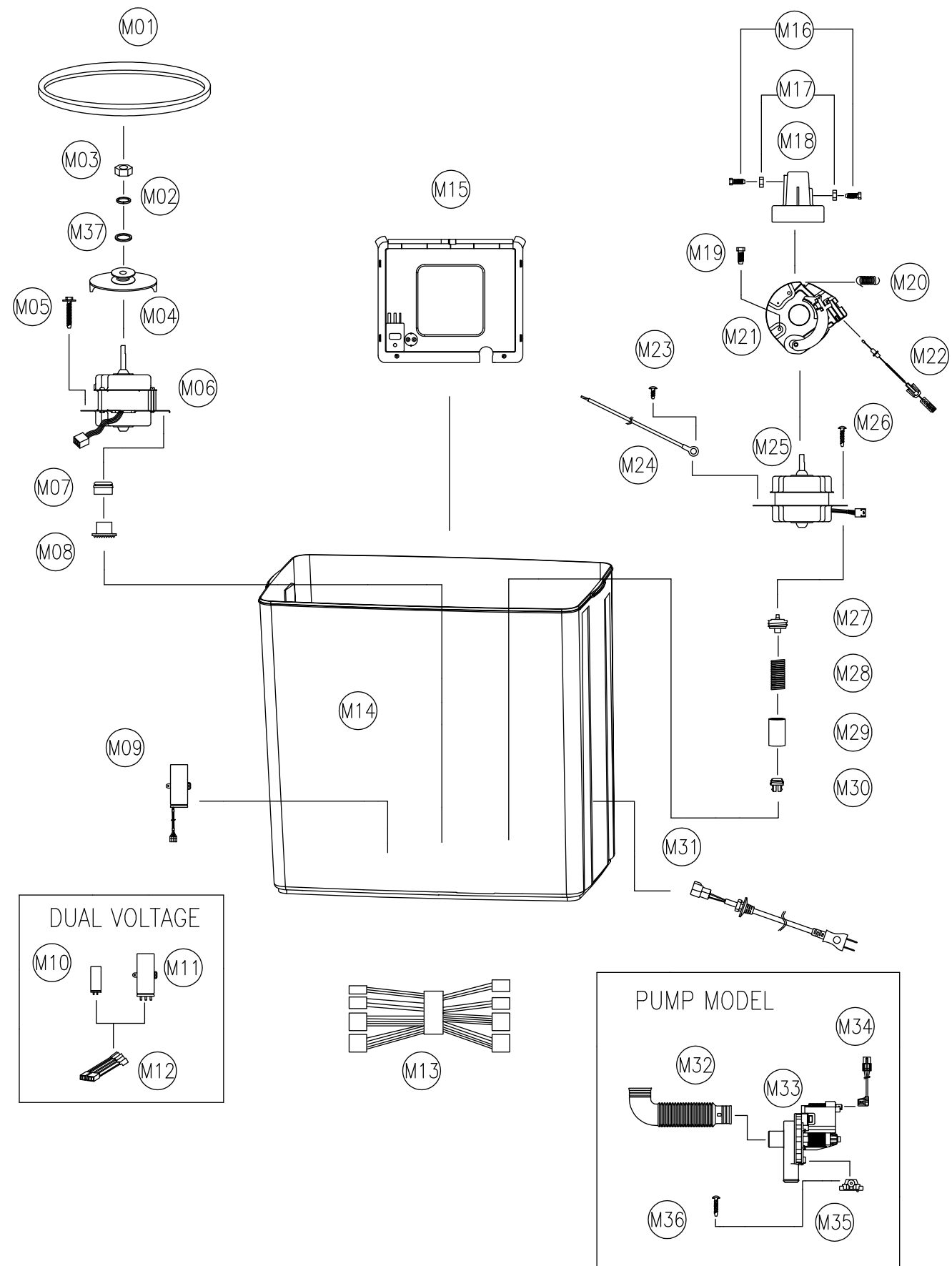
1_2. EXPLODED VIEW



1. EXPLODED VIEW



1. EXPLODED VIEW



2. PARTS LIST

1) DWM-800C(P)

✓ **Caution:** In this Service Manual, some parts can be changed for improving, their performance without notice in the parts list. So, if you need the latest parts information, please refer to PPL(Parts Price List) in Service information Center(<http://svc.dwe.co.kr>)

NO.	PART NAME	PART CORD	SPECIFICATION	QÖTY	REMARKS
P01	KNOB	3613403700	ABS	4.0000	
P02	SCREW TAPPING	7122401411	T2S TRS 4X14 MFZN	3.0000	
P03	PANEL B	3614234400	PP	1.0000	
P04	HOSE SPRAY	3613201210	LEPE	1.0000	
P05	LEVER W.S SELECT	3613702000	PP	1.0000	
P06	BRACKET PANEL	3610605500	PP	1.0000	
P07	SCREW TAPPING	7122401411	T2S TRS 4X14 MFZN	2.0000	
P08	SWITCH DRAIN	3619043700	VP531A-2H, 250VAC/15A	1.0000	
P09	TIMER WASH	3619910940	S-K80NT, SAN, 2SELECT, CONN	1.0000	
P10	LEVER CONTROL	3613701400	DWM-3000, POM	2.0000	
P11	TIMER SPIN	3619911000	S-800CA, SAN, CONN	1.0000	
P12	LINK VALVE	3617804000	PP BAND	1.0000	
P13	S/W COVER	3619044800	LIP TYPE	1.0000	
P14	SWITCH DRAIN	3619043700	VP531A-2H, 250VAC/15A	1.0000	PUMP
P15	HARNESS DRAIN	3612787400	MSF20/0.18 CONN+187FLAG	1.0000	PUMP

NO.	PART NAME	PART CORD	SPECIFICATION	QÖTY	REMARKS
A01	COVER SAFETY	3611418900	PE-LD	1.0000	
A02	LEG	3617702400	PP	4.0000	
A03	SCREW TAPPING	7122401411	T2S TRS 4X14 MFZN	4.0000	
A04	HOSE DRAIN O AS	3613224310	L=820MM, NON-CLAMP	1.0000	
A05	CLAMP HOSE O	3611202400	HSW-3, 4.0KG	1.0000	PUMP
A06	HOSE DRAIN O	3613222600	4010NP	1.0000	PUMP
A07	GUIDE DRAIN HOSE	3612502300	PP	1.0000	PUMP

NO.	PART NAME	PART CORD	SPECIFICATION	QÖTY	REMARKS
T01	BASE WATER SUPPLY	3610389500	PP	1.0000	
T02	FILTER OVER FLOW	3611903700	PP	1.0000	
T03	FILTER AS	3611904000	PP+POLYESTER	1.0000	
T04	RING BASKET	3614602300	PP	1.0000	
T05	SCREW TAPPING	7122401411	T2S TRS 4*14 MFZN	2.0000	
T06	BASKET SPIN	3619103300	DWM-800C	1.0000	
T07	LINK BRAKE	3617801600	PP BAND W6	1.0000	
T08	SPRING COVER	3615110400	HSW3	1.0000	
T09	DOOR SPIN O	3611797800	PP	1.0000	
T10	COVER INNER	3611418800	PP	1.0000	
T11	PLATE T	3614522500	PP	1.0000	
T12	BELLOWS AS	3616401800	AS, 800C	1.0000	
T13	FIXTURE BELLOWS	3612005000	PP	1.0000	
T14	GUIDE CASCADE	3612509000	PP	1.0000	
T15	SPECIAL SCREW	3616002901	SUS604 (NON SILOCK)	1.0000	
T16	PULSATOR AS	3619706500	800C	1.0000	
T17	CAP SCREW	3610911700	PP	2.0000	
T18	TUB	3618817900	PP (JI-360)	1.0000	
T19	ROD VALVE	3618504000	PE-HD	1.0000	
T20	BELLOWS VALVE	4505C06040	NR	1.0000	
T21	VALVE CAP	4505F06013	PE-HD	1.0000	
T22	SPRING VALVE	4505C06022	SWC WR 1.0D	1.0000	
T23	CASE VALVE	3611131500	PP	1.0000	NON-PUMP
		3611131600	PP	1.0000	PUMP
T24	INLET JOINT	3617504100	PP	1.0000	
T25	HOSE OVERFLOW	3613220800	LDPE	1.0000	JAPAN
T26	PROTECTOR F.B	3618303500	NBR	1.0000	PUMP
T27	GEAR HOUSING AS	3617306200	DWF-7510S R=3.3:1	1.0000	
T28	SPECIAL BOLT	3616008400	M6 SIDE-FIXING	1.0000	
T29	PULLEY PULSATOR	3618432200	FR-PP GP-2300	1.0000	
T30	SCREW TAPPING	7122502011	T2S TRS 5X20 MFZN	5.0000	
T31	RING O	4506H05050	N. B. R	1.0000	
T32	DOOR WASH	3611797900	PP	1.0000	

NO.	PART NAME	PART CORD	SPECIFICATION	QÖTY	REMARKS
M01	BELT V	4504B00020	M-25	1.0000	
M02	WASHER SPRING	7501008011	SW-8 MFZN	1.0000	
M03	NUT HEX	7392800011	M8*01.25 MFZN	1.0000	
M04	PULLEY MOTOR AS	3618431600	PRESS(SGCC1.2T, D31), 4.3MM	1.0000	
		3618431700	PRESS(SGCC1.2T, D31), 2.1MM	1.0000	
M05	SPECIAL SCREW	3616017010	T2 TRS 4X35 MFZN PW	3.0000	
M06	MOTOR-WA AS	3618958100	220-240V/50HZ, W1D35VD050	1.0000	N, NP, M, MP
		3618959200	AC 220V/60HZ, WD35UD050	1.0000	L
		3618959300	AC 110V/60HZ, W1D35ED050	1.0000	T, TP
		3618959400	AC 100V, 50/60HZ, W1D35BD050	1.0000	J
		3618959600	110/240V, 5/60HZ, W1D35GD050	1.0000	S, D
M07	CUSHION MOTOR	3611554500	NR	3.0000	
M08	CUSHION MOTOR SPOT	3611554600	PP	1.0000	
M09	UNIT CAPACITOR	3618948200	9.7/5.2uF, 400/440, CON-4P	1.0000	N, NP, M
		3618948300	10.4/5.2uF, 400/440, CON-4P	1.0000	MP
		3618948500	45.6/20.8uF, 200/250, CON-4P	1.0000	T, TP
		3618948600	45.6/25uF, 200/200, CON-4P	1.0000	J
M10	CAPACITOR WASH	4509C11020	20.8uF*2,200V	1.0000	S, D
M11	CAPACITOR SPIN	450E111060	16uF, 250V	1.0000	S
		4509C11010	20.8uF, 200V	1.0000	D
M12	HARNESS CAPACITOR	3612706710	CONN A,B	1.0000	S, D
M13	HARNESS AS	3612757000	4010DUAL NON-PUMP HARNESS	1.0000	S, D
		3612757220	DWM-500M, S/NON-PUMP	1.0000	N, M, T, L
		3612757230	JAPAN, FILTER	1.0000	J
		3612757300	4010SINGLE PUMP HARNESS	1.0000	NP, MP, TP
M14	BASE	3610389400	PP (JI-360)	1.0000	
M15	COVER BACK	3611416610	PP (J740)	1.0000	
M16	BOLT	7342602011	6B-2-6X20 POINTING MFZN	1.0000	
M17	NUT HEX	7392600011	6N-2-6 MFZN	1.0000	
M18	COUPLING DRUM	3619400300	AL	1.0000	
M19	BOLT HEX	7341500811	6B-1-5X8 MFZN	3.0000	
M20	SPRING BRAKE LEVER	3615109000	SWC D1.0 ZN8-C	1.0000	
M21	PLATE BRAKE AS	3614517400	ASSÖY,4.0KG	1.0000	
M22	ASSY BRAKE WIRE	3619201702	SUS WIRE+PE L260	1.0000	
M23	SCREW TAPPTITE	7272400811	TT3 TRS 4X8 MFZN	1.0000	
M24	HARNESS EARTH MOTOR	3612756000	4010 S-MOTOR L=450	1.0000	
M25	UNIT MOTOR SPIN	3618947000	220V, 60HZ, W1D25UE040	1.0000	L
		3618947100	220-240V, 50HZ, W1D25VE040	1.0000	N, NP, M, MP
		3618947200	120-240V, 60HZ, W1D25LE040	1.0000	S
		3618947300	110-220V, 50HZ, W1D25FE040	1.0000	D
		3618947500	110V, 60HZ, W1D25EE040	1.0000	T, TP
		3618947600	100V, 50/60HZ, W1D25BE040	1.0000	J
M26	SCREW TAPPING	7122401611	T2S TRS 4X16 MFZN	3.0000	
M27	STOPPER UPPER	3615201400	PP	3.0000	

NO.	PART NAME	PART CORD	SPECIFICATION	QÖTY	REMARKS
M28	SPRING CUSHION	3615111900	HSW-3	3.0000	
M29	DAMPER	3616900501	NBR	3.0000	
M30	STOPPER LOWER	3615201300	PP	3.0000	
M31	CORD POWER AS	3611330800	N LFC-3R, 3X0.75, 2.3M, GY	1.0000	
		3611330900	H H05VV-F 3X1.0 2.6M WH	1.0000	
		3611331000	RW-300/500, 3X0.75, 2.3M	1.0000	
		3611331100	- VCTF, 3X0.75, 2.3M	1.0000	
		3611331200	R VCTF, 2X1.25, 2.3M, GY	1.0000	
		3611331300	U VDFT, 3X0.75, 2.3M, GY	1.0000	
		3611331400	- H05VV-F, 3X0.75, 2.3M, GY	1.0000	
		3611331500	P VDFT, 3X0.75, 2.3M, GY	1.0000	
		3611331600	- H05VV-F, 3X0.75, 2.3M, BK	1.0000	
		3611331700	A-VCTFK, 2X0.75, 2.3M GY	1.0000	
		3611331800	F H05VV, 3X0.75, 2.3M, BK	1.0000	
		3611331900	N LFC-3R 3X0.75, 2.3M, GY	1.0000	
		3611332000	Z H05VV-F, 3X0.75, 2.3M, BK	1.0000	
		3611332100	T VCTFK, 2X0.75, 2.3M GY	1.0000	
M32	HOSE DRAIN I	3613226400	LD-PE	1.0000	
M33	UNIT DRAIN PUMP	3618958300	ASK0LL 220-240V/50HZ-TWIN	1.0000	NP, MP
		3618958700	ASK0LL 110-120V/60HZ-TWIN	1.0000	TP
M34	HARNESS PUMP	3612787600	MSF20/0.18 2P+250FLAG L=500	1.0000	
M35	FIXTURE PUMP	3612005500	PP	1.0000	
M36	SCREW TAPPING	7122402011	T2S TRS 4X20 MFZN	1.0000	
M37	WASHER PLAIN	7400108411	PW-1-8.4 MFZN	1.0000	