

Service Manual

Washing Machine

**Model: DW-2500 / 2510 / 2520
DW-2530 / 2540 (P)**



✓ **Caution**

: In this Manual, some parts can be changed for improving, their performance without notice in the parts list. So, if you need the latest parts information, please refer to PPL(Parts Price List) in Service Information Center (<http://svc.dwe.co.kr>).

DAEWOO ELECTRONICS CO., LTD.

[http : //svc.dwe.co.kr](http://svc.dwe.co.kr)

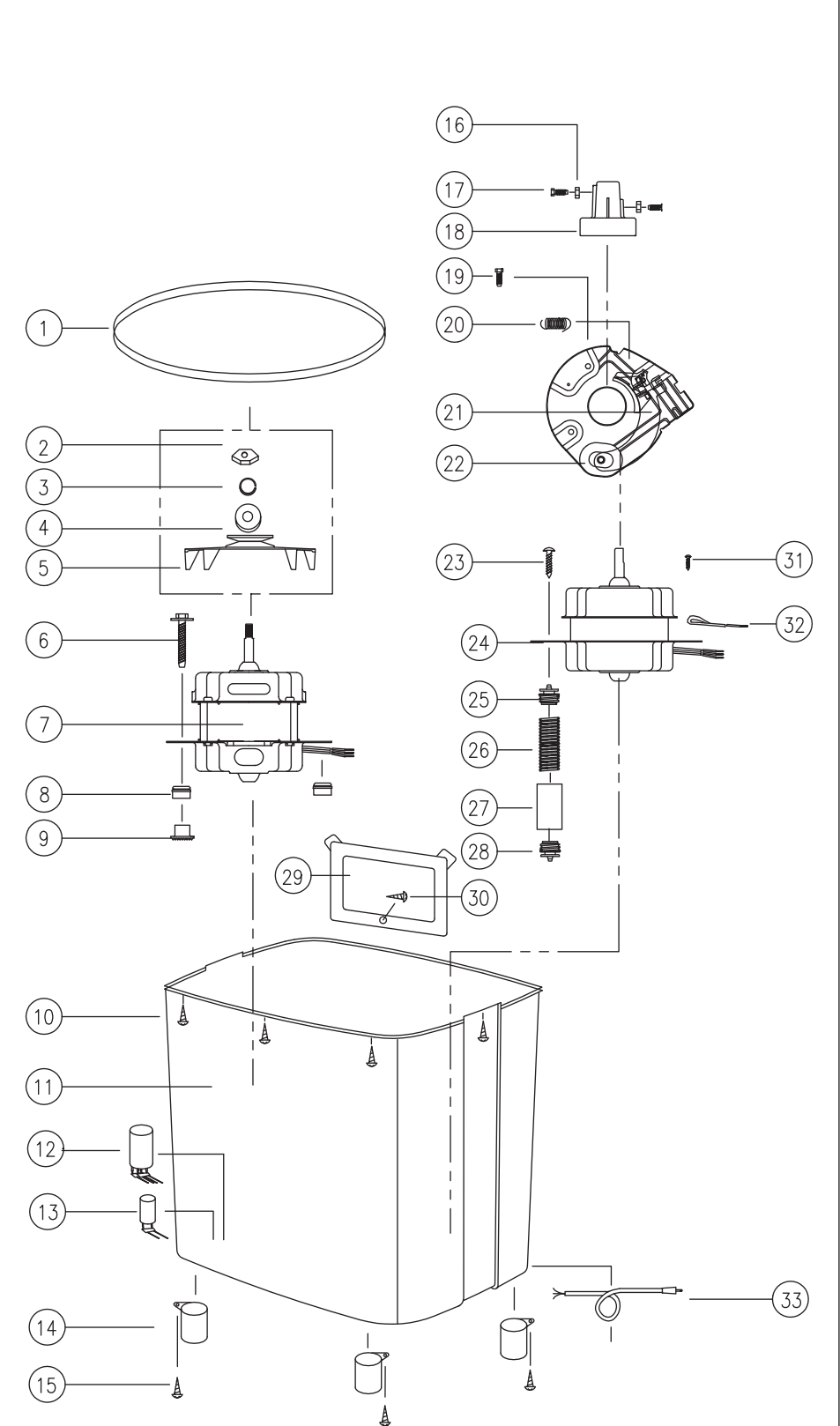
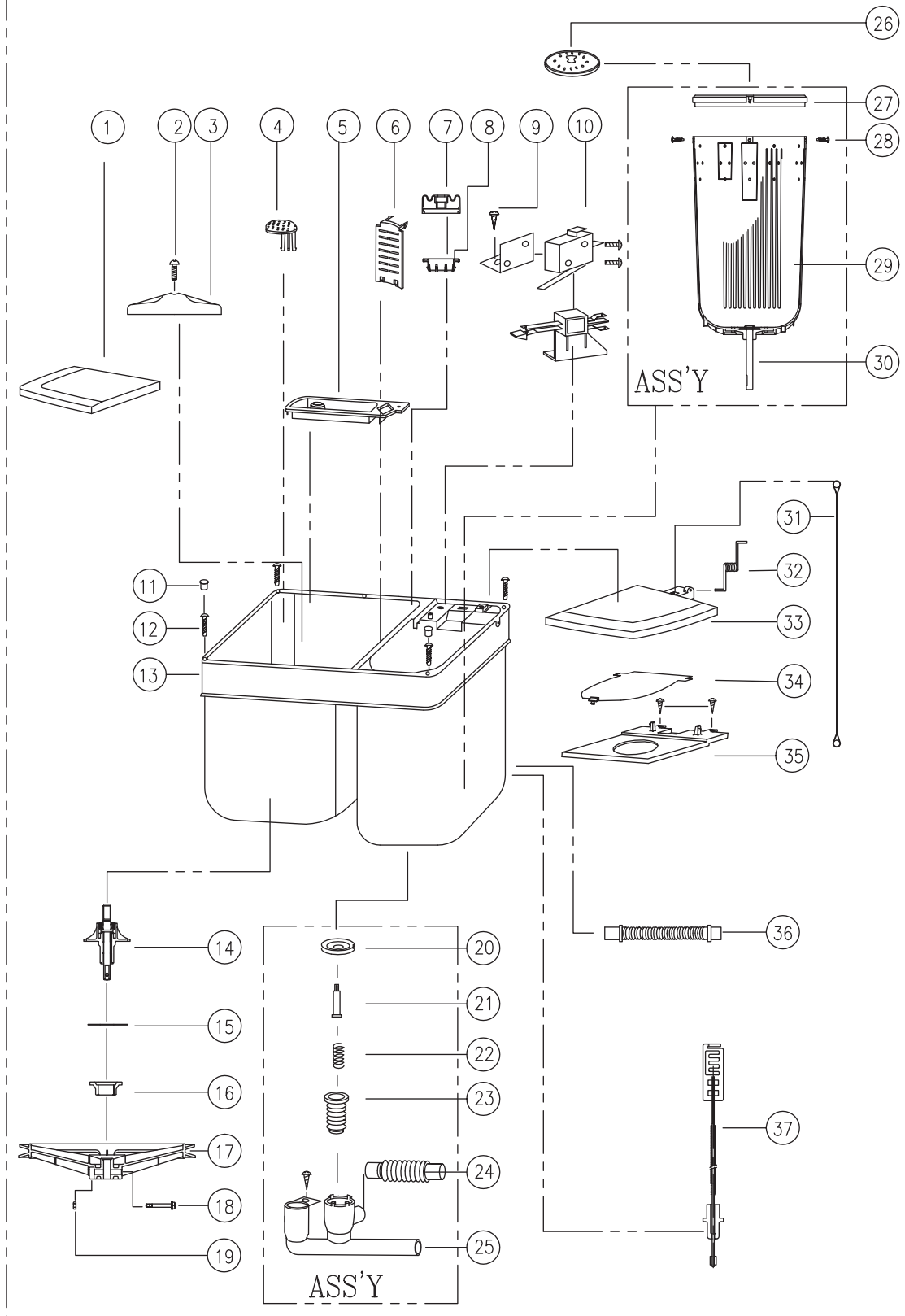
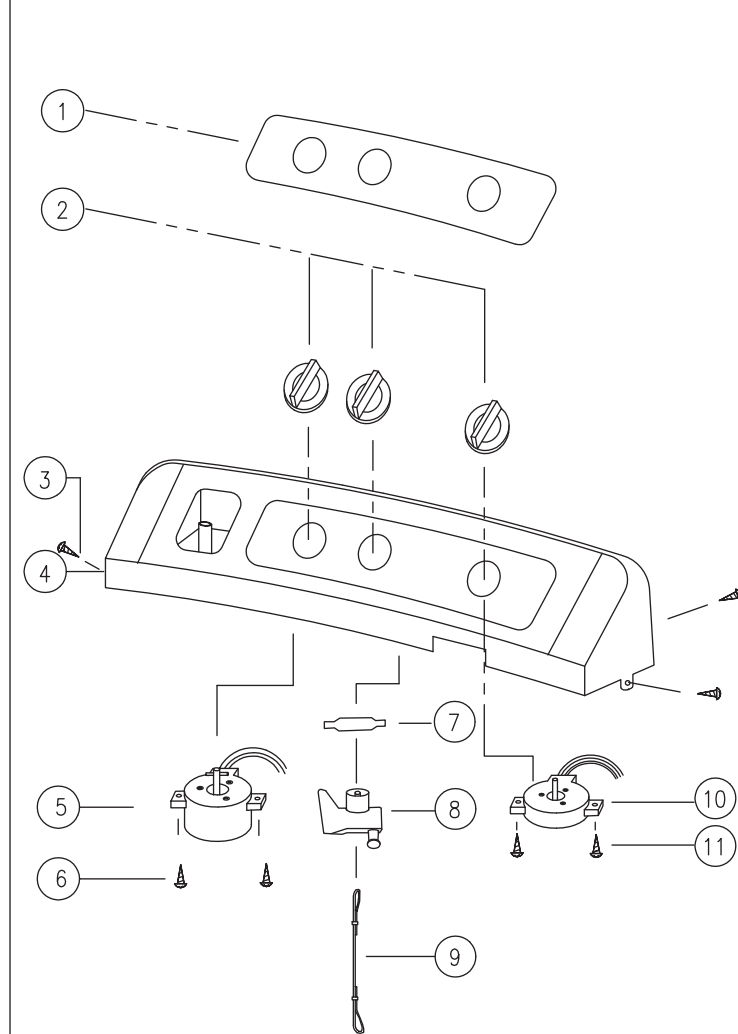
Nov. 2000

DAEWOO

PANEL ASSY

TUB ASSY

BASE ASSY



PANEL ASSY

✓ **Caution :** In this Service Manual, some parts can be changed for improving, their performance without notice in the parts list. So, if you need the latest parts information, please refer to PPL (Parts Price List) in Service Information Center (<http://svc.dwe.co.kr>)

NO	PART CODE	PART NAME	Q'TY	MATERIAL	REMARKS
1	3611602801	DECORATOR	1	PET FILM 0.188T	DWM-2520
	3611604901				DWM-2530
2	3613400502	KNOB	3	ABS	"DWM-2520,2530,2540"
	450BA23002				"DWM-2500,2510"
3	7122401411	SCREW TAPPING	3	T2S TRS 4*14 MFZN	
4	3610065010	PANEL	1	PP	DWM-2530
	3614209900			HIPS	DWM-2540
	3614202700				DWM-2520
	3614200800				DWM-2510
	3614201000				DWM-2500
5	3619900101	TIMER WASH	1	"SAN,S-K51A"	"DWM-2530,2520,2510"
	3619900110			"PC,S-K51C"	
	450BA47001			"SAN,S-K25A"	"DWM-2500,2540"
	450BA47031			"PC,S-K25C"	
6	7122401411	SCREW TAPPING	2	T2S TRS 4*14 MFZN	
7	4509A07050	SPRING PLATE	1	-	
8	3613700300	LEVERCONTROL	1	POM	"DWM-2530,2520"
	3613700900				"DWM-2510,2500,2540"
9	3617802000	LINK VALVE	1	"PP,620MM"	"DWM-2500,2540"
	3617802100			"PP,644MM"	DWM-2510
	3617802200			"PP,636MM"	"DWM-2520,2530"
10	7341500811	TIMER SPIN	1	"SAN,S-2510A"	"DWM-2530,2520,2510"
	3619400901			"PC,S-251B"	
	3619400300			"SAN,S-2500A"	"DW-2500,2540"
	3616000703			"PC,S-2500B"	
11	7122401411	SCREW TAPPING	2	T2S TRS 4*14 MFZN	

TUB ASSY

✓ **Caution** : In this Service Manual, some parts can be changed for improving, their performance without notice in the parts list.
So, if you need the latest parts information, please refer to PPL (Parts Price List) in Service Information Center
(<http://svc.dwe.co.kr>)

NO	PART CODE	PART NAME	MATERIAL	REMARKS	Q'TY
1	3611406600	COVER WASH	PP	"DWM-2530,2540"	1
	3611702900		HIPS	DWM-2520	
	450BA35010			"DWM-2500,2510"	
2	3616002901	SPECIAL SCREW	SUS304	-	1
3	450AA32003	PULSATOR AS	PP(INSET)	"DWM-2500,2510,2520,2530,2540"	1
4	450M705030	DRAIN STRAINER	PP		1
5	3610301800	BASE WATER SUPPLY	PP	"DWM-2530,2540"	1
	450BA66010			"DWM-2500,2510,2520"	
6	450BA40010	FILTER	PP	"DWM-2530,2540"	1
	3611902900			"DWM-2500,2510,2520"	
7	3616401200	BELLOWS	NBR		1
8	3612005000	FIXTURE BELLOWS	PP		1
9	7122401411	SCREW TAPPING	T2S TRS 4*14		1
10	3619000400	SWITCH SAFETY AS	"15A,250VAC"		1
	3619044900		LIP TYPE		
11	3610909400	CAP VALVE	PP		1
12	71224016114	SCREW	T2 TRS 4X16	"DWM-2530,2540"	4
13	3618801400	TUB	PP	"DWM-2530,2540"	1
	450BA05010			"DWM-2500,2510,2520"	
14	3611103000	CASE AS	-		1
15	3612300500	GASKET	NBR		1
16	3616000300	SPECIAL NUT	FRPP		1
17	36184015000	PULLEY PULSATOR	FRPP	"DWM-2500,2510,2520,2530,2540"	1
18	3616008300	SPECIAL BOLT	SM18C+SILOCK		1
19	7392050611	NUT PULLEY	6N-2-6		1
20	3610909400	CAP VALVE	PP		1
21	3615406700	VALVE ROD	PP		1
22	4505C06022	SPRING VALVE	SWC WR 1.0D		1
23	4509A06043	BELLOWS	NR		1
24	4509A06072	TUB DRAIN HOSE	PE		1
25	450BA06050	JOINT	PP		1
26	3611417000	SAFETY COVER	LDPE	"DWM-2500,2510,2520,2530,2540"	1
27	3614602100	RING BASKET	PP		1
28	7122401211	SCREW TAPPING	T2 TRS 4*12		1
29	3619102900	SPIN BASKET	PP		1
30	3614515401	PLATE SHAFT AS	"AL+SUS304,108MM"		1
31	3613800910	LINK BRAKE	"PP, 5*0.7*392MM"	"DWM-2500,2510,2520"	1
	3617803000		PP	"DWM-2530,2540"	
32	450BA01040	SPRING COVER	HSW3		1

✓ **Caution** : In this Service Manual, some parts can be changed for improving, their performance without notice in the parts list.
 So, if you need the latest parts information, please refer to PPL (Parts Price List) in Service Information Center
 (<http://svc.dwe.co.kr>)

NO	PART CODE	PART NAME	MATERIAL	REMARKS	Q'TY
33	3611704700	DOOR SPIN	PP	"DWM-2530,2540"	1
	3611703000		HIPS	DWM-2520	
	450BA35010			"DWM-2500,2510"	
34	3611704000	COVER INNER	PP		1
35	3614507100	PLATE TOP	PP	"DWM-2530,2540"	1
	450BA33010			"DWM-2500,2510,2520"	
36	3613208801	DRAIN HOSE	"PE, L=620"	"DWM-2530,2540"	1
	4506A56001		"PE, L=755"	"DWM-2500,2510,2520"	
37	3610004203	ASSY BRAKE WIRE	"SWC,L=252"	"DWM-2500,2510,2520,2530,2540"	1

BASE ASSY

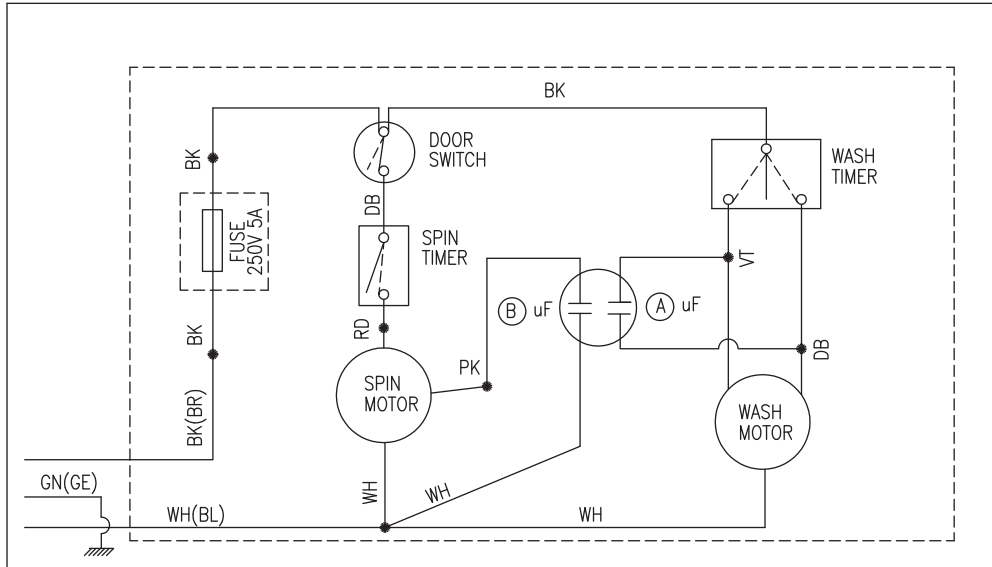
✓ **Caution :** In this Service Manual, some parts can be changed for improving, their performance without notice in the parts list.
So, if you need the latest parts information, please refer to PPL (Parts Price List) in Service Information Center
(<http://svc.dwe.co.kr>)

NO	PART CODE	PART NAME	MATERIAL	REMARKS	Q'TY
1	450M700020	V-BELT	M-32		1
2	7392800011	NUT HEX	M8-P1.25		1
3	7401008011	WASHER SPRING	SW-8 MFZN		1
4	7400108411	WASHER PLAN	"PW-1-8.4, MFZN"		1
5	3618431800	PULLEY MOTOR	50HZ	"2.5KG(NE,ME,DE)"	1
	3618431700		60HZ	"2.5KG(LE,SE)"	
6	3616017010	SPECIAL SCREW	T2 TRS 4*35 MFZN		3
7	3964310940	MOTOR WASH	"220V,50/60HZ"		1
	450AC40012		"240V,50HZ"		
	450AF40011		"110/220V,50HZ"		
	450AB40012		"127/220V,60HZ"		
	3964130401		"100V,50/60HZ"		
	450AD40012		"110V, 60HZ"		
8	450M712020	CUSHION MOTOR-WA	NR		3
9	450M712010	CUSH SUPPORT PLT	PP		1
10	3618431800	SCREW	T2 PAN 4X14	"DWM-2500,2510,2520"	6
11	3610301700	BASE	PP	"DWM-2530,2540"	1
	450BA34010			"DWM-2500,2510,2520"	
12	3618957140	UNIT CAPACITOR AS	6.5/2.6UF	"220V,50/60HZ, 240V/50HZ"	1
	3618942210		24.8/9UF	110V/60HZ	1
12	450E411080	CAPATOR WASH	16*2UF	"110/220V,50HZ"	1
	450E411110		10.4*2UF	"127/220V,60HZ"	
	450AJ11010		20.8*2UF	"100,50/60HZ"	
13	450E411050	CAPATOR SPIN	12.4UF	"100V,50/60HZ, 100/220V,50HZ"	1
	4505411090		7.6UF	"127/220V,60HZ"	1
14	3611701000	LEG	PP	"DWM-2530,2540"	4
	450BA34020			"DWM-2500,2510,2520"	
15	7122401411	SCREW TAPPING	T2 TRS 4*14		4
16	7393600011	NUT HEX	6N-3-6 MFZN		2
17	7342602011	BOLT HEX	6B-2 6*20		2
18	3619400300	DRUM COUPLING	AL		1
19	7341500811	BOLT HEX	6B-1-5*8 MFZN		3
20	3615109000	SPRING BRAKE	"SWC ZN8-C, D1.0"		1
21	3613701100	LEVER BRAKE	SPG		1
22	3614515700	FIX PLT BRAKE	GA		1
23	7122401611	SCREW	T2 TRS 4*16		3
24	3964310802	MOTOR SPIN	"220V,50/60HZ"		1
	450AC41003		"240V,50HZ"		
	450AF41002		"110/220,50HZ"		
	450AB41002		"127/220V,60HZ"		
	3964130501		"100V,50/60HZ"		
	450AD41003		"110V,60HZ"		

✓ **Caution :** In this Service Manual, some parts can be changed for improving, their performance without notice in the parts list.
 So, if you need the latest parts information, please refer to PPL (Parts Price List) in Service Information Center
 (<http://svc.dwe.co.kr>)

NO	PART CODE	PART NAME	MATERIAL	REMARKS	Q'TY
25	3964130501	STOPPER TOP	PP		1
26	3615100101	SPRING CUSHION	PP(JI-360)		1
27	3610106400	ABSORBER	SBS		1
28	450M714040	STOPPER UNDER	PP		1
29	3611407100	BACK COVER	PP(J-380A)	"DWM-2530,2540"	1
	450BA00010			"DWM-2500,2510,2520"	
30	7122401411	SCREW TAPPING	T2 TRS 4*14 MFZN		1
31	7272400811	SCREW TAPPTITE	TT3 TRS 4*8 MFZN		1
32	3612701011	HARNESS	"GR/YE, L=650MM"		1
33	WUK43K763-	POWER CORD		CP-2PIN	1
	W-V15N763-			3CORE	
	3611335400			EP-3PIN	
	WPK43K763-			BS-1363	
	3613224210			SOUTH AFRICA	
	3611335900			PLAT 2PIN	
	3611301710			EU-2PIN	
	WWK43K763-			INDIA 3PIN	

A. Wiring Diagram (Single Voltage)



B. Wiring Diagram (Dual Voltage)

