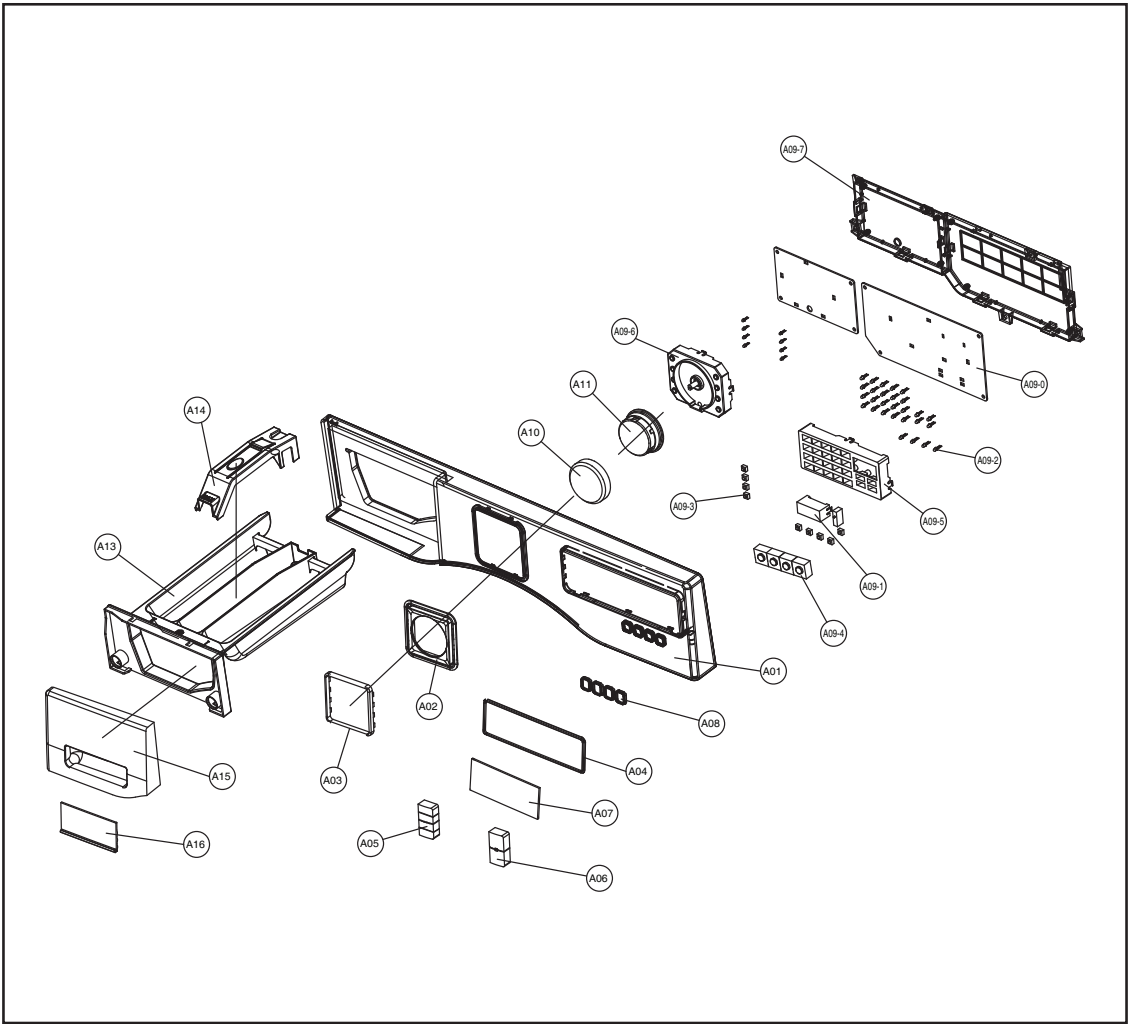


3. PARTS LIST BY ASS'Y

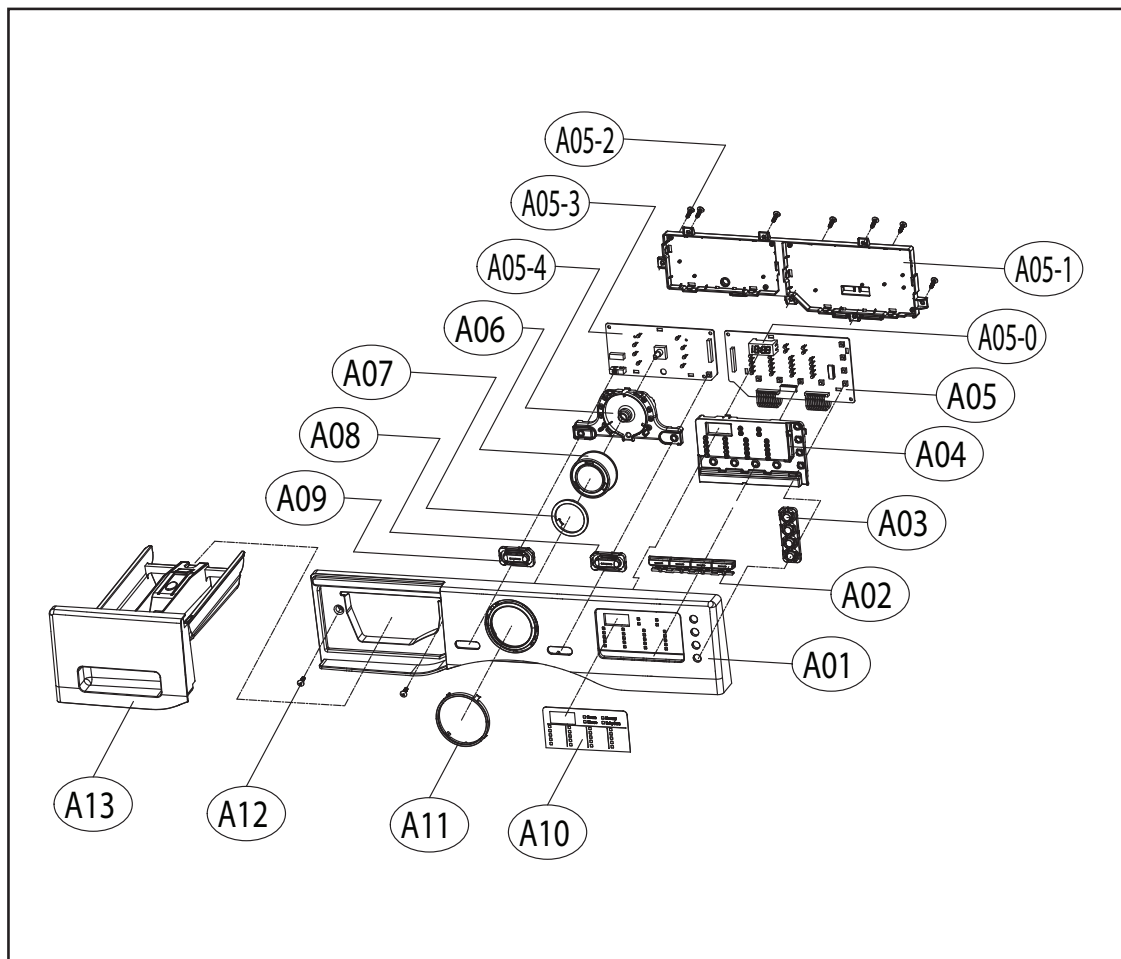
1. PANEL AS

■ 1st Model

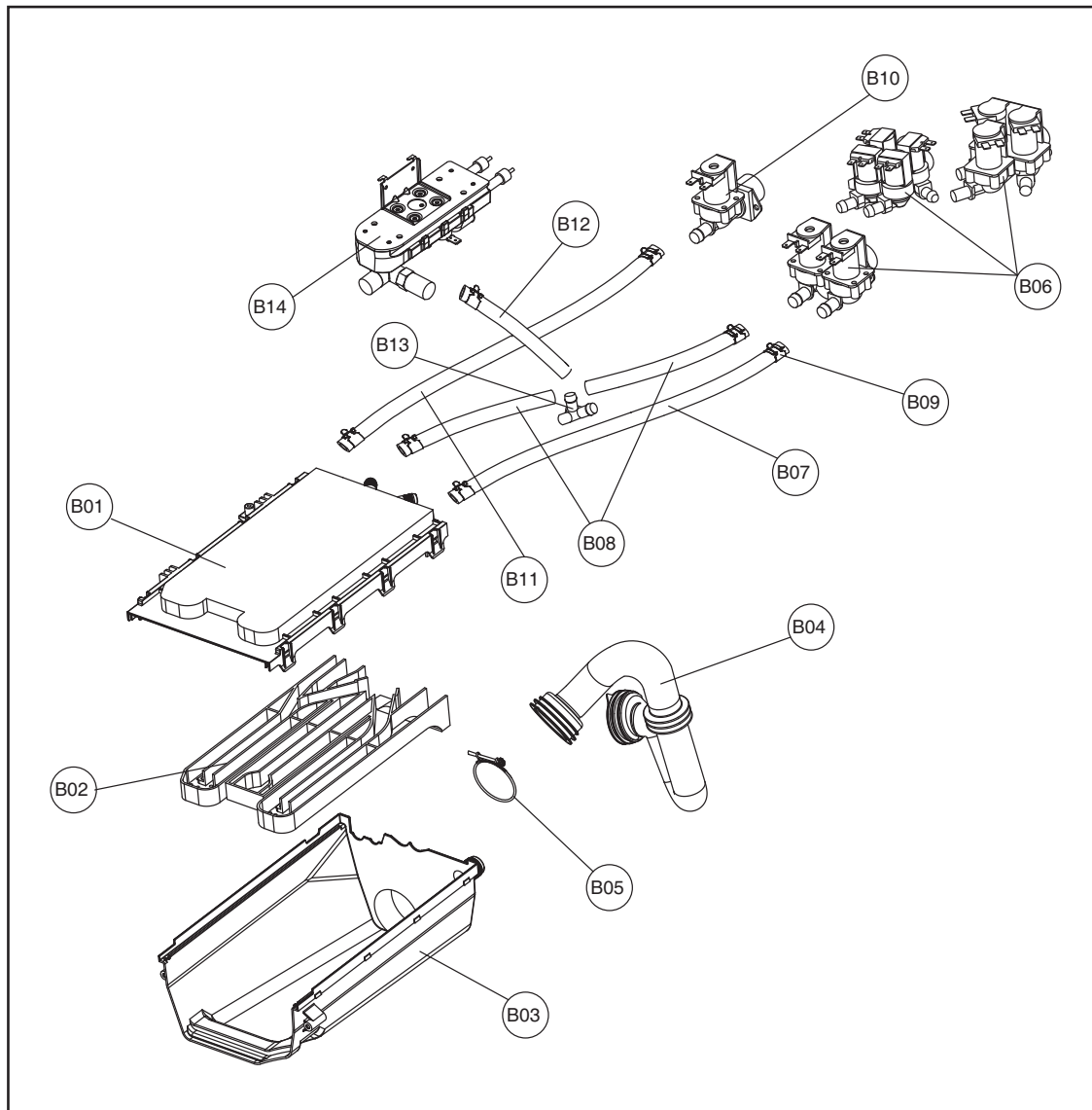


2. PANEL F AS

■ 2st Model

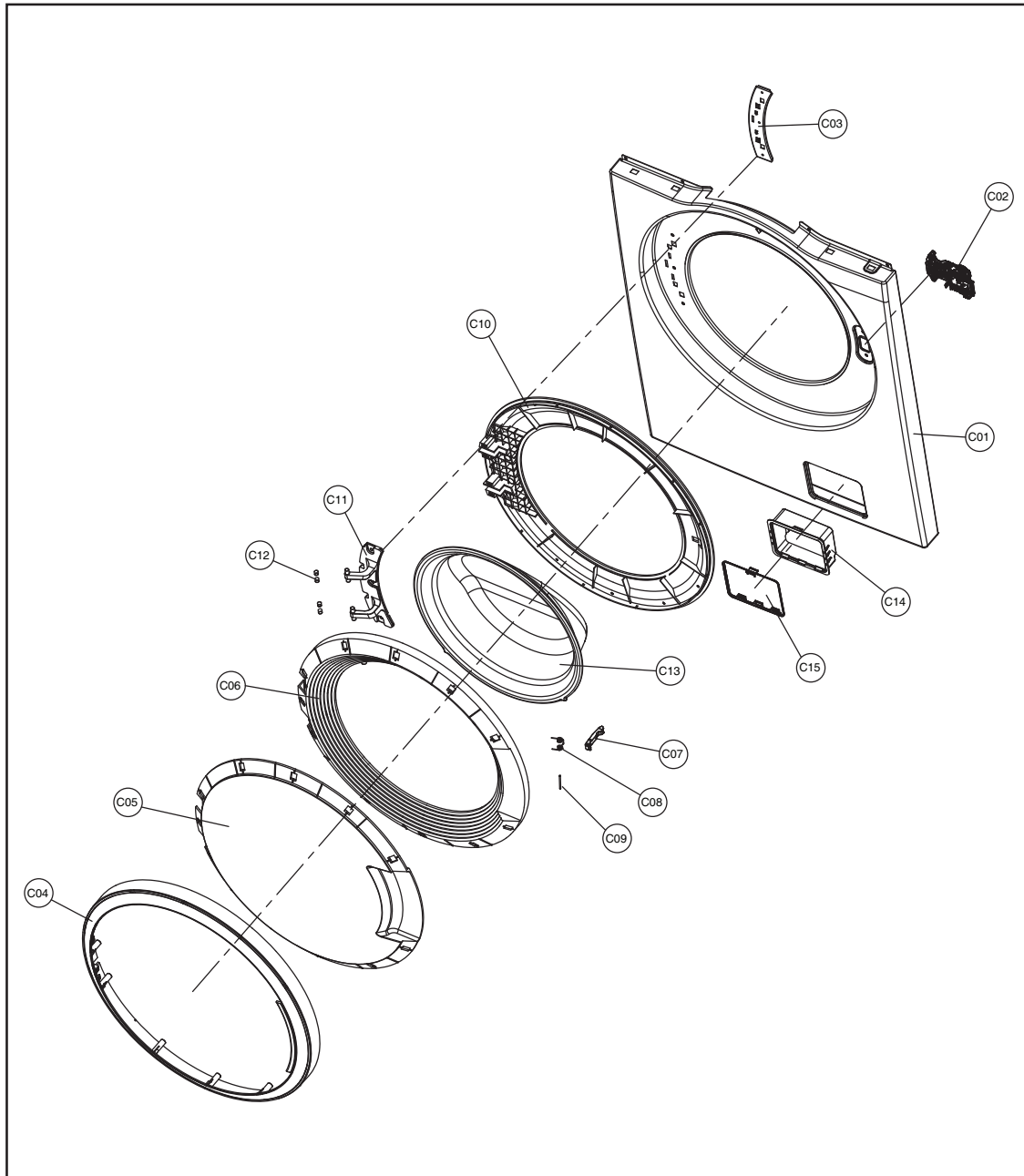


3. INLET BOX AS



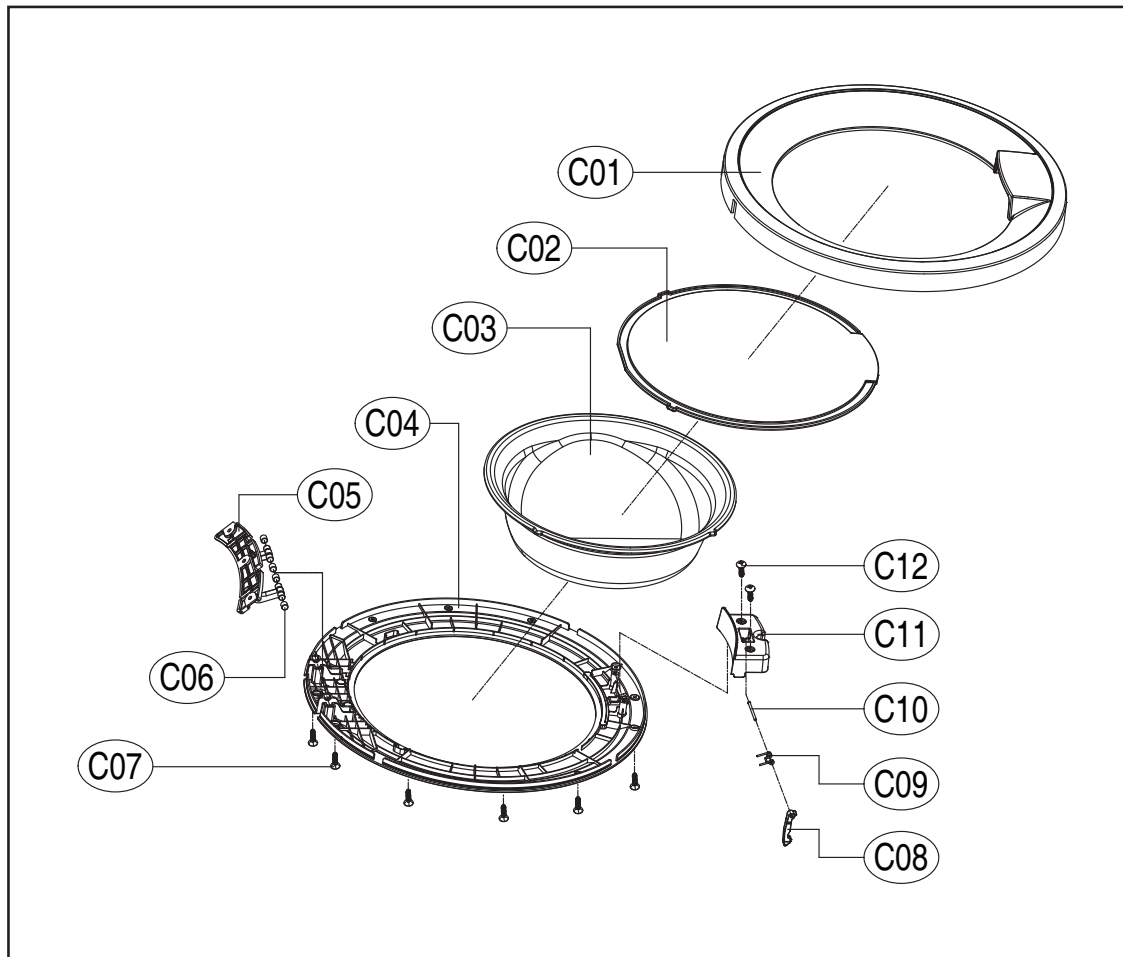
4. CABINET F ASSY

■ 1st Model

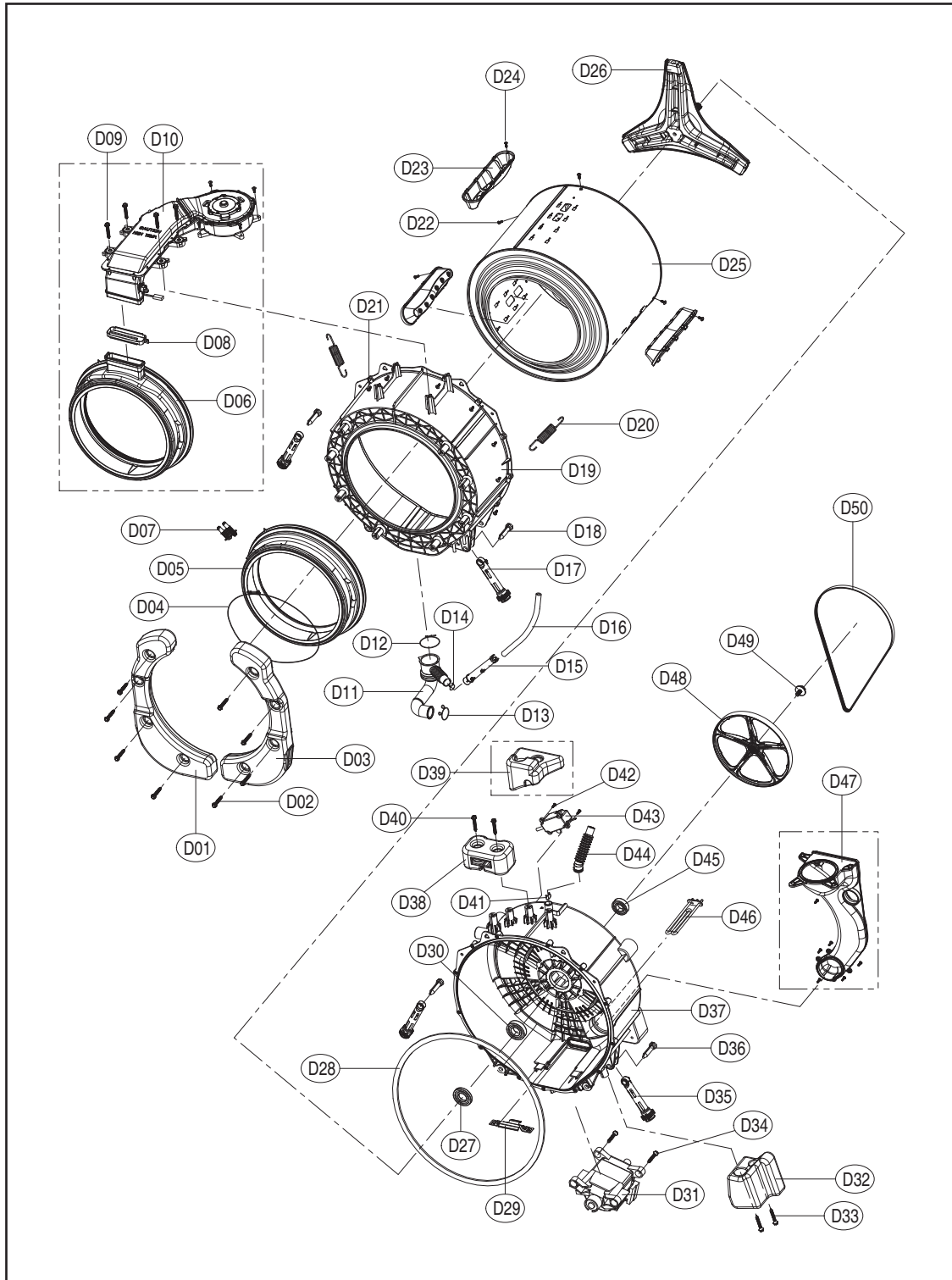


5. DOOR AS

■ 2st Model



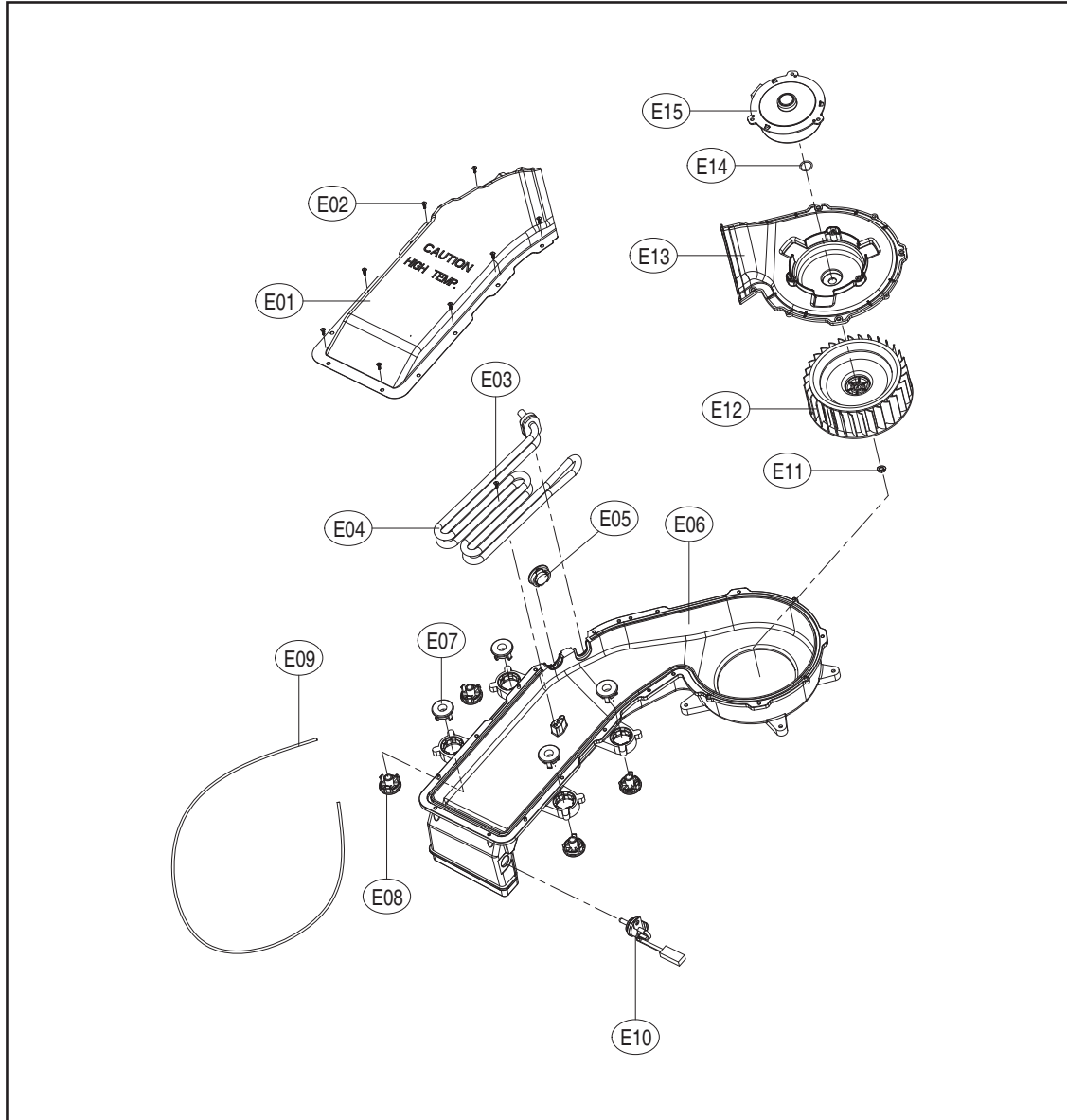
6. TUB ASSY(UNIVERSAL)



This exploded view diagram illustrates the assembly of a motorcycle engine and chassis. The components are labeled as follows:

- Engine and Chassis Components:**
 - D01: Lower engine crankcase
 - D02: Lower engine crankcase
 - D03: Lower engine crankcase
 - D04: Lower engine crankcase
 - D05: Lower engine crankcase
 - D06: Lower engine crankcase
 - D07: Lower engine crankcase
 - D08: Lower engine crankcase
 - D09: Lower engine crankcase
 - D10: Lower engine crankcase
 - D11: Lower engine crankcase
 - D12: Lower engine crankcase
 - D13: Lower engine crankcase
 - D14: Lower engine crankcase
 - D15: Lower engine crankcase
 - D16: Lower engine crankcase
 - D17: Lower engine crankcase
 - D18: Lower engine crankcase
 - D19: Lower engine crankcase
 - D20: Lower engine crankcase
 - D21: Lower engine crankcase
 - D22: Lower engine crankcase
 - D23: Lower engine crankcase
 - D24: Lower engine crankcase
 - D25: Lower engine crankcase
 - D26: Lower engine crankcase
 - D27: Lower engine crankcase
 - D28: Lower engine crankcase
 - D29: Lower engine crankcase
 - D30: Lower engine crankcase
 - D31: Lower engine crankcase
 - D32: Lower engine crankcase
 - D33: Lower engine crankcase
 - D34: Lower engine crankcase
 - D35: Lower engine crankcase
 - D36: Lower engine crankcase
 - D37: Lower engine crankcase
 - D38: Lower engine crankcase
 - D39: Lower engine crankcase
 - D40: Lower engine crankcase
 - D41: Lower engine crankcase
 - D42: Lower engine crankcase
 - D43: Lower engine crankcase
 - D44: Lower engine crankcase
 - D44-1: Lower engine crankcase
 - D45: Lower engine crankcase
 - D46: Lower engine crankcase
 - D47: Lower engine crankcase
- Other Components:**
 - D01: Lower engine crankcase
 - D02: Lower engine crankcase
 - D03: Lower engine crankcase
 - D04: Lower engine crankcase
 - D05: Lower engine crankcase
 - D06: Lower engine crankcase
 - D07: Lower engine crankcase
 - D08: Lower engine crankcase
 - D09: Lower engine crankcase
 - D10: Lower engine crankcase
 - D11: Lower engine crankcase
 - D12: Lower engine crankcase
 - D13: Lower engine crankcase
 - D14: Lower engine crankcase
 - D15: Lower engine crankcase
 - D16: Lower engine crankcase
 - D17: Lower engine crankcase
 - D18: Lower engine crankcase
 - D19: Lower engine crankcase
 - D20: Lower engine crankcase
 - D21: Lower engine crankcase
 - D22: Lower engine crankcase
 - D23: Lower engine crankcase
 - D24: Lower engine crankcase
 - D25: Lower engine crankcase
 - D26: Lower engine crankcase
 - D27: Lower engine crankcase
 - D28: Lower engine crankcase
 - D29: Lower engine crankcase
 - D30: Lower engine crankcase
 - D31: Lower engine crankcase
 - D32: Lower engine crankcase
 - D33: Lower engine crankcase
 - D34: Lower engine crankcase
 - D35: Lower engine crankcase
 - D36: Lower engine crankcase
 - D37: Lower engine crankcase
 - D38: Lower engine crankcase
 - D39: Lower engine crankcase
 - D40: Lower engine crankcase
 - D41: Lower engine crankcase
 - D42: Lower engine crankcase
 - D43: Lower engine crankcase
 - D44: Lower engine crankcase
 - D44-1: Lower engine crankcase
 - D45: Lower engine crankcase
 - D46: Lower engine crankcase
 - D47: Lower engine crankcase

8. DUCT B (for dry model)



9. CABINET AS

