

HITACHI

SERVICE MANUAL

No. CZ001

CV-600
CV-610
CV-710

CONTENTS

1. OVERVIEW.....	2
2. ASSEMBLY & DISMANTLING INSTRUCTIONS.....	2
3. CIRCUIT DIAGRAMS.....	5
4. CONSTRUCTIONAL DIAGRAMS.....	7
5. ACCESSORIES.....	10
6. PARTS LIST CV-600.....	11
7. PARTS LIST CV-610.....	12
8. PARTS LIST CV-710.....	13
9. ACCESSORIES PARTS LIST.....	14
10. FINAL TESTS.....	4



SPECIFICATIONS

MODEL	HITACHI CV-600	HITACHI CV-610/710
Voltage (V)	230-240	230-240
Rated power (W)	1200	1200
Peak power (W)	1500	1500
Insulation class	II.	II.
Noise level (dBA)	75	75
Air throughput (l/s)	45	45
Negative pressure (kPa)	25	25

SPECIFICATIONS AND PARTS ARE SUBJECT TO CHANGE FOR IMPROVEMENT

VACUUM CLEANER

JUNE 2000

HHEE

Cylinder Vacuum Cleaners

1. Overview

These vacuum cleaners utilise a double plastic casing. The interior consists of compartments for the storage of paper or textile filters and a motor. Between the rear of the motor and case there is a plastic pressing which serves to reduce noise caused by air flow. All the various components are fitted into the bottom casing which has wheels. This is finished with a top cover. On the top cover there are two lids, one is the dust bag compartment cover and the other covers the accessories. Micro-filters are fitted in the dust bag compartment and in the rear part of the vacuum cleaner. The hose is attached to the lid of the vacuum cleaner.

2. Assembly and Dismantling Instructions

Most of the parts which are illustrated on the construction diagrams have an encircled number. To order a replacement part, identify the item required on the diagram by its number and then refer to the parts list section.

2.1 Dismantling and Assembly of the Panel (12) and Flaps (30) and (31)

Firstly, remove the decorative grille at the rear of the vacuum cleaner by pressing the spring lock upwards, then use a screwdriver and press down two lock pieces on the panel and lift it slightly. Put a screwdriver between the flap and the panel at its left or right edge, slightly lift the panel and pull upwards.

To reassemble the panel, firstly put the two front projections into the cover openings and press down the rear part of the panel. (The pliable points run in the plate of the cover.) Press down the panel at the flaps until you hear a click. The panel is then assembled correctly.

To remove the power and cord retraction flaps, carefully insert a screwdriver between the 'U' shaped pieces and retaining clips on the main moulding and lift up the flap.

NB. A spring is located under each flap!

To reassemble, insert the projection on the flap into the top case and clip the 'U' pieces on to the projections opposite the retaining clips. Press down the flap until a click is heard.

2.2 Dismantling and Reassembling the Lid

Dismantle the panel as described above, remove the hinge pins, then remove the top accessory lid followed by the dust compartment lid by sliding it out

To reassemble, put the dust compartment lid together with the top accessory lid in the hinge plates, insert the hinge pins, then replace the panel.

2.3 Removing and Replacing the Switch

Dismantle the panel and the switch flap, then press the clip under the switch and slide it out from the plate.

To replace, push the switch into the plate.

2.4 Removing the Control Board

Dismantle the panel, take out the control board from the slots and remove all the connections (noting the position of each connector). To replace, follow the reverse procedure. **ATTENTION!** When reassembling, the potentiometer slider and the control knob must be placed in the same extreme position to fit together.

2.5 Dismantling and Reassembling the Cover

Remove the grille, panel, control board and the two lids. Unscrew six screws, remove the switch and its connectors. Pull out a short piece of the supply lead, (use a screwdriver to remove the outlet cover if necessary), remove the clip on top of the outlet cover and pass the supply lead through the outlet and cover, then remove the cover.

To reassemble, pass the supply lead through the cover aperture and outlet. Pass the motor and winder conductors through the cover aperture (also reconnect the small cooling hose). Then put the cover on the casing so that both pressings should fit in well together. Press the trim in the front, between both pressings and screw on the cover. Then click the outlet into the cover. Refit the power plug.

2.6 Removing and Replacing the Supply Lead Winder

Remove the cover, as described previously and remove the winder from the bottom case.

To reassemble, put the winder in the slot in the casing and put the cables into the grips on top of the motor housing.

2.7 Removing and Replacing the Motor

Remove the cover of the vacuum cleaner as previously described, then remove the winder, unscrew the four screws holding the motor cover. Remove the cover, then the motor.

To reassemble, replace the connections, mount dampers, fit front circular seal and the motor in its housing. Check that the mounting of the dampers and seal are correct and then replace motor. When reassembling the motor housing, ensure that the motor cables are not trapped but are fed through the two holes in the housing.

3. Circuit Diagrams

4. Constructional Diagrams

5. Accessories for Hitachi CV-600/610/710

6. List of spare parts for Hitachi CV-600

7. List of spare parts for Hitachi CV-610

8. List of spare parts for Hitachi CV-710

9. Accessories Parts List

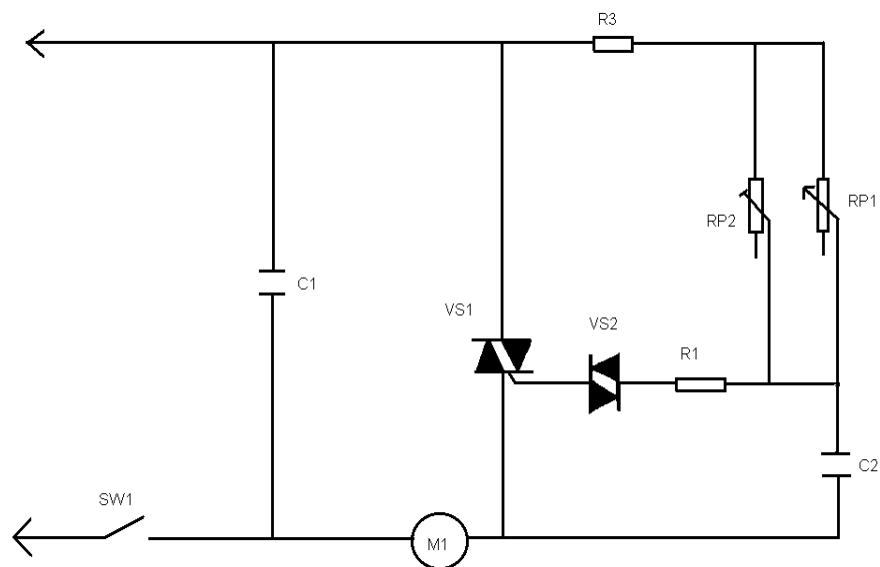
10. Final Tests

10. Final Tests

1. After re-assembly, run the vacuum cleaner for at least 15 minutes without joining the hose to the main body and ensure that there is no abnormal vibration
2. Measure the insulation resistance between the power supply plug and metal surfaces with a 500V DC insulation resistance and ensure that the insulation resistance is not less than 10M ohm.

3. Check the noise level at the motor.
4. Check the operation of the switch button function by switching on and off 3 times.
5. Check the operation of the winder function by retracting the cord 3 times.
6. Check for the presence of foreign matter, this could cause damage to the motor.
7. The dust bag full indicator can be adjusted by attaching the crevice nozzle (item 50) to the hose pipe. Cover the straight (not bevelled) part of the crevice tool with a finger and slide the indicator so that it is in the centre of the viewing aperture.
NB. The slide control on the hose pipe should be closed and the power control should be set at maximum on CV-610 and CV-710.

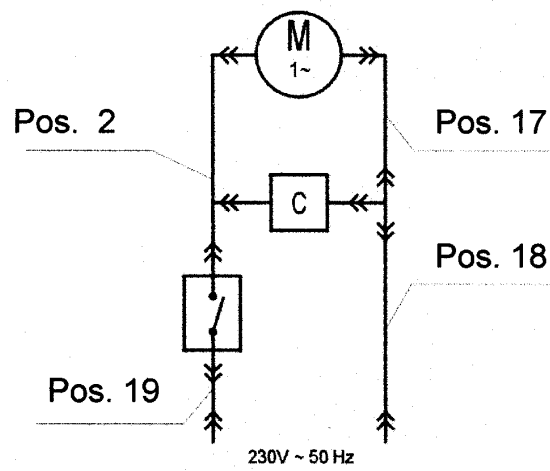
CV-610/CV-710 Power Module Circuit Diagram



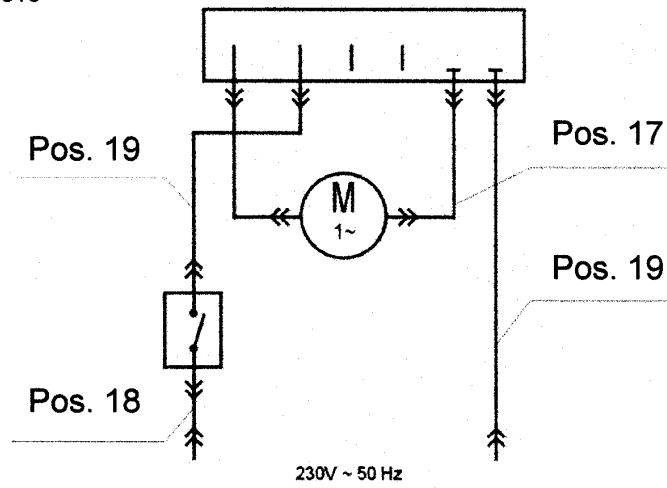
NB. This circuit is only shown for reference, if there is a fault on the module, the module should be replaced.

3. Wiring Diagrams

CV-600

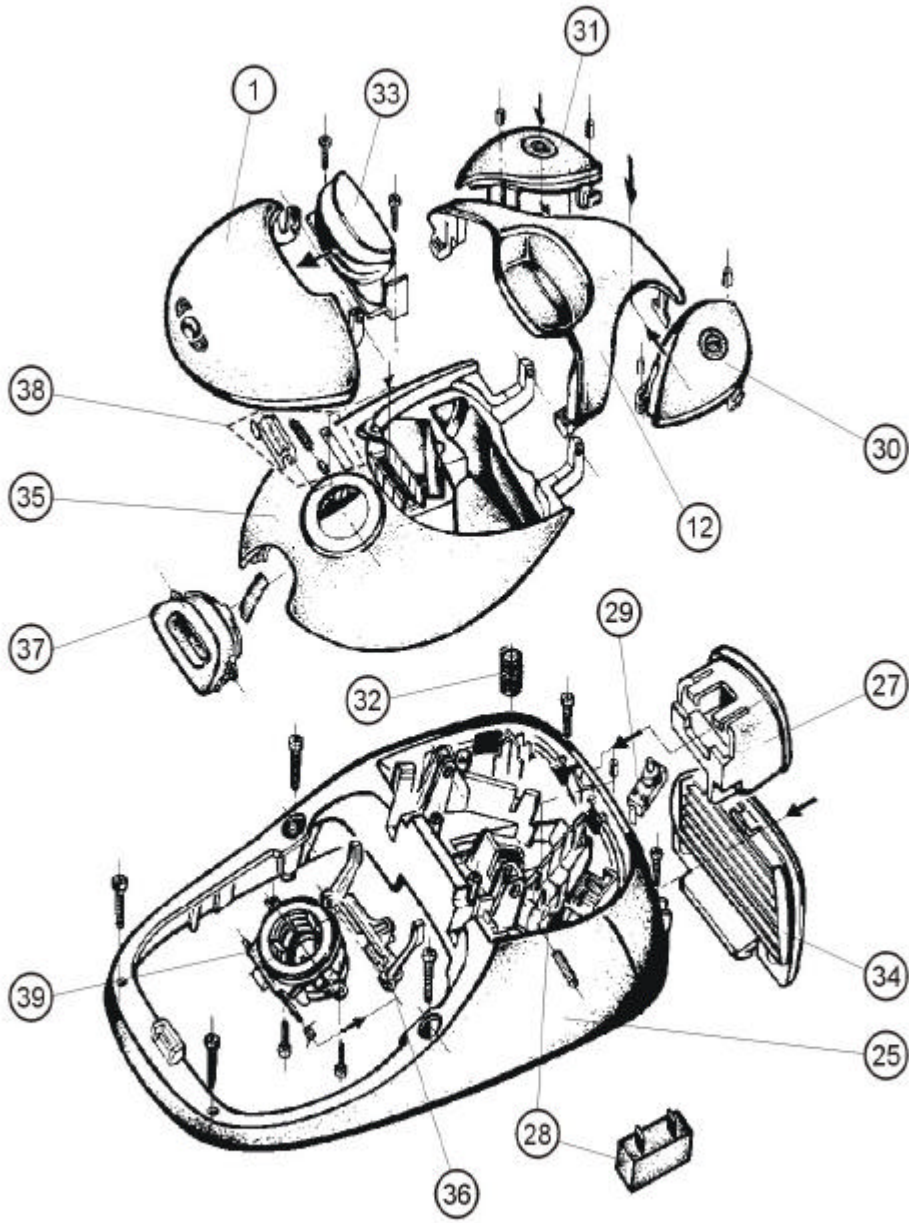


CV-610

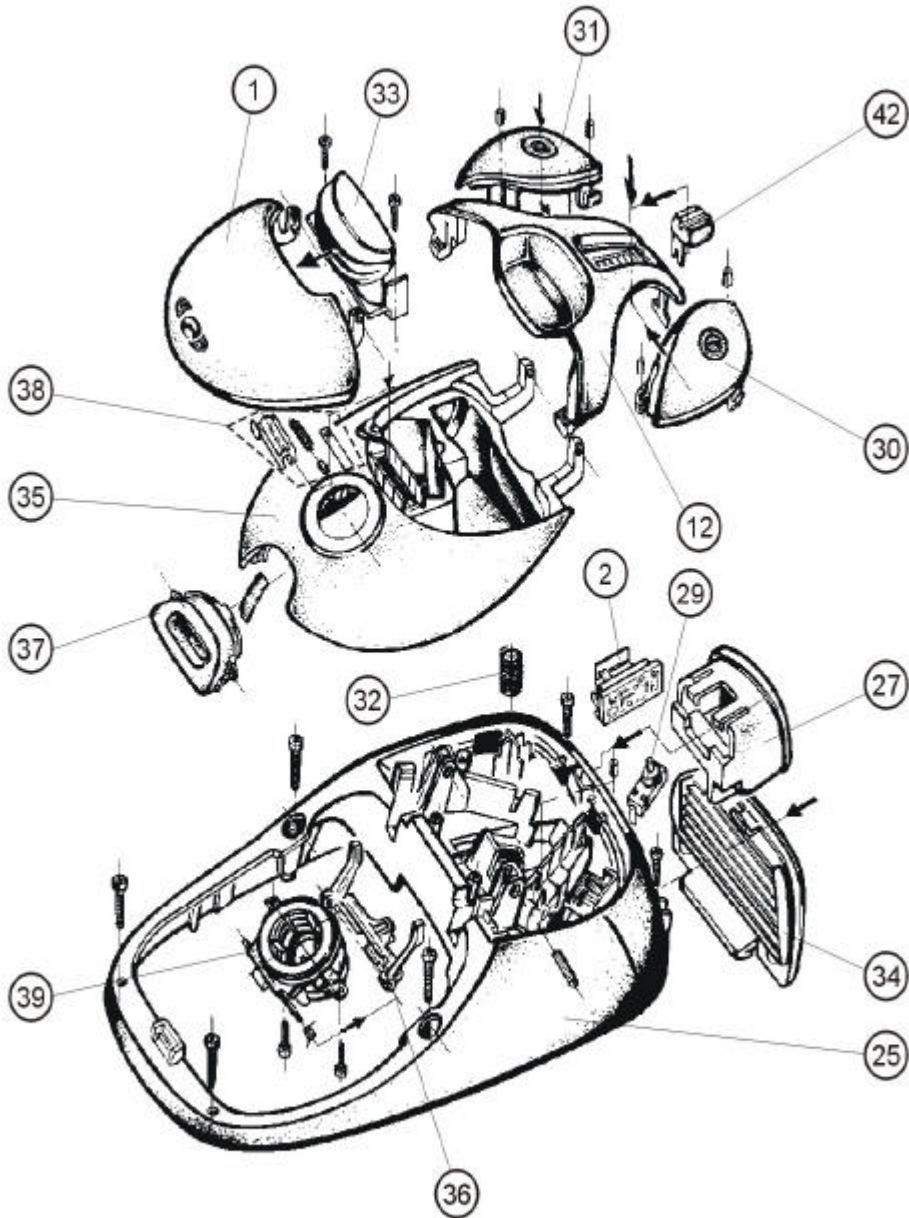


4. Constructional Diagram

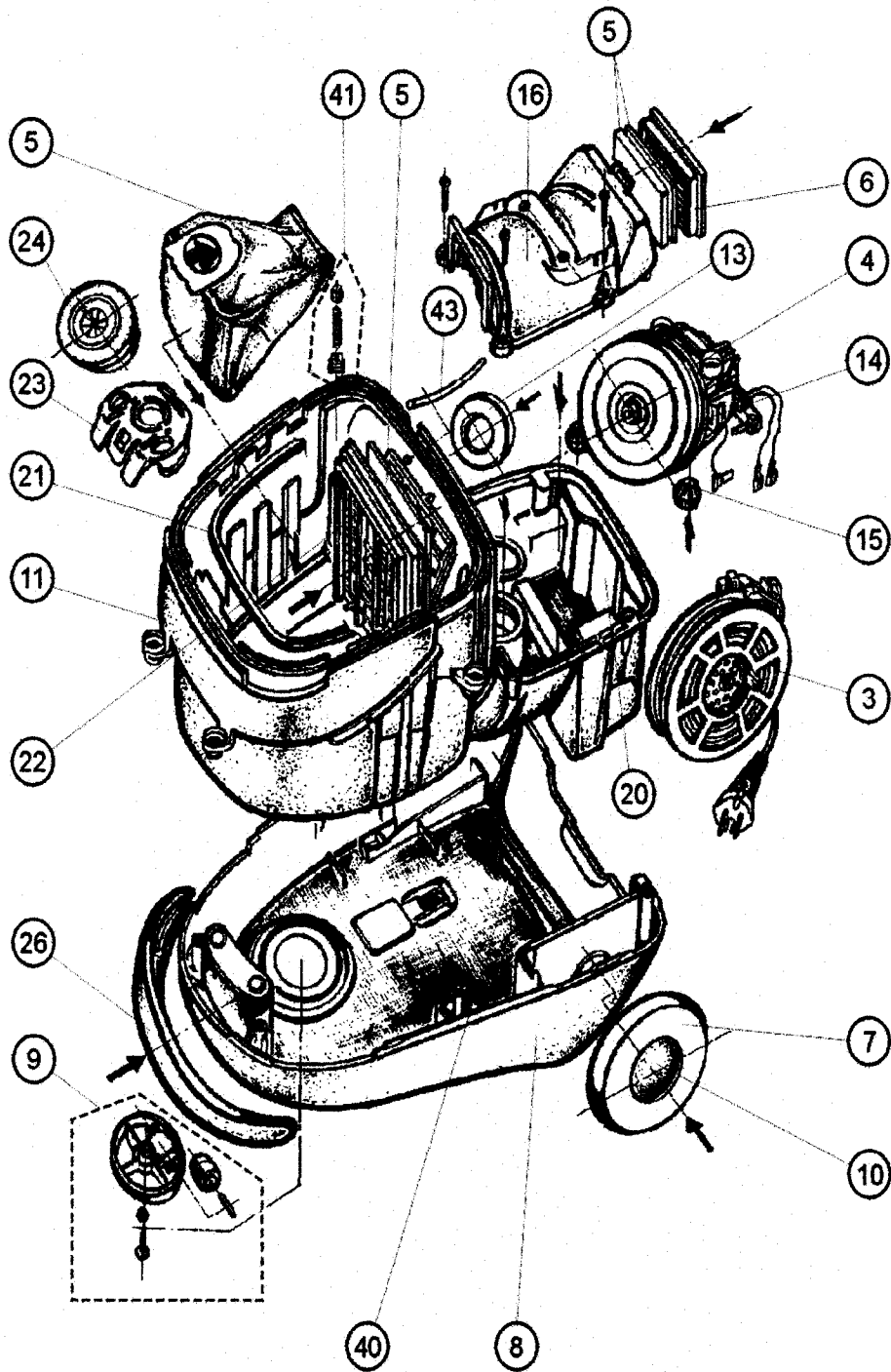
CV-600



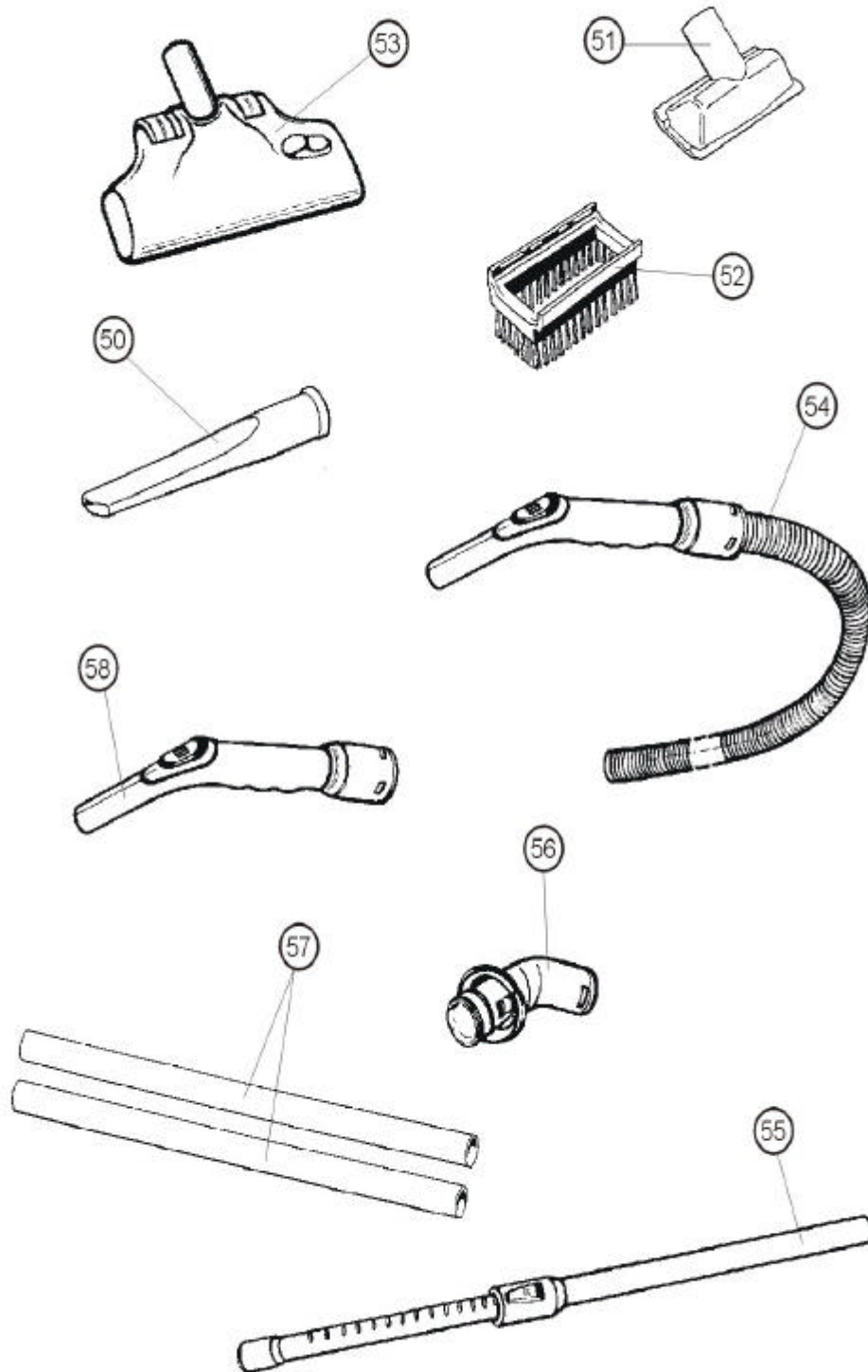
CV-610/710



CV-600 & CV-610



5. Accessories for CV-600/CV-610/CV-710



PARTS LIST FOR CV-600

No.	Part No.	Q'ty	Description	Comments
1.	CVZ 0410 87 590	1	Lid	
2.	CVZ 0410 02 000	1	Bunch	
3.	CVZ 0410 87 021	1	Supply lead winder	
4.	CVZ 1992 80 130	1	Motor	
5.	PB41L	1 pk	Paper bags & filters	
6.	CVZ 0410 87 030	1	Grid	
7.	CVZ 0410 87 041	2	Wheel	
8.	CVZ 0410 87 051	1	Casing	
9.	CVZ 1408 15 002	1	Turntable	
10.	CVZ 0410 87 061	2	Cover	
11.	CVZ 0410 87 070	1	Space	
12.	CVZ 0410 87 081	1	Panel	
13.	CVZ 0410 87 090	1	Gasket	
14.	CVZ 0410 00 132	1	Pad	
15.	CVZ 0403 00 810	4	Damper	
16.	CVZ 0410 87 100	1	Motor-hood	
17.	CVZ 811 130 450	1	Conductor I	
18.	CVZ 811 132 240	1	Conductor II	
19.	CVZ 811 137 284	1	Conductor III	
20.	CVZ 0410 87 110	1	Filler	
21.	CVZ 0410 87 120	1	Peripheral sealing	
22.	CVZ 0410 87 130	1	Inlet grid	
23.	CVZ 0410 87 140	1	Filter Holder	
24.	CVZ 0410 87 150	1	Gasket for filter	
25.	CVZ 0410 87 161	1	Cover	
26.	CVZ 0410 87 171	1	Bar	
27.	CVZ 0410 29 001	1	Outlet segment	
28.	CVZ 98 460 921 5	1	Condenser	
29.	CVZ 98 425 200 4	1	Switch button	
30.	CVZ 0410 87 191	1	Flap L	
31.	CVZ 0410 87 201	1	Flap R	
32.	CVZ 0960 01 080	2	Spring	
33.	CVZ 0410 87 211	1	Handle	
34.	CVZ 0410 87 221	1	Grid	
35.	CVZ 0410 87 231	1	Lid	
36.	CVZ 0410 87 240	1	Fuse	
37.	CVZ 0410 87 251	1	Cap	
38.	CVZ 0410 87 260	1	Signalling (indicator)	
39.	CVZ 0410 87 271	1	Socket	
40.	CVZ 0410 00 540	1	Gasket I	
41.	CVZ 0410 87 280	1	Valve	
-	CVZ 0410 06 007	1	Rating plate	
-	CVZ 0410 00 090	1	Clip for outlet segment	

PARTS LIST FOR CV-610

No.	Part No.	Q'ty	Description	Comments
1.	CVZ 0410 87 369	1	Lid	
2.	CVZ 0410 87 310	1	Control board	
3.	CVZ 0410 87 021	1	Supply lead winder	
4.	CVZ 1992 80 130	1	Motor	
5.	PB41L	1 pk	Paper bags & filters	
6.	CVZ 0410 87 030	1	Grid	
7.	CVZ 0410 87 040	2	Wheel	
8.	CVZ 0410 87 050	1	Casing	
9.	CVZ 1408 15 001	1	Turntable	
10.	CVZ 0410 87 060	2	Cover	
11.	CVZ 0410 87 070	1	Space	
12.	CVZ 0410 87 303	1	Panel	
13.	CVZ 0410 87 090	1	Gasket	
14.	CVZ 0410 00 132	1	Pad	
15.	CVZ 0403 00 810	4	Damper	
16.	CVZ 0410 87 100	1	Motor-hood	
17.	CVZ 811 130 450	1	Conductor I	
18.	CVZ 811 132 284	1	Conductor III	
19.	CVZ 811 132 201	1	Conductor IV	
20.	CVZ 0410 87 110	1	Filler	
21.	CVZ 0410 87 120	1	Peripheral sealing	
22.	CVZ 0410 87 130	1	Inlet-grid	
23.	CVZ 0410 87 140	1	Filter Holder	
24.	CVZ 0410 87 150	1	Gasket for filter	
25.	CVZ 0410 87 160	1	Cover	
26.	CVZ 0410 87 170	1	Bar	
27.	CVZ 0410 29 000	1	Outlet segment	
28.	-----	-----	-----	
29.	CVZ 98 425 200 4	1	Switch button	
30.	CVZ 0410 87 190	1	Flap L	
31.	CVZ 0410 87 200	1	Flap R	
32.	CVZ 0960 01 080	2	Spring	
33.	CVZ 0410 87 210	1	Handle	
34.	CVZ 0410 87 220	1	Grid	
35.	CVZ 0410 87 230	1	Lid	
36.	CVZ 0410 87 240	1	Fuse	
37.	CVZ 0410 87 250	1	Cap	
38.	CVZ 0410 87 260	1	Signalling (indicator)	
39.	CVZ 0410 87 270	1	Socket	
40.	CVZ 0410 00 540	1	Gasket	
41.	CVZ 0410 87 280	1	Valve	
42.	CVZ 0410 87 322	1	Knob	
43.	CVZ 1410 00 280	1	Hose	
-	CVZ 1410 06 036	1	Rating plate	
-	CVZ 0410 00 090	1	Clip for outlet segment	

PARTS LIST FOR CV-710

No.	Part No.	Q'ty	Description	Comments
1.	CVZ 3410 01 01	1	Lid	
2.	CVZ 041087 310	1	Control board	
3.	CVZ 041087 021	1	Supply lead winder	
4.	CVZ 199280 130	1	Motor	
5.	PB41L	1 pk	Paper bags & filters	
6.	CVZ 041087 030	1	Grid	
7.	CVZ 041087 040	2	Wheel	
8.	CVZ 041087 050	1	Casing	
9.	CVZ 1408 15 001	1	Turntable	
10.	CVZ 041087 060	2	Cover	
11.	CVZ 041087 070	1	Space	
12.	CVZ 7410 03 01	1	Panel	
13.	CVZ 041087 090	1	Gasket	
14.	CVZ 041000 132	1	Pad	
15.	CVZ 040300 810	4	Damper	
16.	CVZ 041087 100	1	Motor-hood	
17.	CVZ 811 130 450	1	Conductor I	
18.	CVZ 811 132 284	1	Conductor III	
19.	CVZ 811 132 201	1	Conductor IV	
20.	CVZ 041087 110	1	Filler	
21.	CVZ 041087 120	1	Peripheral sealing	
22.	CVZ 041087 130	1	Inlet-grid	
23.	CVZ 041087 140	1	Filter Holder	
24.	CVZ 041087 150	1	Gasket for filter	
25.	CVZ 041087 160	1	Cover	
26.	CVZ 041087 170	1	Bar	
27.	CVZ 041029 000	1	Outlet segment	
28.	-----	-----	-----	
29.	CVZ 98 425 200 4	1	Switch button	
30.	CVZ 041087 190	1	Flap L	
31.	CVZ 041087 200	1	Flap R	
32.	CVZ 096001 080	2	Spring	
33.	CVZ 3410 00 35	1	Handle	
34.	CVZ 041087 220	1	Grid	
35.	CVZ 041087 230	1	Lid	
36.	CVZ 041087 240	1	Fuse	
37.	CVZ 041087 250	1	Cap	
38.	CVZ 041087 260	1	Signalling (indicator)	
39.	CVZ 041087 270	1	Socket	
40.	CVZ 041000 540	1	Gasket	
41.	CVZ 041087 280	1	Valve	
42.	CVZ 041087 322	1	Knob	
43.	CVZ 141000 280	1	Hose	
-	CVZ 141006 036	1	Rating plate	
-	CVZ 041000 090	1	Clip for outlet segment	
-	CVZ 1410 00 520	1	Pin	
-	CVZ 1408 87 020	1	Textile Filter	

ACCESSORIES PARTS LIST

No.	Part No.	Q'ty	Description	Comments
50.	CVZ 0960 00 025	1	Slot nozzle	
51.	CVZ 0960 00 031	1	Upholstery nozzle	
52.	CVZ 0960 19 001	1	Brush	
53.	CVZ 0963 10 005	1	Floor nozzle CV-600	
-	CVZ 0963 10 006	1	Floor nozzle CV-610	
54.	CVZ 0960 97 070	1	Hose	
55.	CVZ 2960 96 130	1	Telescopic tube	
56.	CVZ 0410 87 290	1	Ending	
57.	CVZ 2960 96 140	1	Metal suction tube	
58.	CVZ 0960 73 000	1	Rotating handle	

HITACHI

Inspire the Next

Hitachi Home & Life Solutions, Inc.
Hitachi Atago Building,
No.15-12, Nishi Shimbashi, 2-chome,
Minato-ku, Tokyo, 105-8410 Japan
Tel: 03 3502 2111

HITACHI EUROPE LTD.

Dukes Meadow
Millboard Road
Bourne End
Buckinghamshire
SL8 5XF

UNITED KINGDOM

Tel: 01628 643000
Fax: 01628 643400
Email: consumer-service@hitachi-eu.com

HITACHI EUROPE S.A.

364, Kifissias Ave. & 1, Delfon Str.
152 33 Chalandri
Athens

GREECE

Tel: 1-6837200
Fax: 1-6835694
Email: service.hellas@hitachi-eu.com

HITACHI EUROPE GmbH

Munich Office
Dornacher Strasse 3
D-85622 Feldkirchen bei München

GERMANY

Tel: +49 -89-991 80-0
Fax: +49 - 89 - 991 80 -224
Hotline: +49 - 180 - 551 25 51 (12ct/min.)
Email: HSE-DUS.Service@Hitachi-eu.com

HITACHI EUROPE S.A.

Gran Via Carlos III, 101 - 1
08028 Barcelona

SPAIN

Tel: 93 409 2550
Fax: 93 491 3513
Email: rplan@hitachi-eu.com

HITACHI EUROPE SRL

Via T. Gulli n.39
20147 MILAN

ITALY

Tel: 02 487861
Fax: 02 48786381
Servizio Clienti
Tel. 02 38073415
Email: customerservice.italy@hitachi-eu.com

HITACHI EUROPE AB

Box 77
S-164 94 KISTA
SWEDEN
Tel: 08 562 711 00
Fax: 08 562 711 11
Email: csgswe@hitachi-eu.com

HITACHI EUROPE S.A.S

Lyon Office
B.P. 45, 69671 Bron Cedex

FRANCE

Tel: 04 72 14 29 70
Fax: 04 72 14 29 99
Email: france.consommateur@hitachi-eu.com

HITACHI EUROPE LTD.

Norwegian Branch Office
Strandveien 18
1366 Dysaker

NORWAY

Tel: 02205 9060
Fax: 02205 9061
Email csgnor@hitachi-eu.com

ITEM N.V./S.A. (INTERNATIONAL TRADE FOR ELECTRONIC MATERIAL & MEDIA N.V./S.A)

UCO Tower – Bellevue, 17
B – 9050 GENT

BELGIUM (for BENELUX)

Tel: 09 230 48 01
Fax: 09 230 96 80
Email: hitachi.item@skynet.be