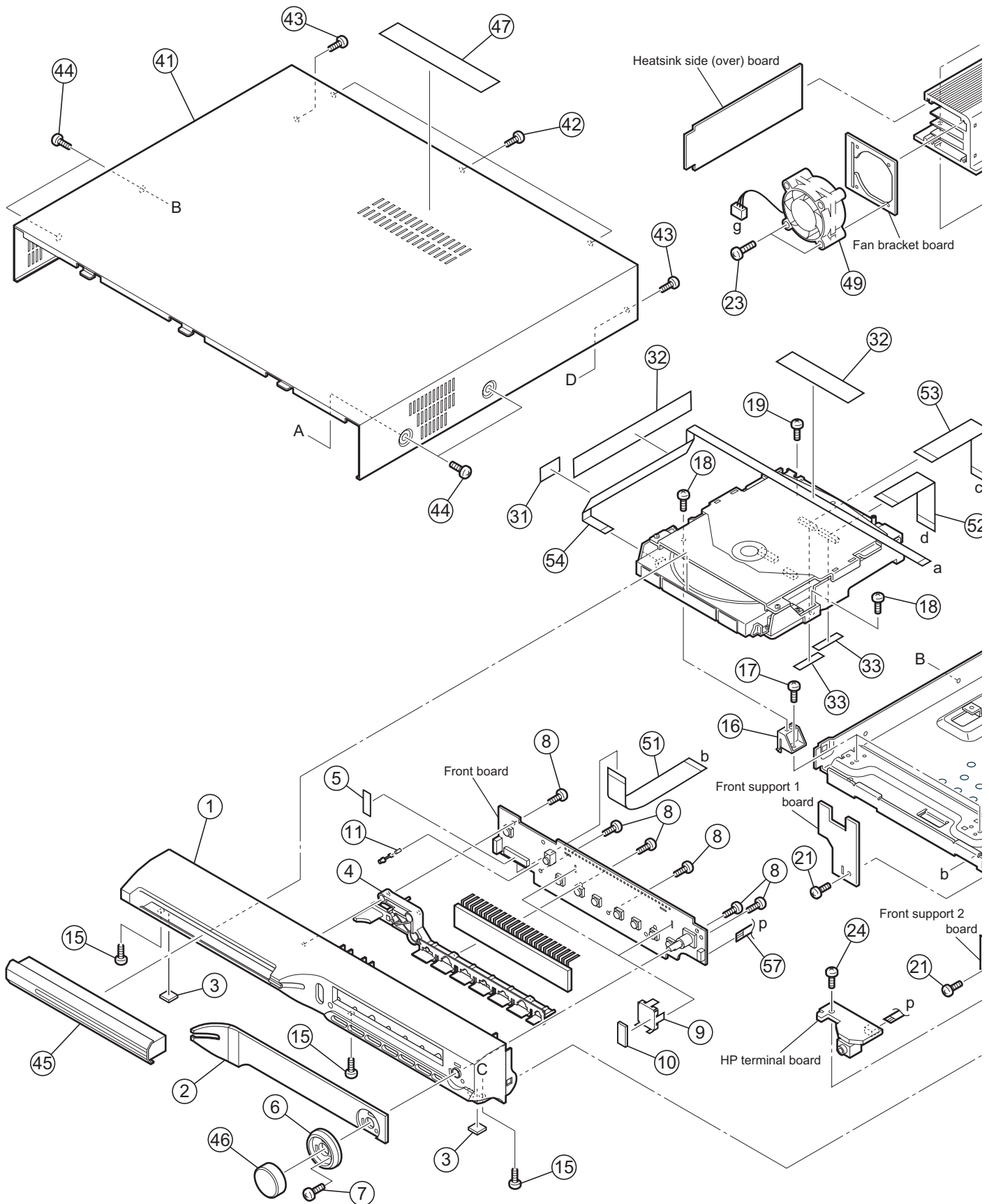
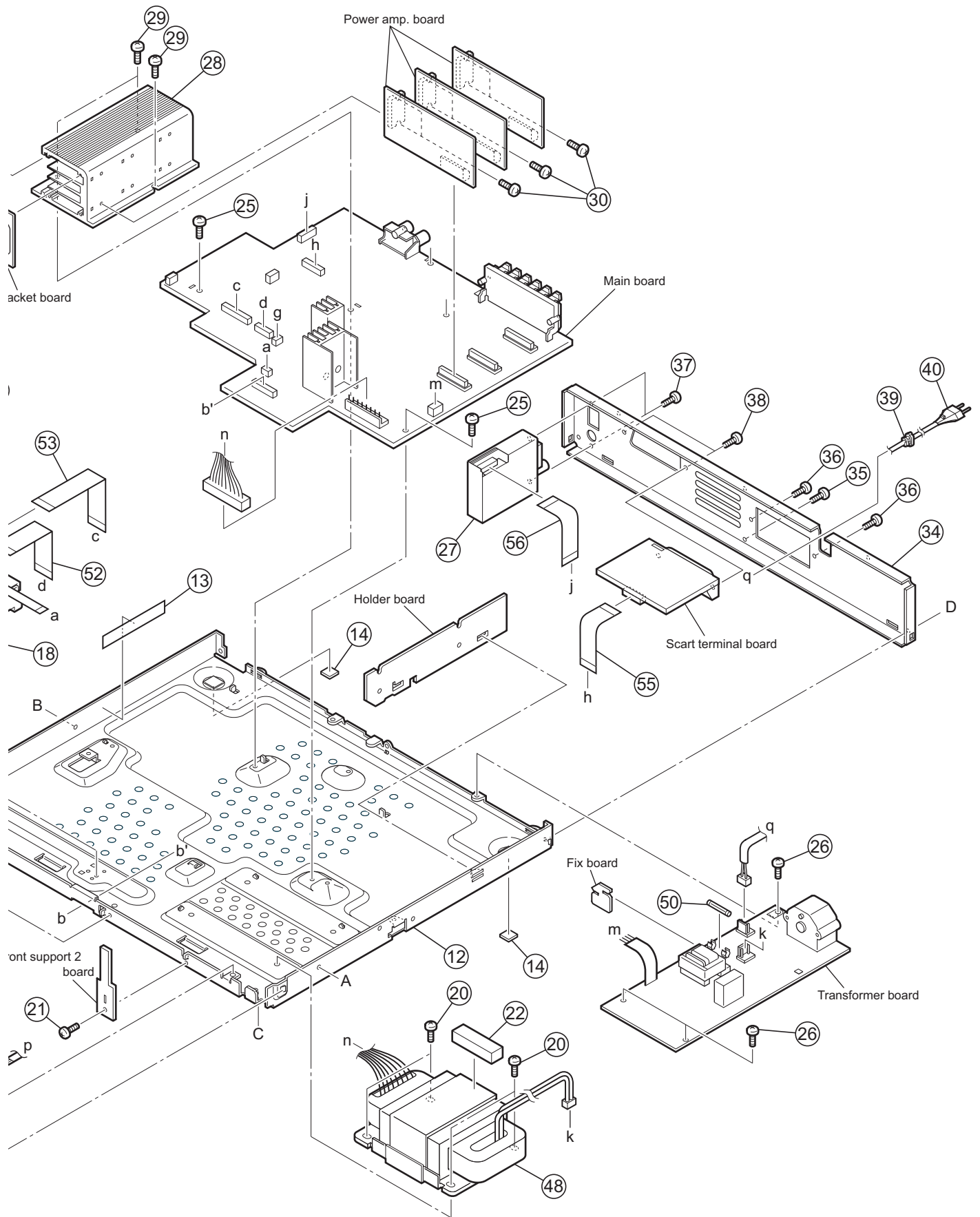


Exploded view of general assembly and parts list

Block No. **M 1 M M**

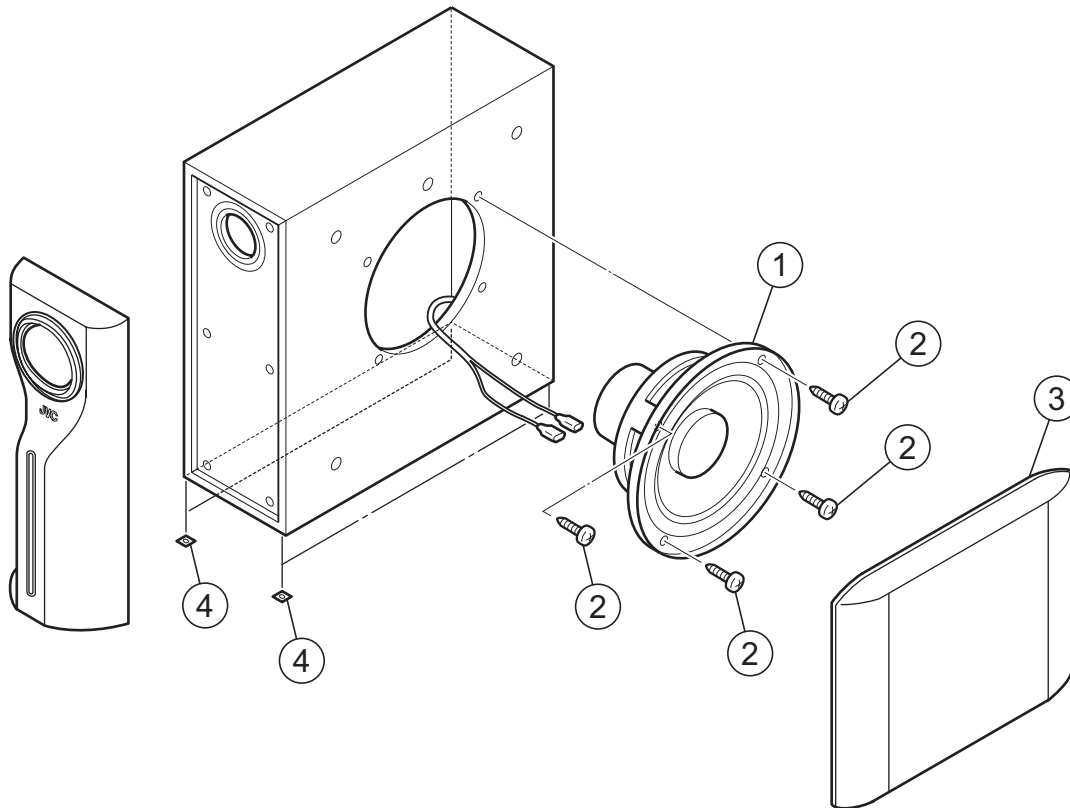




Speaker assembly and parts list

(Subwoofer) (TH-S33)

Block No. M 2 M M



The parts without symbol number are not service.

Speaker(Subwoofer) (TH-S33)

Block No. M 2 M M

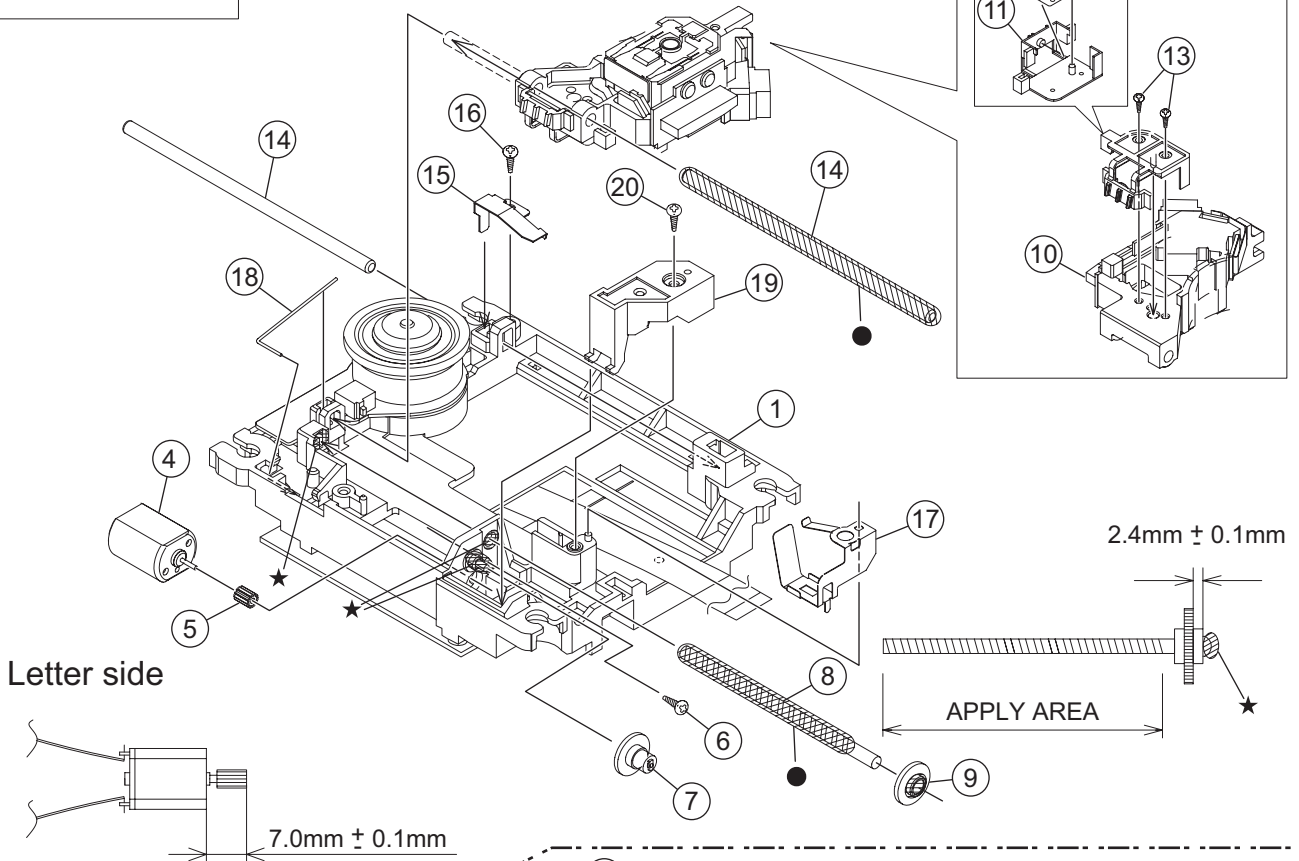
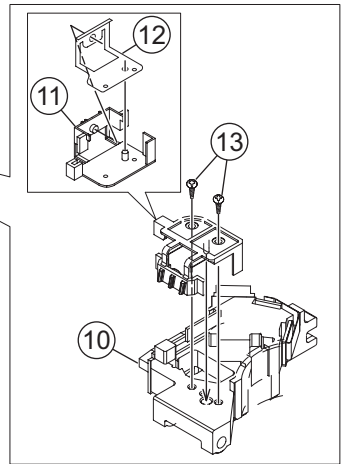
△ Symbol No.	Part No.	Part Name	Description	Local
1	LE10016-066A	CONE SPK		
2	7001541605	TAPPING SCREW	(x4)	
3	LV10964-001A	NET ASSY		
4	5600006901	RUBBER FOOT	(x4)	

DVD mechanism assembly and parts list

Block No. M J M M

Grease
 ★ =JVG-31N
 ● =JVS-1003

FTU-MM1-21M



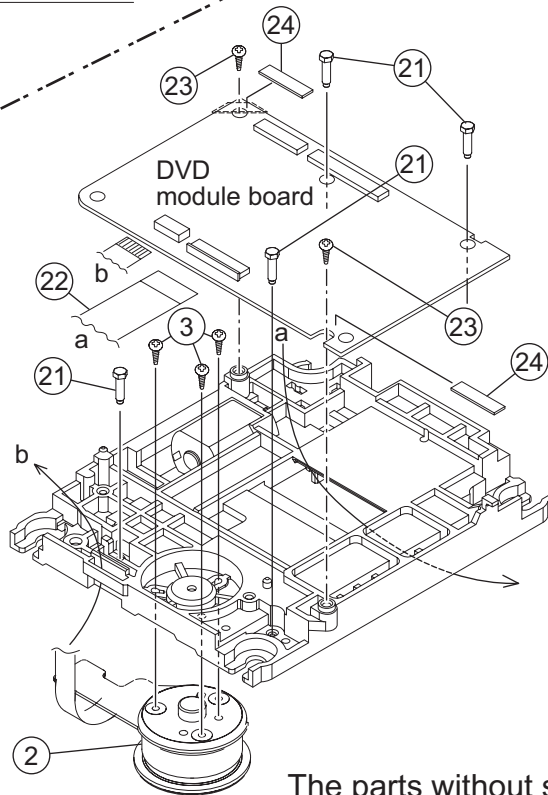
Letter side

2.4mm ± 0.1mm

APPLY AREA

7.0mm ± 0.1mm

Reverse side



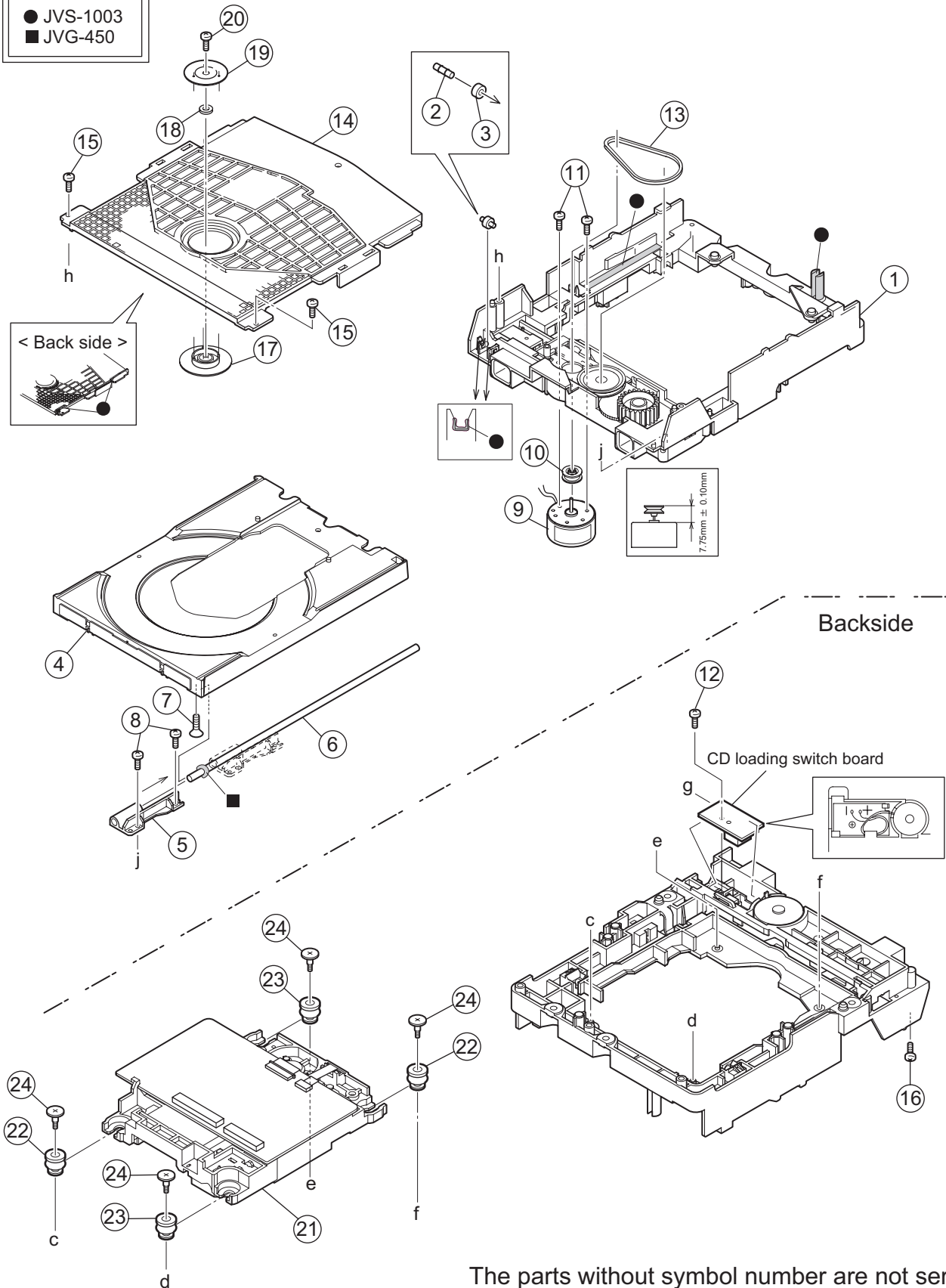
The parts without symbol number are not service.

DVD loading base assembly and parts list

FMU-MM1-21M

Block No. M N M M

Grease
 ● JVS-1003
 ■ JVG-450



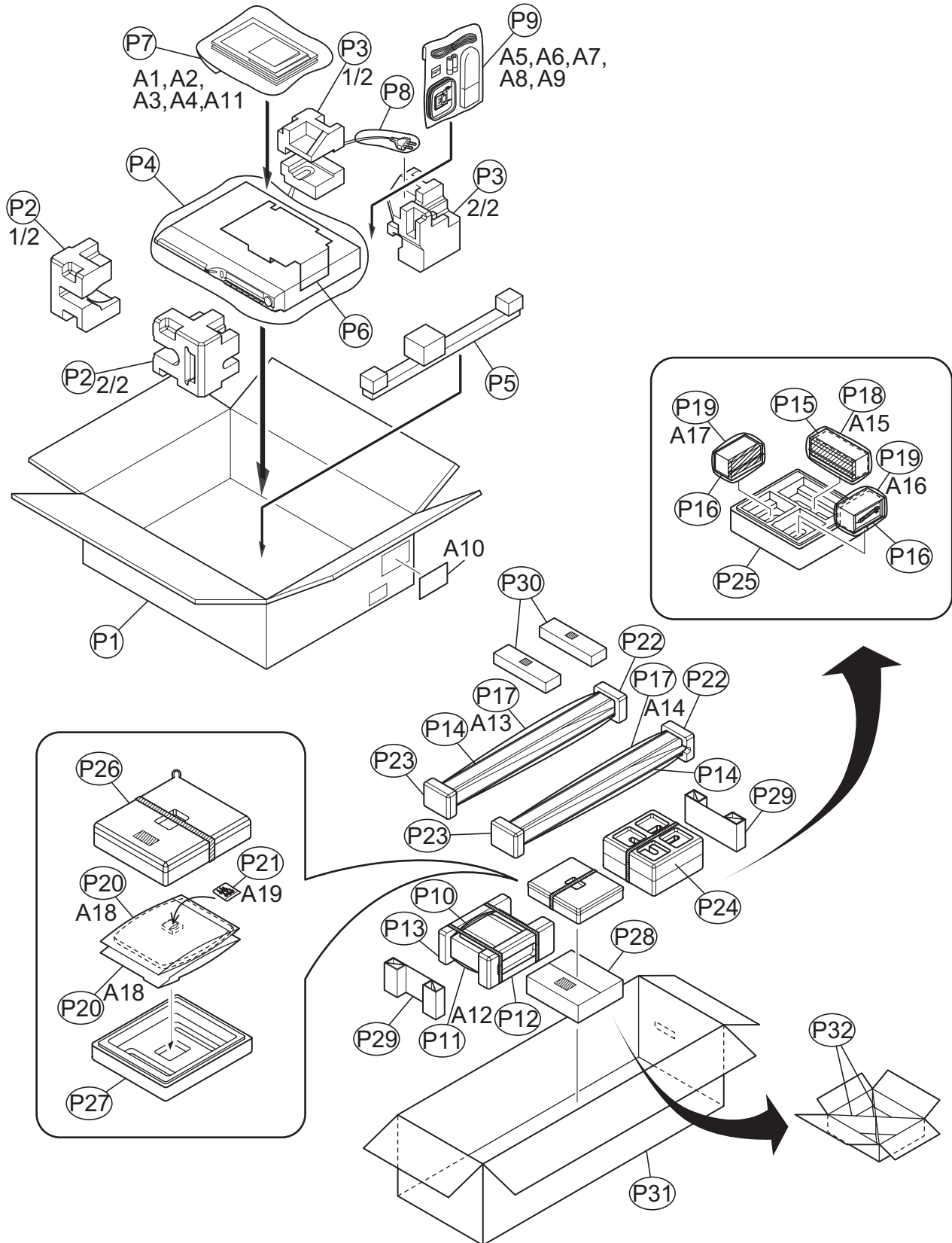
The parts without symbol number are not service.

Packing materials and accessories parts list

Block No. M 3 M M

(TH-S33 B,E,EN,EV)

No additional / supplemental order of WARRANTY CARDS are available

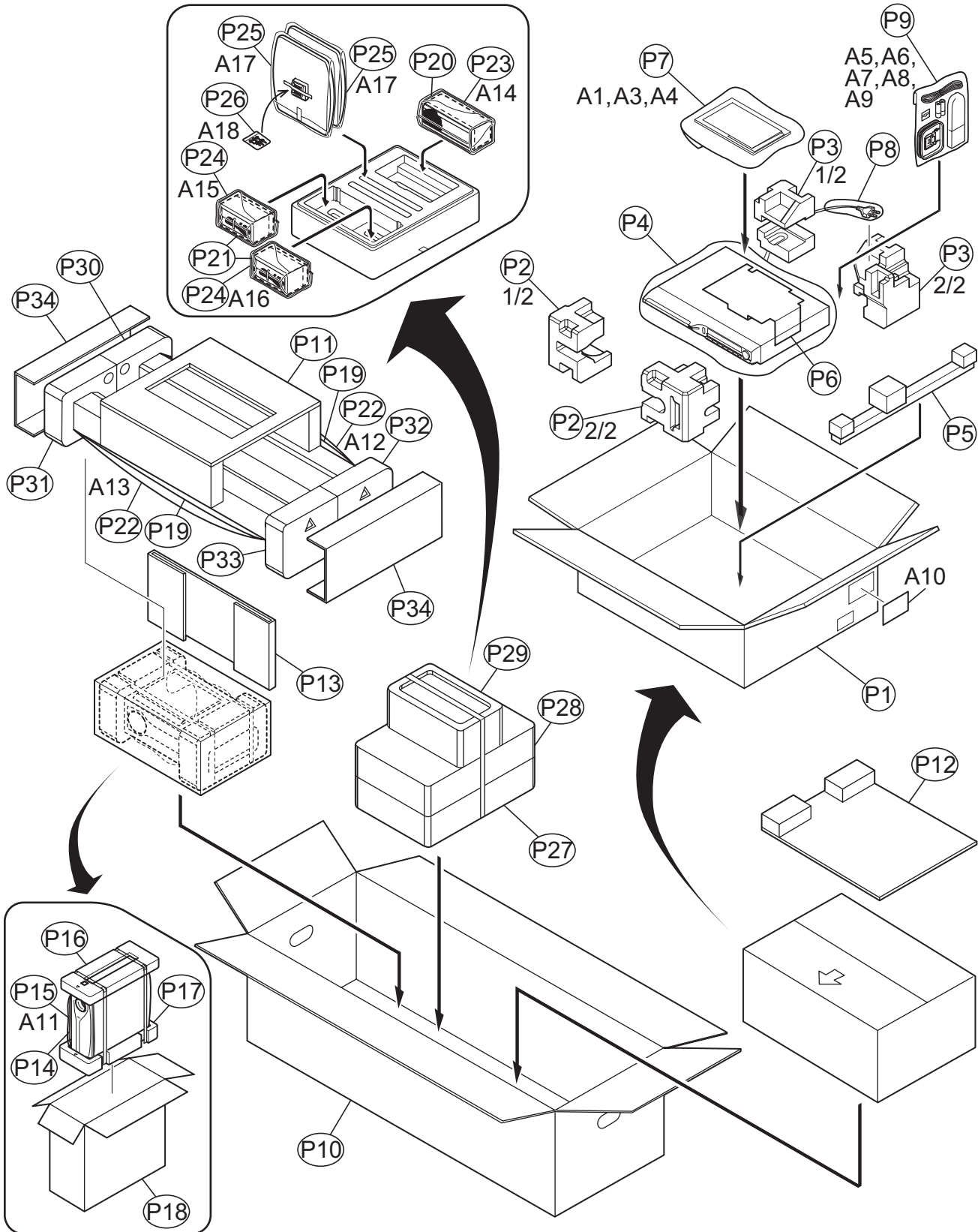


Packing materials and accessories parts list

Block No. **M 4 M M**

(TH-S33 EE)

No additional / supplemental order of WARRANTY CARDS are available

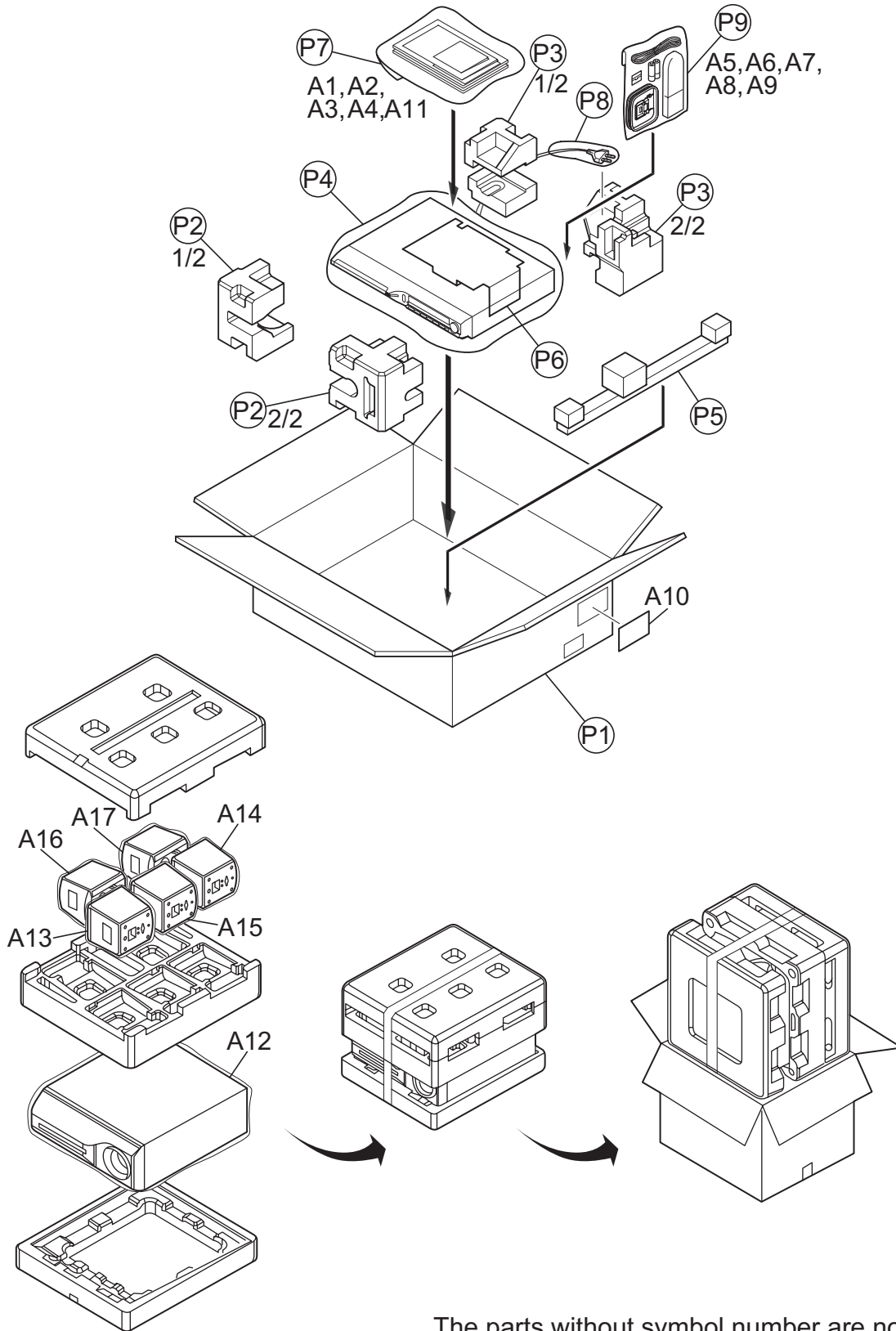


Packing materials and accessories parts list

(TH-S11 B,E,EN,EV)

Block No. M 5 M M

No additional / supplemental order of WARRANTY CARDS are available



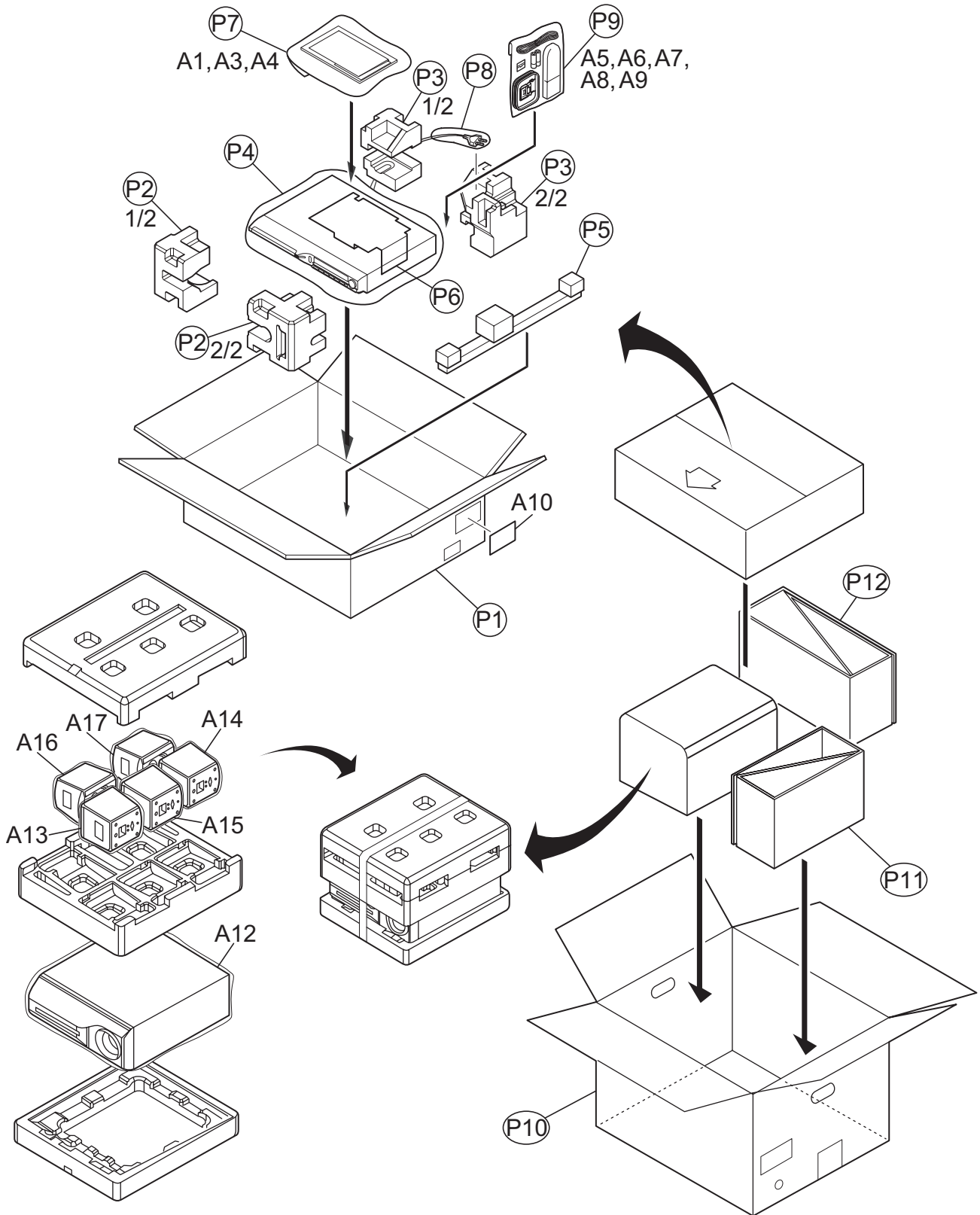
The parts without symbol number are not service.

Packing materials and accessories parts list

Block No. **M 6 M M**

(TH-S11 EE)

No additional / supplemental order of WARRANTY CARDS are available



The parts without symbol number are not service.