

COMPACT DISC PLAYER
DP-SG7/SG7G
 SERVICE MANUAL

KENWOOD

© 1999-7/B51-5542-00 (K/K) 2299

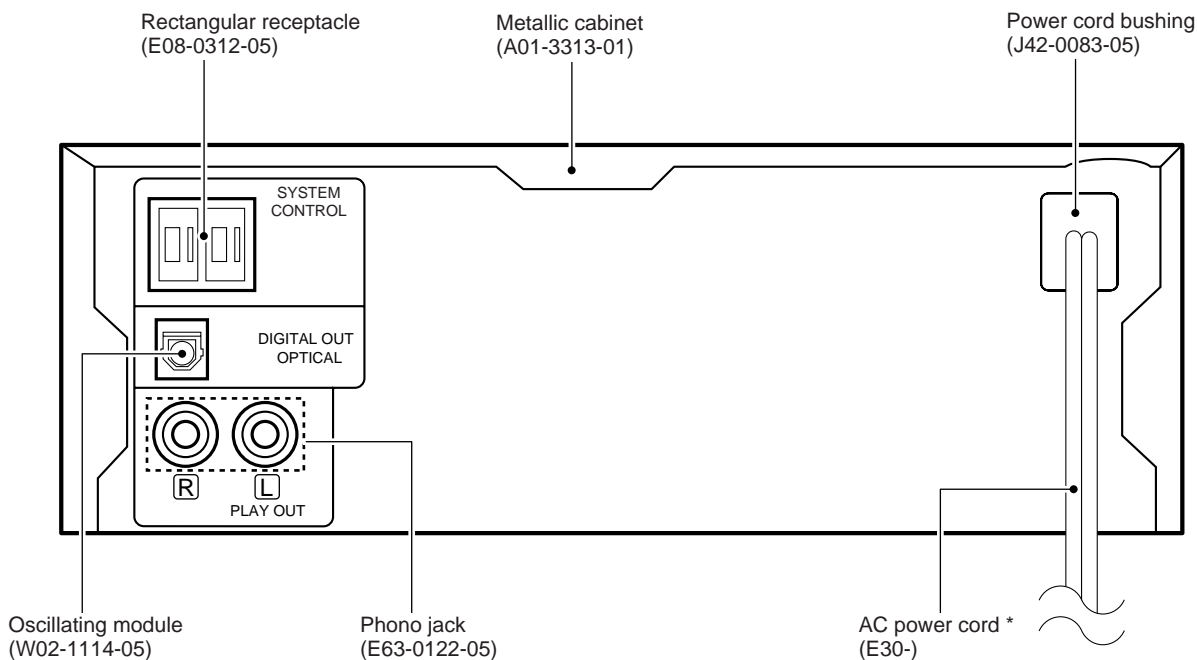
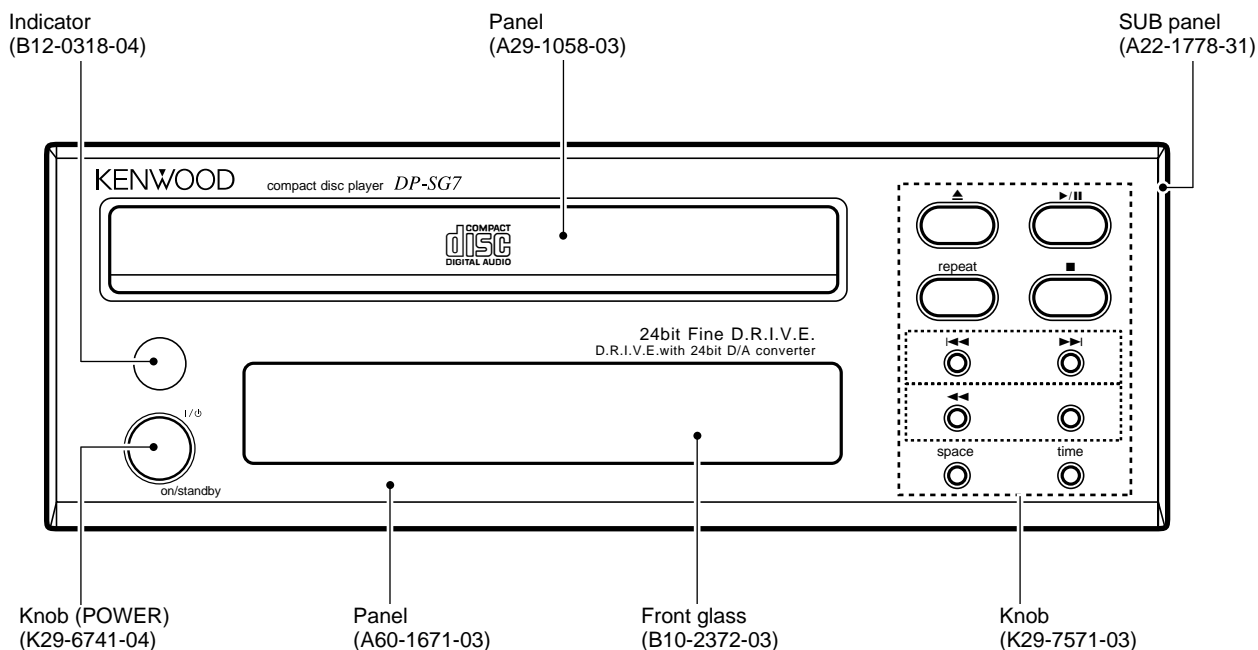


Illustration is DP-SG7.

* Refer to parts list on page 15.

In compliance with Federal Regulations, following are reproductions of labels on, or inside the product relating to laser product safety.

Refer to DP-SE7 service manual (B51-5371-00), if require the circuit description.

KENWOOD-Crop. certifies this equipment conforms to DHHS Regulations No. 21 DFR 1040. 10, Chapter 1, Subchapter J.

DANGER : Laser radiation when open and interlock defeated.
AVOID DIRECT EXPOSURE TO BEAM



DP-SG7/SG7G

CONTENTS / CAUTIONS

Contents

CONTENTS / CAUTIONS.....	2	SCHEMATIC DIAGRAM	7
DISASSEMBLY FOR REPAIR.....	3	EXPLODED VIEW	13
ADJUSTMENT	4	PARTS LIST.....	15
PC BOARD	5	SPECIFICATIONS	Back cover

Cautions

Operation to reset

The microcomputer may fall into malfunction (impossibility to operate, erroneous display, etc.) when the power cord is unplugged while power is ON or due to an external factor. In this case, execute the following procedure to reset the microcomputer and return it to normal condition.

- Please note that resetting the microcomputer clears the contents stored in it returns it to condition when it left the factory.

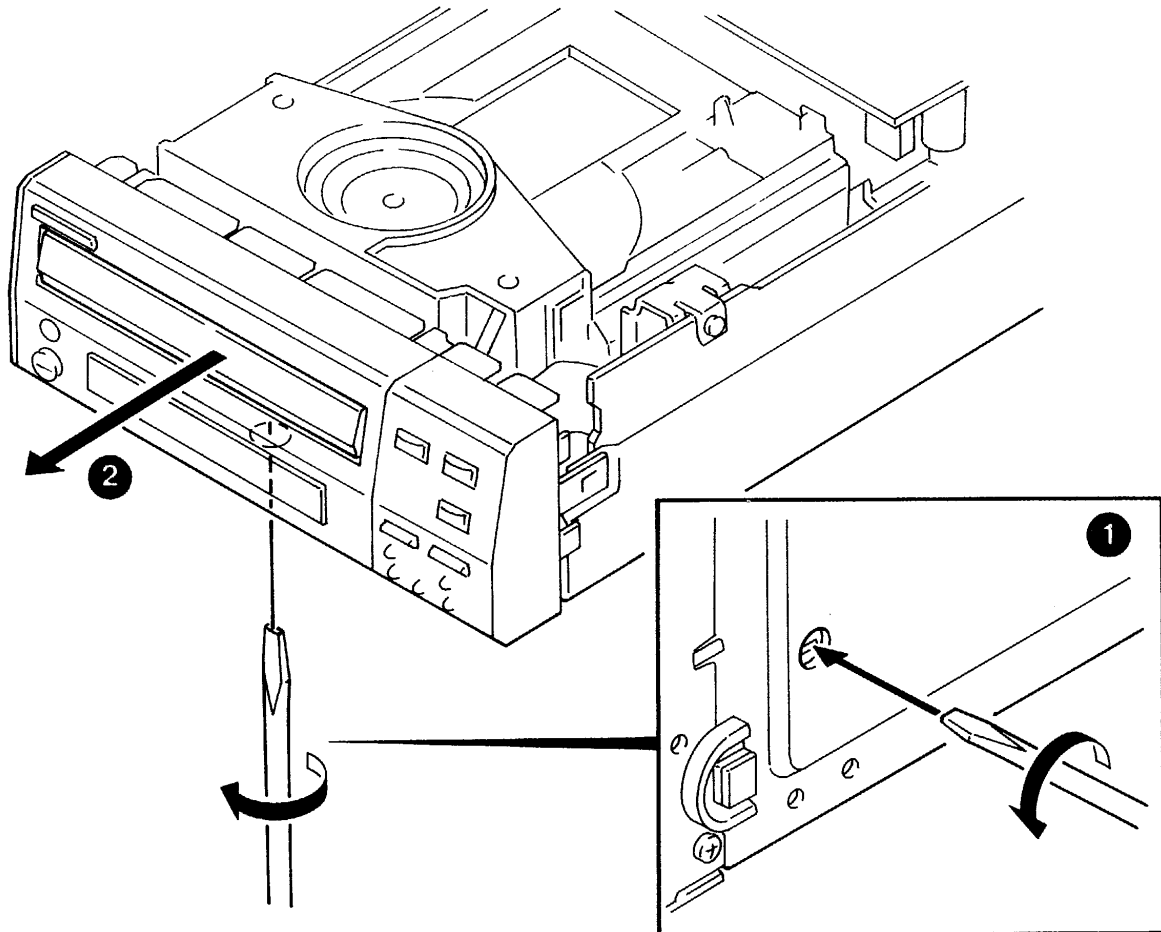
DP-SG7

Pull the power plug from the receptacle, and then plug it in again.

DISASSEMBLY FOR REPAIR

How to open tray if not comes out.

1. Insert screwdriver to hole on bottom plate and turn screw clockwise about 100° (❶).
2. Pull tray out by hand if tray comes out (❷).



DP-SG7/SG7G

ADJUSTMENT

No.	ITEM	INPUT SETTINGS	OUTPUT SETTINGS	PLAYER SETTINGS	ALIGNMENT POINTS	ALIGN FOR	FIG.
While pressing the "REPEAT" key, turn the AC ON. { Refer to test mode (MODE 0 0) }							
1	LASER POWER	—	Apply the sensor section of optical power meter on the pickup lens.	Press the PLAY/PAUSE key, then confirm that the LED is "03".	—	On the power from 0.08 to 0.15 mW, when the diffraction grating is correctly aligned with the RF level of 0.6 Vp-p or more.	(a)
2	FOCUS ERROR BIAS	Test disc Type 4	Connect an oscilloscope as follows. CH1 : RF (CN3 pin 1) CH2 : TE (CN3 pin 6)	Press the PLAY/PAUSE key, then confirm that the LED is "05".	FE BIAS VR2	Optimum eye pattern	
3	TRACKING ERROR BALANCE	Test disc Type 4	Connect an oscilloscope as follows. CH1 : RF (CN3 pin 1) CH2 : TE (CN3 pin 6)	Press the PLAY/PAUSE key, then confirm that the LED is "03".	TE BALANCE VR1	Symmetry between upper and lower patterns	
4	TRACKING GAIN	Test disc Type 4 Apply signal of 1.2 kHz, 50mVrms to CN3 pin 5-6.	Connect a LPF to CN3 pin 5-6 to which you connect an oscilloscope or AC voltmeters.	Press the PLAY/PAUSE key, then confirm that the LED is "05".	TRACKING GAIN VR3	Two VTVMs should read the same value.	(e)

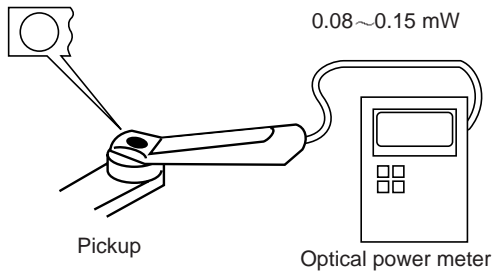
Note:

Type 4 disc : SONY YEDS-18 Test Disc or equivalent.(KTD-0*)

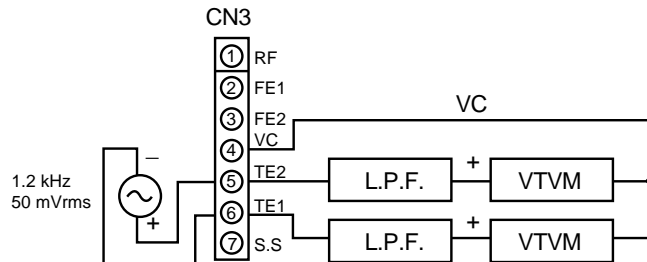
LPF: Around 47 kΩ+ 390 pF or so.

Step 1~4 are in Test Mode.

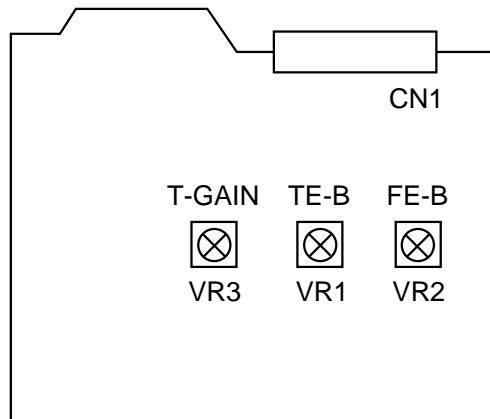
(a) Laser power



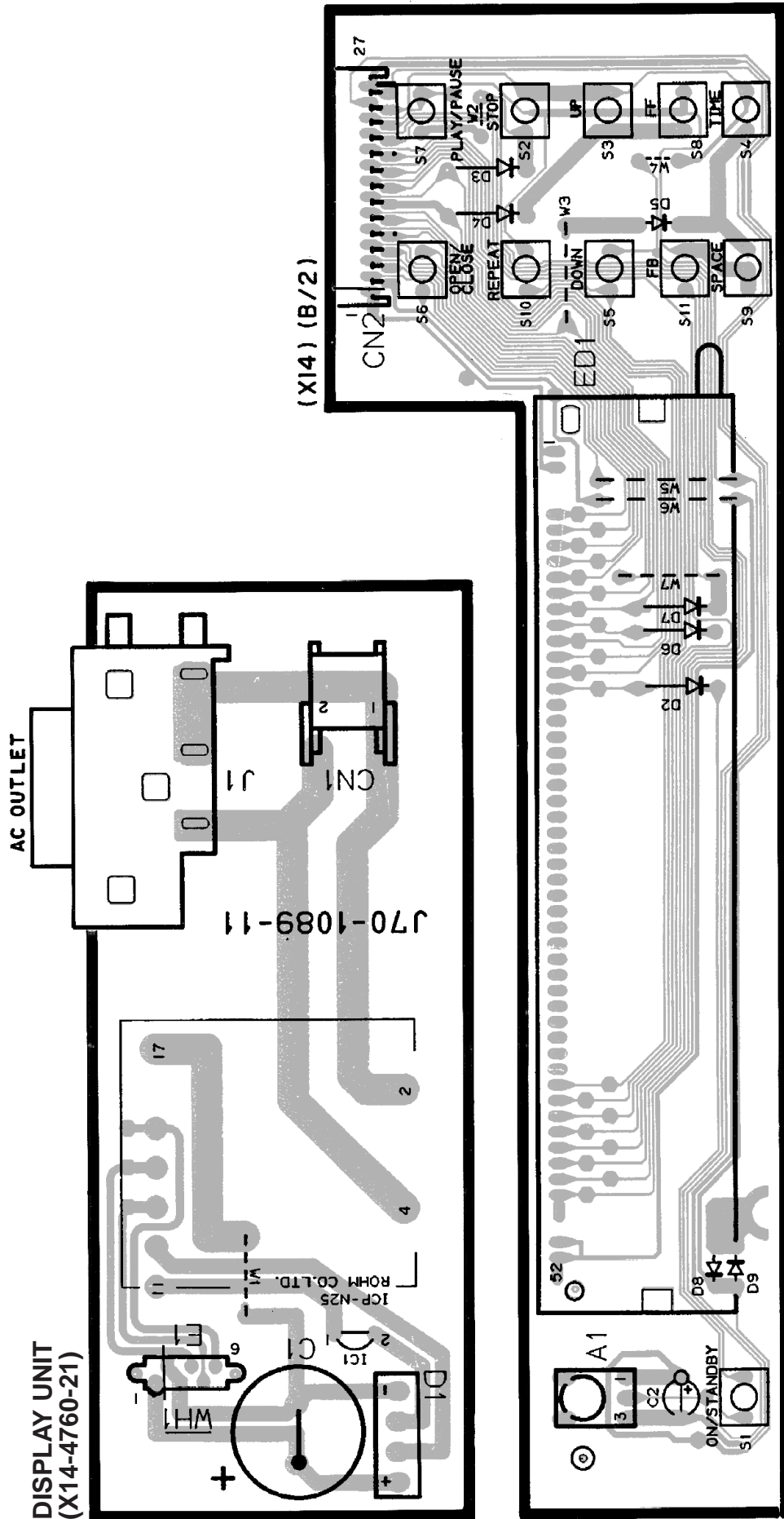
(e) Tracking gain



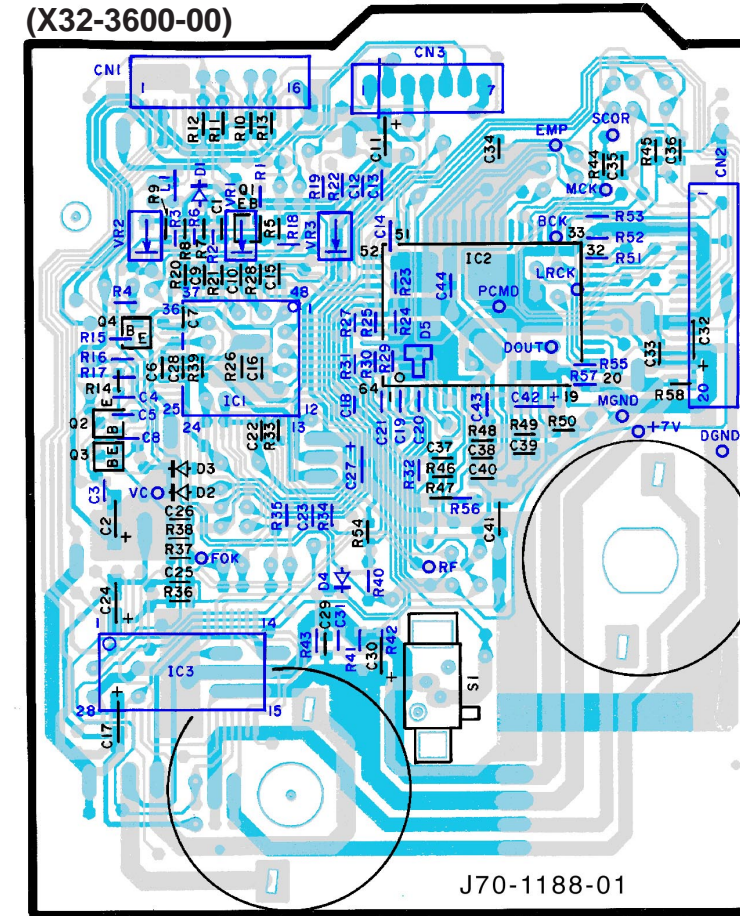
ALIGNMENT POINTS



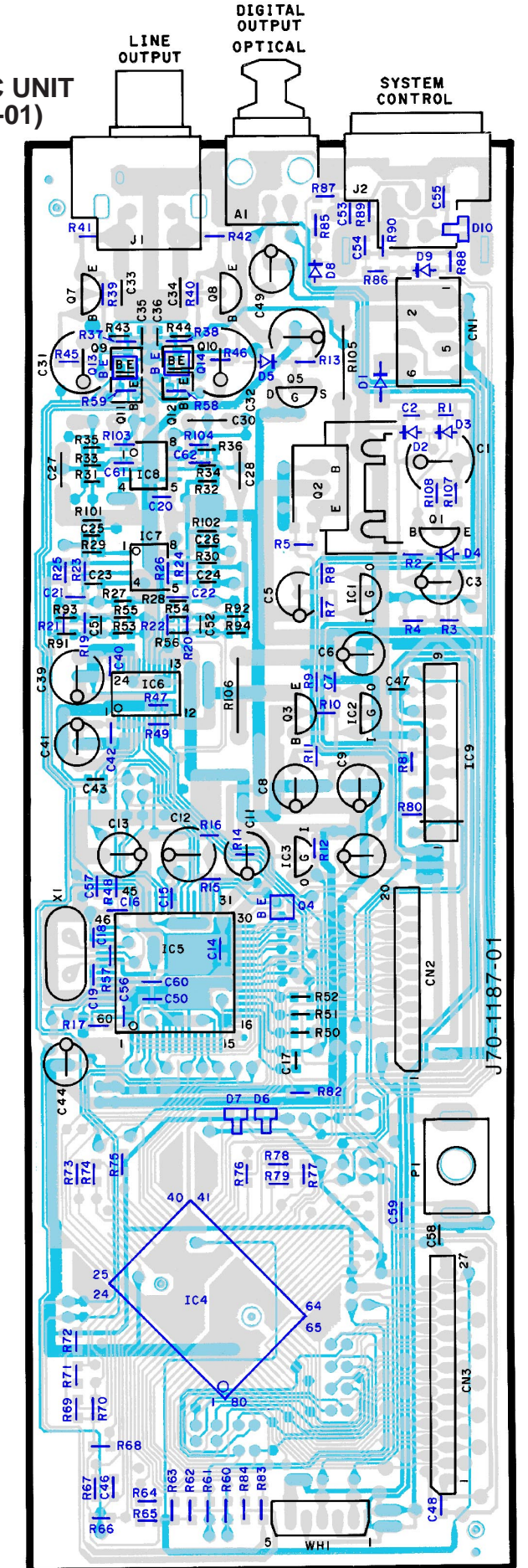
PC BOARD(Component side view)



CD PLAYER UNIT (X32-3600-00)

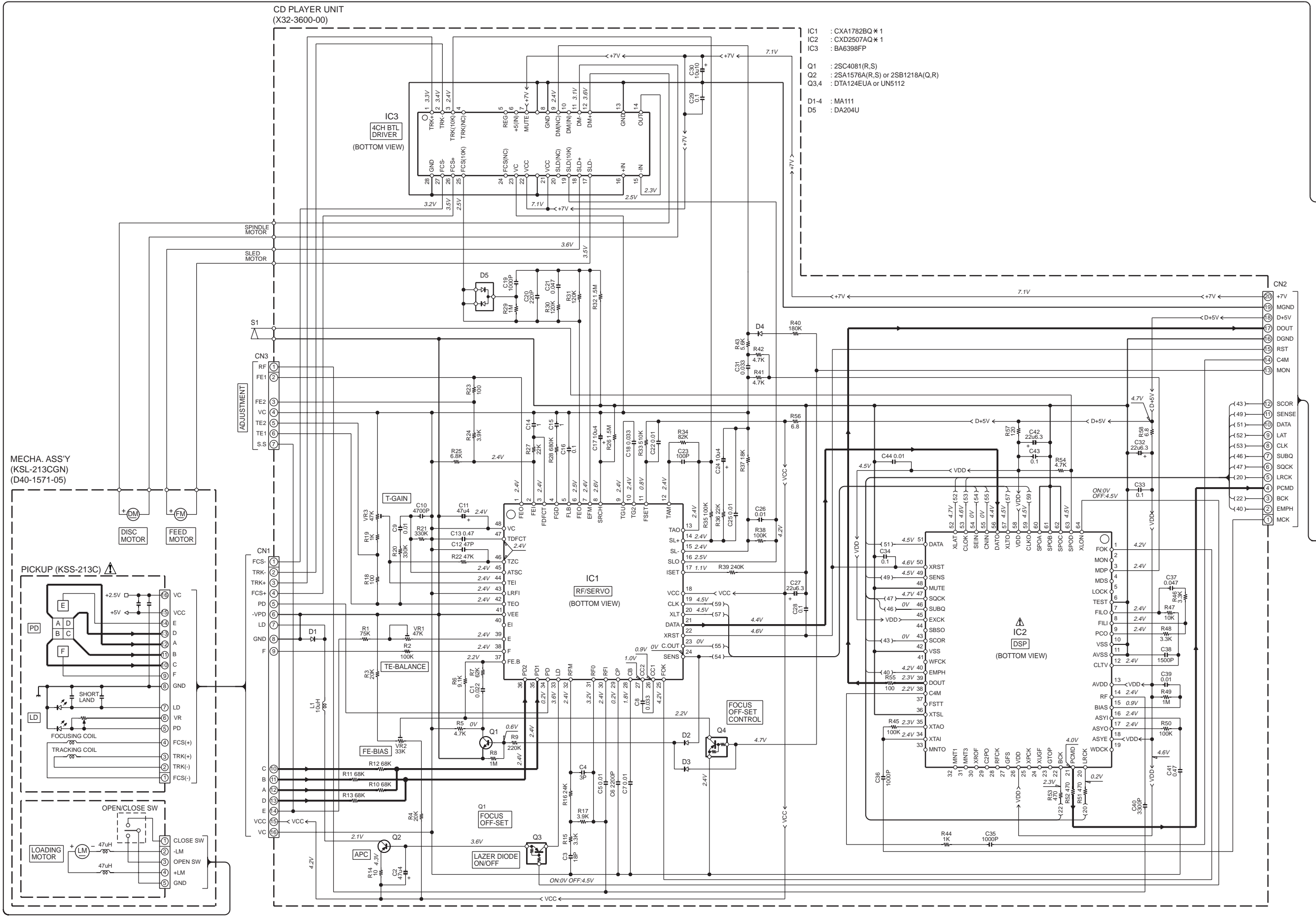


ELECTRIC UNIT (X25-6100-01)



Refer to the schematic diagram for the value of resistors and capacitors.

CD PLAYER UNIT
(X32-3600-00)



- IC1 : CXA1782BQ * 1
- IC2 : CXD2507AQ * 1
- IC3 : BA6398FP

- Q1 : 2SC4081(R,S)
- Q2 : 2SA1576A(R,S) or 2SB1218A(Q,R)
- Q3,4 : DTA124EUA or UN5112

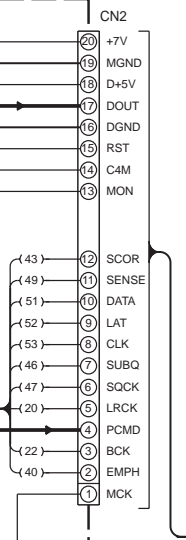
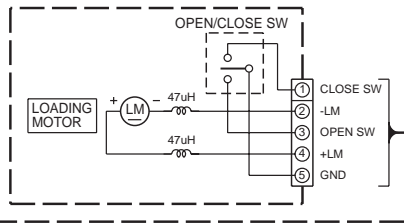
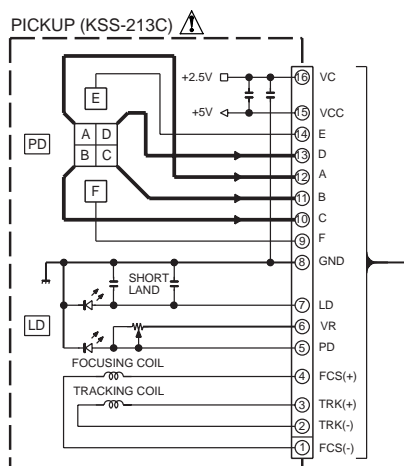
- D1-4 : MA111
- D5 : DA204U

IC3
4CH BTL DRIVER
(BOTTOM VIEW)

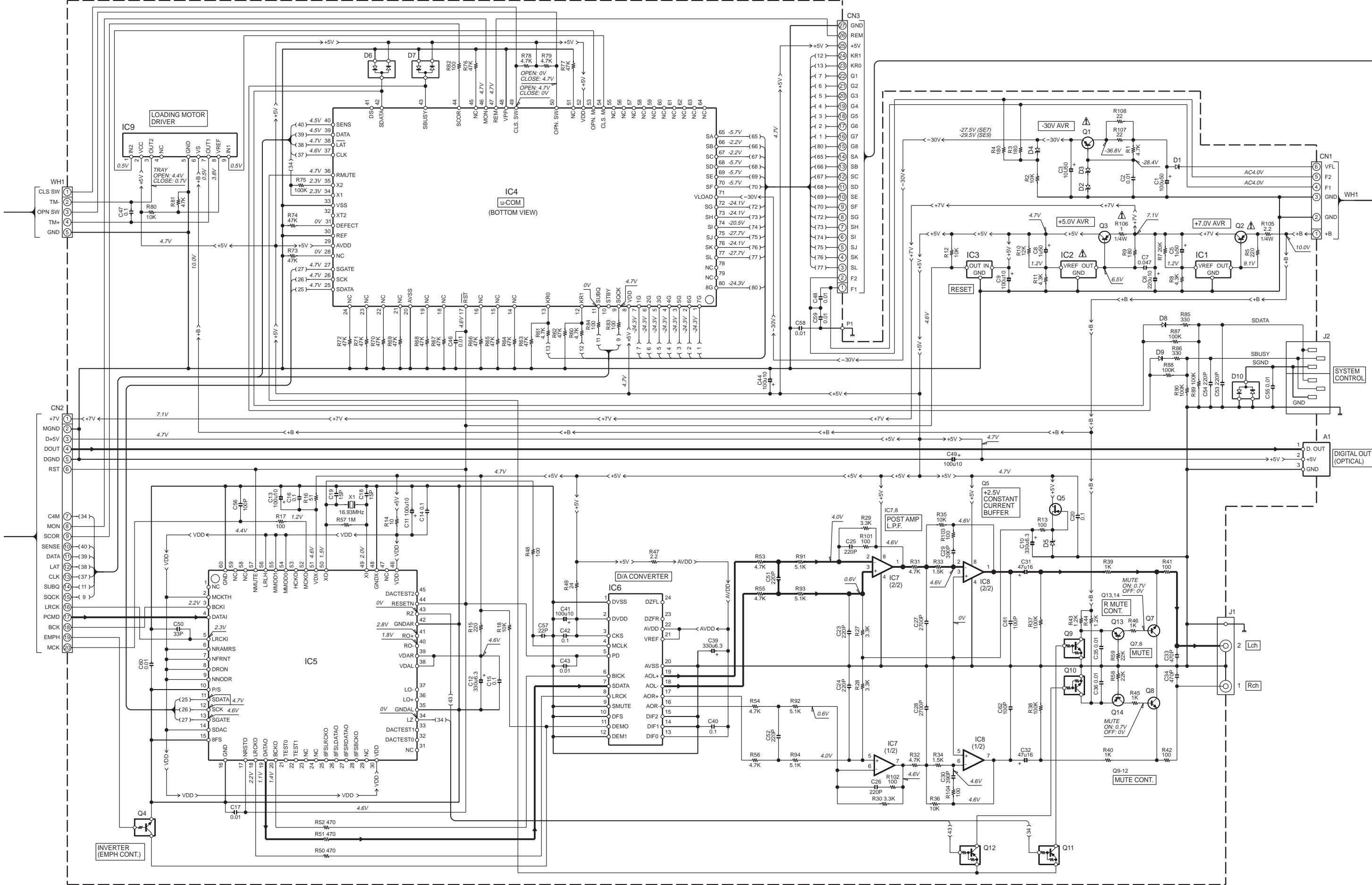
IC1
RF/SERVO
(BOTTOM VIEW)

IC2
DSP
(BOTTOM VIEW)

MECHA. ASS'Y
(KSL-213CGN)
(D40-1571-05)

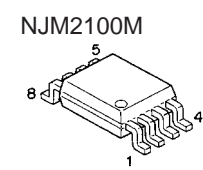
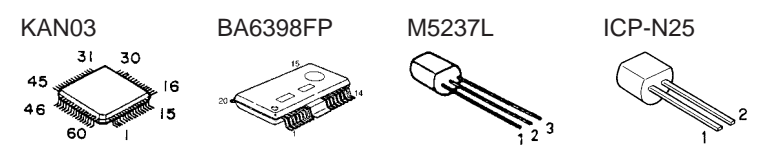
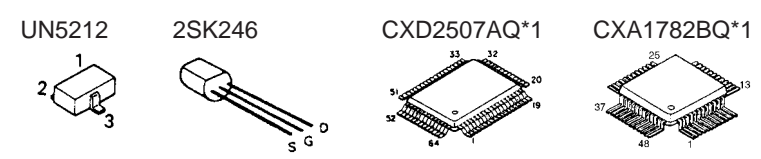
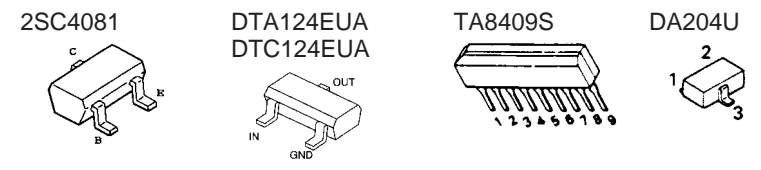
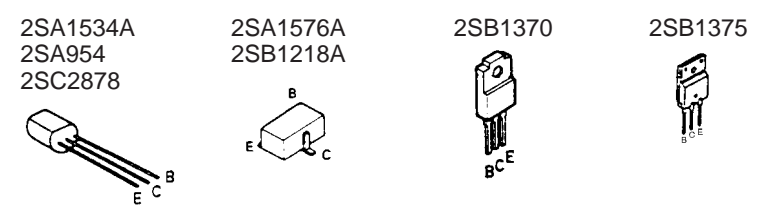
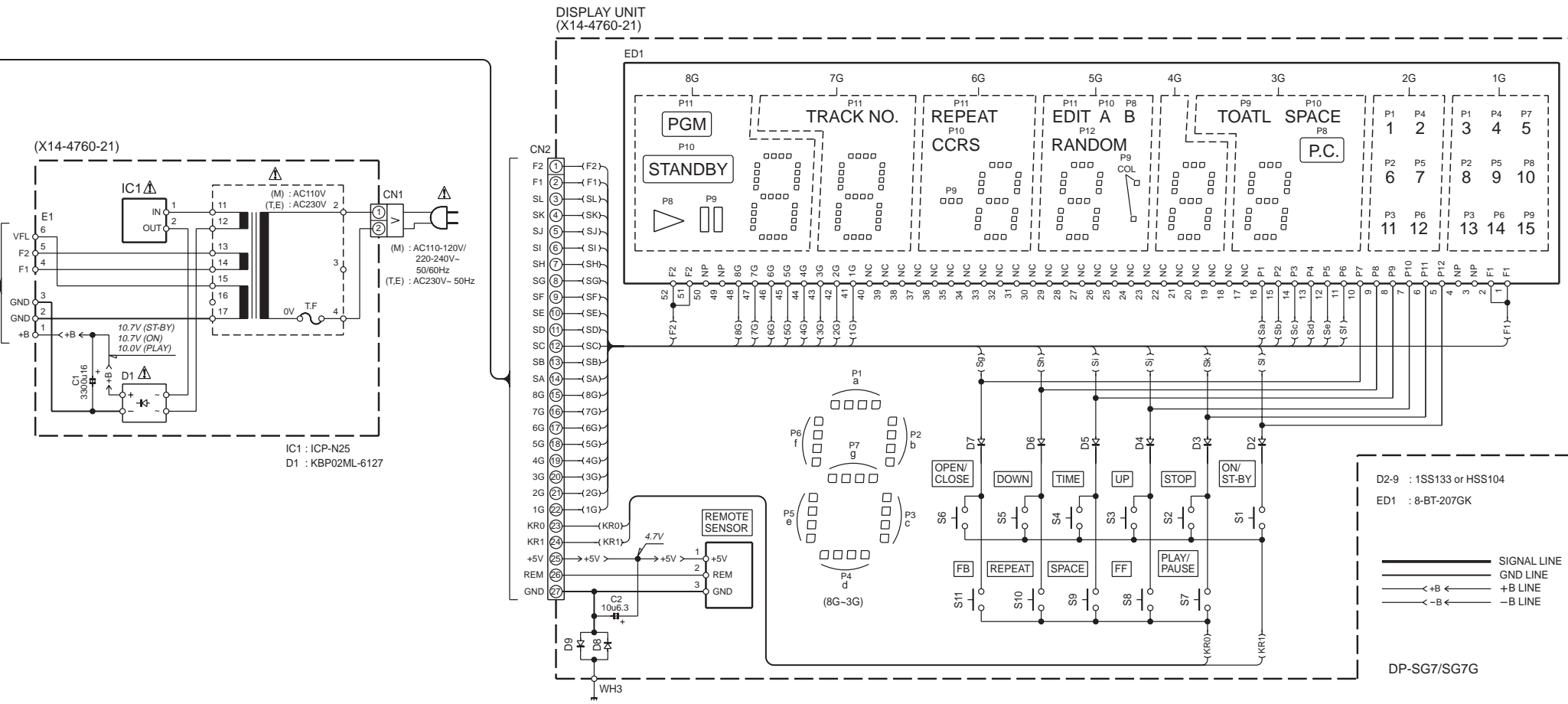


ELECTRIC UNIT (X25-6100-01)



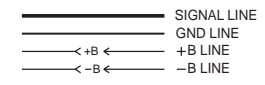
CAUTION: For continued safety, replace safety critical components only with manufacturer's recommended parts (refer to parts list). Δ indicates safety critical components. For continued protection against risk of fire, replace only with same type and rating fuse(s). To reduce the risk of electric shock, leakage-current or resistance measurements shall be carried out (exposed parts are acceptably insulated from the supply circuit) before the appliance is returned to the customer.

The DC voltage is an actual reading measured with a high impedance type voltmeter. The measurement value may vary depending on the measuring instruments used or on the product. Refer to the voltage during PLAY unless otherwise specified; The value shown in () is the voltage measured at the moment of STOP.



- IC1,2 : M5237L
- IC3 : PST933D-T
- IC4 : uPD78044FGF071
- IC5 : KAN03
- IC6 : AK4324-VF
- IC7,8 : NJM2100M
- IC9 : TA8409S
- Q1 : 2SA954(L,K)
- Q2 : 2SB1370 or 2SB1375
- Q3 : 2SA1534A
- Q4,9,10 : DTC124EUA or UN5212
- Q5 : 2SK246(Y,GR)
- Q7,8 : 2SC2878(B)
- Q11,12 : DTA124EUA or UN5112
- Q13,14 : 2SA1576A(R,S) or 2SB1218A(Q,R)
- D1 : 1SR154-400
- D2,3 : UDZ15B
- D4 : UDZ5.1B
- D5 : UDZ2.7B
- D6,7,10 : DA204U
- D8,9 : MA111

D2-9 : 1SS133 or HSS104
 ED1 : 8-BT-207GK
 DP-SG7/SG7G



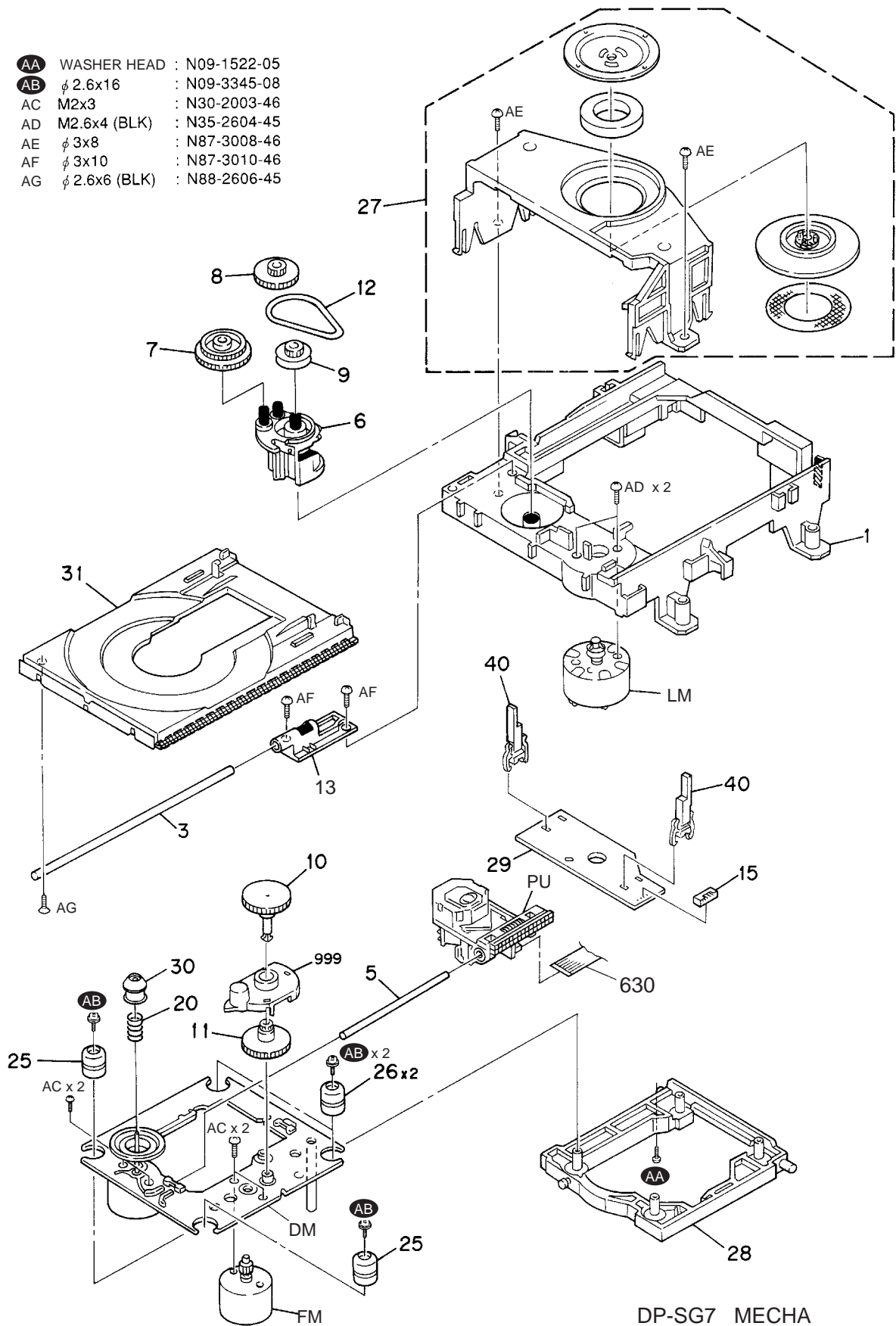
DP-SG7/SG7G

KENWOOD

DP-SG7/SG7G

EXPLODED VIEW (MECHANISM)

- AA WASHER HEAD : N09-1522-05
- AB ϕ 2.6x16 : N09-3345-08
- AC M2x3 : N30-2003-46
- AD M2.6x4 (BLK) : N35-2604-45
- AE ϕ 3x8 : N87-3008-46
- AF ϕ 3x10 : N87-3010-46
- AG ϕ 2.6x6 (BLK) : N88-2606-45

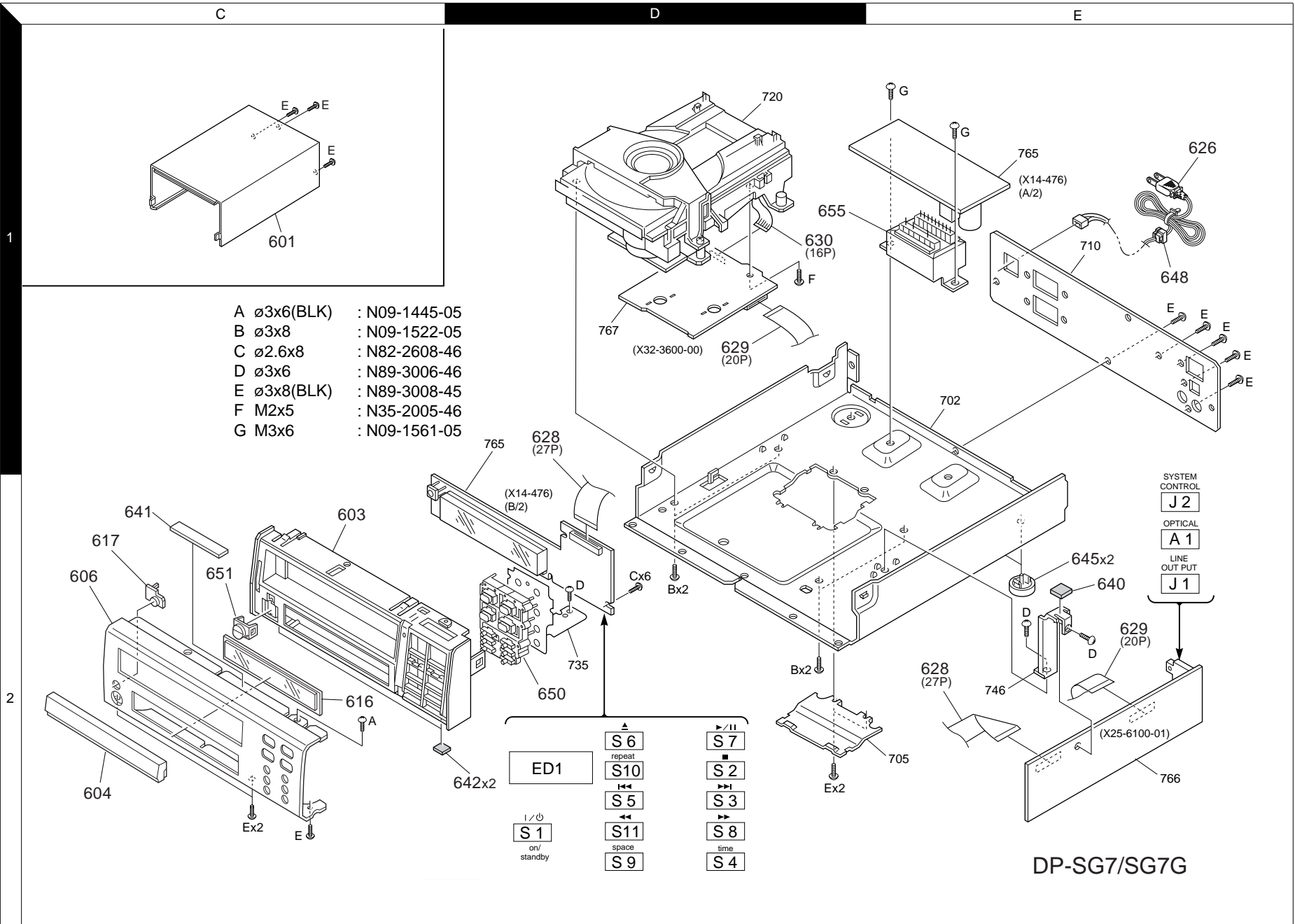


DP-SG7 MECHA

DP-SG7/SG7G

EXPLODED VIEW (UNIT)

Parts with exploded numbers larger than 700 are not supplied.



DP-SG7/SG7G

* New Parts
 Parts without **Parts No.** are not supplied.
 Les articles non mentionnés dans le **Parts No.** ne sont pas fournis.
 Teile ohne **Parts No.** werden nicht geliefert.

①

Ref. No	Add-ress	New Parts	Parts No.	Description	Desti-nation	Re-marks
DP-SG7/SG7G						
601	1C	*	A01-3313-01	METALLIC CABINET		
603	2C		A22-1778-31	SUB PANEL	T1E1	
603	2C	*	A22-1828-01	SUB PANEL	M1	
604	2C	*	A29-1058-03	PANEL	T1E1	
604	2C		A29-1060-03	PANEL	M1	
606	2C	*	A60-1671-03	PANEL	T1E1	
606	2C	*	A60-1680-03	PANEL	M1	
616	2C		B10-2372-03	FRONT GLASS		
617	2C		B12-0318-04	INDICATOR		
Δ 626	1E		E30-2592-15	AC POWER CORD	M1E1	
Δ 626	1E		E30-2721-05	AC POWER CORD	T1	
628	1D,2E		E35-1475-05	FLAT CABLE 27P		
629	1D,1E		E35-1476-05	FLAT CABLE 20P		
630	1D		E35-1573-05	FLAT CABLE 16P		
640	2E		G11-2283-04	CUSHION		
641	2C		G11-2284-04	CUSHION		
642	2D		G11-2381-04	CUSHION		
-			H10-7454-02	POLYSTYRENE FOAMED FIXTURE		
-			H10-7455-02	POLYSTYRENE FOAMED FIXTURE		
-			H12-2299-14	PACKING FIXTURE	T1	
-			H25-1579-04	PROTECTION BAG	E1	
-			H25-1581-04	PROTECTION BAG	T1	
-			H25-1620-04	PROTECTION BAG	M1	
-		*	H50-3419-04	ITEM CARTON CASE	E1	
-		*	H50-3422-14	ITEM CARTON CASE	M1	
-		*	H50-3454-04	ITEM CARTON CASE	T1	
Δ 645	2E		J02-0370-05	FOOT		
Δ 648	1E		J42-0083-05	POWER CORD BUSHING		
-			J61-0307-05	WIRE BAND		
650	2D	*	K29-7571-03	KNOB		
651	2C		K29-6741-04	KNOB (POWER)		
Δ 655	1D	*	L07-2749-05	POWER TRANSFORMER	M1	
Δ 655	1D		L07-2750-05	POWER TRANSFORMER	T1E1	
S1			S74-0065-05	LEAF SWITCH (LIMIT)		
DISPLAY UNIT (X14-4760-21)						
C1			CE04KW1C332M	ELECTRO 3300UF 16WV		
C2			C90-3209-05	ELECTRO 10UF 6.3WV		
CN1			E40-4632-05	PIN ASSY		
CN2			E40-9965-05	FLAT CABLE CONNECTOR		
-			J19-5820-03	HOLDER		
S1 -11			S70-0031-05	TACT SWITCH		
Δ D1			KBP02ML-6127	DIODE		
D2 -9			HSS104	DIODE		
D2 -9			1SS133	DIODE		
ED1			8-BT-207GK	INDICATOR TUBE		
Δ IC1			ICP-N25	ANALOGUE IC		
A1			W02-2561-05	ELECTRIC CIRCUIT MODULE		

L : Scandinavia K : USA P : Canada R : Mexico C : China I : Malaysia
 Y : PX(Far East, Hawaii) T : Europe E : Europe G : Germany V : China (Shanghai)
 Y : AAFES(Europe) X : Australia Q : Russia H : Korea M : Other Areas Δ indicates safety critical components.

* New Parts
 Parts without **Parts No.** are not supplied.
 Les articles non mentionnés dans le **Parts No.** ne sont pas fournis.
 Teile ohne **Parts No.** werden nicht geliefert.

②

Ref. No	Add-ress	New Parts	Parts No.	Description	Desti-nation	Re-marks
ELECTRIC UNIT (X25-6100-01)						
C1			CE04KW1H101M	ELECTRO 100UF 50WV		
C2			CK73FB1H103K	CHIP C 0.010UF K		
C3			CE04KW1H100M	ELECTRO 10UF 50WV		
C5			CE04KW1H010M	ELECTRO 1.0UF 50WV		
C6			CE04KW1A221M	ELECTRO 220UF 10WV		
C7			CK73FB1H473K	CHIP C 0.047UF K		
C8			CE04KW1H010M	ELECTRO 1.0UF 50WV		
C9			CE04KW1A101M	ELECTRO 100UF 10WV		
C10			CE04KW0J331M	ELECTRO 330UF 6.3WV		
C11			CE04KW1A101M	ELECTRO 100UF 10WV		
C12			CE04KW0J331M	ELECTRO 330UF 6.3WV		
C13			CE04KW1A101M	ELECTRO 100UF 10WV		
C14 -16			CK73FB1E104K	CHIP C 0.10UF K		
C17			CK73FB1H103K	CHIP C 0.010UF K		
C18 ,19			CC73FSL1H150J	CHIP C 15PF J		
C20			CK73FB1E104K	CHIP C 0.10UF K		
C23 -26			CC73FSL1H221J	CHIP C 220PF J		
C27 ,28			CQ93FMG1H272J	MYLAR 2700PF J		
C29 ,30			CQ93FMG1H391K	MYLAR 390PF K		
C31 ,32			C90-3749-05	ELECTRO 47UF 16WV		
C33 ,34			CQ93FMG1H471J	MYLAR 470PF J		
C35 ,36			CK73FB1H103K	CHIP C 0.010UF K		
C39			CE04KW0J331M	ELECTRO 330UF 6.3WV		
C40			CK73FB1E104K	CHIP C 0.10UF K		
C41			CE04KW1A101M	ELECTRO 100UF 10WV		
C42			CK73FB1E104K	CHIP C 0.10UF K		
C43			CK73FB1H103K	CHIP C 0.010UF K		
C44			CE04KW1A101M	ELECTRO 100UF 10WV		
C46			CK73FB1H103K	CHIP C 0.010UF K		
C47			CK73FB1E104K	CHIP C 0.10UF K		
C48			CK73FB1H103K	CHIP C 0.010UF K		
C49			CE04KW1A101M	ELECTRO 100UF 10WV		
C50			CC73FCH1H330J	CHIP C 33PF J		
C51 -54			CC73FSL1H221J	CHIP C 220PF J		
C55			CK73FB1H103K	CHIP C 0.010UF K		
C56			CC73FSL1H101J	CHIP C 100PF J		
C57			CC73FSL1H220J	CHIP C 22PF J		
C58 -60			CK73FB1H103K	CHIP C 0.010UF K		
C61 ,62			CC73FSL1H101J	CHIP C 100PF J		
CN1			E40-4296-05	FLAT CABLE CONNECTOR		
CN2			E40-9875-05	FLAT CABLE CONNECTOR		
CN3			E40-9966-05	FLAT CABLE CONNECTOR		
J1			E63-0122-05	PHONO JACK		
J2			E08-0312-05	RECTANGULAR RECEPTACLE		
P1			J21-5845-04	MOUNTING HARDWARE		
X1		*	L77-2254-05	CRYSTAL RESONATOR(16.9344MHZ)		
R1			RK73FB2A472J	CHIP R 4.7K J 1/10W		
R2			RK73FB2A103J	CHIP R 10K J 1/10W		
R3 ,4			RK73FB2A181J	CHIP R 180 J 1/10W		
R5			RK73FB2A221J	CHIP R 220 J 1/10W		
R7			RK73FB2A203J	CHIP R 20K J 1/10W		

L : Scandinavia K : USA P : Canada R : Mexico C : China I : Malaysia
 Y : PX(Far East, Hawaii) T : Europe E : Europe G : Germany V : China (Shanghai)
 Y : AAFES(Europe) X : Australia Q : Russia H : Korea M : Other Areas Δ indicates safety critical components.

* New Parts

Parts without **Parts No.** are not supplied.Les articles non mentionnés dans le **Parts No.** ne sont pas fournis.Teile ohne **Parts No.** werden nicht geliefert.

③

Ref. No	Add-ress	New Parts	Parts No.	Description	Desti-nation	Re-marks
R8			RK73FB2A432J	CHIP R 4.3K J 1/10W		
R9			RK73FB2A181J	CHIP R 180 J 1/10W		
R10			R92-1867-05	METAL 12K F 1/10W		
R11			R92-1868-05	METAL 4.3K F 1/10W		
R12			RK73FB2A103J	CHIP R 10K J 1/10W		
R13			RK73FB2A101J	CHIP R 100 J 1/10W		
R14			RK73FB2A100J	CHIP R 10 J 1/10W		
R15			RK73FB2A221J	CHIP R 220 J 1/10W		
R16			RK73FB2A510J	CHIP R 51 J 1/10W		
R17			RK73FB2A101J	CHIP R 100 J 1/10W		
R18			RK73FB2A103J	CHIP R 10K J 1/10W		
R27 ,30			RK73FB2A332J	CHIP R 3.3K J 1/10W		
R31 ,32			RK73FB2A472J	CHIP R 4.7K J 1/10W		
R33 ,34			RK73FB2A152J	CHIP R 1.5K J 1/10W		
R35 ,36			RK73FB2A103J	CHIP R 10K J 1/10W		
R37 ,38			RK73FB2A104J	CHIP R 100K J 1/10W		
R39 ,40			RK73FB2A102J	CHIP R 1.0K J 1/10W		
R41 ,42			RK73FB2A101J	CHIP R 100 J 1/10W		
R43 ,44			RK73FB2A122J	CHIP R 1.2K J 1/10W		
R45 ,46			RK73FB2A102J	CHIP R 1.0K J 1/10W		
R47			RK73FB2A2R2J	CHIP R 2.2 J 1/10W		
R48			RK73FB2A101J	CHIP R 100 J 1/10W		
R49			RK73FB2A240J	CHIP R 24 J 1/10W		
R50 -52			RK73FB2A471J	CHIP R 470 J 1/10W		
R53 -56			RK73FB2A472J	CHIP R 4.7K J 1/10W		
R57			RK73FB2A105J	CHIP R 1.0M J 1/10W		
R58 ,59			RK73FB2A223J	CHIP R 22K J 1/10W		
R60 ,61			RK73FB2A472J	CHIP R 4.7K J 1/10W		
R62 -74			RK73FB2A473J	CHIP R 47K J 1/10W		
R75			RK73FB2A104J	CHIP R 100K J 1/10W		
R76 ,77			RK73FB2A473J	CHIP R 47K J 1/10W		
R78 ,79			RK73FB2A472J	CHIP R 4.7K J 1/10W		
R80			RK73FB2A103J	CHIP R 10K J 1/10W		
R81			RK73FB2A473J	CHIP R 47K J 1/10W		
R82 -84			RK73FB2A101J	CHIP R 100 J 1/10W		
R85 ,86			RK73FB2A331J	CHIP R 330 J 1/10W		
R87 -90			RK73FB2A104J	CHIP R 100K J 1/10W		
R91 -94			RK73FB2A472J	CHIP R 4.7K J 1/10W		
R101-104			RK73FB2A101J	CHIP R 100 J 1/10W		
R105			RD14GB2E2R2J	FL-PROOF RD 2.2 J 1/4W		
Δ R106			RD14GB2E1R0J	FL-PROOF RD 1 J 1/4W		
R107,108			RK73FB2A220J	CHIP R 22 J 1/10W		
D1			1SR154-400	DIODE		
D2 ,3			UDZ15B	ZENER DIODE		
D4			UDZ5.1B	ZENER DIODE		
D5			UDZ2.7B	ZENER DIODE		
D6 ,7			DA204U	DIODE		
D8 ,9			MA111	DIODE		
D10			DA204U	DIODE		
Δ IC1 ,2			M5237L	ANALOGUE IC		
IC3			PST993D-T	ANALOGUE IC		
IC4			UPD78044FGF071	MI-COM IC		
IC5			KAN03	CUSTOM IC		
IC6			AK4324-VF	MOS-IC		

L : Scandinavia

K : USA

P : Canada

R : Mexico

C : China

I : Malaysia

Y : PX(Far East, Hawaii)

T : Europe

E : Europe

G : Germany

V : China (Shanghai)

Y : AAFES(Europe)

X : Australia

Q : Russia

H : Korea

M : Other Areas

Δ indicates safety critical components.

* New Parts

Parts without **Parts No.** are not supplied.Les articles non mentionnés dans le **Parts No.** ne sont pas fournis.Teile ohne **Parts No.** werden nicht geliefert.

④

Ref. No	Add-ress	New Parts	Parts No.	Description	Desti-nation	Re-marks
IC7 ,8			NJM2100M	IC(OP AMPLIFIER)		
IC9			TA8409S	MOS-IC		
Δ Q1			2SA954(L,K)	TRANSISTOR		
Δ Q2			2SB1370	TRANSISTOR		
Δ Q2			2SB1375	TRANSISTOR		
Q3			2SA1534A	TRANSISTOR		
Q4			DTC124EUA	DIGITAL TRANSISTOR		
Q4			UN5212	DIGITAL TRANSISTOR		
Q5			2SK246(Y,GR)	FET		
Q7 ,8			2SC2878(B)	TRANSISTOR		
Q9 ,10			DTC124EUA	DIGITAL TRANSISTOR		
Q9 ,10			UN5212	DIGITAL TRANSISTOR		
Q11 ,12			DTA124EUA	DIGITAL TRANSISTOR		
Q11 ,12			UN5112	DIGITAL TRANSISTOR		
Q13 ,14			2SA1576A(R,S)	TRANSISTOR		
Q13 ,14			2SB1218A(Q,R)	TRANSISTOR		
A1			W02-1114-15	OSCILLATING MODULE		
CD PLAYER UNIT (X32-3600-00)						
C1			CK73FB1H223K	CHIP C 0.022UF	K	
C2			C92-0083-05	CHIP C 47UF	4WV	
C3			CC73FSL1H180J	CHIP C 18PF	J	
C4			CC73FCH1H030C	CHIP C 3.0PF	C	
C5			CK73FB1H103K	CHIP C 0.010UF	K	
C6			CK73FB1H222K	CHIP C 2200PF	K	
C7			CK73FB1H103K	CHIP C 0.010UF	K	
C8			CK73FB1H333K	CHIP C 0.033UF	K	
C9			CK73FB1H103K	CHIP C 0.010UF	K	
C10			CK73FB1H472K	CHIP C 4700PF	K	
C11			C92-0083-05	CHIP C 47UF	4WV	
C12			CC73FSL1H470J	CHIP C 47PF	J	
C13			CK73EB1C474K	CHIP C 0.47UF	K	
C14			CK73EB1C105K	CHIP C 1.0UF	K	
C15 ,16			CK73FB1E104K	CHIP C 0.10UF	K	
C17			C92-0080-05	CHIP C 10UF	4WV	
C18			CK73FB1H333K	CHIP C 0.033UF	K	
C19			CK73FB1H102K	CHIP C 1000PF	K	
C20			CC73FSL1H221J	CHIP C 220PF	J	
C21			CK73FB1H473K	CHIP C 0.047UF	K	
C22			CK73FB1H103K	CHIP C 0.010UF	K	
C23			CC73FSL1H101J	CHIP C 100PF	J	
C24			C92-0080-05	CHIP C 10UF	4WV	
C25 ,26			CK73FB1H103K	CHIP C 0.010UF	K	
C27			C92-0090-05	CHIP C 22UF	6.3WV	
C28 ,29			CK73FB1E104K	CHIP C 0.10UF	K	
C30			C92-0041-05	CHIP-ELE 10UF	10WV	
C31			CK73FB1H333K	CHIP C 0.033UF	K	
C32			C92-0090-05	CHIP C 22UF	6.3WV	
C33 ,34			CK73FB1E104K	CHIP C 0.10UF	K	
C35 ,36			CK73FB1H102K	CHIP C 1000PF	K	
C37			CK73FB1H473K	CHIP C 0.047UF	K	
C38			CK73FB1H152K	CHIP C 1500PF	K	
C39			CK73FB1H103K	CHIP C 0.010UF	K	
C40			CK73FB1H332K	CHIP C 3300PF	K	

L : Scandinavia

K : USA

P : Canada

R : Mexico

C : China

I : Malaysia

Y : PX(Far East, Hawaii)

T : Europe

E : Europe

G : Germany

V : China (Shanghai)

Y : AAFES(Europe)

X : Australia

Q : Russia

H : Korea

M : Other Areas

Δ indicates safety critical components.

* New Parts
Parts without **Parts No.** are not supplied.
Les articles non mentionnés dans le **Parts No.** ne sont pas fournis.
Teile ohne **Parts No.** werden nicht geliefert.

5

Ref. No	Add-ress	New Parts	Parts No.	Description	Desti-nation	Re-marks
C41			CK73EB1C474K	CHIP C 0.47UF	K	
C42			C92-0090-05	CHIP C 22UF	6.3WV	
C43			CK73FB1E104K	CHIP C 0.10UF	K	
C44			CK73FB1H103K	CHIP C 0.010UF	K	
CN1			E40-9963-05	FLAT CABLE CONNECTOR		
CN2			E40-9964-05	FLAT CABLE CONNECTOR		
CN3			E40-3251-05	PIN ASSY		
L1			L40-1001-31	SMALL FIXED INDUCTOR(10UH,K)		
R1			RK73FB2A753J	CHIP R 75K	J 1/10W	
R2			RK73FB2A104J	CHIP R 100K	J 1/10W	
R3 ,4			RK73FB2A203J	CHIP R 20K	J 1/10W	
R5			RK73FB2A472J	CHIP R 4.7K	J 1/10W	
R6			RK73FB2A912J	CHIP R 9.1K	J 1/10W	
R7			RK73FB2A623J	CHIP R 62K	J 1/10W	
R8			RK73FB2A105J	CHIP R 1.0M	J 1/10W	
R9			RK73FB2A224J	CHIP R 220K	J 1/10W	
R10 -13			RK73FB2A683J	CHIP R 68K	J 1/10W	
R14			RK73FB2A100J	CHIP R 10	J 1/10W	
R15			RK73FB2A332J	CHIP R 3.3K	J 1/10W	
R16			RK73FB2A243J	CHIP R 24K	J 1/10W	
R17			RK73FB2A392J	CHIP R 3.9K	J 1/10W	
R18			RK73FB2A101J	CHIP R 100	J 1/10W	
R19			RK73FB2A102J	CHIP R 1.0K	J 1/10W	
R20 ,21			RK73FB2A334J	CHIP R 330K	J 1/10W	
R22			RK73FB2A473J	CHIP R 47K	J 1/10W	
R23			RK73FB2A101J	CHIP R 100	J 1/10W	
R24			RK73FB2A392J	CHIP R 3.9K	J 1/10W	
R25			RK73FB2A682J	CHIP R 6.8K	J 1/10W	
R26			RK73FB2A155J	CHIP R 1.5M	J 1/10W	
R27			RK73FB2A223J	CHIP R 22K	J 1/10W	
R28			RK73FB2A684J	CHIP R 680K	J 1/10W	
R29			RK73FB2A105J	CHIP R 1.0M	J 1/10W	
R30 ,31			RK73FB2A124J	CHIP R 120K	J 1/10W	
R32			RK73FB2A155J	CHIP R 1.5M	J 1/10W	
R33			RK73FB2A514J	CHIP R 510K	J 1/10W	
R34			RK73FB2A823J	CHIP R 82K	J 1/10W	
R35			RK73FB2A104J	CHIP R 100K	J 1/10W	
R36			RK73FB2A223J	CHIP R 22K	J 1/10W	
R37			RK73FB2A183J	CHIP R 18K	J 1/10W	
R38			RK73FB2A104J	CHIP R 100K	J 1/10W	
R39			RK73FB2A244J	CHIP R 240K	J 1/10W	
R40			RK73FB2A184J	CHIP R 180K	J 1/10W	
R41 ,42			RK73FB2A472J	CHIP R 4.7K	J 1/10W	
R43			RK73FB2A562J	CHIP R 5.6K	J 1/10W	
R44			RK73FB2A102J	CHIP R 1.0K	J 1/10W	
R45			RK73FB2A104J	CHIP R 100K	J 1/10W	
R46			RK73FB2A332J	CHIP R 3.3K	J 1/10W	
R47			RK73FB2A103J	CHIP R 10K	J 1/10W	
R48			RK73FB2A332J	CHIP R 3.3K	J 1/10W	
R49			RK73FB2A105J	CHIP R 1.0M	J 1/10W	
R50			RK73FB2A104J	CHIP R 100K	J 1/10W	
R51 -53			RK73FB2A471J	CHIP R 470	J 1/10W	
R54			RK73FB2A472J	CHIP R 4.7K	J 1/10W	

L : Scandinavia K : USA P : Canada R : Mexico C : China I : Malaysia
Y : PX(Far East, Hawaii) T : Europe E : Europe G : Germany V : China (Shanghai)
Y : AAFES(Europe) X : Australia Q : Russia H : Korea M : Other Areas Δ indicates safety critical components.

* New Parts
Parts without **Parts No.** are not supplied.
Les articles non mentionnés dans le **Parts No.** ne sont pas fournis.
Teile ohne **Parts No.** werden nicht geliefert.

6

Ref. No	Add-ress	New Parts	Parts No.	Description	Desti-nation	Re-marks
R55			RK73FB2A101J	CHIP R 100	J 1/10W	
R56			RK73FB2A6R8J	CHIP R 6.8	J 1/10W	
R57			RK73FB2A121J	CHIP R 120	J 1/10W	
R58			RK73FB2A6R8J	CHIP R 6.8	J 1/10W	
VR1			R32-0049-05	SEMI FIXED VARIABLE RESISTOR		
VR2			R32-0048-05	SEMI FIXED VARIABLE RESISTOR		
VR3			R32-0049-05	SEMI FIXED VARIABLE RESISTOR		
D1 -4			MA111	DIODE		
D5			DA204U	DIODE		
IC1			CXA1782BQ*1	ANALOGUE IC		
IC2			CXD2507AQ*1	MOS-IC		
IC3			BA6398FP	ANALOGUE IC		
Q1			2SC4081(R,S)	TRANSISTOR		
Q2			2SA1576A(R,S)	TRANSISTOR		
Q2			2SB1218A(Q,R)	TRANSISTOR		
Q3 ,4			DTA124EUA	DIGITAL TRANSISTOR		
Q3 ,4			UN5112	DIGITAL TRANSISTOR		
MECHANISM (D40-1571-05)						
1	2B		A10-3325-08	CHASSIS		
3	2A		D10-3695-08	SHAFT(TABLE GUIDE)		
5	3A		D10-3696-08	SLED SHAFT		
6	1A		D12-0156-08	CAM		
7	1A		D13-1793-08	GEAR (P)		
8	1A		D13-1794-08	GEAR (C)		
9	1A		D13-1795-08	PULLEY (S)		
10	2A		D13-1796-08	GEAR (A)(S)		
11	3A		D13-1797-08	GEAR (B)(RP)		
12	1A		D16-0713-08	BELT		
13	2A		D23-0328-08	BEARING		
15	2B		E40-8051-08	PIN CONNECTOR (PC BORD)5P		
20	3A		G01-3969-08	SPRING (S) COMPRESSION		
25	3A		J02-1179-08	PUBBER VIBRTION		
26	3A		J02-1180-08	PUBBER VIBRTION		
27	1A		J19-5768-08	HOLDER (MG)(K) ASSY		
28	2A		J19-5769-08	HOLDER (BU) ASSY		
29	2B		J70-0995-08	PC BORD LOADING		
30	3A		J90-0846-08	RING (LO)(S) CENTER		
31	2A		J99-0592-08	TABLE DISK		
AB	3A		N09-3345-08	SCREW (2.6X16)		
AF	2A		N87-3010-46	SCREW TAPPING (3X10)		
40	2B		S74-0075-08	SWITCH LEAF		
DM	3A		T42-0907-08	MOTOR CHASSIS ASSY(MB)		
FM	3A		T42-0875-08	MOTOR GEAR ASSY(MB)		
LM	2B		T42-0873-08	MOTOR ASSY LOADING		
PU	3B		T25-0061-08	PICKUP ASSY KSS-213C(R)		

L : Scandinavia K : USA P : Canada R : Mexico C : China I : Malaysia
Y : PX(Far East, Hawaii) T : Europe E : Europe G : Germany V : China (Shanghai)
Y : AAFES(Europe) X : Australia Q : Russia H : Korea M : Other Areas Δ indicates safety critical components.

PARTS LIST

DP-SG7/SG7G

DP-SG7/SG7G

SPECIFICATIONS

CD player (DP-SG7)

Laser	Semiconductor laser
Playing rotation	200 rpm ~ 500 rpm (CLV)
Frequency response	4 Hz ~ 20 kHz, -1.0 dB
Signal to noise ratio	More than 100 dB
Dynamic range	More than 96 dB
Total harmonic distortion	Less than 0.004 % (at 1 kHz)
Channel separation	More than 92 dB (at 1 kHz)
Wow & Flutter	Unmeasurable Limit
Output level / Impedance	
Fixed	1.2 V / 1 k Ω
Digital output	
Optical	-15dBm ~ -21dBm (wave length 660 nm)

General

Power consumption	10 W
Dimensions	W: 200 mm H: 77 mm D: 249 mm
Weight (net)	2.0 kg



- 1.KENWOOD follows a policy of continuous advancements in development. For this reason specifications may be changed without notice.
- 2.Sufficient performance may not be possible at very low temperatures (under a water-freezing temperature).

Note:

Component and circuit are subject to modification to insure best operation under differing local conditions. This manual is based on Europe (E) standard, and provides information on regional circuit modification through use of alternate schematic diagrams, and information on regional component variations through use of parts list.

KENWOOD CORPORATION

14-6,Dogenzaka 1-chome, Shibuya-ku, Tokyo, 150-8501 Japan

KENWOOD SERVICE CORPORATION

P.O BOX 22745, 2201 East Dominguez St., Long Beach, CA 90801-5745, U.S.A.

KENWOOD ELECTRONICS CANADA INC.

6070 Kestrel Road, Mississauga, Ontario, Canada L5T 1S8

KENWOOD ELECTRONICS LATIN AMERICA S.A.

P.O BOX 55-2791, Piso 6 plaza Chase, Cl. 47 y Aquilino de la Guardia Panama, Republic de Panama

KENWOOD ELECTRONICS BRASIL LTDA.

Av. Moema, 170-17", Andar-Cobertura "B", Ed. Maximum Service Center, 04077-020 Moema, São Paulo-SP-Brasil

KENWOOD ELECTRONICS U.K. LIMITED

KENWOOD House, Dwight Road, Watford, Herts., WD1 8EB., United Kingdom

KENWOOD ELECTRONICS BELGUM N.V.

Meachelsesteenweg 418, B-1930 Zaventem, Belgium

KENWOOD ELECTRONICS DEUTSCHLAND GMBH

Rembrücker Str. 15, 63150 Heusenstamm, Germany

KENWOOD ELECTRONICS FRANCE S.A.

13 Boulevard Ney, 75018 Paris, France

KENWOOD ELECTRONICS ITALIA S.p.A.

Via G. Sirtori, 7/9 20129, Milano, Italy

KENWOOD IBÉRICA S.A.

Bolivia, 239-08020 Barcelona, Spain

KENWOOD ELECTRONICS AUSTRALIA PTY. LTD.

(A.C.N. 001499 074)

P.O Box 504, 8 Figtree Drive, Australia Centre, Homebush, N.S.W. 2140, Australia

KENWOOD & LEE ELECTRONICS, LTD.

Unit 3712-3724, Level 37, Tower 1, Metroplaza, 223 Hing Fong Road, Kwai Fong N.T., Hong Kong

KENWOOD ELECTRONICS GULF FZE

P.O.Box 61318, Jebel Ali, Dubai, U.A.E.

KENWOOD ELECTRONICS SINGAPORE PTE LTD.

No. 1 Genting Lane #02-02, KENWOOD Building, Singapore, 349544

KENWOOD ELECTRONICS (MALAYSIA) SDN BHD.

#4.01 Level 4, Wisma Academy Lot 4A, Jalan 19/1 46300 Petaling Jaya Selangor Darul Ehsan Malaysia

KENWOOD ELECTRONICS (THAILAND) CO., LTD.

2019 New Pechburi Road, Bangkapi, Huaykwang, Bangkok, 10320 Thailand