

instructions

Kenwood KM260 series



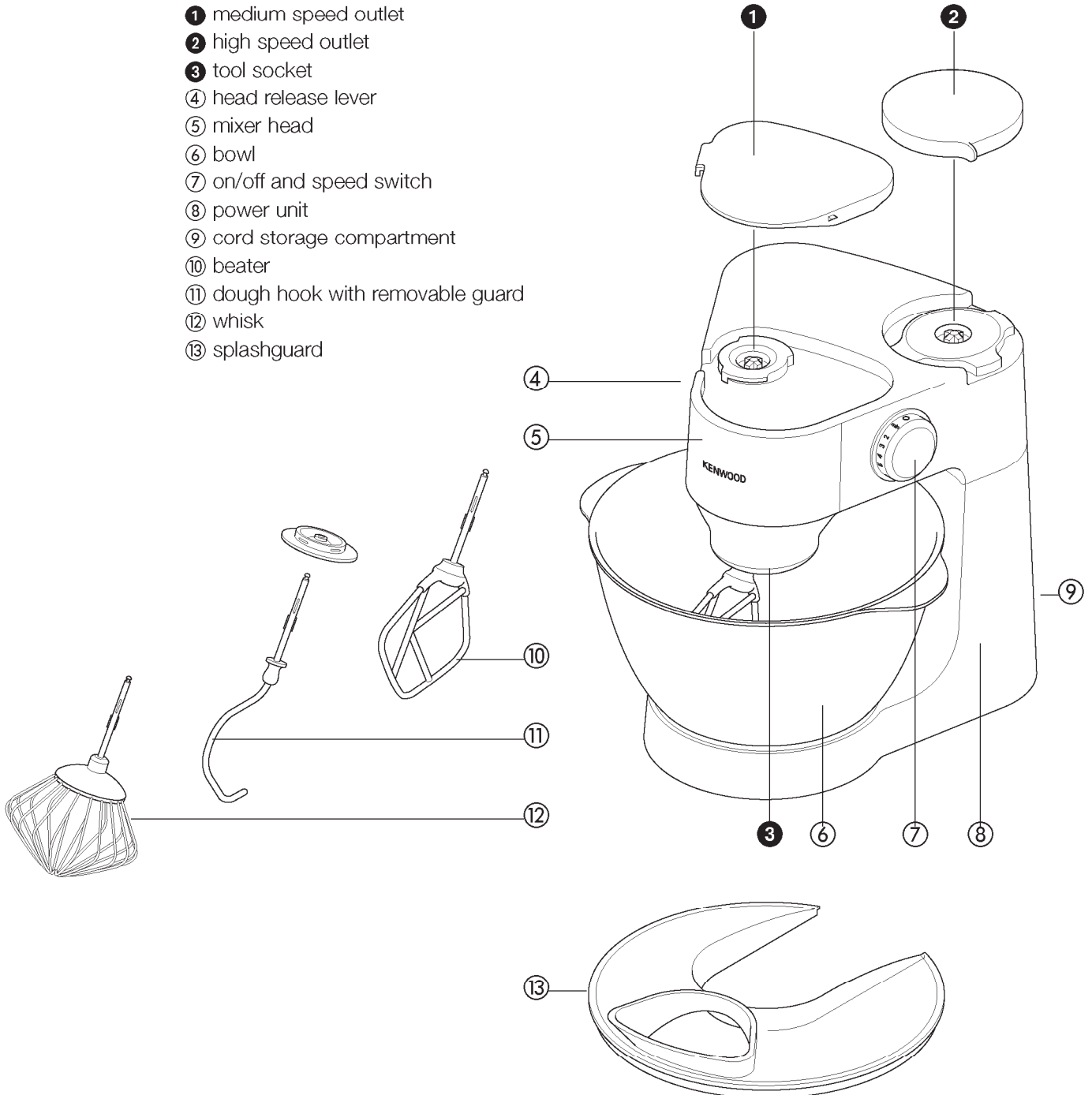
KENWOOD

before using for the first time

- 1 Remove all packaging.
- 2 Push excess cord in the cord storage compartment in the back of the mixer.
- 3 Wash the parts: see 'care and cleaning', page 8.

know your Kenwood kitchen machine

- 1 medium speed outlet
- 2 high speed outlet
- 3 tool socket
- 4 head release lever
- 5 mixer head
- 6 bowl
- 7 on/off and speed switch
- 8 power unit
- 9 cord storage compartment
- 10 beater
- 11 dough hook with removable guard
- 12 whisk
- 13 splashguard



the attachments available

To buy an attachment not included in your pack, see service and customer care.

attachment attachment code

liquidiser ① 1.5 l acrylic **AT262**

mincer ② **AT261** comes with medium and coarse screens

food processing attachment ③ **AT264** comes with

- a knife blade
- b reversible thick slicer/shredder
- c reversible thin slicer/shredder
- d rasping plate (grates parmesan cheese and potato for German potato dumplings)
- e citrus juicer

optional attachments f thin (julienne style) chipper plate

g standard chipper plate

h extra coarse shredder plate

centrifugal juicer ④ **AT265**

