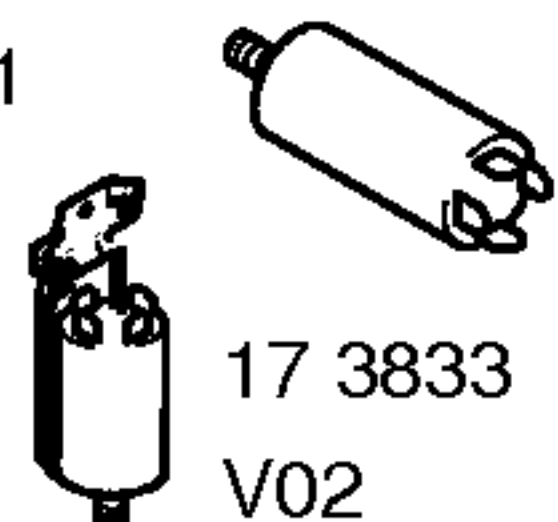
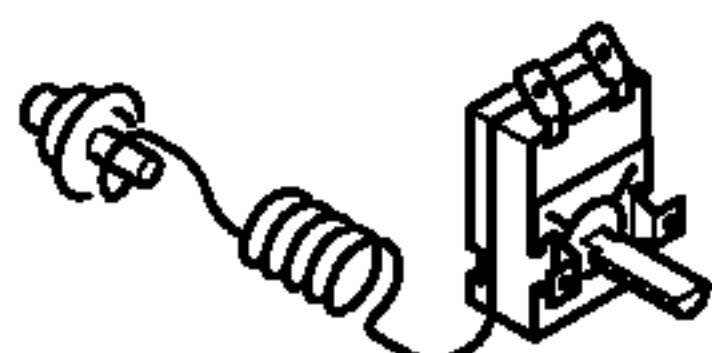


05 8808
V01



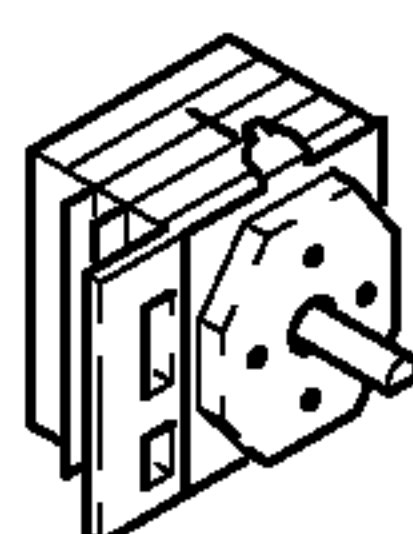
16 9589



16 2654



17 0703



06 9834



06 7364



16 2712



09 5200



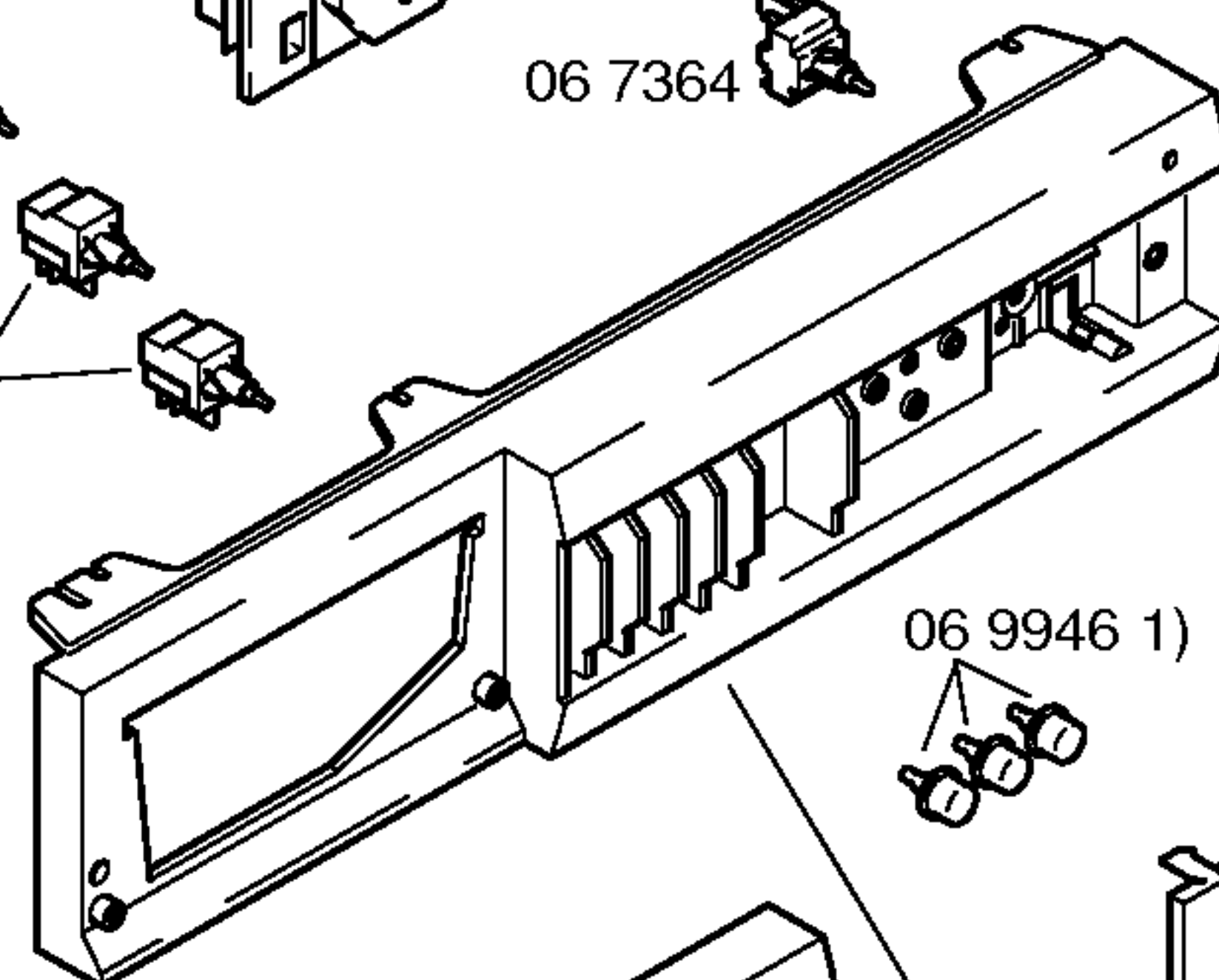
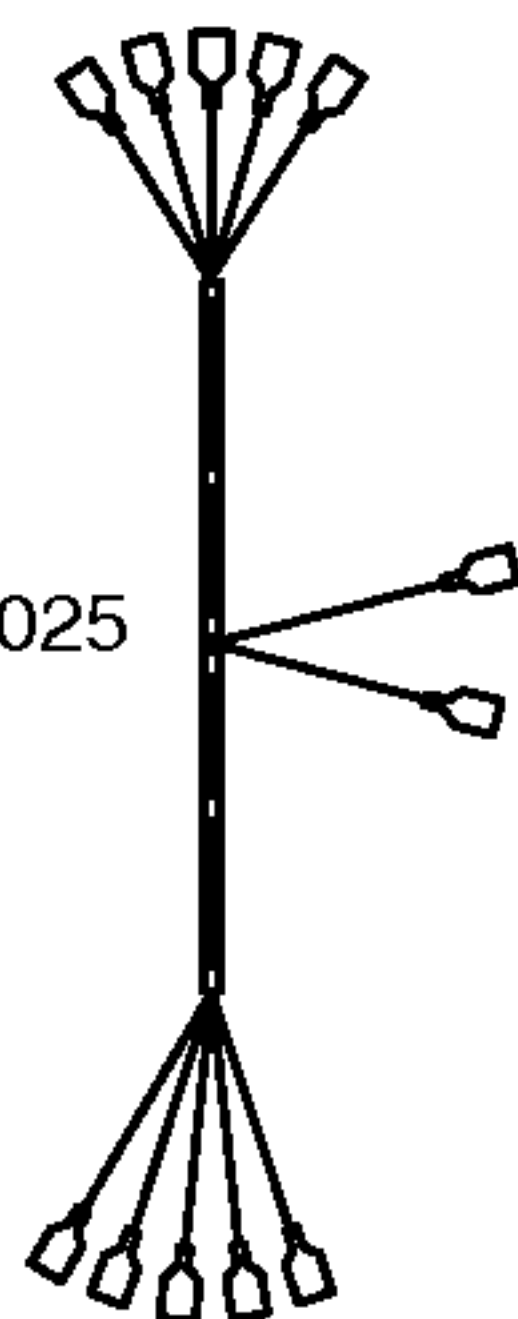
46 0715

V01

17 1253

V02

35 5025



06 7091 1)



06 9946 1)



15 1628

16 8333 1)



16 8335 1)



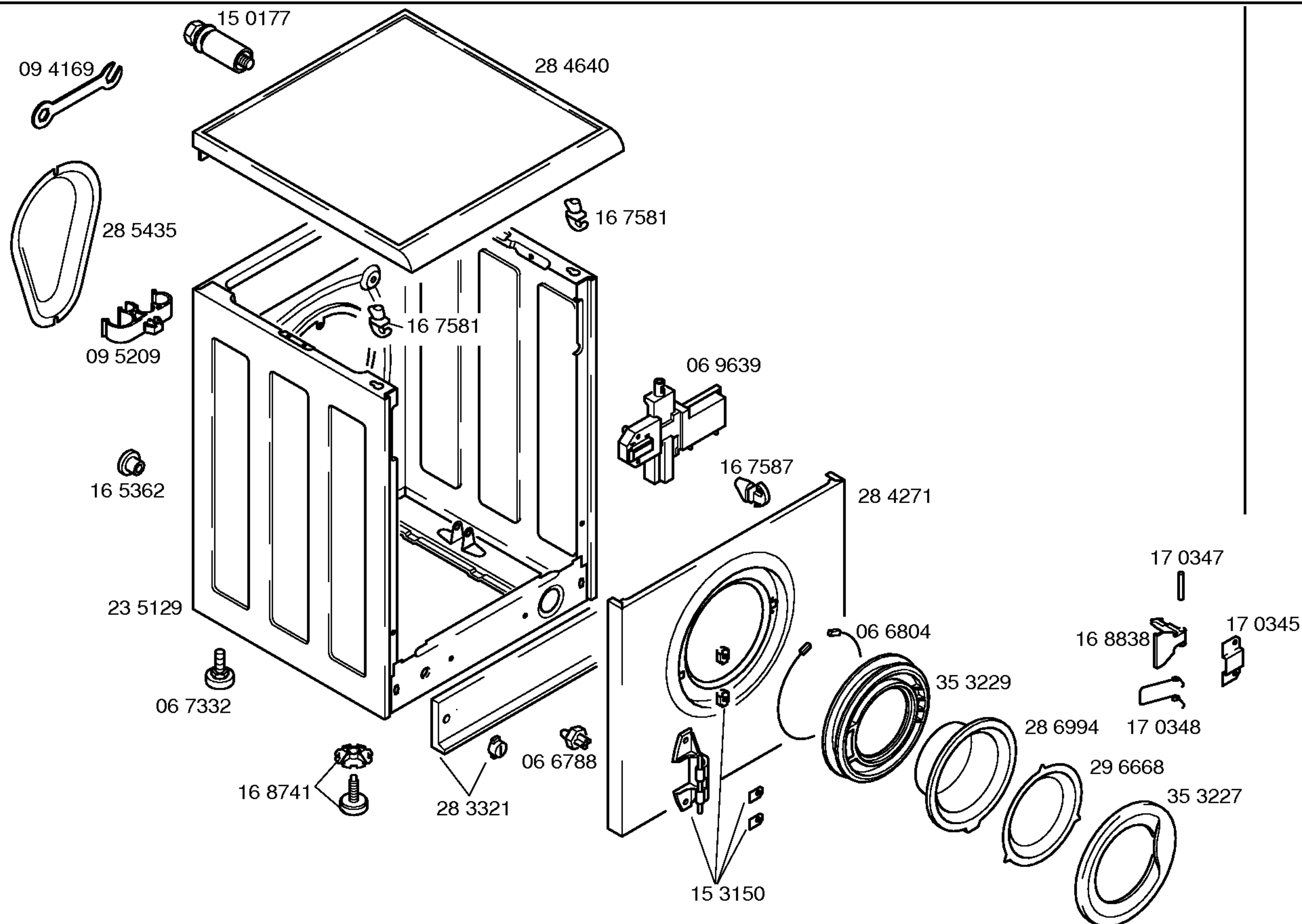
16 8334 1)

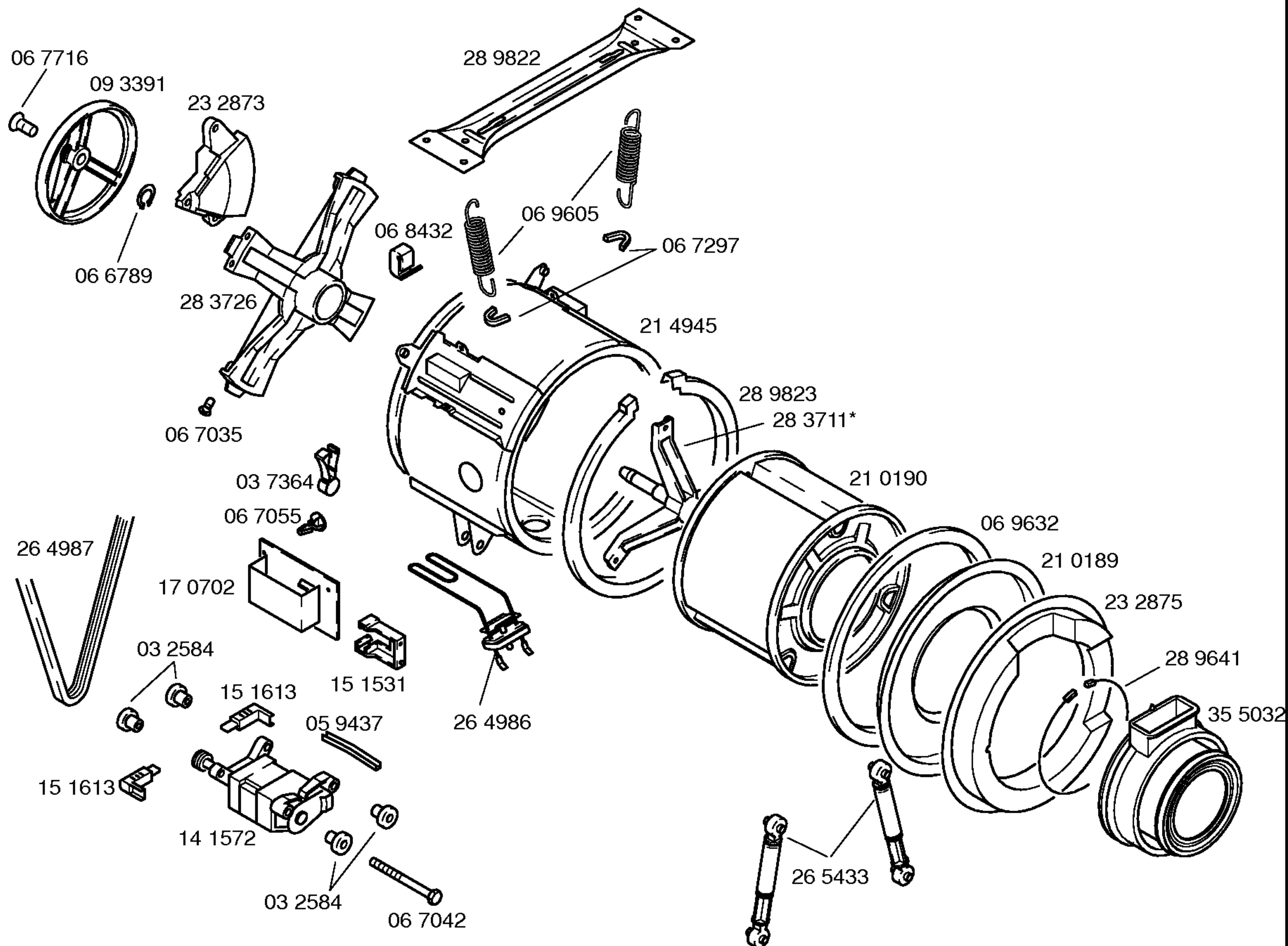


1)

Libro de instrucciones
52 3461
(E,P)

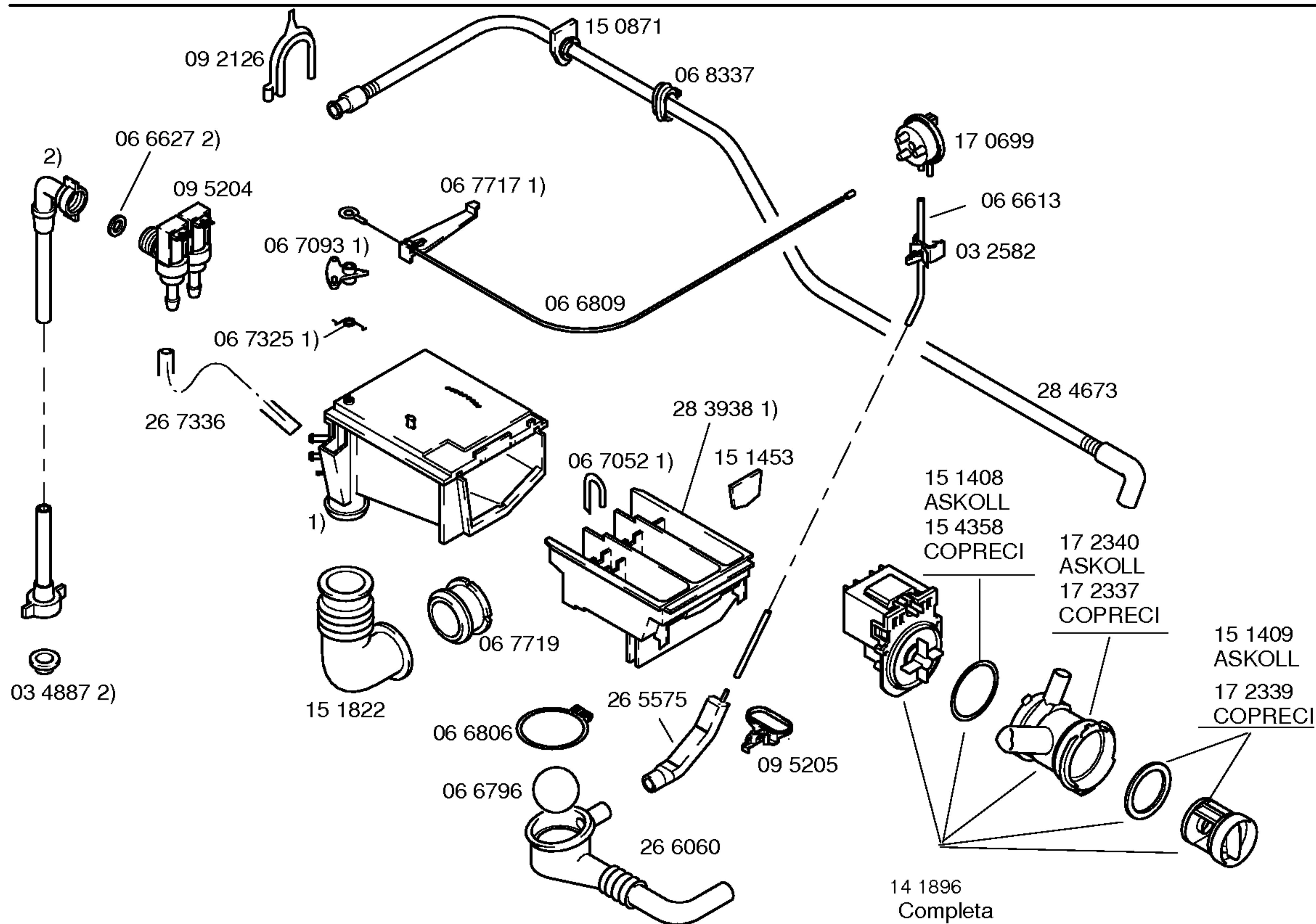
1) 35 1472
Completo





* Conjunto tornillería
05 9132

1) 15 2611



- 1) 35 1073 Completa
- 2) 46 0484

