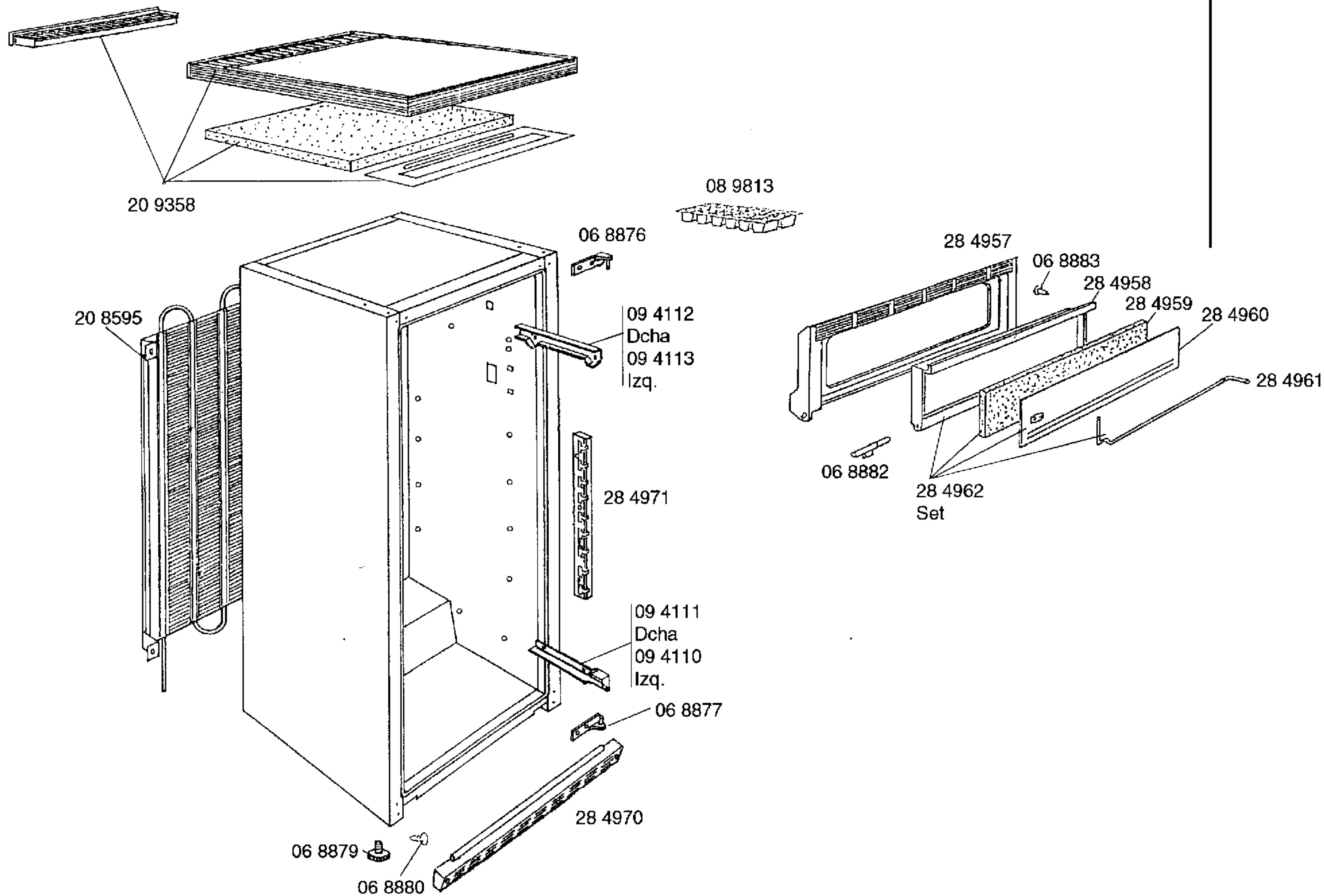
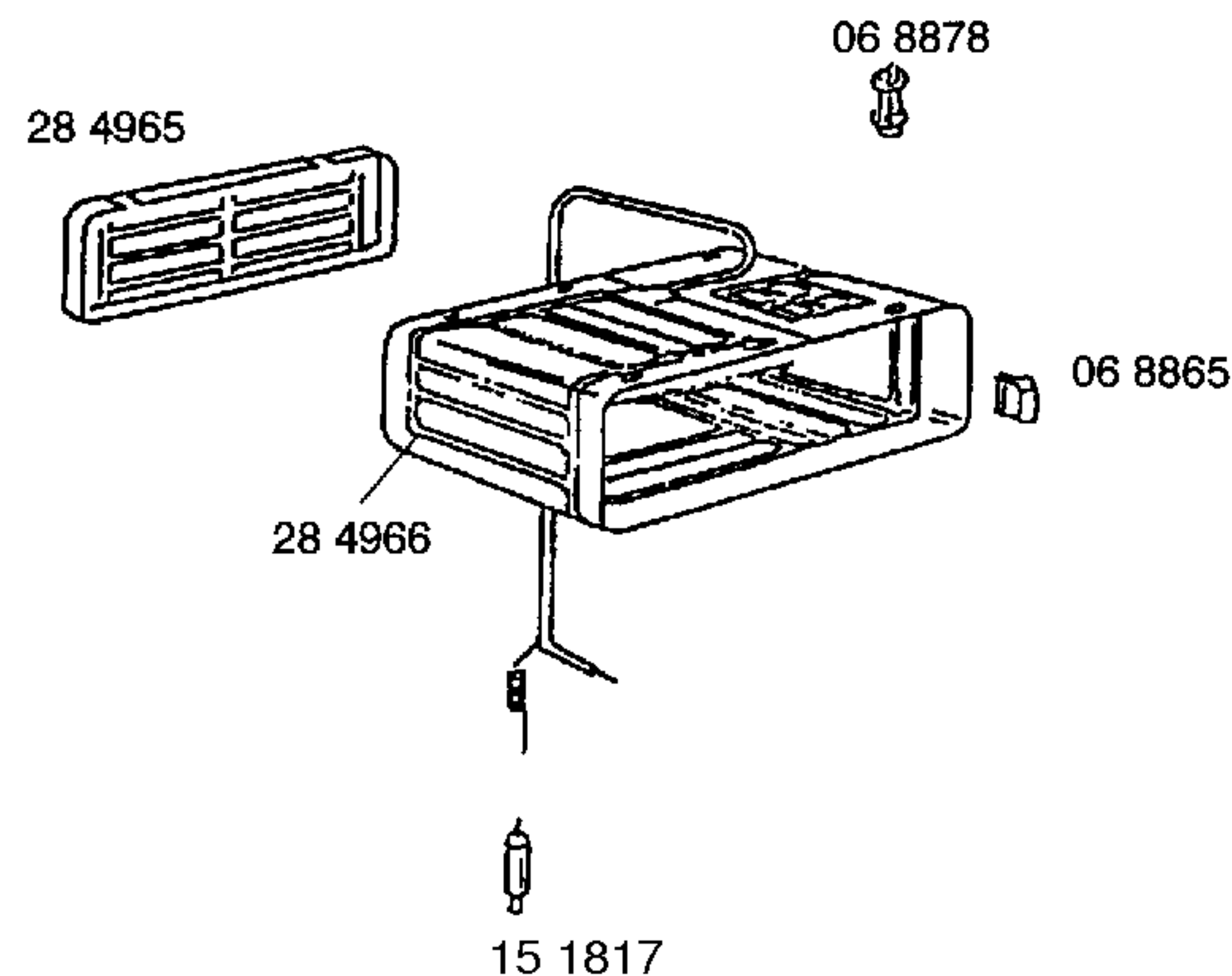
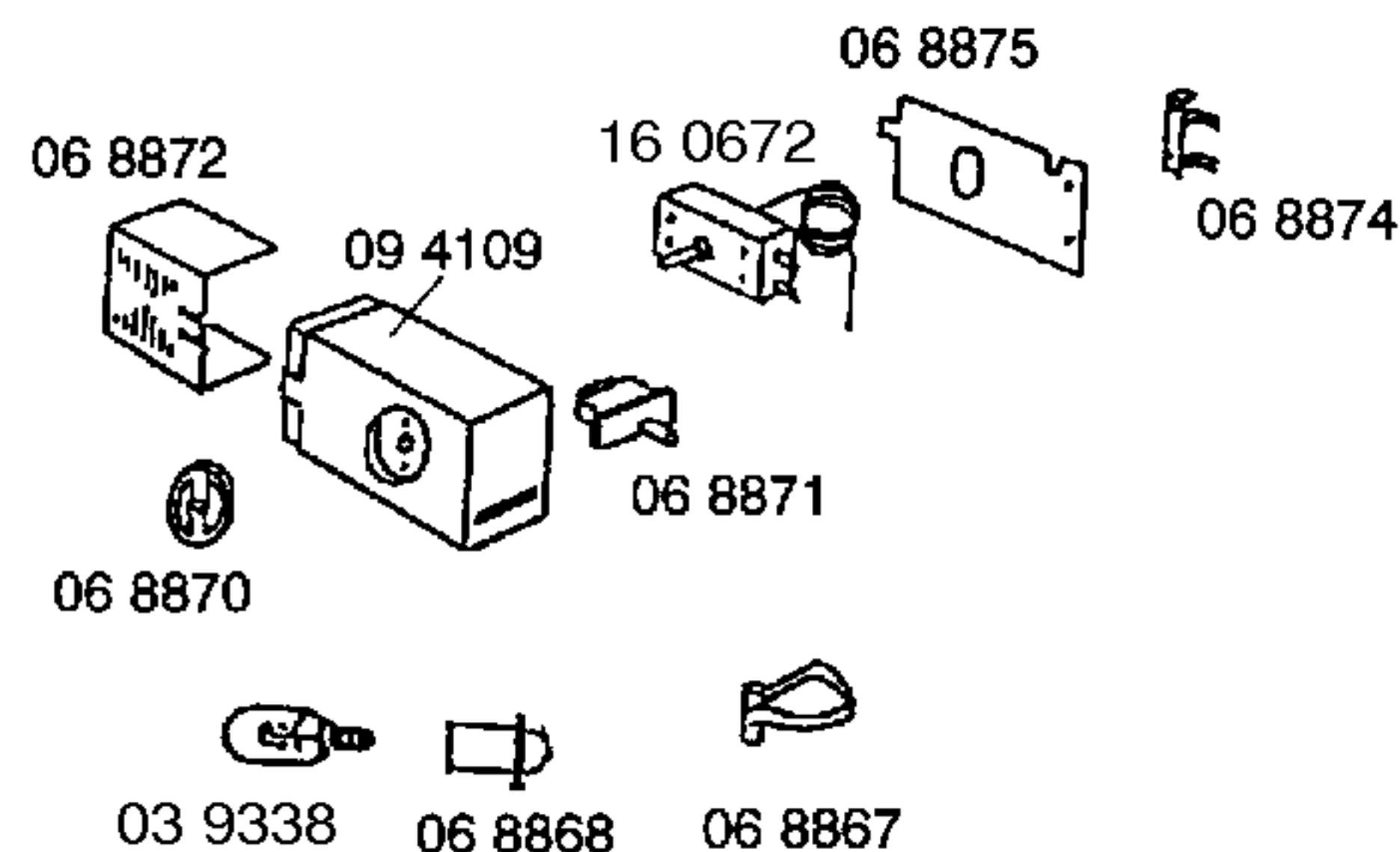
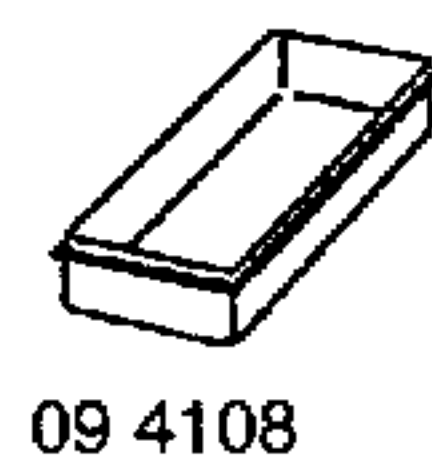
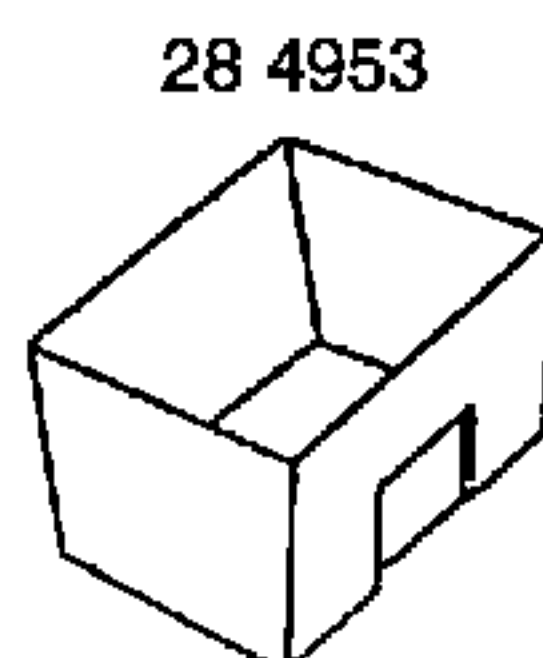
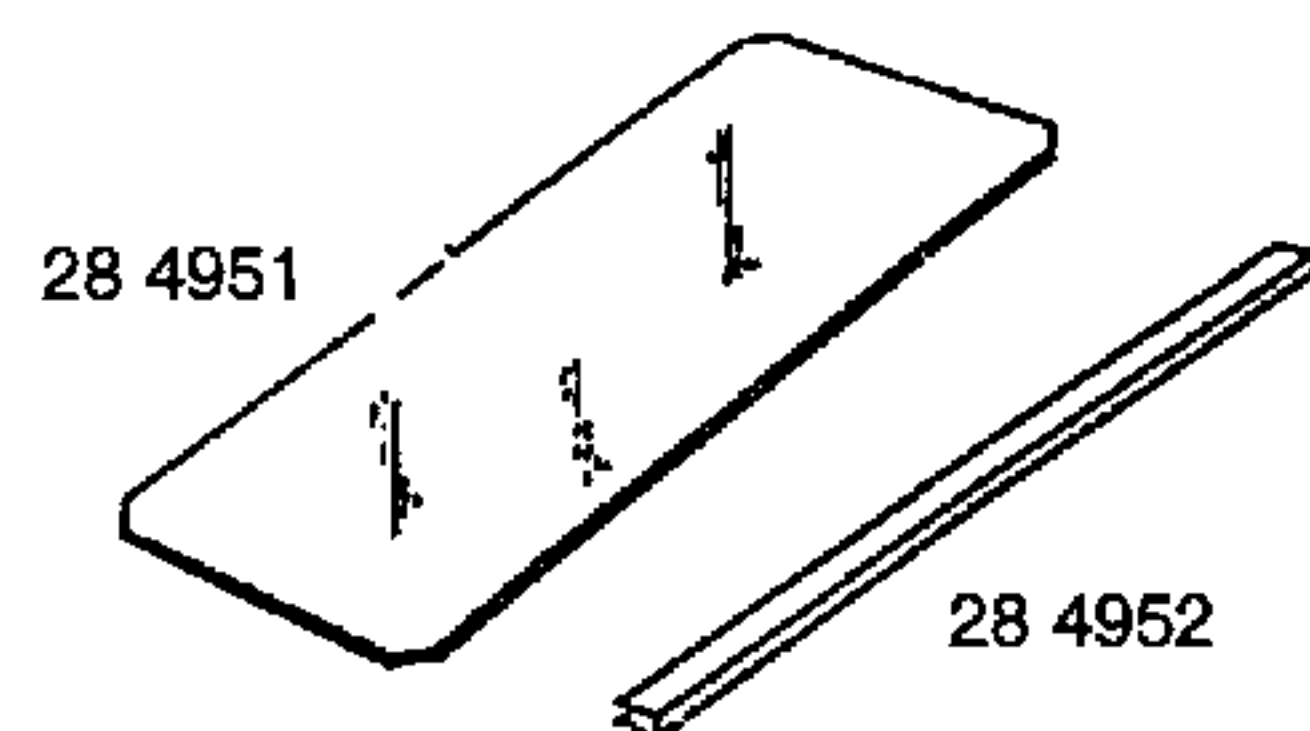
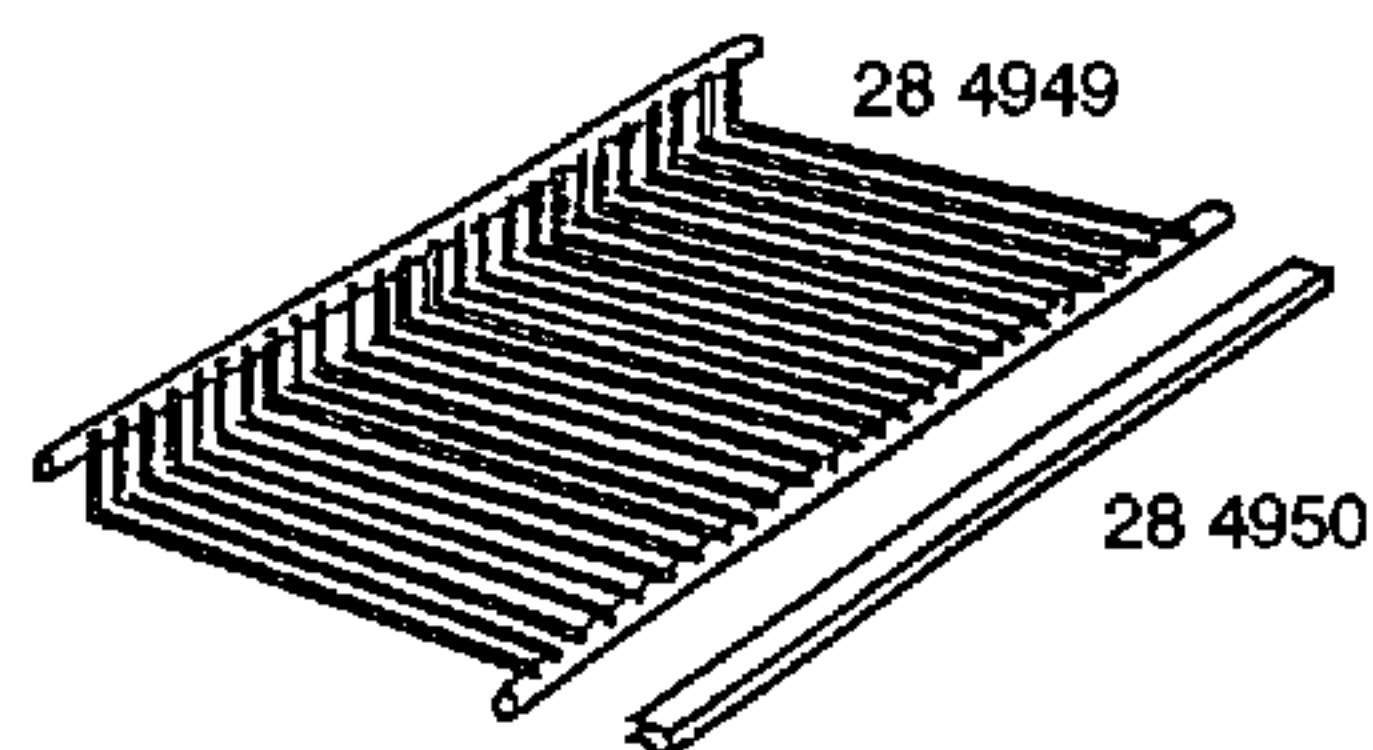
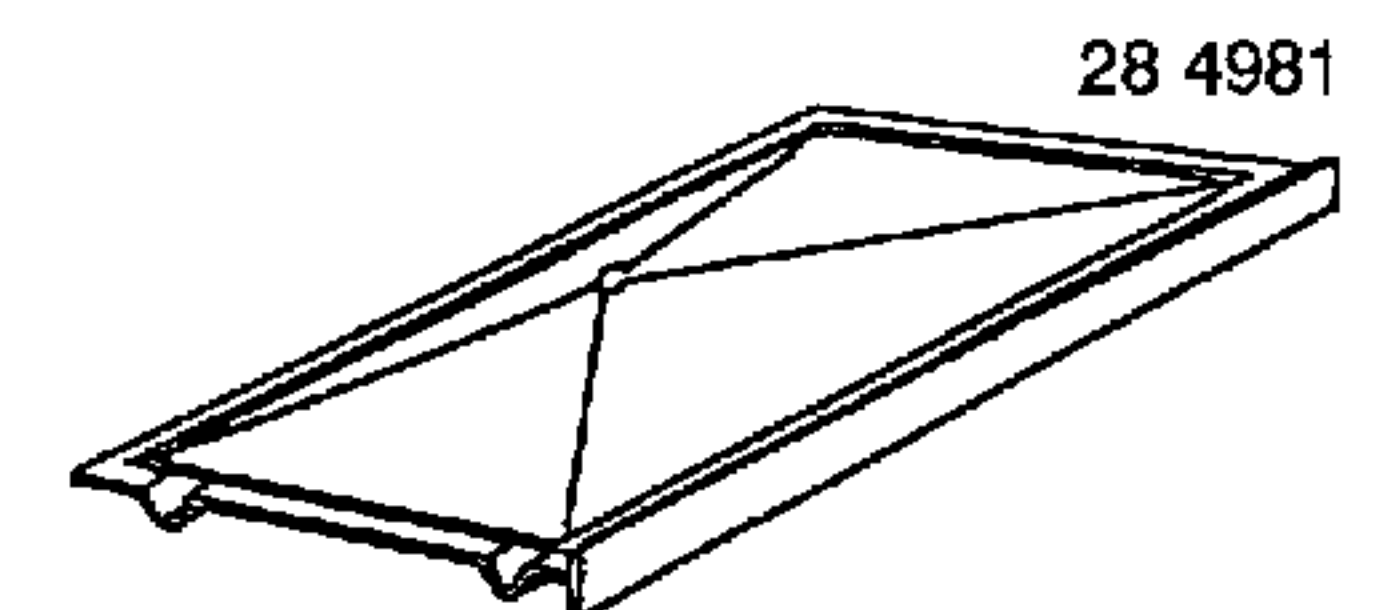
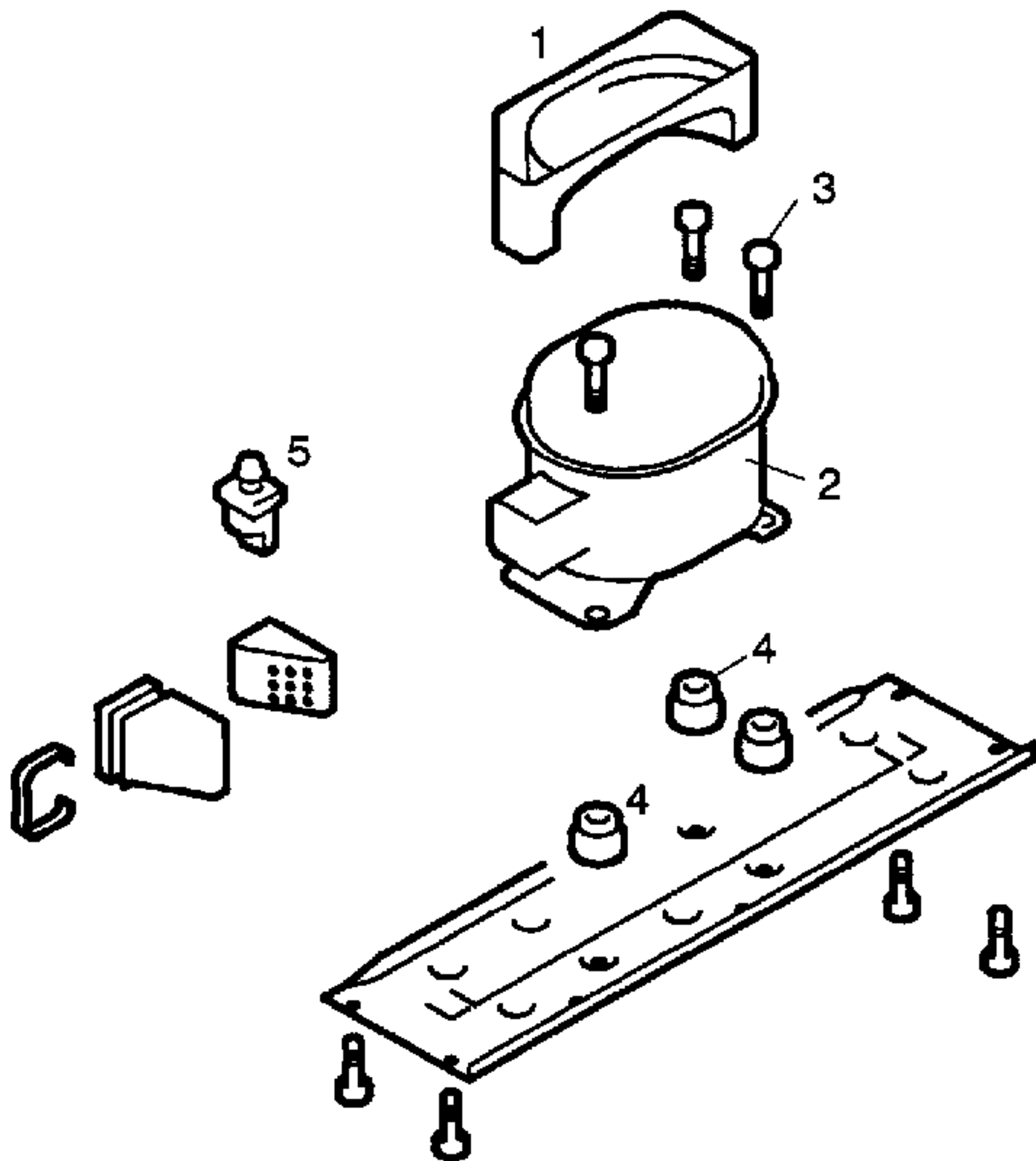


LIB. INSTRUCCIONES
51 6521
(E)







POSICION	FRIGORIFICO MATSUSHITA SO75LKAA
1	08 8868
2	14 0582
3	06 4259
4	06 4260
5	06 4055

TECHNISCHE DATEN/ TECHNICAL DATA/ DONNE ES TECHNIQUES/ DATOS TECNICOS

Verdichter/ Compressor/ Compresseur/ Compresor	B S I	
Typ/ Type/ Tipo	1 / 8	
Förderleistung/ Delivery/ Debit/ Aspiración l/h	641	
Anlaufstrom/Starling current/ Cour. démarrage/ Int. arranque A	5,69	
Widerstand/ Resistance/ Resistencia. Ha/main/prin. Ohm	24,4	
Hi/aux.	39,8	

Temp. Reyler/ Thermostat/ Termostato	ATEA	
Typ/ Type/ Tipo	520146	
Reglerstellung/ Position/ Conexión	TTO.A MINIMO + 7º	TTO.A MAXIMO + 7º
Schaltwerte/ Switching values/	..ein"/conex. °C - 4º	- 11º
Valeurs de commutation/ Desconex. (.. abtaven" od.)	..aus"/descon. ..alarm" - 12º	- 23º

Füllmenge/ Fill. quantity/ Charge/ Carga	R12	g	90	
--	-----	---	----	--

AnschluBwert/ Comm. load/ Puiss. Connect./ Potenc.	W	91	
--	---	----	--