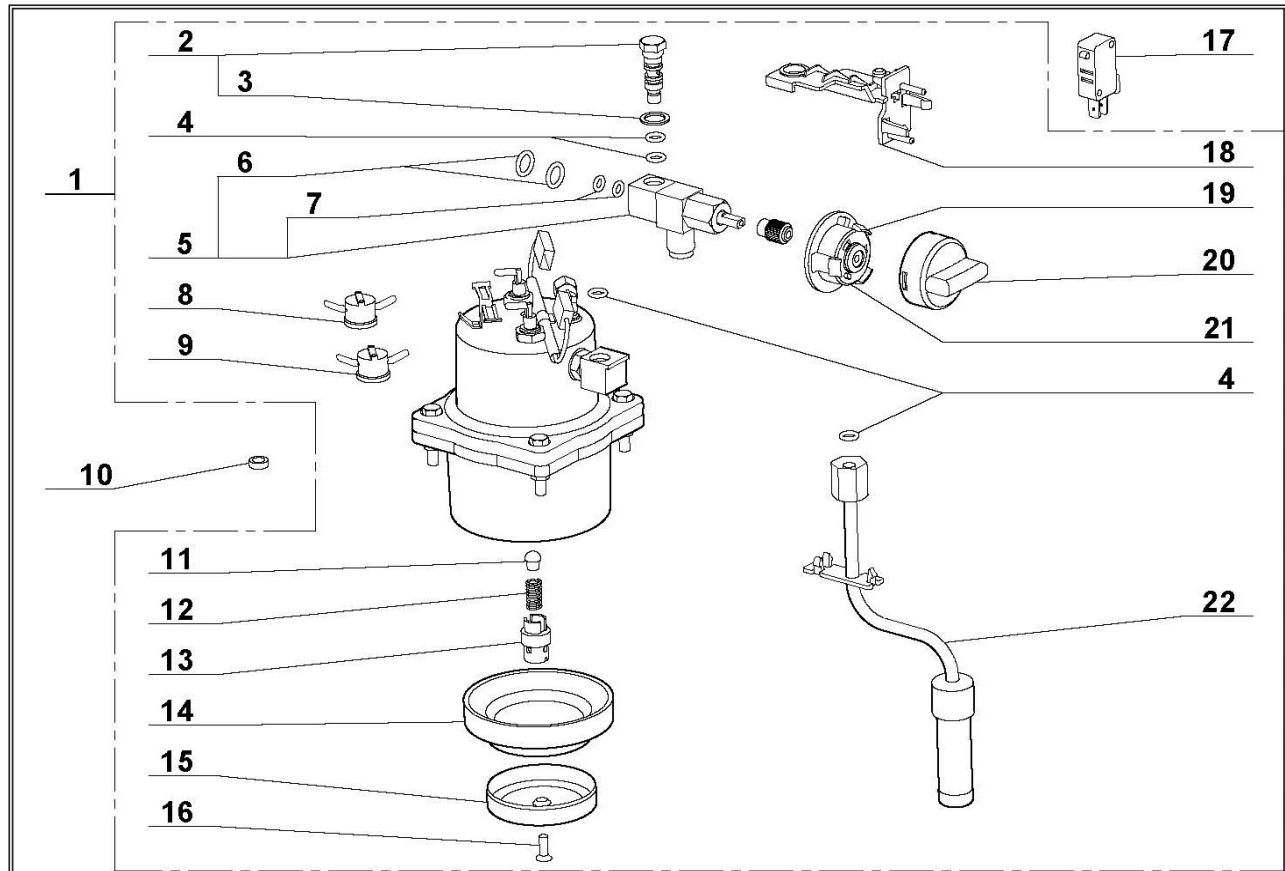


CHAUDIERE ALUMINIUM - ALUMINIUM HEATER

Index	Pièce / Part	Désignation	Description
1	504 833	CHAUDIERE	HEATER
2	502 218	THERMOSTAT 130°C	THERMOSTAT 130°C
3	503 765	THERMOFUSIBLE	THERMO FUSE
4	504 835	THERMOSTAT 90°C	THERMOSTAT 90°C
5	504 836	JOINT PORTE FILTRE	HEATER SEAL
6	502 226	BOUTON SOUPAPE	VALVE
7	502 225	RESSORT SOUPAPE	VALVE SPRING
8	504 837	VIS DE CLAPET	SCREW
9	504 839	JOINT TORIQUE 6,75 x 1,78	O-RING 6,75 x 1,78
10	504 838	RACCORD	CONNECTOR
11	503 776	MICRO SWITCH	MICRO SWITCH
12	503 762	BOUTON VAPEUR / EAU	STEAM KNOB
13	504 840	ROBINET	TAP
14	503 768	JOINT TORIQUE 5,7 x 1,9	O-RING 5,7 x 1,9
15	504 831	BUSE	STEAM TUBE



CHAUDIERE INOX - STAINLESS STEEL HEATER

Index	Pièce / Part	Désignation	Description
1	504 834	CHAUDIERE INOX	STAINLESS STEEL HEATER
2	503 766	VIS TUBE	SCREW TUBE
3	503 767	JOINT 14 x 9	SEAL 14 x 9
4	503 768	JOINT TORIQUE 5,7 x 1,9	O-RING 5,7 x 1,9
5	503 772	ROBINET VAPEUR	STEAM TAP
6	503 770	JOINT TORIQUE 9 x 2	O-RING 9 x 2
7	503 771	JOINT TORIQUE 5,28 x 1,78	O-RING 5,28 x 1,78
8	503 764	THERMOSTAT 95°C	THERMOSTAT 95°C
9	502 218	THERMOSTAT 130°C	THERMOSTAT 130°C
10	503 779	RONDELLE PLASTIQUE	PLASTIQUE WASHER
11	502 226	BOUTON SOUPAPE	VALVE
12	502 225	RESSORT SOUPAPE	VALVE SPRING
13	504 803	SUPPORT SOUPAPE	VALVE SUPPORT
14	502 227	JOINT PORTE FILTRE	HEATER SEAL
15	504 660	PASSOIR	STRAINER
16	504 659	VIS DE FIXATION	SCREW
17	503 776	MICRO SWITCH	MICRO SWITCH
18	503 769	SUPPORT SWITCH	SWITCH SUPPORT
19	502 261	ENTRETOISE BOUTON VAPEUR	STEAM KNOB BRACE
20	503 762	BOUTON VAPEUR	STEAM KNOB
21	503 773	CAME ROBINET	TAP CAM
22	504 832	BUSE	STEAM TUBE