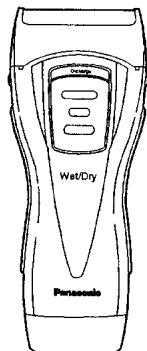


# Service Manual

## Wet/Dry Rechargeable Shaver



**ES3040**  
**ES3041**  
**ES3042**

### SPECIFICATIONS

Power source	AC100-120V, 50-60Hz (Automatic voltage conversion)
Motor voltage	1.2V DC
Power consumption	6W
Charging time	8-hours
Weight	140g
	<SUPPLIED ACCESSORIES>
Soft case	

### **⚠ WARNING**

This service information is designed for experienced repair technicians only and is not designed for use by the general public. It does not contain warnings or cautions to advise non-technical individuals of potential dangers in attempting to service a product. Products powered by electricity should be serviced or repaired only by experienced professional technicians. Any attempt to service or repair the product or products dealt with in this service information by anyone else could result in serious injury or death.

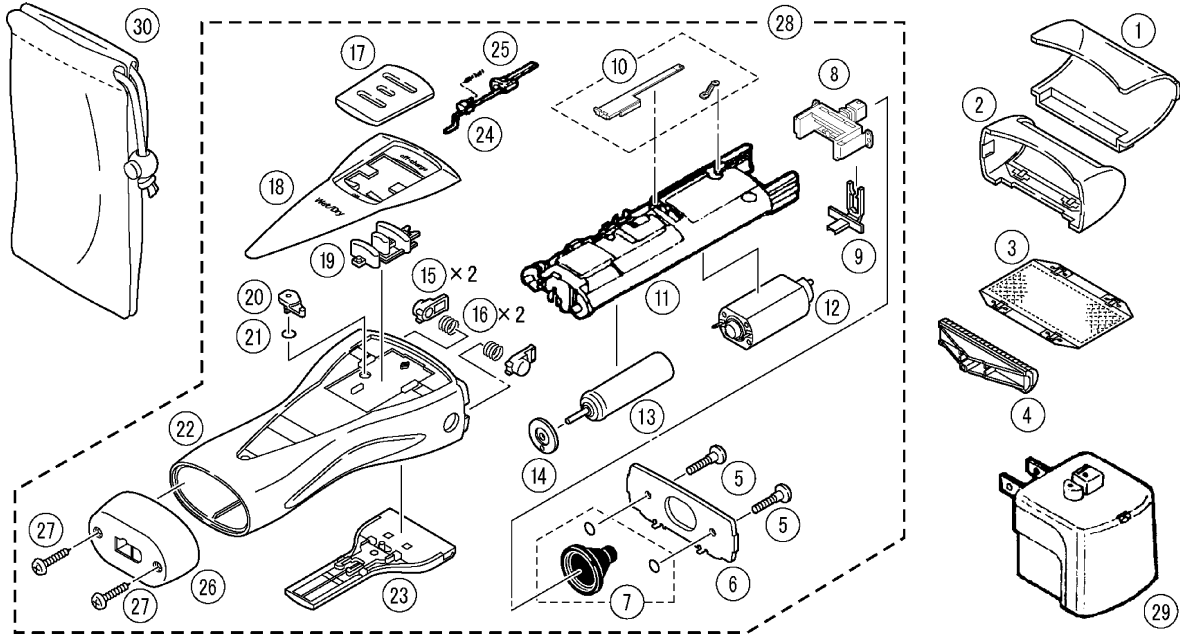
### CONTENTS

	Page		Page
1 SCHEMATIC DIAGRAM .....	2	5 TROUBLESHOOTING GUIDE .....	5
2 WIRING CONNECTION DIAGRAM .....	2	6 EXPLODED VIEW .....	6
3 DISASSEMBLY METHOD .....	3	7 REPLACEMENT PARTS LIST .....	6
4 CAUTION IN ASSEMBLY .....	4		

**Panasonic®**

© 2001 Matsushita Electric Works, Ltd. All rights reserved. Unauthorized copying and distribution is a violation of law.

## 6 EXPLODED VIEW



## 7 REPLACEMENT PARTS LIST

Ref. No.	Part No.	Part Name & Description	Remarks	Per Unit
1	WES3040X7158	PROTECTIVE CAP		(BG) 1
2	WES3050S0047	OUTER FOIL FRAME	ES3040/3042	(BG) 1
2	WES3041K0048	OUTER FOIL FRAME	ES3041	(BG) 1
3	WES9941P	OUTER FOIL		1
4	WES9942P	INNER BLADE		1
5	WES762L9707	SCREW	*C	2
6	WES3050L0207	RETAINING PLATE		(BG) 1
7	WES366L0328	WATERPROOF RUBBER		1
8	WES366L1248	DRIVING HEAD		(BG) 1
9	WES366K1088	TRIMMER DRIVING BAR		(BG) 1
10	WES365L0057	TERMINAL PLATE		(BG) 1
11	WES365L0777	CHASSIS		(BG) 1
12	WES364L1007	MOTOR		(BG) 1
13	WES365L2508	RECHARGEABLE BATTERY		(BG) 1
14	WES365L0307	SPACER		(BG) 1
15	WES4001H3267	RELEASE BUTTON	*C	(BG) 2
16	WES4001L0177	SPRING FOR RELEASE BUTTON	*C	(BG) 2
17	WES3050S3207	SWITCH HANDLE		(BG) 1
18	WES3040S3968	SWITCH PANEL	ES3040/3041	(BG) 1
18	WES3042A3968	SWITCH PANEL	ES3042	(BG) 1
19	WES3050A0367	LOCK BUTTON		(BG) 1
20	WES3050L1667	SWITCH CAM		(BG) 1
21	WES663L0977	SWITCH O-RING		1
22	WES3040S3058	HOUSING	ES3040	(BG) 1
22	WES3041K3058	HOUSING	ES3041	(BG) 1
22	WES3042S3058	HOUSING	ES3042	(BG) 1
23	WES4001K1507	TRIMMER	ES3040/3042	(BG) 1
23	WES3041K1508	TRIMMER	ES3041	(BG) 1
24	WES365L1577	PLUG LEVER		(BG) 1
25	WES365L0187	LEVER SPRING		(BG) 1
26	WES3040H3848	BOTTOM COVER	ES3040/3042	(BG) 1
26	WES3041K3848	BOTTOM COVER	ES3041	(BG) 1
27	WES762L6007	SCREW	*C	2
28	WES3040S3038	BODY BLOCK	ES3040	(BG) 1
28	WES3041K3038	BODY BLOCK	ES3041	(BG) 1
28	WES3042S3038	BODY BLOCK	ES3042	(BG) 1
29	WES365H7658	CHARGING ADAPTOR	A-2PLUG	(BG) 1
30	WES4001K7007	SOFT CASE		(BG) 1
-	WES3040S8108	OPERATING INSTRUCTIONS		(BG) 1