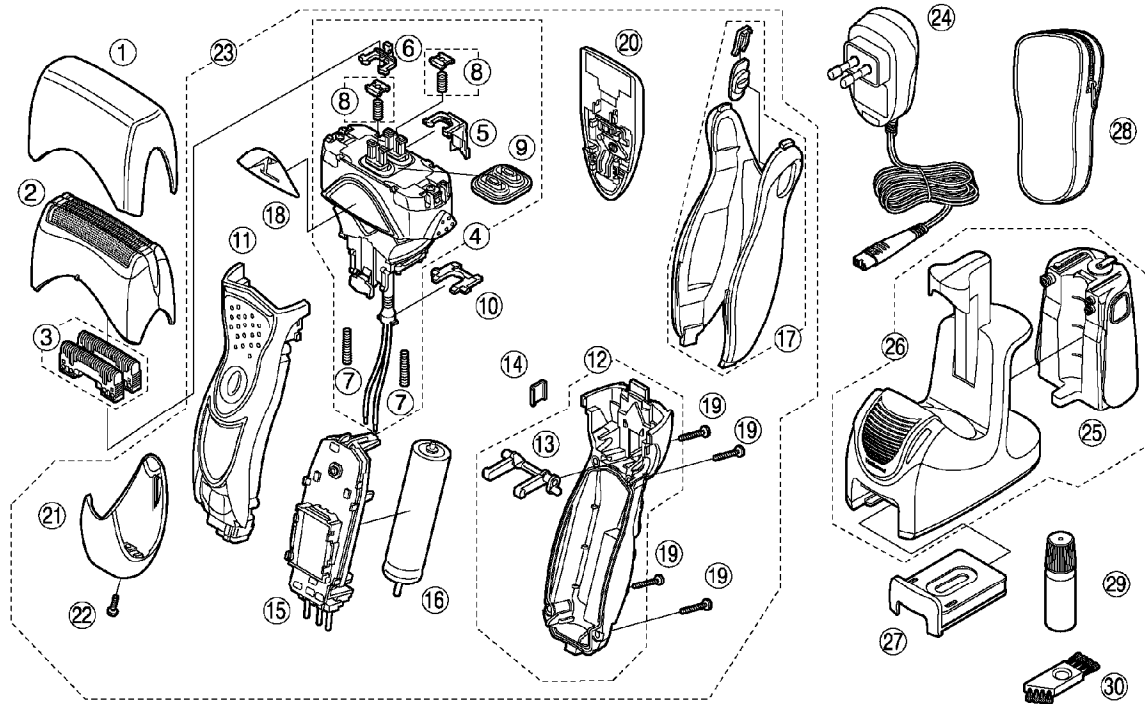


6 EXPLODED VIEW



7 REPLACEMENT PARTS LIST

NOTE:

*A=available as an optional accessory

*B=only available as set

*C=available individually

Ref. No.	Part No.	Part Name & Description	Remarks	Per Unit
1	WES8162X7158	PROTECTIVE CAP		1
2	WES9065Y	OUTER FOIL		1
3	WES9066Y	INNER BLADE	*B (2PCS/PK)	1ST
4	WES8176L1007	LINEAR MOTOR ASSEMBLY		1
5	WES8176L1087	TRIMMER DRIVING BAR		1
6	WES8176L1077	SLIT BLADE DRIVING BAR		1
7	WES8176L0227	FLOAT SPRING	*B (2PCS/PK)	2
8	WES8176L0587	SPRING AND STOPPER	*B (2SETS/PK)	2
9	WES8196L0328	WATERPROOF RUBBER		1
10	WES8176L0207	TUBE HOLDER		1
11	WES8168S3058	HOUSING A		1
12	WES8175S3068	HOUSING B		1
13	WES8176L1157	LOCK LEVER SHAFT		1
14	WES8176L0167	HOUSING CLIP		1
15	WES8163L2128	MODULE		1
16	WES8163L2506	RECHARGEABLE BATTERY	LM-ION TYPE	1
17	WES8168K3368	REAR PANEL		1
18	WES8168K3348	LOGO PLATE		1
19	WES8176L6007	P TIGHT SCREW	*C M2-12	4
20	WES8195K1507	TRIMMER		1
21	WES8168S3848	BOTTOM COVER		1
22	WES8176L6057	TAPPING SCREW	M2-8	1
23	WES8168S3039	BODY BLOCK		1
24	WES8163K7764	CHARGING ADAPTOR	C-2 PLUG	1
25	WES8176A7357	WATER TANK		1
26	WES8168H4218	SELF-CLEANING RECHARGER		1
27	WES035K7771	DETERGENT CARTRIDGE	*B (2PCS/PK)	1ST
28	WES8176K7016	SOFT CASE		1
29	WES8196X7918	OIL		1
30	WES8093H7057	CLEANING BRUSH		1
-	WES8168S8009	INDIVIDUAL BOX		1
-	WES8168S8109	OPERATING INSTRUCTIONS		1