

Service Manual

Vacuum Cleaner

MC-E8011 / MC-E8013
MC-E8015



Please file and use this manual together with the service manual for Models No. MC-E8001, MC-E8003, Order No. MAES030602C2.

SPECIFICATIONS

Model	MC-E8011	MC-E8013	MC-E8015
Power source	230-240V~50Hz	230-240V~50Hz	230-240V~50Hz
Input power (max.)	1800W	1900W	1900W
Vacuum	22 kPa	23 kPa	23 kPa
Mains lead length	6.5 m	6.5 m	6.5 m
Radius of operation	9.8 m	9.8 m	9.8 m
Net weight	7.5 kg	7.5 kg	7.5 kg
Dimensions (L x W x H)	420 x 300 x 290	420 x 300 x 290	420 x 300 x 290
Attachments: Floor nozzle	•	•	•
Telescopic wand	•	•	•
Dusting brush	•	•	•
Crevice nozzle	•	•	•

- Specifications are subject to change without notice for further improvement.

WARNING

This service information is designed for experienced repair technicians only and is not designed for use by the general public. It does not contain warnings or cautions for advise non-technical individuals of potential dangers in attempting to service a product. Products powered by electricity should be serviced or repaired only by experienced professional technicians. Any attempt to service or repair the product or products dealt with in this service information by anyone else could result in serious injury or death.

Panasonic

© 2004 Matsushita Electric España, S.A. All rights reserved. Unauthorized copying and distribution is a violation of law.

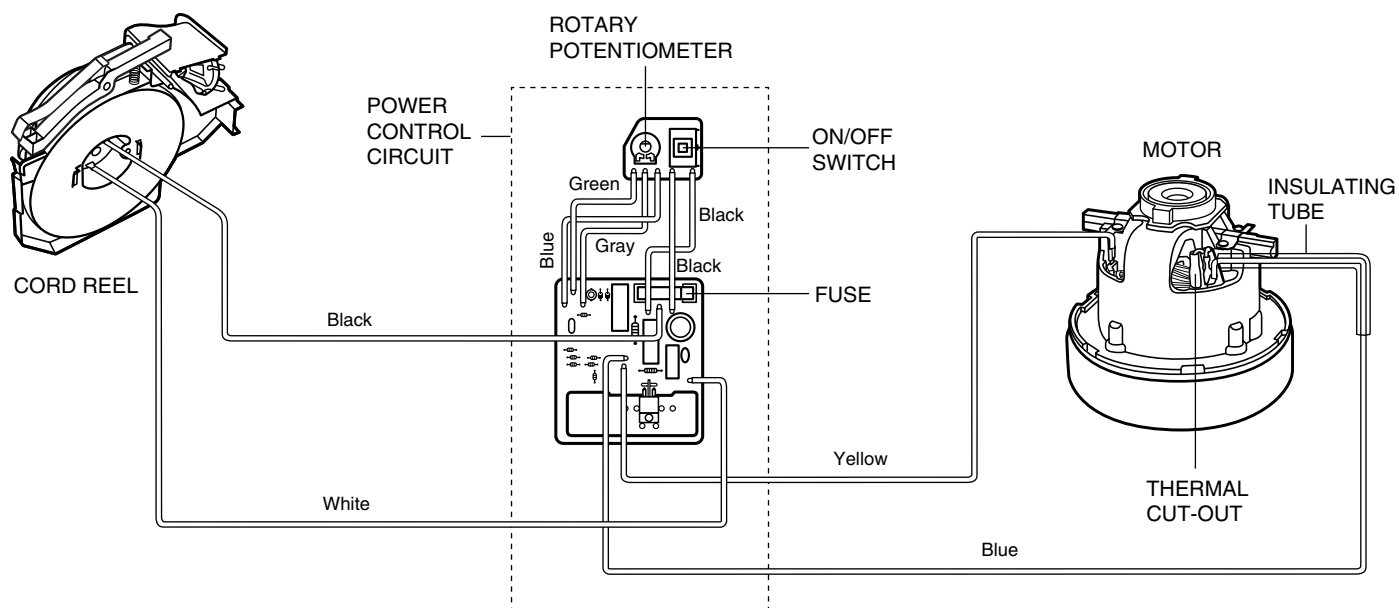
CONTENTS

- 1 PICTORIAL DIAGRAM**
- 2 SCHEMATIC DIAGRAM**
- 3 EXPLODED VIEW (BODY UNIT)**
- 4 PARTS LIST (BODY UNIT)**
- 5 EXPLODED VIEW (ATTACHMENTS)**
- 6 PARTS LIST (ATTACHMENTS)**
- 7 PACKING INSTRUCTIONS**
- 8 PACKING LIST**

NOTE: Replacement of main parts are common with models MC-E8001, MC-E8003.

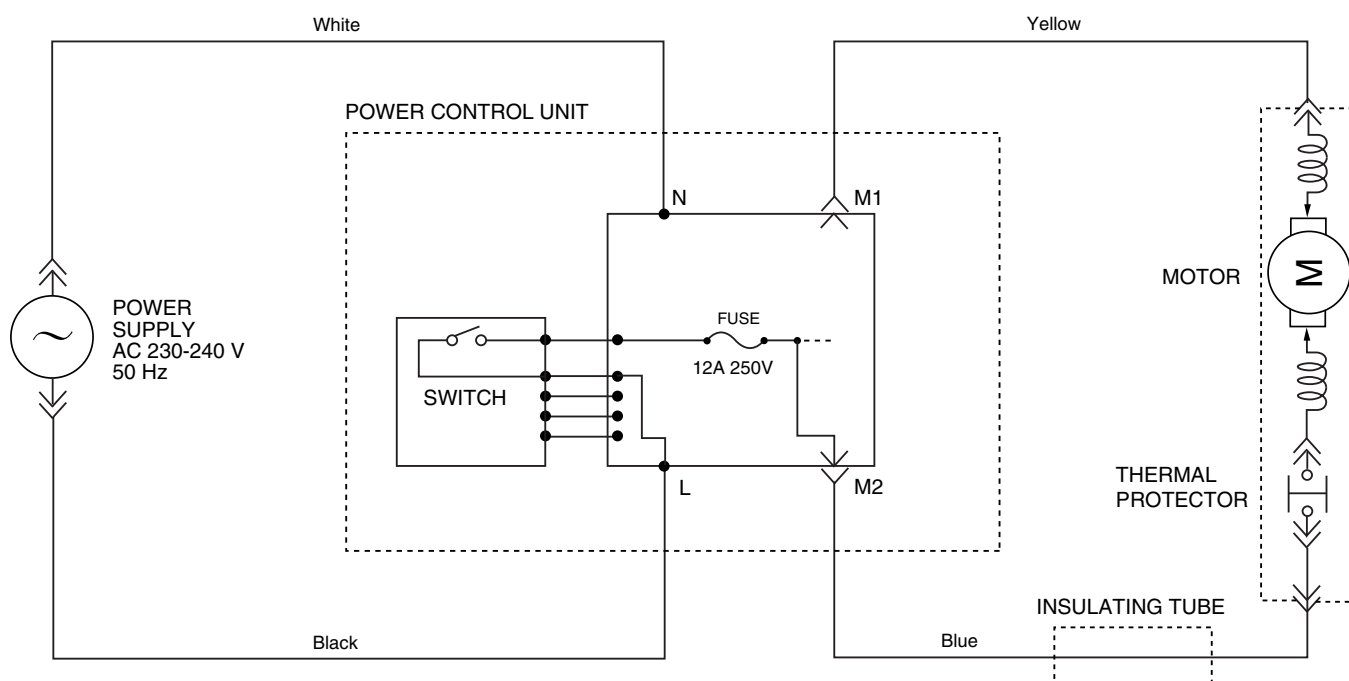
1 PICTORIAL WIRING DIAGRAM

MODELS MC-E8011 / MC-E8013 / MC-E8015

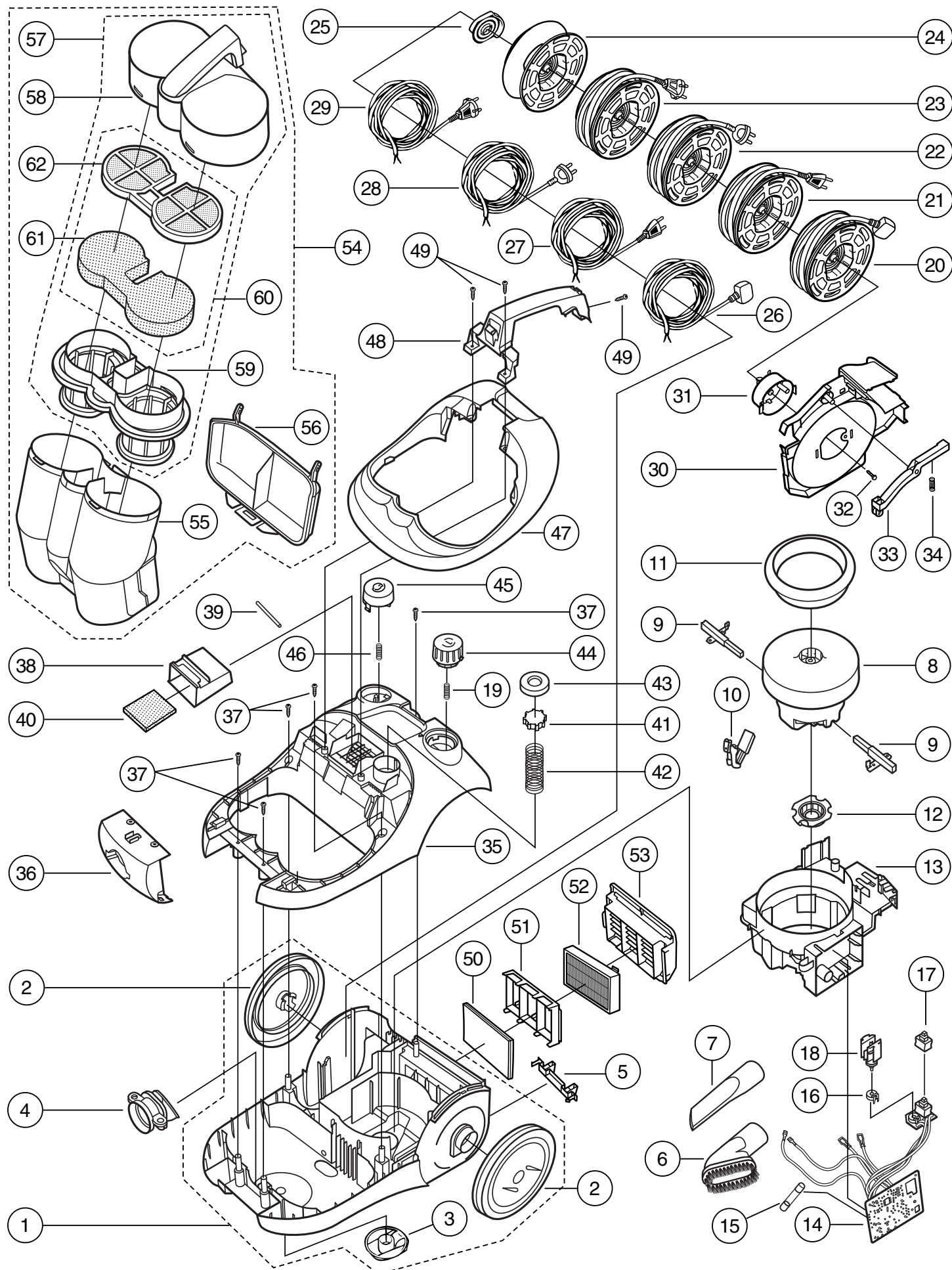


2 SCHEMATIC DIAGRAM

MODELS MC-E8011 / MC-E8013 / MC-E8015



3 EXPLODED VIEW (BODY UNIT)



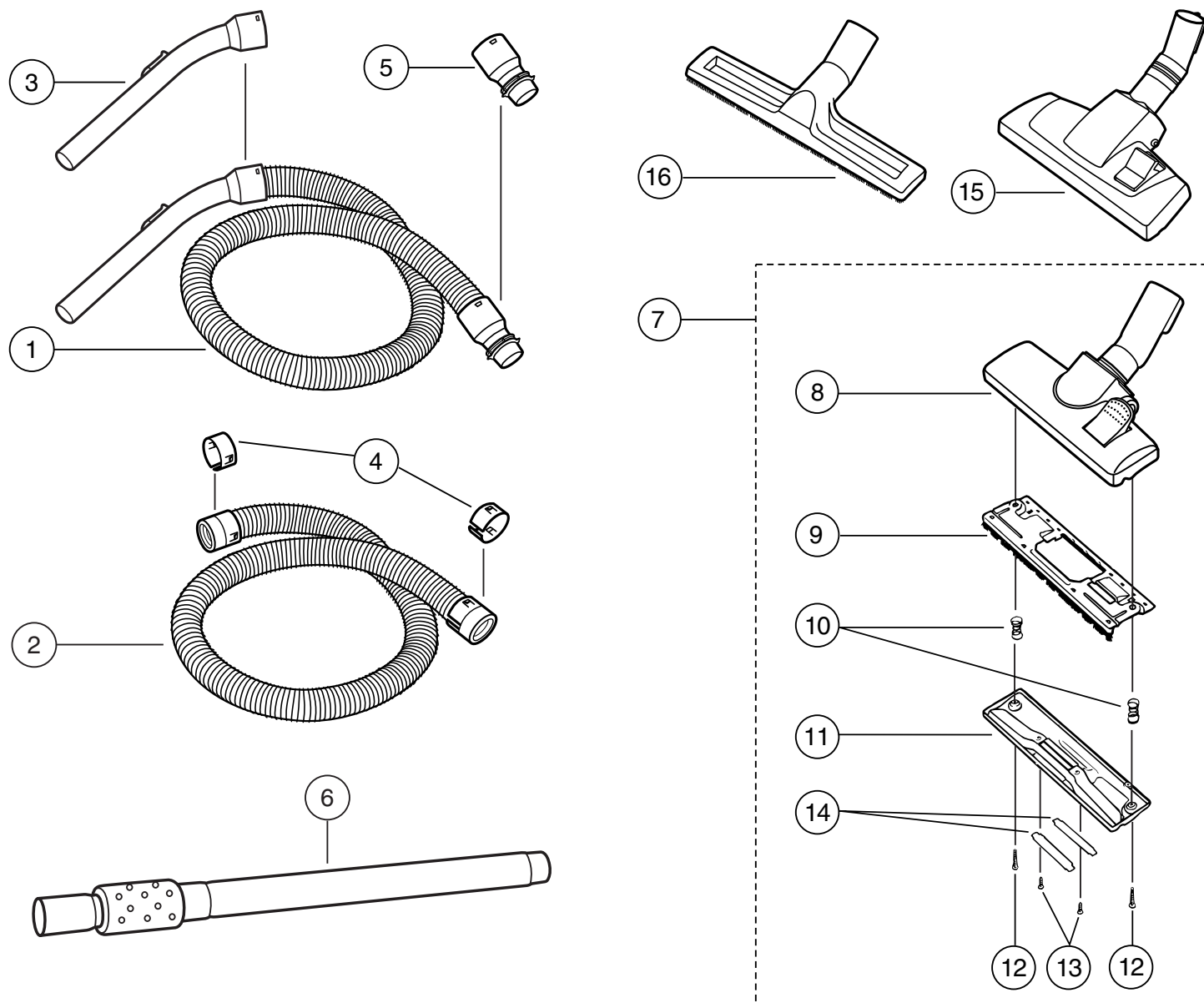
4 PARTS LIST (BODY UNIT)

Ref.:No.	Part No.	Part name & Description	Remarks
1	AMC8C99AM0E2	Lower body ass'y	MC-E8011 / Green colour
	AMC8C99AT061	Lower body ass'y	MC-E8013 / Black colour
	AMC8C99AM061	Lower body ass'y	MC-E8013 / Black colour (only UK)
	AMC8C99AN0P6	Lower body ass'y	MC-E8015 / Metallic blue colour
2	AMC8R01V1061	Wheel	MC-E8011 & (MC-E8013 Only UK)
	AMC8R01AT061	Wheel	MC-E8013
	AMC8R01AM0Z9	Wheel	MC-E8015 / Blue colour
3	AMC8R99AM061	Caster	
4	AMC8T12AM000	Suction packing	
5	AMC8A73AM061	Accessory support	
6	AMC8A97E1034	Dusting brush	
7	AMC8A13E1034	Crevice nozzle	
8	AMC8E99AR000	Motor 230-240V~50Hz	
9	AMC8EY0AM000	Carbon brush	
10	AMC8E14AM000	Thermal cut-out	
11	AMC8E08AM000	Front motor support	
12	AMC8E09T0000	Rear motor support	
13	AMC8E10AM000	Motor cover	
14	AMC8E91AR000	Power control circuit	
15	AMC8B42AM000	Fuse 12A	
16	AMC8E69AM000	Rotary potentiometer	
17	AMC8E01AM000	ON/OFF Switch	
18	AMC8E21AM000	Potentiometer supplement	
19	AMC8P2201000	Spring	
20	AMC8PZ1AM000	Cord reel unit	Applied to UK and Ireland
21	AMC8P88AM000	Cord reel unit	Applied to Switzerland
22	AMC8PZ3AM000	Cord reel unit	Applied to Australia, New Zealand
23	AMC8P97AM000	Cord reel unit	Applied to East & West European countries, except the above.
24	AMC8P90Y1000	Cord reel	
25	AMC8P93W5000	Rail base unit	
26	AMC8EZ1AM000	Main supply cord	Applied to UK and Ireland
27	AMC8E98AM000	Main supply cord	Applied to Switzerland
28	AMC8EZ3AM000	Main supply cord	Applied to Australia, New Zealand
29	AMC8E97AM000	Main supply cord	Applied to East & West European countries, except the above.
30	AMC8P01AM000	Cord reel support	
31	AMC8P99AM000	Contact spring unit	
32	XTN4+16K	Tapping screw	
33	AMC8P96AM000	Brake lever unit	
34	AMC8P2201000	Spring	
35	AMC8C01AM0E2	Upper body	MC-E8011 / Green colour
	AMC8C01AM061	Upper body	MC-E8013 / Black colour
	AMC8CZ2AM0P6	Upper body	MC-E8015 / Metallic blue colour
36	AMC8T11AM0E2	Frontal cover	MC-E8011 / Green colour
	AMC8T11AM061	Frontal cover	MC-E8013 / Black colour
	AMC8TZ6AM0P6	Frontal cover	MC-E8015 / Metallic blue colour
37	XTN4+18B	Tapping screw	
38	AMC8F18AM000	Central filter support	
39	AMC8T21AM000	Supplement filter support	
40	AMC8F03AM000	Central filter	
41	AMC8I07L1100	Valve	
42	AMC8I09AR000	Valve spring	
43	AMC8I22P1064	Valve support	
44	AMC8TZ9AM061	Switch pedal	MC-E8011
	AMC8TZ9AM0G2	Switch pedal	MC-E8013 / MC-E8015

4 PARTS LIST (BODY UNIT)

Ref.:No.	Part No.	Part name & Description	Remarks
45	AMC8T13AM061	Cord reel pedal	MC-E8011
	AMC8T13AM0G2	Cord reel pedal	MC-E8013 / MC-E8015
46	AMC8P2201000	Spring	
47	AMC8CZ3AR061	Upper body cover	MC-E8011 / Black colour
	AMC8CZ3AT0P4	Upper body cover	MC-E8013 / Metallic silver
	AMC8CZ3AV0P4	Upper body cover	MC-E8015 / Metallic silver
48	AMC8T57AM061	Handle	MC-E8011 / Black colour
	AMC8TZ8AM0P4	Handle	MC-E8013 / MC-E8015 / Metallic silver
49	XTN4+18B	Tapping screw	
50	AMC8F28AA000	Clean air filter (electrostatic)	MC-E8011
51	AMC8F18R8000	Clean air filter support	MC-E8011
52	AMC8S04W5000	Clean air filter HEPA (Type F-2H)	MC-E8013 / MC-E8015
53	AMC8T07AM0E2	Exhaust cover	MC-E8011 / Green colour
	AMC8T07AM061	Exhaust cover	MC-E8013 / Black colour
	AMC8TY0AM0P6	Exhaust cover	MC-E8015 / Metallic blue
54	AMC8TZ0AR061	Dust compartment ass'y	MC-E8011
	AMC8TZ0AT0P4	Dust compartment ass'y	MC-E8013
	AMC8TZ0AV0P4	Dust compartment ass'y	MC-E8015
55	AMC8TZ5AR002	Dust compartment	MC-E8011
	AMC8TZ5AT001	Dust compartment	MC-E8013
	AMC8TZ5AT007	Dust compartment	MC-E8015
56	AMC8C20AM061	Dust compartment door	
57	AMC8TZ1AM061	Dust compartment cover kit	MC-E8011
	AMC8TZ1AM0P4	Dust compartment cover kit	MC-E8013/ MC-E8015
58	AMC8T82AM061	Dust compartment cover unit	MC-E8011
	AMC8T82AM0P4	Dust compartment cover unit	MC-E8013/ MC-E8015
59	AMC8FZ2AM070	Pre-filter unit	
60	AMC8S86AA000	Dust compartment filter kit	
61	AMC8F39AA000	Main filter A	
62	AMC8T81AA037	Main filter B	

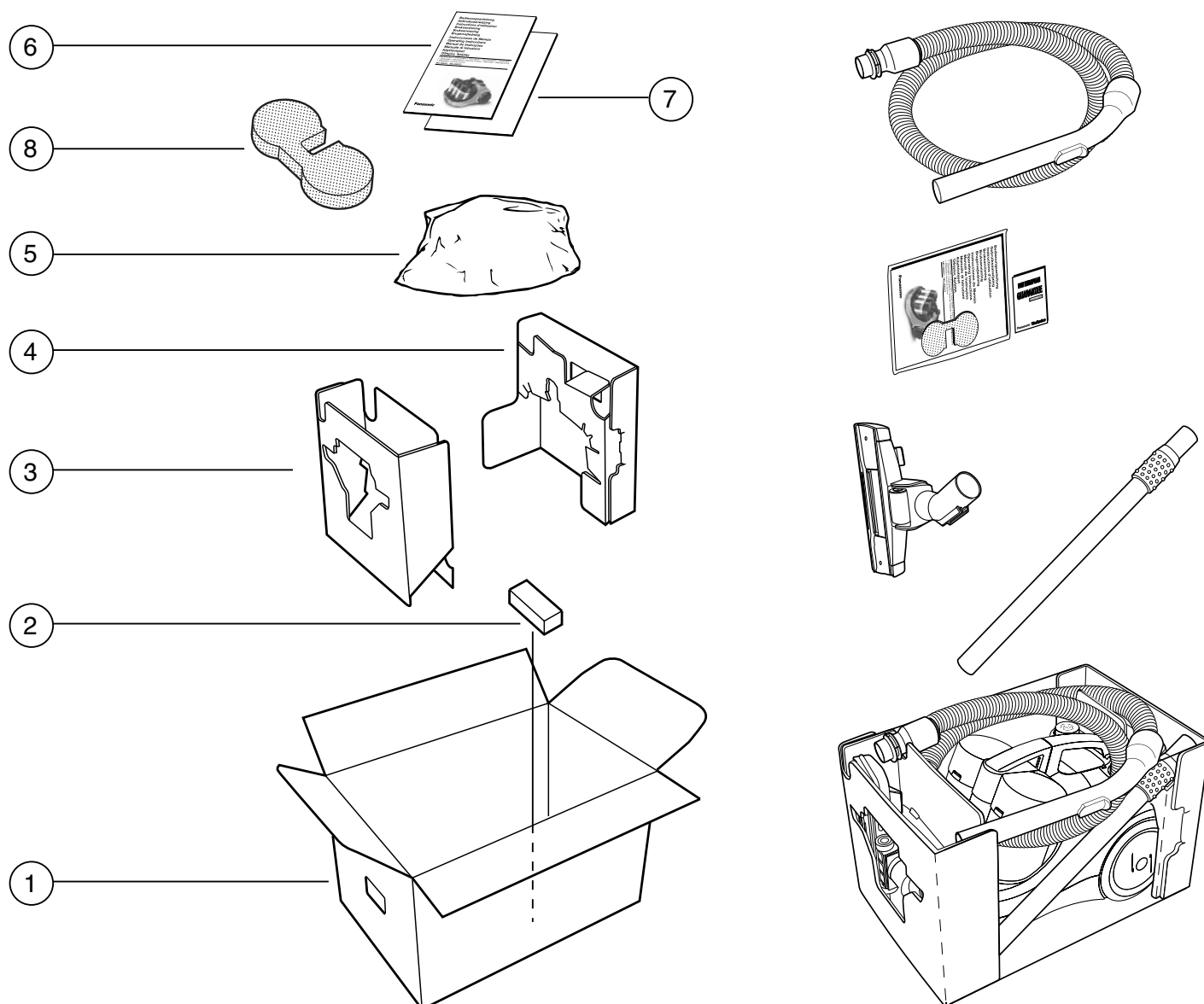
5 EXPLODED VIEW (ATTACHMENTS)



6 PARTS LIST (ATTACHMENTS)

Ref.:No.	Part No.	Part name & Description	Remarks
1	AMC8A92AM034	Hose ass'y	
2	AMC8A01AM034	Hose	
3	AMC8A94Y1034	Curved tube ass'y	
4	AMC8A1125034	Hose holder	
5	AMC8A0281034	Connection pipe	
6	AMC8A85AM000	Telescopic wand	
7	AMC8A99AM034	Floor nozzle RD-262	MC-E8011 / MC-E8015
8	AMC8A90AM034	Floor nozzle cover	MC-E8011 / MC-E8015
9	AMC8A89D1000	Floor nozzle brush	MC-E8011 / MC-E8015
10	AMC8A36D1000	Floor nozzle spring	MC-E8011 / MC-E8015
11	AMC8A39AM000	Floor nozzle base plate	MC-E8011 / MC-E8015
12	XTN35+25BFY	Tapping screw	MC-E8011 / MC-E8015
13	XTN35+14BFY	Tapping screw	MC-E8011 / MC-E8015
14	AMC8A41D1000	Linen retake	MC-E8011 / MC-E8015
15	AMC8A99AN034	Floor nozzle RD-270	MC-E8013
16	AMC8AY0AQ034	Parquet floor nozzle D-300	MC-E8015

7 PACKING INSTRUCTIONS



8 PACKING LIST

Ref.:No.	Part No.	Part name & Description	Remarks
1	AMC8Z01AR000	Carton box	MC-E8011
	AMC8Z01AT000	Carton box	MC-E8013
	AMC8Z01AV000	Carton box	MC-E8015
2	AMC8Z09J2000	Cushion supplement	
3	AMC8Z02AM000	Cushion A	
4	AMC8Z03AM000	Cushion B	
5	AMC8Z05Y1000	Set cover	
6	AMC8Z07AR070	Operating instructions	Language: German, Dutch, French, Swedish, Norwegian, Danish, Spanish, English, Portuguese, Italian, Finish and Greek.
	AMC8Z07AR110	Operating instructions	Language: Russian, Polish, Czech, Romanian, Hungarian, Bulgarian and Ukrainian.
	AMC8Z07AR090	Operating instructions	Language: English UK version
7	AMC8Z62AM070	Main filter sheet	Language: German, Dutch, French, Swedish, Norwegian, Danish, Spanish, English, Portuguese, Italian, Finish and Greek.
	AMC8Z62AM010	Main filter sheet	Language: Russian, Polish, Czech, Romanian, Hungarian, Bulgarian and Ukrainian.
	AMC8Z62AM090	Main filter sheet	Language: English
8	AMC8F39AA000	Main filter A	