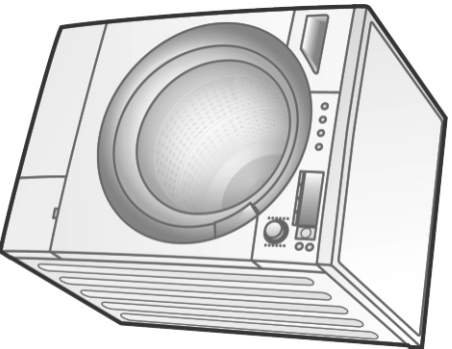


Service Manual

Drum Type Washing Machine



NA-168VX2 NA-128VA2
NA-168VG2 NA-147VB2
NA-148VA2

Product Colour :White

Destination :Germany, United Kingdom, France, Spain,
 Italy, Holland, Belgium, Sweden, Norway, Denmark,
 Poland, Czech, Hungary, Romania

⚠ WARNING

This service information is designed for experienced repair technicians only and is not designed for use by the general public. It does not contain warnings or cautions to advise non-technical individuals of potential dangers in attempting to service a product. Products powered by electricity should be serviced or repaired only by experienced professional technicians. Any attempt to service or repair the product or products dealt with in this service information by anyone else could result in serious injury or death.

IMPORTANT SAFETY NOTICE

There are special components used in this equipment which are important for safety. These parts are marked by ⚠ in the Schematic Diagrams, Circuit Board Diagrams, Exploded Views and Replacement Parts List. It is essential that these critical parts should be replaced with manufacturer's specified parts to prevent shock, fire or other hazards. Do not modify the original design without permission of manufacturer.

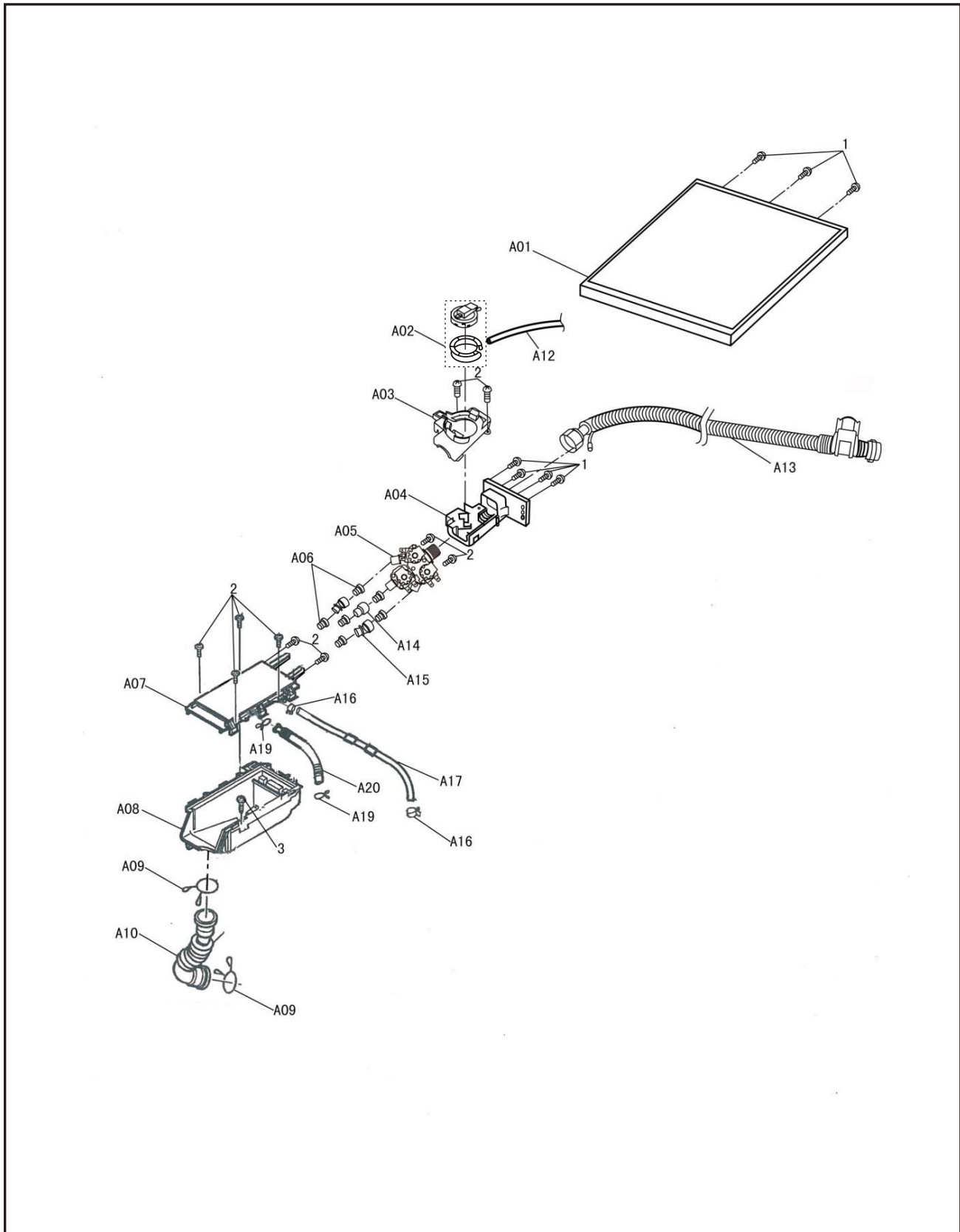
CONTENTS

	Page		Page
1 SPECIFICATIONS	2	9 WIRING DIAGRAM	19
2 PRODUCT INFORMATION	3-8	10 CHECK INPUT AND OUTPUT VOLTAGE OF THE P.C.BOARD	20-21
3 KNOW THE WASHING MACHINE	9	11 TROUBLESHOOTING GUIDE	22-23
4 MOVING AND INSTALLING	10-14	12 OPERATING TEST-NO WATER	24-25
5 HOW TO ADD DETERGENT AND SOFTENER	15	13 ERROR DISPLAY	26-27
6 MAINTENANCE	16	14 DISASSEMBLY INSTRUCTIONS AND ADJUSTMENTS ...	28-38
7 USING THE BUTTONS	17	15 LOCATION OF PARTS	39-48
8 DETAILS OF PROGRAMMES	18		

1 SPECIFICATIONS

Model No.	NA-168VX2	NA-168VG2	NA-148VA2	NA-128VA2	NA-147VB2
Power source	AC220V-240V/50Hz	AC220V-240V/50Hz	AC220V-240V/50Hz	AC220V-240V/50Hz	AC220V-240V/50Hz
Product weight	85kg	85kg	85kg	85kg	85kg
Dimensions(W*D*H)(mm)	596*625*845	596*625*845	596*625*845	596*625*845	596*625*845
Laundry capacity	8.0kg	8.0kg	8.0kg	8.0kg	7.0kg
Body Colour	White	White	White	White	White
Operation Panel	Dial+LCD	Dial+LED	Dial+LED	Dial+LED	Dial+LED
Drum(Wash) r/min .(Rated load)	37 ~ 53 r/min.	37 ~ 53 r/min.	37 ~ 53 r/min.	37 ~ 53 r/min.	37 ~ 53 r/min.
Spin r/min. (Rated load)	Max: 1600rpm.	Max: 1600rpm.	Max: 1400rpm.	Max: 1200rpm.	Max: 1400rpm.
Washing Performance	Variable Rotation Control	●	●	●	●
	Wide Angle Water Supply Shower	●	●	●	●
Process & Cloth load Indicator	●	-	-	-	-
Washing Program	12	12	12	12	12
Energy Consumption	Below 1.19kWh	Below 1.19kWh	Below 1.19kWh	Below 1.19kWh	Below 1.19kWh
Noise level	Super quiet by Inverter-Controlled brushless Motor	Super quiet by Inverter-Controlled brushless Motor	Super quiet by Inverter-Controlled brushless Motor	Super quiet by Inverter-Controlled brushless Motor	Super quiet by Inverter-Controlled brushless Motor
Easy to take-out laundry	Tilted 10° Drum	Tilted 10° Drum	Tilted 10° Drum	Tilted 10° Drum	Tilted 10° Drum
Lid Open	One Push Button	One Push Button	One Push Button	One Push Button	One Push Button
Maximum power consumption	2075W-2350W	2075W-2350W	2075W-2350W	2075W-2350W	2075W-2250W
Heating power consumption	2000W/230V	2000W/230V	2000W/230V	2000W/230V	2000W/230V
Pressure of tap water	0.03-1Mpa	0.03-1Mpa	0.03-1Mpa	0.03-1Mpa	0.03-1Mpa
Course select	Cotton、Cotton-Eco、Quick60、Rapid 15、Ease-care、Wool/Silk、15℃Wash、Memory、Sportswear、Shirts、Bedding、Colours	Cotton、Cotton-Eco、Quick60、Rapid 15、Ease-care、Wool/Silk、15℃Wash、Memory、Sportswear、Shirts、Bedding、Colours	Cotton、Cotton-Eco、Quick60、Rapid 15、Ease-care、Wool/Silk、15℃Wash、Sportswear、Shirts、Baby-care、Bedding、Colours	Cotton、Cotton-Eco、Quick60、Rapid 15、Ease-care、Wool/Silk、15℃Wash、Sportswear、Shirts、Baby-care、Bedding、Colours	Cotton、Cotton-Eco、Quick60、Rapid 15、Ease-care、Wool/Silk、Delicates、Shirts、Bedding、Colours、Quiet、Tub clean
Temperature	Cold、30℃、40℃、50℃、60℃、70℃、80℃、90℃	Cold、30℃、40℃、60℃、90℃	Cold、30℃、40℃、60℃、90℃	Cold、30℃、40℃、60℃、90℃	Cold、30℃、40℃、60℃、90℃
Buzzer	Cycle-end buzzer, Beeper alarm	Cycle-end buzzer, Beeper alarm	Cycle-end buzzer, Beeper alarm	Cycle-end buzzer, Beeper alarm	Cycle-end buzzer, Beeper alarm
Error display	U appears: 5 items H appears: 18 items	U appears: 5 items H appears: 18 items	U appears: 5 items H appears: 18 items	U appears: 5 items H appears: 18 items	U appears: 5 items H appears: 18 items
Accessories	Cover cap、Spanner、Elbow	Cover cap、Spanner、Elbow	Cover cap、Spanner、Elbow	Cover cap、Spanner、Elbow	Cover cap、Spanner、Elbow

15 LOCATION OF PARTS-A



REPLACEMENT PARTS LIST-A

(U):U indicates parts at the remarks that can be replaced by user.

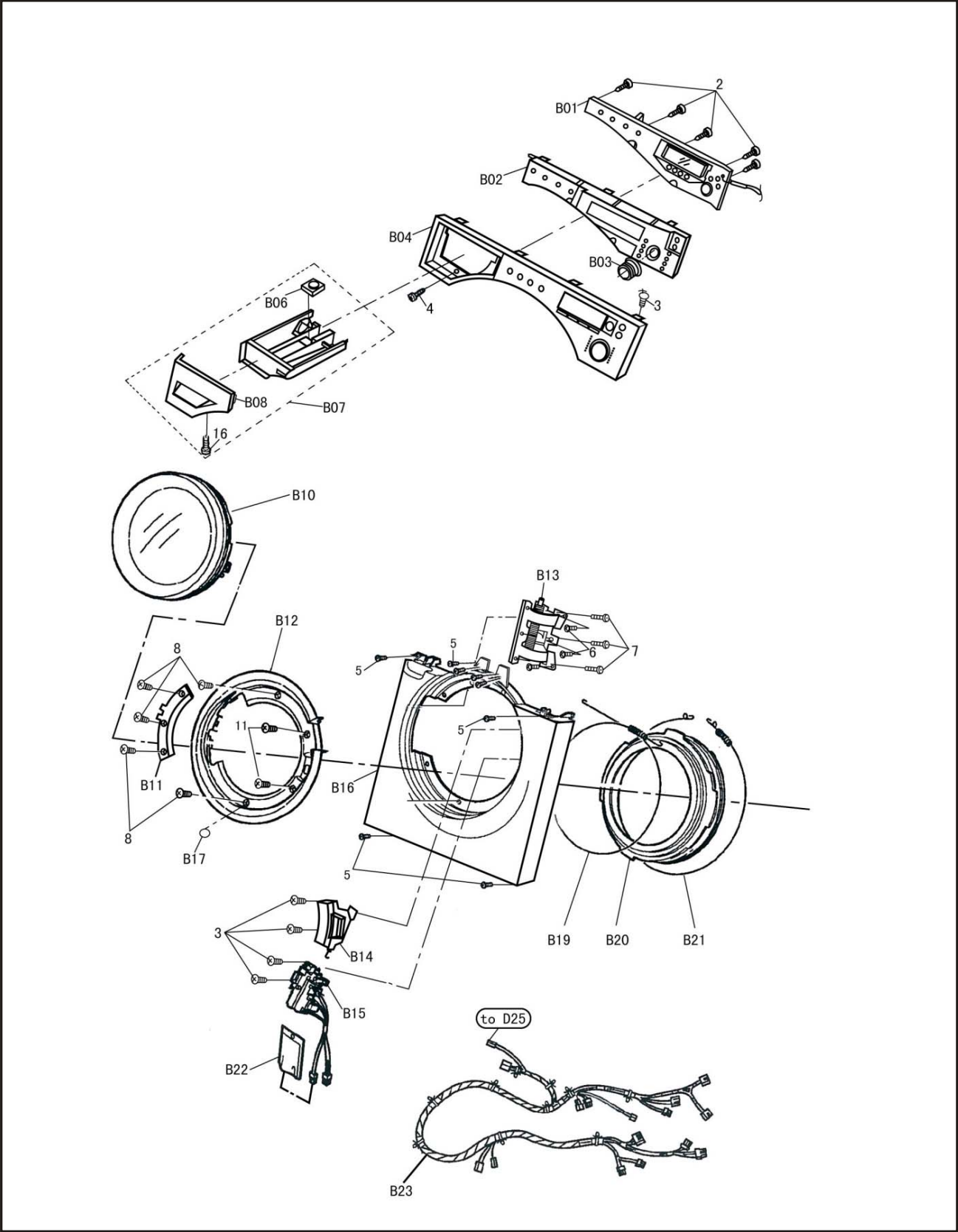
△:Components identified by △ Mark have special characteristics important for safety.

When replacing any of these components use only manufacture's specified parts.

☐:Indicates parts that are supplied by PPSC/Japan.

Ref. No.	Part No.	Description	Q'ty	168VX2	168VG2	148VA2	128VA2	147VB2	Remarks
A01	AXW11NB7FH0	TOP BOARD	1	○	○	○	○	○	(U)
A02	AXW24T-0360	WATER LEVEL DETECTOR	1	○	○	○	○	○	△
A03	AXW1278-7FH0	DETERGENT CASE C	1	○	○	○	○	○	Germany
	AXW1278-7FH0	DETERGENT CASE C	1	○	×	×	×	×	UK/Holand/Belgium/Sweden/Norway/Danmark
	AXW1278-7FH0	DETERGENT CASE C	1	-	○	×	×	×	France
	AXW1278-7FH0	DETERGENT CASE C	1	○	-	×	×	×	Spain
	AXW1278-7FH0	DETERGENT CASE C	1	○	-	×	×	×	Italy
	AXW1278-7FH0	DETERGENT CASE C	1	○	×	×	×	×	Poland/Czech/Hungary/Romania
	AXW1278-7GY0	DETERGENT CASE C	1	×	○	○	○	○	UK/Holand/Belgium/Sweden/Norway/Danmark
	AXW1278-7GY0	DETERGENT CASE C	1	-	×	○	○	○	France
	AXW1278-7GY0	DETERGENT CASE C	1	×	-	○	○	○	Spain
	AXW1278-7GY0	DETERGENT CASE C	1	×	-	○	○	○	Italy
	AXW1278-7GY0	DETERGENT CASE C	1	×	○	○	○	○	Poland/Czech/Hungary/Romania
A04	AXW2901-7FH0	FEED VALVE CASE	1	○	○	○	○	○	Germany
	AXW2901-7FH0	FEED VALVE CASE	1	○	×	×	×	×	UK/Holand/Belgium/Sweden/Norway/Danmark
	AXW2901-7FH0	FEED VALVE CASE	1	-	○	×	×	×	France
	AXW2901-7FH0	FEED VALVE CASE	1	○	-	×	×	×	Spain/Italy
	AXW2901-7FH0	FEED VALVE CASE	1	○	×	×	×	×	Poland/Czech/Hungary/Romania
	AXW2901-7GY0	FEED VALVE CASE	1	×	○	○	○	○	UK/Holand/Belgium/Sweden/Norway/Danmark
	AXW2901-7GY0	FEED VALVE CASE	1	-	×	○	○	○	France
	AXW2901-7GY0	FEED VALVE CASE	1	×	-	○	○	○	Spain/Italy
	AXW2901-7GY0	FEED VALVE CASE	1	×	○	○	○	○	Poland/Czech/Hungary/Romania
A05	AXW29A-22006	FEED VALVE	1	○	○	○	○	○	△
A06	AXW2164-6JU0	DETERGENT CASE PACKING	6	○	○	○	○	○	
A07	AXW8E-7FH0	NOZZLE UNIT	1	○	○	○	○	○	
A08	AXW2150-7FH0	DETERGENT CASE A	1	○	○	○	○	○	
A09	AXW245-6TB0	HOSE CLAMP	2	○	○	○	○	○	
A10	AXW1250-7FH0	FEED HOSE	1	○	○	○	○	○	
A12	AXW2Q-7FH0	AIR HOSE A UNIT	1	○	○	○	○	○	
A13	AXW12C-7FH0	WATER SUPPLY HOSE	1	○	○	○	○	○	△ Germany
	AXW12C-7FH0	WATER SUPPLY HOSE	1	○	×	×	×	×	△ UK/Holand/Belgium/Sweden/Norway/Danmark
	AXW12C-7FH0	WATER SUPPLY HOSE	1	-	○	×	×	×	△ France
	AXW12C-7FH0	WATER SUPPLY HOSE	1	○	-	×	×	×	△ Spain
	AXW12C-7FH0	WATER SUPPLY HOSE	1	○	-	×	×	×	△ Italy
	AXW12C-7FH0	WATER SUPPLY HOSE	1	○	×	×	×	×	△ Poland/Czech/Hungary/Romania
	AXW12C-7GY0	WATER SUPPLY HOSE	1	×	○	○	○	○	UK/Holand/Belgium/Sweden/Norway/Danmark
	AXW12C-7GY0	WATER SUPPLY HOSE	1	-	×	○	○	○	France
	AXW12C-7GY0	WATER SUPPLY HOSE	1	×	-	○	○	○	Spain/Italy
	AXW12C-7GY0	WATER SUPPLY HOSE	1	×	○	○	○	○	Poland/Czech/Hungary/Romania
A14	AXW229-6YK0	HOSE JOINT	1	○	○	○	○	○	
A15	AXW229-7FH0	HOSE JOINT	2	○	○	○	○	○	
A16	AXW264-6YK0	HOSE CLAMP	2	○	○	○	○	○	
A17	AXW2P-7FH0	SUCTION HOSE B UNIT	1	○	○	○	○	○	
A19	AXW264-6WJ0	HOSE CLAMP	2	○	○	○	○	○	
A20	AXW237-7FH0	SUCTION HOSE A	1	○	○	○	○	○	

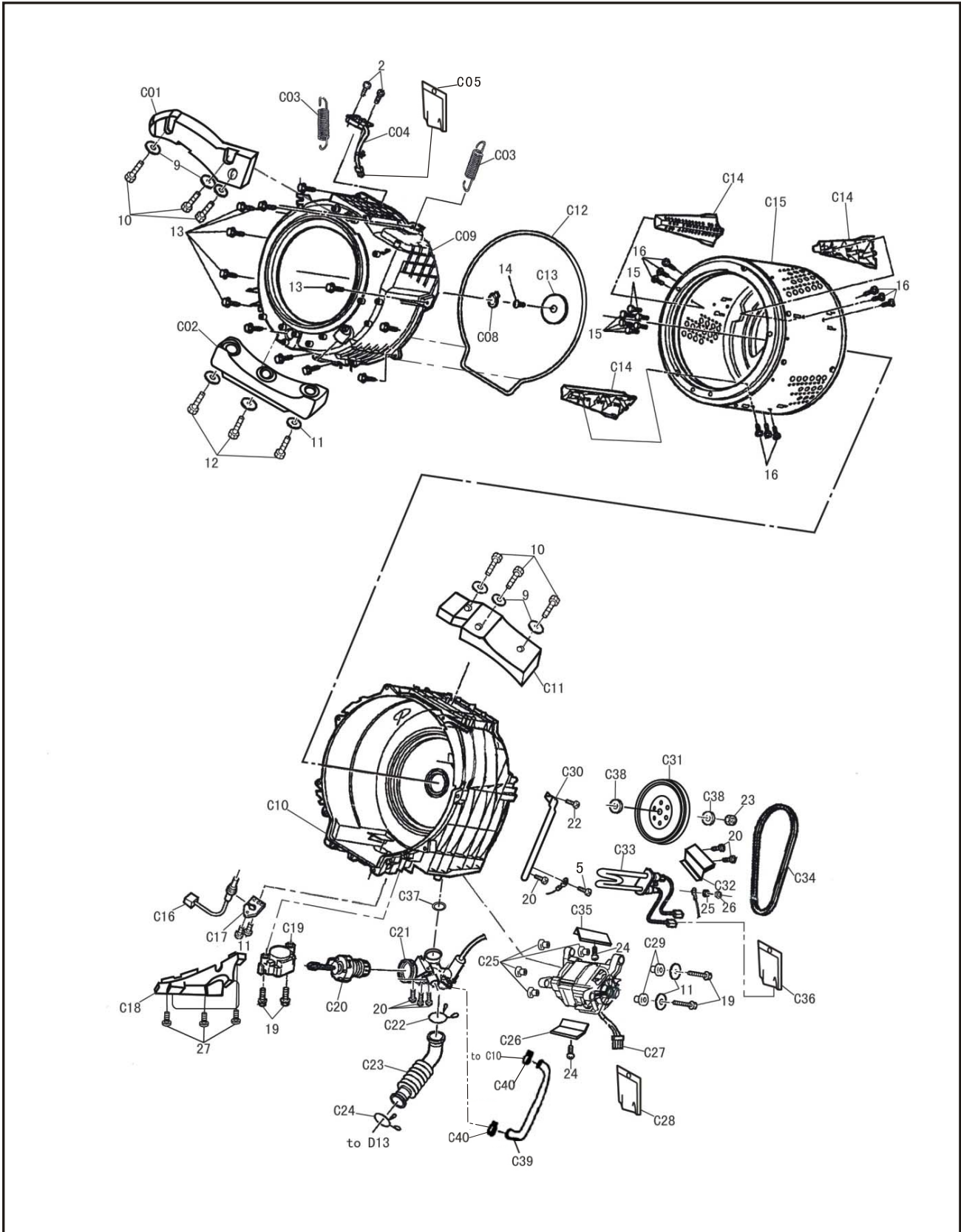
LOCATION OF PARTS-B



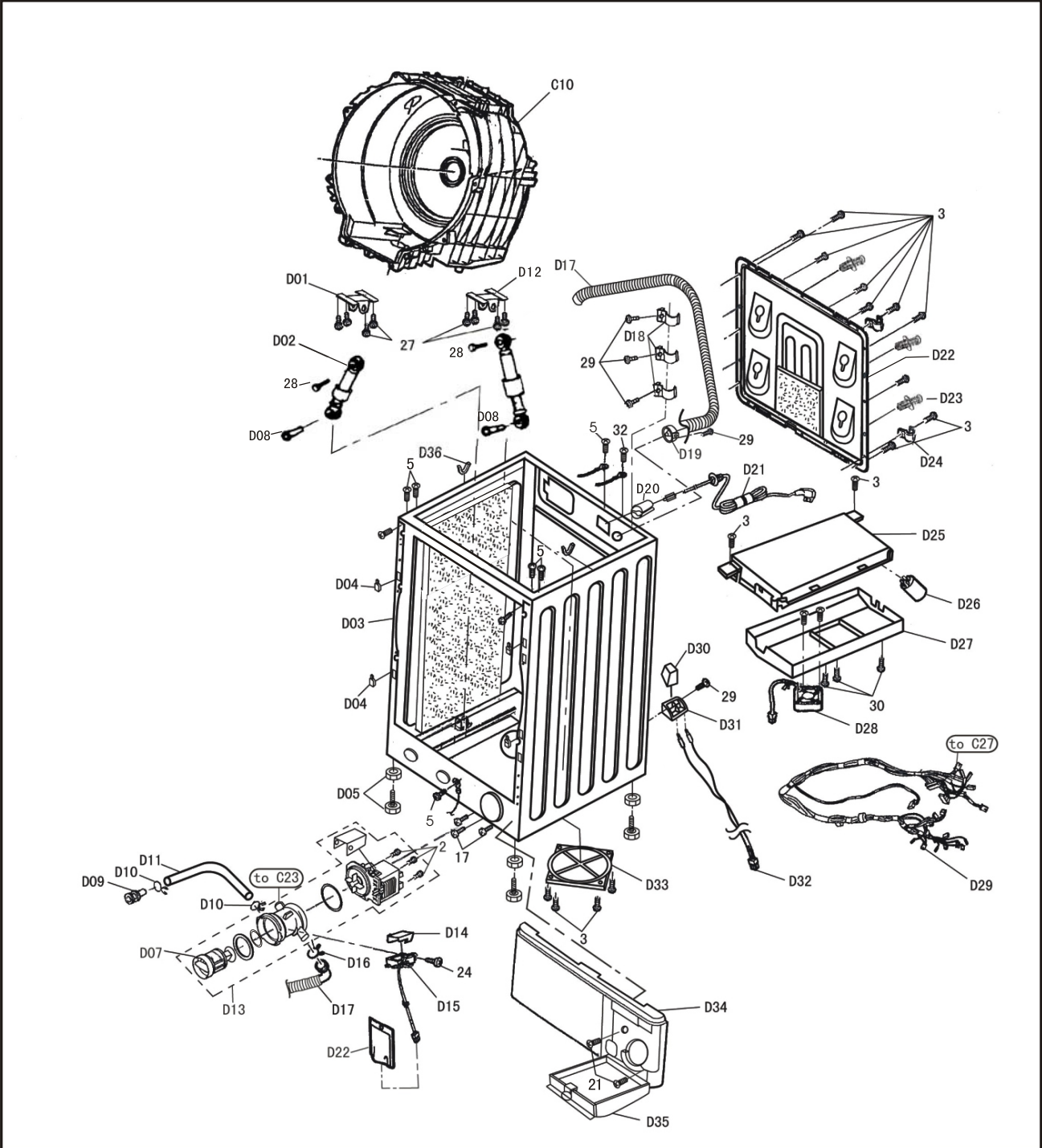
REPLACEMENT PARTS LIST-B

Ref. No.	Part No.	Description	Q'ty	168VX2	168VG2	148VA2	128VA2	147VB2	Remarks
B01	AXW24S-7MJ06	CONTROLLER UNIT A	1	○	×	×	×	×	
	AXW24S-7MK06	CONTROLLER UNIT A	1	×	○	○	○	○	
B02	AXW146-7FH0	CONTROLLER PLATE	1	○	×	×	×	×	
	AXW146-7FJ0	CONTROLLER PLATE	1	×	○	×	×	×	
	AXW146-7FK0	CONTROLLER PLATE	1	×	×	○	×	○	
B03	AXW146-7MM0	CONTROLLER PLATE	1	×	×	×	○	×	
	AXW149A7FH0	COURSE SELECT KNOB	1	○	○	×	×	×	
	AXW149B7FH0	COURSE SELECT KNOB	1	×	×	○	○	○	
B04	AXW1J-7MJ0	PANEL FACE BOARD UNIT	1	○	×	×	×	×	Germany
	AXW1J-7MK0	PANEL FACE BOARD UNIT	1	×	○	×	×	×	Germany
	AXW1J-7ML0	PANEL FACE BOARD UNIT	1	×	×	○	×	×	Germany
	AXW1J-7MM0	PANEL FACE BOARD UNIT	1	×	×	×	○	×	Germany
	AXW1J-7MN0	PANEL FACE BOARD UNIT	1	×	×	×	×	○	Germany
	AXW1J-7MP0	PANEL FACE BOARD UNIT	1	○	×	×	×	×	UK/Holand/Belgium/Sweden/Norway/Danmark/Poland/Czech/Hungary/Romania
	AXW1J-7MR0	PANEL FACE BOARD UNIT	1	×	○	×	×	×	UK/Holand/Belgium/Sweden/Norway/Danmark/Poland/Czech/Hungary/Romania
	AXW1J-7MS0	PANEL FACE BOARD UNIT	1	×	×	○	×	×	UK/Holand/Belgium/Sweden/Norway/Danmark/Poland/Czech/Hungary/Romania
	AXW1J-7MT0	PANEL FACE BOARD UNIT	1	×	×	×	○	×	UK/Holand/Belgium/Sweden/Norway/Danmark/Poland/Czech/Hungary/Romania
	AXW1J-7MU0	PANEL FACE BOARD UNIT	1	×	×	×	×	○	UK/Holand/Belgium/Sweden/Norway/Danmark
	AXW1J-7MW0	PANEL FACE BOARD UNIT	1	-	○	×	×	×	France
	AXW1J-7RH0	PANEL FACE BOARD UNIT	1	-	×	○	×	×	France
	AXW1J-7MX0	PANEL FACE BOARD UNIT	1	-	×	×	○	×	France
	AXW1J-7MY0	PANEL FACE BOARD UNIT	1	-	×	×	×	○	France
	AXW1J-7MZ0	PANEL FACE BOARD UNIT	1	○	-	×	×	×	Spain
	AXW1J-7NA0	PANEL FACE BOARD UNIT	1	×	-	○	×	×	Spain
	AXW1J-7NB0	PANEL FACE BOARD UNIT	1	×	-	×	○	×	Spain
	AXW1J-7NC0	PANEL FACE BOARD UNIT	1	×	-	×	×	○	Spain
	AXW1J-7ND0	PANEL FACE BOARD UNIT	1	○	-	×	×	×	Italy
	AXW1J-7NE0	PANEL FACE BOARD UNIT	1	×	-	○	×	×	Italy
AXW1J-7NF0	PANEL FACE BOARD UNIT	1	×	-	×	○	×	Italy	
AXW1J-7RJ0	PANEL FACE BOARD UNIT	1	×	-	×	×	○	Italy	
B06	AXW2177A7FH1	SOFTENER CASE CAP	1	○	○	○	○	○	(U)
B07	AXW21D-7MJ0	RINSE CASE UNIT	1	○	×	×	×	×	(U)
	AXW21D-7MK0	RINSE CASE UNIT	1	×	○	×	×	×	(U)
	AXW21D-7ML0	RINSE CASE UNIT	1	×	×	○	×	×	(U)
	AXW21D-7MM0	RINSE CASE UNIT	1	×	×	×	○	×	(U)
	AXW21D-7MN0	RINSE CASE UNIT	1	×	×	×	×	○	(U)
B08	AXW147B7MJ0	PANEL FACE C	1	○	×	×	×	×	(U)
	AXW147B7MK0	PANEL FACE C	1	×	○	×	×	×	(U)
	AXW147B7ML0	PANEL FACE C	1	×	×	○	×	×	(U)
	AXW147B7MM0	PANEL FACE C	1	×	×	×	○	×	(U)
	AXW147B7MN0	PANEL FACE C	1	×	×	×	×	○	(U)
B10	AXW1GH7FH0	DOOR UNIT	1	○	○	○	○	○	(U)
B11	AXW173G7FH0	BODY BAND PLATE	1	○	×	×	×	×	(U)Grey
	AXW173C7FH0	BODY BAND PLATE	1	×	○	○	×	×	(U)Silver
	AXW173B7FH0	BODY BAND PLATE	1	×	×	×	○	○	(U)White
B12	AXW171G7FH0	BODY BAND A	1	○	×	×	×	×	(U)Grey
	AXW171C7FH0	BODY BAND A	1	×	○	○	×	×	(U)Silver
	AXW171B7FH0	BODY BAND A	1	×	×	×	○	○	(U)White
B13	AXW11D-7FH0	DOOR HINGE	1	○	○	○	○	○	
B14	AXW7CG7FH0	DOOR BUTTON	1	○	×	×	×	×	Grey
	AXW7CC7FH0	DOOR BUTTON	1	×	○	○	×	×	Silver
	AXW7CB7FH0	DOOR BUTTON	1	×	×	×	○	○	White
B15	AXW1619-1106	DOOR LOCK SWITCH	1	○	○	○	○	○	△
B16	AXW1BB7FH0	BODY B UNIT	1	○	○	○	○	○	
B17	AXW163N6YK0	HOLE COVER	7	○	×	×	×	×	(U)Grey
	AXW163M6YK0	HOLE COVER	7	×	○	○	×	×	(U)Silver
	AXW163B6YK0	HOLE COVER	7	×	×	×	○	○	(U)White
B19	AXW172-6UN1	BODY BAND B	1	○	○	○	○	○	
B20	AXW212-7EU0	WRINGER FRAME PACKING	1	○	○	○	○	○	
B21	AXW172-6UN0	BODY BAND B	1	○	○	○	○	○	
B22	AXW448-7KU0	CHEMIAL COVER	1	○	○	○	○	○	
B23	AXW14A-7FH0	LEAD WIRE UNIT	1	○	○	○	○	○	△Upper side

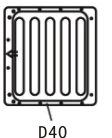
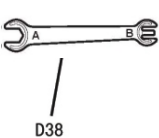
LOCATION OF PARTS-C



LOCATION OF PARTS-D



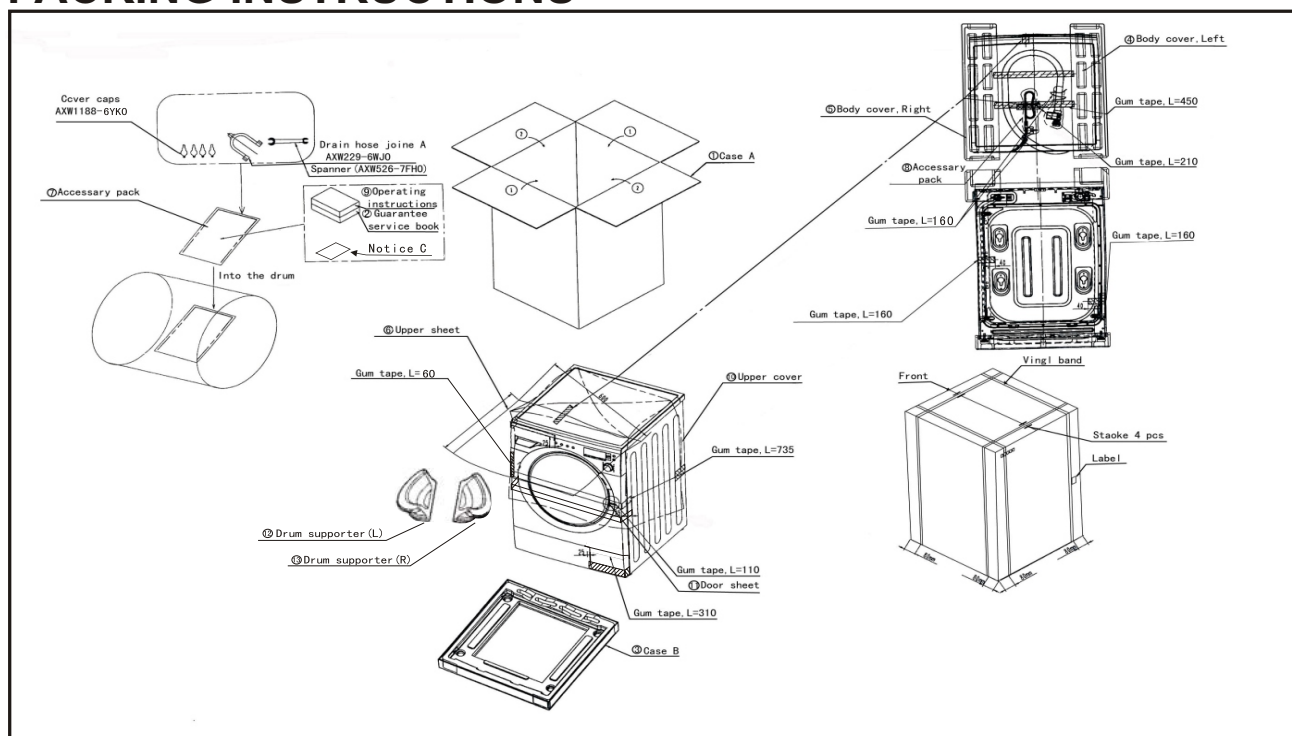
Accessories



REPLACEMENT PARTS LIST-D

Ref. No.	Part No.	Description	Q'ty	168VX2	168VG2	148VA2	128VA2	147VB2	Remarks
D01	AXW1150-7FH0	TUB SUPPORT PLATE	1	○	○	○	○	○	
D02	AXW2331-7MJ0	DAMPER SPRING	2	○	○	○	○	×	
	AXW2331-6YK2	DAMPER SPRING	2	×	×	×	×	○	
D03	AXW1AB7FH0	BODY UNIT	1	○	○	○	○	○	Includes D05
D04	AXW135-7FH0	HOOK	4	○	○	○	○	○	
D05	AXW31-7EU0	LEG PLATE UNIT	4	○	○	○	○	○	(U)
D07	AXW2205A7FH0	DRAIN FILTER	1	○	○	○	○	○	(U) Includes Seal ring
D08	AXW334-6YK0	DAMPER HOLDER PIN	2	○	○	○	○	○	
D09	AXW260-6WJ0	SUB DRAIN PORT CAP	1	○	○	○	○	○	(U)
D10	AXW264-6WJ0	HOSE CLAMP	2	○	○	○	○	○	(U)
D11	AXW230-7FH0	DRAIN HOSE A	1	○	○	○	○	○	
D12	AXW1150-7FH1	TUB SUPPORT PLATE	1	○	○	○	○	○	
D13	AXW8R-7FH0	DRAINING PUMP UNIT	1	○	○	○	○	○	△ Includes D07
D14	AXW686-7EP0	WATERPROOF COVER	1	○	○	○	○	○	
D15	AXW26M-7FH0	FILTER VALVE LEAD SWITCH	1	○	○	○	○	○	△
D16	AXW245-6WJ4	HOSE CLAMP	1	○	○	○	○	○	
D17	AXW2EA7FH0	DRAINING HOSE UNIT	1	○	○	○	○	○	
D18	AXW120A7FH0	DRAIN HOSE HOLDER	3	○	○	○	○	○	(U)Inside
D19	AXW170A7FH0	DRAIN HOSE HOLDER	1	○	○	○	○	○	
D20	SFT-72SN	MAGNET RING	1	○	○	○	○	○	△
D21	AXW4A-7FH0	POWER CORD	1	○	○	○	○	○	△ Germany/France/Spain/Holand/ Belgium/Sweden/ Norway/Danmark/ Poland/Czech/Hungary/Romania
	AXW4A-7GX0	POWER CORD	1	○	○	○	○	○	△ UK
	AXW4A-7LA0	POWER CORD	1	○	○	○	○	○	△ Italy
D22	AXW156-7FH0	REAR PANEL	1	○	○	○	○	○	(U)
D23	AXW90E-7FH1	OUTER TUB HOLDER UNIT	4	○	○	○	○	○	(U)
D24	AXW120A7FH1	DRAIN HOSE HOLDER	3	○	○	○	○	○	(U)Outside
D25	AXW24C-7MJ06	PC BOARD W/COMPONENTS	1	○	×	×	×	×	△
	AXW24C-7MK06	PC BOARD W/COMPONENTS	1	×	○	×	×	×	△Germany/France
	AXW24C-7MR06	PC BOARD W/COMPONENTS	1	×	○	×	×	×	△ UK/Holand/Belgium/Sweden/ Norway/Danmark/Poland/Czech/ Hungary/Romania
	AXW24C-7ML06	PC BOARD W/COMPONENTS	1	×	×	○	×	×	△Germany
	AXW24C-7MS06	PC BOARD W/COMPONENTS	1	×	×	○	×	×	△ UK/Spain/Italy/Holand/Belgium/ Sweden/Norway/Danmark/Poland/ Czech/Hungary/Romania
	AXW24C-7MM06	PC BOARD W/COMPONENTS	1	×	×	×	○	×	△Germany
	AXW24C-7MT06	PC BOARD W/COMPONENTS	1	×	×	×	○	×	△ UK/France/Spain/Italy/Holand/ Belgium/Sweden/Norway/Danmark/ Poland/Czech/Hungary/Romania
	AXW24C-7FK06	PC BOARD W/COMPONENTS	1	×	×	×	×	○	△Germany
	AXW24C-7GZ06	PC BOARD W/COMPONENTS	1	×	×	×	×	○	△ UK/France/Spain/Holand/ Belgium/Sweden/Norway/Danmark
D26	AXW2430-0380	NOISE FILTER	1	○	○	○	○	○	△
D27	AXW542-7FH0	PC BOARD COVER C	1	○	○	○	○	○	
D28	L6FAKEDH0014	FAN UNIT	1	○	○	○	○	○	△
D29	AXW14B-7FH0	LEAD WIRE UNIT B	1	○	○	○	○	○	△ Lower side
D30	AXW621-7FH0	SWITCH PLATE A	1	○	○	○	○	○	
D31	AXW624-7FH0	SWITCH PLATE B	1	○	○	○	○	○	
D32	AXW14A-7FH1	WATER LEAK SENSOR	1	○	○	○	○	○	△
D33	AXW2159-7FH0	BOTTOM PLATE A	1	○	○	○	○	○	Includes Seal ring
D34	AXW130B7FH0	PANEL A	1	○	○	○	○	○	Includes Label
D35	AXW140B7FH0	PANEL B	1	○	○	○	○	○	(U)
D36	AXW3440-7FH0	SUSPENSION HOLDER	2	○	○	○	○	○	
D37	AXW1188-6UN0	COVER CAPS	4	○	○	○	○	○	(U)
D38	AXW526-7FH0	SPANNER	1	○	○	○	○	○	(U)
D39	AXW229-6WJ0	DRAIN HOSE JOINT A	1	○	○	○	○	○	(U)
D40	AXW4595-7FH0	METAL COVER(NOT PAINTED)	1	○	○	○	○	○	(U)
	AXW4595-7KG0	METAL COVER(WHITE)	1	○	○	○	○	○	(U)

PACKING INSTRUCTIONS



PACKING PARTS LIST

Ref. No.	Part No.	Description	Q'ty	168VX2	168VG2	148VA2	128VA2	147VB2	Remarks
1	AXW90E-7MJ1	CASE A	1	○	×	×	×	×	Germany/UK/Spain/Italy/Holand/Belgium/Sweden/Norway/Danmark/Poland/Czech/Hungary/Romania
	AXW90E-7MK1	CASE A	1	×	○	×	×	×	Germany/UK/France/Holand/Belgium/Sweden/Norway/Danmark/Poland/Czech/Hungary/Romania
	AXW90E-7ML1	CASE A	1	×	×	○	×	×	Germany/UK/France/Spain/Italy/Holand/Belgium/Sweden/Norway/Danmark/Poland/Czech/Hungary/Romania
	AXW90E-7MM1	CASE A	1	×	×	×	○	×	Germany/UK/France/Spain/Italy/Holand/Belgium/Sweden/Norway/Danmark/Poland/Czech/Hungary/Romania
	AXW90E-7MN1	CASE A	1	×	×	×	×	○	Germany/UK/France/Spain/Italy/Holand/Belgium/Sweden/Norway/Danmark/Poland/Czech/Hungary/Romania
2	AXW9923-7FH1	GUARANTEE SERVICE BOOK	1	○	○	○	○	○	
3	AXW90B-7FH0	CASE B	1	○	○	○	○	○	
4	AXW9004-7FH0	BODY COVER(L)	1	○	○	○	○	○	
5	AXW9004-7FH1	BODY COVER(R)	1	○	○	○	○	○	
6	AXW9069-7FH0	UPPER SHEET	1	○	○	○	○	○	
7	AXW9057-7FH3	ACCESSORY PACK	1	○	○	○	○	○	Operating instructions
8	AXW9057-7FH1	ACCESSORY PACK	3	○	○	○	○	○	Power cord
9	AXW4F-7MJ0	OPERATING INSTRUCTIONS	1	○	○	○	○	○	Germany
	AXW4F-7MP0	OPERATING INSTRUCTIONS	1	○	○	○	○	○	UK
	AXW4F-7MW0	OPERATING INSTRUCTIONS	1	○	○	○	○	○	France
	AXW4F-7MZ0	OPERATING INSTRUCTIONS	1	○	○	○	○	○	Spain
	AXW4F-7ND0	OPERATING INSTRUCTIONS	1	○	○	○	○	○	Italy
	AXW4F-7NG0	OPERATING INSTRUCTIONS	1	○	○	○	○	○	Holand/Belgium/Sweden/Norway/Danmark/Poland/Czech/Hungary/Romania
10	AXW9060-7FH0	UPPER COVER	1	○	○	○	○	○	
11	AXW9070-7BB0	DOOR SHEET	1	○	○	○	○	○	
12	AXW9054-7FH0	DRUM SUPPORTER	1	○	○	○	○	○	

