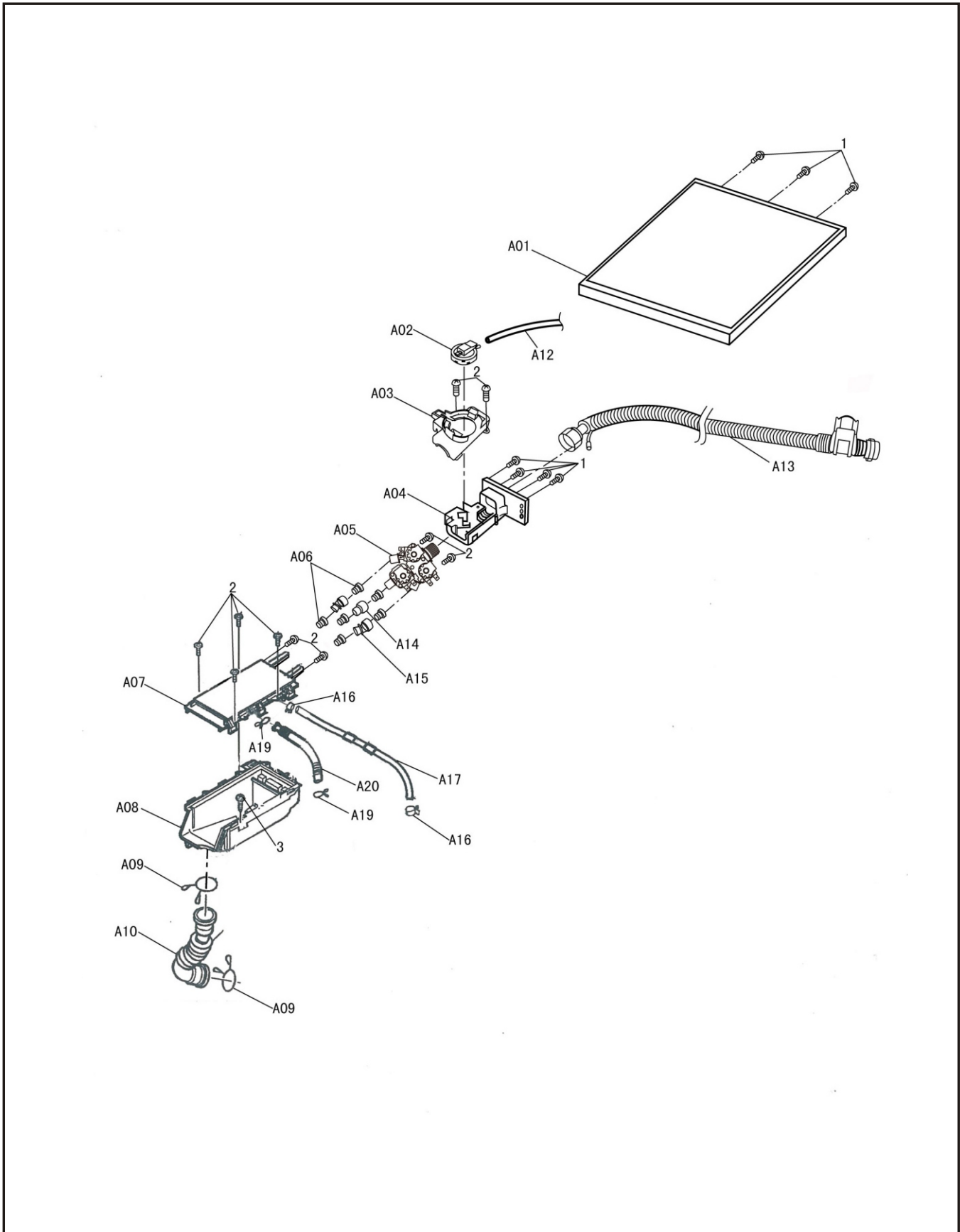


# 15 LOCATION OF PARTS-A



## REPLACEMENT PARTS LIST-A

(U):U indicates parts at the remarks that can be replaced by user.

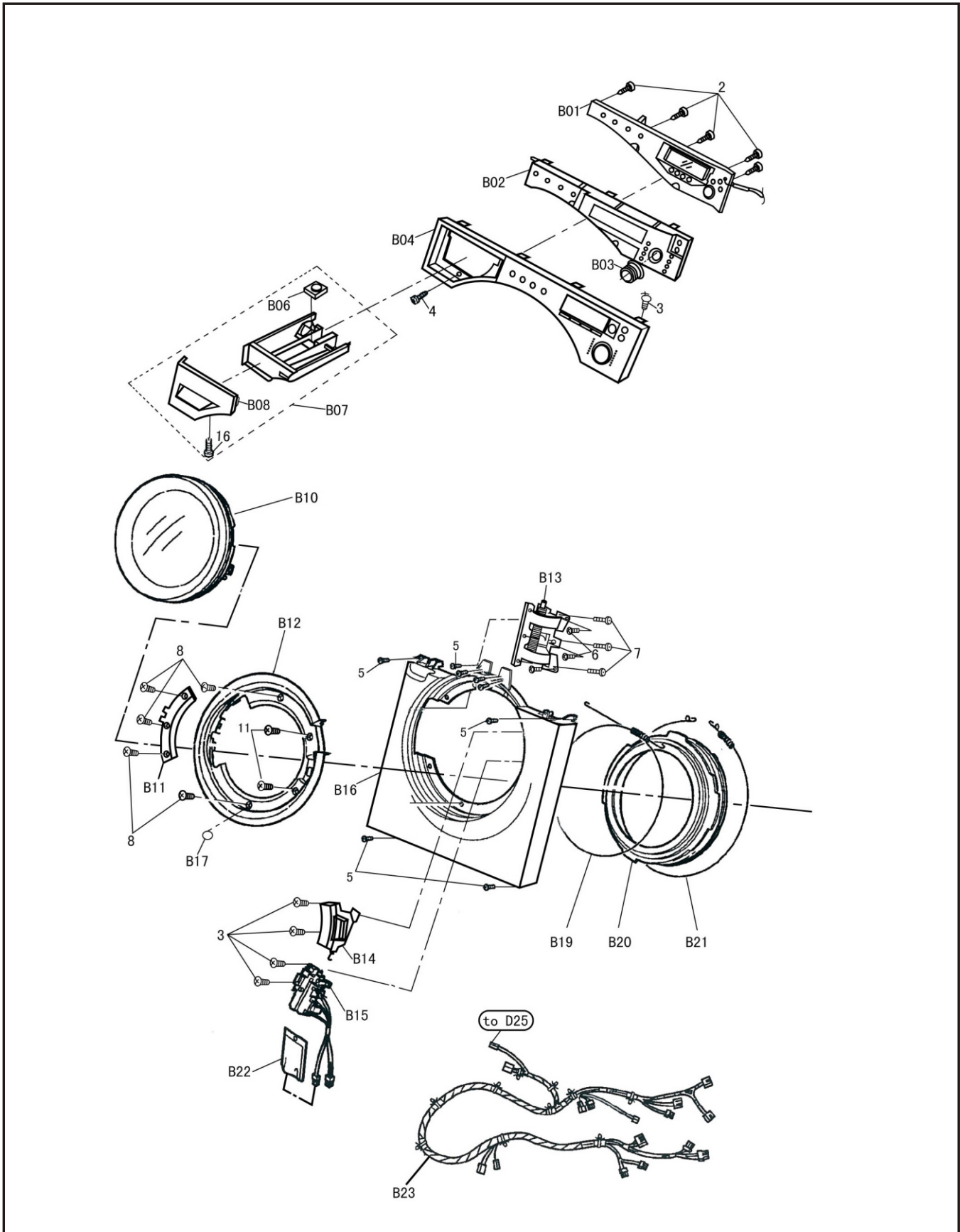
△:Components identified by △ Mark have special characteristics important for safety.

When replacing any of these components use only manufacture's specified parts.

□:Indicates parts that are supplied by PPSC/Japan.

Ref. No.	Part No.	Description	Q'ty	Model No.			Remarks
				16VX1	16VG1	14VA1	
A01	AXW11NB7FH0	TOP BOARD	1	○	○	○	(U)
A02	AXW24T-0300	WATER LEVEL DETECTOR	1	○	○	○	△
A03	AXW1278-7FH0	DETERGENT CASE C	1	○	○	○	Germany
	AXW1278-7FH0	DETERGENT CASE C	1	○	×	×	UK/Spain/Poland
	AXW1278-7FH0	DETERGENT CASE C	1	○	○	×	France
	AXW1278-7GY0	DETERGENT CASE C	1	×	○	○	UK/Spain/Poland
	AXW1278-7GY0	DETERGENT CASE C	1	×	×	○	France
A04	AXW2901-7FH0	FEED VALVE CASE	1	○	○	○	Germany
	AXW2901-7FH0	FEED VALVE CASE	1	○	×	×	UK/Spain/Poland
	AXW2901-7FH0	FEED VALVE CASE	1	○	○	×	France
	AXW2901-7GY0	FEED VALVE CASE	1	×	○	○	UK/Spain/Poland
	AXW2901-7GY0	FEED VALVE CASE	1	×	×	○	France
A05	AXW29A-22006	FEED VALVE	1	○	○	○	△
A06	AXW2164-6JU0	DETERGENT CASE PACKING	6	○	○	○	
A07	AXW8E-7FH0	NOZZLE UNIT	1	○	○	○	
A08	AXW2150-7FH0	DETERGENT CASE A	1	○	○	○	
A09	AXW245-6TB0	HOSE CLAMP	2	○	○	○	
A10	AXW1250-7FH0	FEED HOSE	1	○	○	○	
A12	AXW2Q-7FH0	AIR HOSE A UNIT	1	○	○	○	
A13	AXW12C-7FH0	WATER SUPPLY HOSE	1	○	○	○	△ Germany
	AXW12C-7FH0	WATER SUPPLY HOSE	1	○	×	×	△ UK/Spain/Poland
	AXW12C-7FH0	WATER SUPPLY HOSE	1	○	○	×	△ France
	AXW12C-7GY0	WATER SUPPLY HOSE	1	×	○	○	UK/Spain/Poland
	AXW12C-7GY0	WATER SUPPLY HOSE	1	×	×	○	France
A14	AXW229-6YK0	HOSE JOINT	1	○	○	○	
A15	AXW229-7FH0	HOSE JOINT	2	○	○	○	
A16	AXW264-6YK0	HOSE CLAMP	2	○	○	○	
A17	AXW2P-7FH0	SUCTION HOSE B UNIT	1	○	○	○	
A19	AXW264-6WJ0	HOSE CLAMP	2	○	○	○	
A20	AXW237-7FH0	SUCTION HOSE A	1	○	○	○	

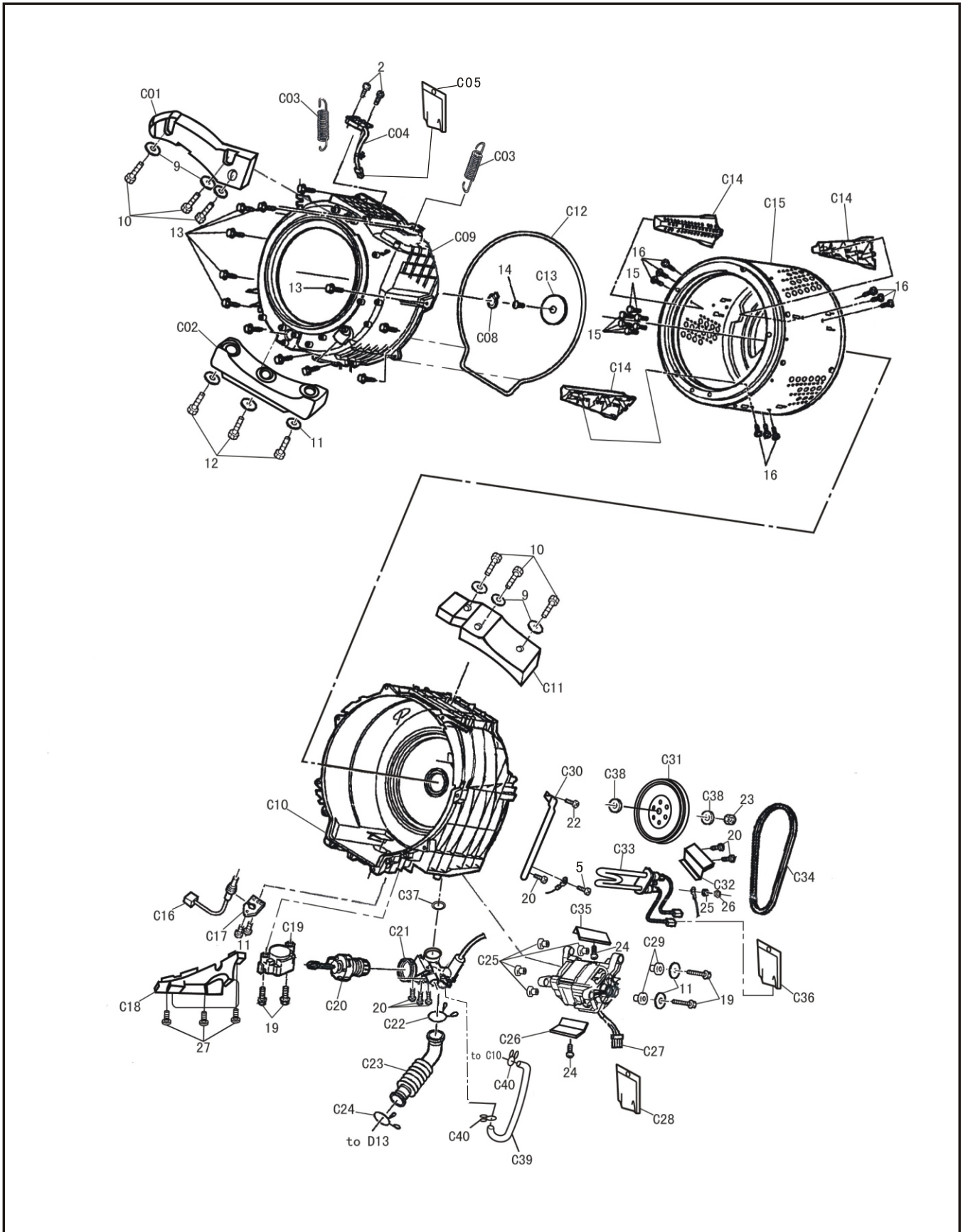
# LOCATION OF PARTS-B



## REPLACEMENT PARTS LIST-B

Ref. No.	Part No.	Description	Q'ty	Model No.			Remarks
				16VX1	16VG1	14VA1	
B01	AXW24S-7FH06	CONTROLLER UNIT A	1	○	×	×	△
	AXW24S-7FJ06	CONTROLLER UNIT A	1	×	○	○	△
B02	AXW146-7FH0	CONTROLLER PLATE	1	○	×	×	
	AXW146-7FJ0	CONTROLLER PLATE	1	×	○	×	
	AXW146-7FK0	CONTROLLER PLATE	1	×	×	○	
B03	AXW149-7FH0	COURSE SELECT KNOB	1	○	○	○	
B04	AXW1J-7FH0	PANEL FACE BOARD UNIT	1	○	○	×	Germany
	AXW1J-7FK0	PANEL FACE BOARD UNIT	1	×	×	○	Germany
	AXW1J-7GX0	PANEL FACE BOARD UNIT	1	○	○	×	UK/Poland
	AXW1J-7GZ0	PANEL FACE BOARD UNIT	1	×	×	○	UK/Poland
	AXW1J-7HA0	PANEL FACE BOARD UNIT	1	○	○	×	France
	AXW1J-7HC0	PANEL FACE BOARD UNIT	1	×	×	○	France
	AXW1J-7HD0	PANEL FACE BOARD UNIT	1	○	○	×	Spain
	AXW1J-7HF0	PANEL FACE BOARD UNIT	1	×	×	○	Spain
B06	AXW2177A7FH0	SOFTENER CASE CAP	1	○	○	○	(U)
B07	AXW21DB7FH0	RINSE CASE UNIT	1	○	×	×	(U)
	AXW21DB7FJ0	RINSE CASE UNIT	1	×	○	×	(U)
	AXW21DB7FK0	RINSE CASE UNIT	1	×	×	○	(U)
B08	AXW147B7FH0	PANEL FACE C	1	○	×	×	(U)
	AXW147B7FJ0	PANEL FACE C	1	×	○	×	(U)
	AXW147B7FK0	PANEL FACE C	1	×	×	○	(U)
B10	AXW1GB7FH0	DOOR UNIT	1	○	×	×	(U)
	AXW1GH7FH0	DOOR UNIT	1	×	○	○	(U)
B11	AXW173G7FH0	BODY BAND PLATE	1	○	×	×	(U)Silver
	AXW173C7FH0	BODY BAND PLATE	1	×	○	×	(U)Grey
	AXW173B7FH0	BODY BAND PLATE	1	×	×	○	(U)White
B12	AXW171G7FH0	BODY BAND A	1	○	×	×	(U)Silver
	AXW171C7FH0	BODY BAND A	1	×	○	×	(U)Grey
	AXW171B7FH0	BODY BAND A	1	×	×	○	(U)White
B13	AXW11D-7FH0	DOOR HINGE	1	○	○	○	
B14	AXW7CG7FH0	DOOR BUTTON	1	○	×	×	Silver
	AXW7CC7FH0	DOOR BUTTON	1	×	○	×	Grey
	AXW7CB7FH0	DOOR BUTTON	1	×	×	○	White
B15	AXW1619-1106	DOOR LOCK SWITCH	1	○	○	○	△
B16	AXW1BB7FH0	BODY B UNIT	1	○	○	○	
B17	AXW163N6YK0	HOLE COVER	7	○	×	×	(U)Silver
	AXW163M6YK0	HOLE COVER	7	×	○	×	(U)Grey
	AXW163B6YK0	HOLE COVER	7	×	×	○	(U)White
B19	AXW172-6UN1	BODY BAND B	1	○	○	○	
B20	AXW212-7EU0	WRINGER FRAME PACKING	1	○	○	○	
B21	AXW172-6UN0	BODY BAND B	1	○	○	○	
B22	AXW448-20120	CHEMICAL COVER	1	○	○	○	
B23	AXW14A-7FH0	LEAD WIRE UNIT	1	○	○	○	△ Upper side

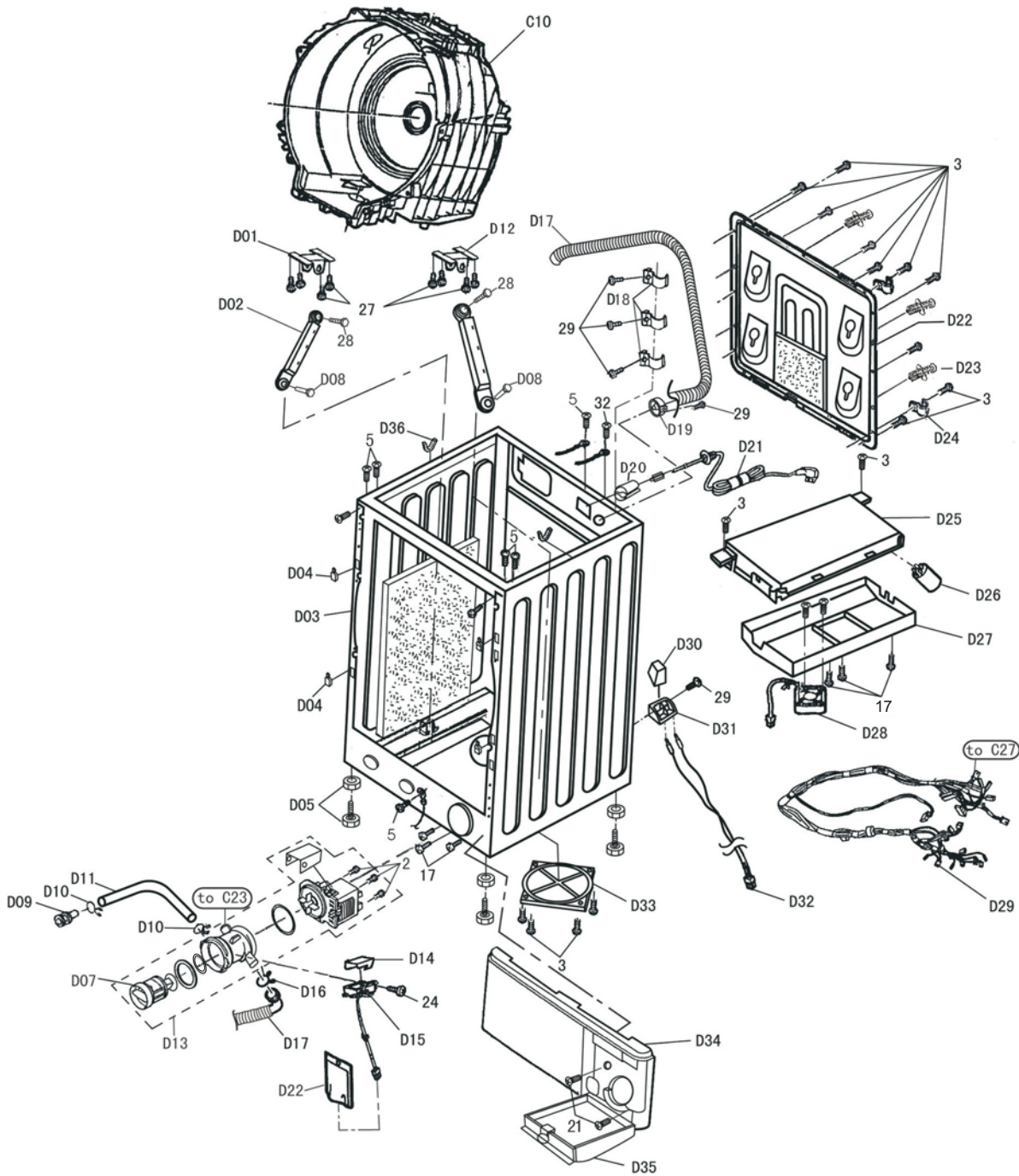
# LOCATION OF PARTS-C



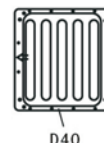
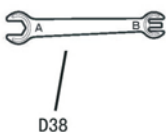
## REPLACEMENT PARTS LIST-C

Ref. No.	Part No.	Description	Q'ty	Model No.			Remarks
				16VX1	16VG1	14VA1	
C01	AXW1231-7FH1	BALANCING WEIGHT	1	○	○	○	
C02	AXW1231-7FH2	BALANCING WEIGHT	1	○	○	○	
C03	AXW3441-6YK1	SUSPENSION	2	○	○	○	
C04	AXW24N-7FH0	3D SENSOR	1	○	○	○	△
C05	AXW448-20120	CHEMIAL COVER	1	○	○	○	
C08	AXW2259-6YK1	COVER CAP	1	○	○	○	
C09	AXW32G-7FH0	OUTER TUB COVER	1	○	○	○	Includes C12
C10	AXW12A-7FH0	OUTER TUB COMPLETE	1	○	○	○	Includes C21.C37
C11	AXW1231-7FH0	BALANCING WEIGHT	1	○	○	○	
C12	AXW822-7EU0	OUTER TUB PACKING	1	○	○	○	Included in C09
C13	AXW2258-6YK0	COVER	1	○	○	○	
C14	AXW2228A7FH0	BAFFLE PLATE	3	○	○	○	Included in C15
C15	AXW22B-7FH0	DRUM A UNIT	1	○	○	○	Includes C14
C16	AXW24N-040	THERMAL DETECTOR UNIT	1	○	○	○	TH4 △
C17	AXW1371-6UN1	THERMAL DETECTOR HOLDER	1	○	○	○	
C18	AXW307-7EU0	MOTOR PLATE A	1	○	○	○	
C19	AXW3482-3106	GEARED MOTOR	1	○	○	○	△
C20	AXW903-6UN0	VALVE PACKING UNIT	1	○	○	○	
C21	AXW9D-7EU0	VALVE FRAME UNIT	1	○	○	○	Included in C10
C22	AXW245-6WJ1	HOSE CLAMP	1	○	○	○	
C23	AXW231-7FH0	DRAIN HOSE B	1	○	○	○	
C24	AXW245-6WJ0	HOSE CLAMP	1	○	○	○	
C25	AXW420-6UN6	MOTOR WASHER A	4	○	○	○	
C26	AXW477-6YK1	MOTOR COVER B	1	○	○	○	
C27	AXW401-7FH06	MOTOR	1	○	○	○	△
C28	AXW448-6UN0	CHEMIAL COVER	1	○	○	○	
C29	AXW420-6UN5	MOTOR WASHER A	2	○	○	○	
C30	AXW333-7FH0	EARTH WIRE PLATE	1	○	○	○	
C31	AXW5F-7FH0	IMPELLER PULLEY	1	○	○	○	
C32	AXW1238-7BB0	WATER PROTECTION COVER	1	○	○	○	
C33	AXW13C-75105	HEATER UNIT	1	○	○	○	△
C34	AXW412-7FH0	BELT	1	○	○	○	(U)
C35	AXW479-6YK1	MOTOR COVER C	1	○	○	○	
C36	AXW448-20120	CHEMIAL COVER	1	○	○	○	
C37	AXW822-6UN2	OUTER TUB PACKING	1	○	○	○	Included in C10
C38	AXW518-6UN00	WASHER	2	○	○	○	
C39	AXW232-7FH0	DRAIN HOSE C	1	○	○	○	
C40	AXW264-6WJ0	HOSE CLAMP	2	○	○	○	

# LOCATION OF PARTS-D



## Accessories

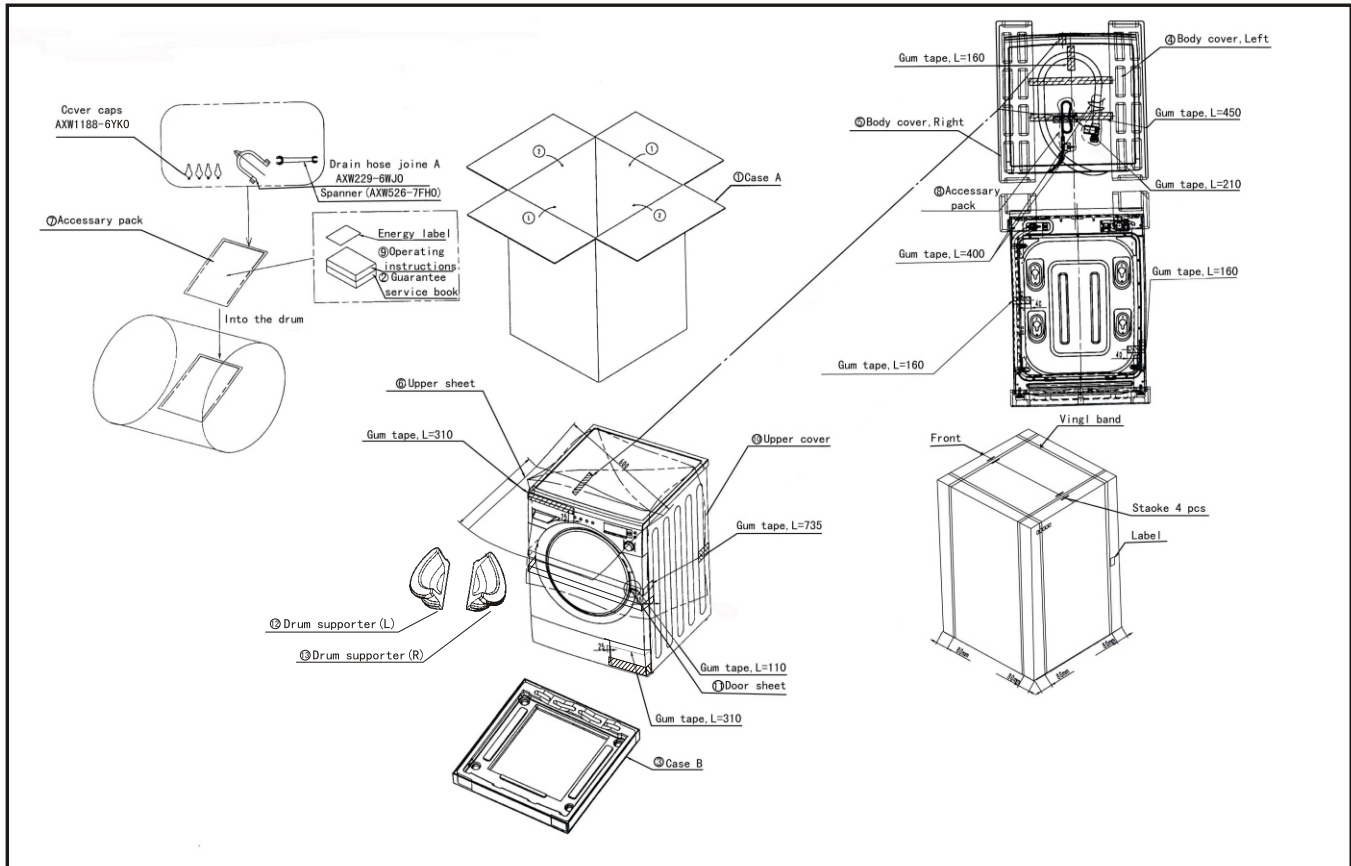


## REPLACEMENT PARTS LIST-D

Ref. No.	Part No.	Description	Q'ty	Model No.			Remarks
				16VX1	16VG1	14VA1	
D01	AXW1150-7FH0	TUB SUPPORT PLATE	1	○	○	○	
D02	AXW2331-6YK3	DAMPER SPRING	2	○	○	○	
D03	AXW1AB7FH0	BODY UNIT	1	○	○	○	Includes D05
D04	AXW135-7FH0	HOOK	4	○	○	○	
D05	AXW3I-7EU0	LEG PLATE UNIT	4	○	○	○	(U)
D07	AXW2205A7FH0	DRAIN FILTER	1	○	○	○	(U) Includes Seal rings
D08	AXW334-6YK0	DAMPER HOLDER PIN	2	○	○	○	
D09	AXW260-6WJ0	SUB DRAIN PORT CAP	1	○	○	○	(U)
D10	AXW264-6WJ0	HOSE CLAMP	2	○	○	○	(U)
D11	AXW230-7FH0	DRAIN HOSE A	1	○	○	○	
D12	AXW1150-7FH1	TUB SUPPORT PLATE	1	○	○	○	
D13	AXW8R-7FH0	DRAIN PUMP UNIT	1	○	○	○	△ Includes D07
D14	AXW686-7EP0	WATERPROOF COVER	1	○	○	○	
D15	AXW26M-7FH0	FILTER VALVE LEAD SWITCH	1	○	○	○	△
D16	AXW245-6WJ4	HOSE CLAMP	1	○	○	○	
D17	AXW2EA7FH0	DRAIN HOSE UNIT	1	○	○	○	
D18	AXW120A7FH0	DRAIN HOSE HOLDER	3	○	○	○	(U)Inside
D19	AXW170A7FH0	DRAIN HOSE HOLDER	1	○	○	○	
D20	SFT-72SN	MAGNET RING	1	○	○	○	△
D21	AXW4A-7FH0	POWER CORD	1	○	○	○	△ Germany/France/Spain/Poland
	AXW4A-7GX0	POWER CORD	1	○	○	○	△ UK
D22	AXW156-7FH0	REAR PANEL	1	○	○	○	(U)
D23	AXW90E-7FH1	OUTER TUB HOLDER UNIT	4	○	○	○	(U)
D24	AXW120A7FH1	DRAIN HOSE HOLDER	3	○	○	○	(U)Outside
D25	AXW24C-7FH06	PC BOARD W/COMPONENTS	1	○	×	×	△ Germany/UK/France/Spain/Poland
	AXW24C-7FJ06	PC BOARD W/COMPONENTS	1	×	○	×	△ Germany/France
	AXW24C-7FK06	PC BOARD W/COMPONENTS	1	×	×	○	△ Germany
	AXW24C-7GY06	PC BOARD W/COMPONENTS	1	×	○	×	△ UK/Spain/Poland
	AXW24C-7GZ06	PC BOARD W/COMPONENTS	1	×	×	○	△ UK/France/Spain/Poland
D26	AXW2430-0380	NOISE FILTER	1	○	○	○	△
D27	AXW542-7FH0	PC BOARD COVER C	1	○	○	○	
D28	L6FAKEDH0014	FAN UNIT	1	○	○	○	△
D29	AXW14B-7FH0	LEAD WIRE UNIT B	1	○	○	○	△ Lower side
D30	AXW621-7FH0	SWITCH PLATE A	1	○	○	○	
D31	AXW624-7FH0	SWITCH PLATE B	1	○	○	○	
D32	AXW14A-7FH1	WATER LEAK SENSOR	1	○	○	○	△
D33	AXW2159-7FH0	BOTTOM PLATE A	1	○	○	○	Includes Seal ring
D34	AXW130B7FH0	PANEL A	1	○	○	○	Includes Label
D35	AXW140B7FH0	PANEL B	1	○	○	○	(U) Includes Label
D36	AXW3440-7FH0	SUSPENSION HOLDER	2	○	○	○	
D37	AXW1188-6YK0	COVER CAPS	4	○	○	○	(U)
D38	AXW526-7FH0	SPANNER	1	○	○	○	(U)
D39	AXW229-6WJ0	DRAIN HOSE JOINT A	1	○	○	○	(U)
D40	AXW4595-7FH0	METAL COVER	1	○	○	○	(U)



# PACKING INSTRUCTIONS





## PACKING PARTS LIST

Ref. No.	Part No.	Description	Q'ty	Model No.			Remarks
				16VX1	16VG1	14VA1	
1	AXW90E-7FH0	CASE A	1	○	×	×	
	AXW90E-7FJ0	CASE A	1	×	○	×	
	AXW90E-7FK0	CASE A	1	×	×	○	
2	AXW9923-7FH0	GUARANTEE SERVICE BOOK	1	○	○	○	
3	AXW90B-7FH0	CASE B	1	○	○	○	
	AXW9004-7FH0	BODY COVER(L)	1	○	○	○	
	AXW9004-7FH1	BODY COVER(R)	1	○	○	○	
	AXW9069-7FH0	UPPER SHEET	1	○	○	○	
	AXW9057-7BB0	ACCESSORY PACK	1	○	○	○	Operating instructions
	AXW9057-7FH1	ACCESSORY PACK	3	○	○	○	Power cord
	AXW4F-7FH0	OPERATING INSTRUCTIONS	1	○	○	○	Germany
	AXW4F-7GX0	OPERATING INSTRUCTIONS	1	○	○	○	UK
	AXW4F-7HA0	OPERATING INSTRUCTIONS	1	○	○	○	France
	AXW4F-7HD0	OPERATING INSTRUCTIONS	1	○	○	○	Spain
	AXW4F-7HG0	OPERATING INSTRUCTIONS	1	○	○	○	Poland
10	AXW9060-7FH0	UPPER COVER	1	○	○	○	
11	AXW9070-7BB0	DOOR SHEET	1	○	○	○	
12	AXW9054-7FH1	DRUM SUPPORTER	1	○	○	○	L
13	AXW9054-7FH2	DRUM SUPPORTER	1	○	○	○	R

### SMALL STANDARDIZED METAL PARTS

Ref. No.	Part No.	Description	Q'ty	Model No.			Remarks
				16VX1	16VG1	14VA1	
1	XTWAXW466J	SCREW	10	○	○	○	
2	XTB4+16CFJ	SCREW	20	○	○	○	
3	XTB4+10FFJ	SCREW	35	○	○	○	
4	XTB4+16CXR	SCREW	1	○	○	○	
5	XTBAXW437J	SCREW	19	○	○	○	
6	XTBAXW438J	SCREW	2	○	○	○	
7	XST4+16V	SCREW	3	○	○	○	
8	XTT4+12FXR	SCREW	7	○	○	○	
9	XWL10J27FJ	WASHER	6	○	○	○	
10	XTWAXW8503J	SCREW	6	○	○	○	
11	XWL7J27FJ	WASHER	5	○	○	○	
12	XTWAXW6520	SCREW	3	○	○	○	
13	XTWAXW6514J	SCREW	19	○	○	○	
14	XTTAXW511	SCREW	1	○	○	○	
15	XVGAXW848	SCREW	6	○	○	○	
16	XTB4+12CV	SCREW	10	○	○	○	
17	XTB4+12BFJ	SCREW	10	○	○	○	
19	XTWAXW6516J	SCREW	4	○	○	○	
20	XTB5+20BFJ	SCREW	6	○	○	○	
21	XTT4+16BX	SCREW	2	○	○	○	
22	XYA5+12CHFJ	SCREW	1	○	○	○	
23	XNGAXW1801J	NUT	1	○	○	○	
24	XTB4+12GFJ	SCREW	3	○	○	○	
25	XWAAXW601	WASHER	1	○	○	○	
26	XNF6FJ	NUT	1	○	○	○	
27	XTWAXW6513J	SCREW	11	○	○	○	
28	XVHAXW1008J	SCREW	2	○	○	○	
29	XTB4+8BFJ	SCREW	9	○	○	○	
32	XYN5+C10BN	SCREW	1	○	○	○	

### TOOLS:

Ref. No.	Part No.	Description	Q'ty	Model No.			Remarks
				16VX1	16VG1	14VA1	
1	JF066	PULLEY HOLDER	1	○	○	○	Impeller pulley
2	HW-16	BOX WRENCH(10mm) 	1	○	○	○	Supply from Japan
3	HW-18	BOX WRENCH(13mm) 	1	○	○	○	Supply from Japan