



Philips Domestic Appliances and Personal Care

Service Manual

PRODUCT INFORMATION

- This product meets the requirements regarding interference suppression on radio and TV.
- After the product has been repaired, it should function properly and has to meet the safety requirements as officially laid down at this moment.

TECHNICAL INFORMATION

- Colour : Grenadine Red
- Power consumption : 1400 W
(IEC) 230V
- Maximum Air displacement : 32 l/s
- Dust storage capacity : 1 L
- Cord length : 5 m
(depending on type)
- Filter system : Pleated cyclone-filtration
system
: HEPA Exhaust filter
- Noise : 85 dB

ACCESSORIES

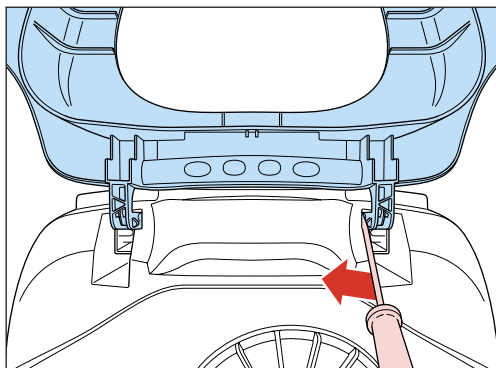
- Nozzle : All purpose floor nozzle
- Additional nozzle : Hard Floor nozzle
- Tubes : Plastic colored tubes
- Accessories : Crevice nozzle and Small nozzle
- Coupling : Conical coupling

OPTIONAL (accessories)

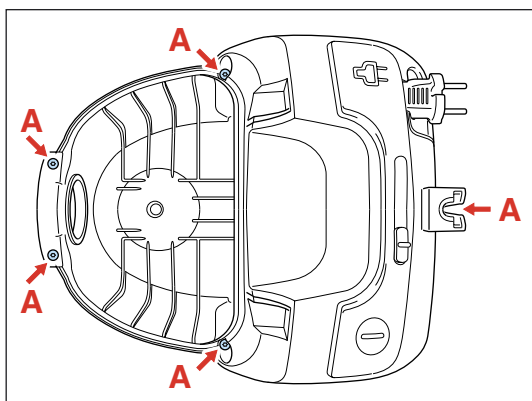
- FC8028 Pleated Filter cylinder 8838 028 01010
- FC8029 HEPA Exhaust filter 8838 029 01010
- Filter cleaning brush 4322 004 20130

DISASSEMBLY- AND RE-ASSEMBLY ADVISE

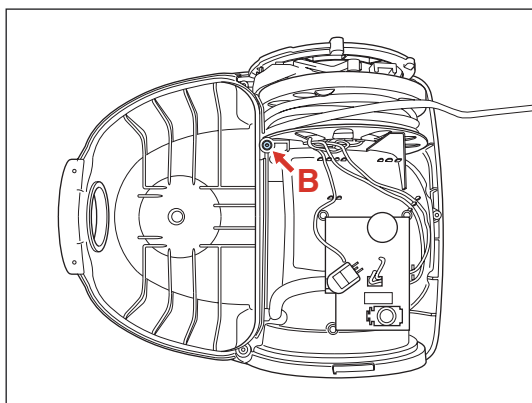
- First remove the dust bag.
- Remove the dustcover using a screwdriver (see picture).



- When the dustcover has been removed, the 5 screws **A** that need to be unscrewed to disassemble the upper housing, are accessible.



- After removing screw **B**, lift the motor cap (item 17) out of the lower housing to be able to take out the cord winder unit.

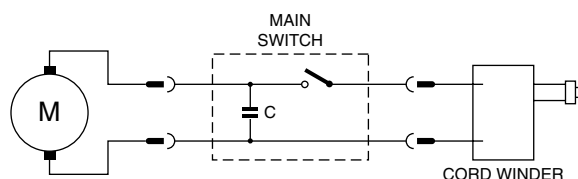


- To disassemble the cord winder, use TORX screwdriver no. T10, which is one of a set consisting of T20; T15; T10; T9; T8; T7 and T6 (code number 4822 395 50145).
- During re-assembling, take care the wires are positioned in the guides correctly.

REPAIR INSTRUCTION

- The spare parts have been standardized as much as possible.
- Depending on the original cord, the spare cord must be shortened to the length of the original cord.
- The cord winder spring must be tensioned to the maximum level and then be rewound approx. 1.5 turn
- If the reel half spring unit is replaced, shaft **D** must be lubricated with silicone grease. Do not apply any silicone grease to or spill any grease on terminals (item 30) or conductors (item 29).
- Item 7, air valve, opens to cool the motor if the air displacement is too low or if the airflow is blocked.

ELECTRICAL DIAGRAM




PARTS LIST

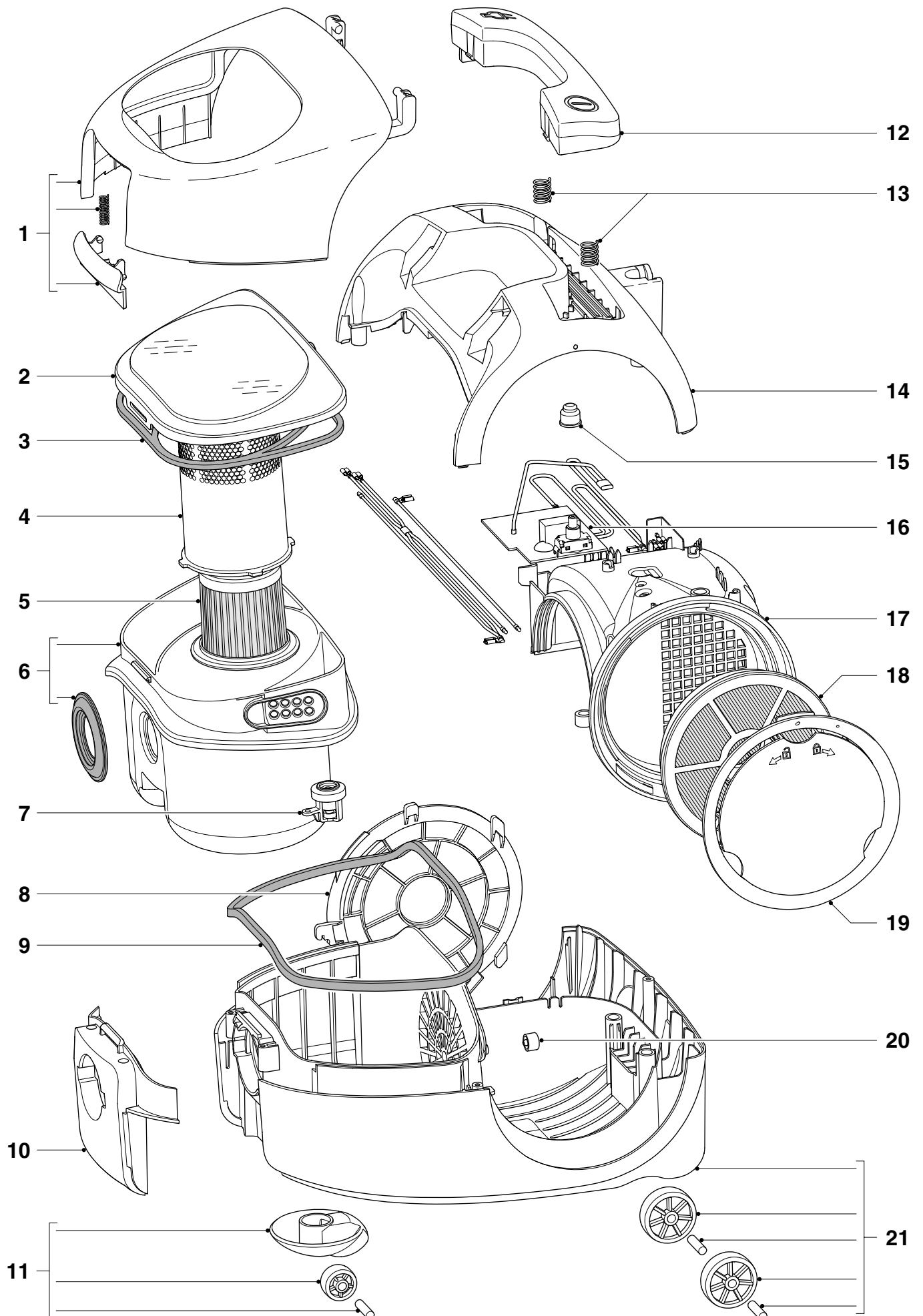
FC8257/01

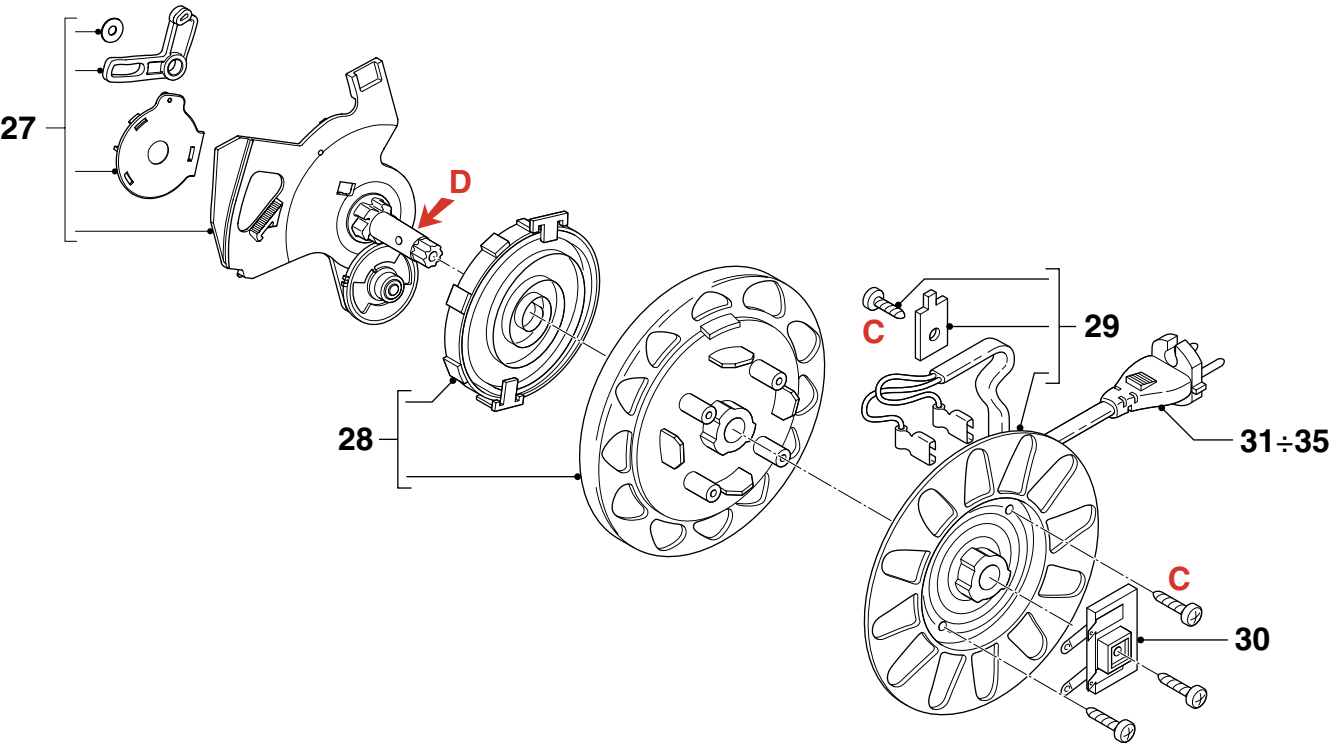
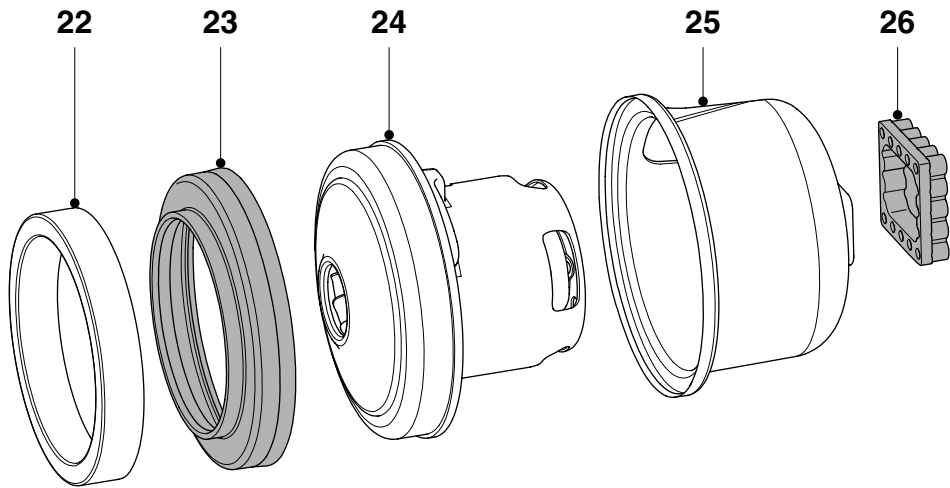
Pos	Service code	Description
1	4322 009 09750	Dustcover Assy Grenadine Red
2	4322 003 29290	Container cover Grenadine Red
3	4322 001 73680	Sealing ring
4	4322 003 29030	Filter case Spectra Yellow *
5	4322 005 20850	Filter Spectra Yellow *
6	4322 005 20840	Dustbucket Spectra Yellow *
7	4322 005 19070	Valve assy
8	4322 003 28510	Side panel
9	4322 001 73610	Dustcover seal
10	4322 003 28480	Nose piece
11	4322 005 20760	Caster assy
12	4322 003 28590	Buttons Artic Ice
13	4322 000 68060	Button spring
14	4322 003 28570	Back panel Dark raven
15	4322 003 29580	Switch cap non-electronic
16	4322 006 23390	PCB non electronic
17	4322 003 28560	Motor cap
18	4322 005 20820	HEPA filter Gemini
19	4322 003 28670	Air outlet cover HEPA
20	4322 001 73600	Plug Gemini Bag
21	4322 005 22630	Lower housing non electronics
22	4322 001 73590	Motor buffer front

Pos	Service code	Description
23	4322 003 28680	Motor front support Domus
24	4322 006 98040	Motor Domus 240 V 1400 W
	4322 006 97970	Motor Domus 230 V 1400 W
	4322 006 98000	Motor Domus 220 V 1400 W (ccc)
25	4322 003 28550	Air guide Domus
26	4322 001 73580	Bufferback Gemini
27	4322 005 20770	Base plate assy Gemini
28	4322 009 07610	Real half spring unit
	4322 009 09060	Real half spring unit PRC
29	4341 005 01330	Real half contact side
30	4341 005 00790	Contact plate assy
31	4341 006 01890	Cordset Taiwan/PRC L = 5.3 m
32	4322 006 02100	Cordset U.K./H.K. L = 6.3 m
33	4322 006 02160	Cordset Europe L = 6.3 m
34	4322 006 02080	Cordset Swiss L = 6.3 m
35	4322 006 07600	Cordset Brazil L = 7.3 m
36	4341 004 20420	Bend/hose assy
37	4341 005 01240	Bend handle
38	4322 004 23730	Plastic tube (1pcs) Grey *
39	4341 004 20170	Crevise nozzle con.
40	4341 004 20100	Small nozzle con.
41	4341 004 20440	Nozzle D272
42	4822 479 20039	Nozzle brush
43	4822 479 20038	Nozzle strip
44	4322 004 22860	HF Nozzle conical

* Standardized colour

 = changed





EXPLODED VIEW

FC8257/01

