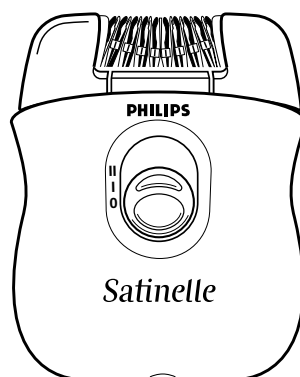


Service
Service
Service



Philips Domestic Appliances and Personal Care

Service Manual

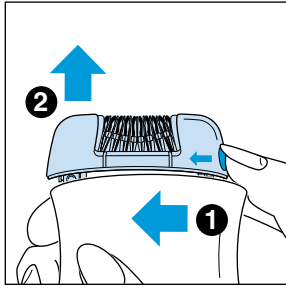
SAP coding: HP 6404/PB

PRODUCT INFORMATION

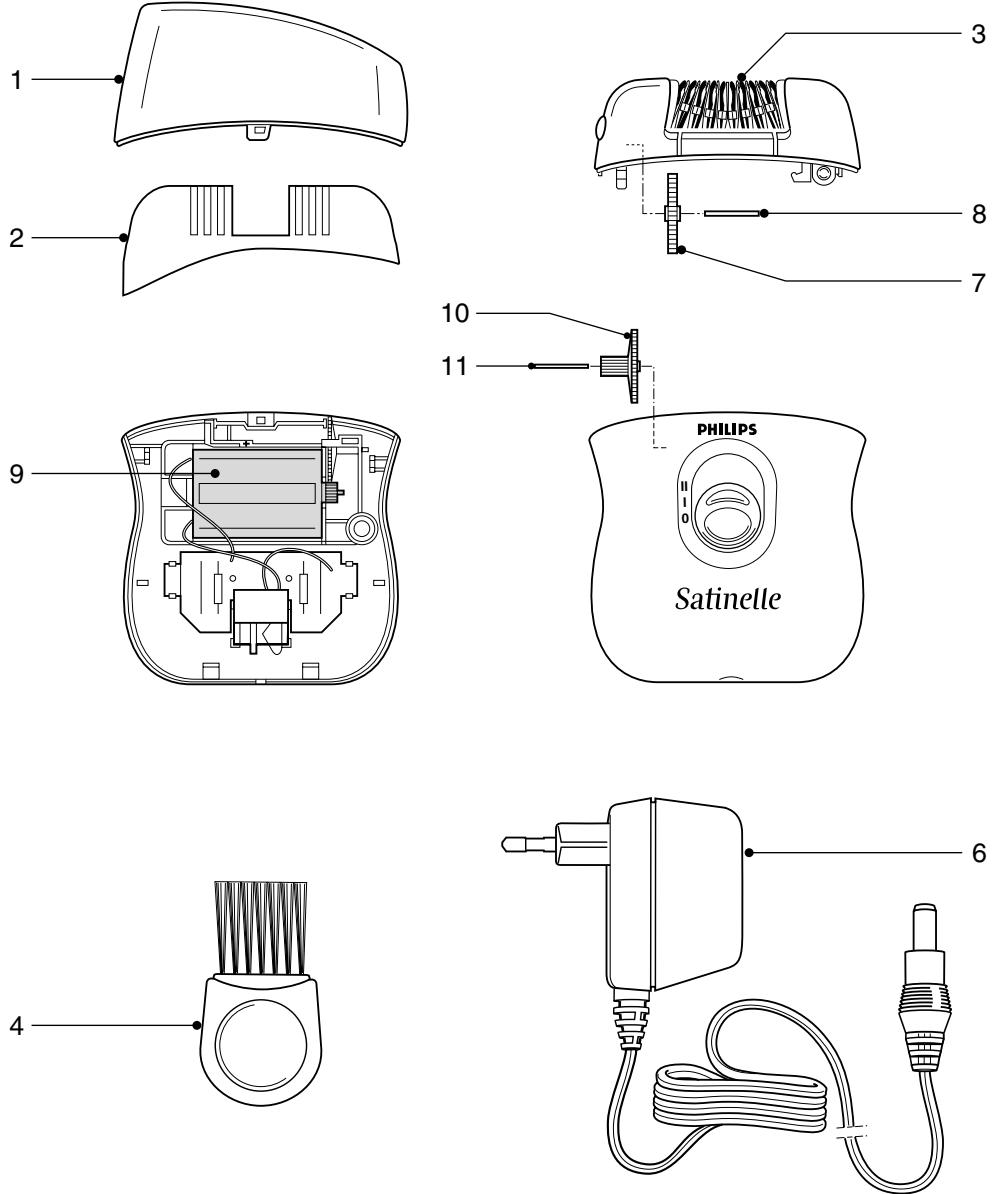
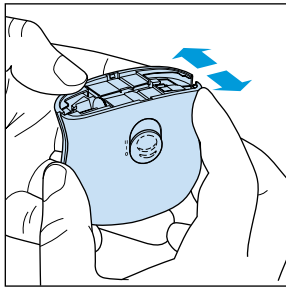
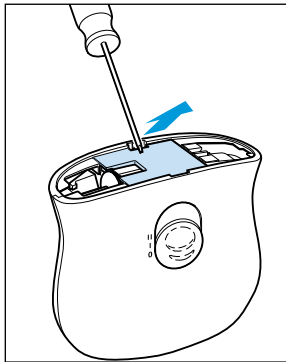
Colour	: sylvan green
Speed	: 2 speeds
Operation	: DC/mains
Input voltage	: 100 - 127V 220 - 240V
Power consumption	: 2.5 Watts
Number of discs	: 21 (pincette system)
RPM	: speed 1 - 1800 rpm, speed 2 - 2200 rpm

Product meets the requirements regarding interference suppression on radio and TV.

to remove **EPIATING UNIT 3**



to open **THE APPLIANCE**



Pos	Description	Service code
1	Protecting cap	4203 035 75820
2	Precision cap	4203 035 75770
3	Epilating unit	4203 035 75760
4	Brush	4822 479 30177
5	Pouch (not shown in the exploded view)	4203 035 75750
6	Adapter EU	4822 690 30457
	Adapter UK	4822 690 30462
	Adapter CDN	4822 690 30455
	Adapter Japan	4822 690 30459
	Adapter Korea	4822 219 10166
	Adapter Brazil 220 V	4822 219 10169
	Adapter Australia	4822 219 10173
	Adapter PRC	4822 219 10337
7	Gear wheel epilating unit	4822 522 10775
8	Spindle gear wheel	4822 535 10652
9	Motor	4203 035 71470
10	Gear wheel motor part ')	4822 522 10774
11	Spindle gear wheel ')	4822 535 10651

‘) When you are able to replace the gear wheels without damaging the motor unit