



Philips Domestic Appliances and Personal Care

Service Manual

SAP coding: HQC486

PRODUCT INFORMATION

General description:

2D ContourTracking System™

2D flexing guide comb offers maximum control and ensures perfect results every time.

Safety Lock

Safety Lock secures the selected length setting for increased accuracy and even cutting.

15 length settings (1-41 mm)

15 length settings allow a range of styling possibilities to suit the whole family

Materials used:

- housing : ABS
- combs : PA / PC
- others : PA / POM / SAN / steel

Features:

lubrication for life

- Maintenance free cutting unit ensures consistent high performance

Translucent guide comb

- For maximum visibility of the process

3D rounded teeth

- For ultimate skin protection

Hygiene

- Hinged cutting lid allows easy cleaning

Interactive CDrom

- The ultimate interactive way to help you style your hair

Ultra light design

- Efficient and compact for optimal handling

Barber set

- Styling comb, cleaning brush, scissors

Protective pouch

- Handy pouch for save storage or travel

TECHNICAL INFORMATION:

Power supply : RC / AC
Charging time : 12 h
Cordless operation time : 35 min
Charging indication : yes - LED on appliance

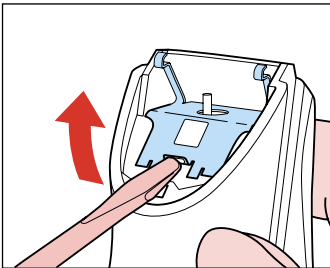
primary (EU) : 220-240 V - 50/60 Hz
secondary (EU) : 1,3 V - 1500 mA
primary (CDN / USA) : 120 V - 60 Hz
secondary (CDN / USA) : 1,3 V - 1500 mA

Dimensions F-box : 19,5 x 8,1 x 24 cm

Weight F-box : 0,89 kg

Weight product (without comb) : 154 g

DISASSEMBLY ADVISE



REPAIR INSTRUCTIONS

- No specific issues

OPTIONAL (ACCESSORIES)

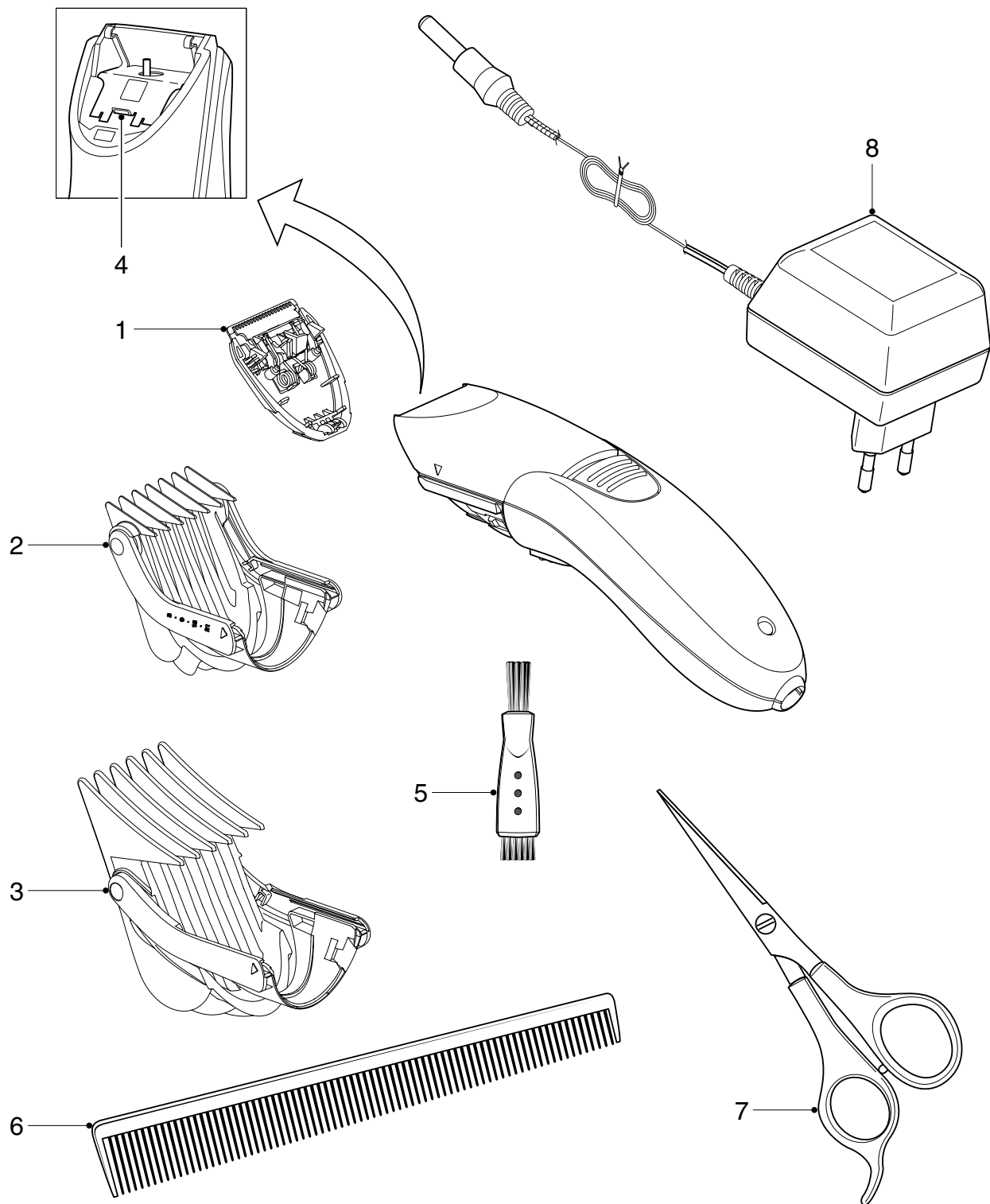
- No specific issues

Product meets the requirements regarding interference suppression on radio and TV.

Never use again a deformed housing clamp (4).
After the product has been repaired, it should function properly and has to meet the safety requirements as laid down and officially established at this moment.


NOTES :

- In order to guarantee the longest possible workinglife of the battery:
 - do not charge for more than 24 hours
 - do not keep the charging unit permanently plugged in
 - discharge the battery completely once a year by letting the motor run until it stops
- The appliance should be charged again, when not used for a long period



| Pos | Service code | Description |
|-----|----------------|----------------|
| 1 | 4203 035 79340 | Cutter |
| 2 | 4203 035 79370 | Small comb |
| 3 | 4203 035 79360 | Large comb |
| 4 | 4203 035 71060 | Housing clamp |
| 5 | 4822 479 30183 | Cleaning brush |
| 6 | 4822 690 30433 | Barbers comb |

| Pos | Service code | Description |
|-----|----------------|------------------|
| 7 | 4822 690 30434 | Scissors |
| 8 | 4822 690 30441 | Adapter - EU |
| | 4822 690 30442 | Adapter - GB |
| | 4822 690 30443 | Adapter - USA |
| | 4822 690 30444 | Adapter - CANADA |
| | 4822 219 10149 | Adapter - AUS |
| | 4822 219 10148 | Adapter - JAPAN |

 = changed