



HR2061/00
HR2061/02
HR2064/00
HR2066/00
HR2067/00
HR2067/02

Philips Consumer Lifestyle

Service Manual

PRODUCT INFORMATION

HR2061/00 = Basic Blender + Eco Mill
 HR2061/02 = Basic Blender + Full Mill
 HR2064/00 = Basic Blender + Fruitfilter
 HR2066/00 = Basic Blender + Fruitfilter + Citrus Press
 HR2067/00 = Basic Blender + Fruitfilter + Eco Mill
 HR2067/02 = Basic Blender + Fruitfilter + Full Mill

Features:

- Powerful 600 W
- Break resistant Jar
- 1,5 Litre SAN Jar
- Serrated blades
- Detachable knife unit
- Measuring cup 50 ml
- Suction feet
- Cord storage

Safety

- Attachment safety system
- This product meets the requirements regarding interference suppression on radio and TV.
- After the product has been repaired, it should function properly and has to meet the safety requirements as officially laid down at this moment.

TECHNICAL INFORMATION

- | | |
|-----------------------|--|
| - Power | : 600 W |
| - Voltage / frequency | : 220 - 240 V / 50 - 60 Hz |
| - Jar capacity | : 1,5 Litre max. for mixing
: 2,0 Litre Total |
| - Free Cord length | : 100 cm |
| - SAP coding | : HR2061/00
HR2061/02
HR2064/00
HR2066/00
HR2067/00
HR2067/02 |
| - Length | : 17,5 cm |
| - Width | : 20 cm |
| - Height with Jar | : 40,5 cm |

Materials:

- | | |
|-----------------------|-------------------|
| - Knife unit | : Stainless steel |
| - Jar lid | : PP |
| - Jar + Measuring cup | : SAN |
| - Bottom + Housing | : PP |
| - Switch knob | : ABS lacquered |

DISASSEMBLY- AND RE-ASSEMBLY ADVISE

- No specific issues.

REPAIR INSTRUCTION

- No specific issues.

OPTIONAL (accessories)

- No specific issues.

PARTS LIST

**HR206 I/00
 HR206 I/02
 HR2064/00
 HR2066/00
 HR2067/00
 HR2067/02**

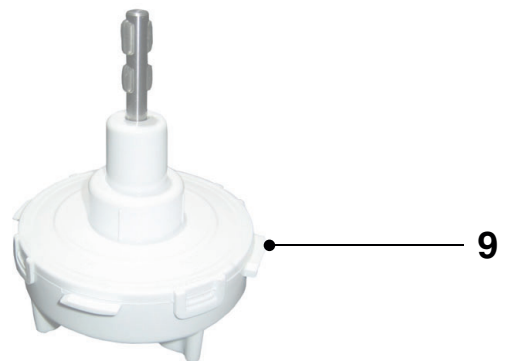
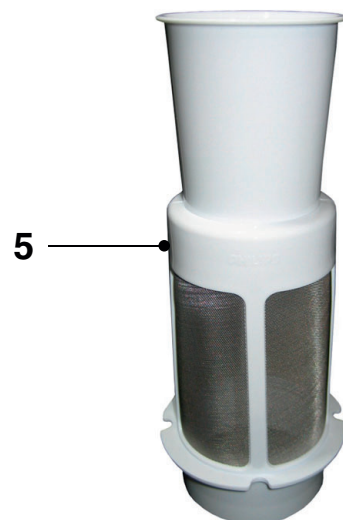
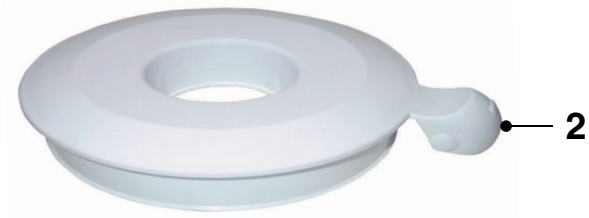
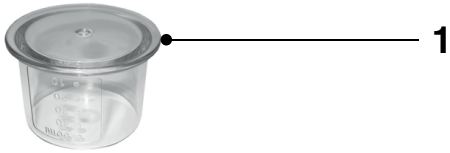
Pos	Service code	Description
1	4206 133 95190	Measuring Cup
2	4206 133 96290	Jar Lid
3	4206 136 56880	Blender Jar
4	4206 136 58770	Blender Knife Assy
5	4206 136 56950	Fruit Filter
6	4206 133 96340	Press Cone
7	4206 136 56930	Sieve
8	4206 133 96390	Bowl
9	4206 136 56940	Gear Box
	4206 136 59530	Gear Box (ID)
10	4206 133 96440	Bowl - Large Mill
11	4206 136 58660	Knife Unit - Large Mill
	9061 500 10110	Mill Interface Assy (ID)
12	4206 133 96460	Bowl - Eco Mill
13	4206 136 54920	Blender Coupling
14	4822 361 11129	Motor Assy 220 V with RIS (WEu, KR)
	4206 136 49380	Motor Assy 220 - 240 V (DB)
	4206 136 52520	Motor Assy 220 - 240 V (ID, MY, TH)
	9061 500 10130	Motor with RoHS (ID)
15	4203 035 89620	Switch Knob assy + wires
16	4206 136 58180	Cordset (WEu, KR)
	4206 136 56490	Cordset (UK)
	9061 500 20020	Cordset Singapur (SG)
	9061 500 20030	Cordset Thailand (TH)
	9061 500 20040	Cordset Malaysia (MY)

Pos. 15: only for Asia/Pacific market available

- (ID) = Indonesia market
- (MY) = Malaysia market
- (SG) = Singapur
- (TH) = Thailand

EXPLODED VIEW

**HR206 I/00
HR206 I/02
HR2064/00
HR2066/00
HR2067/00
HR2067/02**



EXPLODED VIEW

**HR206 I/00
HR206 I/02
HR2064/00
HR2066/00
HR2067/00
HR2067/02**

