

Service  
Service  
Service



HR7951  
HR7952  
HR7954  
HR7958  
HR7950  
HR7955  
HR7974  
HR7978  
HR7932  
HR7934

Philips Consumer Life Style

# Service Manual

## PRODUCT INFORMATION

### Features

- Color(s): White
- Housing material: ABS
- Beater tools: Metal
- Material bowl: Stainless steel

### Accessories included

- 1.25L blender jar
- 4star removable blender blade set
- Food processor (HR7932) for HR7954/HR7958/HR7974/HR7952/HR7978
- Meat mincer (HR7934) for HR7958/HR7978/HR7974
- Juicer Assy (for HR7974)

## TECHNICAL INFORMATION

- |                         |   |  |
|-------------------------|---|--|
| Power                   | : | HR7950/7954/7955/7958 – 900W<br>HR7974/7975/7978 – 1000W |
| - Frequency             | : | 50 / 60 Hz   |
| - Speed                 | : | 16500r/min   |
| - Power cord set length | : | 1.1 m  |
| - Product size:         |   |  |
| - Length                | : | 330 mm   |
| - Width                 | : | 584 mm   |
| - Height                | : | 360 mm   |
| - Weight(no packaging)  | : | 6.27kg for HR7954  |
| -Material of main unit  | : | plastic  |

## SAFETY

- This product meets the requirements regarding interference suppression on radio and TV.
- After the product has been repaired, it should function properly and has to meet the safety requirements as officially laid down at this moment.

## Parts list

Pos	12NC	Description	Remark	CRP
1	996510070499	Beater	HR7951/50/54/55/58/78/74/52	Y
2	996510070504	Hook	HR7951/50/54/55/58/78/74/52	Y
3	996510070516	Drive Shaft	HR7954/58/78/74/52/32	Y
4	996510070517	S-blade	HR7954/58/78/74/52/32	Y
5	996510070526	Shredder Disc Holder	HR7954/58/78/74/52/32	Y
6	996510070521	Julienne Disc	HR7954/58/78/52/32	Y
6	996510072784	Julienne Disc	HR7974	Y
7	996510070513	Pasping Disc	HR7954/58/78/74/52/32	Y
8	996510070515	Slicer_Shredder Disc	HR7954/58/78/74/52/32	Y
9	996510074297	FP Pusher	HR7954/58/78/74/52/32	Y
10	996510070523	Cone & Sleeve	HR7954/58/78/74/32	Y
11	996510070479	Filler Cap	HR7954/51/58/78/74/52	Y
12	996510070501	Blade Holder & seal ring	HR7954/51/58/78/74/52	Y
13	996510070508	Jar and Jar Lid	HR7954/51/58/52	Y
13	996510072102	Jar and Jar Lid	HR7978/74	Y
14	996510075338	Bowl and Bowl Lid (SUS)	HR7954/58/52	Y
14	996510075321	Bowl and Bowl Lid (SUS)	HR7978/74	Y
14	996510075342	Bowl and Bowl Lid (SUS)	HR7932	
15	996510070505	SUS Bowl Cover	HR7951/50/54/55/58/78/74/52	Y
16	996510070473	Whisk	HR7954/51/58/50/55/52	Y
16	996510072106	Whisk Grey	HR7978/74	Y
17	996510070476	SUS Bowl	HR7951/50/54/55/58/78/74/52	Y
18	996510070528	Mill Cup & Bottom	HR7958/78/74	
19	996510070507	Link Rubber Foot(yellow)	HR7954/52	
19	996510070634	Link Rubber Foot(grey)	HR7951/58/50/55/78/74	
20	996510070503	Rotated Shaft & Spring Assy.	HR7954/51/50/52	
20	996510072101	Rotated Shaft & Spring Assy.	HR7958/55/78/74	

## Parts list

21	996510071344	PCBA	HR7954/51/58/78/50/74/55/52	
21	996510072118	PCBA CHINA	HR7955	
22	996510070489	MM Cover	HR7958/78/74	
23	996510070502	FP Cover	HR7951/50/54/55/58/78/74	
24	996510070481	Blender Cover	HR7951/50/54/55/58/78/74	
25	996510070494	Base	HR7954/51/58/50/55/52	
25	996510072109	Base	HR7978	
25	996510072797	Base	HR7974	
26	996510070485	Damping Assy.	HR7951/50/54/55/58/78/74/52	
27	996510070469	Release Shaft & Spring Assy.	HR7951/50/54/55/58/78/74/52	
28	996510070495	Rise Support	HR7951/50/54/55/58/78/74/52	
29	996510070475	Switch Support	HR7951/50/54/55/58/78/74/52	
30	996510070472	Safety Lever	HR7958/55/52	
30	996510072113	Safety Lever	HR7978	
30	996510072789	Safety Lever	HR7974	
31	996510070496	FP Interlock Pin	HR7958/55/52	
31	996510072105	FP Interlock Pin	HR7978	
31	996510072793	FP Interlock Pin	HR7974	
32	996510070488	Main Housing Cover	HR7958/55	
32	996510072112	Main Housing Cover Black 7C	HR7978	
32	996510072798	Main Housing Cover	HR7974	
33	996510070467	Rubber Foot(yellow)	HR7954/52	
33	996510070632	Rubber Foot (grey)	HR7951/58/55/50/78/74	
34	996510070498	Base Cover(yellow)	HR7954/52	
34	996510070633	Base Cover (grey)	HR7951/58/50/55/78/74	
35	996510070493	Blender Lower Coupling	HR7958/55/78/74	
36	996510070477	FP Lower Coupling	HR7958/55/78/74	
37	996510070497	Speed Knob	HR7951/50/54/55/58/78/74/52	
38	996510070487	Lock Knob	HR7951/50/54/55/58/78/74/52	
39	996510075421	Motor, gear box & shaft Assy.	HR7958/78/74/55(WEE)	
40	996510070465	Wind Wall	HR7951/50/54/55/58/78/74/52	
41	996510070471	Power Cord	HR7954/51/58/50/55/52(WE version)	
41	996510072122	Power Cord MEA	HR7955	
41	996510072119	Power Cord CHINA	HR7954/51/58/50/78(MEA version)	
41	996510072103	Power Cord Black	HR7978/74 WEU	

# Parts list

Pos	12NC	Description	Remark	CRP
42	996510070474	Main Housing	HR7958/55	
42	996510072116	Main Housing	HR7978	
42	996510072795	Main Housing	HR7974	
43	996510070466	Motor Bracket	HR7958/55/78/74	
44	996510070492	Rise Cover	HR7958/55	
44	996510072111	Rise Cover BLACK 7C	HR7978	
44	996510072794	Rise Cover	HR7974	
45	996510070468	Micro Switch	HR7951/50/54/55/58/78/74/52	
46	996510070514	Pusher	HR7958/34	Y
46	996510072115	PUSHER GREY	HR7978/74	Y
47	996510070522	Food Tray & Cover	HR7958/78/74/34	Y
48	996510070519	Grinder Chamber	HR7958/78/74/34	Y
49	996510074866	Coupling & Seal Ring	HR7958/78/74/34	Y
50	996510070527	Worm Shaft	HR7958/78/74/34	Y
51	996510070524	Cutting Blade	HR7958/78/74/34	Y
52	996510070525	Grinding Disc	HR7958/78/74/34	Y
53	996510070518	Worm Screw	HR7958/78/74/34	Y
55	996510075462	Main Housing, Gear box, Shaft & Motor Assy.	HR7954	
55	996510075423	Main Housing, Gear box, Shaft & Motor Assy.	H7951/50/52	
55	996510075422	Motor ccc, Gear box shaft & Motor assy, CHINA	HR7955 CHINA	
56	996510070483	screw cover 1#	HR7958/55	
57	996510070506	screw cover 2#	HR7958/55	
58	996510070486	screw cover 3#	HR7958/55	
59	996510070491	screw cover 4#	HR7958/55	
60	996510072108	Screw cover 1# black 7c	HR7978	
61	996510072117	Screw cover 2# black 7c	HR7978	
62	996510072107	Screw cover 3# black 7c	HR7978	
63	996510072104	Screw cover 4# black 7c	HR7978	
64	996510072796	screw cover 1#	HR7974	
65	996510072785	screw cover 2#	HR7974	
66	996510072787	screw cover 3#	HR7974	
67	996510072788	screw cover 4#	HR7974	
69	996510072786	Fine slicing disk ass	HR7974	
70	996510072792	Coarse slicing ass	HR7974	
71	996510073187	PUSHER GREY	HR7974	Y
72	996510073189	HOPPER REAR GREY	HR7974	Y
73	996510073185	WORM SHAFT+ COUPLING	HR7974	Y
74	996510073188	ADJUSTING SCREW	HR7974	Y
75	996510057676	SCREEN	HR7995/HR7974	Y
76	996510073186	SEALING RING	HR7974	Y
77	996510057683	HOPPER FRONT	HR7995/HR7974	Y
78	996510073184	MM HOPPER HOLDER	HR7958/78/74	Y

# Part List view

1



2



3



4



5



6



7



8



9



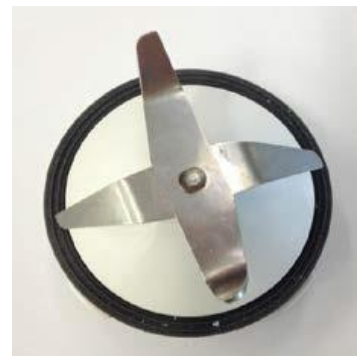
10



11



12



# Part List view

13



14



15



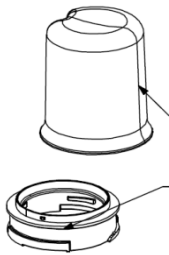
16



17



18



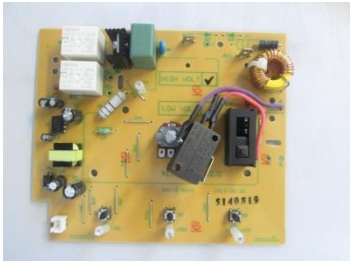
19



20



21



22



23



24



25



26



27



# Part List view

28



29



30



31



32



33



# Part List view

34



35



36



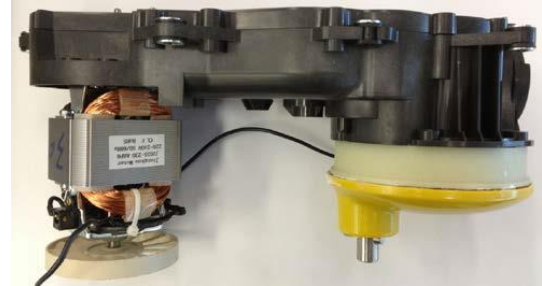
37



38



39



40



41

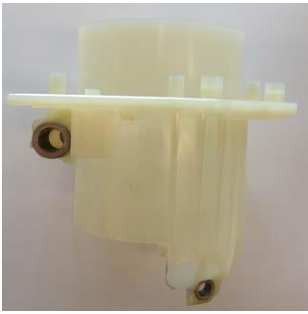


42



# Part List view

43



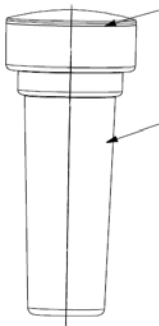
44



45



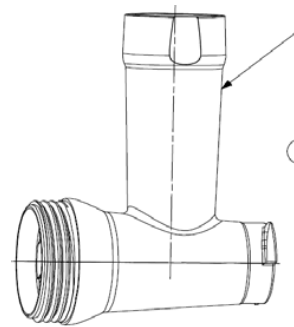
46



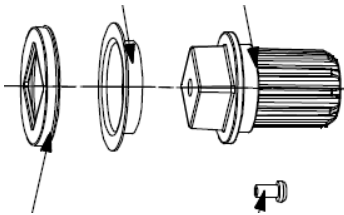
47



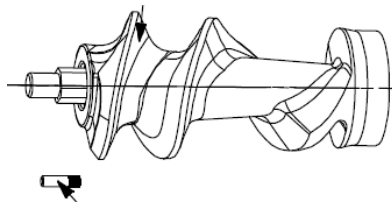
48



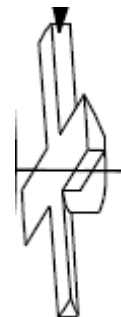
49



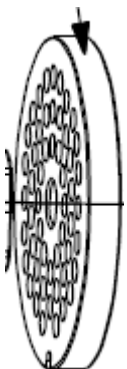
50



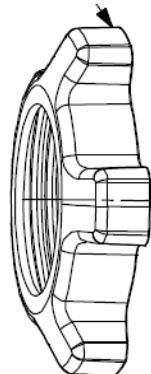
51



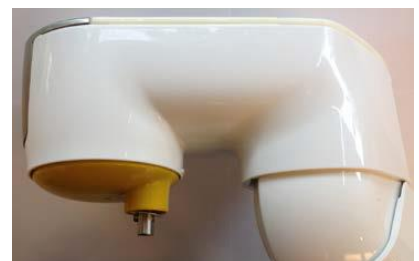
52



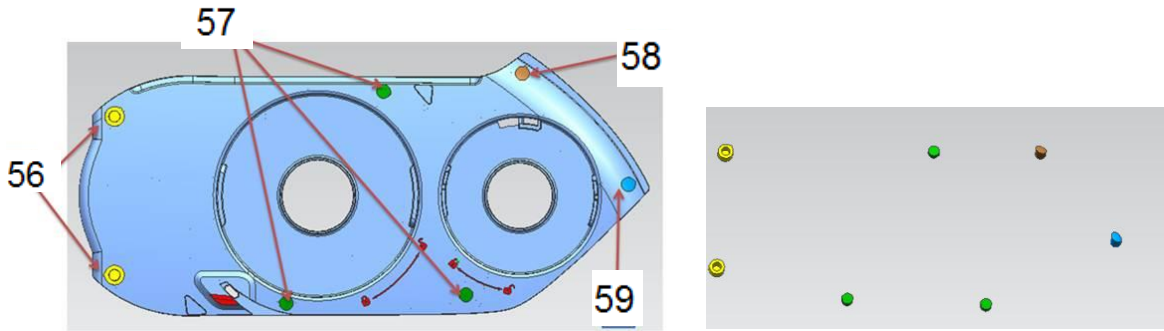
53



55



# Part List view



69



71



72



73



74



75



76



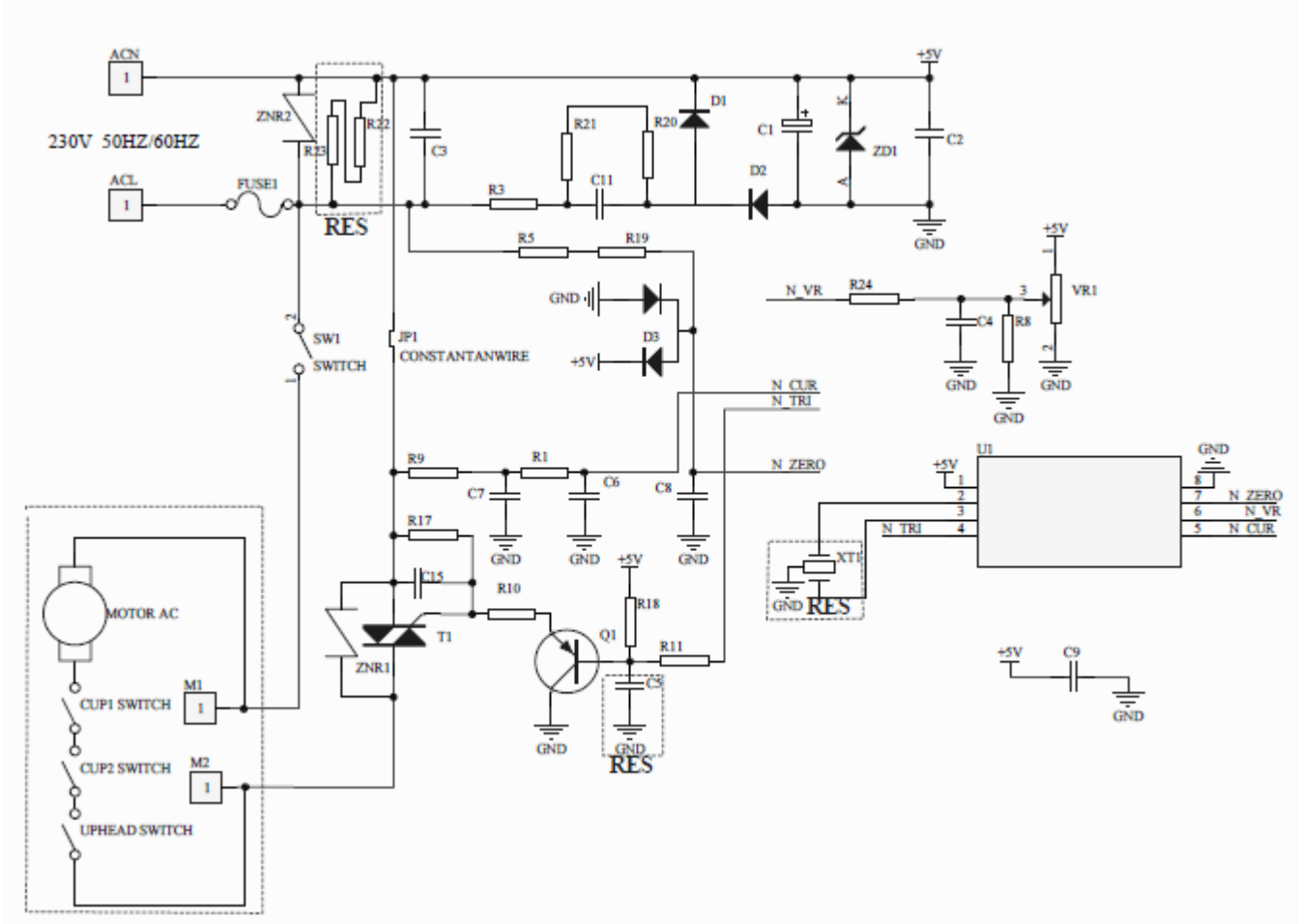
77



78



# circuit diagram



HR7951  
 HR7952  
 HR7954  
 HR7958  
 HR7950  
 HR7955  
 HR7974  
 HR7978

Revision

Version A : initial release---wk1422

Version B: change PCBA version1 from 996510070478 to version2 996510071344.

change Motor 12NC as below:

Model	From	To
HR7958	996510070482	996510071347
HR7951	996510070631	996510071345
HR7954	996510070484	996510071346

---wk1438

Version C: add three new model : HR7978/7955/7950 into service manual. Change HR7958 'rotated shaft & spring assy' from996510070503 to 996510072101 .----wk1450

Version D: add one new model HR7974 into service manual.----WK1502

Version E: add Juicer assy (#68) picture into service manual----wk1506

Version F: set Juicer Assy(#68) as Accessory which composes of #71 ~ #77-----WK1510

Version G: delete #68 (996510072791) Juicer Assy in part list. add #78 MM hopper holder into partlist. Change #71/72/73/74/76 12NC due to the new factory code. ----WK1512

	From	To	
71	996510057678	996510073187	PUSHER
72	996510059059	996510073189	HOPPER REAR
73	996510059058	996510073185	WORM SHAFT+ COUPLING
74	996510057682	996510073188	ADJUSTING SCREW
76	996510057675	996510073186	SEALING RING

Version H: add new model HR7952 into SM.

----WK1536

Version I: change FP Pusher from 996510070511 to 996510074297 ; Bowl & Bowl lid from 996510070509 to 996510074299 ; from 996510072114 to 996510074298 ----WK1539

Version J: Change MOTOR GEAR BOX SHAFT ASSY from 996510071347 to 996510074867; from 996510072121 to 996510074868 TCP -6595.

Change COUPLING AND SEAL RING from 996510070512 to 996510074866  
 TCP- 6573

----WK1548

Version K: Add two Accessories HR7934(Meat Mincer) & HR7932(Food processor) into SM.

-----WK1551

Version L: Change Bowl & Bowl lid from old 12NC 996510074299, 996510074298 to 996510075338, 996510075321, 996510075342 for the washer material change from carbon steel to SUS based on TCP6815.

-----WK1615.

Version M: change Motor Gear Housing as below. TCP6789 motor vanish  
change. ---WK1616

Description	From	To
MAIN HOUSING GEAR BOX SHAFT MOTOR ASSY	996510071345	996510075423
Motor,CCC motor with gear box & shaft Assy,500P	996510074868	996510075422
MAIN HOUSING GEAR BOX SHAFT MOTOR ASSY	996510071346	996510075462
MOTOR GEAR BOX SHAFT ASSY_500P GEAR	996510074867	996510075421

Version N: update power information. -----WK1706

Version O: define #30 #31 as spare part of HR7952. -----wk1710