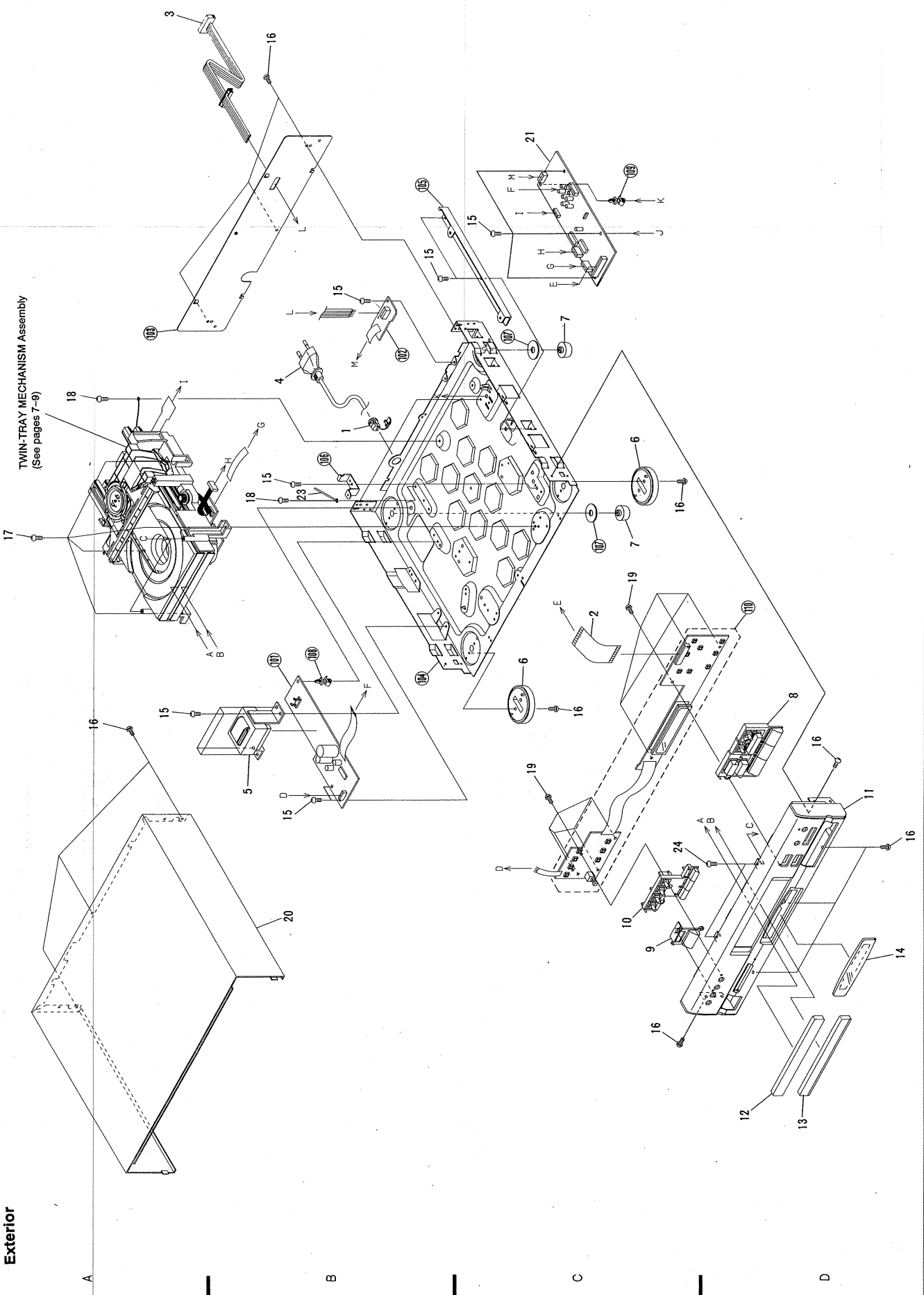
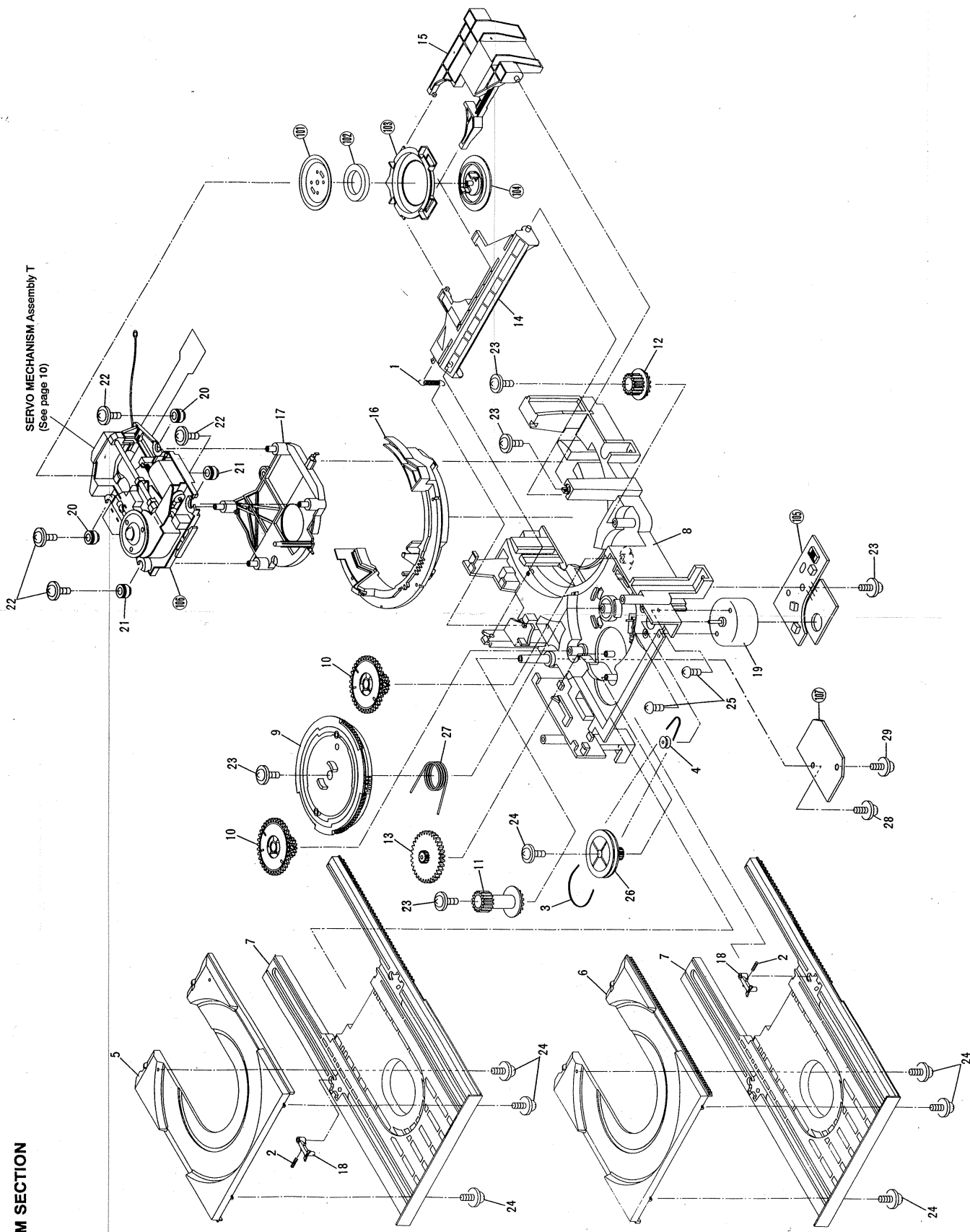


Exterior



TWIN-TRAY MECHANISM Assembly
(See pages 7-9)

4.2 MECHANISM SECTION



A

B

C

D

6

5

4

3

2

1

6

5

4

3

2

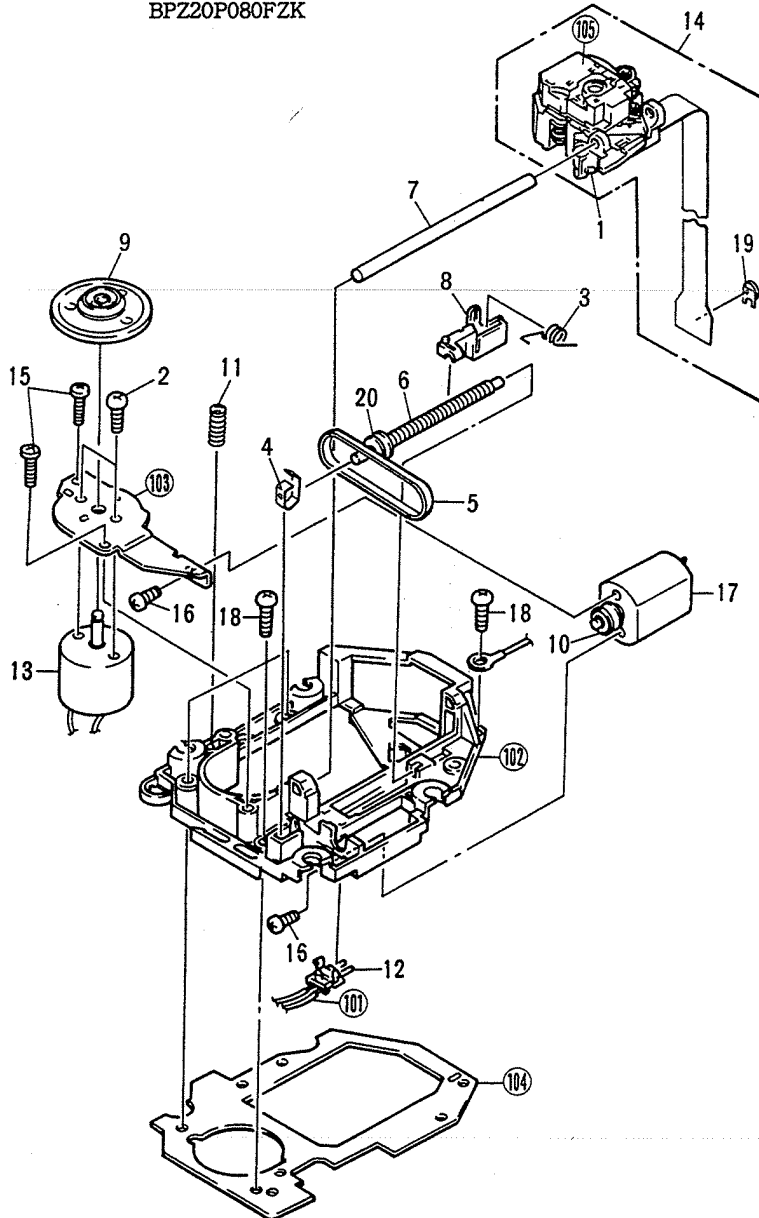
1

7

• Servo mechanism assembly T section

Parts List

Mark No.	Description	Part No.	Mark No.	Description	Part No.
1	Chip capacitor (C1001)	CKSYF105Z16	16	Screw	PMZ20P030FMC
2	Screw	JFZ20P025FMC	17	Motor (CARRIAGE)	PXM1013
3	Drive spring	PBH1084	18	Screw	PBZ30P080FMC
4	Plate spring	PBK1057	19	Semi - fixed resistor (3.3k)	PCP1008
5	Belt	PEB1072	20	Pulley	PNW1066
6	Drive screw	PLA1003	101	Connector assembly (6P)	PDE1089
7	Guide bar	PLA1071	102	Mechanism chassis	PNW1604
8	Half nut	PNW1605	103	Motor base	PNB1211
9	Disc table	PNW1608	104	Mechanism base	PNB1230
10	Pulley	PNW1634	105	Actuator cover	PNW1591
11	Earth spring	PBH1009			
12	Push switch	DSG1014			
13	Spindle motor assembly (with oil)	PEA1028			
14	Pick - up assembly	PEA1030			
15	Screw	BFZ20P080FZK			



A
B
C
D