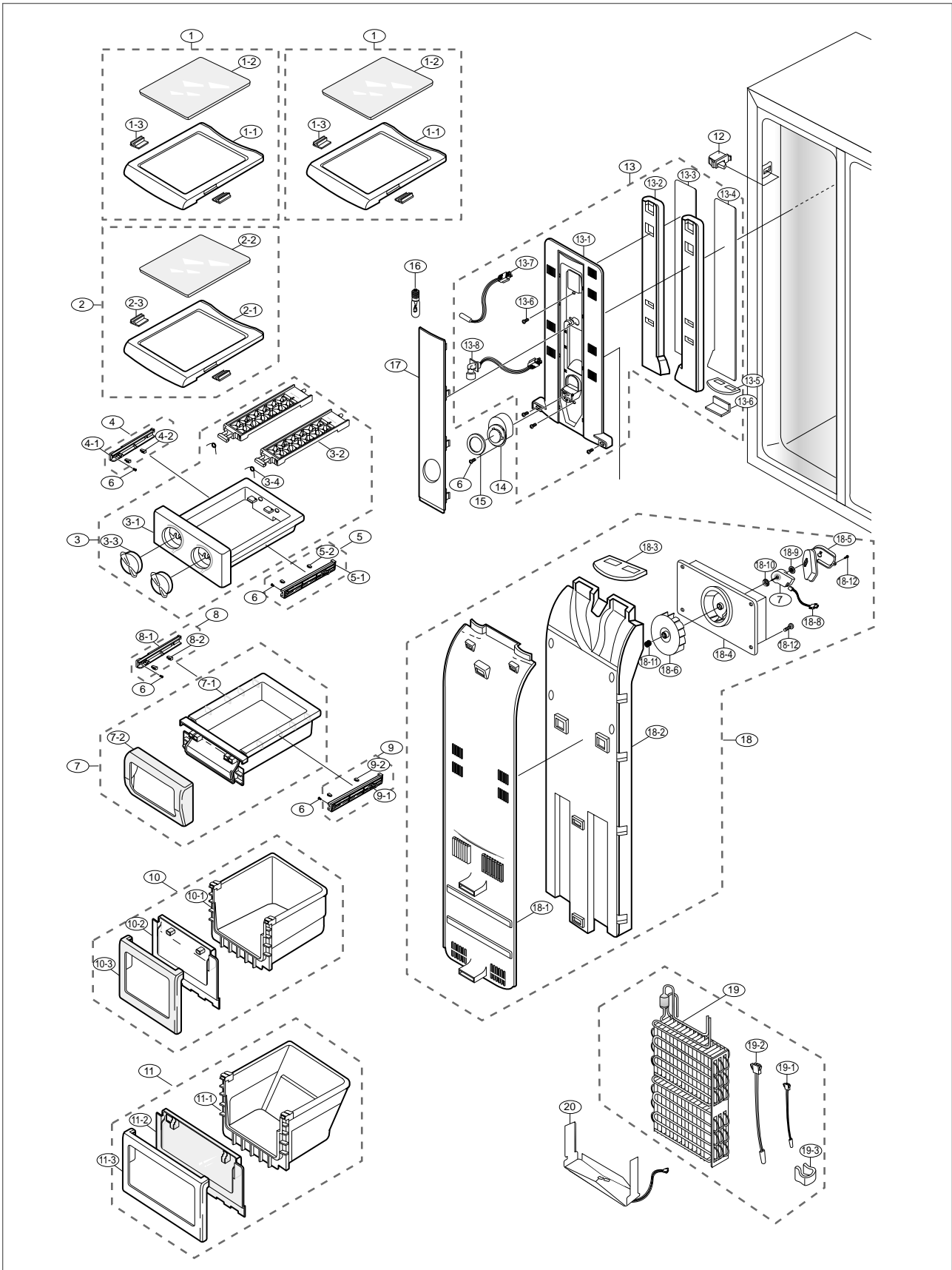


# 12 . Illustrated Parts Catalog.

## 12-1) Freezer Room Exploded View



## Illustrated Parts Catalog.

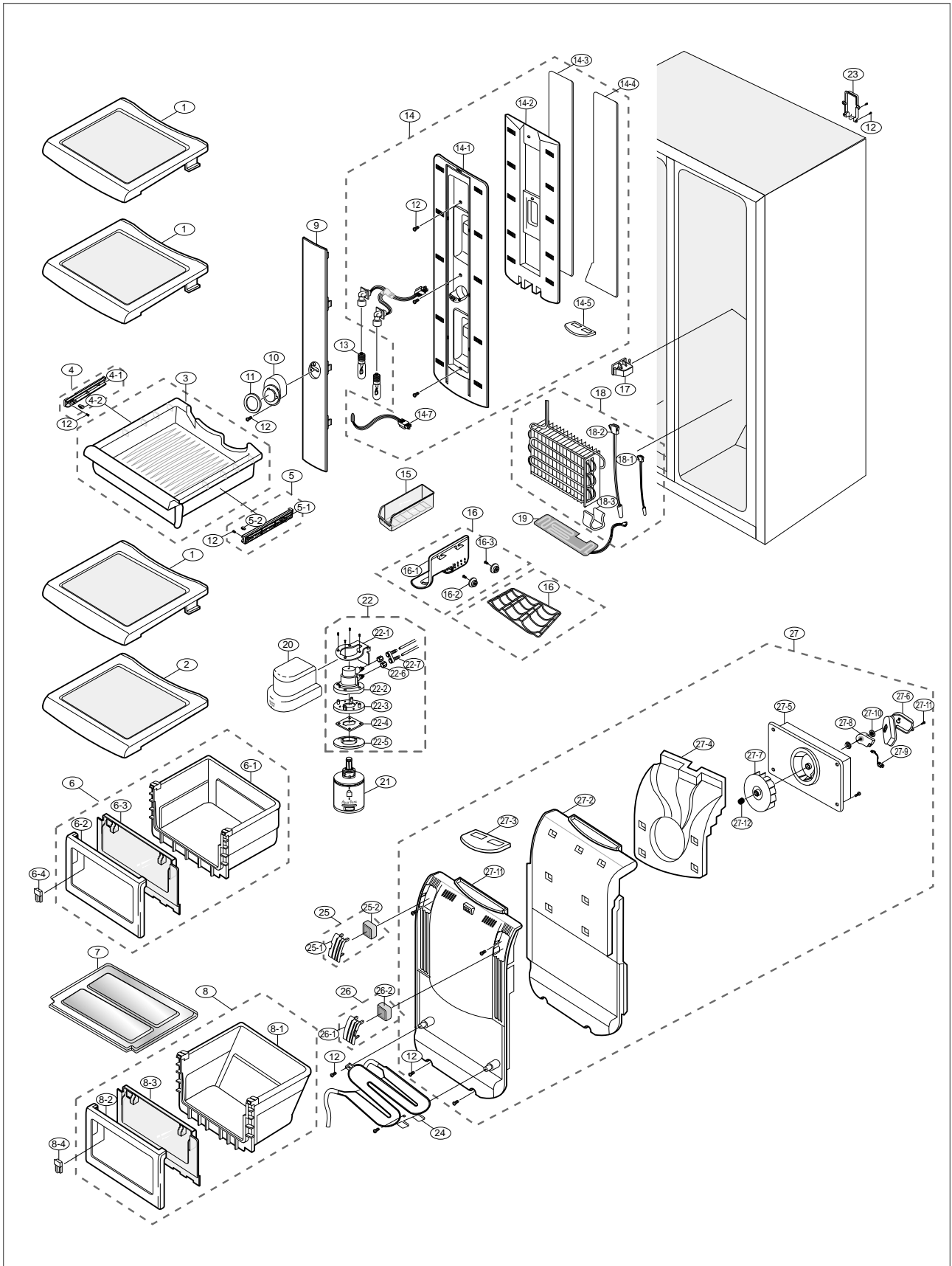
### ■ Parts List of Freezer

| NO   | CODE-NO     | PART NAME                | Spec                    | Quantity | Remark |
|------|-------------|--------------------------|-------------------------|----------|--------|
| 1    | DA67-00180A | SHELF-FRE ASSY           | GLASS-SHELF             | 1        |        |
| 1-1  | DA67-00175A | SHELF-FRE                | HIPS                    | 1        |        |
| 1-2  | DA67-00177B | SHELF GLASS              | GLASS                   | 1        |        |
| 1-3  | DA64-00090A | TRIM-SHELF               | PVC                     | 2        |        |
| 2    | DA67-00181A | SHELF-FRE ASSY           | GLASS-SHELF             | 1        |        |
| 2-1  | DA67-00146A | SHELF-FRE                | HIPS                    | 1        |        |
| 2-2  | DA67-00177C | SHELF GLASS              | GLASS                   | 1        |        |
| 2-3  | DA64-00090A | TRIM-SHELF               | PVC                     | 2        |        |
| 3    | DA66-00047A | TRAY-ICE ASSY            |                         | 1        |        |
| 3-1  | DA71-00059A | FIXER-TRAY ICE           | HIPS                    | 1        |        |
| 3-2  | DA66-00032A | TRAY-ICE                 | HIPS                    | 2        |        |
| 3-3  | DA64-00084A | KNOB-TRAY ICE            | HIPS                    | 2        |        |
| 3-4  | DA61-20136A | SPRING ETC-ICE MAKER     | STS304 , P110           | 2        |        |
| 4    | DA97-01292A | ASSY RAIL-BASKET,L       | HIPS                    | 2        |        |
| 4-1  | DA61-00044B | RAIL-BASKET,L            | HIPS                    | 1        |        |
| 4-2  | DA63-00202A | GROMMET-RAIL             | NY-6                    | 1        |        |
| 5    | DA97-01291A | ASSY RAIL-BASKET,R       | HIPS                    | 2        |        |
| 5-1  | DA61-00045B | RAIL-BASKET,R            | HIPS                    | 1        |        |
| 5-2  | DA63-00202A | GROMMET-RAIL             | NY-6                    | 1        |        |
| 6    | 6002-000215 | SCREW-TAPPING            | TH,+1,M4.0,L16,ZPC(YEL) |          |        |
| 7    | DA67-00186A | CASE-ICE CUBE ASSY       | HIPS                    | 1        |        |
| 7-1  | DA67-00155A | CASE-TRAY ICE            | GPPS                    | 1        |        |
| 7-2  | DA63-00179A | COVER-TRAY               | HIPS                    | 1        |        |
| 8    | DA97-01247A | ASSY RAIL LOW,L          | HIPS                    | 1        |        |
| 8-1  | DA61-60179A | RAIL-LOW                 | GPPS                    | 1        |        |
| 8-2  | DA63-40256B | GROMMET-RAIL             | NY-6                    | 1        |        |
| 9    | DA97-01248A | ASSY RAIL LOW,R          | HIPS                    | 1        |        |
| 9-1  | DA61-60180A | RAIL-LOW                 | HIPS                    | 1        |        |
| 9-2  | DA63-40256B | GROMMET-RAIL             | NY-6                    | 1        |        |
| 10   | DA67-00182C | CASE-BASKET UPP ASSY     |                         | 1        |        |
| 10-1 | DA67-00150A | CASE-BASKET              | PP                      | 1        |        |
| 10-2 | DA63-00174C | COVER-FRONT FRE,B        | GPPS                    | 1        |        |
| 10-3 | DA63-00170A | COVER-FRONT              | HIPS                    | 1        |        |
| 11   | DA67-00183C | CASE-BASKET LOW ASSY     |                         | 1        |        |
| 11-1 | DA67-00151A | CASE-BASKET              | PP                      | 1        |        |
| 11-2 | DA63-00174C | COVER-FRONT FRE,B        | GPPS                    | 1        |        |
| 11-3 | DA63-00170A | COVER-FRONT              | HIPS                    | 1        |        |
| 12   | DA34-10121A | SWITCH-DOOR              | PA6                     | 1        |        |
| 13   | DA97-00101J | ASSY COVER-MULTI FRE     |                         | 1        |        |
| 13-1 | DA63-00363A | COVER EVAP-FRE,FRONT UPP | UPP PP                  | 1        |        |
| 13-2 | DA72-00245A | INSULATION DUCT-FRE,UPP  | FOAM-PS                 | 1        |        |
| 13-3 | DA72-00158F | SEAL EVAP-FRONT FRE,L    | T2.0                    | 1        |        |
| 13-4 | DA72-00159E | SEAL EVAP-FRONT,FRE R    | T2.0                    | 1        |        |
| 13-5 | DA62-00219A | SEAL-AIR FRE,UPP         | OJC-3000 , T7           | 1        |        |
| 13-6 | DA70-00215B | PLATE-INS,DUCT           | RD-PVC , T1.2           | 2        |        |
| 13-7 | DA32-10105H | SENSOR-ASSY              | 502AT, -10~35 , 5V      | 1        |        |
| 14   | DA63-00178A | COVER-SENSOR             | GPPS                    | 2        |        |
| 15   | DA63-00162B | COVER SENSOR-B           | ABS , PNC2              | 2        |        |
| 16   | 4713-001132 | LAMP-INCANDESCENT        | 240V , 30W              | 3        |        |



# 12 . Illustrated Parts Catalog.

## 12-2) Refrigerator Room Exploded View (RS21N, RS21H, RS21D, RS21F, RS23N, RS23H, RS23D, RS23F)



## Illustrated Parts Catalog.

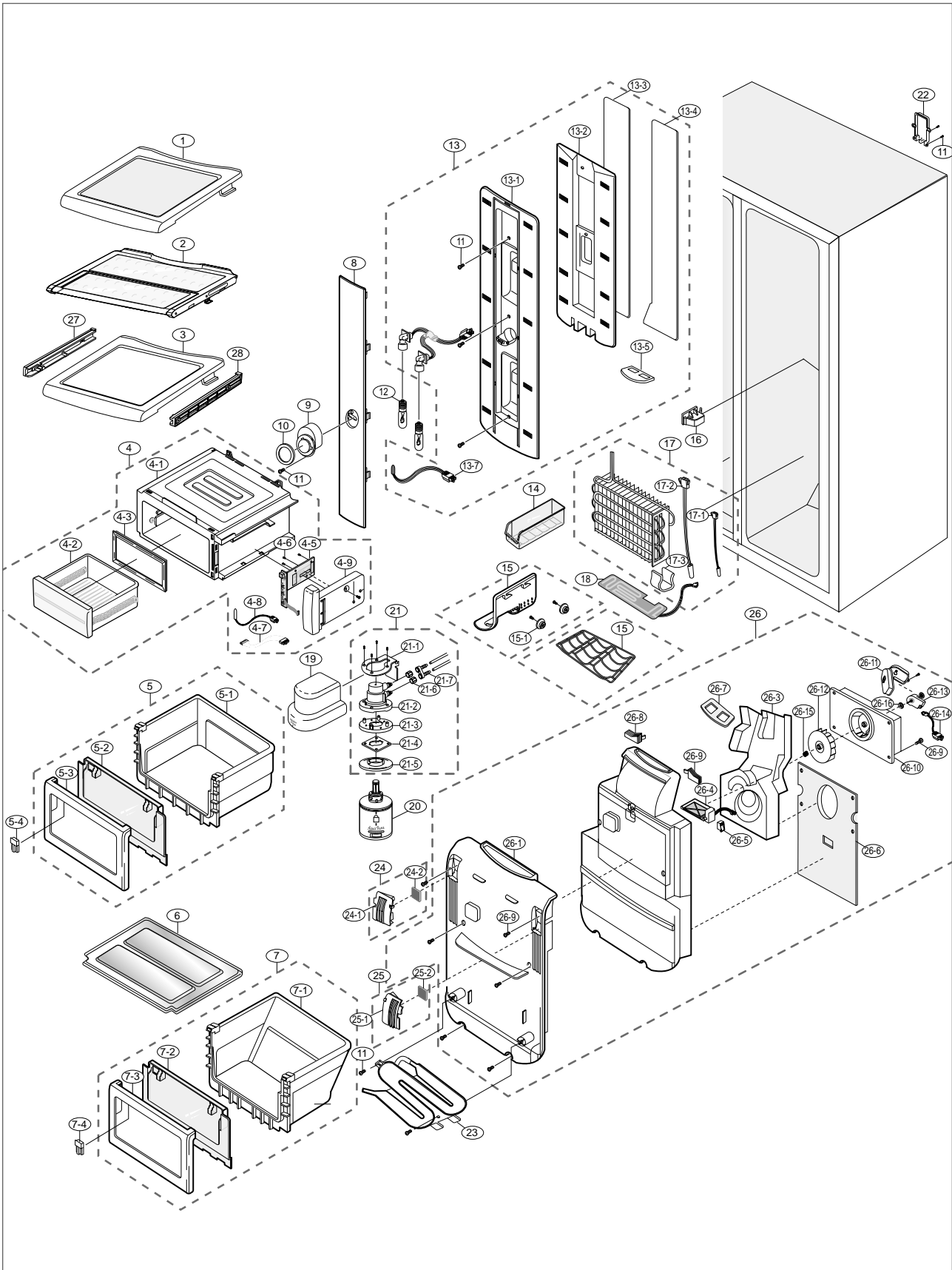
### ■ Parts List of Refrigerator

| NO   | CODE-NO     | PART NAME             | Spec                         | Quantity | Remark |
|------|-------------|-----------------------|------------------------------|----------|--------|
| 1    | DA67-00149A | SHELF-REF UPP         | GLASS                        | 1        |        |
| 2    | DA67-00148B | SHELF REF-LOW         | GLASS                        | 1        |        |
| 3    | DA66-00038A | TRAY-CHIL ROOM        | GPPS                         | 1        |        |
| 4    | DA97-01247A | ASSY RAIL LOW,L       | HIPS                         | 1        |        |
| 4-1  | DA61-60179A | RAIL-LOW              | HIPS                         | 1        |        |
| 4-2  | DA63-40256B | GROMMET-RAIL          | NY-6                         | 1        |        |
| 5    | DA97-01248A | ASSY RAIL LOW,R       | HIPS                         | 1        |        |
| 5-1  | DA61-60180A | RAIL-LOW              | HIPS                         | 1        |        |
| 5-2  | DA63-40256B | GROMMET-RAIL          | NY-6                         | 1        |        |
| 6    | DA67-00184C | CASE-VEG UPP ASSY     | HIPS                         | 1        |        |
| 6-1  | DA63-00175A | COVER-FRONT           | HIPS                         | 1        |        |
| 6-2  | DA63-00177C | COVER-FRONT REF,B     | GPPS                         | 1        |        |
| 6-3  | DA67-00152A | CASE-VEG              | PP                           | 1        |        |
| 6-4  | DA64-00085A | KNOB-MOIS CONT        | ABS                          | 1        |        |
| 7    | DA63-10942B | COVER-VEG,LOW         | HIPS                         | 2        |        |
| 8    | DA67-00185C | CASE-VEG LOW ASSY     | HIPS                         | 1        |        |
| 8-1  | DA63-00175A | COVER-FRONT           | HIPS                         | 1        |        |
| 8-2  | DA63-00177C | COVER-FRONT REF,B     | GPPS                         | 1        |        |
| 8-3  | DA67-00153A | CASE-VEG              | PP                           | 1        |        |
| 8-4  | DA64-00085A | KNOB-MOIS CONT        | ABS                          | 1        |        |
| 9    | DA63-01638A | COVER-LAMP REF        | PP                           | 1        |        |
| 10   | DA63-00178A | COVER-SENSOR          | GPPS                         | 2        |        |
| 11   | DA63-00162B | COVER SENSOR-B        | ABS , PNC2                   | 2        |        |
| 12   | 6002-000215 | SCREW-TAPPING         | TH,+,1,M4.0,L16,ZPC(YEL)     | 15       |        |
| 13   | 4713-001132 | LAMP-INCANDESCENT     | 240V , 30W                   | 3        |        |
| 14   | DA97-01420A | ASSY COVER-MULTI REF  |                              | 1        |        |
| 14-1 | DA63-00158A | COVER-MULTI           | PP                           | 1        |        |
| 14-2 | DA72-00144A | INSULATION            | FOAM-PS                      | 1        |        |
| 14-3 | DA62-00566A | SEAL-MULTI REAR,L     | T2.0                         | 1        |        |
| 14-4 | DA62-00566B | SEAL-MULTI REAR,R     | T2.0                         | 1        |        |
| 14-5 | DA62-00587A | SEAL-MULTI AL,UPP     | FOAM-PE + AL50um             | 1        |        |
| 14-6 | DA47-00025H | LAMP HOLDER           | E 14,250V,1A,370,NTR,PBT 5VA | 1        |        |
| 14-7 | DA32-10105H | SENSOR-ASSY           | 502AT,K-PJT,-10~35,5V,5KOHM  | 1        |        |
| 15   | DA67-40250E | TRAY-UTILITY          | GPPS                         | 1        |        |
| 16   | DA67-00711A | SHELF WIRE-WINE,RACK  | MSWR10                       | 1        |        |
| 16   | DA67-00145A | SHELF-WINE            | HIPS                         |          |        |
| 16-1 | DA71-20252A | FIXER-GROMMET DOOR    | ABS                          | 2        |        |
| 17   | DA34-10110B | SWITCH-DOOR           | 125/1.5A                     | 1        |        |
| 18   | DA96-00013H | ASSY EVAP-REF         | 230V , 110W                  | 1        |        |
| 18-1 | DA32-00006B | SENSOR ASSY           | PX-41C RD SEN,A TOP,-10°C    | 1        |        |
| 18-2 | DA47-10148J | THERMO FUSE-ASSY      | SW-102T,250V                 | 1        |        |
| 18-3 | DA61-00453A | FIXER-SENSOR          | PP                           | 1        |        |
| 19   | DA47-00039B | HEATER-DRAIN ASSY,REF | 240V                         | 1        |        |
| 19-1 | DA47-00038B | HEATER-DRAIN,REF      | 240V                         | 1        |        |
| 19-2 | DA70-00231A | PLATE-DRAIN,REF       | SBHG1 , T0.6                 | 1        |        |
| 20   | DA97-00724A | ASSY-COVER FILTER     | ABS                          | 1        |        |
| 21   | DA29-00003A | FILTER-WATER ASS'Y    |                              | 1        |        |
| 22   | DA97-00725C | ASSY CASE-FILTER      | A-TOP,EXP,INSERT-FILTER      | 1        |        |
| 23   | DA63-00586A | COVER-TUBE FILTER     | PP                           | 1        |        |



# 12 . Illustrated Parts Catalog.

## 12-3) Refrigerator Room Exploded View (RS21J, RS21K, RS23J, RS23K)



## Illustrated Parts Catalog.

### ■ Parts List of Refrigerator

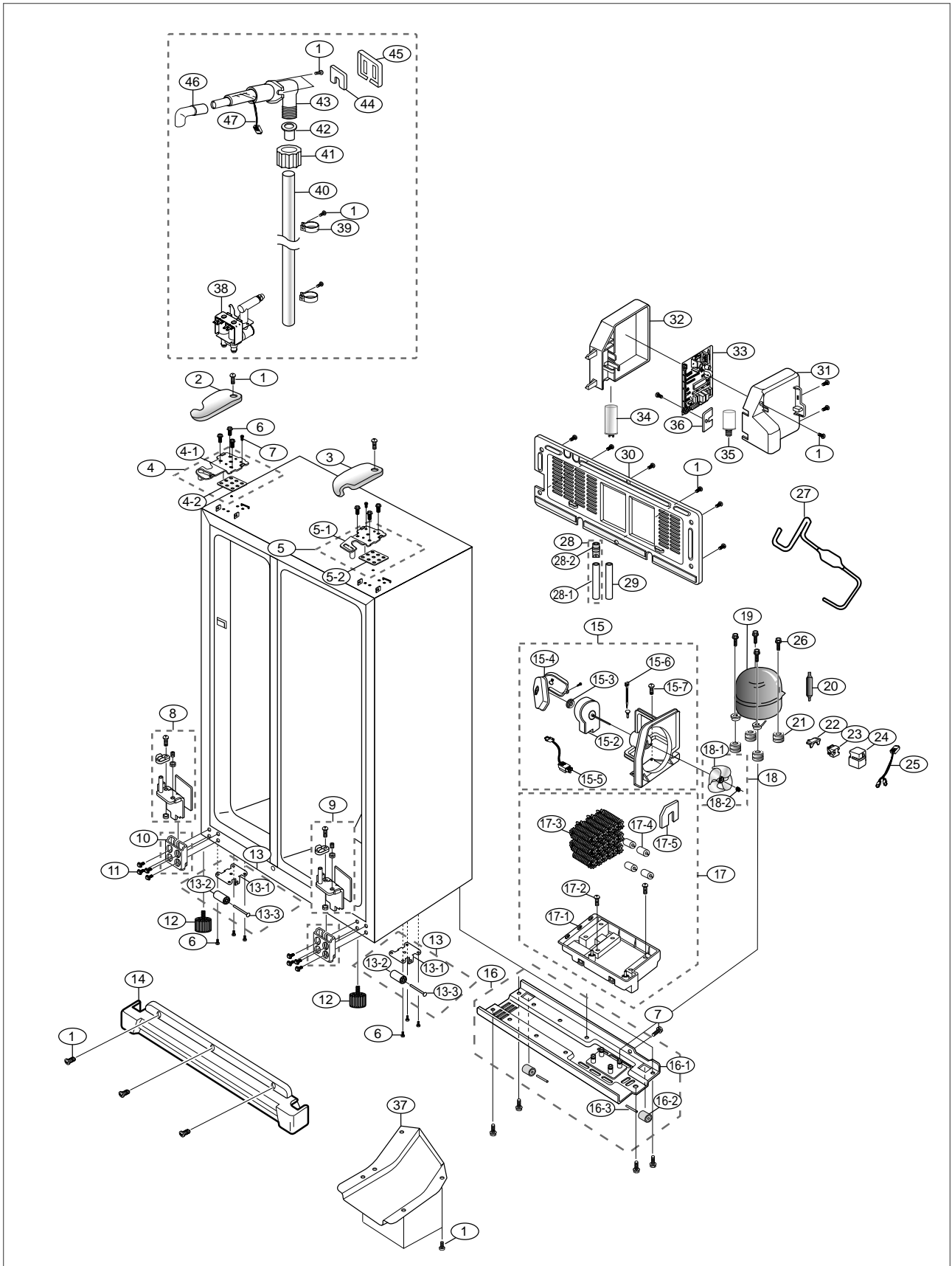
| NO   | CODE-NO     | PART NAME             | Spec                         | Quantity | Remark |
|------|-------------|-----------------------|------------------------------|----------|--------|
| 1    | DA67-00149A | SHELF-REF UPP         | GLASS                        | 1        |        |
| 2    | DA97-00199L | ASSY SHELF-FOLD       | GLASS                        | 1        |        |
| 3    | DA97-01454A | ASSY SHELF REF-LOW    | HIPS                         | 1        |        |
| 4    | DA97-01413A | ASSY CASE-CONVERTIBLE | CONVERTIBLE                  | 1        |        |
| 4-1  | DA97-01412A | ASSY CASE-            | SUB CONVERTIBLE              | 1        |        |
| 4-2  | DA97-01411A | CONVERTIBLE,          | CONVERTIBLE                  | 1        |        |
| 4-3  | DA63-01783A | ASSY TRAY-CONVERTIBLE | SF-PVC                       | 1        |        |
| 4-4  | DA61-01207A | GASKET-CONVERTIBLE    | ABS-SCRAP                    | 1        |        |
| 4-5  | DA41-00108A | CASE-CONTROL CONV     | CONVERTIBLE                  | 1        |        |
| 4-6  | 6002-000462 | PBA SUB               | PH,+2,M3.0,L10,ZPC(YEL),M    | 5        |        |
| 4-7  | DA39-00215A | SCREW-TAPPING         |                              | 1        |        |
| 4-8  | DA32-10109X | WIRE HARNESS          | 5V , CONVERTIBLE             | 1        |        |
| 4-9  | 6009-001293 | SENSOR ASSY           | STS304,-,PWH,+M4,L15.5       | 2        |        |
| 5    | DA67-00184C | SCREW-SPECIAL         |                              | 1        |        |
| 5-1  | DA63-00175A | CASE-VEG UPP ASSY     | HIPS                         | 1        |        |
| 5-2  | DA63-00177C | COVER-FRONT           | GPPS                         | 1        |        |
| 5-2  | DA67-00152A | COVER-FRONT REF,B     | PP                           | 1        |        |
| 5-4  | DA64-00085A | CASE-VEG              | ABS                          | 1        |        |
| 6    | DA63-10942B | KNOB-MOIS CONT        | HIPS                         | 2        |        |
| 7    | DA67-00185C | COVER-VEG,LOW         | GPPS                         | 1        |        |
| 7-1  | DA63-00175A | CASE-VEG LOW ASSY     | PP                           | 1        |        |
| 7-2  | DA63-00177C | COVER-FRONT           | ABS                          | 1        |        |
| 7-3  | DA67-00153A | COVER-FRONT REF,B     | PP                           | 1        |        |
| 7-4  | DA64-00085A | CASE-VEG              | ABS                          | 1        |        |
| 8    | DA63-01638A | KNOB-MOIS CONT        | PP                           | 1        |        |
| 9    | DA63-00178A | COVER-LAMP REF        | GPPS                         | 2        |        |
| 10   | DA63-00162B | COVER-SENSOR          | ABS , PNC2                   | 2        |        |
| 11   | 6002-000215 | COVER SENSOR-B        | TH,+1,M4.0,L16,ZPC(YEL)      | 15       |        |
| 12   | 4713-001132 | SCREW-TAPPING         | 240V , 30W                   | 3        |        |
| 13   | DA97-01420A | LAMP-INCANDESCENT     |                              | 1        |        |
| 13-1 | DA63-00158A | ASSY COVER-MULTI REF  | PP                           | 1        |        |
| 13-2 | DA72-00144A | COVER-MULTI           | FOAM-PE                      | 1        |        |
| 13-3 | DA62-00566A | INSULATION            | T2.0                         | 1        |        |
| 13-4 | DA62-00566B | SEAL-MULTI REAR,L     | T2.0                         | 1        |        |
| 13-5 | DA62-00587A | SEAL-MULTI REAR,R     | POAM-PE                      | 1        |        |
| 13-6 | DA47-00025H | SEAL-MULTI AL,UPP     | E 14,250V,1A,370,NTR,PBT 5VA | 1        |        |
| 13-7 | DA32-10105H | LAMP HOLDER           | 502AT,K-PJT,-10~35,5V,5KOHM  | 1        |        |
| 14   | DA67-40250E | SENSOR-ASSY           | GPPS                         | 1        |        |
| 15   | DA67-00711A | TRAY-UTILITY          | MSWR10                       | 1        |        |
| 15   | DA67-00145A | SHELF WIRE-WINE,RACK  | HIPS                         |          |        |
| 15-1 | DA71-20252A | SHELF-WINE            | ABS                          | 2        |        |
| 16   | DA34-10110B | FIXER-GROMMET DOOR    | -,125/1.5A.25,-,-,WHT,-,-    | 1        |        |
| 17   | DA96-00013H | SWITCH-DOOR           | 230V , 110W                  | 1        |        |
| 17-1 | DA32-00006B | ASSY EVAP-REF         | PX-41C RD SEN , -10°C ~      | 1        |        |
| 17-2 | DA47-10148J | SENSOR ASSY           | SW-102T,250V                 | 1        |        |
| 17-3 | DA61-00453A | THERMO FUSE-ASSY      | PP                           | 1        |        |
| 18   | DA47-00039B | FIXER-SENSOR          | 240V                         | 1        |        |
| 18-1 | DA47-00038B | HEATER-DRAIN ASSY,REF | 240V                         | 1        |        |
| 18-2 | DA70-00231A | HEATER-DRAIN,REF      | SBHG1 , T0.6                 | 1        |        |





# 12 . Illustrated Parts Catalog.

## 12-4) Unit Exploded View (RS21N, RS21H, RS21D, RS21F, RS23N, RS23H, RS23D, RS23F)



## Illustrated Parts Catalog.

### ■ Parts List of Unit Exploded View

| NO   | CODE-NO     | PART NAME                  | Spec                         | Quantity | Remark |
|------|-------------|----------------------------|------------------------------|----------|--------|
| 1    | 6002-000213 | SCREW-TAPPING              | TH,+,1,M4,L12,ZPC(YEL)       | 12       |        |
| 2    | DA63-01379B | COVER HINGE-UPP,L          | ABS                          | 1        |        |
| 3    | DA63-01380B | COVER HINGE-UPP,R          | ABS                          | 1        |        |
| 4    | DA97-00585B | ASSY HINGE-UPP,L           |                              | 1        |        |
| 4-1  | DA61-00051E | HINGE-UPP,L                | SHP1 , T3.0                  | 1        |        |
| 4-2  | DA97-01497A | ASSY-SHIM HINGE UPP        | RD-PVC                       | 1        |        |
| 5    | DA97-00586B | ASSY HINGE-UPP,R           |                              | 1        |        |
| 5-1  | DA61-00052G | HINGE-UPP,R                | SHP1 , T3.0                  | 1        |        |
| 5-2  | DA97-01497A | ASSY-SHIM HINGE UPP        | RD-PVC                       | 1        |        |
| 6    | DA60-10124A | SCREW-TAP TITE             | M6 ,L16,HH,ZPC2              | 6        |        |
| 7    | 6002-000215 | SCREW-TAPPING              | TH,+,1,M4.0,L16,ZPC(YEL)     | 2        |        |
| 8    | DA97-00165G | ASSY HINGE-LOW,L           | T4.5 , SHP1                  | 1        |        |
| 8-1  | 6003-001435 | SCREW-TAPTITE              | M5,L12.7,ZPC(YEL)            | 1        |        |
| 8-2  | 6011-001442 | BOLT-SOCKET                | M8,L15,ZPC(BLK),SCM435       | 1        |        |
| 8-3  | 6021-001125 | NUT-HEXAGON                | 3,M8, P1.25,ZPC(BLK),SWRCH10 | 1        |        |
| 8-4  | DA61-00096J | HINGE-LOW,L                | SHP1 , SM45                  | 1        |        |
| 8-5  | DA66-90113B | CAM HINGE-RISER,UPP        | NY-66(2110R)                 | 1        |        |
| 8-6  | DA97-01494A | ASSY-SHIM HINGE LOW        | T1.5 , RD-PVC                | 1        |        |
| 9    | DA97-00166E | ASSY HINGE-LOW,R           | T4.5 , SHP1                  | 1        |        |
| 9-1  | 6003-001435 | SCREW-TAPTITE              | M5,L12.7,ZPC(YEL)            | 1        |        |
| 9-2  | 6011-001442 | BOLT-SOCKET                | M8,L15,ZPC(BLK),SCM435       | 1        |        |
| 9-3  | 6021-001125 | NUT-HEXAGON                | 3,M8, P1.25,ZPC(BLK),SWRCH10 | 1        |        |
| 9-4  | DA61-00095G | HINGE-LOW, R               | SHP1 , SM45                  | 1        |        |
| 9-5  | DA66-90113B | CAM HINGE-RISER,UPP        | NY-66(2110R)                 | 1        |        |
| 9-6  | DA97-01494A | ASSY-SHIM HINGE LOW        | T1.5 , RD-PVC                | 1        |        |
| 10   | DA61-00317A | BRACKET-HINGE,LOW          | SHP1                         | 2        |        |
| 11   | 6009-001255 | SCREW-HEX                  | SWRCH18A,-,HEX-PLANGE,HEX,   | M6,L 8   |        |
| 12   | DA61-30102C | FOOT-FRONT                 | PP                           | 2        |        |
| 13   | DA61-00056A | CASTER-FRONT ASSY          | SCP1                         | 2        |        |
| 13-1 | DA60-90124A | RIVET                      | MSWR10,OD6.0,L56,ZPC3        | 1        |        |
| 13-2 | DA61-40115A | CASTER-FRONT               | NY-66                        | 1        |        |
| 13-3 | DA71-00064A | REINF-CASTER-FRONT         | SCP1 , T2.6                  | 1        |        |
| 14   | DA63-00189B | COVER-LEG-FRONT            | HIPP                         | 1        |        |
| 15   | DA97-01283A | ASSY SUPPORT-CIRCUIT MOTOR | MOTOR                        | 1        |        |
| 15-1 | DA61-00415A | SUPPORT-CIRCUITE MOTOR     | ABS SCRAP                    | 1        |        |
| 15-2 | DA31-00020H | MOTOR DC-BLDC              | DRCP3030LA , 0.259A          | 1        |        |
| 15-3 | DA63-01146A | GROMMET-MOTOR              | NBR                          | 2        |        |
| 15-4 | DA63-00713A | COVER-MOTOR                | PP                           | 1        |        |
| 15-5 | DA96-00042A | ASSY-HARNESS COMP          | 350mm                        | 1        |        |
| 15-6 | 6501-000122 | CABLE TIE                  | DACT-100,-,W2.5,L101.6,NTR   | 1        |        |
| 15-7 | 6002-000480 | SCREW-TAPPING              | M4,L10,ZPC(YEL)              | 1        |        |
| 16   | DA97-00555B | ASSY CHASSIS-COMP          |                              | 1        |        |
| 16-1 | DA71-00058A | CHASSIS-COMP               | SBHG1 , T1.4                 | 1        |        |
| 16-2 | DA61-40126B | CASTER-REAR                | PP                           | 2        |        |
| 16-3 | DA60-90146A | PIN-CASTER                 | MSWR10,OD6.0,L40,ZPC2        | 2        |        |
| 17   | DA97-01285A | ASSY TRAY-DRAIN WATER      |                              | 1        |        |
| 17-1 | DA66-00034A | TRAY-DRAIN WATER           |                              | 1        |        |
| 17-2 | 6009-001252 | SCREW-SPECIAL              | SWRCH18A,-,PH,+,M4.0,L20     | 4        |        |
| 17-3 | DA97-00259E | ASSY PIPE-SPIRAL COND      | SPIRAL                       | 1        |        |

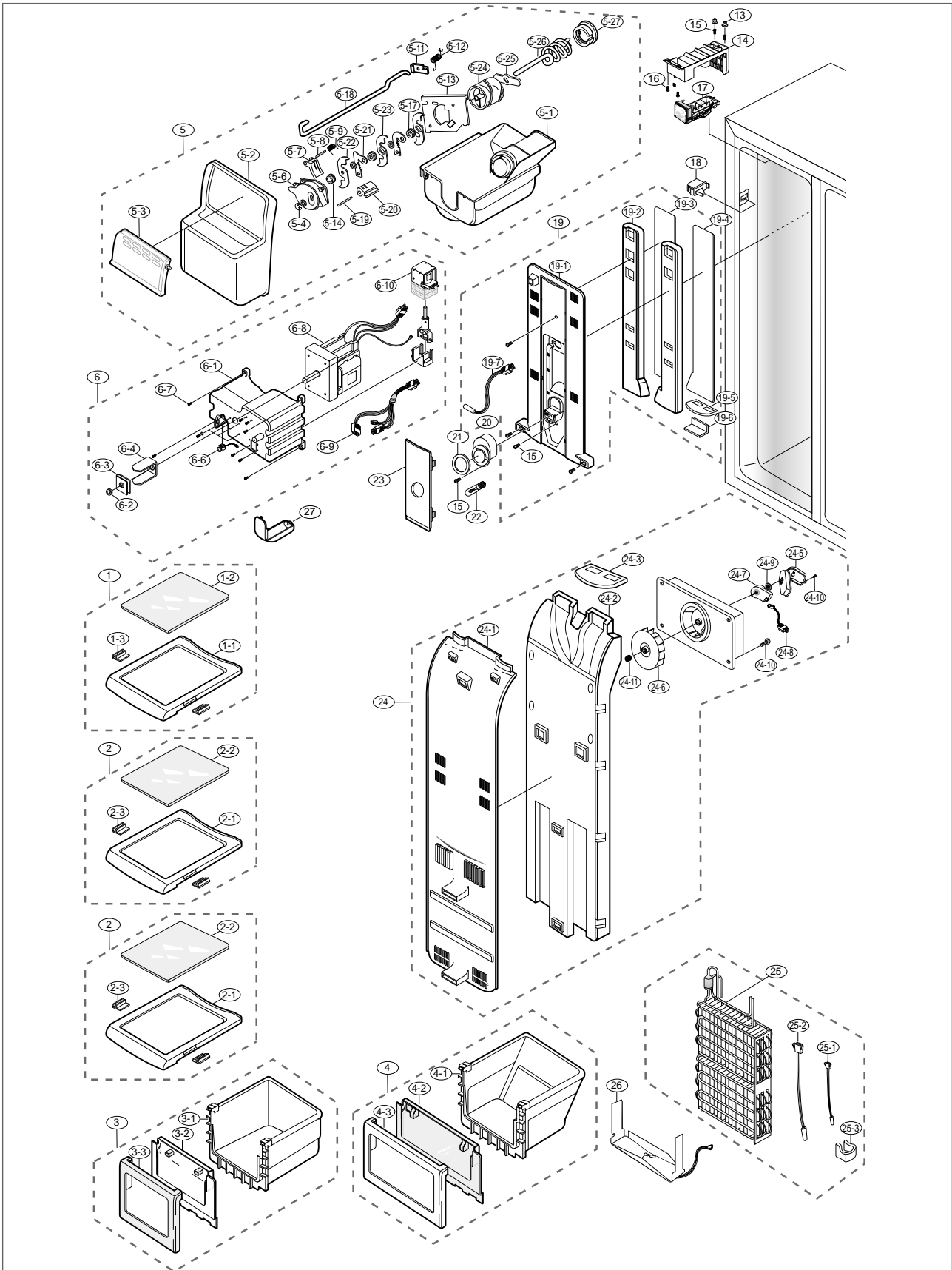
## Illustrated Parts Catalog.

### ■ Parts List of Unit Exploded View

| NO   | CODE-NO        | PART NAME                | Spec                          | Quantity | Remark |
|------|----------------|--------------------------|-------------------------------|----------|--------|
| 17-4 | DA63-40128A    | GROMMET-SUB COND         | NBR                           | 2        |        |
| 17-5 | DA62-00440A    | SEAL-SUB COND            | FOAM-PE, T5.0                 | 1        |        |
| 18   | DA31-00010C    | FAN-ASSY                 | _150                          | 1        |        |
| 18-1 | DA31-00015B    | FAN-TURBO                | ABS                           | 1        |        |
| 18-2 | DA61-20128A    | SPRING ETC-FAN           | STS27, PI7.8, ID1.0           | 1        |        |
| 19   | MK4A5QR1U/E/Ø1 | COMPRESSOR               | 15.31cc,220/240V~50Hz,RSCR    | 1        |        |
| 20   | DA73-30102B    | DRYER-ASSY               | CU,OD18.85,ID2,L102,10.0G     | 1        |        |
| 21   | DA63-40004A    | GROMMET-COMP             | NBR                           | 4        |        |
| 22   | DA34-10003V    | RELAY PROTECTOR O/L      | 4TM265RHBY-53,                | 1        |        |
| 23   | DA35-10013B    | RELAY-PTC                | J531Q35E330M385-2,385V.6A     | 1        |        |
| 24   | DA63-10352A    | COVER-RELAY              | PP                            | 1        |        |
| 25   | DA39-00084B    | WIRE HARNESS COMP        | -,EXP,;,;,COMP,NOTHING,       | 1        |        |
| 26   | DA60-20008A    | BOLT-HEX                 | SM30C                         | 4        |        |
| 27   | DA97-00918A    | ASSY PIPE CONNECT        |                               | 1        |        |
| 28   | DA97-00359A    | ASSY TUBE-DRAIN          | SOFT-PVC, T1.0, L21           | 1        |        |
| 28-1 | DA62-20001R    | TUBE PVC                 | SOFT-PVC, T1.0, L21           | 1        |        |
| 28-2 | DA63-00951C    | GROMMET-DRAIN HOSE       | NBR                           | 1        |        |
| 29   | DA62-20001P    | TUBE PVC                 | SOFT-PVC, T1.0, L21           | 1        |        |
| 30   | DA63-00278E    | COVER COMP-ASSY          | SBHG1, T0.35                  | 1        |        |
| 31   | DA61-00261A    | CASE PCB-PANEL           | ABS                           | 1        |        |
| 32   | DA63-00783A    | COVER PCB-PANEL          | ABS                           | 1        |        |
| 33   | DA41-00185B    | PBA MAIN                 | ET-R600a-,FR-4,1.6T*163*197,D | 1        |        |
| 33   | DA41-00185A    | PBA MAIN                 | ET-R600a-,FR-4,1.6T*163*197,D | 1        |        |
| 33   | DA41-00195A    | PBA MAIN                 | ET-R600a-,FR-4,1.6T*163*197,D | 1        |        |
| 34   | DA27-00002A    | COIL                     | 4,+50%,-30%,38*50             | 1        |        |
| 35   | 2501-001186    | C-OIL                    | 5UF,350V,BK,43X55MM,15        | 1        |        |
| 36   | DA71-00155B    | FIXER-MAIN PCB           | RD-PVC, T1.5                  | 1        |        |
| 37   | DA74-00038C    | DUCT-CABI,C              | ABS SCRAP                     | 1        |        |
| 38   | DA74-40149C    | VALVE WATER-ASSY         | RIV-12A-4                     | 1        |        |
| 40   | DA73-00070V    | PIPE-WATER LINE          | PB(4137), Ø6.35               | 1        |        |
| 41   | DA60-30104A    | NUT-WATER LINE           | NY-6                          | 1        |        |
| 42   | DA71-20208A    | FIXER-VALVE WATER        | NY-6                          | 1        |        |
| 43   | DA73-00134A    | PIPE-WATER FRE,ASSY(SUB) | SUBJAL, Ø1.0                  | 1        |        |
| 44   | DA72-00228C    | SEAL-WATER PIPE          | FOAM-PE, T10, L80             | 1        |        |
| 45   | DA97-00979A    | ASSY COVER-PIPE WATER    | 240V, 7W                      | 1        |        |
| 46   | DA63-01701A    | GROMMET-TUBE WATER,FILL  | IN SILICON                    | 1        |        |
| 47   | DA47-00035A    | HEATER-WATER,PIPE        | 240V, 7W                      | 1        |        |
|      |                |                          |                               |          |        |
|      |                |                          |                               |          |        |
|      |                |                          |                               |          |        |
|      |                |                          |                               |          |        |
|      |                |                          |                               |          |        |
|      |                |                          |                               |          |        |
|      |                |                          |                               |          |        |
|      |                |                          |                               |          |        |
|      |                |                          |                               |          |        |
|      |                |                          |                               |          |        |
|      |                |                          |                               |          |        |
|      |                |                          |                               |          |        |
|      |                |                          |                               |          |        |
|      |                |                          |                               |          |        |
|      |                |                          |                               |          |        |
|      |                |                          |                               |          |        |
|      |                |                          |                               |          |        |
|      |                |                          |                               |          |        |
|      |                |                          |                               |          |        |
|      |                |                          |                               |          |        |
|      |                |                          |                               |          |        |
|      |                |                          |                               |          |        |
|      |                |                          |                               |          |        |

# 12 . Illustrated Parts Catalog.

## 12-5) Freezer Room Exploded View (RS21D, RS21F, RS21J, RS21K, RS23D, RS23F, RS23J, RS23K)



## Illustrated Parts Catalog.

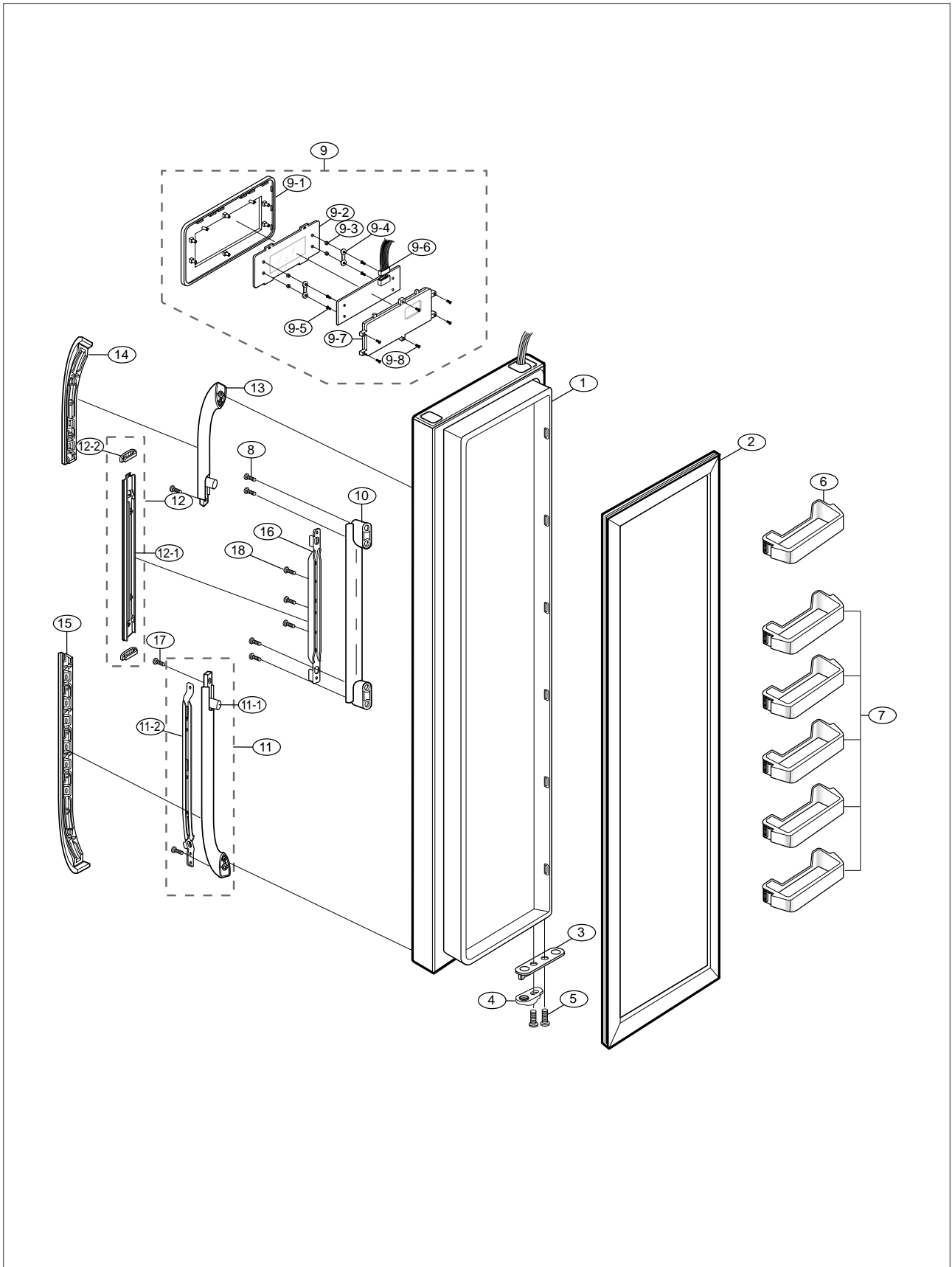
### ■ Part List of Freezer Room

| NO   | CODE-NO     | PART NAME                | Spec                         | Quantity | Remark |
|------|-------------|--------------------------|------------------------------|----------|--------|
| 1    | DA67-00180A | SHELF-FRE ASSY           | GLASS-SHELF                  | 1        |        |
| 1-1  | DA67-00175A | SHELF-FRE                | HIPS                         | 1        |        |
| 1-2  | DA67-00177B | SHELF GLASS              | GLASS                        | 1        |        |
| 1-3  | DA64-00090A | TRIM-SHELF               | PVC                          | 2        |        |
| 2    | DA67-00181A | SHELF-FRE ASSY           | GLASS-SHELF                  | 1        |        |
| 2-1  | DA67-00146A | SHELF-FRE                | HIPS                         | 1        |        |
| 2-2  | DA67-00177C | SHELF GLASS              | GLASS                        | 1        |        |
| 2-3  | DA64-00090A | TRIM-SHELF               | PVC                          | 2        |        |
| 3    | DA67-00182C | CASE-BASKET UPP ASSY     |                              | 1        |        |
| 3-1  | DA67-00150A | CASE-BASKET              | HIPS                         | 1        |        |
| 3-2  | DA63-00174C | COVER-FRONT FRE,B        | HIPS                         | 1        |        |
| 3-3  | DA63-00170A | COVER-FRONT              | HIPS                         | 1        |        |
| 4    | DA67-00183C | CASE-BASKET LOW ASSY     |                              | 1        |        |
| 4-1  | DA67-00151A | CASE-BASKET              | HIPS                         | 1        |        |
| 4-2  | DA63-00174C | COVER-FRONT FRE,B        | HIPS                         | 1        |        |
| 4-3  | DA63-00170A | COVER-FRONT              | HIPS                         | 1        |        |
| 5    | DA59-00136E | CRUSHER ICE ASSY         |                              | 1        |        |
| 5-4  | DA60-40116A | WASHER-PLAIN             | STS4                         | 1        |        |
| 5-2  | DA63-00180A | COVER-ICE BUCKET         | PP                           | 1        |        |
| 5-3  | DA63-00181B | COVER-ICE BUCKET,B       | GPPS                         | 1        |        |
| 5-5  | DA63-10016A | COVER-CRUSHER DISP       | PC                           | 1        |        |
| 5-1  | DA66-00033A | TRAY-ICE                 |                              | 1        |        |
| 6    | DA61-00143C | CASE-AUGER MOTOR,ASSY    |                              | 1        |        |
| 6-1  | DA67-00144B | CASE-AUGUR MOTOR         | ABS SCRAP                    | 1        |        |
| 6-2  | DA61-20140A | SPRING ETC-SOLENOID      | STS304                       | 1        |        |
| 6-3  | DA71-00163A | FIXER-NUT                | STS420-J2 , T1 , CLIP        | 1        |        |
| 6-4  | DA70-20017A | PLATE-D/AUGER DISP       | STS304 , L127XD14.4          | 1        |        |
| 6-5  | DA65-20107A | SADDLE-SOLENOID          | NY-6                         | 1        |        |
| 6-6  | DA47-40112V | LAMP HOLDER              | PBT 5VA , E14                | 1        |        |
| 6-7  | 6001-000033 | SCREW-MACHINE            | TH,+,M4,L10,-,STS304         | 2        |        |
| 6-8  | DA31-10141D | MOTOR GEARD              | ISG-3250SSD,SR-S6586,1.8A,50 | 1        |        |
| 6-9  | DA39-00083A | WIRE HARNESS-SUB         |                              | 1        |        |
| 6-10 | DA74-40151F | VALVE-SOLENOID           |                              | 1        |        |
| 6-11 | DA63-90008A | BUSH-SOLENOID            | POM                          | 1        |        |
| 13   | DA71-20252A | FIXER-GROMMET DOOR       | ABS                          | 2        |        |
| 14   | DA59-30103J | ICE MAKER                | DC12V                        | 1        |        |
| 15   | 6002-000215 | SCREW-TAPPING            | TH,+,1,M4.0,L16,ZPC(YEL)     | 15       |        |
| 16   | 6002-000471 | SCREW-TAPPING            | TH,+,1,M4,L12,PASS,STS304    | 2        |        |
| 17   | DA67-40308A | TRAY-ICE                 | PP , T1.0                    | 1        |        |
| 18   | DA34-10121A | SWITCH-DOOR              | PA6                          | 1        |        |
| 19   | DA97-00101J | ASSY COVER-MULTI FRE     |                              | 1        |        |
| 19-1 | DA63-00363A | COVER EVAP-FRE,FRONT UPP | PP                           | 1        |        |
| 19-2 | DA72-00245A | INSULATION DUCT-FRE,UPP  | FOAM-PS                      | 1        |        |
| 19-3 | DA72-00158F | SEAL EVAP-FRONT FRE,L    | T2.0                         | 1        |        |
| 19-4 | DA72-00159E | SEAL EVAP-FRONT,FRE R    | T2.0                         | 1        |        |
| 19-5 | DA62-00219A | SEAL-AIR FRE,UPP         | OJC-3000 , T7.0              | 1        |        |
| 19-6 | DA70-00215B | PLATE-INS,DUCT           | RD-PVC , T1.2                | 2        |        |
| 19-7 | DA32-10105H | SENSOR-ASSY              | 502AT,K-PJT,-10-35,5V,5KOHM  | 1        |        |
| 20   | DA63-00178A | COVER-SENSOR             | GPPS                         | 2        |        |



# 12 . Illustrated Parts Catalog.

## 12-6) Freezer Room Door Exploded View





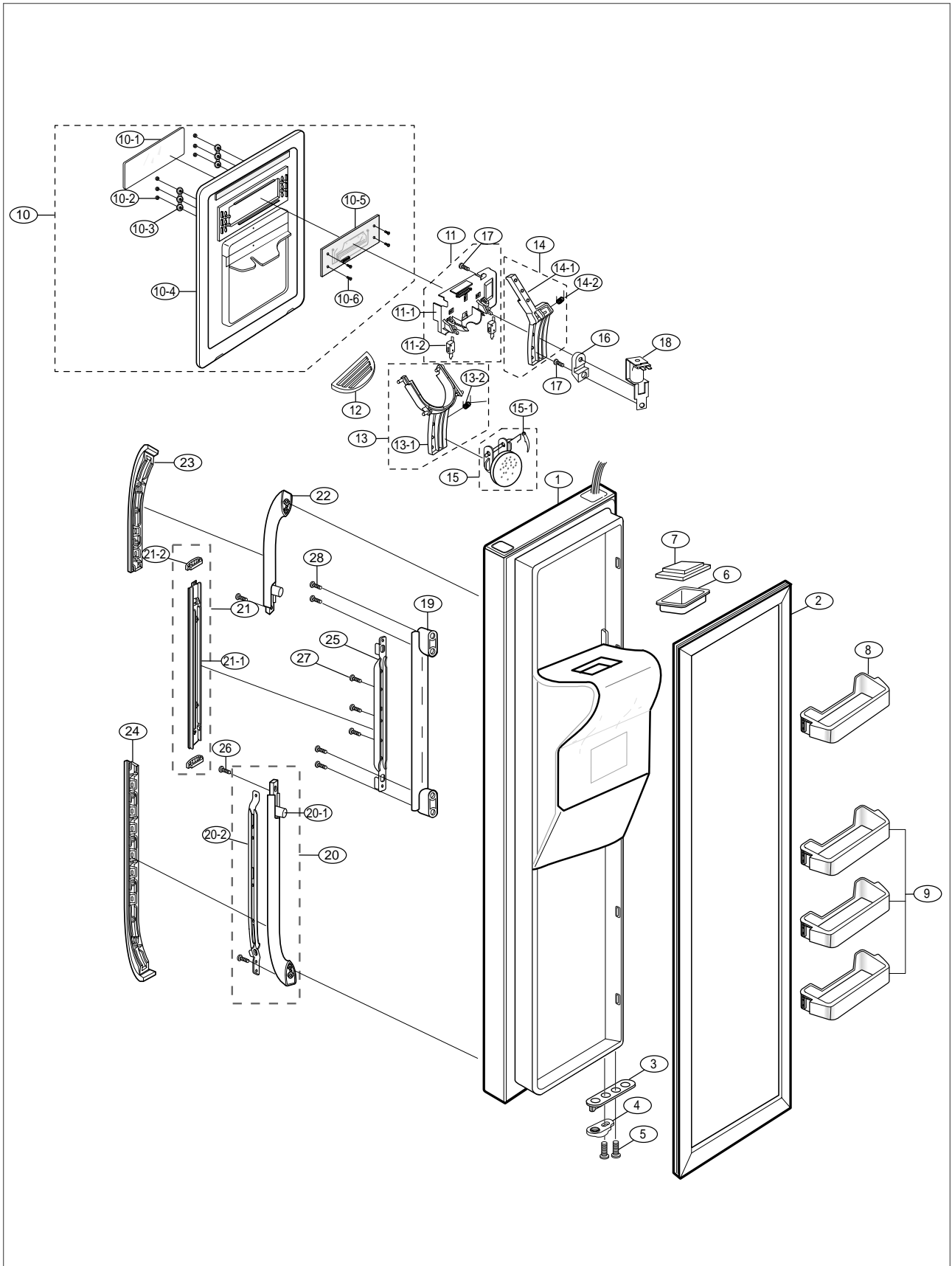
# Illustrated Parts Catalog.

## ■ Part List of Freezer Room Door Exploded View

| NO   | CODE-NO     | PART NAME               | Spec                      | Quantity | Remark |
|------|-------------|-------------------------|---------------------------|----------|--------|
| 1    | -           | ASSY DOOR FOAM FRE      | -                         | 1        |        |
| 2    | DA63-30231K | GASKET DOOR-FRE ASSY    | SF-PVC                    | 1        |        |
| 3    | DA61-00776A | STOPPER DOOR            | SHP1 , T3.0               | 1        |        |
| 4    | DA66-90112C | CAM HINGE-RISER,LOW     | NY-66                     | 1        |        |
| 5    | 6002-000468 | SCREW-TAPPING           | PH,+2S,M5.0,L18,ZPC(YEL)  | 4        |        |
| 6    | DA63-00213C | GUARD-FRE,UPP           | PP                        | 1        |        |
| 7    | DA63-01311A | GUARD BOTTLE-FRE LOW    | PP                        | 5        |        |
| 8    | 6002-000468 | SCREW-TAPPING           | PH,+2S,M5.0,L18,ZPC(YEL)  | 4        |        |
| 9    | DA97-00191S | ASSY-COVER-CONTROL      |                           | 1        |        |
| 9-1  | DA63-00971D | COVER-CONTROL FRONT     | ABS , SNOW-WHITE          | 1        |        |
| 9-2  | DA63-01168C | COVER-CONTROL BASIC     | GPPS                      | 1        |        |
| 9-3  | DA64-00740B | KNOB-TOUCH,B            | ABS , SNOW-WHITE          | 4        |        |
| 9-4  | DA61-00875A | SUPT-KNOB TOUCH,BASIC   | SILICONE                  | 2        |        |
| 9-6  | DA41-00174A | PBA PANEL               | 1.6*190*70                | 1        |        |
| 9-7  | DA63-00970A | COVER-PCB REAR          | ABS , SNOW-WHITE SCRAP    | 1        |        |
| 9-8  | 6002-000466 | SCREW-TAPPING           | PH,+2S,M3.0,L8,ZPC(YEL)   | 4        |        |
| 10   | DA64-00096B | HANDLE BASE-MID         | HIPP , SNOW-WHITE         | 1        |        |
| 11   | DA64-00111B | HANDLE-LOW-ASSY         | ABS , SNOW-WHITE          | 1        |        |
| 11-1 | DA64-00095B | HANDLE BASE-LOW         | HIPP , SNOW-WHITE         | 1        |        |
| 11-2 | DA71-00078A | REINF-HANDLE LOW        | ABS , SNOW-WHITE          | 1        |        |
| 12   | DA64-00209A | HANDLE TRIM-ASSY,MID    | ABS , SNOW-WHITE          | 1        |        |
| 12-1 | DA64-00098B | HANDLE TRIM-MID         | ABS , SNOW-WHITE          | 1        |        |
| 12-2 | DA64-00196A | TRIM-HANDLE CONNECT,MID | SILVER COLOR              | 2        |        |
| 13   | DA64-00097B | HANDLE BASE-UPP         | HIPP , SNOW-WHITE         | 1        |        |
| 14   | DA64-00100E | HANDLE-TRIM UPP         | ABS , SNOW-WHITE          | 1        |        |
| 15   | DA64-00099B | HANDLE TRIM-LOW         | ABS , SNOW-WHITE          | 1        |        |
| 16   | DA71-00077A | REINF-HANDLE-MID        | SBHG1 , T1.4              | 1        |        |
| 17   | 6002-000213 | SCREW-TAPPING           | TH,+1,M4,L12,ZPC(YEL),SWR | 3        |        |
| 18   | 6002-000470 | SCREW-TAPPING           | TH,+1,M4,L10,ZPC,SCRCH18A | 3        |        |
|      |             |                         |                           |          |        |
|      |             |                         |                           |          |        |
|      |             |                         |                           |          |        |
|      |             |                         |                           |          |        |
|      |             |                         |                           |          |        |
|      |             |                         |                           |          |        |
|      |             |                         |                           |          |        |
|      |             |                         |                           |          |        |
|      |             |                         |                           |          |        |
|      |             |                         |                           |          |        |
|      |             |                         |                           |          |        |
|      |             |                         |                           |          |        |
|      |             |                         |                           |          |        |
|      |             |                         |                           |          |        |
|      |             |                         |                           |          |        |
|      |             |                         |                           |          |        |
|      |             |                         |                           |          |        |
|      |             |                         |                           |          |        |
|      |             |                         |                           |          |        |
|      |             |                         |                           |          |        |
|      |             |                         |                           |          |        |
|      |             |                         |                           |          |        |

# 12 . Illustrated Parts Catalog.

## 12-7) Freezer Room Door Exploded View (RS21D, RS21F, RS21J, RS21K, RS23D, RS23F, RS23J, RS23K)



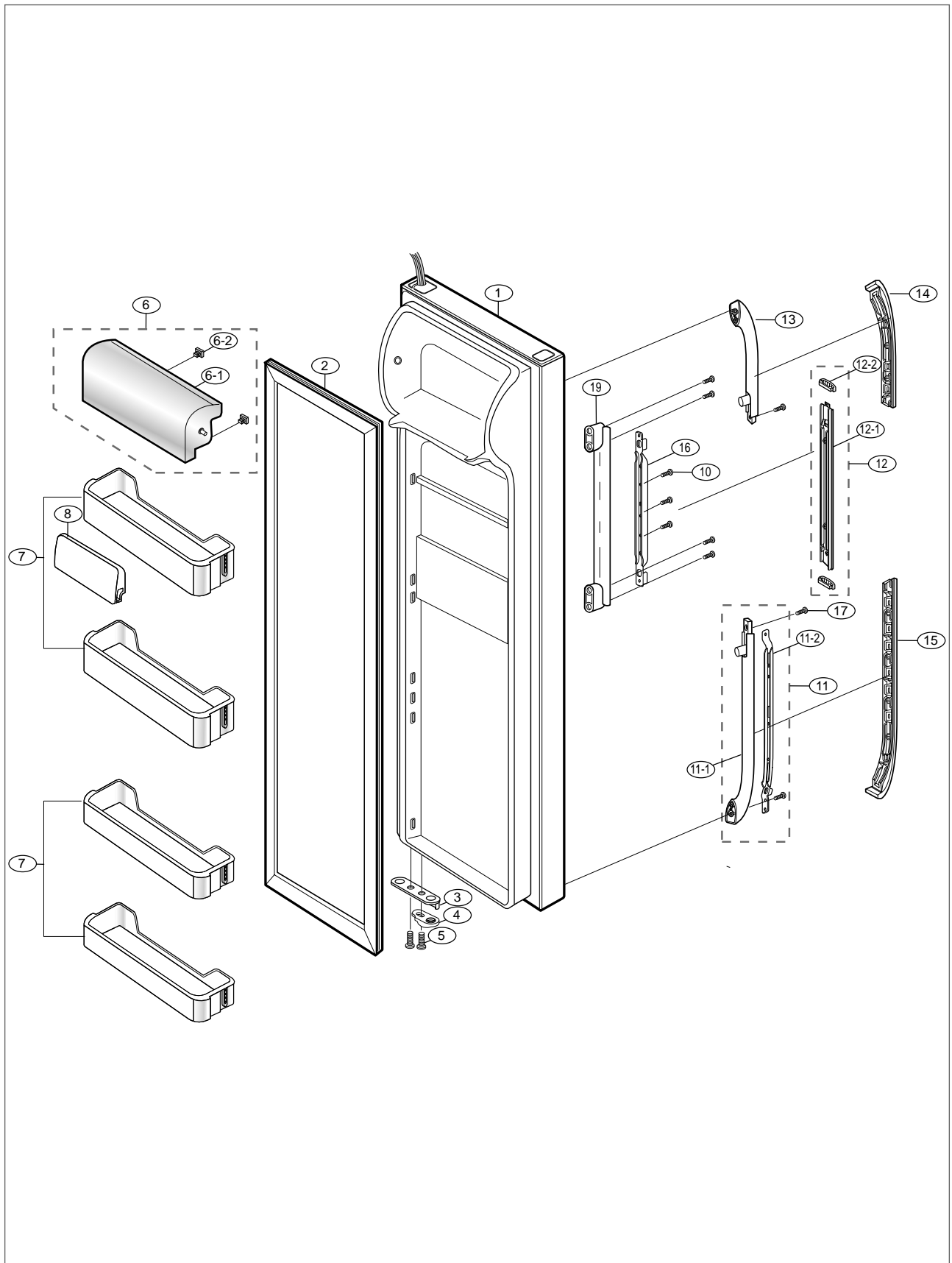
# Illustrated Parts Catalog.

## ■ Part List of Freezer Room Door Exploded View

| NO   | CODE-NO     | PART NAME                      | Spec                        | Quantity | Remark |
|------|-------------|--------------------------------|-----------------------------|----------|--------|
| 1    | -           | ASSY DOOR FOAM FRE             | SNOW WHITE                  | 1        |        |
| 2    | DA63-30231K | GASKET DOOR-FRE ASSY           | SF-PVC                      | 1        |        |
| 3    | DA61-00776A | STOPPER DOOR                   | SHP1,T3.0                   | 1        |        |
| 4    | DA66-90112C | CAM HINGE-RISER,LOW            | NY-66(2110R)                | 1        |        |
| 5    | 6002-000468 | SCREW-TAPPING                  | PH,+2S,M5.0,L18,ZPC(YEL),   | 4        |        |
| 6    | DA67-00163B | CAP-CHUTE,ICE                  | ABS , SNOW-WHITE            | 1        |        |
| 7    | DA72-00262A | CUSHION-GUIDE ICE CHUTE        | SILICON                     | 1        |        |
| 8    | DA63-00213C | GUARD-FRE,UPP                  | HI-PP                       | 1        |        |
| 9    | DA63-01311A | GUARD BOTTLE-FRE LOW           | HI-PP                       | 3        |        |
| 10   | DA97-01345A | ASSY COVER-DISPENSER           | SNOW-WHIT                   | 1        |        |
| 10-1 | DA63-01608A | COVER DISPENSER                | ABS , SNOW-WHITE            | 1        |        |
| 10-2 | DA64-00740B | KNOB-TOUCH                     | ABS , SILVER COLOR          | 6        |        |
| 10-3 | DA61-00874A | SUPPORT-KNOB TOUCH,DISP        | SILICON                     | 2        |        |
| 10-4 | DA63-01169H | COVER-CONTROL DISP             | ABS , SNOW-WHITE            | 1        |        |
| 10-5 | DA41-00173B | PBA PANEL                      | 10mm                        | 1        |        |
| 10-6 | 6002-000466 | SCREW-TAPPING                  | PH,2S,M3.0,L8,ZPC(YEL)      | 4        |        |
| 11   | DA97-01346A | ASSY COVER-PCB,PANEL REAR      | REAR ,SNOW                  | 1        |        |
| 11-1 | DA63-01609A | COVER-PCB PANEL,REAR           | PP,SNOW WHITE               | 1        |        |
| 11-2 | DA34-00011A | SWITCH-MICRO                   | VP533A-OF-5,MICRO,250V,15A, | 2        |        |
| 12   | DA66-00037G | TRAY DISPENSER                 | HIPS,SNOW-WHITE             | 1        |        |
| 13   | DA97-01350A | ASSY LEVER-DISPENSER,ICE       | SNOW-WHITE                  | 1        |        |
| 13-1 | DA66-00236A | LEVER-DISPENSER,ICE            | ABS , SNOW-WHITE            | 1        |        |
| 13-2 | DA61-00088A | SPRING ETC-DISPENSER ICE-LEVER | STS304,                     | 1        |        |
| 14   | DA97-01352A | ASSY LEVER-DISPENSER,WATER     | SNOW-WHITE                  | 1        |        |
| 14-1 | DA66-00237A | LEVER-DISPENSER WATER          | ABS , SNOW-WHITE            | 1        |        |
| 14-2 | DA61-00338A | SPRING ETC-WATER LEVER,DISP    | STS304                      | 1        |        |
| 15   | DA97-00283A | ASSY COVER-ICE ROUTE           | SNOW-WHITE                  | 1        |        |
| 15-1 | DA71-00073A | STOPPER-LEVER DISPENSER        | POM                         | 1        |        |
| 16   | DA61-70234A | SUPPORT-TIME DELAY             | HIPS                        | 1        |        |
| 17   | 6002-000471 | SCREW-TAPPING                  | TH,+1,M4,L12,STS304,        | 1        |        |
| 18   | DA74-40154C | VALVE SOLENOID                 | USD-DPS4                    | 1        |        |
| 19   | DA64-00096B | HANDLE BASE-MID                | HIPP , SNOW-WHITE           | 1        |        |
| 20   | DA64-00111B | HANDLE-LOW,ASSY                | SNOW-WHITE                  | 1        |        |
| 20-1 | DA64-00095B | HANDLE BASE-LOW                | HIPP , SNOW-WHITE           | 1        |        |
| 20-2 | DA71-00078A | REINF-HANDLE,LOW               | SBHG1,T1.4                  | 1        |        |
| 21   | DA64-00209A | HANDLE TRIM-ASSY,MID           | ABS , SNOW-WHITE            | 1        |        |
| 21-1 | DA64-00098B | HANDLE TRIM-MID                | ABS , SNOW-WHITE            | 1        |        |
| 21-2 | DA64-00196A | TRIM-HANDLE CONNECT,MID        | SILVER COLOR                | 2        |        |
| 22   | DA64-00097B | HANDLE-BASE,UPP                | HIPP , SNOW-WHITE           | 1        |        |
| 23   | DA64-00100E | HANDLE-TRIM,UPP                | ABS , SNOW-WHITE            | 1        |        |
| 24   | DA64-00099B | HANDLE-TRIM,LOW                | ABS , SNOW-WHITE            | 1        |        |
| 25   | DA71-00077A | REINF-HANDLE,MID               | SBHG1,T1.4                  | 1        |        |
| 26   | 6002-000213 | SCREW-TAPPING                  | TH,+1,M4,L12,ZPC(YEL),SWR   | 3        |        |
| 27   | 6002-000470 | SCREW-TAPPING                  | TH,+1,M4,L10,ZPC,SCRCH18A   | 3        |        |
| 28   | 6002-000468 | SCREW-TAPPING                  | PH,+2S,M5.0,L18,ZPC(YEL),   | 4        |        |
|      |             |                                |                             |          |        |
|      |             |                                |                             |          |        |
|      |             |                                |                             |          |        |
|      |             |                                |                             |          |        |

# 12 . Illustrated Parts Catalog.

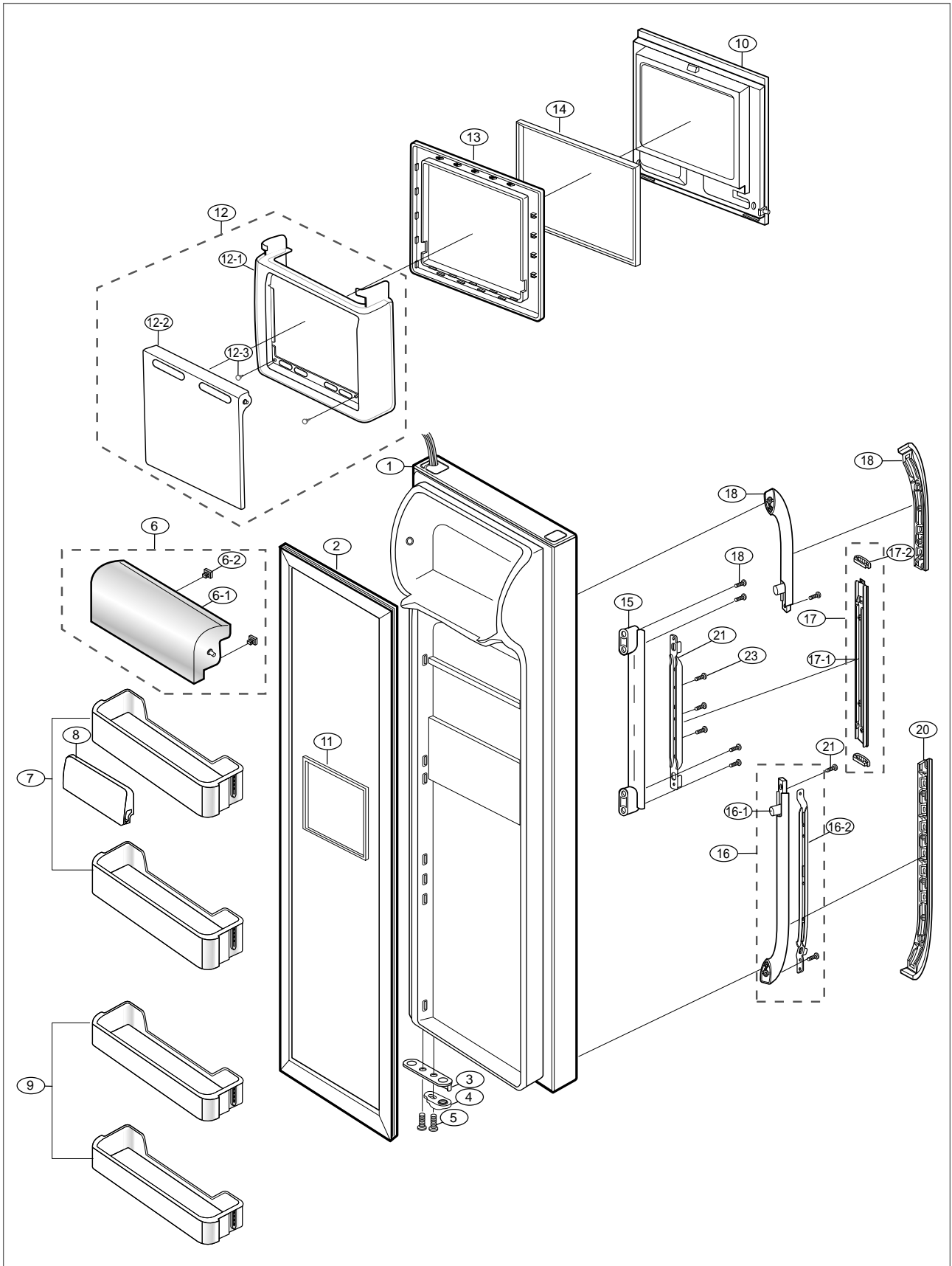
## 12-8) Refrigerator Room Door Exploded View





# 12 . Illustrated Parts Catalog.

## 12-9) Refrigerator Room Door Exploded View (RS21H, RS21F, RS21K, RS23H, RS23F, RS23K)



# Illustrated Parts Catalog.

## ■ Part List of Refrigerator Room Door Exploded View

| NO   | CODE-NO     | PART NAME               | Spec                      | Quantity | Remark |
|------|-------------|-------------------------|---------------------------|----------|--------|
| 1    | -           | ASSY DOOR FOAM REF      | -                         | 1        |        |
| 2    | DA63-30232K | GASKET DOOR-REF ASSY    | SF-PVC                    | 1        |        |
| 3    | DA61-00776A | STOPPER DOOR            | SHP1 , T3.0               | 1        |        |
| 4    | DA66-90112C | CAM HINGE-RISER,LOW     | NY-66                     | 1        |        |
| 5    | 6002-000468 | SCREW-TAPPING           | PH,+2S,M5.0,L18,ZPC(YEL)  | 4        |        |
| 6    | DA97-00904A | ASSY COVER-GUARD        |                           | 1        |        |
| 6-1  | DA63-00199B | COVER-GUARD             | GPPS                      | 1        |        |
| 6-2  | DA73-00216A | RUBBER-COVER GUARD      | SILICONE                  | 2        |        |
| 7    | DA63-00635A | GUARD BOTTLE-REF,UPP    | HIPP                      | 2        |        |
| 8    | DA71-00090A | GUIDE-BOTTLE REF        | PP                        | 1        |        |
| 9    | DA63-00590A | GUARD REF-LOW           | HIPP , SNOW-WHITE         | 2        |        |
| 10   | DA97-01347A | ASSY HOME BAR           | SNOW-WHITE                | 1        |        |
| 11   | DA63-00224A | GASKET-HOME BAR IN      | SF-PVC                    | 1        |        |
| 12   | DA63-00877A | COVER DOOR-RECESS,ASSY  | GPPS                      | 1        |        |
| 12-1 | DA63-00222A | COVER-DOOR RECESS-OUT   | GPPS                      | 1        |        |
| 12-2 | DA63-00223A | COVER-DOOR RECESS-IN    | GPPS                      | 1        |        |
| 12-3 | DA63-40167A | GROMMET-COVER CHIL      | T3.0 , SILICON            | 2        |        |
| 13   | DA63-01607A | COVER-BRACKET FRAME     | SNOW-WHITE                | 1        |        |
| 14   | DA63-00225A | GASKET-HOME BAR-OUT     | SF-PVC                    | 1        |        |
| 15   | DA64-00096B | HANDLE BASE-MID         | HIPP , SNOW-WHITE         | 1        |        |
| 16   | DA64-00111B | HANDLE-LOW-ASSY         | ABS , SNOW-WHITE          | 1        |        |
| 16-1 | DA64-00095B | HANDLE BASE-LOW         | HIPP , SNOW-WHITE         | 1        |        |
| 16-2 | DA71-00078A | REINF-HANDLE LOW        | SBHG1 , T1.4              | 1        |        |
| 17   | DA64-00209A | HANDLE TRIM-ASSY,MID    | ABS , SNOW-WHITE          | 1        |        |
| 17-1 | DA64-00098B | HANDLE TRIM-MID         | ABS , SNOW-WHITE          | 1        |        |
| 17-2 | DA64-00196A | TRIM-HANDLE CONNECT,MID | SILVER COLOR              | 2        |        |
| 18   | DA64-00097B | HANDLE BASE-UPP         | HIPP , SNOW-WHITE         | 1        |        |
| 19   | DA64-00100E | HANDLE-TRIM UPP         | ABS , SNOW-WHITE          | 1        |        |
| 20   | DA64-00099B | HANDLE TRIM-LOW         | ABS , SNOW-WHITE          | 1        |        |
| 21   | DA71-00077A | REINF-HANDLE-MID        | SBHG1 , T1.4              | 1        |        |
| 22   | 6002-000213 | SCREW-TAPPING           | TH,+1,M4,L12,ZPC(YEL)     | 3        |        |
| 23   | 6002-000468 | SCREW-TAPPING           | PH,+2S,M5.0,L18,ZPC(YEL)  | 4        |        |
| 24   | 6002-000470 | SCREW-TAPPING           | TH,+1,M4,L10,ZPC,SCRCH18A | 3        |        |
|      |             |                         |                           |          |        |
|      |             |                         |                           |          |        |
|      |             |                         |                           |          |        |
|      |             |                         |                           |          |        |
|      |             |                         |                           |          |        |
|      |             |                         |                           |          |        |
|      |             |                         |                           |          |        |
|      |             |                         |                           |          |        |
|      |             |                         |                           |          |        |
|      |             |                         |                           |          |        |
|      |             |                         |                           |          |        |
|      |             |                         |                           |          |        |
|      |             |                         |                           |          |        |
|      |             |                         |                           |          |        |
|      |             |                         |                           |          |        |
|      |             |                         |                           |          |        |
|      |             |                         |                           |          |        |
|      |             |                         |                           |          |        |
|      |             |                         |                           |          |        |
|      |             |                         |                           |          |        |