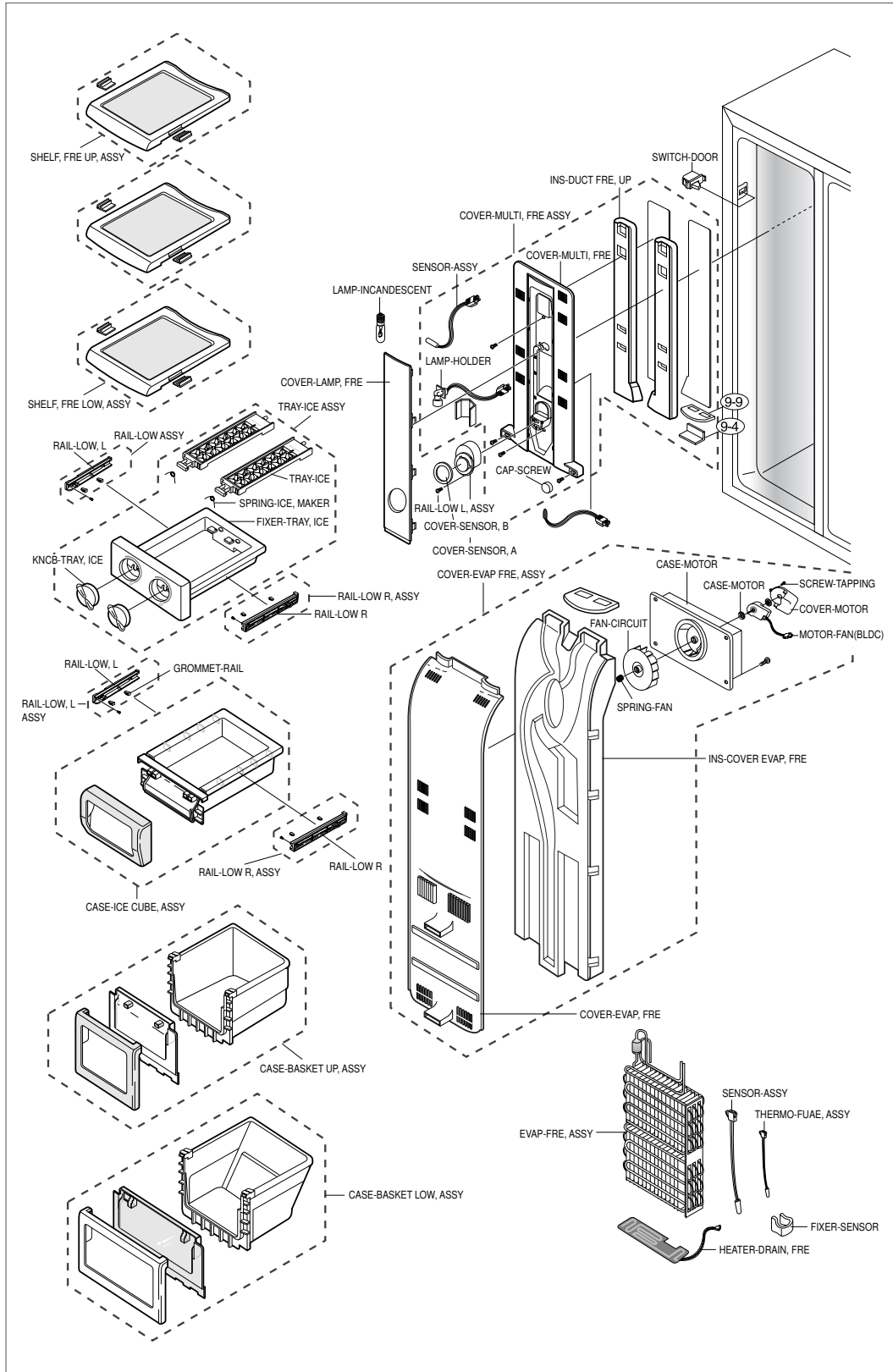
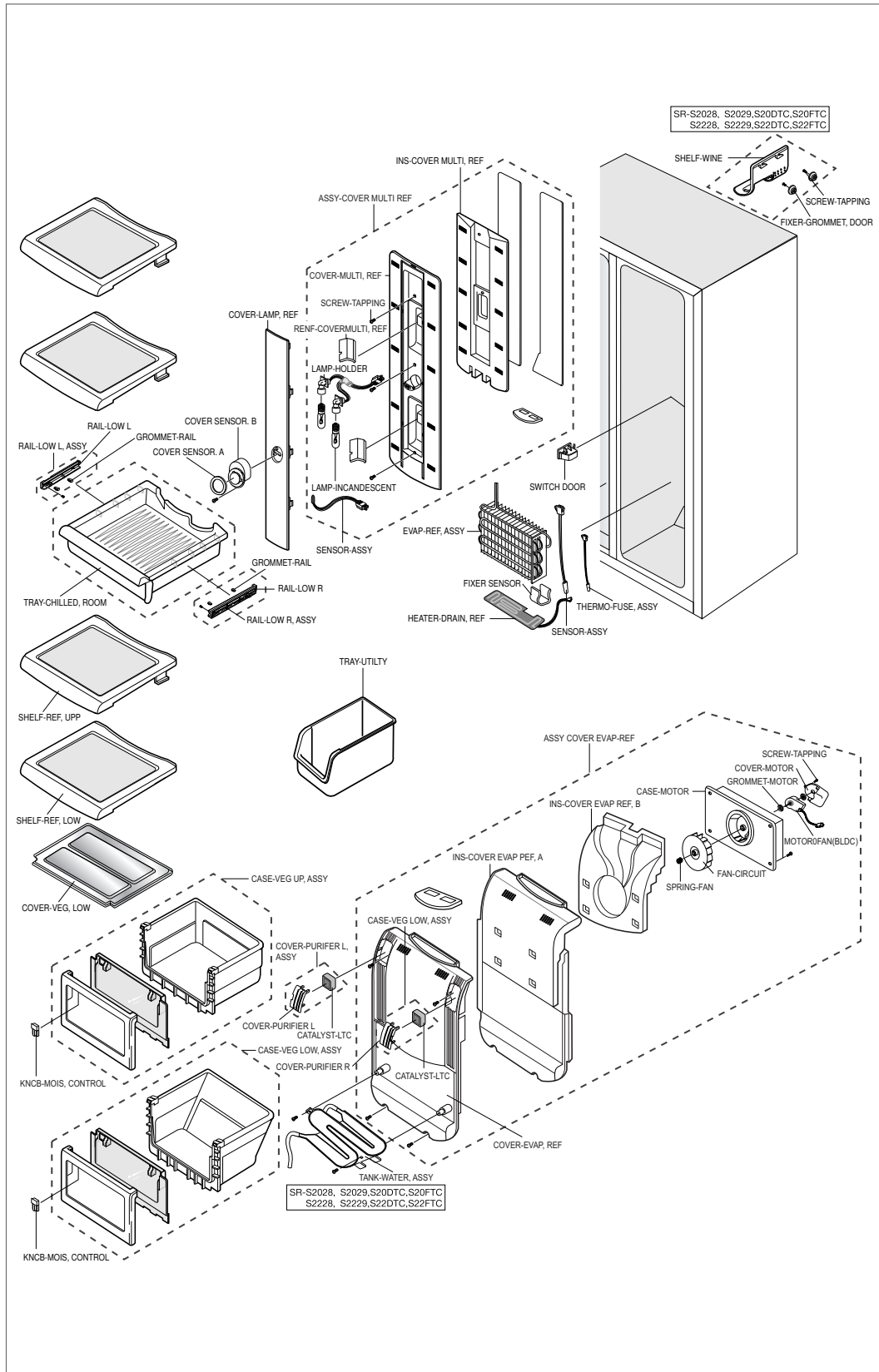


## 14. Refrigerator Exploded View & List

### 14-1) Freezer Room Exploded View (SR-S2026, S2027, S2226, S2227/S20NTC,S20BTC,S22NTC,S22BTC)



## 14-2) Refrigerator Room Exploded View(SR-S20.. ~ S22..)



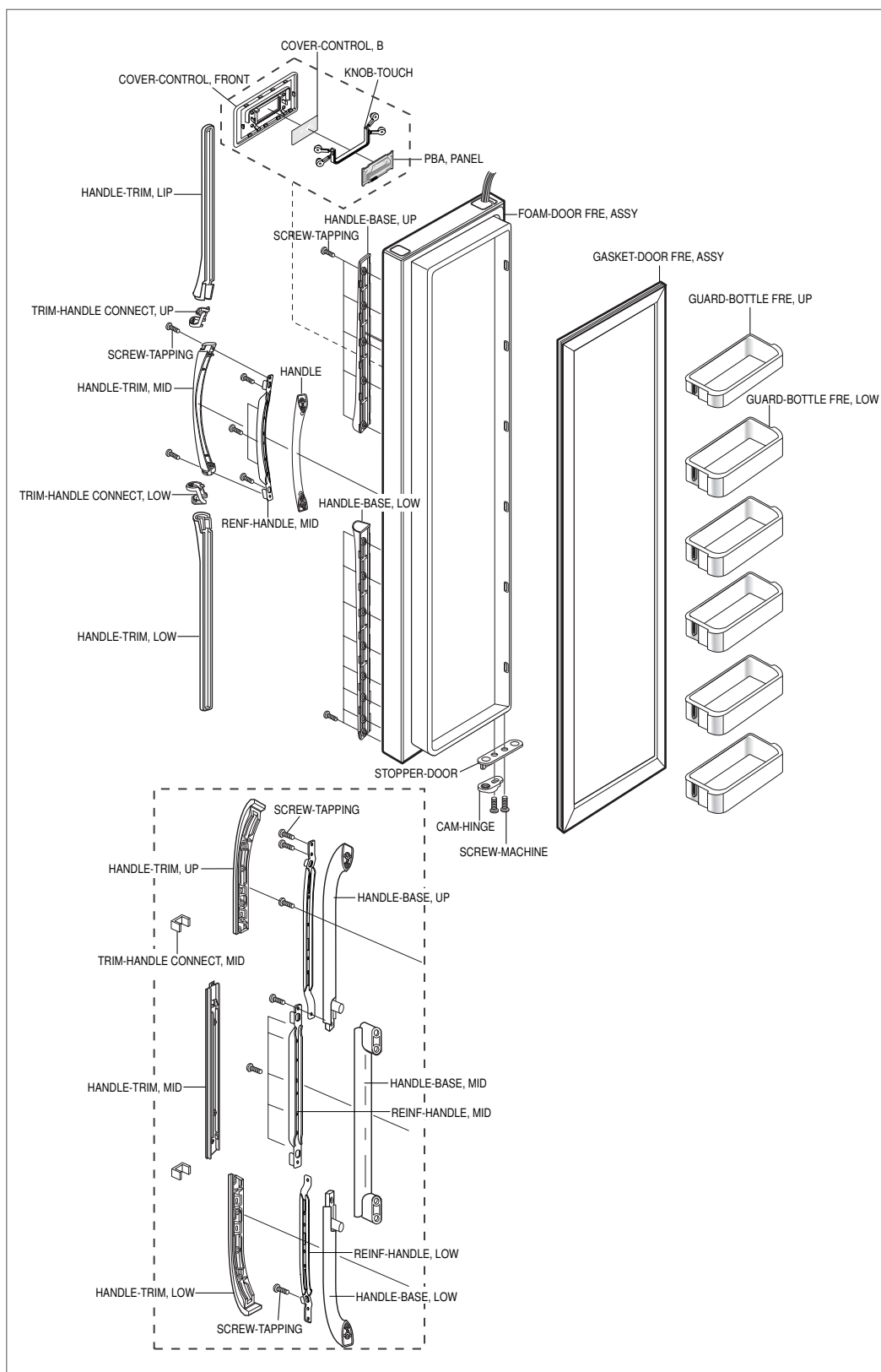
Exploded view diagram of a refrigerator assembly, showing various components and their assembly order. The diagram includes the following parts and sub-assemblies:

- Top Components:**
  - SR-S2028, S2029, S20DTC, S20FTC
  - S2228, S2229, S22DTC, S22FTC
  - FIXER-GRCMMET TUBE, FILL
  - GRCMMET WATER FILL, IN
  - COVER-PIPE WATER, ASSY
  - SEAL-WATER, PIPE
  - FIXER-VALVU, WATER
  - NUT-WATER, LINE
  - PIPE-WATER, LINE
  - CLAMP
  - VALVE-WATER, ASSY
  - SCREW-TAPPING
- Filter-Water Assy Total:**
  - FILTER-WATER ASSY
  - CLAMP
  - PIPE-WATER LINE
  - TUBE-FITTING JOINT
  - CONNECT CR-WATER ASSY
- Internal Components:**
  - CEP POWER-CORD
  - COVER-COMP, ASSY
  - HINGE UP ASSY, R
  - HINGE UP, R
  - SHIM-HINGE UP
  - HINGE-UP, L
  - HINGE-UP ASSY, L
  - COVER-HINGE UP, L
  - RNER-HINGE, UP
  - CHASSIS-COMP, ASSY
  - SHIM-HINGE UP
  - PIPE-SUB COND, ASSY
  - GROMMET-SUCT, PIPE
  - GROMMET-MOTOR
  - MOTOR-CIRCUIT (BLDC)
  - COVER-MOTOR
  - SCREW-TAPPING
  - SHIM-HINGE, LOW
  - HINGE-LOW, R
  - HINGE-LOW, L
  - HINGE-LOW ASSY, L
  - SCREW-TAP, TITE
  - FOOT-FRONT
  - BRACKET-HINGE LOW, ASSY
  - NUT-HEXAGON
  - SCREW-MACHINE
  - BRACKT-HINGE, LOW
  - SCREW-TAP, TITE
  - RIVER-CASTER
  - CASTER-FRONT, ASSY
  - DUCT-CAN, C
  - COVER-LEG, FRONT
  - REINF-CASER FRONT
  - CASER-FRONT
  - TRAY-DRAIN WATER, ASSY
  - SCREW-EARTH
  - CHASSIS-COMP
  - CHASSIS-COMP ASSY
  - CASTER-REAR
  - SCREW-TAP, TITE
  - RIVET-CASTER
  - WIRE-HARNESS, COMP
  - FAN-TURBO
  - SPRING-FAN
  - SUPPORT-MOTOR CIRCUIT, AC
  - GROMMET-COMP
  - RELAY-PTC
  - COVER-RELAY
  - CABLE-RELAY
  - PROTECT OR-OIL
  - COMPRESSOR
  - DRYER
  - BOLT-HEX COMP
  - SEAL-COND
  - PIPE-SUB COND, ASSY
  - GROMMET-SUCT, PIPE
  - GROMMET-MOTOR
  - MOTOR-CIRCUIT (BLDC)
  - COVER-MOTOR
  - SCREW-TAPPING
  - SHIM-HINGE, LOW
  - HINGE-LOW, R
  - HINGE-LOW, L
  - HINGE-LOW ASSY, L
  - SCREW-TAP, TITE
  - FOOT-FRONT
  - BRACKET-HINGE LOW, ASSY
  - NUT-HEXAGON
  - SCREW-MACHINE
  - BRACKT-HINGE, LOW
  - SCREW-TAP, TITE
  - RIVER-CASTER
  - CASTER-FRONT, ASSY
  - DUCT-CAN, C
  - COVER-LEG, FRONT
  - REINF-CASER FRONT
  - CASER-FRONT
  - TRAY-DRAIN WATER, ASSY
  - SCREW-EARTH
  - CHASSIS-COMP
  - CHASSIS-COMP ASSY
  - CASTER-REAR
  - SCREW-TAP, TITE
  - RIVET-CASTER
  - WIRE-HARNESS, COMP
  - FAN-TURBO
  - SPRING-FAN
  - SUPPORT-MOTOR CIRCUIT, AC
  - GROMMET-COMP
  - RELAY-PTC
  - COVER-RELAY
  - CABLE-RELAY
  - PROTECT OR-OIL
  - COMPRESSOR
  - DRYER
  - BOLT-HEX COMP
  - SEAL-COND
  - PIPE-SUB COND, ASSY
  - GROMMET-SUCT, PIPE
  - GROMMET-MOTOR
  - MOTOR-CIRCUIT (BLDC)
  - COVER-MOTOR
  - SCREW-TAPPING
  - SHIM-HINGE, LOW
  - HINGE-LOW, R
  - HINGE-LOW, L
  - HINGE-LOW ASSY, L
  - SCREW-TAP, TITE
  - FOOT-FRONT
  - BRACKET-HINGE LOW, ASSY
  - NUT-HEXAGON
  - SCREW-MACHINE
  - BRACKT-HINGE, LOW
  - SCREW-TAP, TITE
  - RIVER-CASTER
  - CASTER-FRONT, ASSY
  - DUCT-CAN, C
  - COVER-LEG, FRONT
  - REINF-CASER FRONT
  - CASER-FRONT
  - TRAY-DRAIN WATER, ASSY
  - SCREW-EARTH
  - CHASSIS-COMP
  - CHASSIS-COMP ASSY
  - CASTER-REAR
  - SCREW-TAP, TITE
  - RIVET-CASTER
  - WIRE-HARNESS, COMP
  - FAN-TURBO
  - SPRING-FAN
  - SUPPORT-MOTOR CIRCUIT, AC
  - GROMMET-COMP
  - RELAY-PTC
  - COVER-RELAY
  - CABLE-RELAY
  - PROTECT OR-OIL
  - COMPRESSOR
  - DRYER
  - BOLT-HEX COMP
  - SEAL-COND
  - PIPE-SUB COND, ASSY
  - GROMMET-SUCT, PIPE
  - GROMMET-MOTOR
  - MOTOR-CIRCUIT (BLDC)
  - COVER-MOTOR
  - SCREW-TAPPING
  - SHIM-HINGE, LOW
  - HINGE-LOW, R
  - HINGE-LOW, L
  - HINGE-LOW ASSY, L
  - SCREW-TAP, TITE
  - FOOT-FRONT
  - BRACKET-HINGE LOW, ASSY
  - NUT-HEXAGON
  - SCREW-MACHINE
  - BRACKT-HINGE, LOW
  - SCREW-TAP, TITE
  - RIVER-CASTER
  - CASTER-FRONT, ASSY
  - DUCT-CAN, C
  - COVER-LEG, FRONT
  - REINF-CASER FRONT
  - CASER-FRONT
  - TRAY-DRAIN WATER, ASSY
  - SCREW-EARTH
  - CHASSIS-COMP
  - CHASSIS-COMP ASSY
  - CASTER-REAR
  - SCREW-TAP, TITE
  - RIVET-CASTER
  - WIRE-HARNESS, COMP
  - FAN-TURBO
  - SPRING-FAN
  - SUPPORT-MOTOR CIRCUIT, AC
  - GROMMET-COMP
  - RELAY-PTC
  - COVER-RELAY
  - CABLE-RELAY
  - PROTECT OR-OIL
  - COMPRESSOR
  - DRYER
  - BOLT-HEX COMP
  - SEAL-COND
  - PIPE-SUB COND, ASSY
  - GROMMET-SUCT, PIPE
  - GROMMET-MOTOR
  - MOTOR-CIRCUIT (BLDC)
  - COVER-MOTOR
  - SCREW-TAPPING
  - SHIM-HINGE, LOW
  - HINGE-LOW, R
  - HINGE-LOW, L
  - HINGE-LOW ASSY, L
  - SCREW-TAP, TITE
  - FOOT-FRONT
  - BRACKET-HINGE LOW, ASSY
  - NUT-HEXAGON
  - SCREW-MACHINE
  - BRACKT-HINGE, LOW
  - SCREW-TAP, TITE
  - RIVER-CASTER
  - CASTER-FRONT, ASSY
  - DUCT-CAN, C
  - COVER-LEG, FRONT
  - REINF-CASER FRONT
  - CASER-FRONT
  - TRAY-DRAIN WATER, ASSY
  - SCREW-EARTH
  - CHASSIS-COMP
  - CHASSIS-COMP ASSY
  - CASTER-REAR
  - SCREW-TAP, TITE
  - RIVET-CASTER
  - WIRE-HARNESS, COMP
  - FAN-TURBO
  - SPRING-FAN
  - SUPPORT-MOTOR CIRCUIT, AC
  - GROMMET-COMP
  - RELAY-PTC
  - COVER-RELAY
  - CABLE-RELAY
  - PROTECT OR-OIL
  - COMPRESSOR
  - DRYER
  - BOLT-HEX COMP
  - SEAL-COND
  - PIPE-SUB COND, ASSY
  - GROMMET-SUCT, PIPE
  - GROMMET-MOTOR
  - MOTOR-CIRCUIT (BLDC)
  - COVER-MOTOR
  - SCREW-TAPPING
  - SHIM-HINGE, LOW
  - HINGE-LOW, R
  - HINGE-LOW, L
  - HINGE-LOW ASSY, L
  - SCREW-TAP, TITE
  - FOOT-FRONT
  - BRACKET-HINGE LOW, ASSY
  - NUT-HEXAGON
  - SCREW-MACHINE
  - BRACKT-HINGE, LOW
  - SCREW-TAP, TITE
  - RIVER-CASTER
  - CASTER-FRONT, ASSY
  - DUCT-CAN, C
  - COVER-LEG, FRONT
  - REINF-CASER FRONT
  - CASER-FRONT
  - TRAY-DRAIN WATER, ASSY
  - SCREW-EARTH
  - CHASSIS-COMP
  - CHASSIS-COMP ASSY
  - CASTER-REAR
  - SCREW-TAP, TITE
  - RIVET-CASTER
  - WIRE-HARNESS, COMP
  - FAN-TURBO
  - SPRING-FAN
  - SUPPORT-MOTOR CIRCUIT, AC
  - GROMMET-COMP
  - RELAY-PTC
  - COVER-RELAY
  - CABLE-RELAY
  - PROTECT OR-OIL
  - COMPRESSOR
  - DRYER
  - BOLT-HEX COMP
  - SEAL-COND
  - PIPE-SUB COND, ASSY
  - GROMMET-SUCT, PIPE
  - GROMMET-MOTOR
  - MOTOR-CIRCUIT (BLDC)
  - COVER-MOTOR
  - SCREW-TAPPING
  - SHIM-HINGE, LOW
  - HINGE-LOW, R
  - HINGE-LOW, L
  - HINGE-LOW ASSY, L
  - SCREW-TAP, TITE
  - FOOT-FRONT
  - BRACKET-HINGE LOW, ASSY
  - NUT-HEXAGON
  - SCREW-MACHINE
  - BRACKT-HINGE, LOW
  - SCREW-TAP, TITE
  - RIVER-CASTER
  - CASTER-FRONT, ASSY
  - DUCT-CAN, C
  - COVER-LEG, FRONT
  - REINF-CASER FRONT
  - CASER-FRONT
  - TRAY-DRAIN WATER, ASSY
  - SCREW-EARTH
  - CHASSIS-COMP
  - CHASSIS-COMP ASSY
  - CASTER-REAR
  - SCREW-TAP, TITE
  - RIVET-CASTER
  - WIRE-HARNESS, COMP
  - FAN-TURBO
  - SPRING-FAN
  - SUPPORT-MOTOR CIRCUIT, AC
  - GROMMET-COMP
  - RELAY-PTC
  - COVER-RELAY
  - CABLE-RELAY
  - PROTECT OR-OIL
  - COMPRESSOR
  - DRYER
  - BOLT-HEX COMP
  - SEAL-COND
  - PIPE-SUB COND, ASSY
  - GROMMET-SUCT, PIPE
  - GROMMET-MOTOR
  - MOTOR-CIRCUIT (BLDC)
  - COVER-MOTOR
  - SCREW-TAPPING
  - SHIM-HINGE, LOW
  - HINGE-LOW, R
  - HINGE-LOW, L
  - HINGE-LOW ASSY, L
  - SCREW-TAP, TITE
  - FOOT-FRONT

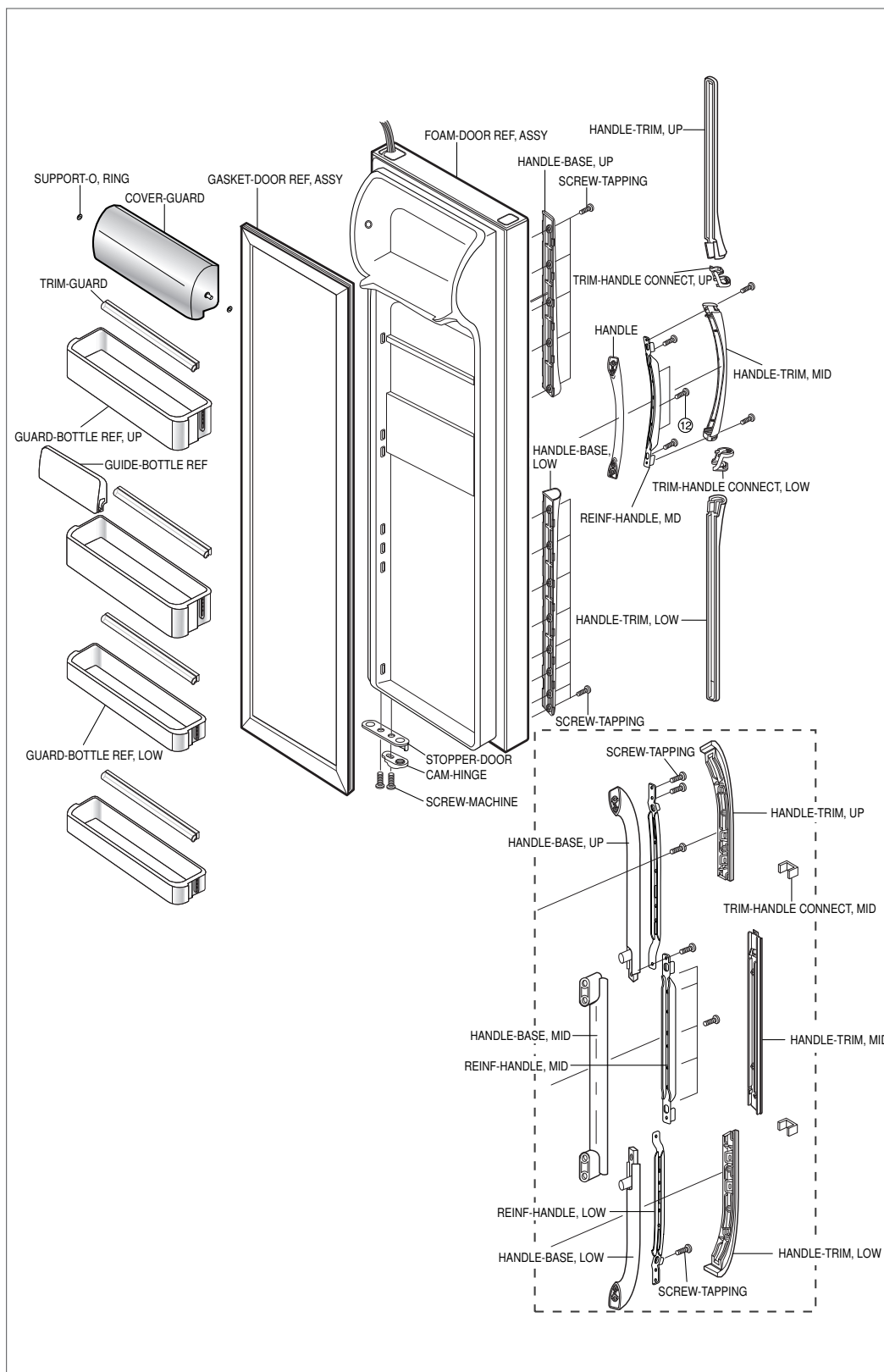
Diagram illustrating the exploded view of a refrigerator's internal components, showing various parts and their assembly relationships. The components are labeled in English and French:

- COVER-ICE BUCKET, A
- COVER-ICE, BUCKER, B
- CRUSHER-ICE, ASSY
- REINF-ACTUATOR, DISP
- SPRING-ICE, MAKER
- BLADE-ICE, MAKER
- BLADE-DISPENSER
- CLAMP-HELIX, DISP
- TRAY-ICE, BUCKET
- ICE-MAKER
- SWITCH DOOR
- INS-DUCT FRE, UP
- COVER-MULTI, FRE ASSY
- COVER-MULTI, FRE
- PLATEINS, DUCT
- SEAL, FOAM PE
- SLIDER, SOLENOIDE, DISP
- GEAR-SOLENOIDE
- MOTOR GEAR
- CASE-MOTOR
- SADDLE-SOLENOIDE
- SENSOR ASSY
- CAP-SCREW
- COVER-SENSOR, A
- COVER-SENSOR, B
- WIRE-HARNES, SUB
- COVER-LAMP, FRE
- CASE-AUGER MOTOR, ASSY
- LAMP-INCANDESCENT
- LAMP-HOLDER
- FIXER-NUT
- SCREW-SPECIAL
- PLATE-DIALIBER, DISP
- NUT
- GUIDE-ICE DISPENSER RING
- PIN
- BLADE
- COVER-CRUSHER, DISP
- WASHER-PLAIN
- PIN-SPIRAL
- FIXER-GUARD
- NUT-NEX
- SEAL-POM
- SEAL-POM
- BLADE
- BLADE
- BLADE
- FIXER-GROMMET, DOOR
- SUPT-ICE, MAKER
- COVER-EVAP FRE, ASSY
- SHELF-FRE UP, ASSY
- SHELF-FRE UP, ASSY
- SHELF-FRE UP, ASSY
- SHELF-FRE LOW, ASSY
- CASE-BASKET UP, ASSY
- CASE-BASKET LOW, ASSY
- COVER-EVAP, FRE
- INS-COVER EVAP, FRE
- SPRING-FAN
- FAN-CIRCUIT
- GROMMET-MOTOR
- CASE-MOTOR
- SCREW-TAPPING
- COVER-MOTOR
- GROMMET-CASE, MOTOR
- MOTOR-FAN(BLDC)
- EVAP-FRE, ASSY
- SENSOR-ASSY
- THERMO-FUSE, ASSY
- FIXER-SENSOR
- HEATER-DRAIN, FRE

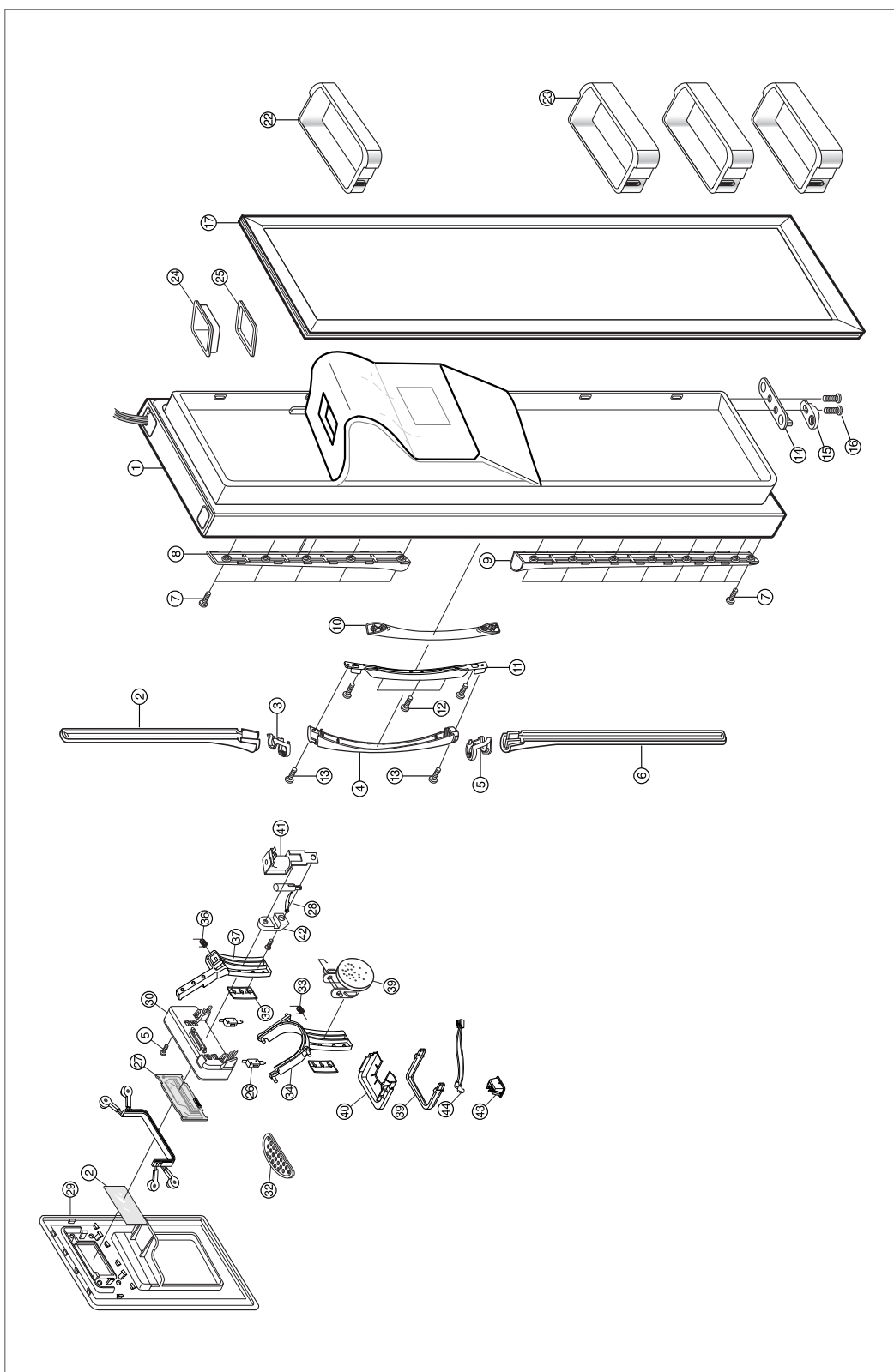
# 14-5) Freezer Room Door Exploded View (SR-S2026, S2027, S2226, S2227/S20NTC,S20BTC,S22NTC,S22BTC)



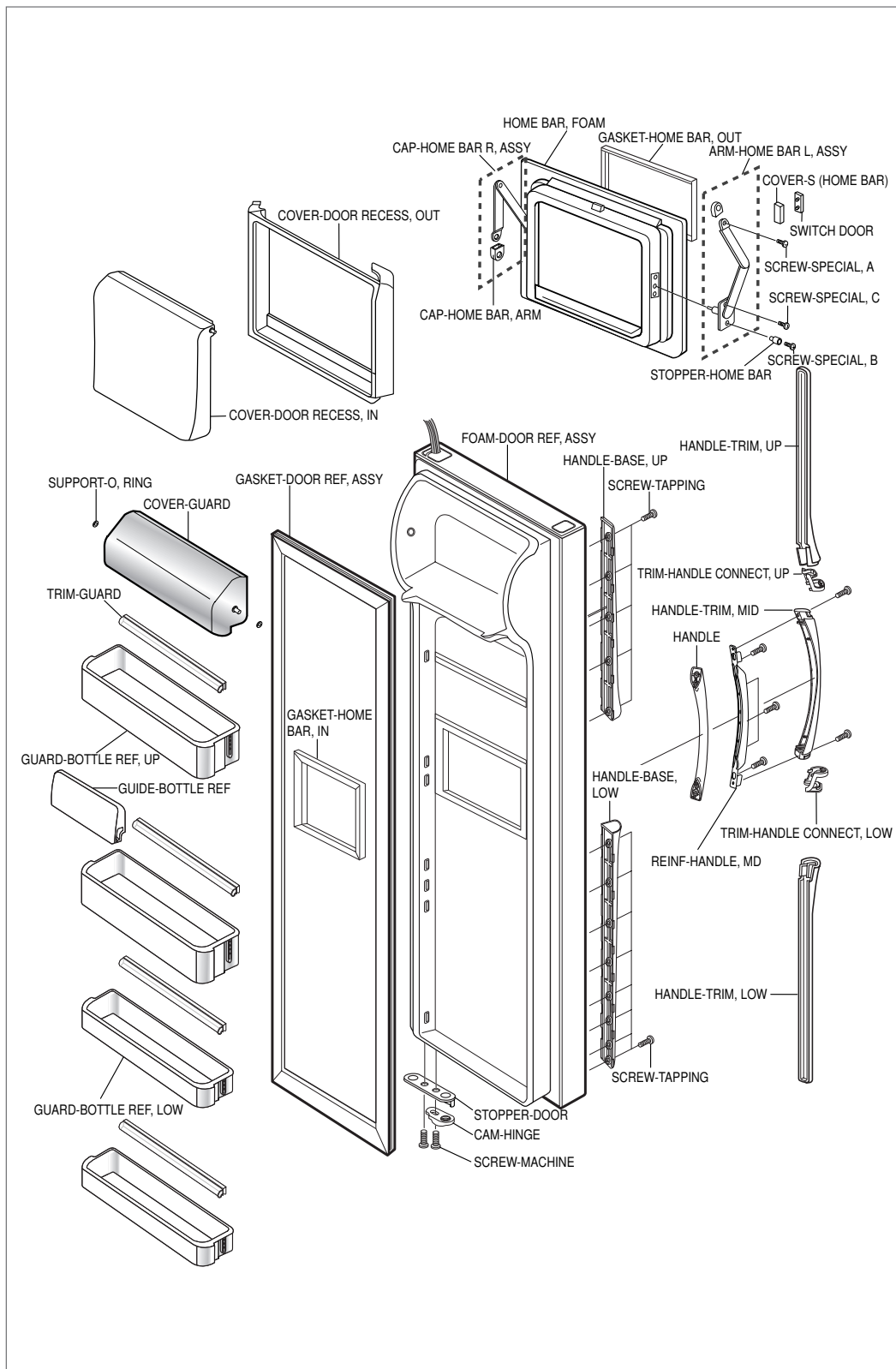
# 14-6) Refrigerator Room Door Exploded View (SR-S2026, S2028, S2226, S2228/S20NTC,S20DTC,S22NTC,S22DTC)



# 14-7) Freezer Room Door Exploded View (SR-S2028, S2029, S2228, S2229/S20DTC,S20FTC,S22DTC,S22FTC)

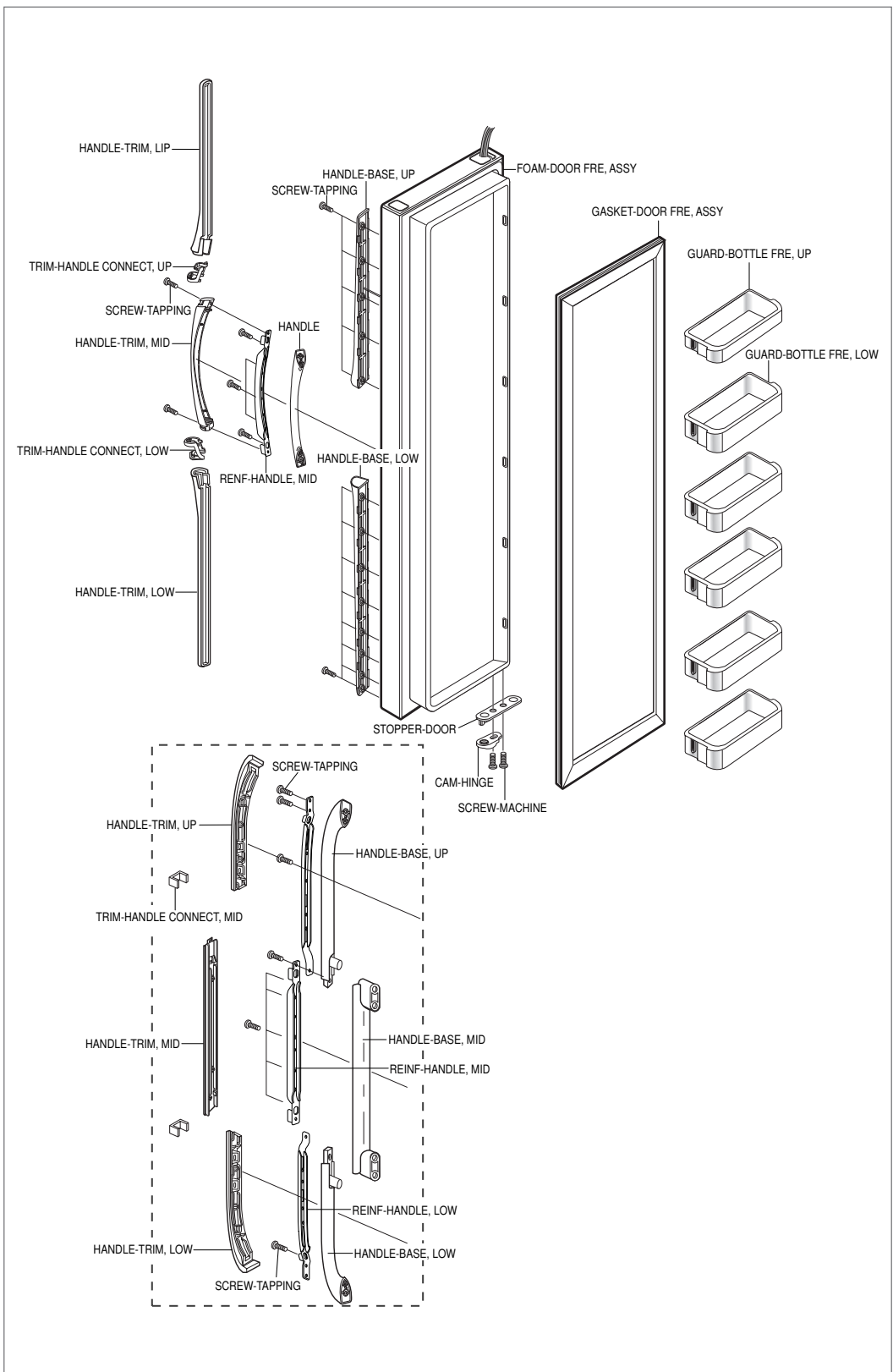


## 14-8) Refrigerator Room Door Exploded View (SR-S2027,S2029, S2227,S2229/S20FTC,S22BTC,S22FTC)





14-9) Freezer Room Door Exploded View (SR-S2025/S20YTC)



## 14-10) Refrigerator Room Door Exploded View (SR-S2025/S20YTC)

