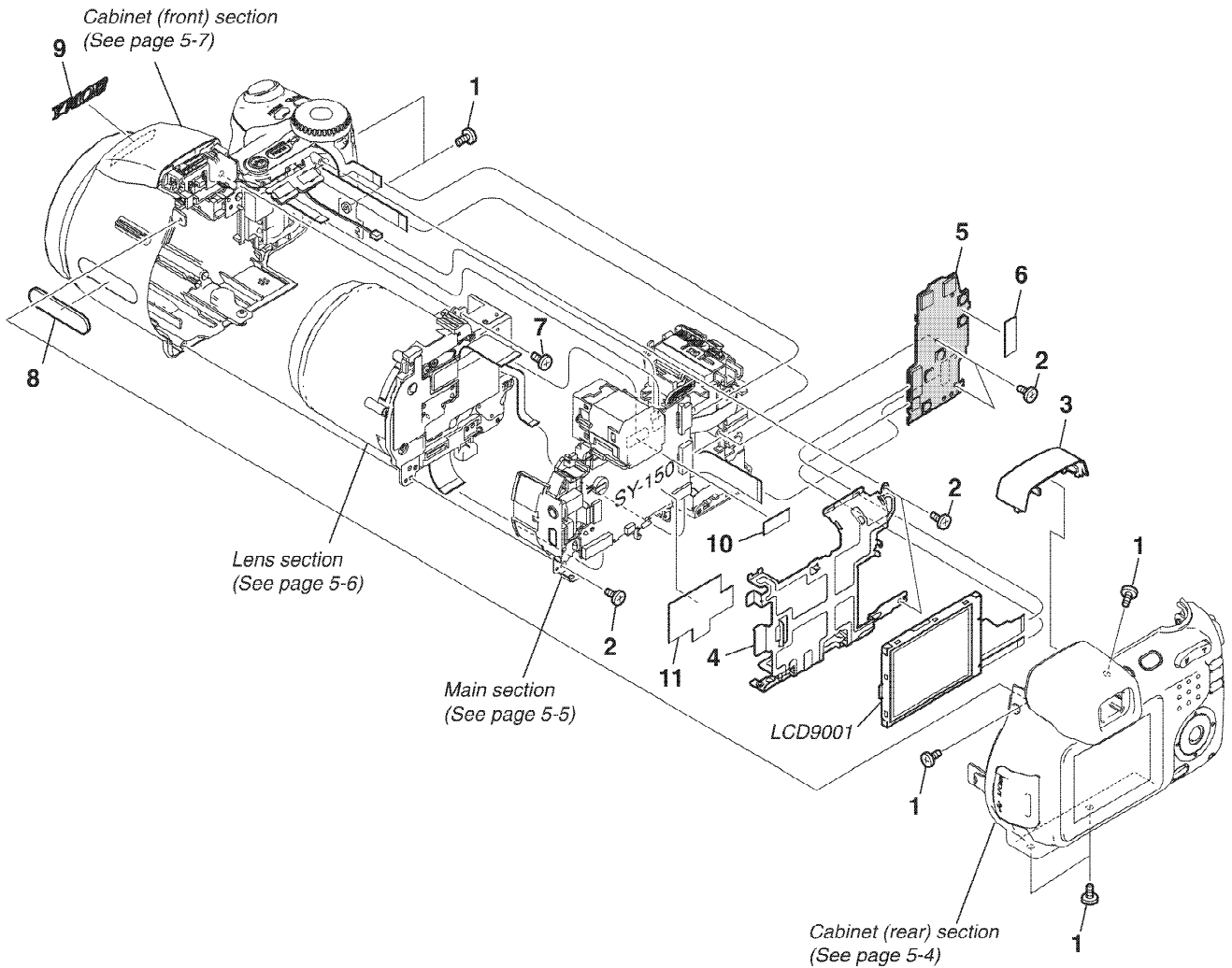


5. REPAIR PARTS LIST

5-1. EXPLODED VIEWS

5-1-1. OVERALL SECTION



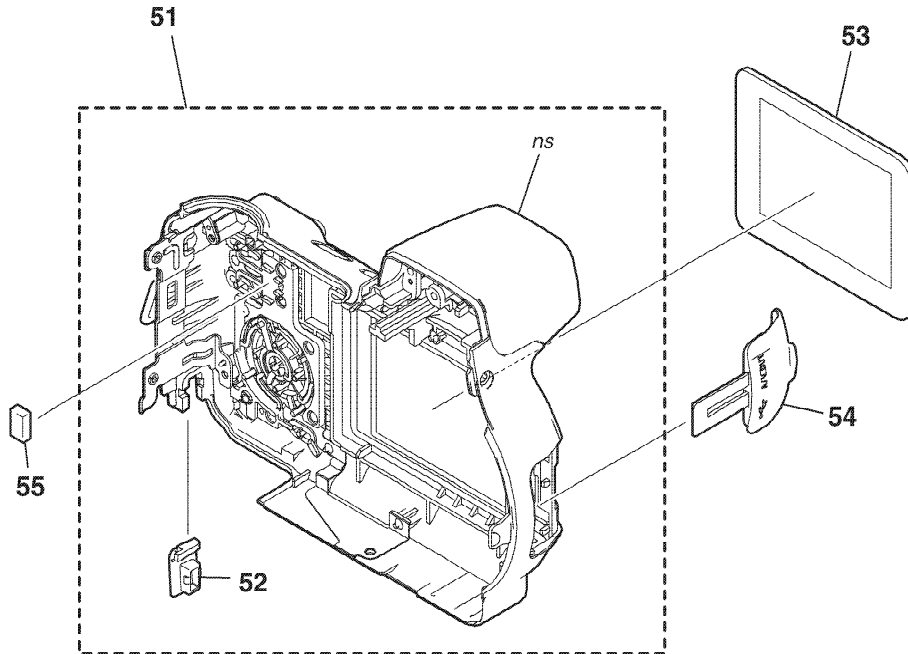
Ref. No.	Part No.	Description
1	2-655-582-11	SCREW 0+P2 M2 NEWTRU-STAR
2	3-080-204-11	SCREW, TAPPING, P2
3	2-673-327-01	CABINET (UPPER)
* 4	2-673-307-01	FRAME, LCD
5	A-1176-910-A	SW-473 BOARD, COMPLETE
* 6	2-678-099-01	SHEET, SW MUFFLE

Ref. No.	Part No.	Description
7	2-666-551-21	SCREW, TAPPING, P2
8	2-673-346-01	PLATE, ORNAMENTAL
9	2-673-341-01	EMBLEM (320), ST
* 10	2-685-307-01	RETAINER, TAPE (CD)
* 11	2-673-339-01	LABEL, FUSE REPLACEMENT CAUTION
LCD9001	8-753-248-51	ACX351AKM-3

5. REPAIR PARTS LIST

5-1-2. CABINET (REAR) SECTION

ns : not supplied



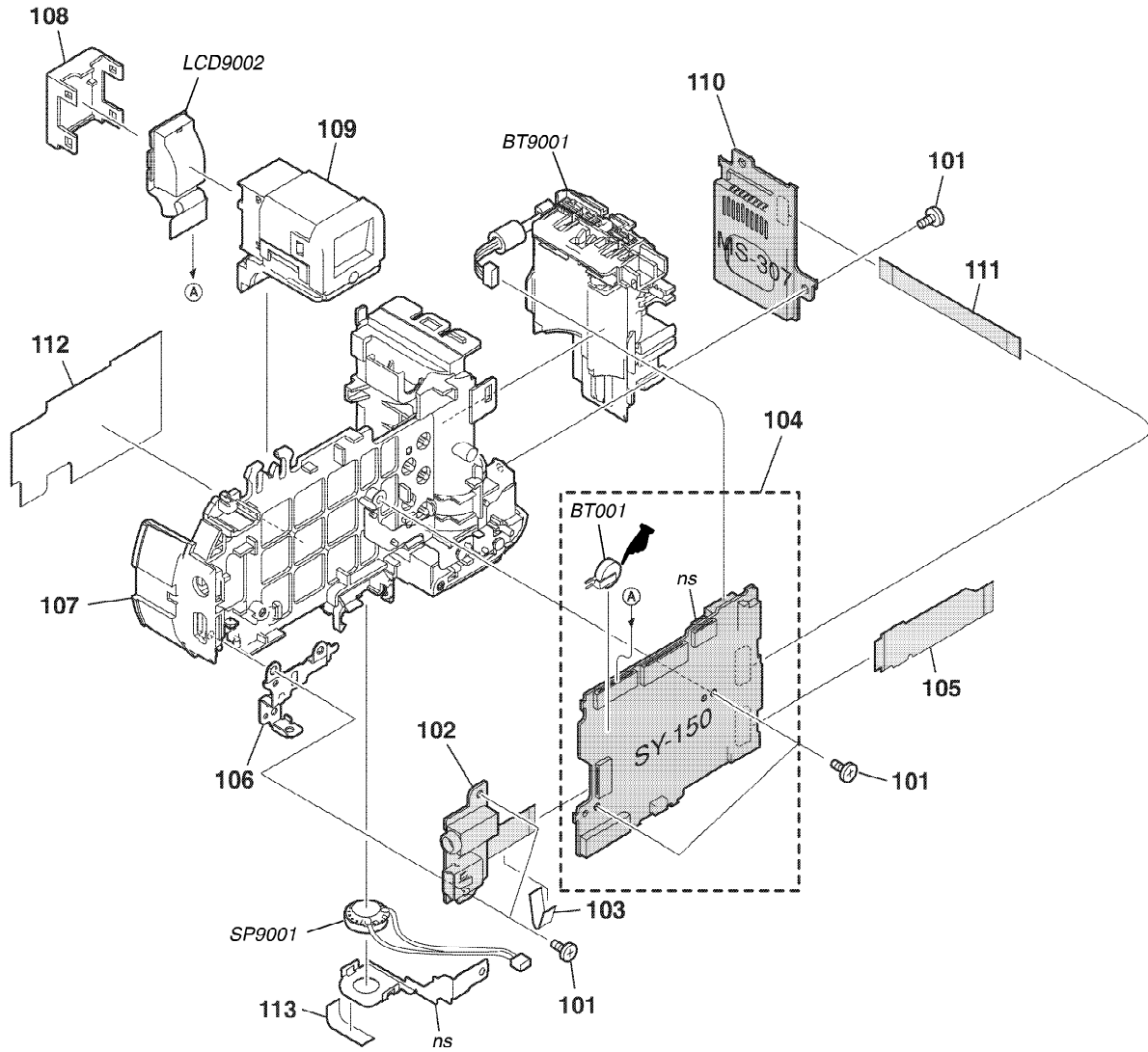
Ref. No.	Part No.	Description
51	X-2108-908-1	CABINET (REAR) ASSY
52	2-673-247-01	LID, DC
53	2-673-333-01	WINDOW, LCD

Ref. No.	Part No.	Description
54	2-673-303-01	LID, JK
* 55	2-685-484-01	CUSHION (REAR)

5. REPAIR PARTS LIST

5-1-3. MAIN SECTION

ns : not supplied



: BT001 (Lithium battery) SY-150 board on the mount position. (See page 4-52)

Ref. No.	Part No.	Description
101	3-080-204-11	SCREW, TAPPING, P2
102	A-1176-915-A	JK-306 FLEXIBLE BOARD
* 103	2-672-564-01	SHEET (JK), RADIATION
104	A-1176-916-A	SY-150 BOARD, COMPLETE (SERVICE) (GP2)
104	A-1176-917-A	SY-150 BOARD, COMPLETE (SERVICE) (GP3)
104	A-1176-918-A	SY-150 BOARD, COMPLETE (SERVICE) (GP4)
105	1-869-227-11	SW-478 FLEXIBLE BOARD
* 106	2-673-306-01	PLATE, JK GROUND
107	X-2108-910-1	HOLDER ASSY, BATTERY
* 108	2-673-337-01	RETAINER, MODULE

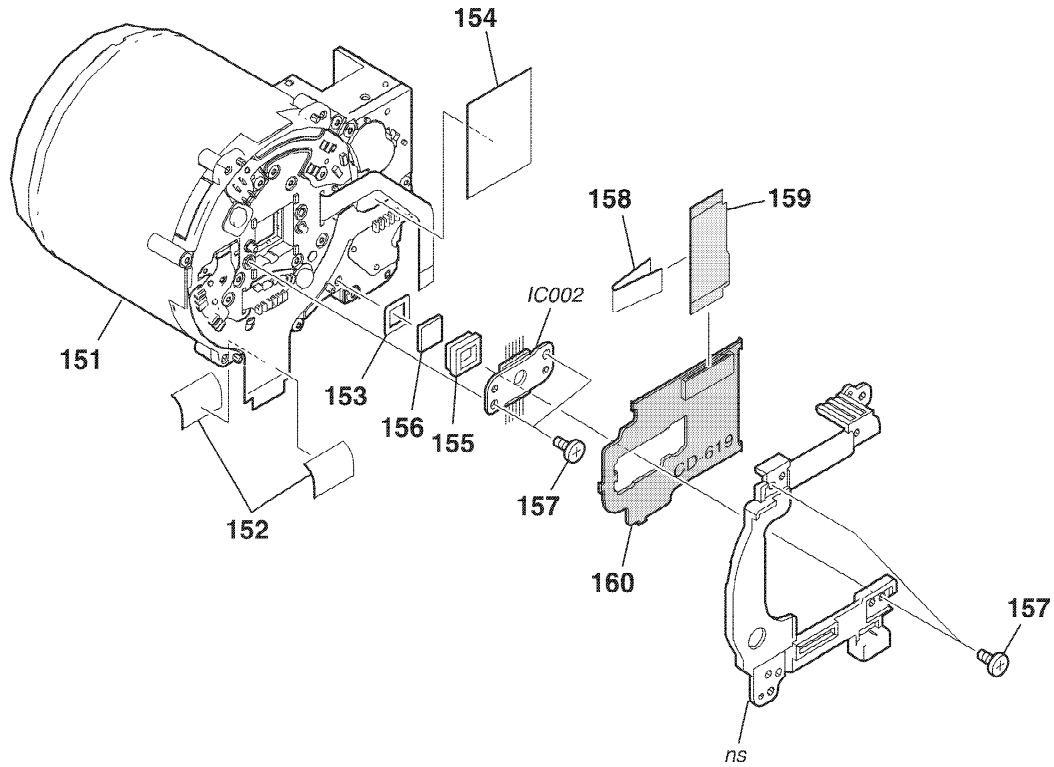
Ref. No.	Part No.	Description
109	X-2108-913-1	ASSY, VF
110	A-1176-912-A	MS-307 BOARD, COMPLETE
111	1-831-557-11	FLEXIBLE FLAT CABLE (MS-030)
* 112	2-677-004-01	SHEET (INR), RADIATION
* 113	2-684-446-01	SPACER, SP
△ BT001	1-756-539-21	BATTERY, LITHIUM SECONDARY
* BT9001	1-780-338-11	TERMINAL BOARD, BATTERY
LCD9002	1-802-033-11	LCD MODULE
SP9001	1-826-403-21	LOUDSPEAKER (1.0CM)

CAUTION :
 Danger of explosion if battery is incorrectly replaced.
 Replace only with the same or equivalent type.

5. REPAIR PARTS LIST

5-1-4. LENS SECTION

ns : not supplied



Ref. No.	Part No.	Description
151	A-1177-128-A	OPTICS UNIT (B191A) (SERVICE)
* 152	2-672-563-01	SHEET (LNS), RADIATION
153	2-592-693-01	PLATE (T), LIGHT INTERCEPTION
* 154	2-672-565-01	SHEET (TB), RADIATION
155	2-592-605-01	RUBBER (TM), SEAL
156	1-788-338-11	OPTICAL FILTER BLOCK

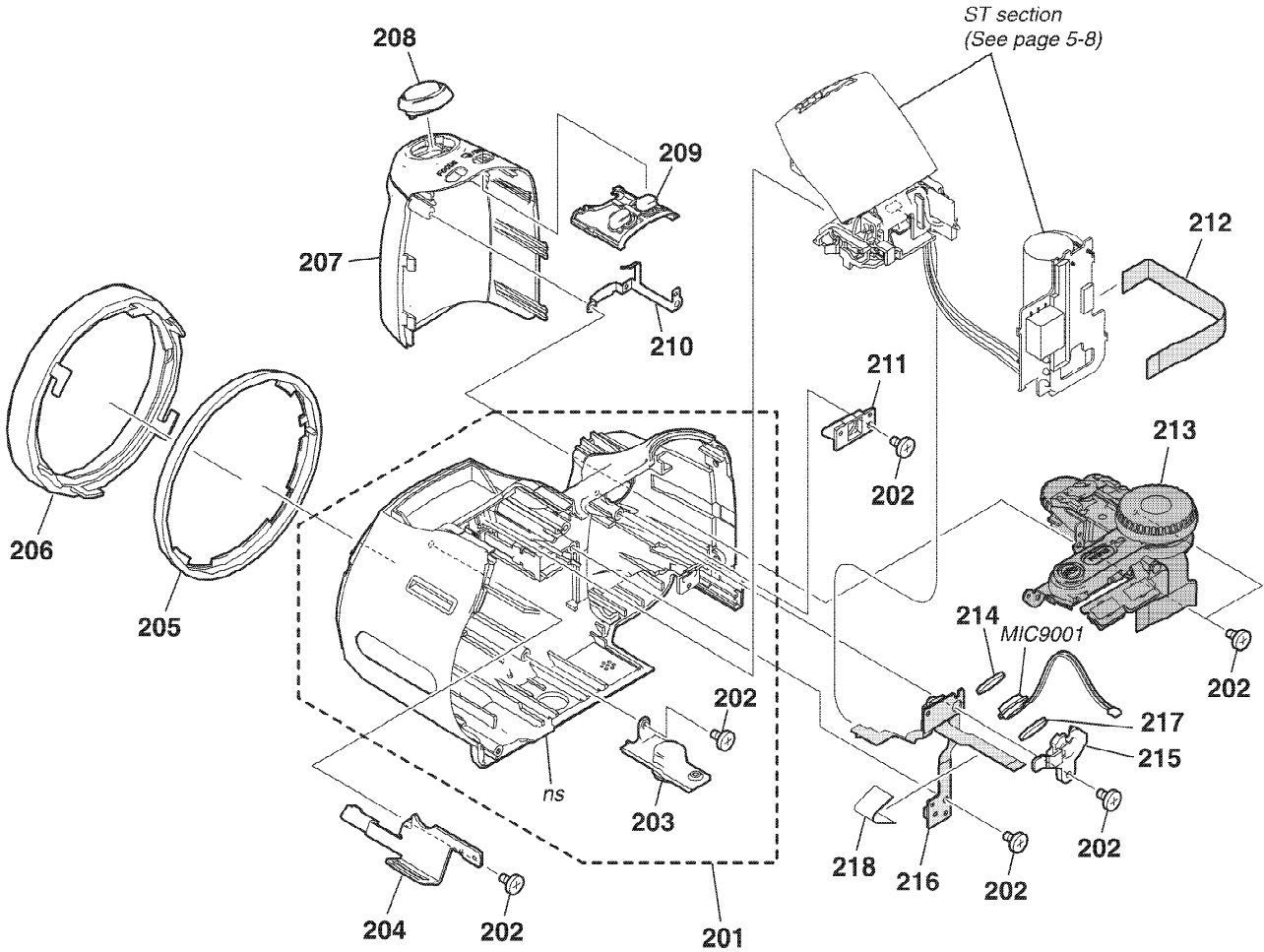
Ref. No.	Part No.	Description
157	2-666-551-21	SCREW, TAPPING, P2
* 158	2-672-562-01	SHEET (CD), RADIATION
159	1-869-222-11	CD-621 FLEXIBLE BOARD
160	A-1176-911-A	CD-619 BOARD, COMPLETE (IC002 is not included in this COMPLETE board.)
IC002	A-1176-034-A	CCD BLOCK ASSY (CCD IMAGER) (IC002 is not included in this COMPLETE board of CD-619.)

Be sure to read "Precautions upon replacing CCD imager" on page 4-3 when changing the CCD imager.

5. REPAIR PARTS LIST

5-1-5. CABINET (FRONT) SECTION

ns : not supplied

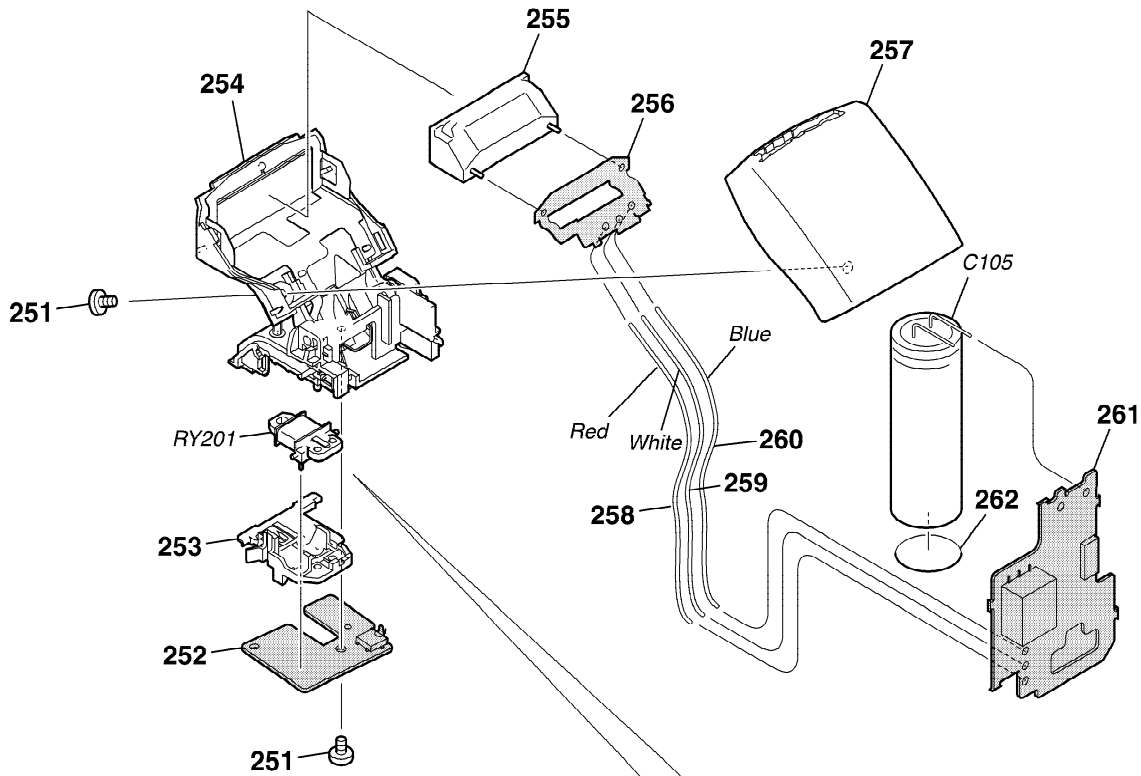


Ref. No.	Part No.	Description
201	X-2108-906-1	CABINET (FRONT) ASSY
202	3-080-204-11	SCREW, TAPPING, P2
203	2-673-230-01	SCREW, TRIPOD
* 204	2-673-328-01	SHEET METAL (R), STRAP
205	2-673-324-01	RING, ORNAMENTAL
206	2-673-323-01	RING, LENS
207	2-673-325-01	GRIP
208	X-2108-325-1	RELEASE ASSY
209	2-673-301-01	BUTTON, FB
* 210	2-673-305-01	PLATE, GRIP GROUND

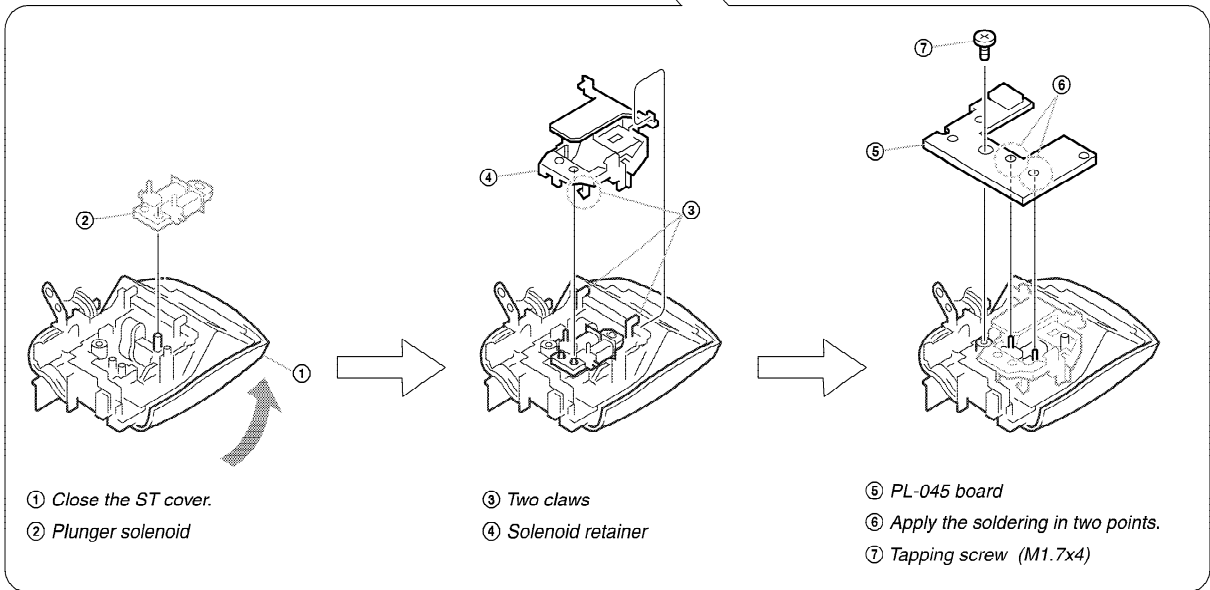
Ref. No.	Part No.	Description
* 211	2-673-302-01	HOLDER, AF
212	1-831-558-11	FLEXIBLE FLAT CABLE (ST-003)
213	1-479-699-11	SWITCH BLOCK, CONTROL
* 214	2-673-335-01	CUSHION, MICROPHONE
* 215	2-673-334-01	HOLDER, MICROPHONE
216	A-1176-913-A	AF-105 FLEXIBLE BOARD
* 217	2-678-097-01	CUSHION (B), MICROPHONE
* 218	2-672-563-01	SHEET (LNS), RADIATION
MIC9001	1-542-618-21	MICROPHONE

5. REPAIR PARTS LIST

5-1-6. ST SECTION



PRECAUTION DURING SOLENOID PLUNGER INSTALLATION



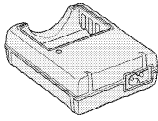
Ref. No.	Part No.	Description
251	3-080-204-11	SCREW, TAPPING, P2
252	A-1176-908-A	PL-045 BOARD, COMPLETE
253	2-629-818-01	RETAINER, SOLENOID
254	X-2108-912-1	BASE ASSY, ST
△255	1-479-553-11	FLASH UNIT
256	A-1176-914-A	ST-144 BOARD, COMPLETE
257	2-673-326-01	COVER, ST

Ref. No.	Part No.	Description
258	1-964-411-11	HARNESS (HA-004) (RED)
259	1-964-411-21	HARNESS (HA-004) (WHITE)
260	1-964-411-31	HARNESS (HA-004) (BLUE)
261	A-1176-909-A	ST-142 BOARD, COMPLETE
* 262	2-678-098-01	SHEET, ST ELECTROSTATIC
△C105	1-112-763-11	CAP, ELECT 320uF 330V
RY201	1-455-038-11	SOLENOID, PLUNGER

5. REPAIR PARTS LIST

Checking supplied accessories.

Make sure that the following accessories are supplied with your camcorder.



△ Ni-MH battery charger BC-CS2A/CS2B (1)
(US,CND,JE model)

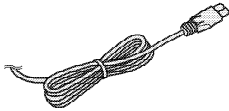
1-479-378-11

△ Ni-MH battery charger BC-CS2A/CS2B (1)
(AEP,UK,E,AUS,HK,AR model)

1-479-378-21

△ Ni-MH battery charger BC-CS2A/CS2B (1)
(KR,CH model)

1-479-378-31



△ Power cord (Mains lead) (1)
(US,CND model)

1-790-107-51

△ Power cord (Mains lead) (1)
(AEP,E model)

1-824-910-31

△ Power cord (Mains lead) (1)
(AUS model)

1-827-945-41

△ Power cord (Mains lead) (1)
(KR model)

1-823-947-51

△ Power cord (Mains lead) (1)
(UK model)

1-827-269-22

△ Power cord (Mains lead) (1)
(HK model)

1-783-374-22

△ Power cord (Mains lead) (1)
(AR model)

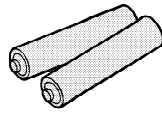
1-783-952-51

△ Power cord (Mains lead) (1)
(CH model)

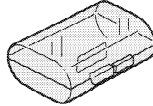
1-782-476-41

△ Power cord (Mains lead) (1)
(JE model)

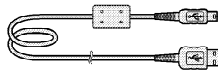
1-792-549-31



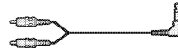
HR6 (size AA) Nickel-Metal
Hydride batteries (2)
(not supplied)



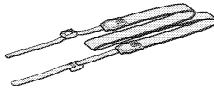
Battery case (1)
3-074-757-01



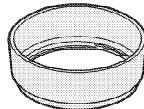
USB cable (1)
1-829-868-41



AV cable (1)
1-824-519-11



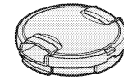
Shoulder strap (1)
2-629-892-01



Lens hood (1)
2-629-860-01



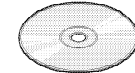
Adaptor ring (1)
2-629-861-01



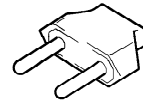
Lens cap (1)
X-2055-960-1



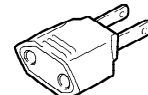
Lens cap strap (1)
3-979-194-31



CD-ROM
(Cyber-shot application software) (1)
2-666-673-01



2-pin conversion adaptor (1)
(JE model)
1-569-007-12



2-pin conversion adaptor (1)
(E model)
1-569-008-12

Other accessories

2-673-164-11	INSTRUCTION (READ THIS FIRST) (ENGLISH) (US,CND,AEP,UK,E,HK,AUS,JE)	2-673-166-11	INSTRUCTION (USER'S GUIDE) (ENGLISH) (US,CND,AEP,UK,E,HK,AUS,JE)
2-673-164-21	INSTRUCTION (READ THIS FIRST) (FRENCH/ITALIAN)(CND,AEP)	2-673-166-21	INSTRUCTION (USER'S GUIDE) (FRENCH/ITALIAN) (CND,AEP)
2-673-164-31	INSTRUCTION (READ THIS FIRST) (SPANISH/PORTUGUESE)(AEP,E,AR,JE)	2-673-166-31	INSTRUCTION (USER'S GUIDE) (SPANISH/PORTUGUESE)(AEP,E,AR,JE)
2-673-164-41	INSTRUCTION (READ THIS FIRST) (GERMAN/DUTCH) (AEP)	2-673-166-41	INSTRUCTION (USER'S GUIDE) (GERMAN/DUTCH)(AEP)
2-673-164-51	INSTRUCTION (READ THIS FIRST) (TRADITIONAL CHINESE/SIMPLIFIED CHINESE)(E,HK,CH,JE)	2-673-166-51	INSTRUCTION (USER'S GUIDE) (TRADITIONAL CHINESE/SIMPLIFIED CHINESE)(E,HK,CH,JE)
2-673-164-61	INSTRUCTION (READ THIS FIRST) (RUSSIAN)(AEP)	2-673-166-61	INSTRUCTION (USER'S GUIDE) (RUSSIAN)(AEP)
2-673-164-71	INSTRUCTION (READ THIS FIRST) (ARABIC/PERSIAN)(E)	2-673-166-71	INSTRUCTION (USER'S GUIDE) (ARABIC/PERSIAN)(E)
2-673-164-81	INSTRUCTION (READ THIS FIRST) (KOREAN)(KR,JE)	2-673-166-81	INSTRUCTION (USER'S GUIDE) (KOREAN)(KR,JE)
2-673-164-91	INSTRUCTION (READ THIS FIRST) (CZECH/POLISH) (AEP)	2-673-166-91	INSTRUCTION (USER'S GUIDE) (POLISH/CZECH)(AEP)
2-673-165-11	INSTRUCTION (READ THIS FIRST) (HUNGARIAN/SLOVAK)(AEP)	2-673-167-11	INSTRUCTION (USER'S GUIDE) (HUNGARIAN/SLOVAK) (AEP)
2-673-165-21	INSTRUCTION (READ THIS FIRST) (SWEDISH/FINNISH) (AEP)	2-673-167-21	INSTRUCTION (USER'S GUIDE) (SWEDISH/FINNISH) (AEP)
2-673-165-31	INSTRUCTION (READ THIS FIRST) (NORWEGIAN/DANISH)(AEP)	2-673-167-31	INSTRUCTION (USER'S GUIDE) (NORWEGIAN/DANISH) (AEP)

5-2. ELECTRICAL PARTS LIST

Ref. No.	Part No.	Description
	A-1176-913-A	AF-105 FLEXIBLE BOARD, COMPLETE ***** (D001 is not included in this COMPLETE board.)
		< DIODE >
D001	Not supplied	DIODE DOR5073 (AF LED)
		< SWITCH >
S001	1-762-805-21	SWITCH, PUSH (1 KEY) (LENS COVER OPEN)
	A-1176-911-A	CD-619 BOARD, COMPLETE ***** (IC002 is not included in this COMPLETE board.)
		< CAPACITOR >
C002	1-164-943-81	CERAMIC CHIP 0.01uF 10% 16V
C004	1-107-826-11	CERAMIC CHIP 0.1uF 10% 16V
C005	1-107-826-11	CERAMIC CHIP 0.1uF 10% 16V
C006	1-107-826-11	CERAMIC CHIP 0.1uF 10% 16V
C007	1-107-826-11	CERAMIC CHIP 0.1uF 10% 16V
		< CONNECTOR >
* CN001	1-816-057-51	CONNECTOR, FPC (ZIF) 39P
		< FERRITE BEAD >
FB001	1-400-620-21	INDUCTOR, FERRITE BEAD (1005)
		< IC >
IC001	8-753-230-85	IC CXA3691EN-T9
IC002	A-1176-034-A	CCD BLOCK ASSY (CCD IMAGER) (IC002 is not included in this COMPLETE of CD-619 board.)
		< TRANSISTOR >
Q001	6-550-119-01	TRANSISTOR DTC144EMT2L
		< RESISTOR >
R002	1-218-990-81	SHORT CHIP 0
R003	1-218-982-11	RES-CHIP 270K 5% 1/16W
R004	1-218-989-11	RES-CHIP 1M 5% 1/16W
R007	1-218-981-11	RES-CHIP 220K 5% 1/16W
R009	1-218-954-11	RES-CHIP 1.2K 5% 1/16W
	A-1176-915-A	JK-306 FLEXIBLE BOARD, COMPLETE *****
		< CONNECTOR >
CN001	1-794-962-11	CONNECTOR, SQUARE TYPE (USB 5P)
		< JACK >
J001	1-793-620-41	JACK (A/V OUT)

Be sure to read "Precautions upon replacing CCD imager" on page 4-1 when changing the CCD imager.

Ref. No.	Part No.	Description
	A-1176-912-A	MS-307 BOARD, COMPLETE *****
		< CAPACITOR >
C301	1-100-786-91	TANTAL. CHIP 22uF 20% 6.3V
C302	1-125-777-11	CERAMIC CHIP 0.1uF 10% 10V
		< CONNECTOR >
* CN301	1-816-644-51	FFC/FPC CONNECTOR (LIF) 12P
CN302	1-817-827-11	MEMORY STICK DUO CONNECTOR
		< FERRITE BEAD >
FB301	1-469-581-21	INDUCTOR, FERRITE BEAD (1005)
FB302	1-469-581-21	INDUCTOR, FERRITE BEAD (1005)
FB303	1-469-581-21	INDUCTOR, FERRITE BEAD (1005)
FB304	1-469-581-21	INDUCTOR, FERRITE BEAD (1005)
		< RESISTOR >
R302	1-218-953-11	RES-CHIP 1K 5% 1/16W
R303	1-218-940-11	RES-CHIP 82 5% 1/16W
R304	1-218-940-11	RES-CHIP 82 5% 1/16W
R305	1-218-990-81	SHORT CHIP 0
R306	1-218-990-81	SHORT CHIP 0
	A-1176-908-A	PL-045 BOARD, COMPLETE ***** (RY201 is not included in this COMPLETE of PL-045 board.)
		< CAPACITOR >
C201	1-165-908-11	CERAMIC CHIP 1uF 10% 10V
		< CONNECTOR >
* CN201	1-816-654-51	FFC/FPC CONNECTOR (LIF) 6P
		< DIODE >
D202	8-719-988-61	DIODE 1SS355TE-17
D203	6-500-776-01	DIODE MAZW068H0LS0
		< RELAY >
RY201	1-455-038-11	SOLENOID, PLANGER
		< SWITCH >
S201	1-786-179-31	SWITCH, PUSH (1KEY)(FLASH POP UP)
	A-1176-909-A	ST-142 BOARD, COMPLETE ***** (C105 is not included in this COMPLETE of ST-142 board.)
		< CAPACITOR >
C101	1-100-611-91	CERAMIC CHIP 22uF 20% 6.3V
C102	1-100-611-91	CERAMIC CHIP 22uF 20% 6.3V
C103	1-165-908-11	CERAMIC CHIP 1uF 10% 10V
△C105	1-112-763-11	ELECT 320uF 330V
C106	1-100-611-91	CERAMIC CHIP 22uF 20% 6.3V

• Refer to page 5-1 for mark △.

Ref. No.	Part No.	Description
		< CONNECTOR >
* CN101	1-816-644-51	FFC/FPC CONNECTOR (LIF) 12P
		< DIODE >
D101	8-719-056-54	DIODE MAZS068008SO
△D102	6-501-096-01	DIODE CRF02 (TE85R)
		< IC >
IC101	6-707-555-01	IC TPS65552RGTR
		< COIL >
L101	1-456-995-22	INDUCTOR 4.7uH
		< TRANSISTOR >
Q101	6-550-891-01	TRANSISTOR GT8G133 (T2LSONY.Q)
		< RESISTOR >
R103	1-243-975-11	METAL CHIP 4.7M 5% 1/16W
R104	1-218-935-11	RES-CHIP 33 5% 1/16W
		< TRANSFORMER >
△T101	1-443-850-21	DC-DC CONVERTER TRANSFORMER
	A-1176-914-A	ST-144 BOARD, COMPLETE *****
		< CAPACITOR >
C002	1-100-758-11	CERAMIC CHIP 0.047uF 10% 250V
C003	1-100-761-21	CERAMIC CHIP 0.01uF 10% 250V
		< DIODE >
D001	6-500-811-01	DIODE RR255L-400TE25
		< COIL >
L001	1-456-193-11	COIL, TRIGGER
		< RESISTOR >
R001	1-216-121-11	RES-CHIP 1M 5% 1/10W
R002	1-216-097-11	RES-CHIP 100K 5% 1/10W
	A-1176-910-A	SW-473 BOARD, COMPLETE *****
		< CAPACITOR >
C402	1-117-919-11	TANTAL. CHIP 10uF 20% 6.3V
C405	1-100-743-91	CERAMIC CHIP 2.2uF 20% 16V
C406	1-127-760-11	CERAMIC CHIP 4.7uF 10% 6.3V
C408	1-100-966-91	CERAMIC CHIP 10uF 20% 10V
C409	1-115-467-11	CERAMIC CHIP 0.22uF 10% 10V
		< CONNECTOR >
* CN401	1-815-333-51	CONNECTOR, FPC (ZIF) 33P
* CN402	1-816-654-51	FFC/FPC CONNECTOR (LIF) 6P
* CN403	1-815-333-51	CONNECTOR, FPC (ZIF) 33P

Ref. No.	Part No.	Description
		< DIODE >
D501	8-719-056-23	DIODE MA2S111-(K8).SO
D502	6-500-776-01	DIODE MAZW068H0LS0
D503	8-719-064-07	DIODE SML-310LTT86 (ACCESS)
		< COIL >
L402	1-400-588-11	INDUCTOR 10uH
L403	1-400-588-11	INDUCTOR 10uH
		< RESISTOR >
R405	1-218-973-11	RES-CHIP 47K 5% 1/16W
R501	1-218-962-11	RES-CHIP 5.6K 5% 1/16W
R502	1-218-970-11	RES-CHIP 27K 5% 1/16W
R503	1-218-962-11	RES-CHIP 5.6K 5% 1/16W
R504	1-218-970-11	RES-CHIP 27K 5% 1/16W
R505	1-208-671-11	METAL CHIP 330 0.5% 1/16W
		< COMPOSITION CIRCUIT BLOCK >
RB501	1-234-376-11	RES, NETWORK 2.2K (1005X4)
RB502	1-234-376-11	RES, NETWORK 2.2K (1005X4)
		< SWITCH >
S501	1-786-157-11	SWITCH, TACTILE (MENU)
S502	1-786-157-11	SWITCH, TACTILE (DISP)
S503	1-786-157-11	SWITCH, TACTILE (LEFT)
S504	1-786-525-31	TACTILE SWITCH (ZOOM W)
S505	1-786-157-11	SWITCH, TACTILE (UP)
S506	1-786-157-11	SWITCH, TACTILE (SET)
S507	1-786-157-11	SWITCH, TACTILE (DOWN)
S508	1-786-525-31	TACTILE SWITCH (ZOOM T)
S509	1-786-157-31	SWITCH, TACTILE (DUST)
S510	1-786-157-11	SWITCH, TACTILE (RIGHT)

SY-150 BOARD, COMPLETE

Electrical parts list of the SY-150 board is not shown.

Pages from 5-12 to 5-15 are not shown.

• Refer to page 5-1 for mark △.