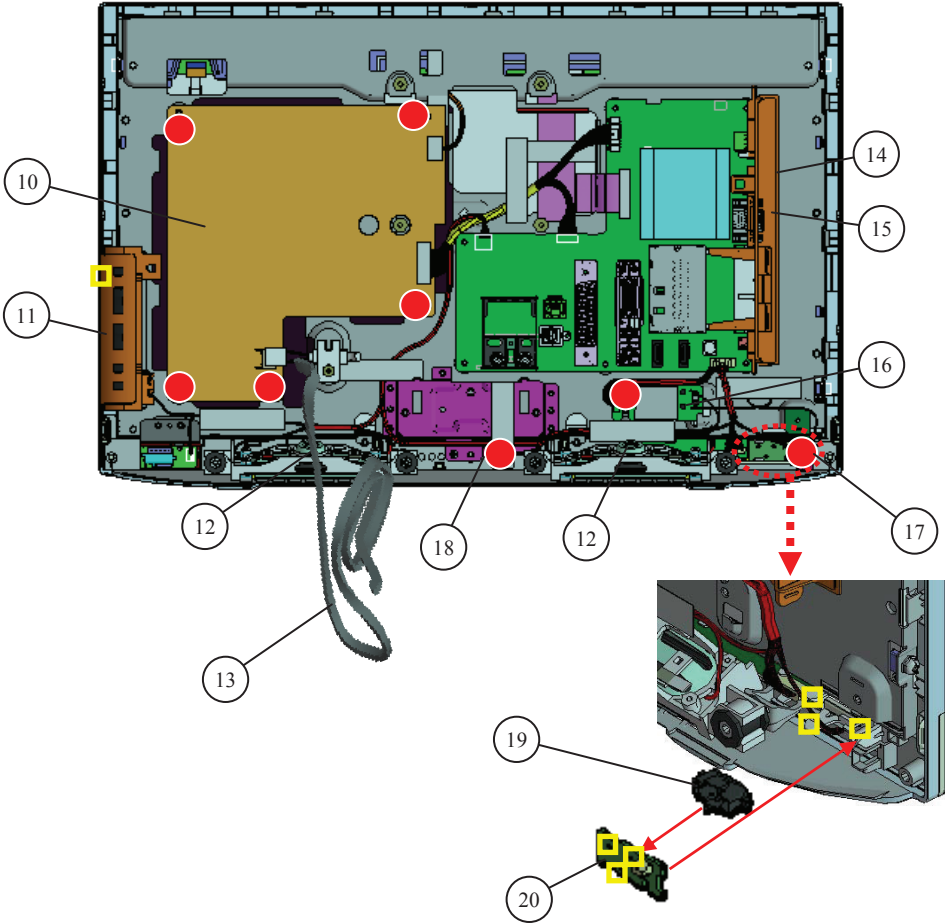


1-1. KDL-22EX320/325

1-1-3. G1A BOARD, SPEAKER, SWITCH UNIT, HMS3 BOARD, WIFI MODULE AND SIDE BRACKET

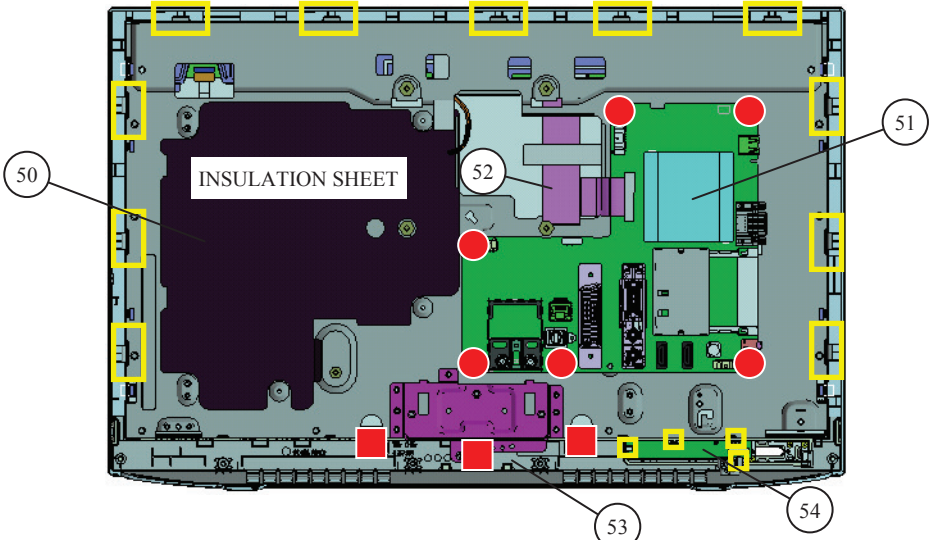


REF. No.	PART No.	DESCRIPTION	REMARK
10	△ WS0000401	STATIC CONVERTER (TV)-G1A	
11	WS0000701	SWITCH UNIT	
12	WS0002501	LOUDSPEAKER 30X100MM	
13	△ WS0005901	POWER-SUPPLY CORD (WITH CONN.)	
	△ WS0014701	POWER-SUPPLY CORD (WITH CONN., UK ONLY)	
14	WS0010601	BRACKET SIDE (22/24/26)	
15	WS0006201	LABEL (BAT-S MOLD SIDE)	
16	WS0000101	WIRELESS LAN CARD	
	WS0000201	WIRELESS LAN CARD	RUSSIA ONLY
17	WS0001001	ANTENNA	
18	WS0001101	ANTENNA	
19	WS0002301	FRENEL LENS	
20	WS0013701	HMS3 COMPLETE	

● WS0006001 SCREW (+PSW) (M3X6)

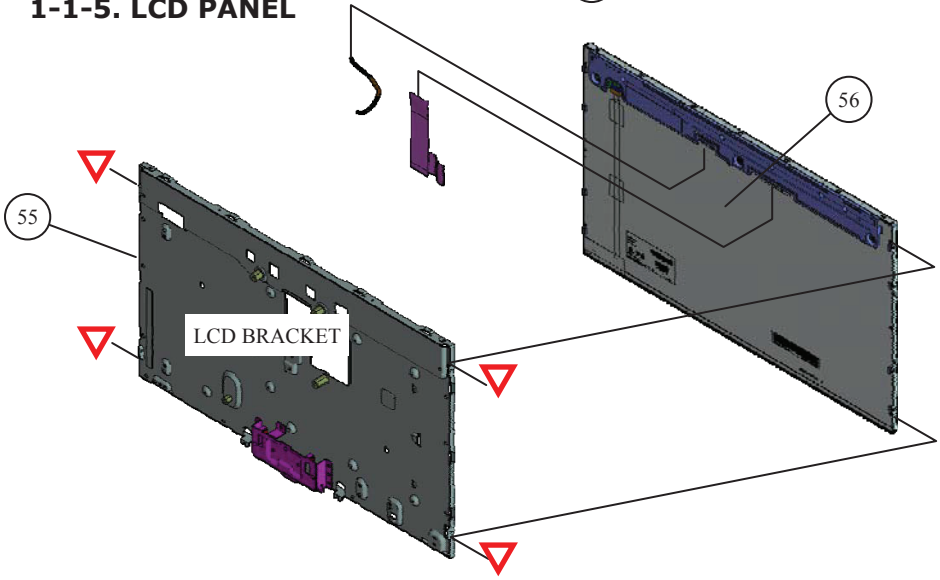
1-1. KDL-22EX320/325

1-1-4. BATS BOARD, BEZEL, HLR2 BOARD



REF. No.	PART No.	DESCRIPTION	REMARK
50	WS0021601	SHEET, INSULATION (G1)	
51	WS0012901	BATS COMPL (SERVICE)	EX320 AEP, RU
	WS0013101	BATS COMPL (SERVICE)	EX325 AEP
	WS0013001	BATS COMPL (SERVICE)	EX320 IT
52	WS0001901	FLEXIBLE FLAT CABLE I1 22WS	
53	WS0010701	BEZEL(22 SYR)	
54	WS0013601	HLR2 MOUNT(B-O-AEP)	
55	WS0006801	BRACKET, LCD (22)	
56	1-811-320-11	LCD PANEL (L216SDA2)	

1-1-5. LCD PANEL

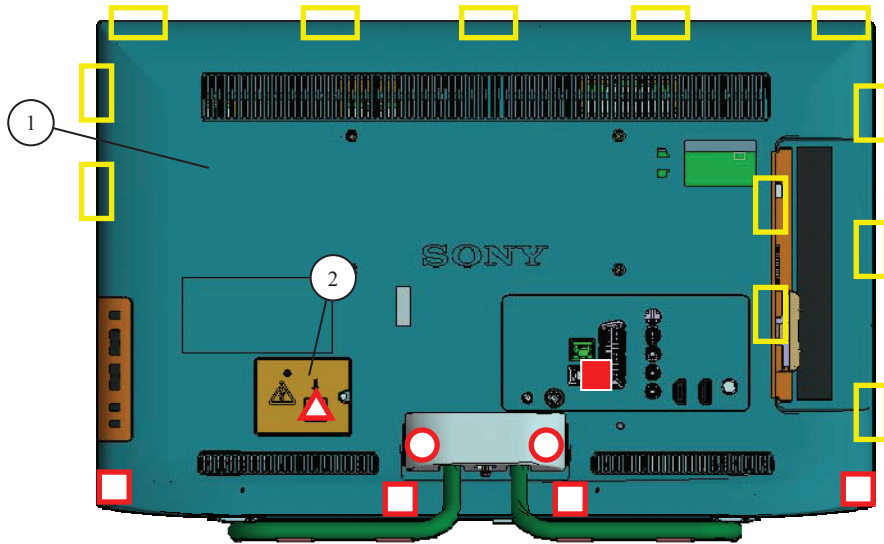


- ▽ WS0020701 SCREW, +PSW M3X8
- WS0010101 SCREW +BVTP 3X12 TYPE2 IT-3
- WS0006001 SCREW (+PSW) (M3X6)

Note:
 The Bezel and LCD panel use double sided tape during installation.
 Please refer to APPENDIX-2 for the correct procedure for disassembly and assembly methods.

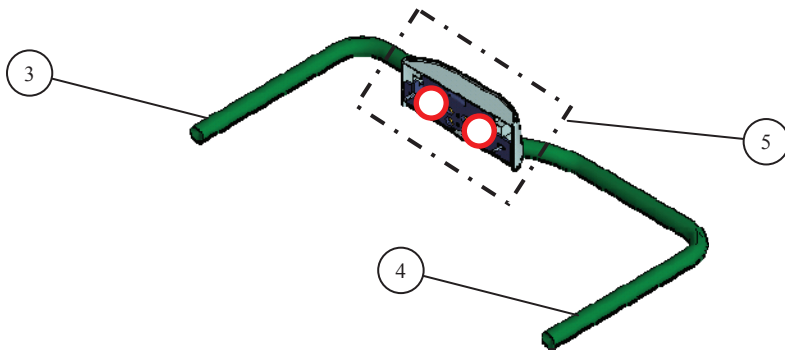
1-2. KDL-24EX320/325

1-2-1. STAND BLOCK. REAR COVER, AC COVER



REF. No.	PART No.	DESCRIPTION	REMARK
1	WS0012101	REAR COVER (24 SYR)	BLACK
	WS0012201	REAR COVER (24 SYR)	LIGHT GREY
	WS0012301	REAR COVER (24 SYR)	EX325
2	△ WS0010501	COVER, AC(S)	BLACK
	△ WS0012001	COVER, AC(S)	LIGHT GREY
3	WS0005101	STAND, PIPE L(S)	BLACK
	WS0005201	STAND, PIPE L(S)	WHITE
4	WS0005301	STAND, PIPE R(S)	BLACK
	WS0005401	STAND, PIPE R(S)	WHITE
5	WS0011101	STAND, HEAD P (SS)	BLACK
		STAND, HEAD P (SS)	WHITE

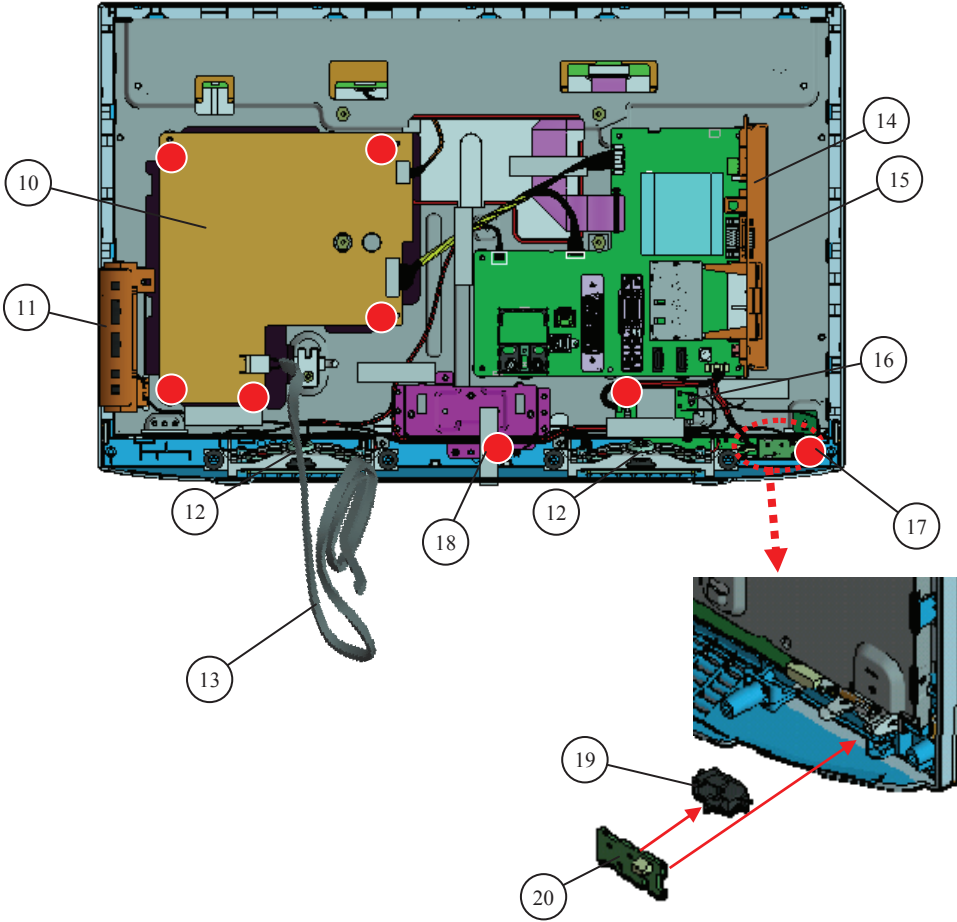
1-2-2. HEAD STAND, PIPE STAND



○	WS0002801	SCREW, +PSW M4X12	BLACK
○	WS0002801	SCREW, +PSW M4X12	LIGHT GREY
■	WS0010101	SCREW +BVTP 3X12 TYPE2 IT-3	
□	WS0005801	SCREW +BVTP 4X12 TYPE2 IT-3	BLACK
□		SCREW +BVTP 4X12 TYPE2 IT-3	LIGHT GREY
△	WS0003201	SCREW, +PSW M3X6 W12	BLACK
△	WS0020801	SCREW, +PSW M3X6 W12	LIGHT GREY

1-2. KDL-24EX320/325

1-2-3. G1B BOARD, SPEAKER, SWITCH UNIT, HMS3 BOARD, WIFI MODULE AND SIDE BRACKET

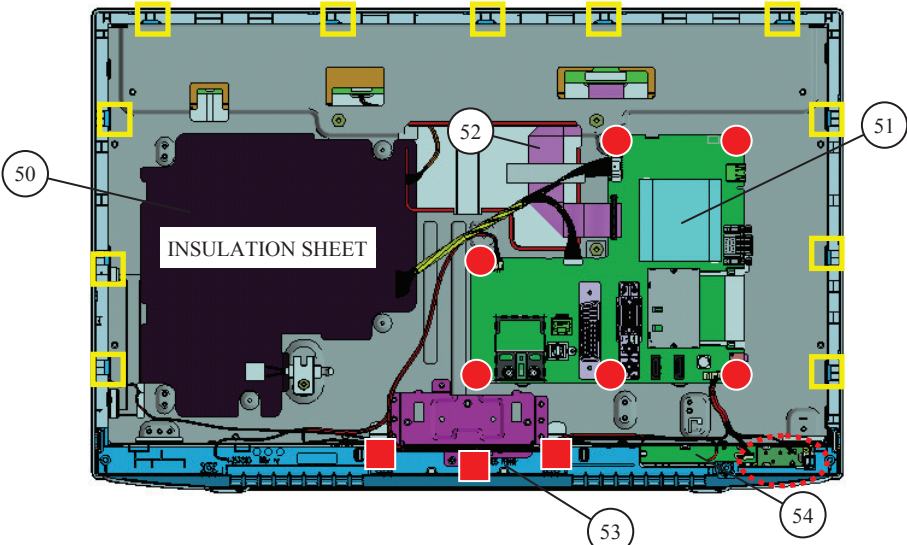


REF. No.	PART No.	DESCRIPTION	REMARK
10	△ WS0000501	STATIC CONVERTER (TV)-G1B	
11	WS0000701	SWITCH UNIT	BLACK
	WS0000801	SWITCH UNIT	LIGHT GREY
12	WS0002501	LOUDSPEAKER 30X100MM	
13	△ WS0005901	POWER-SUPPLY CORD (WITH CONN.)	
	△ WS0014701	POWER-SUPPLY CORD (WITH CONN.)	UK ONLY
14	WS0010601	BRACKET SIDE (22/24/26)	BLACK
	WS0006701	BRACKET SIDE (22/24/26)	LIGHT GREY
15	WS0006201	LABEL (BAT-S MOLD SIDE)	BLACK
	WS0006301	LABEL (BAT-S MOLD SIDE)	WHITE
16	WS0000101	WIRELESS LAN CARD	
	WS0000201	WIRELESS LAN CARD	RUSSIA ONLY
17	WS0001001	ANTENNA	
18	WS0001101	ANTENNA	
19	WS0002301	FRENEL LENS	BLACK
	WS0002401	FRENEL LENS	WHITE
20	WS0013701	HMS3 COMPLETE	




● WS0006001 SCREW (+PSW) (M3X6)

1-2. KDL-24EX320/325

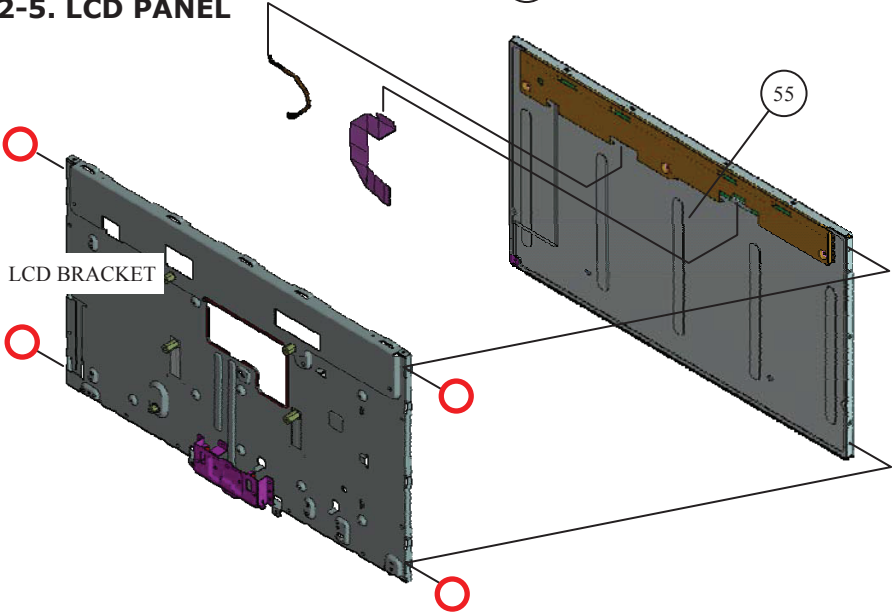
1-2-4. BATS BOARD, BEZEL, HLR2 BOARD



REF. No.	PART No.	DESCRIPTION	REMARK
50	WS0021601	SHEET, INSULATION (G1)	
51	WS0013901	BATS COMPL (SERVICE)	EX320 AEP, RU
	WS0015401	BATS COMPL (SERVICE)	EX325 AEP
	WS0014001	BATS COMPL (SERVICE)	EX320 IT
52	WS0002701	FLEXIBLE PRINT CIRCUIT I1 24S	
53	WS0009701	BEZEL(24 SYR)	BLACK
	WS0009801	BEZEL(24 SYR)	WHITE
54	WS0013601	HLR2 MOUNT(B-O-AEP)	BLACK
	WS0013801	HLR2 MOUNT(W-O-AEP)	WHITE
55	1-811-316-11	LCD PANEL (A24V0)	

-  WS0002801 SCREW, +PSW M4X12
-  WS0010101 SCREW +BVTP 3X12 TYPE2 IT-3
-  WS0006001 SCREW (+PSW) (M3X6)

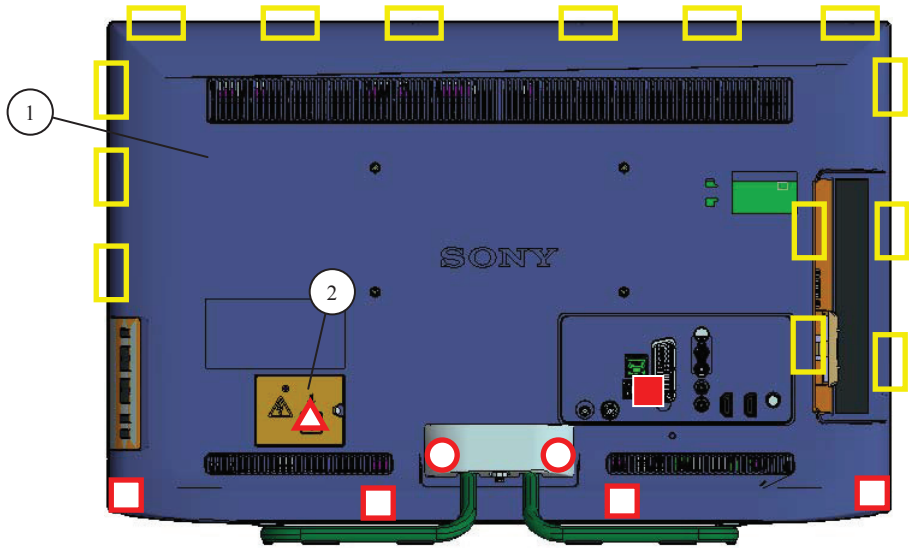
1-2-5. LCD PANEL



Note:
 The Bezel and LCD panel use double sided tape during installation.
 Please refer to APPENDIX-2 for the correct procedure for disassembly and assembly methods.

1-3. KDL-26EX320/321/325

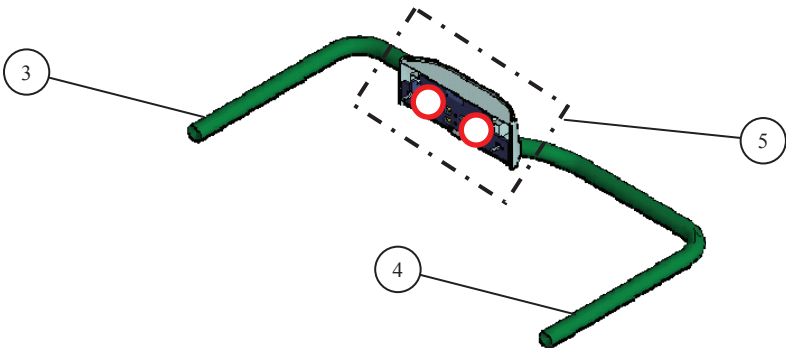
1-3-1. STAND BLOCK, REAR COVER, AC COVER



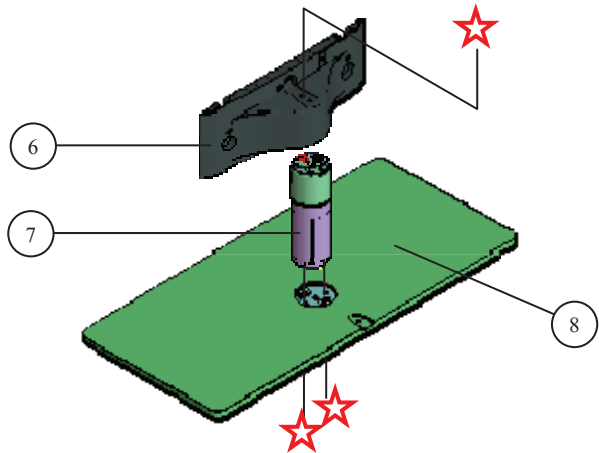
REF. No.	PART No.	DESCRIPTION	REMARK
1	WS0010801	REAR COVER (26 SYR)	
	WS0010901	REAR COVER (26 SYR)	EX325
2	△ WS0010501	COVER, AC(S)	
3	WS0005101	STAND, PIPE L(S)	
4	WS0005301	STAND, PIPE R(S)	
5	WS0011101	STAND, HEAD P (SS)	
6	WS0011001	STAND, HEAD(S2)	
7	WS0021101	NECK(S2)	
8	WS0004501	STAND, BASE(M2)	

- WS0002801 SCREW, +PSW M4X12
- WS0010101 SCREW +BVTP 3X12 TYPE2 IT-3
- WS0005801 SCREW +BVTP 4X12 TYPE2 IT-3
- △ WS0003201 SCREW, +PSW M3X6 W12
- ☆ WS0007001 USER SCREW ST

1-3-2a. HEAD STAND, PIPE STAND (EX320/EX325)

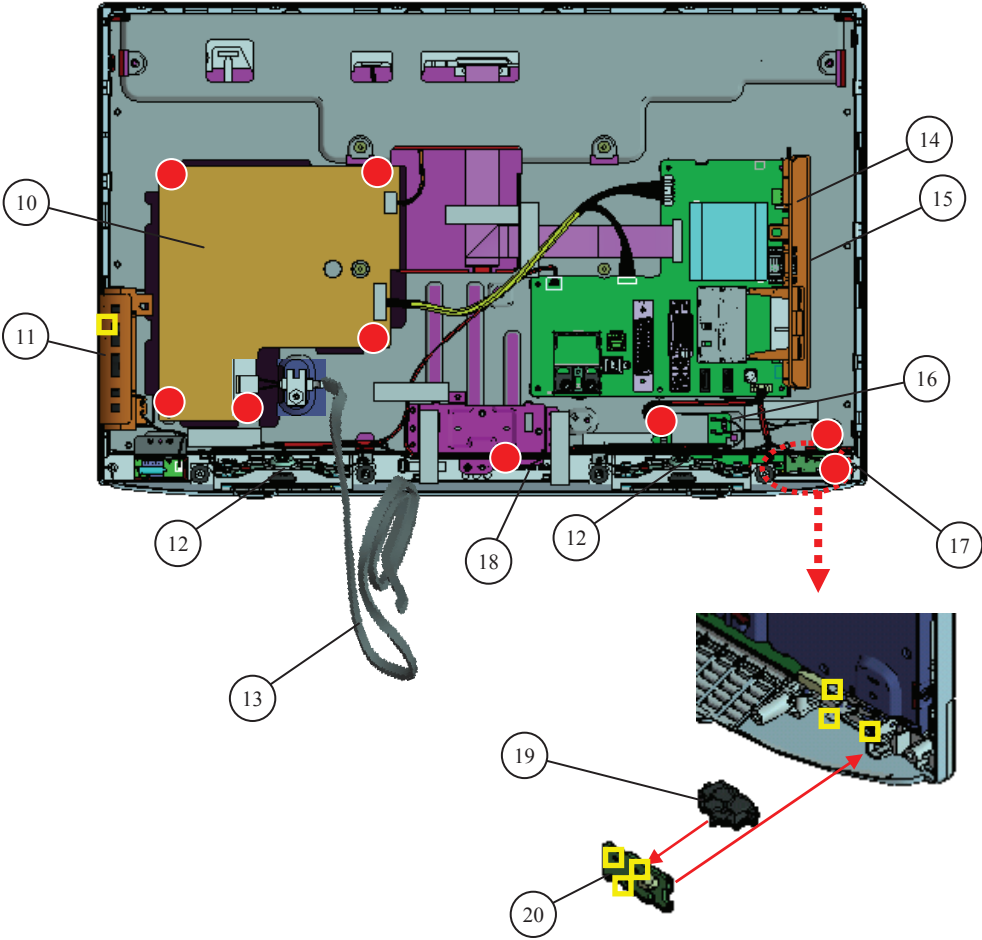


1-3-2b. HEAD STAND, NECK AND BASE STAND (EX321)



1-3. KDL-26EX320/321/325

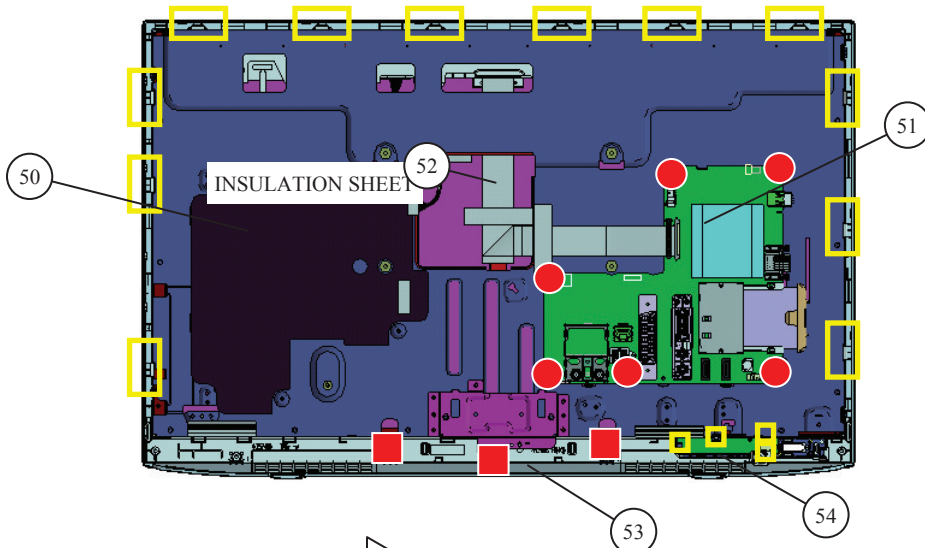
1-3-3. G1B BOARD, SPEAKER, SWITCH UNIT, HMS3 BOARD, WIFI MODULE






REF. No.	PART No.	DESCRIPTION	REMARK
10	△ WS0000501	STATIC CONVERTER (TV)-G1B	
11	WS0000701	SWITCH UNIT	
12	WS0002501	LOUDSPEAKER 30X100MM	
13	△ WS0005901	POWER-SUPPLY CORD (WITH CONN.)	
	△ WS0014701	POWER-SUPPLY CORD (WITH CONN.)	UK ONLY
14	WS0010601	BRACKET SIDE (22/24/26)	
15	WS0006201	LABEL (BAT-S MOLD SIDE)	
16	WS0000101	WIRELESS LAN CARD	
	WS0000201	WIRELESS LAN CARD	RUSSIA ONLY
17	WS0001001	ANTENNA	
18	WS0001101	ANTENNA	
19	WS0002301	FRENEL LENS	
20	WS0013701	HMS3 COMPLETE	
	● WS0006001	SCREW (+PSW) (M3X6)	

1-3. KDL-26EX320/321/325

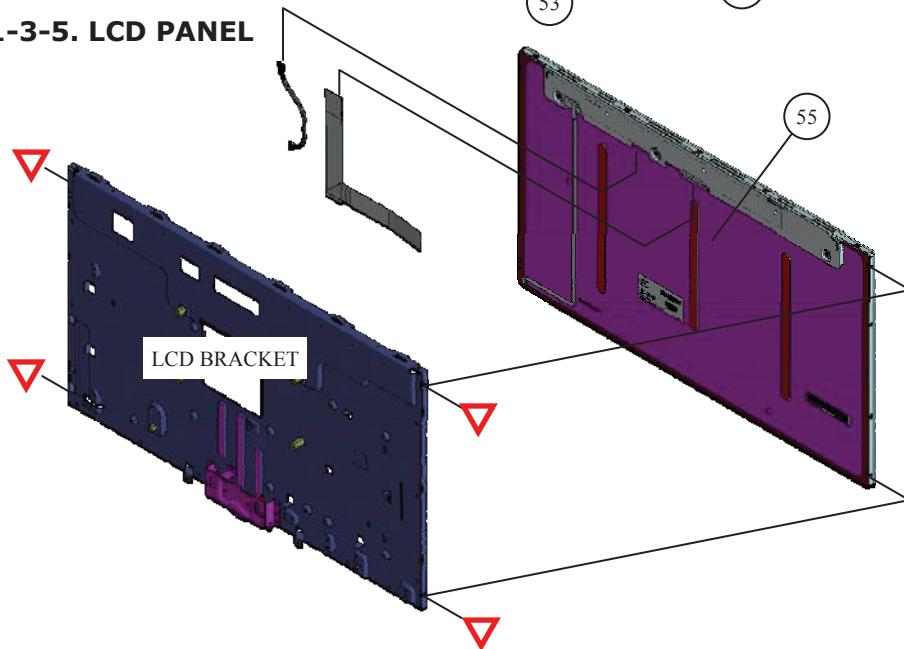
1-3-4. BATS BOARD, BEZEL, HLR2 BOARD



REF. No.	PART No.	DESCRIPTION	REMARK
50	WS0021601	SHEET, INSULATION (G1)	
51	WS0012901	BATS COMPL (SERVICE)	EX320/321 AEP, RU
	WS0013101	BATS COMPL (SERVICE)	EX325 AEP
	WS0013001	BATS COMPL (SERVICE)	EX320 IT
52	WS0002001	FLEXIBLE FLAT CABLE I1 26WS	
53	WS0011201	BEZEL(26 SYR)	
54	WS0013601	HLR2 MOUNT(B-O-AEP)	
55	1-811-321-11	LCD PANEL (L26SDA2)	

-  WS0020701 SCREW, +PSW M3X8
-  WS0010101 SCREW +BVTP 3X12 TYPE2 IT-3
-  WS0006001 SCREW (+PSW) (M3X6)

1-3-5. LCD PANEL



Note:
The Bezel and LCD panel use double sided tape during installation. Please refer to APPENDIX-2 for the correct procedure for disassembly and assembly methods.