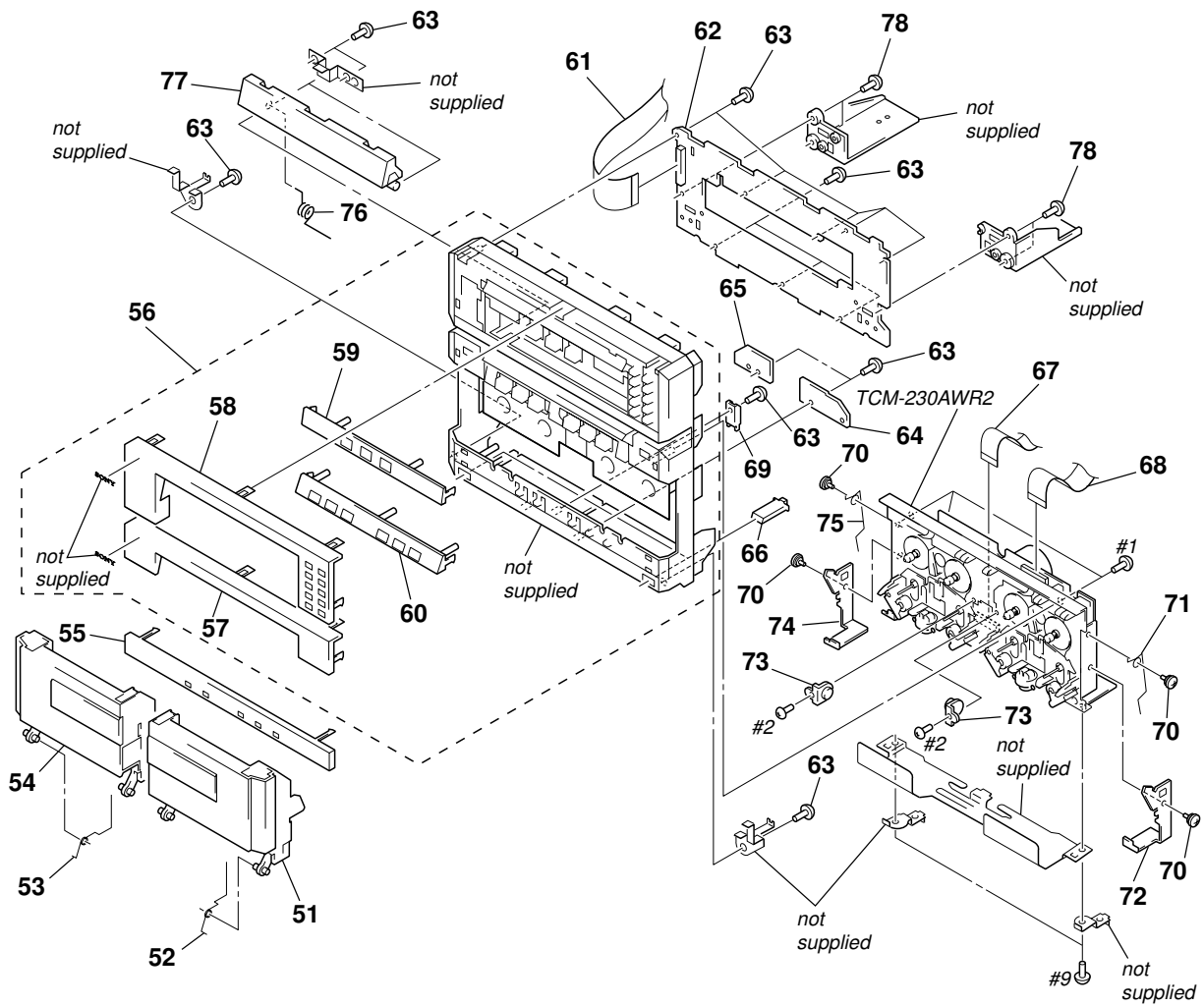


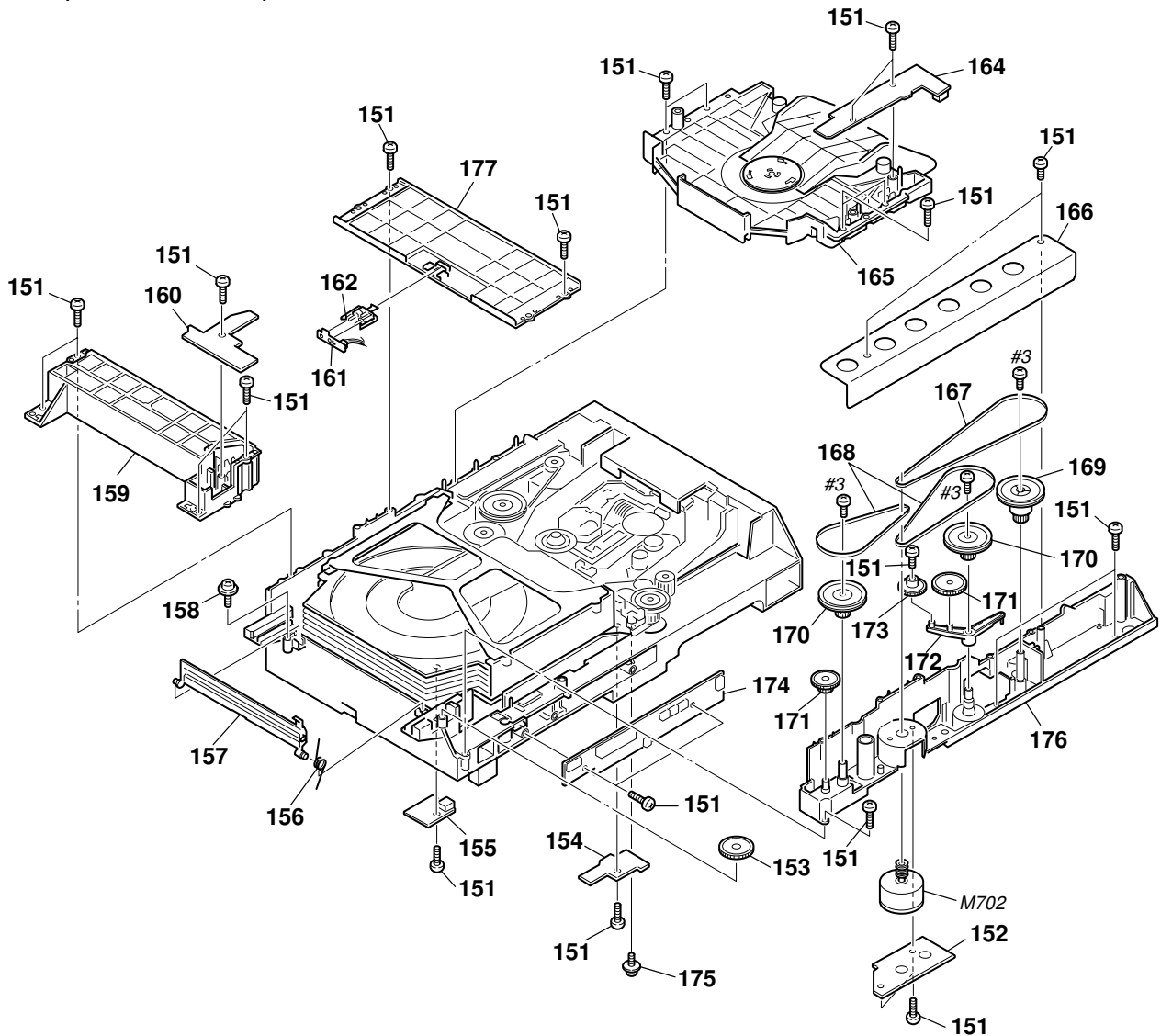


(2) FRONT PANEL SECTION



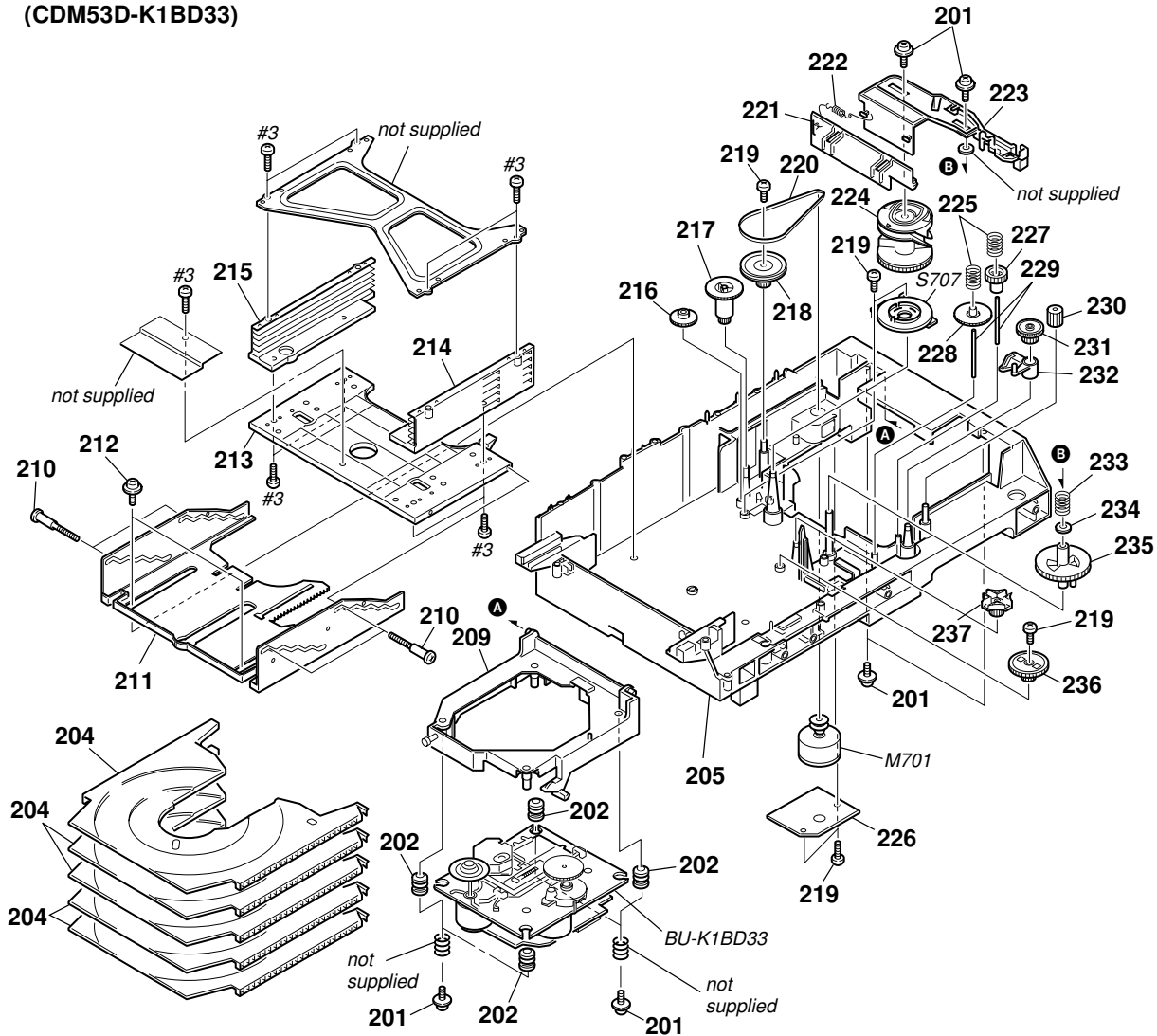
Ref. No.	Part No.	Description	Remark	Ref. No.	Part No.	Description	Remark
51	X-4951-821-1	HOLDER (B) ASSY, CASSETTE		65	1-674-773-11	PANEL TC-B BOARD	
52	4-221-448-01	SPRING (HOLDER B)		66	4-221-443-01	BUTTON, EJECT	
53	4-221-447-01	SPRING (HOLDER A)		67	1-773-004-11	WIRE (FLAT TYPE) (15 CORE)	
54	X-4951-820-1	HOLDER (A) ASSY, CASSETTE		68	1-773-044-11	WIRE (FLAT TYPE) (17 CORE) (16cm)	
55	4-221-434-01	PANEL (TC2), SUB		69	4-221-444-01	PLATE	
56	X-4951-818-1	PANEL ASSY, FRONT		70	4-223-952-01	SCREW, STEP	
57	4-221-433-01	PANEL (TC1), SUB		71	4-221-450-01	SPRING (EJECT B)	
58	4-221-432-01	PANEL (CD), SUB		72	4-221-446-01	LEVER (B), EJECT	
59	4-221-430-01	COVER (CD)		73	4-215-062-01	DAMPER	
60	4-221-431-01	COVER (TC)		74	4-221-445-01	LEVER (A), EJECT	
61	1-773-170-11	WIRE (FLAT TYPE) (21 CORE)		75	4-221-449-01	SPRING (EJECT A)	
62	A-4426-223-A	PANEL BOARD, COMPLETE (EXCEPT TH)		76	4-221-451-01	SPRING (CD)	
62	A-4426-942-A	PANEL BOARD, COMPLETE (TH)		77	4-221-442-01	LID, CD	
63	4-951-620-01	SCREW (2.6X8), +BVTP		78	4-951-620-11	SCREW (2.6 X 10), +BVTP	
64	1-674-772-11	PANEL TC-A BOARD					

**(3) CD MECHANISM DECK SECTION-1  
(CDM53D-K1BD33)**



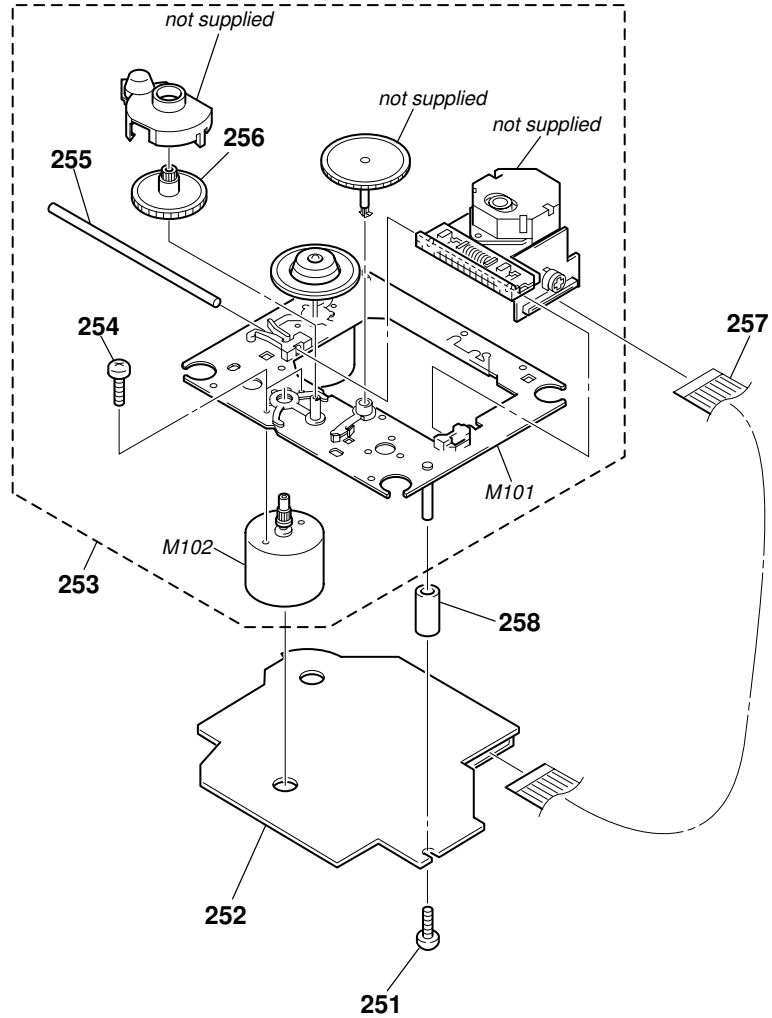
Ref. No.	Part No.	Description	Remark	Ref. No.	Part No.	Description	Remark
151	4-218-253-01	SCREW (M2.6), +BVTP		166	4-214-129-01	COVER	
* 152	1-671-508-21	LOAD MOTOR BOARD		167	4-211-235-01	BELT (COMMUNICATION)	
153	4-220-261-01	GEAR (EJECT)		168	4-211-236-01	BELT (LOADING)	
* 154	1-671-502-21	INT/COUNT SW BOARD		169	4-220-278-01	PULLEY (MODE)	
* 155	1-671-504-21	SENSOR BOARD		170	4-220-276-01	PULLEY (LD)	
156	4-212-676-03	SPRING (LID), TORSION		171	4-220-267-01	GEAR (LD DECELERATION)	
157	4-220-285-01	LID (DISC)		172	4-220-272-01	LEVER (GOOSENECK)	
158	4-985-672-01	SCREW (+PTPWH M2.6), FLOATING		173	4-220-271-01	GEAR (TRAY)	
159	A-4672-622-F	BASE (GUIDE) ASSY, FITTING		* 174	1-671-506-21	CONNECTOR BOARD	
* 160	1-671-503-21	OUT SW BOARD		175	3-341-549-21	SCREW (2.6X12) (DIA. 7.5), +PTP WH	
* 161	1-671-789-21	SENSOR 2 BOARD		176	4-213-488-04	CHASSIS (MOLD B)	
162	4-220-274-01	HOLDER (SENSOR)		177	4-213-579-01	BRACKET (CHASSIS)	
* 164	1-671-505-21	IN SW BOARD		M702	X-4950-342-1	MOTOR (LOADING) ASSY	
165	A-4680-437-A	MAGNET ASSY					

(4) CD MECHANISM DECK SECTION-2  
(CDM53D-K1BD33)



Ref. No.	Part No.	Description	Remark	Ref. No.	Part No.	Description	Remark
201	4-985-672-01	SCREW (+PTPWH M2.6), FLOATING		224	4-220-275-01	GEAR (CHUCKING)	
202	4-220-933-01	INSULATOR		225	4-211-245-01	SPRING, COMPRESSION	
204	4-213-487-53	TRAY (SUB)		* 226	1-671-507-21	CLAMP MOTOR BOARD	
205	4-213-482-02	CHASSIS (MOLD A)		227	4-220-265-01	GEAR (LD MOVABLE)	
209	X-4950-322-3	HOLDER (BU) ASSY		228	4-220-269-01	GEAR (SELECTION)	
210	4-211-244-01	SCREW, STEP		229	4-211-242-01	SHAFT (SELECTION GEAR)	
211	4-211-223-04	SLIDER (U/D)		230	4-220-268-01	GEAR (LD DECELERATION B)	
212	4-933-134-01	SCREW (M2.6), +PTPWH		231	4-220-262-01	GEAR (RELAY)	
213	4-211-224-03	BASE (STOCKER), FITTING		232	4-220-273-01	LEVER (SELECTION)	
214	4-211-211-02	STOCKER (R)		233	4-216-879-01	SPRING (GEAR), COIL	
215	4-211-210-03	STOCKER (L)		234	3-701-446-21	WASHER	
216	4-220-261-01	GEAR (EJECT)		235	4-220-270-01	GEAR (GEAR A)	
217	4-220-266-01	GEAR (MODE DECELERATION)		236	4-220-264-01	GEAR (U/D SLIDER)	
218	4-220-276-01	PULLEY (LD)		237	4-220-263-01	GEAR (GEAR B)	
219	4-218-253-01	SCREW (M2.6), +BVTP		M701	X-4950-341-1	MOTOR (CLAMP) ASSY	(ELEVATOR UP/DOWN)
220	4-211-237-01	BELT (MODE)					
221	4-220-283-01	SLIDER (SHUTTER)		S707	1-418-045-01	ENCODER, ROTARY	(DISC TRAY ADDRESS DETECT)
222	4-212-678-01	SPRING (SHUTTER), TENSION					
223	4-220-284-01	SLIDER (SELECTION)					

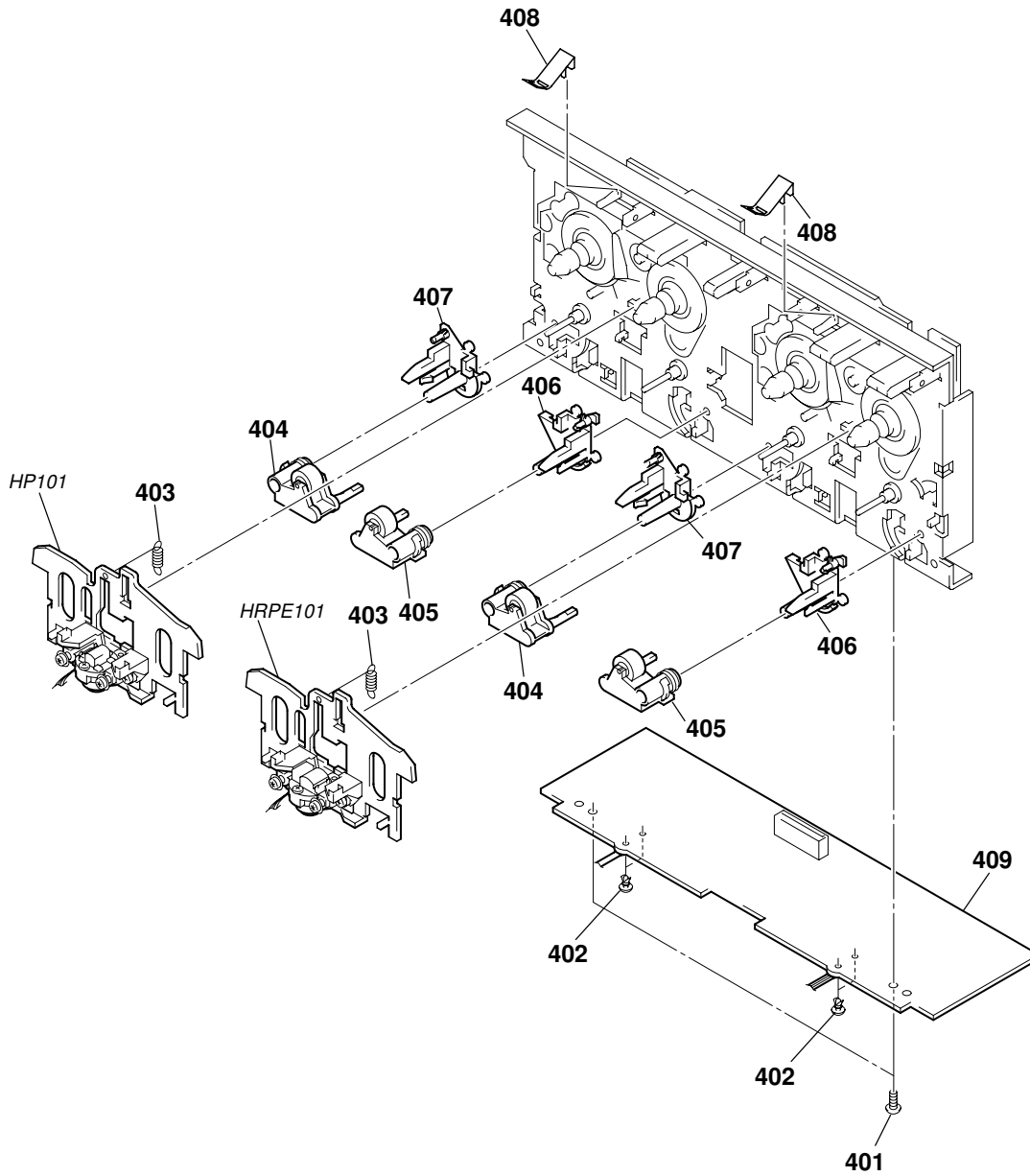
(5) CD BASE UNIT SECTION  
(BU-K1BD33)



<p>The components identified by mark <math>\triangle</math> or dotted line with mark <math>\triangle</math> are critical for safety. Replace only with part number specified.</p>	<p>Les composants identifiés par une marque <math>\triangle</math> sont critiques pour la sécurité. Ne les remplacer que par une pièce portant le numéro spécifié.</p>
---	--

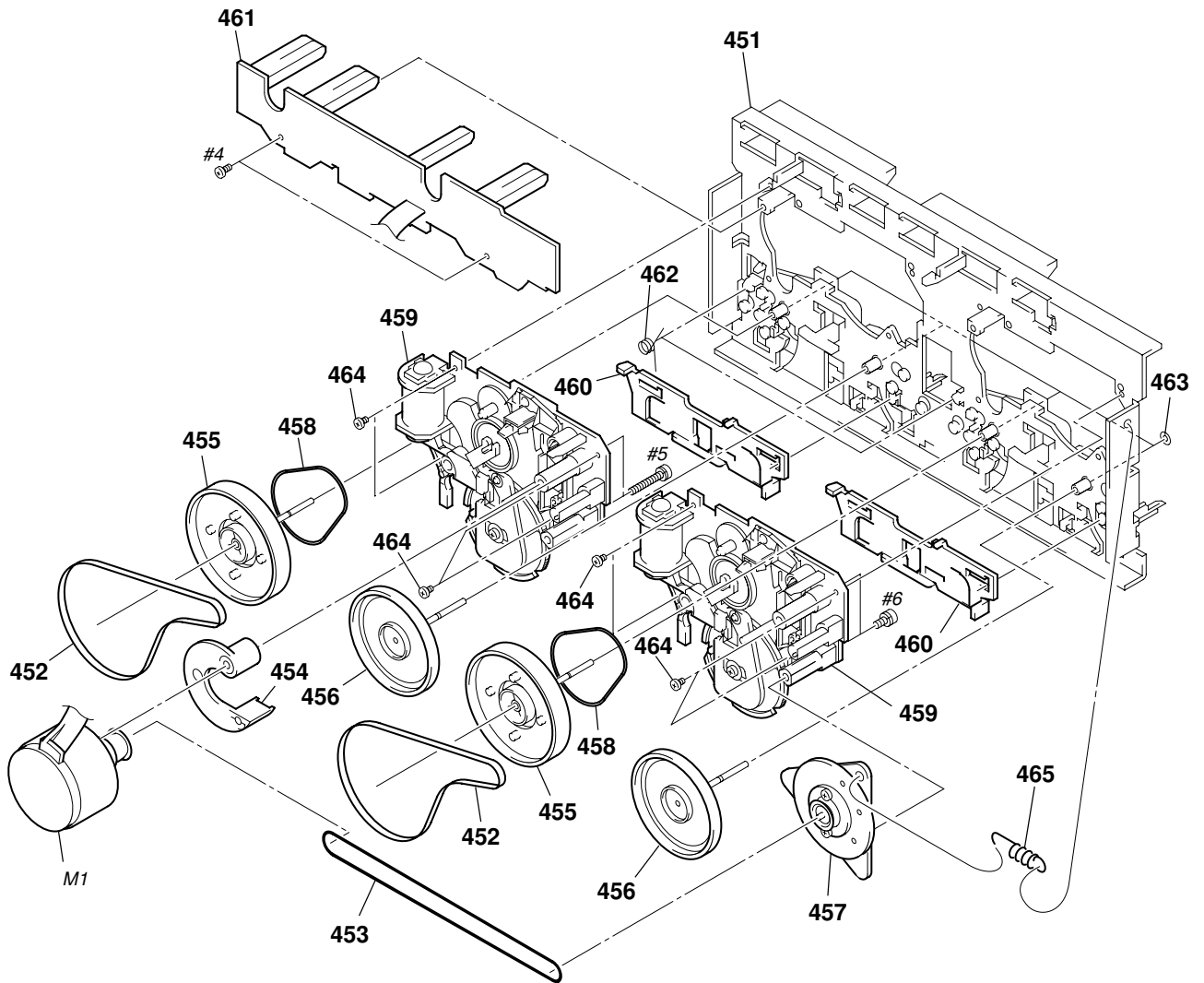
Ref. No.	Part No.	Description	Remark	Ref. No.	Part No.	Description	Remark
251	4-996-243-01	SCREW (M2), +PSW		256	2-627-003-02	GEAR (B) (RP)	
252	A-4724-330-A	BD BOARD, COMPLETE		257	1-769-069-11	WIRE (FLAT TYPE) (16 CORE)	
$\triangle$ 253	8-820-026-03	OPTICAL PICK-UP KSM-213BFN/C2NP		258	4-216-878-11	COLLAR	
254	3-713-786-51	SCREW +P 2X3		M101	X-2646-110-3	MOTOR ASSY, SPINDLE	
255	2-626-908-01	SHAFT, SLED		M102	X-2625-769-1	MOTOR ASSY, SLED	

(6) TAPE MECHANISM DECK SECTION-1  
(TCM-230AWR2)



Ref. No.	Part No.	Description	Remark	Ref. No.	Part No.	Description	Remark
401	3-376-464-11	SCREW (+PTT 2.6X6), GROUND POINT		407	3-016-565-01	BASE (PINCH LEVER REV)	
402	3-036-914-01	RIVET		408	3-026-892-01	SPRING (CASSETTE), LEAF	
403	3-016-574-11	SPRING (HEAD), TENSION		* 409	A-2007-731-A	AUDIO BOARD, COMPLETE	
404	X-3374-156-4	PINCH LEVER (REV) ASSY		HP101	A-2056-681-A	DECK (A) ASSY, HEAD (PLAYBACK)	
405	X-3374-155-4	PINCH LEVER (FWD) ASSY		HRPE101A-2056-682-A	DECK (B) ASSY, HEAD (REC/PB/ERASE)		
406	3-016-564-01	BASE (PINCH LEVER FWD)					

(7) TAPE MECHANISM DECK SECTION-2  
(TCM-230AWR2)



Ref. No.	Part No.	Description	Remark	Ref. No.	Part No.	Description	Remark
* 451	X-3374-214-4	CHASSIS ASSY, MAIN		459	A-2004-629-A	MECHANICAL BLOCK ASSY	
452	3-016-570-01	BELT (CAPSTAN)		460	3-016-566-01	SLIDER, REVERSE	
453	3-016-569-01	BELT (TENSION)		* 461	A-2007-732-A	LEAF SW BOARD, COMPLETE	
454	3-017-360-01	BRACKET (MOTOR)		462	3-016-575-11	SPRING, TORSION	
455	X-3376-497-3	FLYWHEEL (FWD) ASSY		463	3-019-208-01	WASHER, STOPPER	
456	X-3374-235-1	FLYWHEEL (REV) ASSY		464	3-030-823-01	SCREW (+BVTT) (2X3.5)	
457	X-3374-238-1	PULLEY ASSY, TENSION		465	3-027-453-01	SPRING (GROUND), TENSION	
458	3-024-405-01	BELT (FR2)		M1	A-2004-628-A	MOTOR ASSY, CAPSTAN	