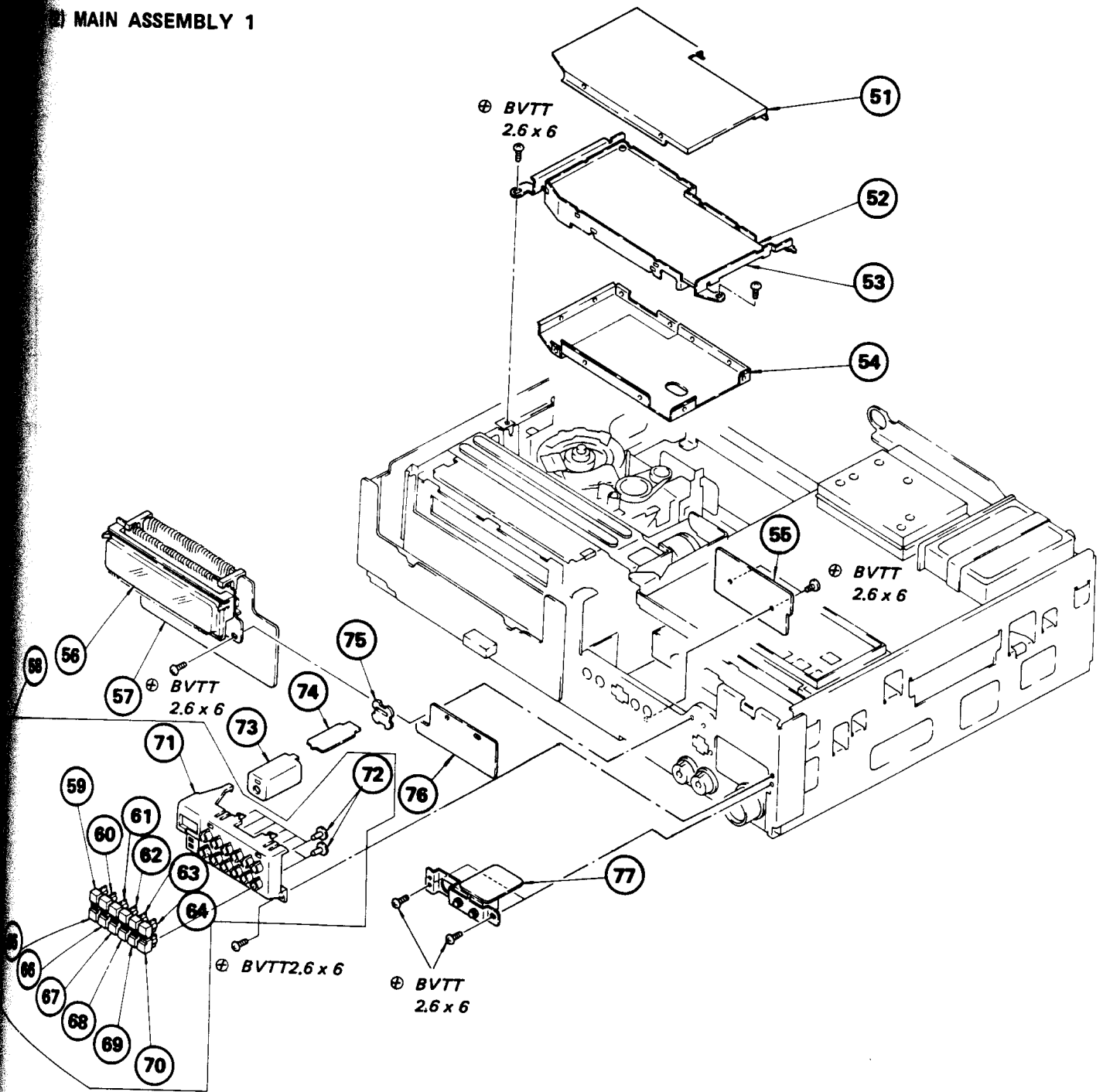
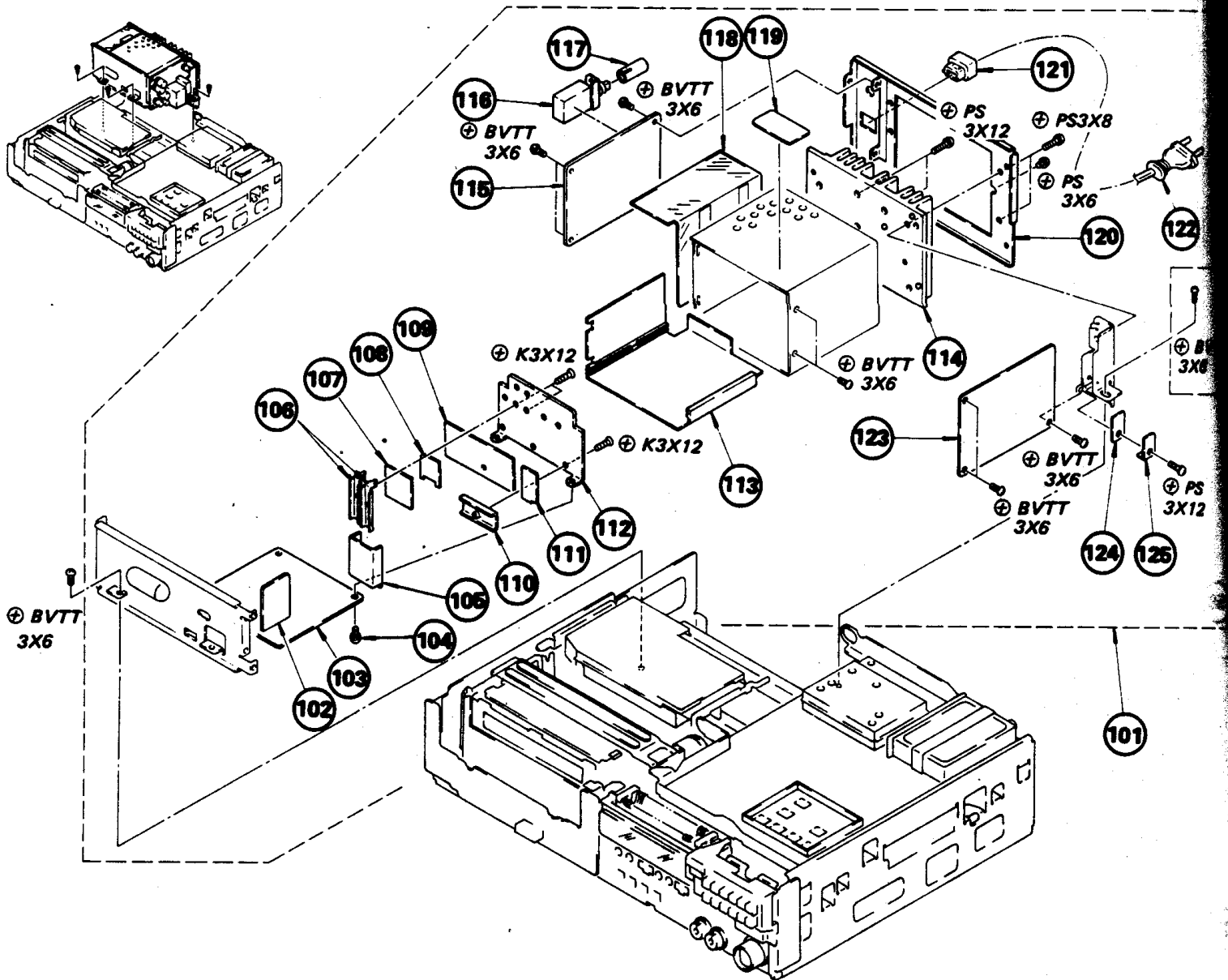


MAIN ASSEMBLY 1



Part No.	Description	Remark	No.	Part No.	Description	Remark
3-675-568-00	LID, UPPER, RP SHIELD CASE		64	3-675-529-00	BUTTON (10, 20), CHANNEL (AEP MODEL)	
A-6711-356-A	RP-7 BOARD, COMPLETE			2-364-724-01	BUTTON (11), CHANNEL (UK MODEL)	
3-675-567-00	CASE (MAIN), SHIELD, RP		65	3-675-531-00	BUTTON (6) (VT), CHANNEL	
X-3670-092-0	LID ASSY, BOTTOM, RP SHIELD CASE		66	2-364-720-01	BUTTON (7), CHANNEL	
1-607-769-00	TM-32 BOARD		67	2-364-721-01	BUTTON (8), CHANNEL	
1-607-767-00	TM-30 BOARD		68	2-364-722-01	BUTTON (9), CHANNEL	
1-607-768-00	TM-31 BOARD		69	2-364-723-01	BUTTON (10), CHANNEL (UK MODEL)	
A-6734-155-A	TUNING BLOCK ASSY (AEP MODEL)	59,60,61,62,63,64,65	70	3-675-532-00	BUTTON (0), CHANNEL (AEP MODEL)	
		66,67,68,69,70,71,72		2-364-725-01	BUTTON (12), CHANNEL (UK MODEL)	
A-6734-161-A	TUNING BLOCK ASSY (UK MODEL)	59,60,61,62,63,64,65		3-675-529-11	BUTTON (10, 20), CHANNEL (AEP MODEL)	
		66,67,68,69,70,71,72	71	3-675-542-00	HOLDER, CHANNEL BUTTON	
2-364-706-01	BUTTON (1), CHANNEL		72	3-669-528-00	CAP, BUTTON	
2-364-715-01	BUTTON (2), CHANNEL		73	4-342-117-00	CASE, SHIELD (MAIN), R	
2-364-716-01	BUTTON (3), CHANNEL		74	1-606-794-00	N BOARD	
2-364-717-01	BUTTON (4), CHANNEL		75	4-342-118-00	LID, SHIELD CASE, R	
2-364-718-01	BUTTON (5), CHANNEL		76	1-607-766-00	CH-10 BOARD (AEP MODEL)	
				1-607-776-00	CH-27 BOARD (UK MODEL)	
			77	1-607-774-00	HM-1 BOARD	

### (3) POWER SUPPLY (SR-11E/SR-11UB) ASSEMBLY

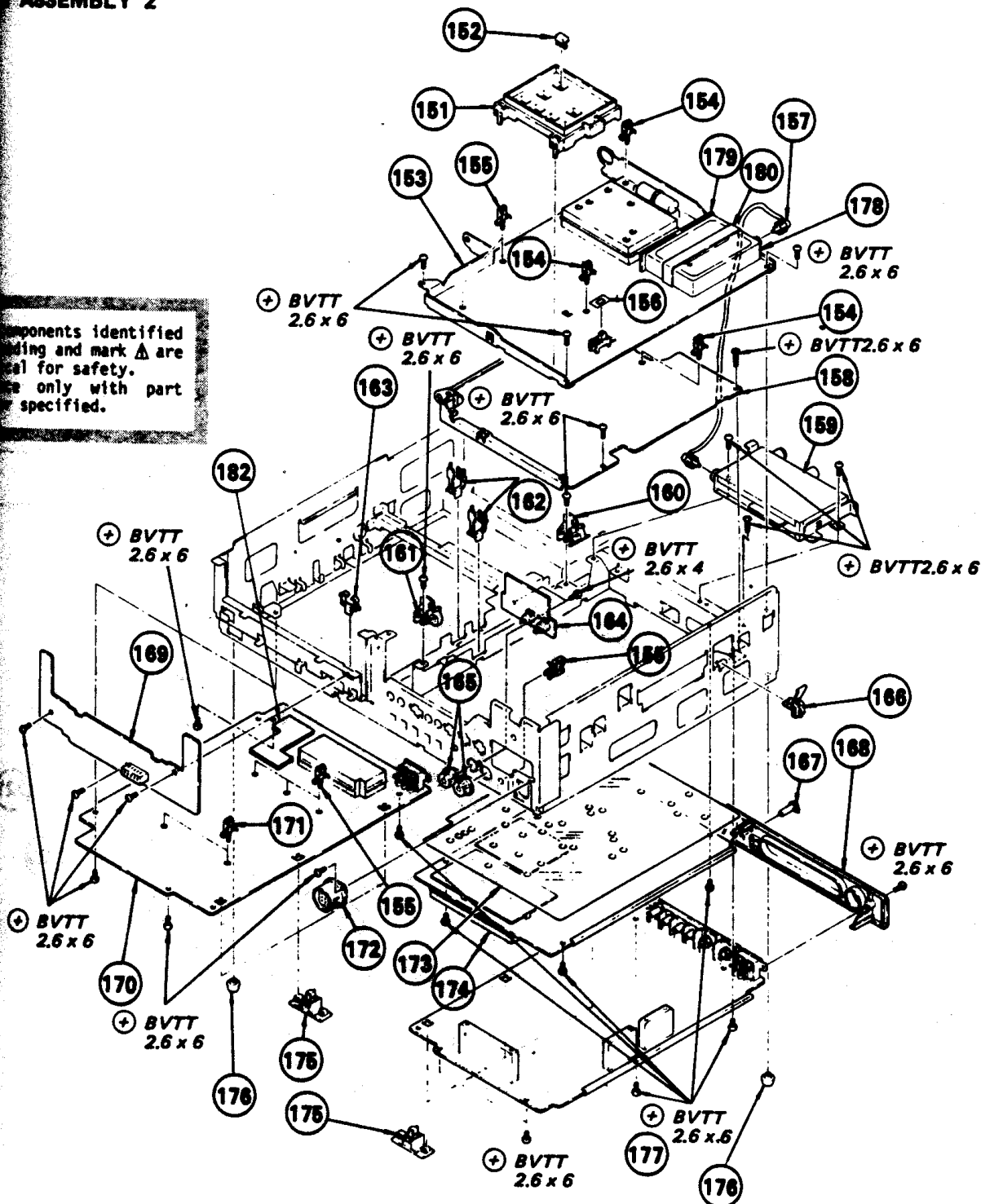


No.	Part No.	Description	Remark	No.	Part No.	Description	Remark
101	▲ 1-413-105-11	POWER BLOCK (SR11E) (AEP MODEL)	102-125	114	2-430-942-01	HEAT SINK	
	▲ 1-413-105-21	REGULATOR SWITCHING (UK MODEL)	102-125	115	▲ 1-607-792-11	F BOARD	
102	▲ 1-607-790-11	C BOARD		116	▲ 1-553-834-11	PUSH SWITCH	
103	▲ 1-607-789-11	M BOARD		117	4-334-115-01	KNOB, CLOCK-D	
104	2-430-772-01	SCREW, +PSW 3X8		118	2-430-268-01	COVER, F BOARD	
105	2-430-267-01	COVER, INSULATING		119	2-439-042-01	LABEL, MODEL NUMBER (AEP MODEL)	
106	▲ 2-430-799-01	RETAINER, TRANSISTOR			2-439-043-01	LABEL, MODEL NUMBER (UK MODEL)	
107	2-430-209-01	SHEET, RUBBER		120	▲ 2-403-497-01	PANEL	
108	2-430-944-01	PLATE, COPPER		121	▲ 3-703-244-02	STOPPER, CORD	
109	2-430-271-01	SHEET, RUBBER		122	▲ 1-534-817-12	CORD, POWER (AEP MODEL)	
110	▲ 2-430-746-01	RETAINER, DIODE			▲ 1-534-777-31	CORD, POWER (UK MODEL)	
111	2-430-270-01	SHEET, RUBBER		123	▲ 1-607-791-11	D BOARD	
112	2-430-943-01	HEAT SINK		124	2-430-269-01	SHEET, RUBBER	
113	▲ 2-430-266-01	HOLDER, PCB		125	▲ 2-430-945-01	RETAINER, IC	

The components identified by shading and mark ▲ are critical for safety. Replace only with part number specified.

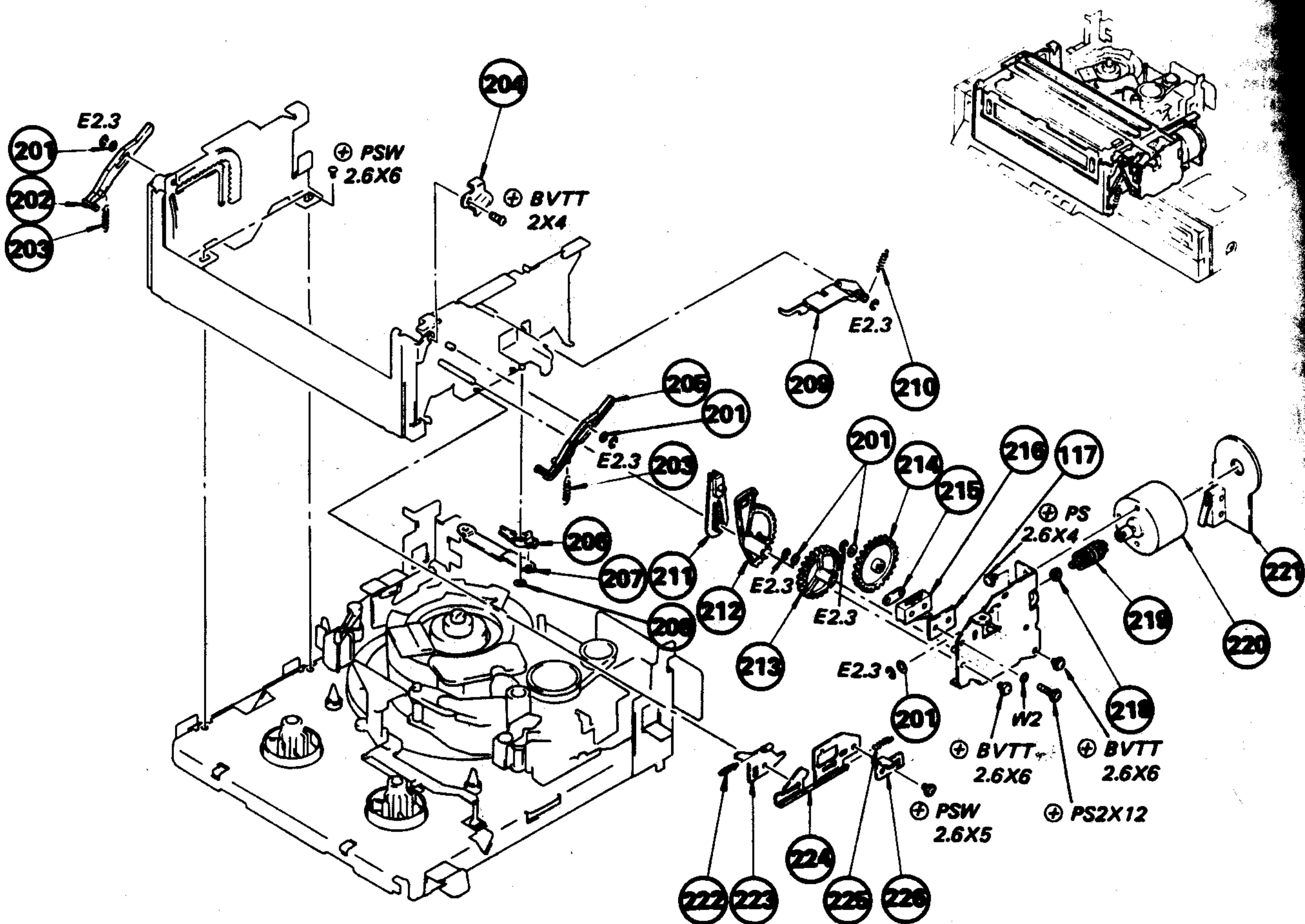
# ASSEMBLY 2

Components identified by a triangle and mark Δ are critical for safety. Use only with part specified.

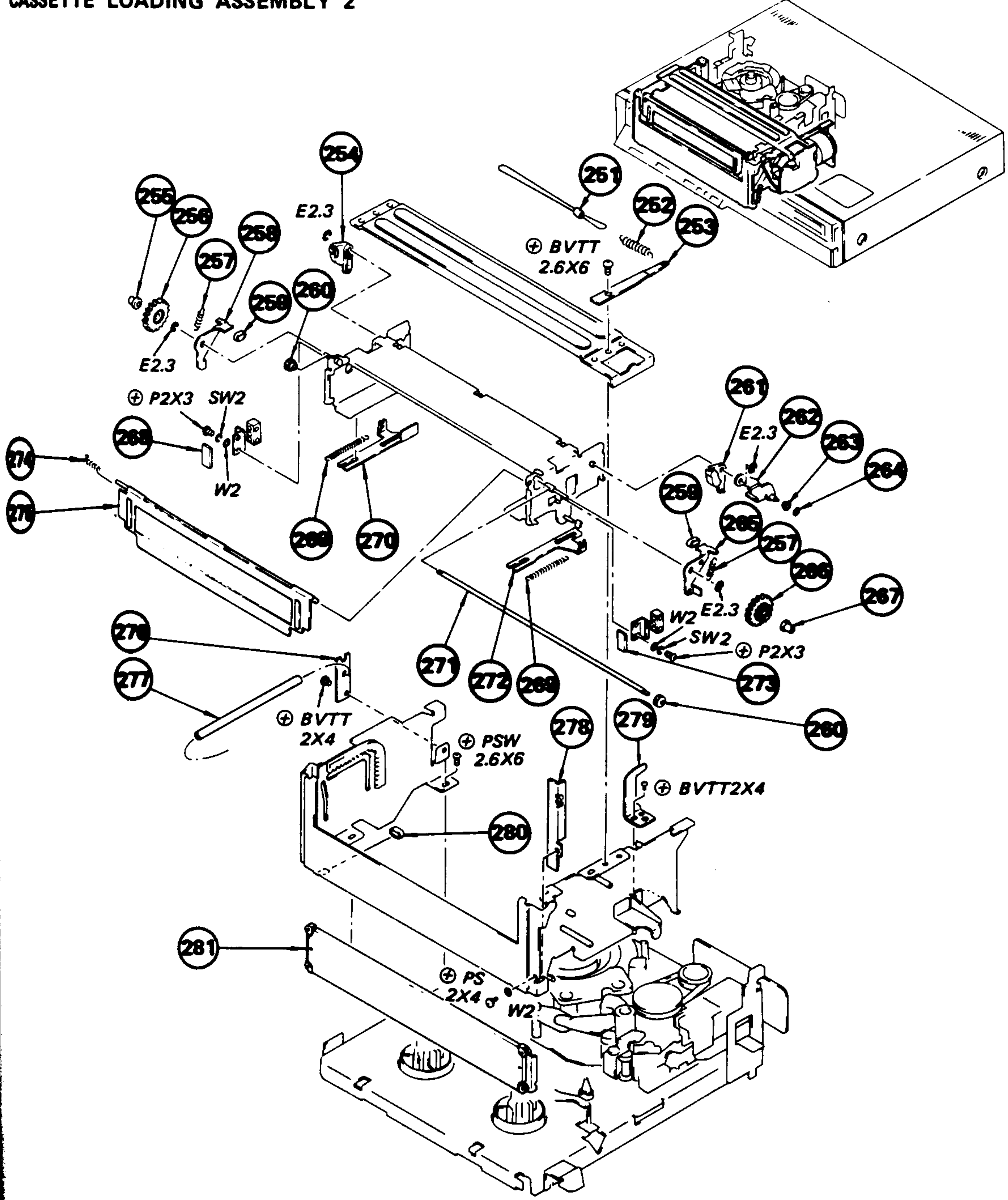


No.	Description	Remark	No.	Part No.	Description	Remark
154-153-A	PANEL ASSY, PRESET (AEP MODEL)	152	165	3-675-520-00	BUTTON, TRACK CONTROL	
154-157-A	PANEL ASSY, PRESET (UK MODEL)	152	166	Δ:4-308-891-00	SUPPORTER, CHASSIS	
154-243-00	BUTTON, PRESET		167	3-670-149-00	KNOB, V SYNCHRONOUS	
154-125-A	TU-24 BOARD, COMPLETE (AEP MODEL)		168	3-675-537-00	PANEL, CONNECTOR	
154-139-A	TU-24 BOARD, COMPLETE (UK MODEL)		169	Δ:A-6717-276-A	FU-5 BOARD, COMPLETE	
154-407-00	CLIP, AC WIRE E		170	Δ:A-6715-153-A	SS-11 BOARD, COMPLETE	
154-214-00	CLIP, CABLE		171	Δ:4-309-753-01	CLIP, CABLE	
154-259-00	CLOTH, MASKING		172	Δ:1-933-483-00	HARNESS (CA-5)	
154-716-61	CABLE, PIN		173	Δ:3-675-570-00	SHEET, INSULATING	
154-154-A	JR-1 BOARD, COMPLETE (AEP MODEL)		174	Δ:A-6713-135-A	AM-1 BOARD, COMPLETE	
154-166-A	JR-1 BOARD, COMPLETE (UK MODEL)		175	Δ:3-671-187-00	CLIP, ANCHOR	
154-385-00	HINGE (B), JR		176	3-670-155-00	LEG	
154-385-00	HINGE (A), JR		177	Δ:A-6711-355-A	RV-7 BOARD, COMPLETE	
154-822-00	HOLDER, WIRE		179	Δ:1-607-775-00	MT-1 BOARD	
154-385-00	HOLDER, WIRE		180	Δ:3-662-383-00	BAND, RETAINER, TUNER	
154-776-00	SN-11 BOARD		182	Δ:1-609-854-00	FH-2 BOARD	

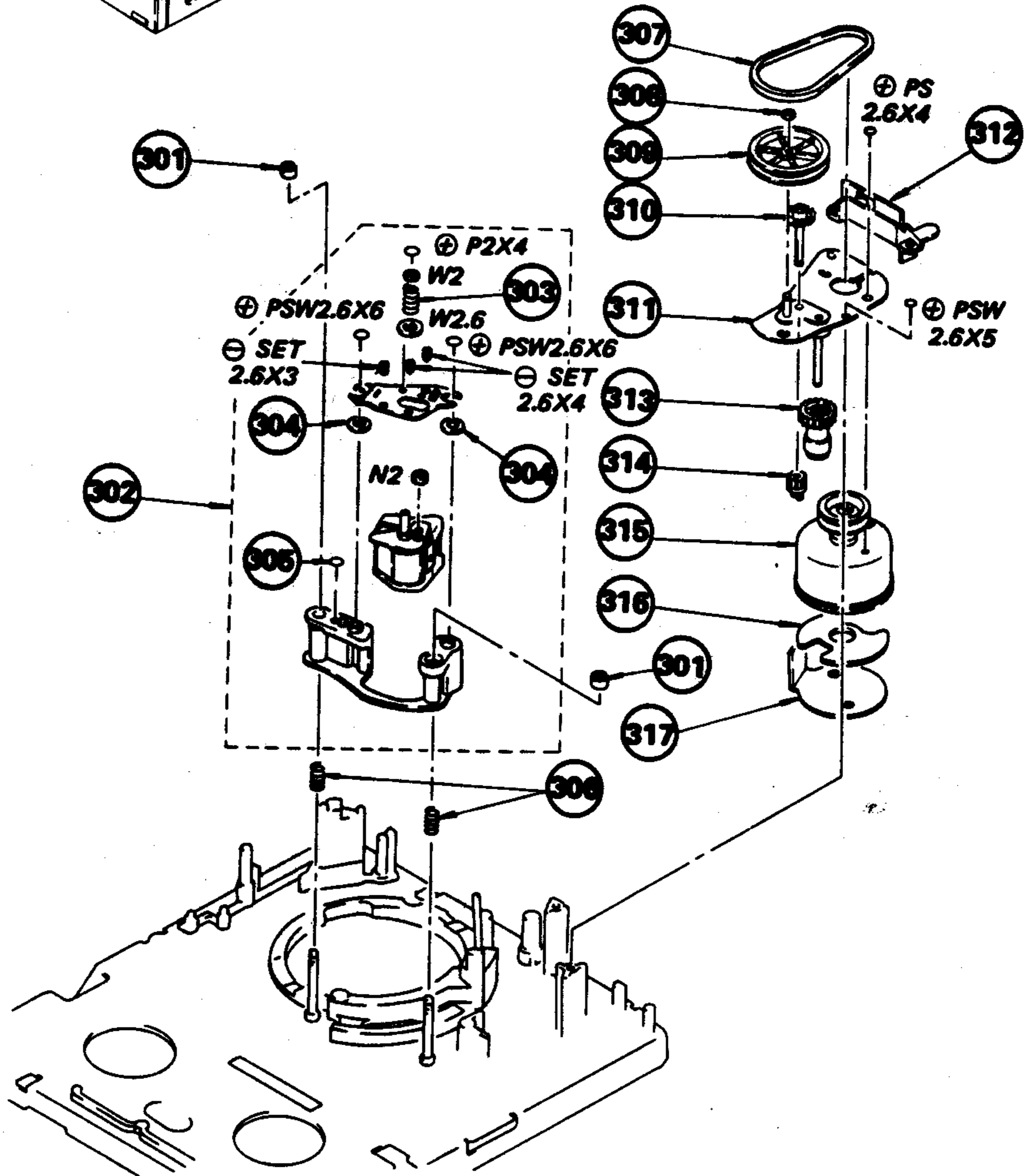
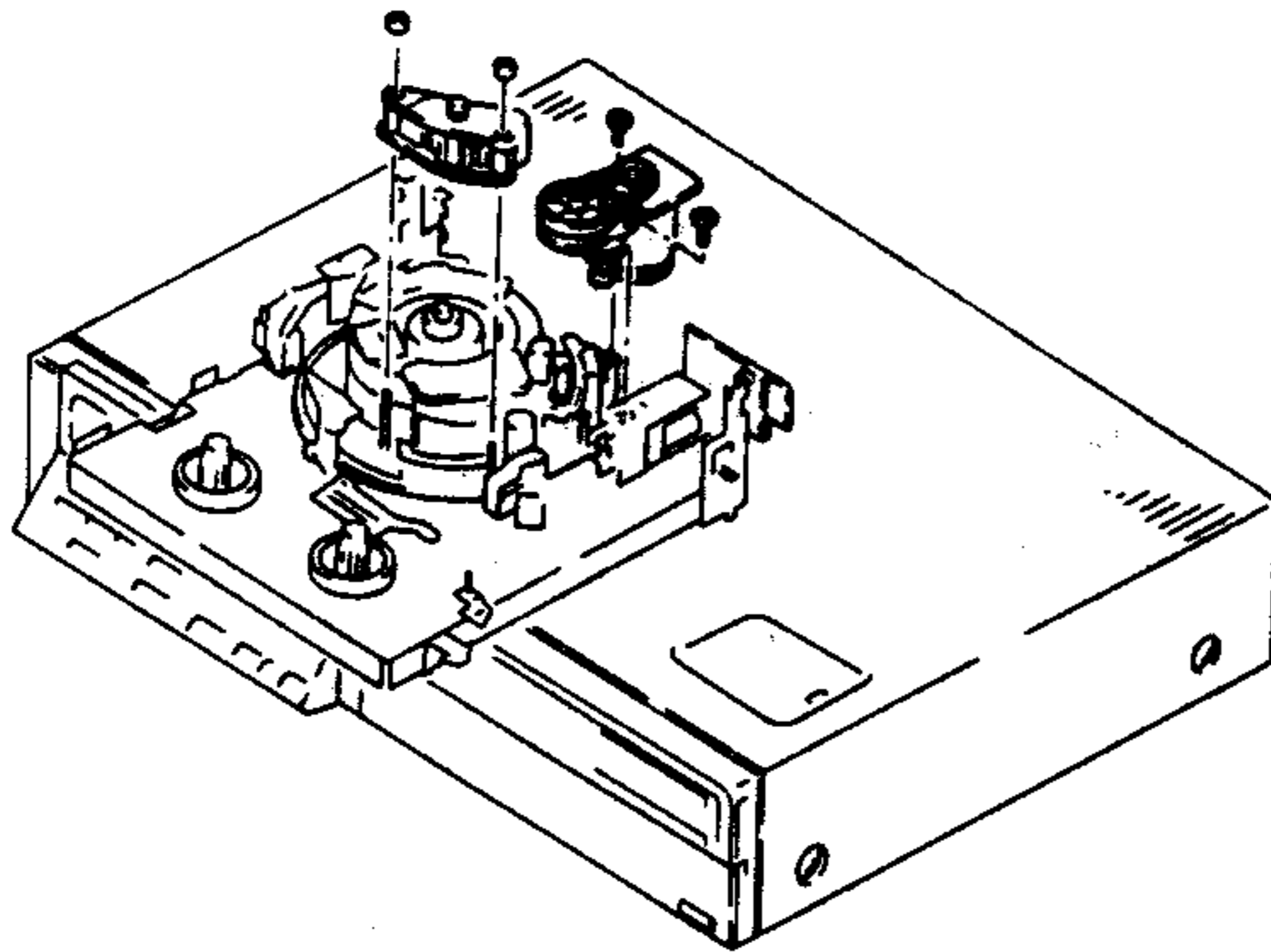
(5) CASSETTE LOADING ASSEMBLY 1

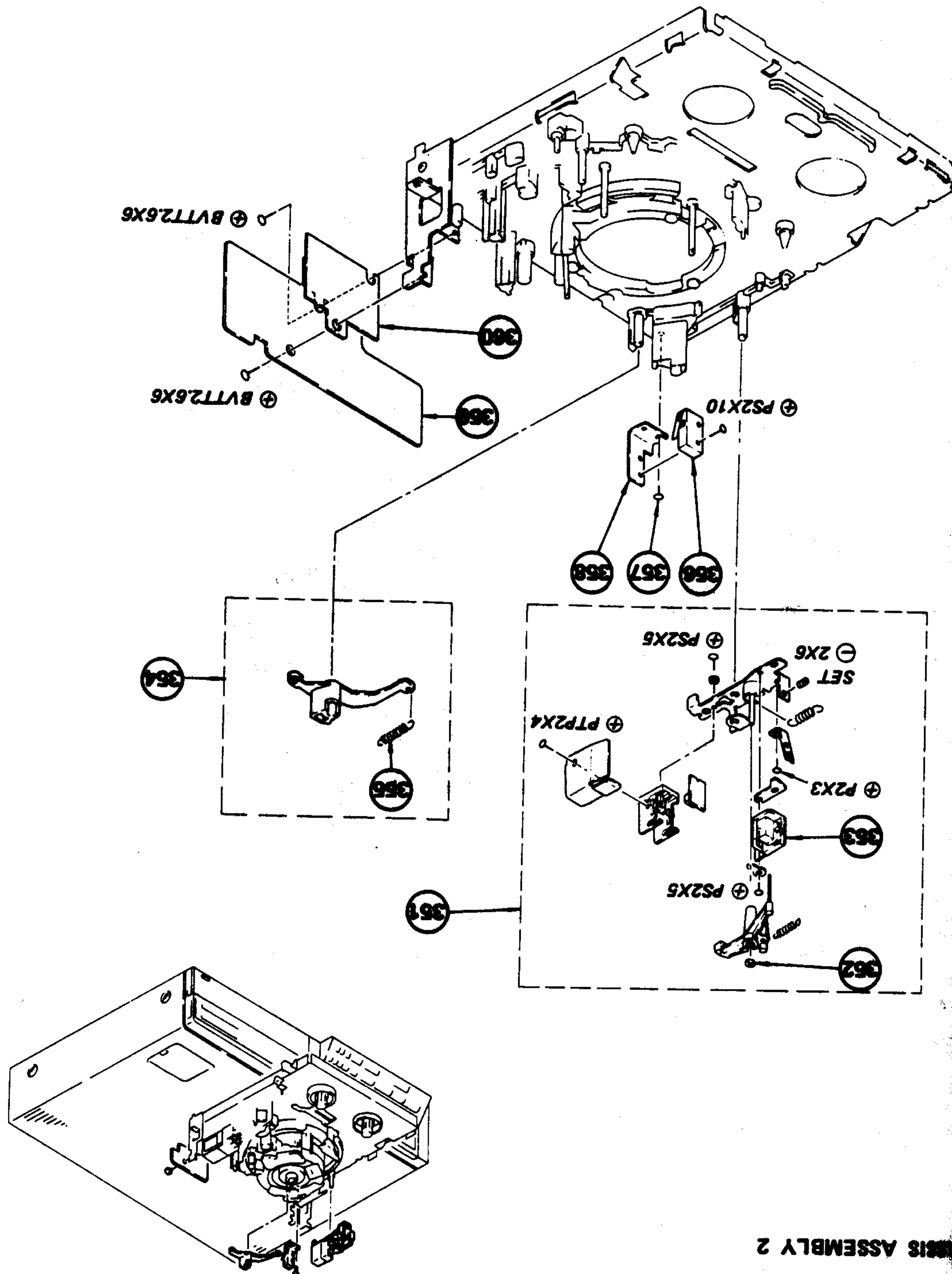


CASSETTE LOADING ASSEMBLY 2

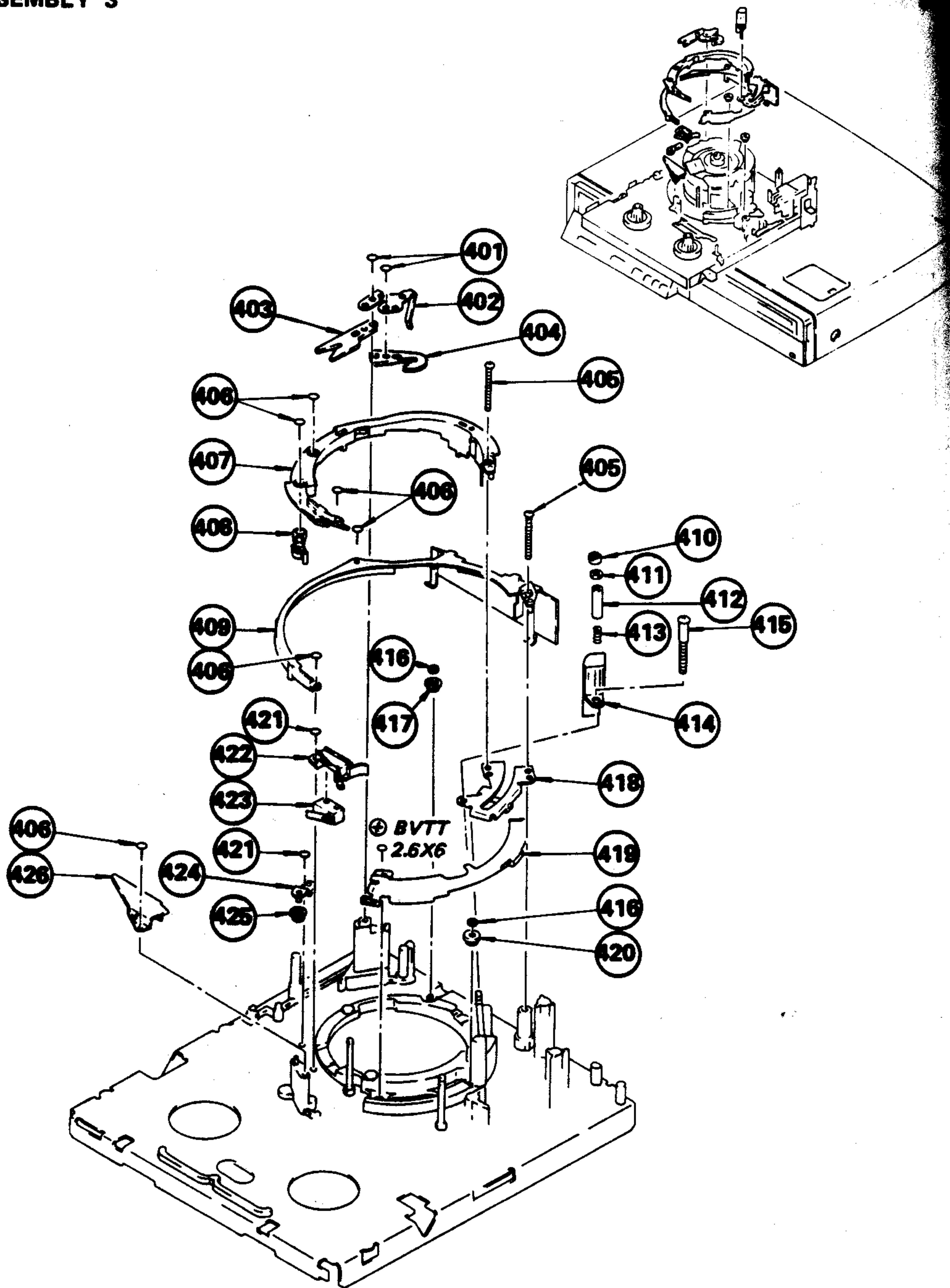


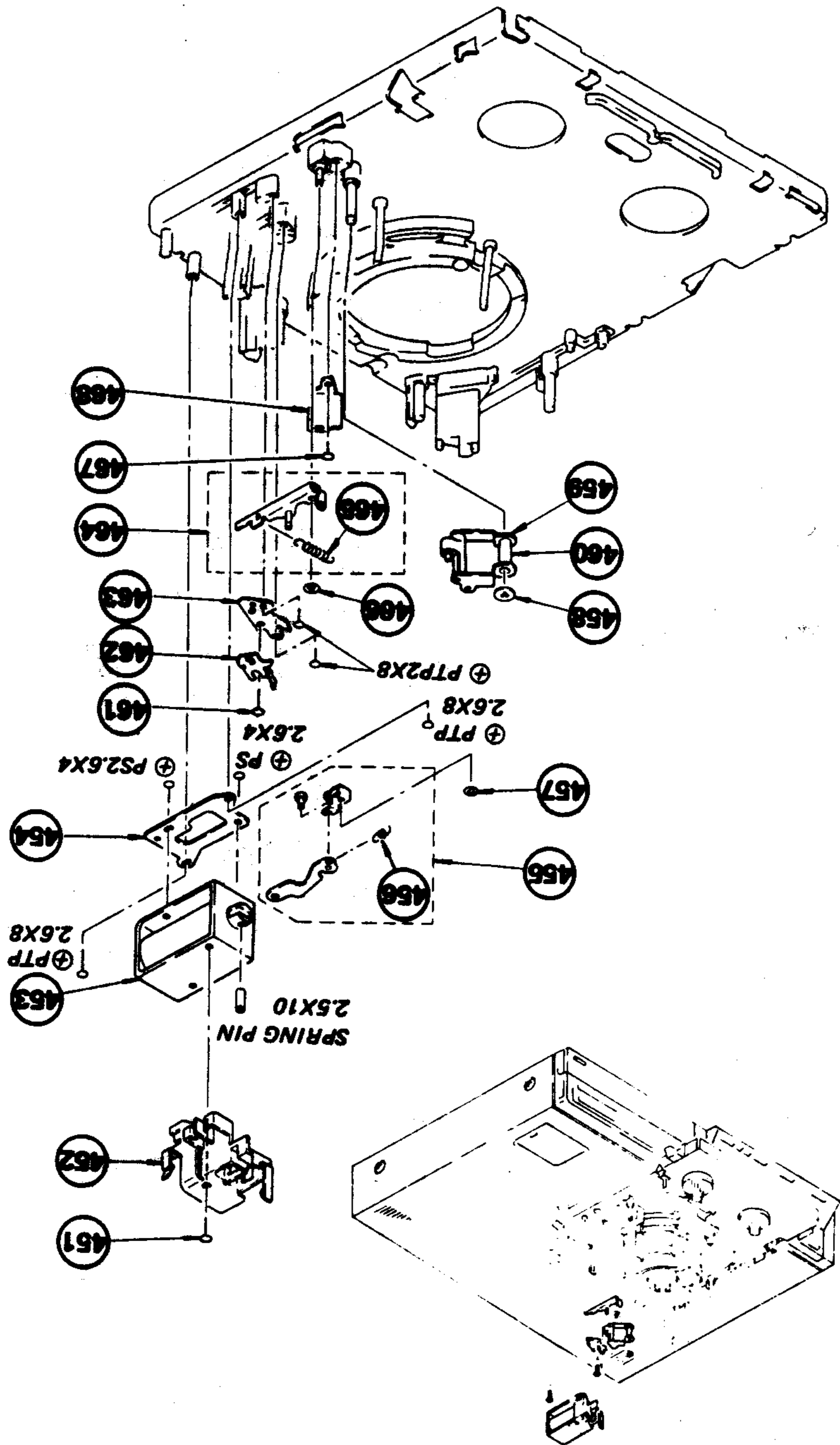
**(7) CHASSIS ASSEMBLY 1**



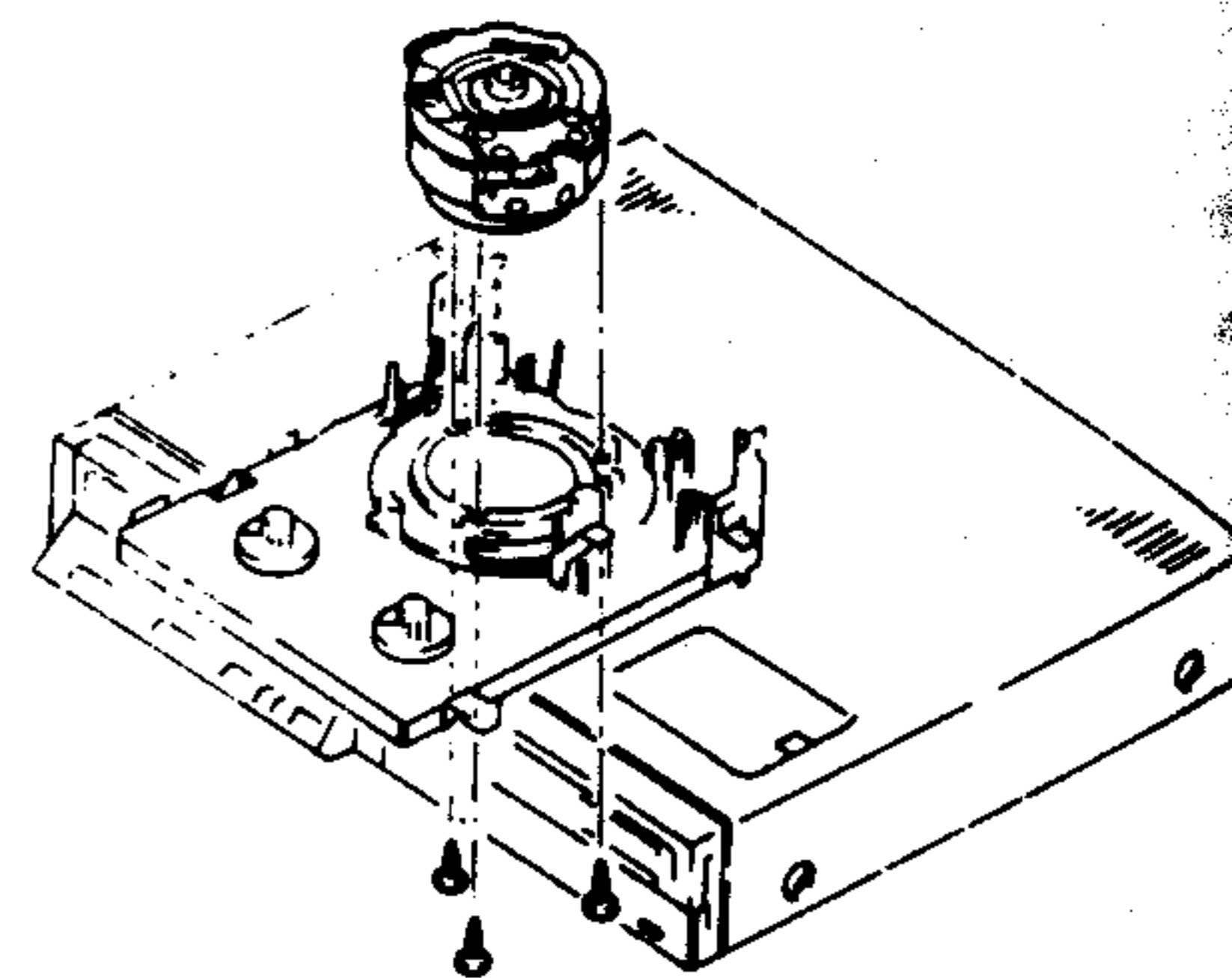
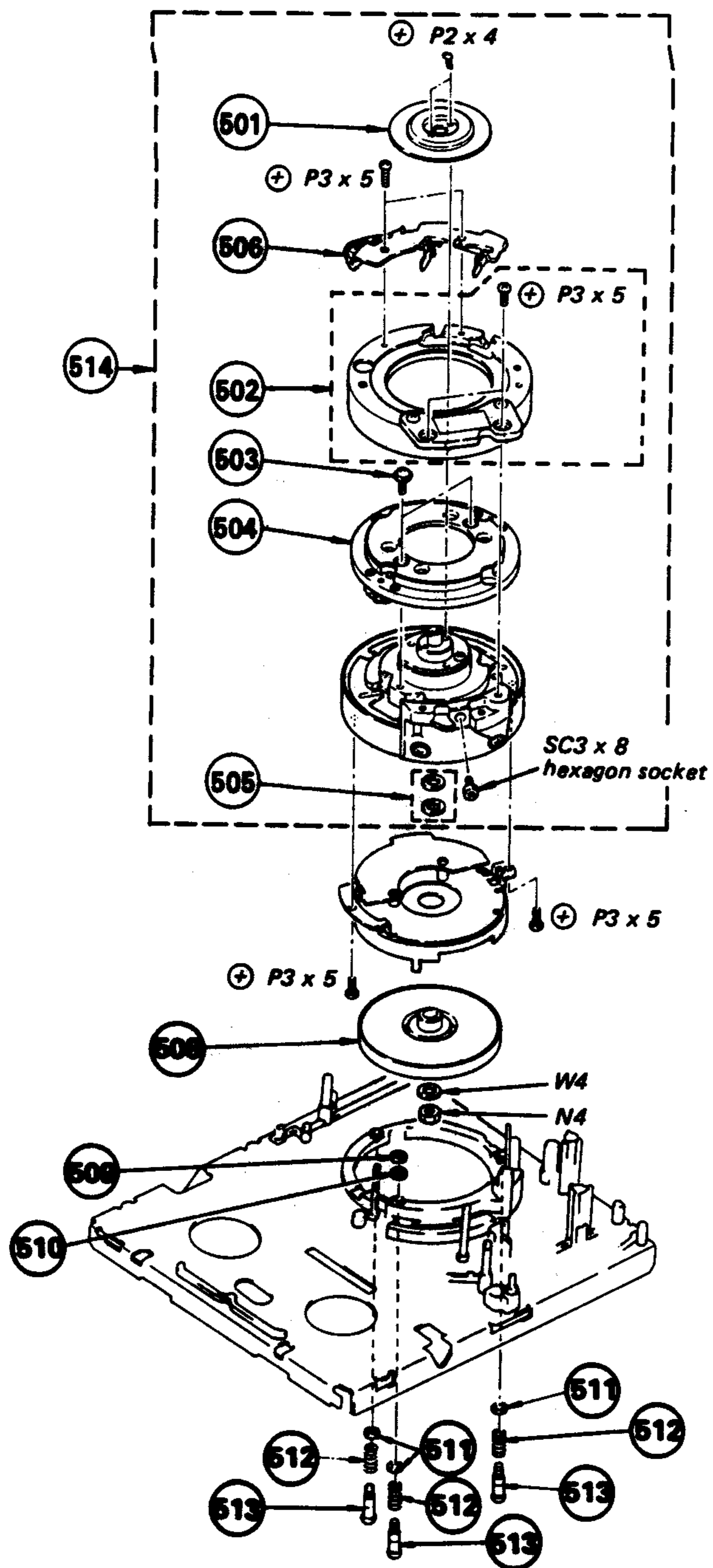


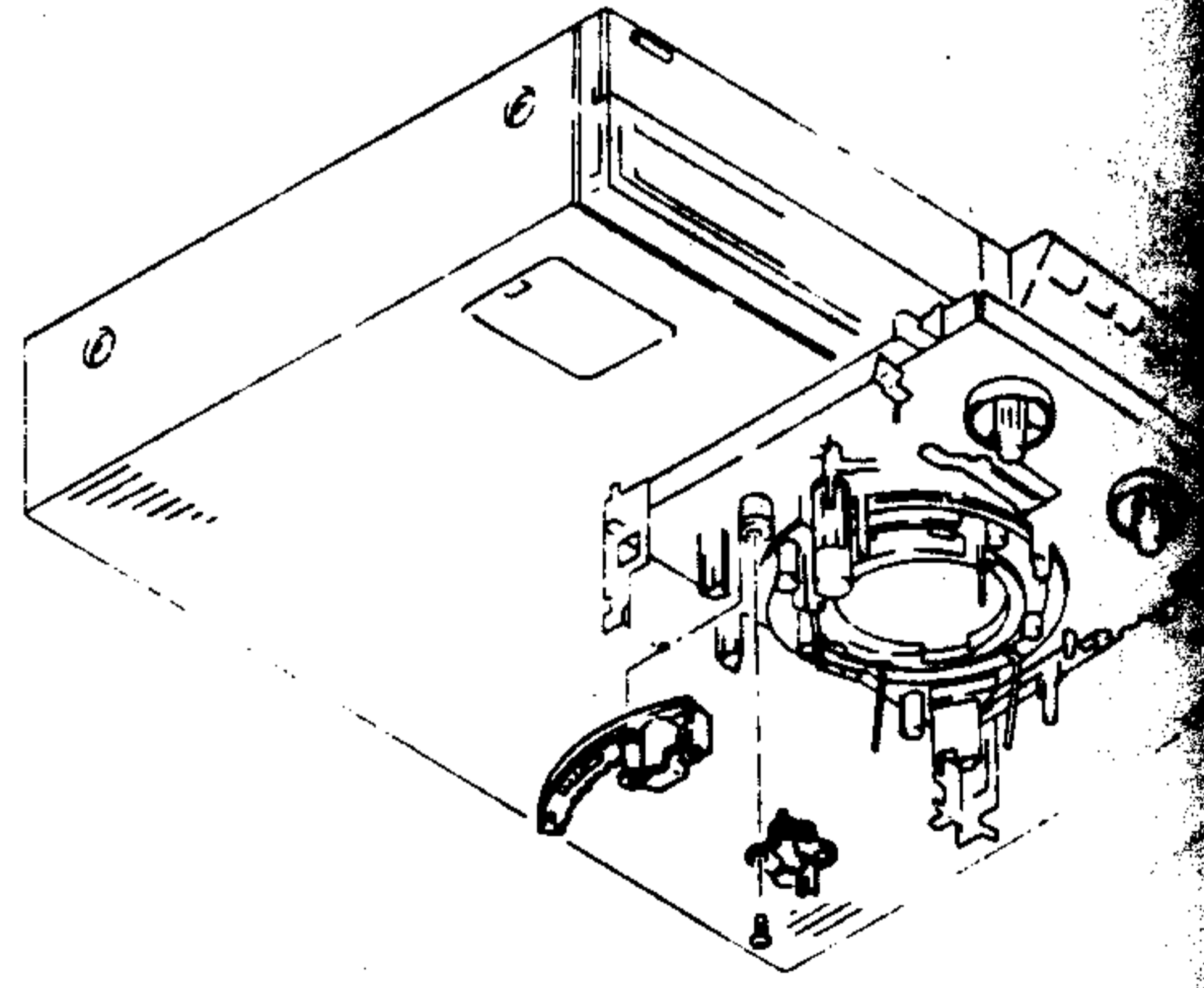
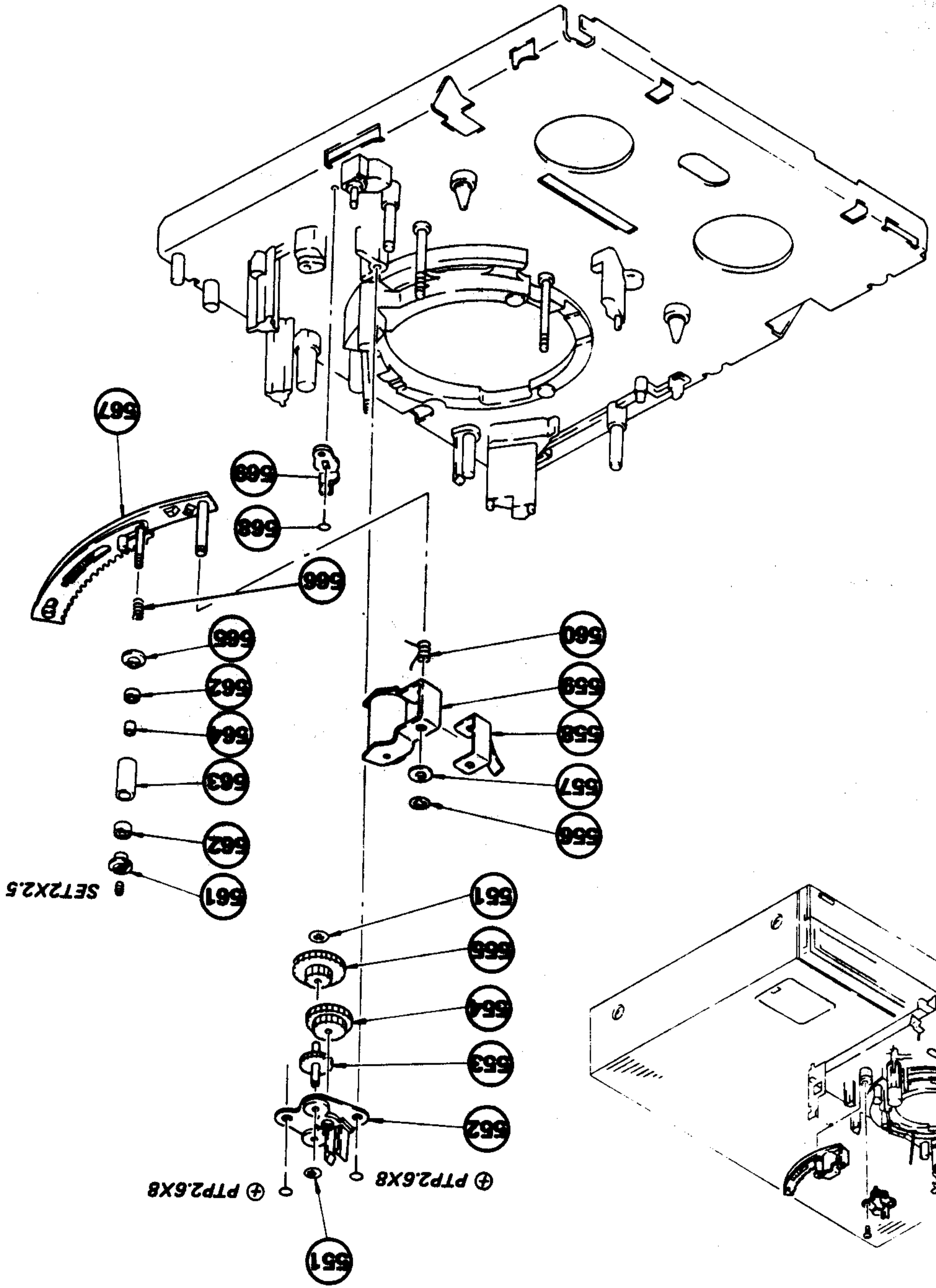
**(9) CHASSIS ASSEMBLY 3**





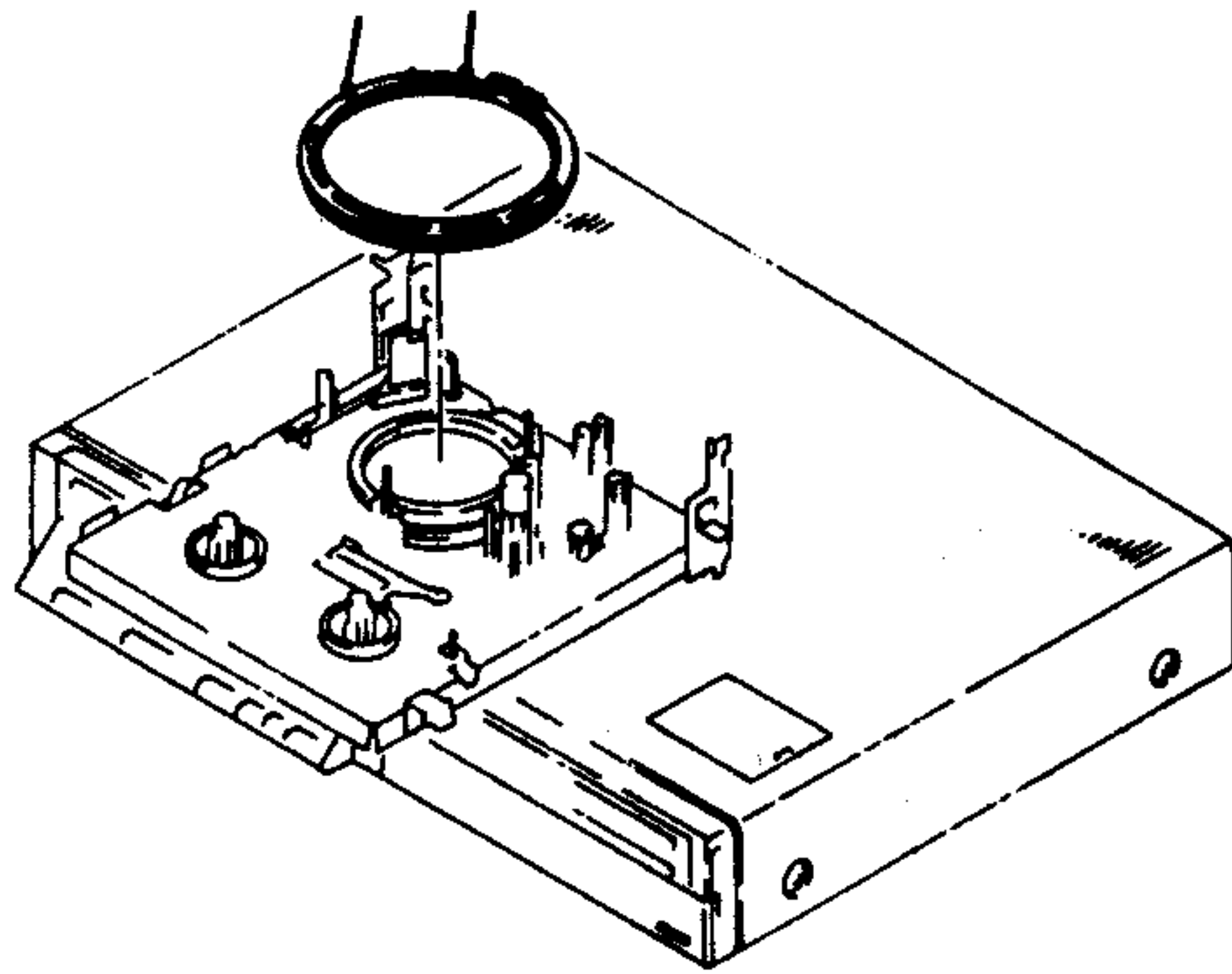
# (11) DRUM ASSEMBLY





CHASSIS ASSEMBLY 5

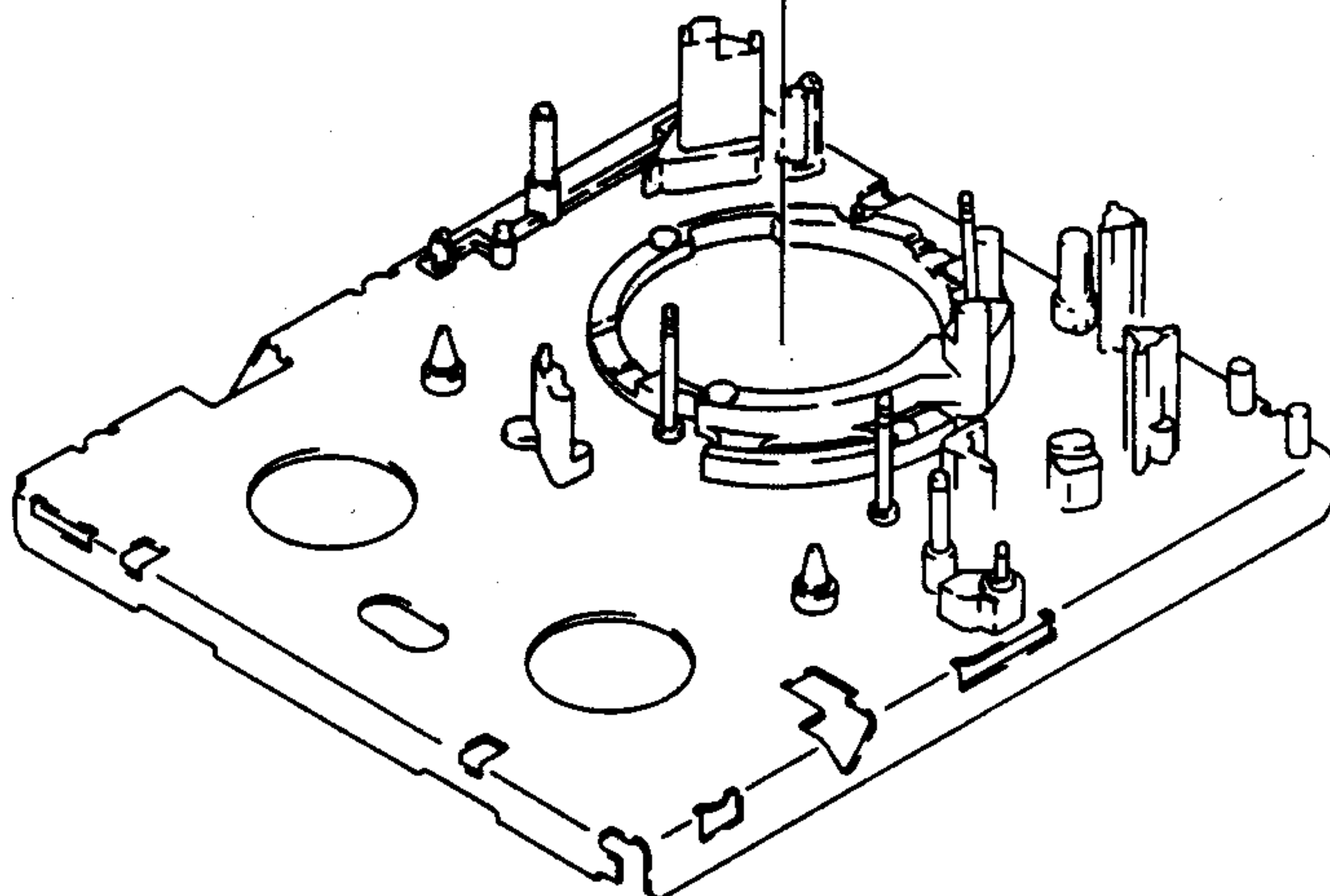
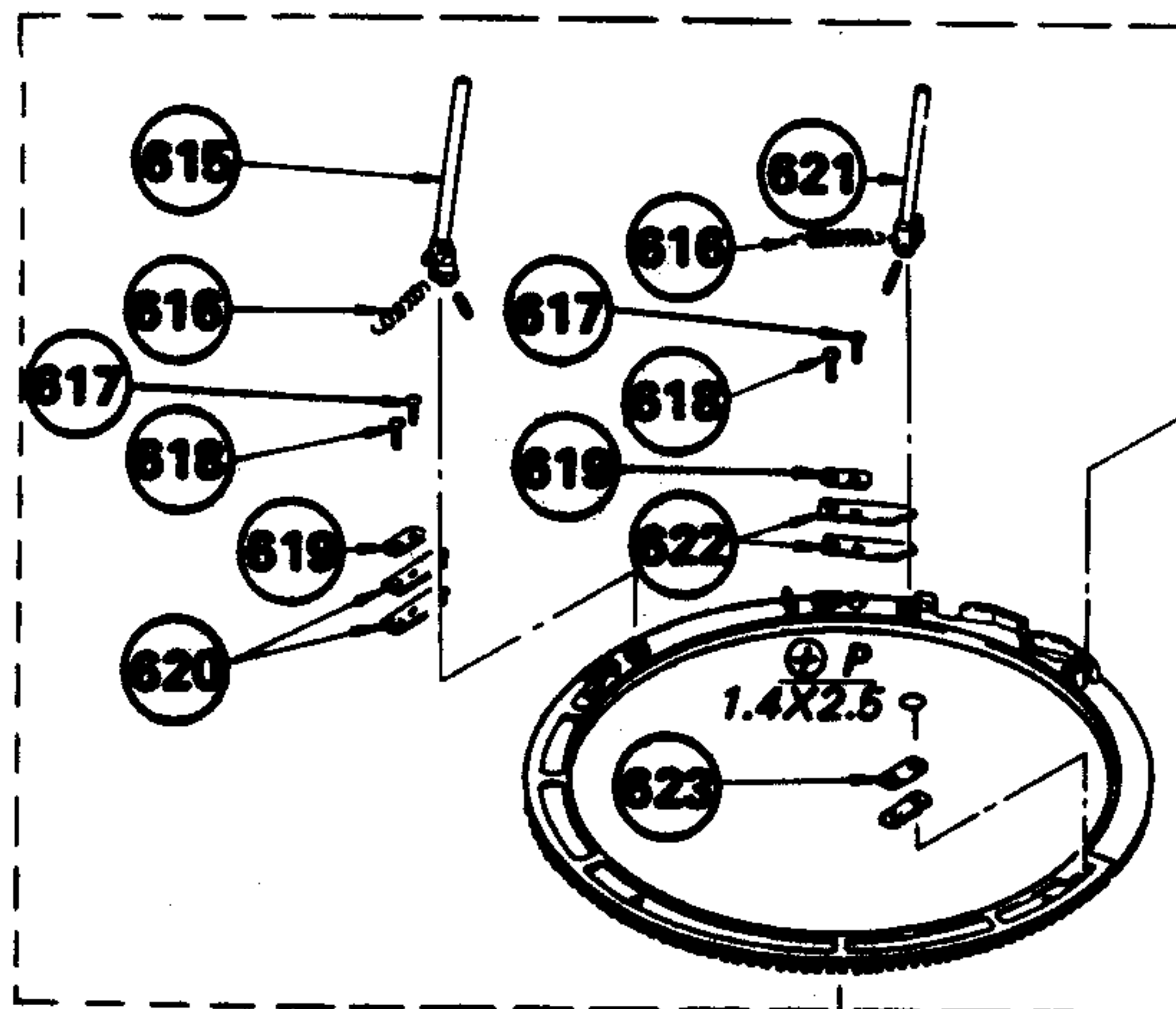
**(13) CHASSIS ASSEMBLY 6**

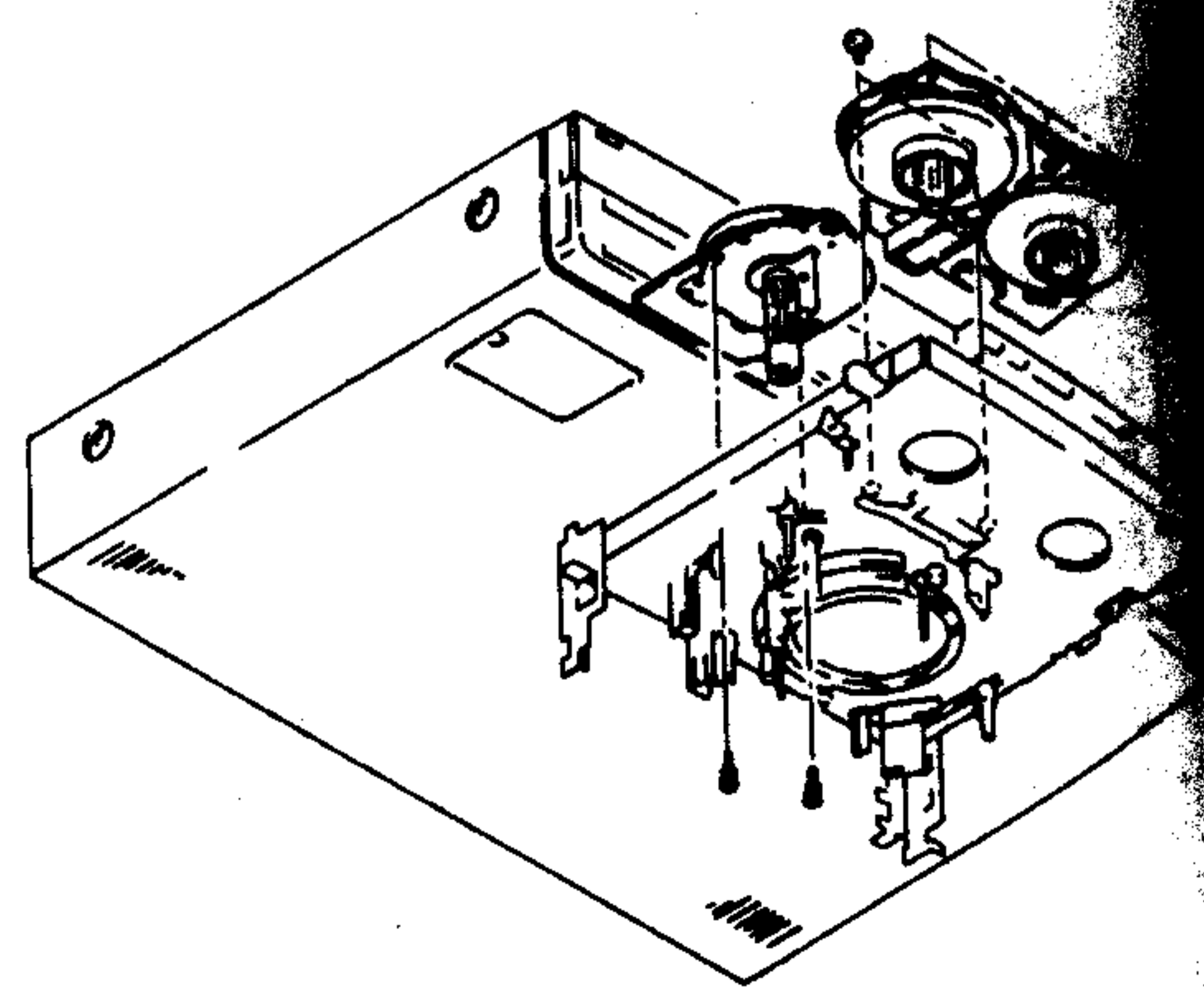
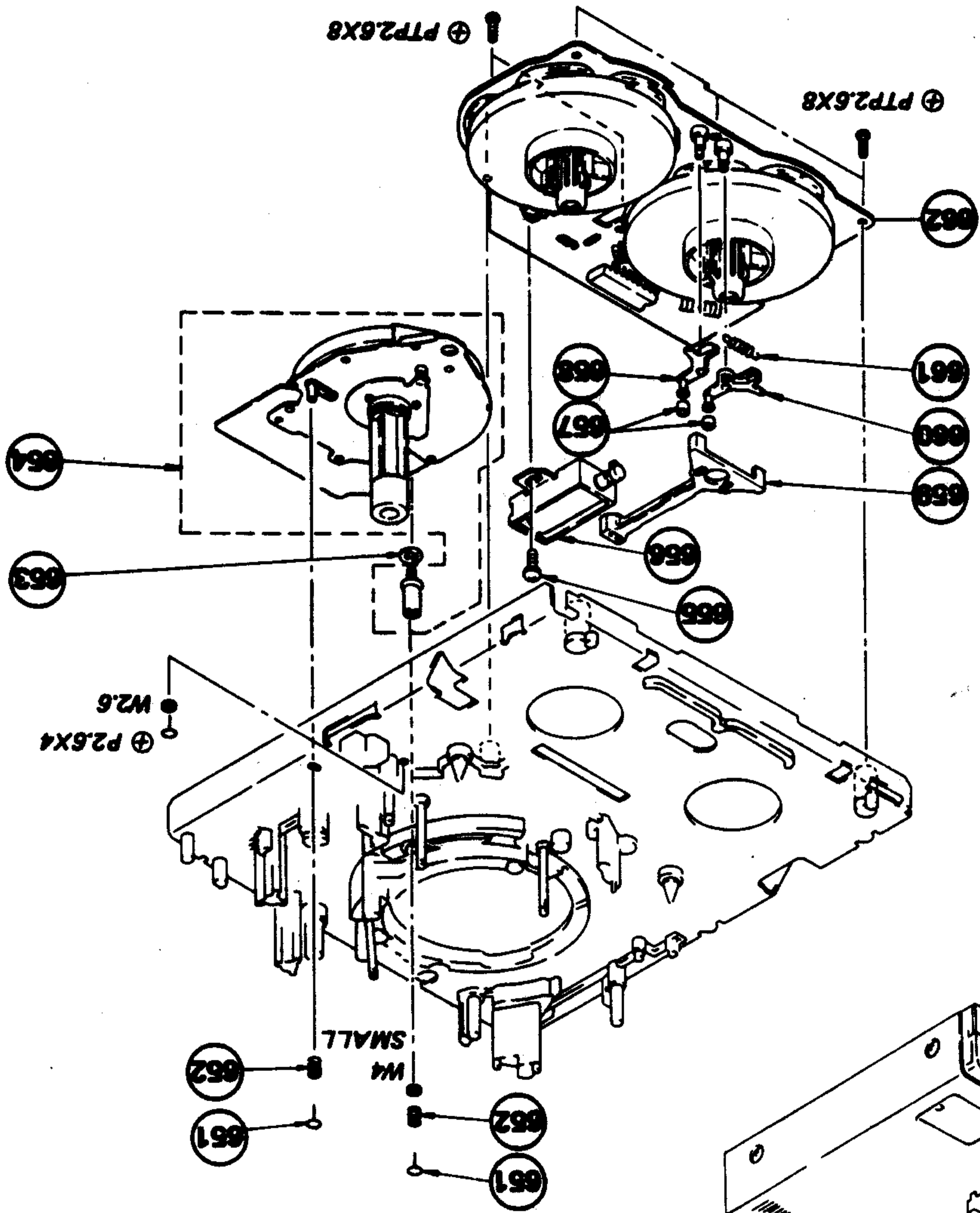


- 601 SET2X2.5
- 602
- 603
- 604
- 602
- 605
- 606

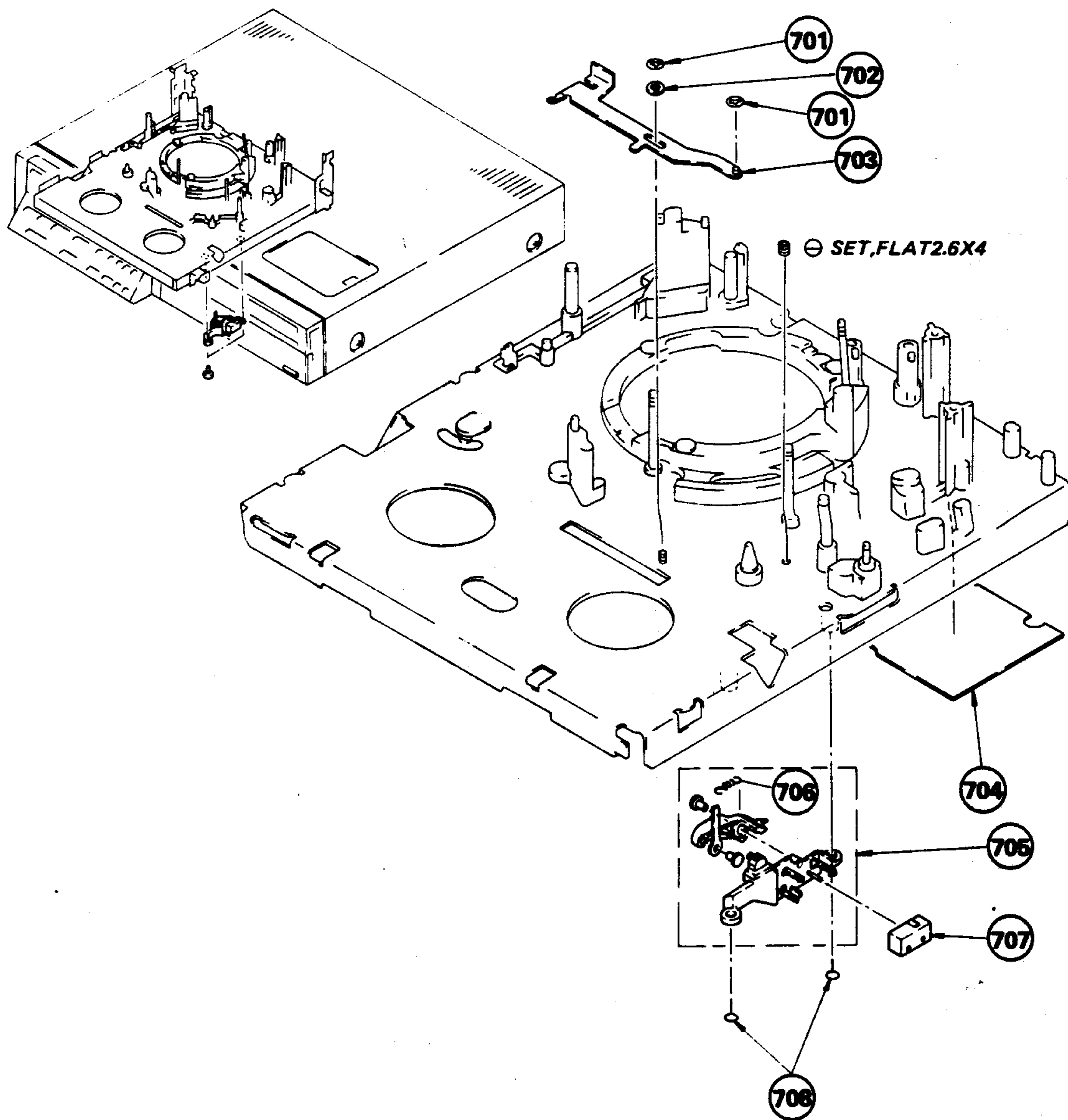
SET1.7X4

- 607
- 608
- 609
- 610
- 611
- 612
- 613
- ⊕ P1.7X5

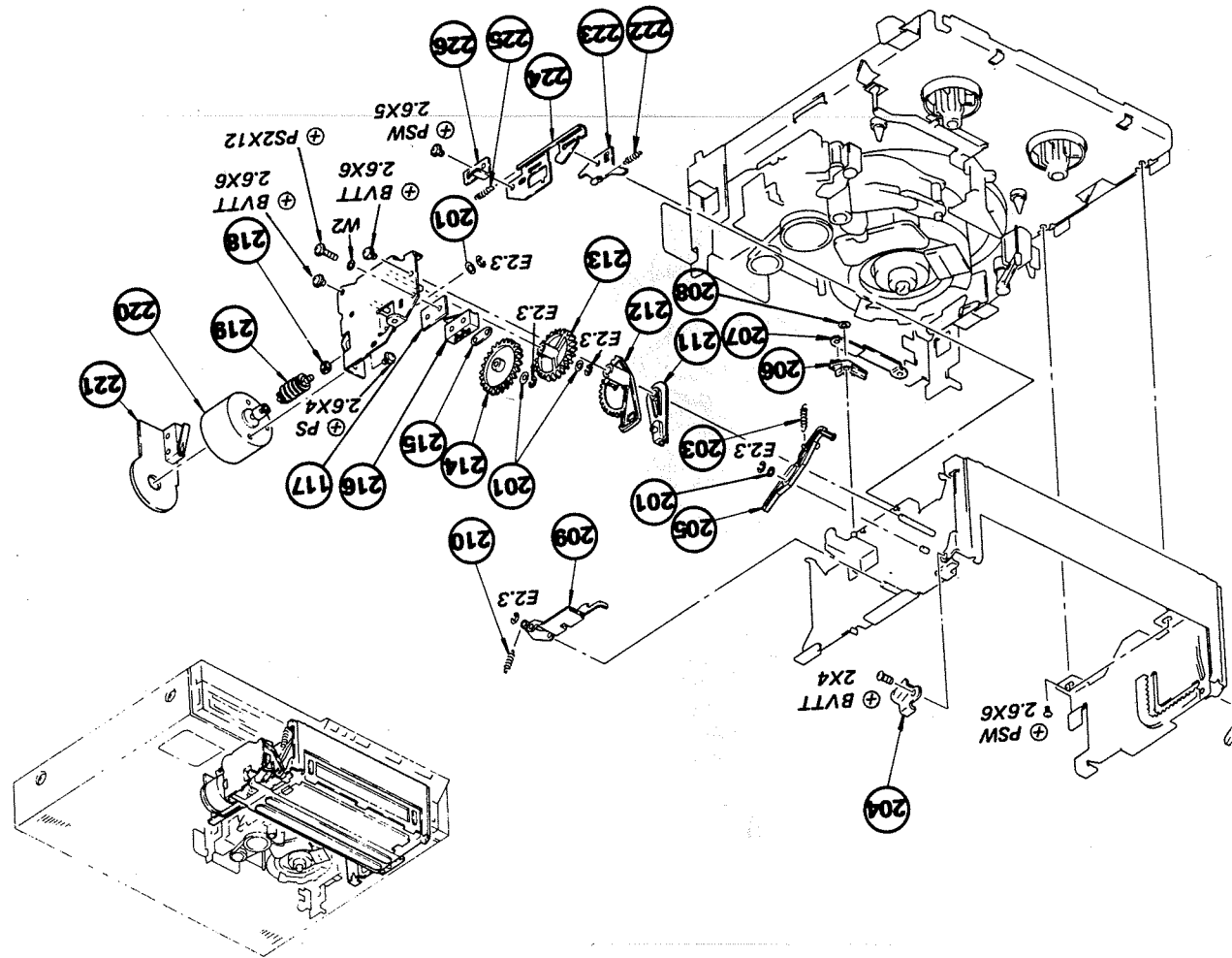




**(15) CHASSIS ASSEMBLY 8**



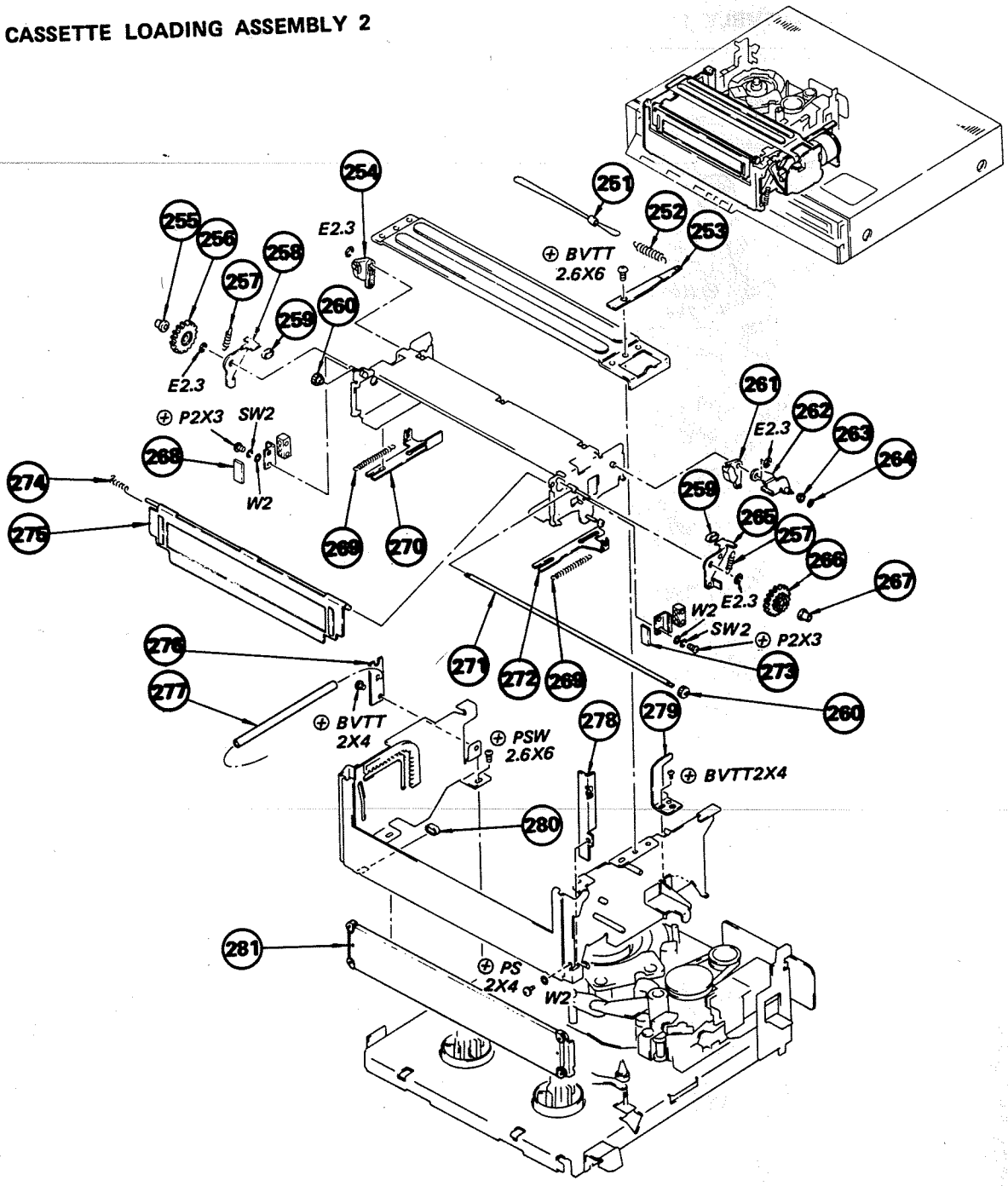
SETTE LOADING ASSEMBLY 1



No.	Part No.	Description
214	3-670-015-00	WHEEL, WORM
215	3-646-476-00	NUT, PLATE
216	1-552-664-00	SWITCH, MICRO S1 (CASSETTE UP)
217	3-534-263-00	INSULATOR
218	3-670-168-00	BEARING, WORM
219	X-3670-001-0	WORM ASSY
220	X-3670-002-0	MOTOR ASSY, FL
221	A-6728-246-A	LM-9 BOARD, COMPLETE
222	3-530-248-XX	SPRING, TENSION
223	3-670-010-00	STOPPER, LOCK
224	3-670-009-00	PLATE, LOCK
225	3-630-615-XX	SPRING, TENSION
226	3-670-011-00	PLATE, ADJUSTMENT, CD

Part No.	Description
3-701-439-21	WASHER
3-670-056-00	ARM (L), DOOR
3-500-130-00	SPRING, TENSION
3-671-819-00	COVER, SECTOR GEAR
3-670-057-00	ARM (R), DOOR
3-670-001-00	LEVER, UNLOCK
3-670-034-00	JOINT, UNLOCK
3-669-465-00	WASHER (1.5), STOPPER
3-670-152-00	ARM, LOCK, UP
3-536-767-XX	ARM, HOLDER DRIVING
3-670-136-00	GEAR, SECTOR
3-670-016-00	GEAR (A)

(6) CASSETTE LOADING ASSEMBLY 2



No.	Part No.	Description
251	3-671-863-00	STRING, PULL, WIRE
252	3-535-021-00	SPRING, TENSION
253	3-671-864-00	PLATE, SPRING HOOK
254	3-670-003-00	CAM (L), C-IN
255	3-670-018-00	ROLLER, GUIDE
256	3-670-006-00	GEAR (E)
257	3-670-169-00	SPRING, TENSION
258	▲:3-670-031-00	RETAINER (L), CASSETTE
259	▲:3-646-334-00	CUSHION
260	3-670-007-00	GEAR (C)
261	3-670-004-00	CAM (R), C-IN
262	▲:X-3670-005-0	ARM ASSY, OPEN LID
263	3-670-054-00	ROLLER, OPEN LID
264	3-669-465-00	WASHER (1.5), STOPPER
265	▲:3-670-041-00	RETAINER (R), CASSETTE
266	3-670-005-00	GEAR (B)

Remark	No.	Part No.	Description
	267	3-671-892-00	ROLLER (M), GUIDE
	268	▲:1-605-111-14	CI-2 BOARD
	269	3-489-310-XX	SPRING, TENSION
	270	▲:3-670-036-00	PLATE (L), SLIDE, C
	271	▲:3-670-053-00	SHAFT, JOINT
	272	▲:3-670-037-00	PLATE (R), SLIDE, C
	273	▲:1-605-112-14	CI-3 BOARD
	274	3-670-058-00	SPRING, LEAF
	275	3-670-150-21	PLATE, BLIND
	276	▲:A-6728-247-A	RL-4 BOARD, COMPLETE
	277	▲:3-670-170-00	TUBE, RUBBER
	278	▲:3-670-032-00	RAIL (R)
	279	▲:3-670-012-00	OPEN LID
	280	3-573-469-00	RETAINER, LEAD, SD
	281	X-3670-083-0	DOOR ASSY, CASSETTE

Remark	Part No.
	3-669-3
	A-6761-1
	3-669-3
	3-669-5
	3-669-4
	3-669-3
	3-669-3
	3-669-4
	X-3670-1