

## SECTION 5 EXPLODED VIEWS

**NOTE :**

- -XX, -X mean standardized parts, so they may have some difference from the original one.
- The construction parts of an assembled part are indicated with a collation number in the remark column.
- Color indication of Appearance Parts  
Example :  
KNOB, BALANCE (WHITE)....(RED)

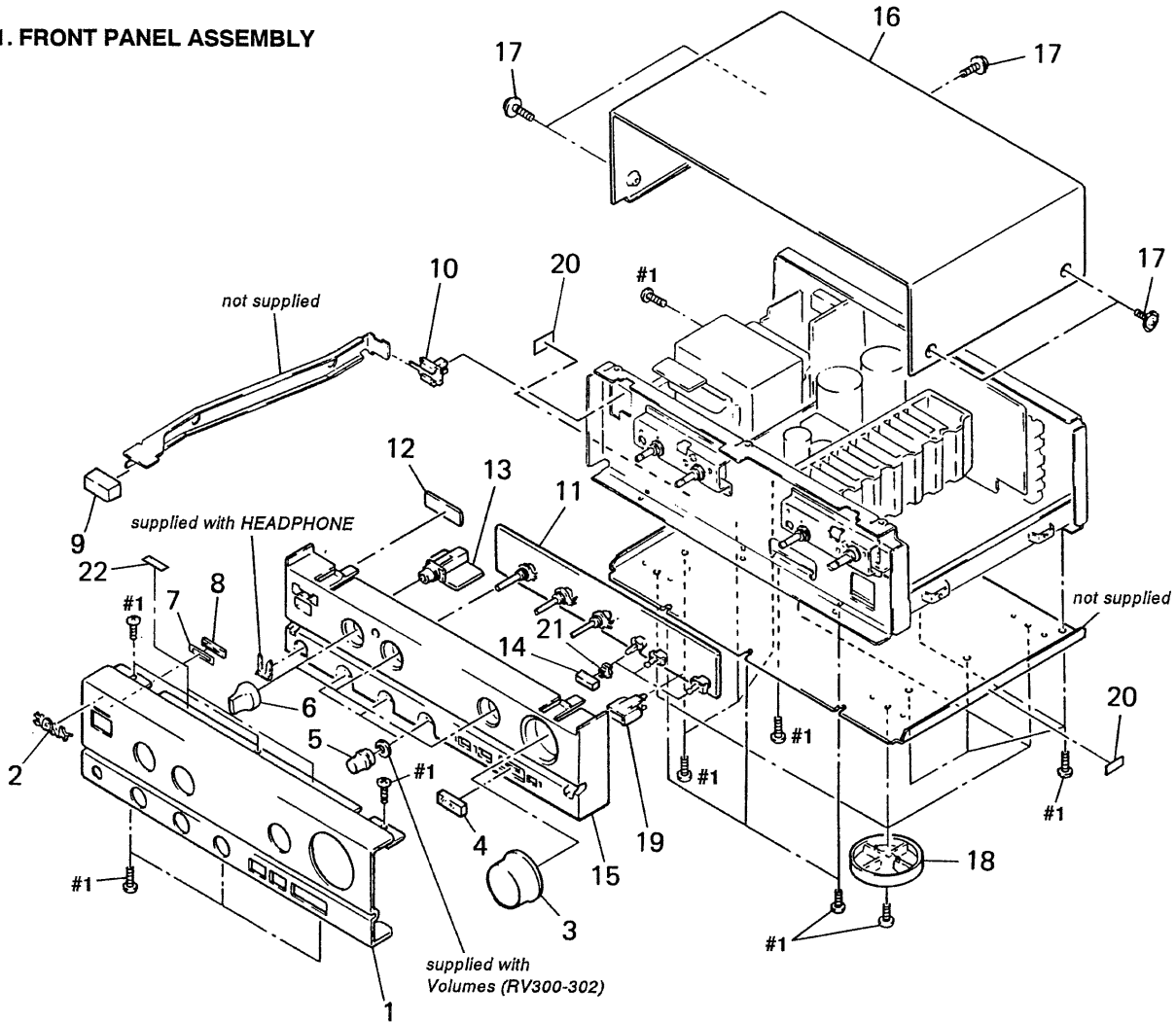
↑                    ↑  
Parts color      Cabinet's color

- Items marked " \* " are not stocked since they are seldom required for routine service. Some delay should be anticipated when ordering these items.
- The mechanical parts with no reference number in the exploded views are not supplied.
- Hardware ( # mark) list is given in the last of this parts list.

The components identified by mark or dotted line with mark are critical for safety. Replace only with part number specified.

- AE2 : Model for Scandinavian countries, Spain and Portugal.
- AE1 : Model for other European countries.

### 5-1. FRONT PANEL ASSEMBLY



Ref.No.	Part No.	Description	Remark	Ref.No.	Part No.	Description	Remark
1	4-957-473-01	PANEL, FRONT		* 12	1-639-971-11	LED BOARD	
2	4-942-568-01	EMBLEM (NO.5), SONY		* 13	1-639-969-11	HP BOARD	
3	X-4941-616-1	KNOB (R53) ASSY		14	4-947-011-01	BUTTON (F)	
4	4-945-622-01	PLATE (S/D), INDICATION		* 15	4-957-474-01	BASE, PANEL	
5	4-949-932-01	KNOB (DIA. 25)		* 16	4-924-920-71	CASE	
6	4-949-931-01	KNOB (DIA. 21)		17	3-704-366-01	SCREW (CASE) (M3X8)	
7	4-945-175-01	INDICATOR (PSW)		18	4-956-885-11	FOOT (F58175S2W)	
8	X-4942-660-1	INDICATOR ASSY		19	4-945-177-01	HOUSE, LIGHTING	
9	4-949-281-01	BUTTON		20	4-952-154-01	CUSHION (PE)	
10	4-875-466-11	JOINT (F2), KNOB		21	4-864-307-00	RING	
* 11	A-4345-196-A	SD BOARD, COMPLETE		22	9-911-830-XX	SHEET, HB	