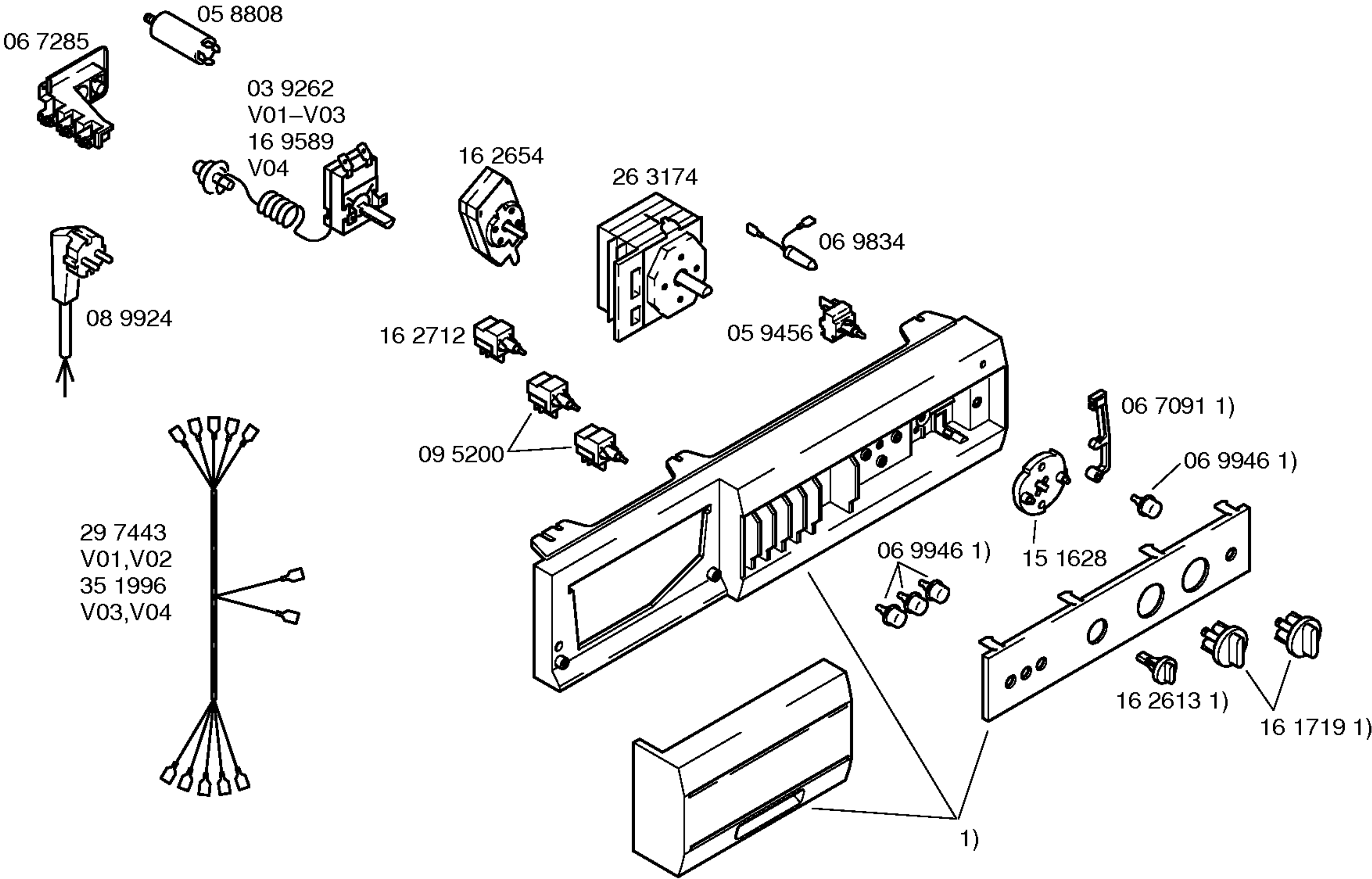
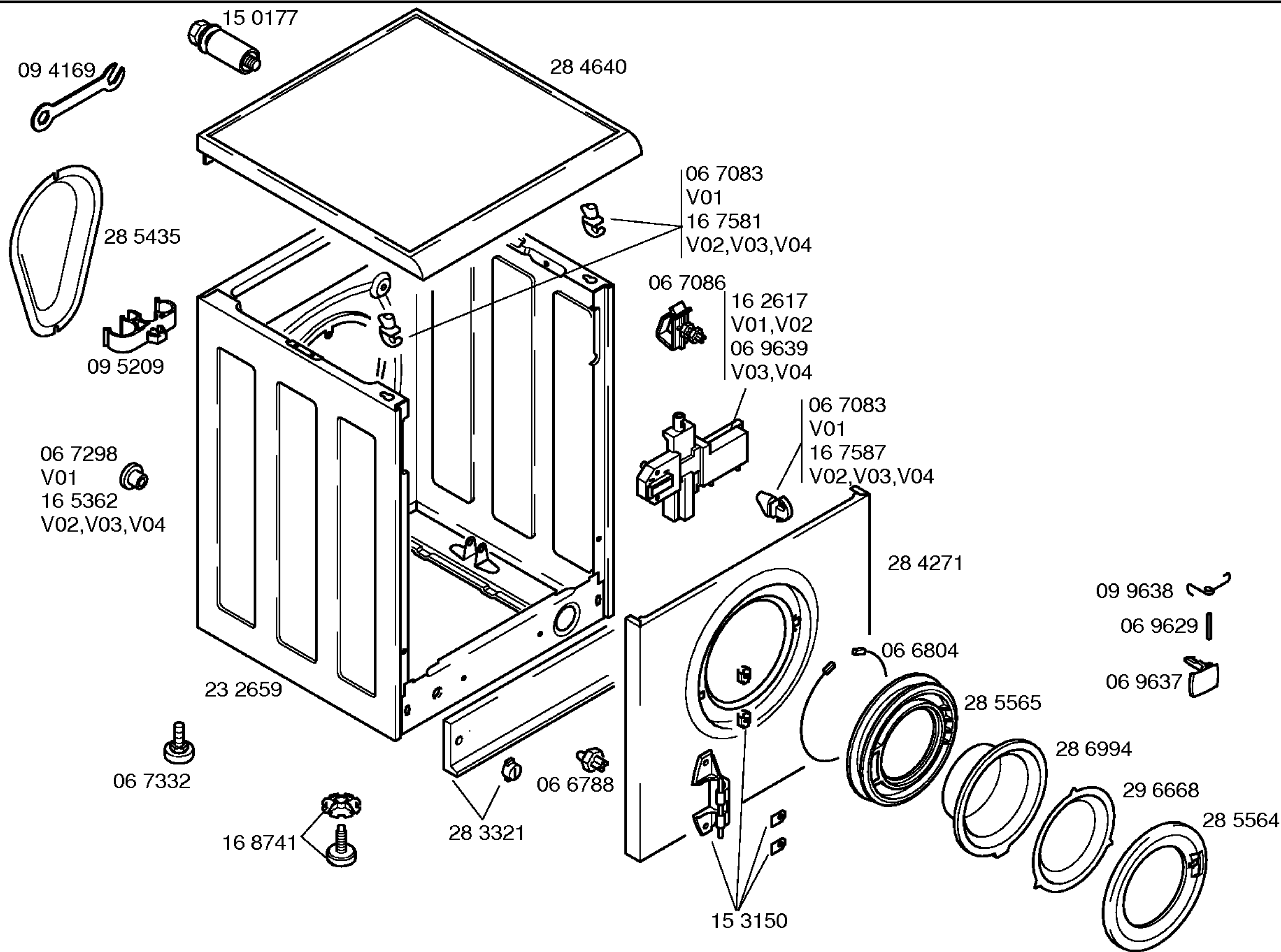
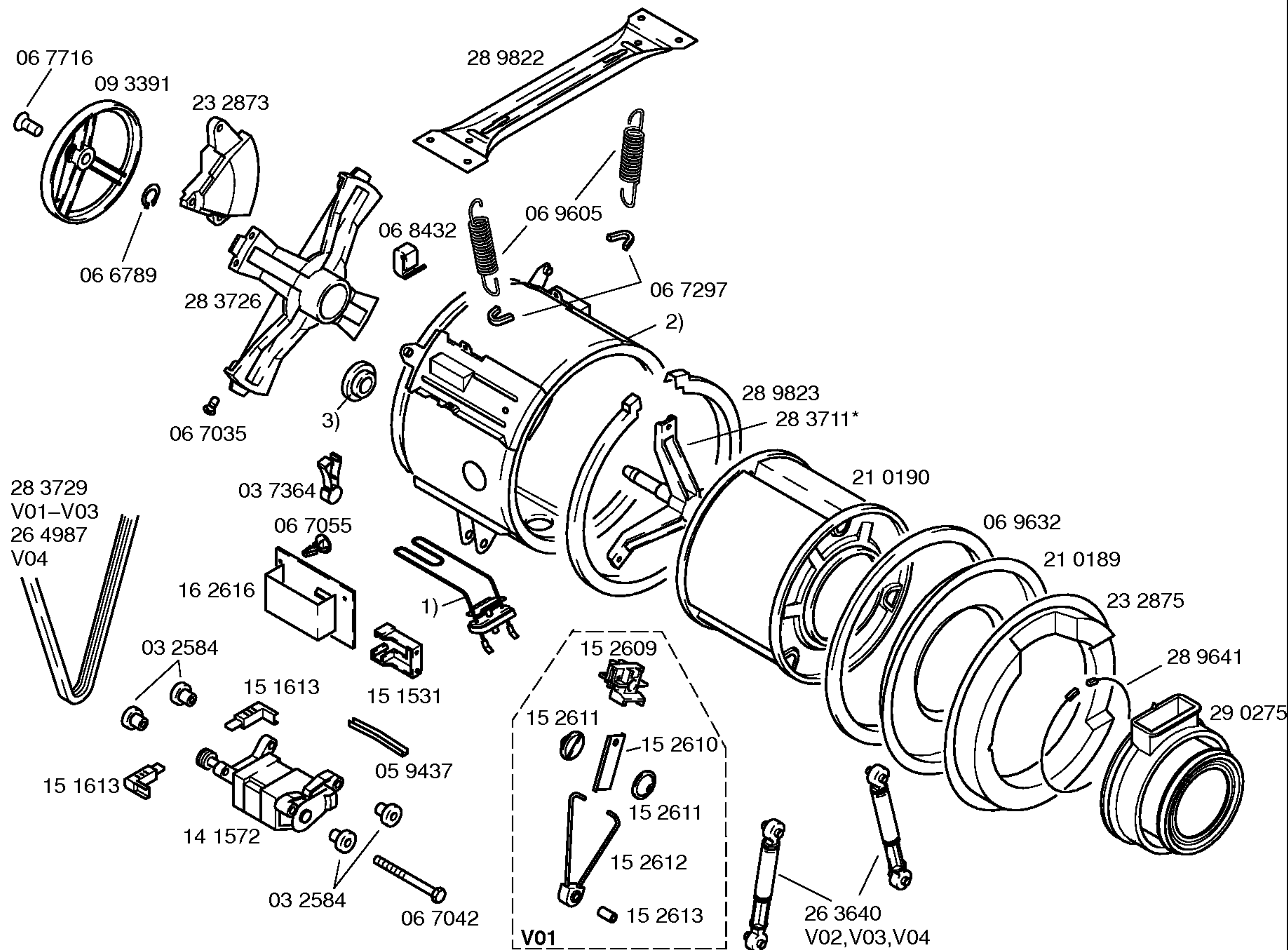


Libro de instrucciones  
51 9840  
(E,P)

1) 29 7442





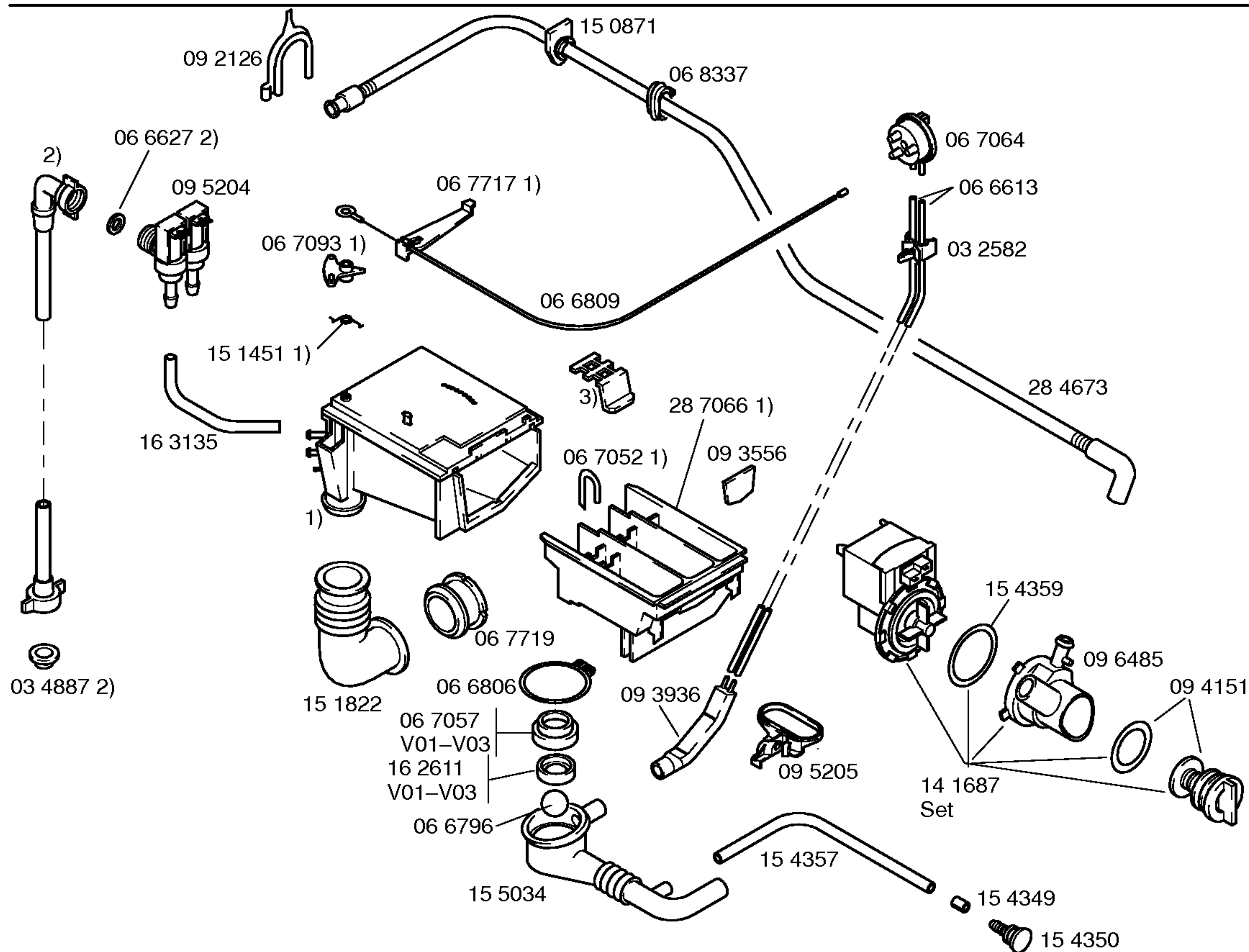


\* Conjunto tornillería  
05 9132

1) 09 6527  
V01,V02,V03  
26 4986  
V04

2) 23 2874  
V01,V02,V03  
21 4338  
V04

3) 03 9132  
V01,V02,V03  
03 6071  
V04



- 1) 28 7065  
Completa
- 2) 46 0484
- 3) 09 3555 1)



